

HALLIBURTON

iCem[®] Service

SRC ENERGY CORPORATION

United States of America, COLORADO

BOOMERANG 32N-6B-M

Sincerely,

Meghan Jacobs

Legal Notice

Disclaimer:

All information in this report is provided subject to the terms and conditions which govern the services provided by Halliburton. Halliburton personnel use their best efforts in gathering information and their best judgment in interpreting it, but any interpretation, research, analysis or recommendation furnished by Halliburton are opinions based upon inferences from measurements and empirical relationships and assumptions, which inferences and empirical relationships and assumptions are not infallible, and with respect to which professionals in the industry may differ. iCem 3D Displacement results are used to understand how fluids intermix during a cement job. Simulation and 3D displacement results are not intended as and should not be used as a replacement for bond logs in determining top of cement. Current 3D model calculations are known to model more volume than the input volume for standard cases due to known calculation improvements required. For rotational cases, the modeled volume will be impacted by the same calculations impacting the standard cases, as well as additional constraints imposed to make the calculation time required operationally feasible. Therefore, until further notice, 3D displacement results should not be used for replacement of a bond log, or used as an identifier of top of cement. HALLIBURTON IS UNABLE TO GUARANTEE THE ACCURACY OF ANY CHART INTERPRETATION, RESEARCH ANALYSIS, OR JOB RECOMMENDATION and any interpretation or recommendation is not for use of or reliance upon by any third party. The customer has full responsibility for any of its decisions which are based on the information provided in this report.

Table of Contents

1.0 Cementing Job Summary 4

 1.1 Executive Summary4

2.0 Real-Time Job Summary 7

 2.1 Job Event Log7

3.0 Attachments..... 9

 3.1 Boomerang 32N-6B-M Production – Job Chart with Events9

 3.2 Boomerang 32N-6B-M Production – Job Chart without Events10

1.0 Cementing Job Summary

1.1 Executive Summary

Halliburton appreciates the opportunity to perform the cementing services on the **Boomerang 32N-6B-M** cement **Production** casing job. A pre-job safety meeting was held before the job where details of the job were discussed, potential safety hazards were reviewed, and environmental compliance procedures were outlined.

Approximately 17bbls of cement returned to surface.

Halliburton maintains a continuous quality improvement process and appreciates any comments or suggestions that you may have. Halliburton again thanks you for the opportunity to perform service work on this well. We hope to be your solutions provider for future projects.

Respectfully,

Halliburton [Ft. Lupton]

HALLIBURTON

Cementing Job Summary

The Road to Excellence Starts with Safety

Sold To #: 359915	Ship To #: 3823558	Quote #:	Sales Order #: 0904727960							
Customer: SRC ENERGY INC-EBUS		Customer Rep: LOVEL YOUNG								
Well Name: BOOMERANG	Well #: 32N-6B-M	API/UWI #: 05-123-45396-00								
Field: WATTENBERG	City (SAP): GREELEY	County/Parish: WELD	State: COLORADO							
Legal Description: NE NW-5-5N-66W-1347FNL-2327FWL										
Contractor: Precision		Rig/Platform Name/Num: Precision 462								
Job BOM: 7523 7523										
Well Type: HORIZONTAL OIL										
Sales Person: HALAMERICA\HB41307		Srv Supervisor: Vitali Neverdasov								
Job										
Formation Name										
Formation Depth (MD)	Top	Bottom								
Form Type	BHST									
Job depth MD	15732ft	Job Depth TVD	7150							
Water Depth		Wk Ht Above Floor								
Perforation Depth (MD)	From	To								
Well Data										
Description	New / Used	Size in	ID in	Weight lbm/ft	Thread	Grade	Top MD ft	Bottom MD ft	Top TVD ft	Bottom TVD ft
Casing		9.625	8.921	36	LTC	J-55	0	1824	0	1824
Casing	0	5.5	4.778	20	BTC	P-110	0	15732	0	7150
Open Hole Section			8.5				1824	15747	1824	7150
Tools and Accessories										
Type	Size in	Qty	Make	Depth ft		Type	Size in	Qty	Make	
Guide Shoe	5.5					Top Plug	5.5	1	WHED	
Float Shoe	5.5	1	N/A	15732		Bottom Plug	5.5	1	WHED	
Float Collar	5.5	1	N/A	15683		SSR plug set	5.5			
Insert Float	5.5					Plug Container	5.5	1	HES	
Stage Tool	5.5					Centralizers	5.5			
Fluid Data										
Stage/Plug #: 1										
Fluid #	Stage Type	Fluid Name	Qty	Qty UoM	Mixing Density lbm/gal	Yield ft ³ /sack	Mix Fluid Gal	Rate bbl/min	Total Mix Fluid Gal	
1	Tuned Spacer III	Tuned Spacer III	40	bbl	11.5	3.8		4		
147.42 lbm/bbl		BARITE, BULK (100003681)								
35.10 gal/bbl		FRESH WATER								
0.50 gal/bbl		MUSOL A, 330 GAL TOTE - (790828)								
0.50 gal/bbl		DUAL SPACER SURFACTANT B, 5 GAL PAIL (100003665)								

HALLIBURTON

Cementing Job Summary

Fluid #	Stage Type	Fluid Name	Qty	Qty UoM	Mixing Density lbm/gal	Yield ft3/sack	Mix Fluid Gal	Rate bbl/min	Total Mix Fluid Gal
2	ElastiCem LEAD	ELASTICEM (TM) SYSTEM	998	sack	13.2	1.57		6	7.54
0.15 %		FE-2 (100001615)							
0.30 %		SCR-100 (100003749)							
7.54 Gal		FRESH WATER							
Fluid #	Stage Type	Fluid Name	Qty	Qty UoM	Mixing Density lbm/gal	Yield ft3/sack	Mix Fluid Gal	Rate bbl/min	Total Mix Fluid Gal
3	NeoCem	NeoCem TM	1081	sack	13.2	2.04		8	9.77
9.77 Gal		FRESH WATER							
0.08 %		SCR-100 (100003749)							
Fluid #	Stage Type	Fluid Name	Qty	Qty UoM	Mixing Density lbm/gal	Yield ft3/sack	Mix Fluid Gal	Rate bbl/min	Total Mix Fluid Gal
4	MMCR Displacement	MMCR Displacement	70	bbl	8.34			8	
0.2850 gal/bbl		MICRO MATRIX CEMENT RETARDER, 5 GAL PAIL (100003781)							
Fluid #	Stage Type	Fluid Name	Qty	Qty UoM	Mixing Density lbm/gal	Yield ft3/sack	Mix Fluid Gal	Rate bbl/min	Total Mix Fluid Gal
5	Water	Water	277	bbl	8.33			8	
0.0655 gal/bbl		CLA-WEB - BULK (101985043)							
Cement Left In Pipe		Amount	0 ft			Reason		WET SHOE	
Comment : ESTIMATED TOT @ 6105'. 17 BBLs OF CEMENT BACK TO SURFACE.									

2.0 Real-Time Job Summary

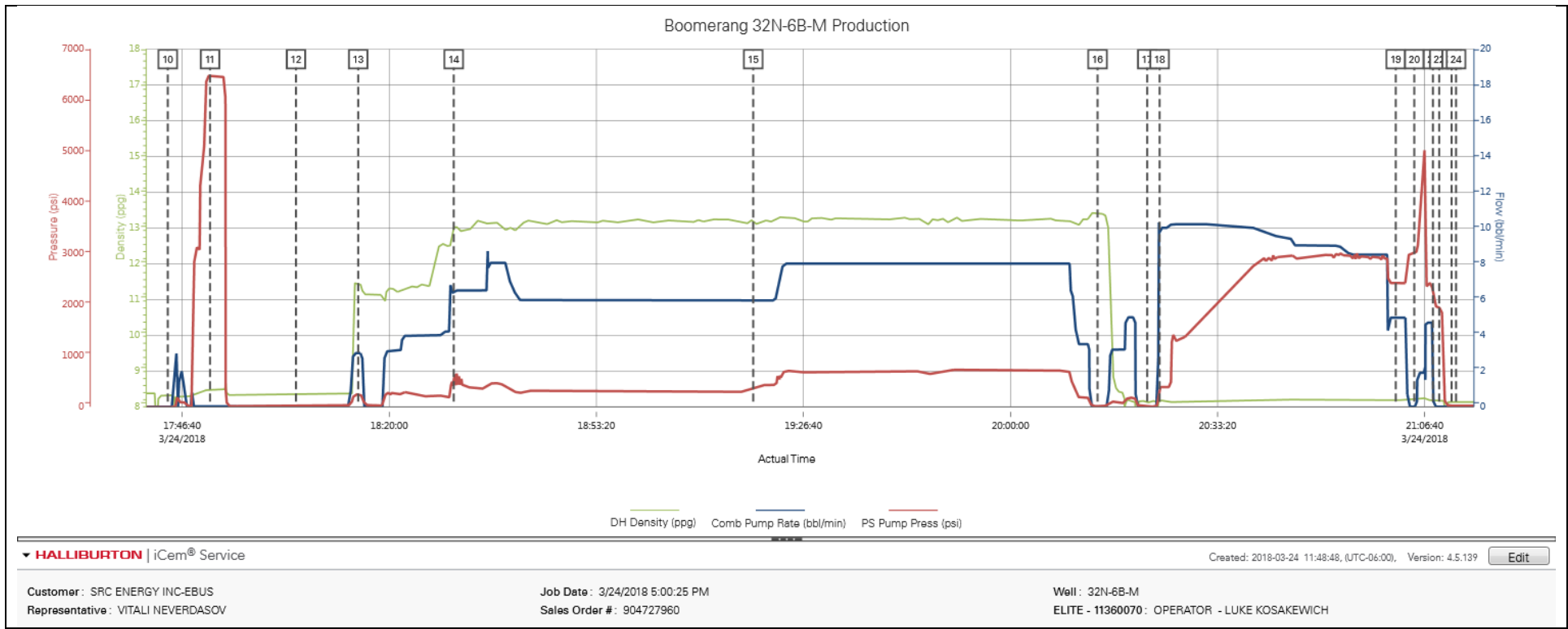
2.1 Job Event Log

Type	Seq. No.	Activity	Graph Label	Date	Time	Source	DH Density (ppg)	Comb Pump Rate (bbl/min)	PS Pump Press (psi)	Comments
Event	1	Call Out	Call Out	3/24/2018	08:30:00	USER				ON LOCATION @ 14:30
Event	2	Depart Yard Safety Meeting	Depart Yard Safety Meeting	3/24/2018	13:20:00	USER				CREW DISCUSSED HAZARDS ALONG ROUTE OF TRAVEL. BEGAIN JOURNEY MANAGEMENT
Event	3	Depart Shop for Location	Depart Shop for Location	3/24/2018	13:35:00	USER				
Event	4	Arrive at Location from Service Center	Arrive at Location from Service Center	3/24/2018	14:20:00	USER				30 MILES. DISCUSS NUMBERS AND JOB PROCEDURE WITH CUSTOMER. RIG IS RUNNING CASING
Event	5	Other	Other	3/24/2018	14:28:00	USER				SPOT TRUCK
Event	6	Safety Meeting - Pre Rig-Up	Safety Meeting - Pre Rig-Up	3/24/2018	14:35:00	USER				HELD PRE RIG UP JSA
Event	7	Rig-up Lines	Rig-up Lines	3/24/2018	14:40:00	USER				RIG UP ALL SURFACE LINES TO THE BUFFER ZONE
Event	8	Casing on Bottom	Casing on Bottom	3/24/2018	15:37:00	USER				CASING LANDED
Event	9	Other	Other	3/24/2018	16:00:00	USER				RIG UP FLOOR FOR RIG TO CIRCULATE
Event	10	Start Job	Start Job	3/24/2018	17:44:21	COM4	8.32	0.00	-10.00	
Event	11	Test Lines	Test Lines	3/24/2018	17:51:09	COM4	8.48	0.00	6461.00	LOAD AND TEST LINE TO 6520 PSI
Event	12	Safety Meeting - Pre Job	Safety Meeting - Pre Job	3/24/2018	18:05:00	USER	8.37	0.00	24.00	PER CUSTOMER REQUEST TEST LINES BEFORE SAFETY MEETING BECAUSE OF RIG CREW CHANGE. SAFETY MEETING WITH NIGHT CREW.
Event	13	Pump Spacer	Pump Spacer	3/24/2018	18:15:00	USER	11.42	3.00	253.00	DROP BOTTOM PLUG/ BATCH/ WEIGH/PUMP 40 BBLS OF TUNED SPACER WITH SURFACTANS @ 11.5 PPG
Event	14	Pump Lead Cement	Pump Lead Cement	3/24/2018	18:30:23	USER	13.03	6.50	431.00	WEIGH/ PUMP 998 SKS (279.1 BBLS) OF ELASTICEM @ 13.2 PPG
Event	15	Pump Tail Cement	Pump Tail Cement	3/24/2018	19:18:35	USER	13.18	6.00	351.00	WEIGHT/ PUMP 1081 SKS (392.8 BBLS) OF NEOCEM @ 13.2 PPG

Event	16	Shutdown	Shutdown	3/24/2018	20:14:00	USER	13.41	0.00	7.00	SHUT DOWN/ WASH PUMPS AND LINES
Event	17	Drop Top Plug	Drop Top Plug	3/24/2018	20:22:00	USER	8.13	0.00	3.00	
Event	18	Pump Displacement	Pump Displacement	3/24/2018	20:24:00	USER	8.22	10.10	371.00	PUMP FRESH WATER DISPLACEMENT WITH CLA-WEB AND BIOCID. FIRST 70 BBLS WITH MMCR.
Event	19	Slow Rate	Slow Rate	3/24/2018	21:02:00	USER	8.19	5.00	2426.00	SLOW RATE TO 5 BPM
Event	20	Bump Plug	Bump Plug	3/24/2018	21:05:00	USER	8.20	0.00	3014.00	BUMP PLUG WITH 500 PSI OVER FINAL CIRCULATING PRESSURE. TOTAL DISPLACEMENT 347.8 BBLS. 17 BBLS OF CEMENT BACK TO SURFACE.
Event	21	Other	Other	3/24/2018	21:08:00	USER	8.19	4.70	2360.00	PRESSURE UP TO SHIFT WET SHOE SUB AND PUMP 6 BBLS WET SHOE. SUB WENT @ 5100 PSI.
Event	22	Shutdown	Shutdown	3/24/2018	21:09:00	USER	8.17	0.00	1937.00	
Event	23	Check Floats	Check Floats	3/24/2018	21:11:00	USER	8.14	0.00	19.00	FLOATS HELD
Event	24	End Job	End Job	3/24/2018	21:11:43	COM4	8.14	0.00	19.00	
Event	25	Safety Meeting - Pre Rig-Down	Safety Meeting - Pre Rig-Down	3/24/2018	21:25:00	USER	8.08	10.80	341.00	RIG DOWN SAFETY MEETING

3.0 Attachments

3.1 Boomerang 32N-6B-M Production – Job Chart with Events



3.2 Boomerang 32N-6B-M Production – Job Chart without Events

