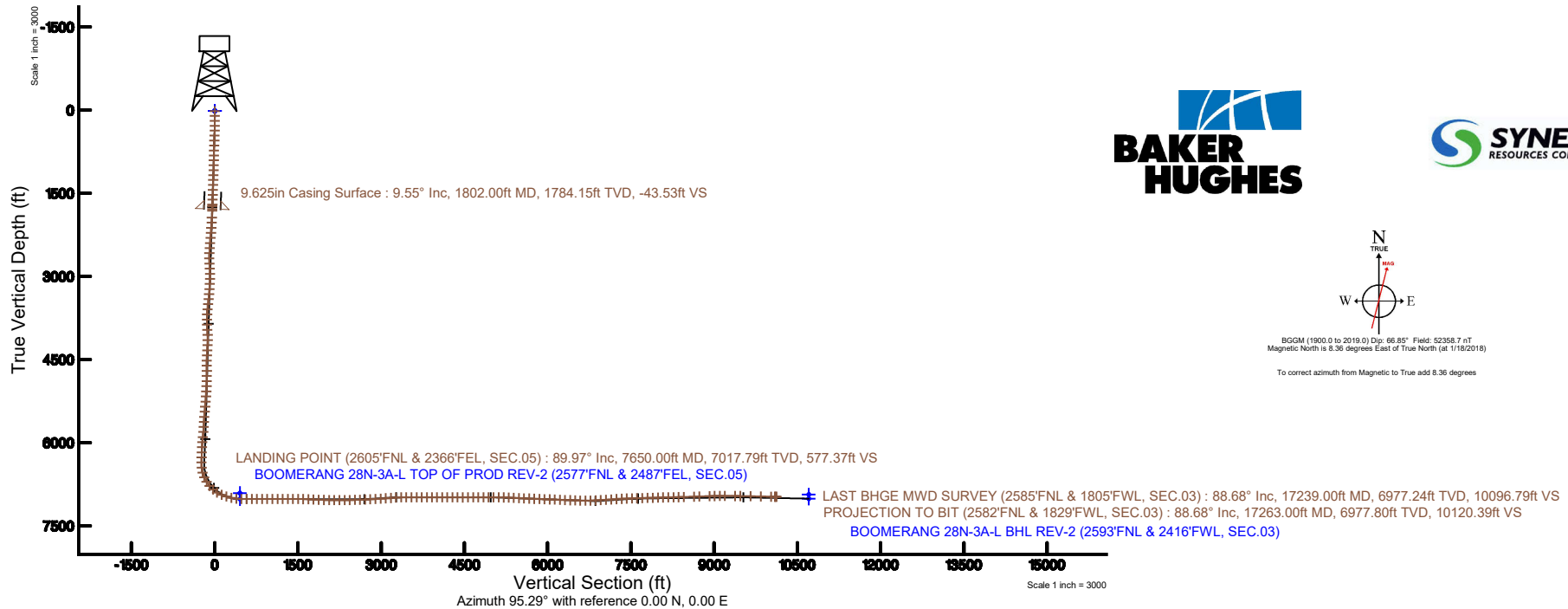
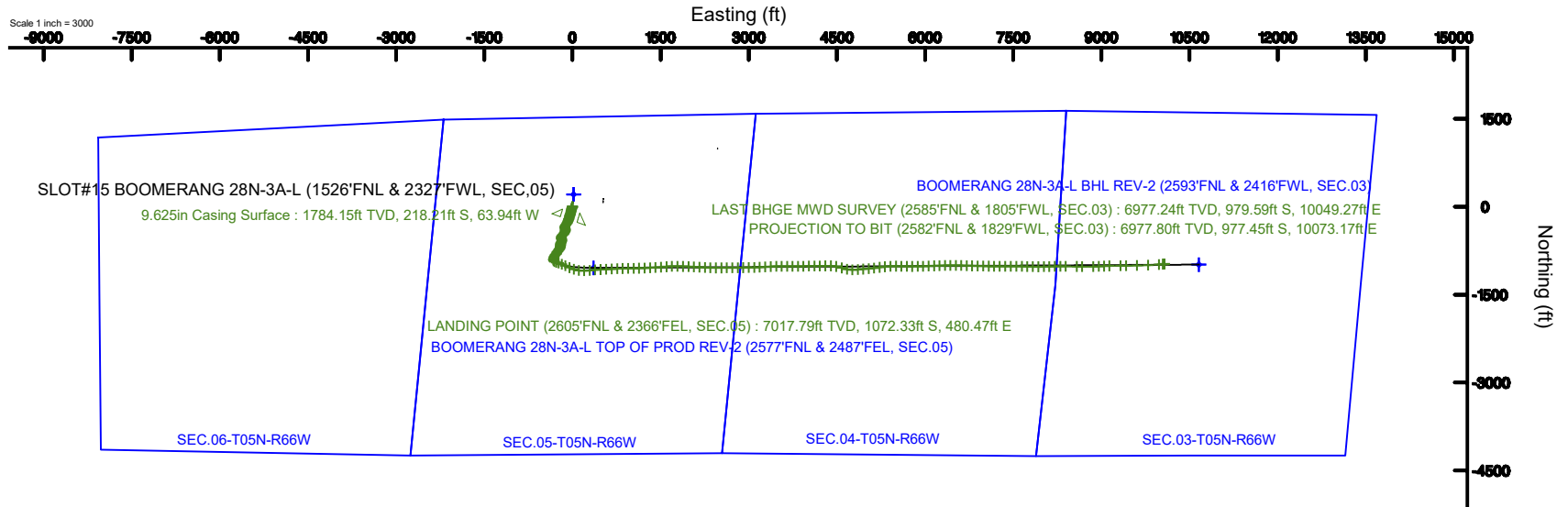


SRC ENERGY

Location: COLORADO Slot: SLOT#15 BOOMERANG 28N-3A-L (1526°FNL & 2327°FWL, SEC.05)
Field: WELD COUNTY (NAD83, TRUE NORTH) Well: BOOMERANG 28N-3A-L
Facility: SEC.05-T05N-R66W Wellbore: BOOMERANG 28N-3A-L PWB

Plot reference wellpath is BOOMERANG 28N-3A-L PWB (REV.B.0)	Grid System: NAD83 / Lambert Colorado SP, Northern Zone (501), US feet
True vertical depths are referenced to PRECISION 462 (20') (RKB)	* = Wellpath was transformed from a different geodetic datum
Measured depths are referenced to PRECISION 462 (20') (RKB)	North Reference: True north
PRECISION 462 (20') (RKB) to Mean Sea Level: 4789 feet	Scale: True distance
Mean Sea Level to Mud line (At Slot: SLOT#15 BOOMERANG 28N-3A-L (1526°FNL & 2327°FWL, SEC.05)): 0 feet	Depths are in feet
Coordinates are in feet referenced to Slot	Created by: doddanna on 2018-04-11
	Database: Denver DB



Actual Wellpath Report

BOOMERANG 28N-3A-L AWP

Page 1 of 7



REFERENCE WELLPATH IDENTIFICATION

Operator	SRC ENERGY	Slot	SLOT#15 BOOMERANG 28N-3A-L (1526'FNL & 2327'FWL, SEC,05)
Area	COLORADO	Well	BOOMERANG 28N-3A-L
Field	WELD COUNTY (NAD83,TRUE NORTH)	Wellbore	BOOMERANG 28N-3A-L AWB
Facility	SEC.05-T05N-R66W		

REPORT SETUP INFORMATION

Projection System	NAD83 / Lambert Colorado SP, Northern Zone (501), US feet	Software System	WellArchitect® 5.0
North Reference	True	User	Doddanna
Scale	0.999962	Report Generated	4/11/2018 at 4:19:54 PM
Convergence at slot	0.45° East	Database/Source file	Denver DB/BOOMERANG_28N-3A-L_AWP.xml

WELLPATH LOCATION

	Local coordinates		Grid coordinates		Geographic coordinates	
	North[ft]	East[ft]	Easting[US ft]	Northing[US ft]	Latitude	Longitude
Slot Location	-209.18	-20.65	3193857.47	1401329.59	40°25'58.663"N	104°48'12.971"W
Facility Reference Pt			3193876.47	1401538.91	40°26'00.730"N	104°48'12.704"W
Field Reference Pt			3171284.48	1426358.81	40°30'07.643"N	104°53'02.634"W

WELLPATH DATUM

Calculation method	Minimum curvature	PRECISION 462 (20') (RKB) to Facility Vertical Datum	4789.00ft
Horizontal Reference Pt	Slot	PRECISION 462 (20') (RKB) to Mean Sea Level	4789.00ft
Vertical Reference Pt	PRECISION 462 (20') (RKB)	PRECISION 462 (20') (RKB) to Mud Line at Slot (SLOT#15 BOOMERANG 28N-3A-L (1526'FNL & 2327'FWL, SEC,05))	4789.00ft
MD Reference Pt	PRECISION 462 (20') (RKB)	Section Origin	N 0.00, E 0.00 ft
Field Vertical Reference	Mean Sea Level	Section Azimuth	95.29°

Actual Wellpath Report

BOOMERANG 28N-3A-L AWP

Page 2 of 7



REFERENCE WELLPATH IDENTIFICATION

Operator	SRC ENERGY	Slot	SLOT#15 BOOMERANG 28N-3A-L (1526'FNL & 2327'FWL, SEC,05)
Area	COLORADO	Well	BOOMERANG 28N-3A-L
Field	WELD COUNTY (NAD83,TRUE NORTH)	Wellbore	BOOMERANG 28N-3A-L AWB
Facility	SEC.05-T05N-R66W		

WELLPATH DATA (183 stations) † = interpolated/extrapolated station

MD [ft]	Inclination [°]	Azimuth [°]	TVD [ft]	Vert Sect [ft]	North [ft]	East [ft]	DLS [°/100ft]	Comments
0.00†	0.000	96.010	0.00	0.00	0.00	0.00	0.00	
20.00	0.000	96.010	20.00	0.00	0.00	0.00	0.00	
102.00	0.750	96.010	102.00	0.54	-0.06	0.53	0.91	
192.00	0.690	116.790	191.99	1.63	-0.36	1.60	0.30	
285.00	1.540	202.320	284.98	1.78	-1.77	1.63	1.76	
371.00	3.800	207.250	370.88	0.38	-5.37	-0.12	2.64	
461.00	6.370	203.730	460.52	-2.31	-12.60	-3.49	2.88	
551.00	8.630	203.840	549.74	-6.04	-23.35	-8.23	2.51	
641.00	9.210	199.150	638.65	-9.91	-36.33	-13.32	1.03	
731.00	8.690	192.530	727.56	-12.49	-49.77	-17.16	1.28	
821.00	8.780	189.290	816.52	-13.83	-63.18	-19.74	0.56	
911.00	9.490	193.370	905.37	-15.35	-77.18	-22.57	1.07	
1001.00	9.120	193.530	994.19	-17.41	-91.33	-25.95	0.41	
1091.00	9.430	195.120	1083.01	-19.69	-105.39	-29.54	0.45	
1181.00	9.700	197.390	1171.76	-22.54	-119.74	-33.73	0.52	
1271.00	9.390	198.590	1260.52	-25.82	-133.93	-38.34	0.41	
1361.00	9.560	197.910	1349.29	-29.14	-148.00	-42.98	0.23	
1451.00	9.260	195.390	1438.08	-32.04	-162.10	-47.20	0.57	
1541.00	9.170	196.040	1526.92	-34.65	-175.97	-51.10	0.15	
1631.00	9.810	195.970	1615.68	-37.40	-190.23	-55.19	0.71	
1721.00	10.040	197.620	1704.34	-40.50	-205.08	-59.68	0.41	
1751.00	9.890	197.360	1733.89	-41.59	-210.03	-61.24	0.52	
1834.00	9.350	200.570	1815.72	-44.86	-223.15	-65.73	0.92	
1959.00	9.650	200.830	1939.00	-50.34	-242.45	-73.03	0.24	
2052.00	9.530	204.100	2030.70	-54.91	-256.76	-78.94	0.60	
2145.00	9.580	205.060	2122.41	-60.01	-270.80	-85.36	0.18	
2237.00	9.460	211.400	2213.15	-65.93	-284.19	-92.55	1.15	
2331.00	9.560	219.570	2305.86	-73.72	-296.80	-101.54	1.44	
2424.00	9.540	213.470	2397.58	-81.71	-309.18	-110.71	1.09	
2517.00	9.780	211.560	2489.26	-88.84	-322.34	-119.10	0.43	
2611.00	9.790	205.000	2581.89	-95.07	-336.39	-126.65	1.19	
2705.00	9.990	177.510	2674.55	-96.66	-351.78	-129.68	4.98	
2800.00	9.590	157.520	2768.19	-91.86	-367.33	-126.29	3.58	
2893.00	9.630	171.260	2859.90	-86.36	-382.18	-122.15	2.46	
2987.00	9.650	181.530	2952.58	-83.94	-397.83	-121.17	1.83	
3079.00	9.580	189.020	3043.29	-83.93	-413.10	-122.57	1.36	
3173.00	10.100	202.630	3135.92	-86.89	-428.43	-126.97	2.53	
3266.00	10.110	207.910	3227.48	-92.46	-443.17	-133.93	1.00	
3359.00	10.140	217.430	3319.04	-99.95	-456.89	-142.73	1.80	
3452.00	10.120	221.860	3410.59	-109.18	-469.48	-153.15	0.84	
3545.00	10.140	223.720	3502.14	-119.13	-481.48	-164.26	0.35	
3638.00	10.060	217.940	3593.70	-128.60	-493.80	-174.92	1.09	
3732.00	10.150	206.660	3686.25	-136.05	-507.68	-183.68	2.10	
3825.00	10.280	188.870	3777.80	-139.55	-523.20	-188.64	3.38	
3919.00	10.280	168.170	3870.32	-137.60	-539.71	-188.21	3.91	

Actual Wellpath Report

BOOMERANG 28N-3A-L AWP

Page 3 of 7



REFERENCE WELLPATH IDENTIFICATION			
Operator	SRC ENERGY	Slot	SLOT#15 BOOMERANG 28N-3A-L (1526'FNL & 2327'FWL, SEC,05)
Area	COLORADO	Well	BOOMERANG 28N-3A-L
Field	WELD COUNTY (NAD83,TRUE NORTH)	Wellbore	BOOMERANG 28N-3A-L AWB
Facility	SEC.05-T05N-R66W		

WELLPATH DATA (183 stations)

MD [ft]	Inclination [°]	Azimuth [°]	TVD [ft]	Vert Sect [ft]	North [ft]	East [ft]	DLS [°/100ft]	Comments
4014.00	8.500	154.250	3964.06	-131.49	-554.33	-183.42	3.02	
4108.00	8.580	169.600	4057.03	-126.01	-567.49	-179.14	2.42	
4201.00	8.740	192.660	4148.99	-125.03	-581.21	-179.44	3.71	
4295.00	8.660	207.150	4241.92	-128.59	-594.47	-184.23	2.33	
4388.00	8.900	209.520	4333.84	-134.14	-606.96	-190.97	0.47	
4481.00	8.750	201.520	4425.74	-139.07	-619.81	-197.11	1.33	
4575.00	8.710	191.080	4518.65	-141.79	-633.44	-201.10	1.68	
4668.00	8.590	179.710	4610.60	-141.82	-647.30	-202.42	1.84	
4762.00	8.650	184.050	4703.54	-140.98	-661.37	-202.88	0.69	
4856.00	8.540	188.930	4796.49	-141.27	-675.32	-204.47	0.78	
4950.00	8.570	194.940	4889.44	-142.89	-688.98	-207.35	0.95	
5043.00	8.670	200.080	4981.40	-145.84	-702.26	-211.55	0.84	
5136.00	8.650	207.090	5073.34	-150.22	-715.07	-217.14	1.13	
5230.00	8.630	212.730	5166.27	-156.10	-727.29	-224.17	0.90	
5323.00	8.680	215.780	5258.21	-162.87	-738.86	-232.05	0.50	
5416.00	8.770	221.880	5350.14	-170.66	-749.83	-240.88	1.00	
5508.00	8.620	223.850	5441.08	-179.14	-760.02	-250.34	0.36	
5602.00	8.660	214.730	5534.02	-187.01	-770.92	-259.25	1.46	
5694.00	8.670	204.470	5624.98	-192.69	-782.92	-266.07	1.68	
5787.00	8.580	201.620	5716.92	-196.94	-795.75	-271.53	0.47	
5879.00	8.650	216.730	5807.90	-202.48	-807.68	-278.20	2.45	
5972.00	11.000	222.720	5899.53	-211.52	-819.81	-288.40	2.75	
6066.00	11.450	214.370	5991.74	-221.50	-834.10	-299.75	1.79	
6159.00	11.370	201.860	6082.91	-228.60	-850.23	-308.38	2.66	
6253.00	11.450	192.250	6175.06	-232.38	-867.94	-313.81	2.02	
6346.00	11.380	195.260	6266.23	-235.08	-885.82	-318.18	0.64	
6439.00	11.010	192.280	6357.46	-237.75	-903.35	-322.49	0.74	
6533.00	12.720	161.390	6449.54	-234.64	-921.94	-321.09	6.91	
6625.00	17.040	119.900	6538.67	-218.23	-938.32	-306.13	12.17	
6717.00	23.760	105.200	6624.91	-187.66	-949.91	-276.50	9.13	
6810.00	32.150	107.760	6706.99	-144.97	-962.40	-234.78	9.11	
6904.00	41.320	111.920	6782.25	-90.69	-981.66	-182.05	10.10	
6996.00	50.600	114.560	6846.14	-27.89	-1007.83	-121.41	10.29	
7089.00	59.730	114.520	6899.21	44.11	-1039.50	-52.04	9.82	
7182.00	66.970	107.100	6940.94	124.11	-1068.82	25.59	10.55	
7275.00	72.940	97.900	6972.86	210.65	-1087.56	110.76	11.29	
7369.00	79.190	88.710	6995.54	301.67	-1092.72	201.69	11.58	
7461.00	83.030	83.620	7009.76	391.36	-1086.62	292.33	6.88	
7555.00	88.610	85.970	7016.61	483.50	-1078.12	385.66	6.44	
7650.00	89.970	87.030	7017.79	577.37	-1072.33	480.47	1.81	LANDING POINT (2605'FNL & 2366'FEL, SEC.05)
7744.00	89.970	86.940	7017.84	670.39	-1067.38	574.34	0.10	
7837.00	90.060	87.170	7017.81	762.43	-1062.60	667.21	0.27	
7931.00	90.030	87.580	7017.74	855.53	-1058.30	761.12	0.44	
8024.00	89.970	88.470	7017.74	947.78	-1055.09	854.06	0.96	
8118.00	90.000	89.300	7017.76	1041.19	-1053.26	948.04	0.88	

Actual Wellpath Report

BOOMERANG 28N-3A-L AWP

Page 4 of 7



REFERENCE WELLPATH IDENTIFICATION			
Operator	SRC ENERGY	Slot	SLOT#15 BOOMERANG 28N-3A-L (1526'FNL & 2327'FWL, SEC,05)
Area	COLORADO	Well	BOOMERANG 28N-3A-L
Field	WELD COUNTY (NAD83,TRUE NORTH)	Wellbore	BOOMERANG 28N-3A-L AWB
Facility	SEC.05-T05N-R66W		

WELLPATH DATA (183 stations)

MD [ft]	Inclination [°]	Azimuth [°]	TVD [ft]	Vert Sect [ft]	North [ft]	East [ft]	DLS [°/100ft]	Comments
8212.00	90.090	88.770	7017.69	1134.63	-1051.68	1042.03	0.57	
8304.00	89.940	87.960	7017.66	1225.96	-1049.06	1133.99	0.90	
8397.00	89.880	87.970	7017.81	1318.20	-1045.75	1226.93	0.07	
8491.00	89.940	87.950	7017.96	1411.43	-1042.41	1320.87	0.07	
8585.00	89.970	87.130	7018.03	1504.57	-1038.37	1414.78	0.87	
8678.00	89.910	85.570	7018.13	1596.43	-1032.45	1507.59	1.68	
8772.00	87.810	84.000	7020.00	1688.83	-1023.91	1601.18	2.79	
8865.00	85.780	87.130	7025.20	1780.33	-1016.73	1693.74	4.01	
8960.00	88.000	91.750	7030.36	1874.67	-1015.81	1788.56	5.39	
9054.00	87.870	91.990	7033.74	1968.44	-1018.87	1882.45	0.29	
9148.00	90.060	92.840	7035.44	2062.30	-1022.83	1976.34	2.50	
9240.00	89.940	93.030	7035.44	2154.22	-1027.54	2068.22	0.24	
9334.00	90.030	93.370	7035.47	2248.16	-1032.79	2162.08	0.37	
9427.00	89.940	93.210	7035.49	2341.10	-1038.13	2254.92	0.20	
9520.00	90.550	92.000	7035.09	2433.99	-1042.35	2347.82	1.46	
9612.00	91.970	90.520	7033.07	2525.74	-1044.38	2439.77	2.23	
9706.00	92.030	89.330	7029.79	2619.27	-1044.25	2533.71	1.27	
9799.00	91.880	89.060	7026.62	2711.69	-1042.95	2626.65	0.33	
9893.00	93.640	89.870	7022.09	2805.09	-1042.07	2720.53	2.06	
9986.00	93.510	89.350	7016.29	2897.45	-1041.44	2813.35	0.58	
10080.00	93.670	89.150	7010.40	2990.74	-1040.21	2907.16	0.27	
10173.00	93.640	88.500	7004.48	3082.96	-1038.31	2999.95	0.70	
10266.00	93.550	88.150	6998.64	3175.09	-1035.60	3092.73	0.39	
10361.00	93.580	87.690	6992.74	3269.13	-1032.15	3187.48	0.48	
10453.00	92.250	86.570	6988.06	3360.07	-1027.55	3279.24	1.89	
10548.00	90.060	86.450	6986.14	3453.93	-1021.77	3374.04	2.31	
10643.00	89.690	87.800	6986.35	3547.97	-1017.01	3468.92	1.47	
10735.00	89.910	90.240	6986.67	3639.41	-1015.43	3560.90	2.66	
10827.00	89.720	91.320	6986.97	3731.12	-1016.69	3652.89	1.19	
10920.00	89.880	90.560	6987.29	3823.85	-1018.21	3745.87	0.84	
11012.00	89.850	89.170	6987.51	3915.44	-1017.99	3837.87	1.51	
11104.00	89.750	88.350	6987.83	4006.84	-1016.00	3929.85	0.90	
11199.00	90.180	88.840	6987.89	4101.19	-1013.67	4024.82	0.69	
11291.00	89.940	89.280	6987.79	4192.64	-1012.17	4116.80	0.54	
11384.00	90.000	88.970	6987.84	4285.10	-1010.75	4209.79	0.34	
11477.00	89.720	90.430	6988.07	4377.66	-1010.26	4302.79	1.60	
11571.00	90.120	89.100	6988.20	4471.22	-1009.87	4396.79	1.48	
11665.00	90.430	102.630	6987.75	4564.99	-1019.46	4490.08	14.40	
11760.00	90.150	107.340	6987.27	4658.61	-1044.01	4581.82	4.97	
11852.00	90.090	100.810	6987.07	4749.48	-1066.37	4671.01	7.10	
11945.00	90.060	91.720	6986.95	4842.37	-1076.51	4763.36	9.77	
12038.00	90.150	84.680	6986.78	4934.60	-1073.59	4856.25	7.57	
12131.00	90.060	84.090	6986.61	5025.92	-1064.49	4948.80	0.64	
12224.00	90.030	86.510	6986.54	5117.50	-1056.87	5041.48	2.60	
12317.00	87.540	81.310	6988.51	5208.61	-1047.02	5133.90	6.20	

Actual Wellpath Report

BOOMERANG 28N-3A-L AWP

Page 5 of 7



REFERENCE WELLPATH IDENTIFICATION			
Operator	SRC ENERGY	Slot	SLOT#15 BOOMERANG 28N-3A-L (1526'FNL & 2327'FWL, SEC,05)
Area	COLORADO	Well	BOOMERANG 28N-3A-L
Field	WELD COUNTY (NAD83,TRUE NORTH)	Wellbore	BOOMERANG 28N-3A-L AWB
Facility	SEC.05-T05N-R66W		

WELLPATH DATA (183 stations)

MD [ft]	Inclination [°]	Azimuth [°]	TVD [ft]	Vert Sect [ft]	North [ft]	East [ft]	DLS [°/100ft]	Comments
12410.00	87.500	82.470	6992.54	5298.99	-1033.91	5225.88	1.25	
12503.00	87.470	85.140	6996.62	5390.03	-1023.88	5318.24	2.87	
12596.00	87.500	86.720	7000.70	5481.70	-1017.29	5410.91	1.70	
12690.00	87.440	89.730	7004.85	5574.89	-1014.38	5504.77	3.20	
12782.00	87.410	92.100	7008.98	5666.52	-1015.85	5596.66	2.57	
12875.00	87.440	91.350	7013.16	5759.24	-1018.64	5689.52	0.81	
12968.00	87.440	89.660	7017.31	5851.82	-1019.46	5782.42	1.82	
13060.00	87.970	88.580	7021.00	5943.21	-1018.05	5874.33	1.31	
13154.00	87.870	88.140	7024.41	6036.47	-1015.36	5968.23	0.48	
13248.00	87.910	88.060	7027.87	6129.66	-1012.25	6062.12	0.10	
13341.00	87.840	88.340	7031.32	6221.89	-1009.33	6155.01	0.31	
13434.00	87.970	88.070	7034.72	6314.11	-1006.42	6247.90	0.32	
13526.00	87.780	88.330	7038.13	6405.35	-1003.53	6339.79	0.35	
13618.00	88.000	89.760	7041.52	6496.73	-1002.00	6431.71	1.57	
13711.00	87.940	90.520	7044.81	6589.30	-1002.22	6524.65	0.82	
13803.00	90.030	91.460	7046.44	6681.02	-1003.81	6616.62	2.49	
13896.00	90.920	91.500	7045.67	6773.81	-1006.22	6709.58	0.96	
13988.00	93.510	91.820	7042.12	6865.55	-1008.88	6801.47	2.84	
14082.00	93.390	91.230	7036.46	6959.17	-1011.38	6895.26	0.64	
14176.00	93.390	91.170	7030.90	7052.77	-1013.34	6989.08	0.06	
14270.00	93.670	90.970	7025.11	7146.34	-1015.09	7082.88	0.37	
14364.00	93.540	90.400	7019.20	7239.85	-1016.21	7176.69	0.62	
14459.00	93.510	90.700	7013.36	7334.34	-1017.12	7271.51	0.32	
14553.00	91.790	90.370	7009.02	7427.91	-1018.00	7365.40	1.86	
14645.00	91.760	89.950	7006.17	7519.50	-1018.26	7457.35	0.46	
14739.00	91.880	89.980	7003.18	7613.05	-1018.20	7551.31	0.13	
14834.00	91.820	90.830	7000.11	7707.65	-1018.87	7646.25	0.90	
14928.00	90.740	91.690	6998.01	7801.39	-1020.94	7740.21	1.47	
15021.00	91.910	91.110	6995.86	7894.15	-1023.21	7833.15	1.40	
15116.00	92.090	90.670	6992.55	7988.81	-1024.68	7928.08	0.50	
15210.00	92.000	88.270	6989.19	8082.26	-1023.82	8022.01	2.55	
15303.00	90.800	87.990	6986.92	8174.50	-1020.78	8114.93	1.32	
15397.00	91.260	88.670	6985.23	8267.79	-1018.04	8208.88	0.87	
15490.00	91.260	90.240	6983.19	8360.29	-1017.16	8301.85	1.69	
15583.00	91.420	90.500	6981.01	8452.92	-1017.76	8394.82	0.33	
15770.00	92.000	90.960	6975.43	8639.24	-1020.14	8581.72	0.40	
15863.00	92.190	90.710	6972.03	8731.90	-1021.49	8674.65	0.34	
16050.00	92.160	89.170	6964.93	8917.94	-1021.30	8861.51	0.82	
16143.00	90.000	87.640	6963.18	9010.24	-1018.71	8954.45	2.85	
16235.00	90.150	86.350	6963.06	9101.28	-1013.89	9046.32	1.41	
16327.00	89.940	87.900	6962.99	9192.34	-1009.27	9138.20	1.70	
16514.00	89.910	90.790	6963.23	9378.32	-1007.14	9325.17	1.55	
16608.00	88.920	88.940	6964.19	9471.88	-1006.91	9419.16	2.23	
16796.00	88.800	88.820	6967.93	9658.67	-1003.24	9607.08	0.09	
16984.00	88.710	87.230	6972.02	9845.11	-996.76	9794.92	0.85	

Actual Wellpath Report

BOOMERANG 28N-3A-L AWP

Page 6 of 7



REFERENCE WELLPATH IDENTIFICATION			
Operator	SRC ENERGY	Slot	SLOT#15 BOOMERANG 28N-3A-L (1526'FNL & 2327'FWL, SEC.05)
Area	COLORADO	Well	BOOMERANG 28N-3A-L
Field	WELD COUNTY (NAD83,TRUE NORTH)	Wellbore	BOOMERANG 28N-3A-L AWB
Facility	SEC.05-T05N-R66W		

WELLPATH DATA (183 stations)								
MD [ft]	Inclination [°]	Azimuth [°]	TVD [ft]	Vert Sect [ft]	North [ft]	East [ft]	DLS [°/100ft]	Comments
17169.00	88.950	85.690	6975.80	10027.87	-985.34	9979.52	0.84	
17239.00	88.680	84.880	6977.24	10096.79	-979.59	10049.27	1.22	LAST BHGE MWD SURVEY (2585'FNL & 1805'FWL, SEC.03)
17263.00	88.680	84.880	6977.80	10120.39	-977.45	10073.17	0.00	PROJECTION TO BIT (2582'FNL & 1829'FWL, SEC.03)

HOLE & CASING SECTIONS									
- Ref Wellbore: BOOMERANG 28N-3A-L AWB					Ref Wellpath: BOOMERANG 28N-3A-L AWP				
String/Diameter	Start MD [ft]	End MD [ft]	Interval [ft]	Start TVD [ft]	End TVD [ft]	Start N/S [ft]	Start E/W [ft]	End N/S [ft]	End E/W [ft]
13.5in Open Hole	20.00	1802.00	1782.00	20.00	1784.15	0.00	0.00	-218.21	-63.94
9.625in Casing Surface	20.00	1802.00	1782.00	20.00	1784.15	0.00	0.00	-218.21	-63.94
8.5in Open Hole	1802.00	17263.00	15461.00	1784.15	6977.80	-218.21	-63.94	-977.45	10073.17

TARGETS								
Name	TVD [ft]	North [ft]	East [ft]	Grid East [US ft]	Grid North [US ft]	Latitude	Longitude	Shape
SEC.03-T05N-R66W	15.00	209.18	20.65	3193876.47	1401538.91	40°26'00.730"N	104°48'12.704"W	polygon
SEC.04-T05N-R66W	15.00	209.18	20.65	3193876.47	1401538.91	40°26'00.730"N	104°48'12.704"W	polygon
SEC.05-T05N-R66W	15.00	209.18	20.65	3193876.47	1401538.91	40°26'00.730"N	104°48'12.704"W	polygon
SEC.06-T05N-R66W	15.00	209.18	20.65	3193876.47	1401538.91	40°26'00.730"N	104°48'12.704"W	polygon
BOOMERANG 28N-3A-L (TOP OF PROD ON PLAT (2577'FNL & 2487'FEL, SEC.05)	6910.00	-1044.47	359.44	3194225.08	1400288.02	40°25'48.342"N	104°48'08.323"W	circle
BOOMERANG 28N-3A-L BHL ON PLAT (2593'FNL & 2416'FWL, SEC.03)	6937.00	-987.92	10659.83	3204524.30	1400425.45	40°25'48.878"N	104°45'55.127"W	circle
BOOMERANG 28N-3A-L BHL REV-2 (2593'FNL & 2416'FWL, SEC.03)	7010.45	-987.92	10659.83	3204524.30	1400425.45	40°25'48.878"N	104°45'55.127"W	circle
BOOMERANG 28N-3A-L TOP OF PROD REV-2 (2577'FNL & 2487'FEL, SEC.05)	7015.91	-1044.47	359.44	3194225.08	1400288.02	40°25'48.342"N	104°48'08.323"W	circle

WELLPATH COMPOSITION - Ref Wellbore: BOOMERANG 28N-3A-L AWB					Ref Wellpath: BOOMERANG 28N-3A-L AWP	
Start MD [ft]	End MD [ft]	Positional Uncertainty Model	Log Name/Comment		Wellbore	
20.00	1751.00	BHI NaviTrak (Standard)	13 1/2" SURFACE SECTION <86-1735>		BOOMERANG 28N-3A-L AWB	
1751.00	17239.00	BHI AutoTrak Curve (IFR1, Short)	8 1/2" MONOBORE <1834'-17239'>		BOOMERANG 28N-3A-L AWB	
17239.00	17263.00	Blind Drilling (std)	Projection to bit		BOOMERANG 28N-3A-L AWB	

Actual Wellpath Report

BOOMERANG 28N-3A-L AWP

Page 7 of 7



REFERENCE WELLPATH IDENTIFICATION			
Operator	SRC ENERGY	Slot	SLOT#15 BOOMERANG 28N-3A-L (1526'FNL & 2327'FWL, SEC.05)
Area	COLORADO	Well	BOOMERANG 28N-3A-L
Field	WELD COUNTY (NAD83, TRUE NORTH)	Wellbore	BOOMERANG 28N-3A-L AWB
Facility	SEC.05-T05N-R66W		

WELLPATH COMMENTS				
MD [ft]	Inclination [°]	Azimuth [°]	TVD [ft]	Comment
7650.00	89.970	87.030	7017.79	LANDING POINT (2605'FNL & 2366'FEL, SEC.05)
17239.00	88.680	84.880	6977.24	LAST BHGE MWD SURVEY (2585'FNL & 1805'FWL, SEC.03)
17263.00	88.680	84.880	6977.80	PROJECTION TO BIT (2582'FNL & 1829'FWL, SEC.03)