

# T5S, R96W, 6th P.M.

## Sec. 34

### LEGEND:

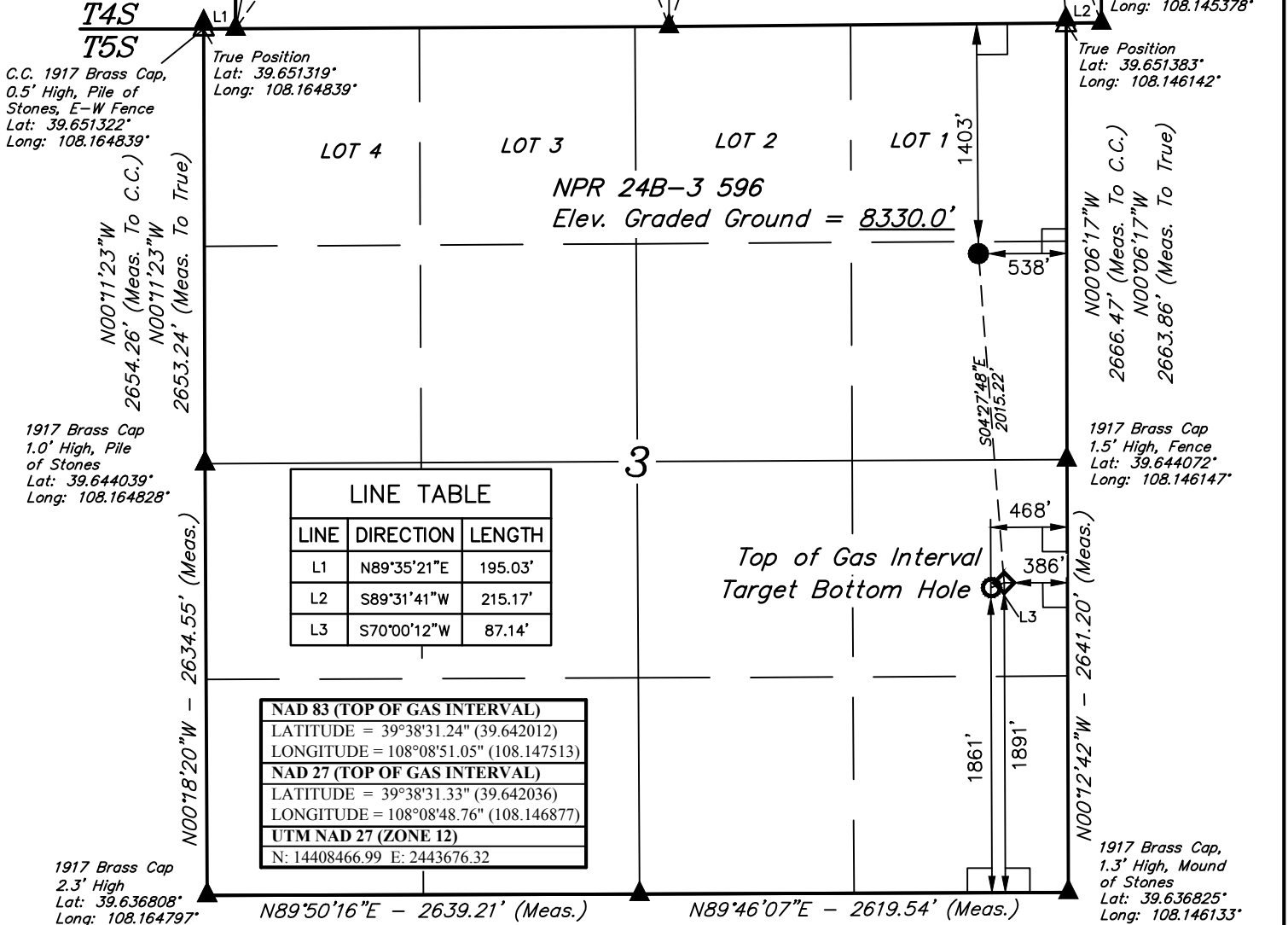
- = 90° SYMBOL
- = PROPOSED WELLHEAD.
- ◆ = TOP OF GAS INTERVAL
- = TARGET BOTTOM HOLE.
- ▲ = SECTION CORNERS LOCATED. (NAD 83)
- △ = SECTION CORNERS RE-ESTABLISHED. (Not Set on Ground.) (NAD 83)

SE Cor. Sec. 33  
1953 Brass Cap  
0.2' High, Pile  
of Stones, E-W Fence  
Lat: 39.651322°  
Long: 108.164147°

S 1/4 Cor. Sec. 34  
1953 Brass Cap, Flush  
W/Ground E-W Fence  
Lat: 39.651344°  
Long: 108.154747°

C.C. 1917 Brass Cap  
0.6' High, Mound  
of Stones  
Lat: 39.651392°  
Long: 108.146142°

SE Cor. Sec. 34  
1953 Brass Cap  
0.3' High, E-W  
Fence, Mound  
of Stones, Steel Post  
Lat: 39.651386°  
Long: 108.145378°



LINE TABLE		
LINE	DIRECTION	LENGTH
L1	N89°35'21"E	195.03'
L2	S89°31'41"W	215.17'
L3	S70°00'12"W	87.14'

NAD 83 (TOP OF GAS INTERVAL)	
LATITUDE = 39°38'31.24"	(39.642012)
LONGITUDE = 108°08'51.05"	(108.147513)
NAD 27 (TOP OF GAS INTERVAL)	
LATITUDE = 39°38'31.33"	(39.642036)
LONGITUDE = 108°08'48.76"	(108.146877)
UTM NAD 27 (ZONE 12)	
N: 14408466.99	E: 2443676.32

PDOP = 1.5



NAD 83 (SURFACE LOCATION)	NAD 83 (TARGET BOTTOM HOLE)
LATITUDE = 39°38'51.09" (39.647526)	LATITUDE = 39°38'30.95" (39.641931)
LONGITUDE = 108°08'52.99" (108.148053)	LONGITUDE = 108°08'52.09" (108.147804)
NAD 27 (SURFACE LOCATION)	NAD 27 (TARGET BOTTOM HOLE)
LATITUDE = 39°38'51.18" (39.647550)	LATITUDE = 39°38'31.04" (39.641955)
LONGITUDE = 108°08'50.70" (108.147417)	LONGITUDE = 108°08'49.81" (108.147168)
UTM NAD 27 (ZONE 12)	UTM NAD 27 (ZONE 12)
N: 14410470.50 E: 2443460.41	N: 14408434.79 E: 2443595.35

CERTIFICATE OF SURVEY  
 THIS IS TO CERTIFY THAT THE ABOVE PLAT WAS PREPARED AND THE LOCATION AS SHOWN WAS STAKED ON THE GROUND FROM FIELD NOTES OF ACTUAL SURVEYS MADE BY ME OR UNDER MY SUPERVISION AND THAT THE SAME ARE TRUE AND CORRECT TO THE BEST OF MY KNOWLEDGE AND BELIEF.  
 Handed Marshall  
 REGISTERED LAND SURVEYOR  
 REGISTRATION NO. 18180  
 STATE OF COLORADO 06-08-18

**BASIS OF BEARINGS**  
 BASIS OF BEARINGS IS A G.P.S. OBSERVATION  
**BASIS OF ELEVATION**  
 BENCH MARK (H79) LOCATED IN THE NE 1/4 OF SECTION 35, T4S, R98W, 6th P.M., TAKEN FROM THE BULL FORK, QUADRANGLE, COLORADO, 7.5 MINUTE SERIES (TOPOGRAPHIC MAP) PUBLISHED BY THE UNITED STATES DEPARTMENT OF THE INTERIOR, GEOLOGICAL SURVEY. SAID ELEVATION IS MARKED AS BEING 8535 FEET.



**UELS, LLC**  
 Corporate Office \* 85 South 200 East  
 Vernal, UT 84078 \* (435) 789-1017



**Caerus Oil & Gas LLC**  
 NPR 24B-3 596  
 SE 1/4 NE 1/4, SECTION 3, T5S, R96W, 6th P.M.  
 GARFIELD COUNTY, COLORADO

SURVEYED BY	BART HUNTING, C.R.	03-01-18	SCALE
DRAWN BY	M.D.	05-18-18	1" = 1000'

**WELL LOCATION PLAT**