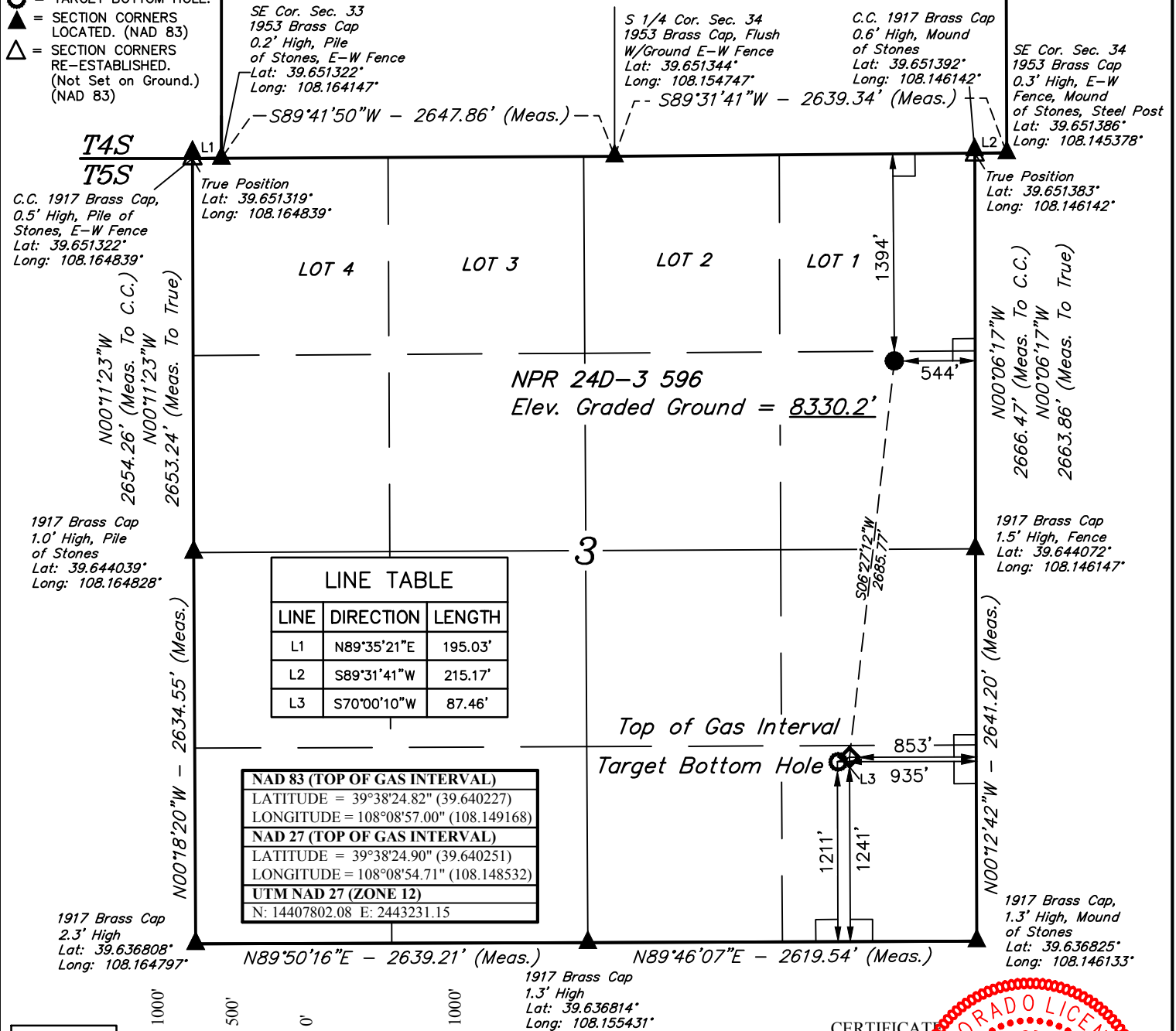


**LEGEND:**

- = 90° SYMBOL
- = PROPOSED WELLHEAD.
- ◇ = TOP OF GAS INTERVAL
- = TARGET BOTTOM HOLE.
- ▲ = SECTION CORNERS LOCATED. (NAD 83)
- △ = SECTION CORNERS RE-ESTABLISHED. (Not Set on Ground.) (NAD 83)

**T5S, R96W, 6th P.M.**

**Sec. 34**



NPR 24D-3 596  
Elev. Graded Ground = 8330.2'

Top of Gas Interval  
Target Bottom Hole

**CERTIFICATE**

THIS IS TO CERTIFY THAT THE ABOVE PLAT WAS PREPARED AND THE LOCATION AS SHOWN WAS STAKED ON THE GROUND FROM FIELD NOTES OF ACTUAL SURVEYS MADE BY ME OR UNDER MY SUPERVISION AND THAT THE SAME ARE TRUE AND CORRECT TO THE BEST OF MY KNOWLEDGE AND BELIEF.

*Handwritten Signature*

REGISTERED LAND SURVEYOR  
REGISTRATION NO. 18180  
STATE OF COLORADO 06-08-18

**COLORADO LICENSED SURVEYOR**  
**BRUCE NELSON**

NAD 83 (SURFACE LOCATION)	NAD 83 (TARGET BOTTOM HOLE)
LATITUDE = 39°38'51.17" (39.647548)	LATITUDE = 39°38'24.52" (39.640145)
LONGITUDE = 108°08'53.07" (108.148074)	LONGITUDE = 108°08'58.05" (108.149459)
NAD 27 (SURFACE LOCATION)	NAD 27 (TARGET BOTTOM HOLE)
LATITUDE = 39°38'51.26" (39.647573)	LATITUDE = 39°38'24.61" (39.640169)
LONGITUDE = 108°08'50.78" (108.147438)	LONGITUDE = 108°08'55.76" (108.148824)
UTM NAD 27 (ZONE 12)	UTM NAD 27 (ZONE 12)
N: 14410478.40 E: 2443454.30	N: 14407769.77 E: 2443149.89

**BASIS OF BEARINGS**  
BASIS OF BEARINGS IS A G.P.S. OBSERVATION

**BASIS OF ELEVATION**  
BENCH MARK (H79) LOCATED IN THE NE 1/4 OF SECTION 35, T4S, R98W, 6th P.M., TAKEN FROM THE BULL FORK, QUADRANGLE, COLORADO, 7.5 MINUTE SERIES (TOPOGRAPHIC MAP) PUBLISHED BY THE UNITED STATES DEPARTMENT OF THE INTERIOR, GEOLOGICAL SURVEY. SAID ELEVATION IS MARKED AS BEING 8535 FEET.



**UELS, LLC**  
Corporate Office \* 85 South 200 East  
Vernal, UT 84078 \* (435) 789-1017



**Caerus Oil & Gas LLC**

NPR 24D-3 596  
SE 1/4 NE 1/4, SECTION 3, T5S, R96W, 6th P.M.  
GARFIELD COUNTY, COLORADO

SURVEYED BY	BART HUNTING, C.R.	03-01-18	SCALE
DRAWN BY	M.D.	05-18-18	1" = 1000'

**WELL LOCATION PLAT**