

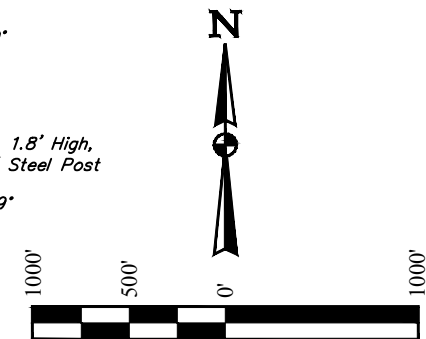
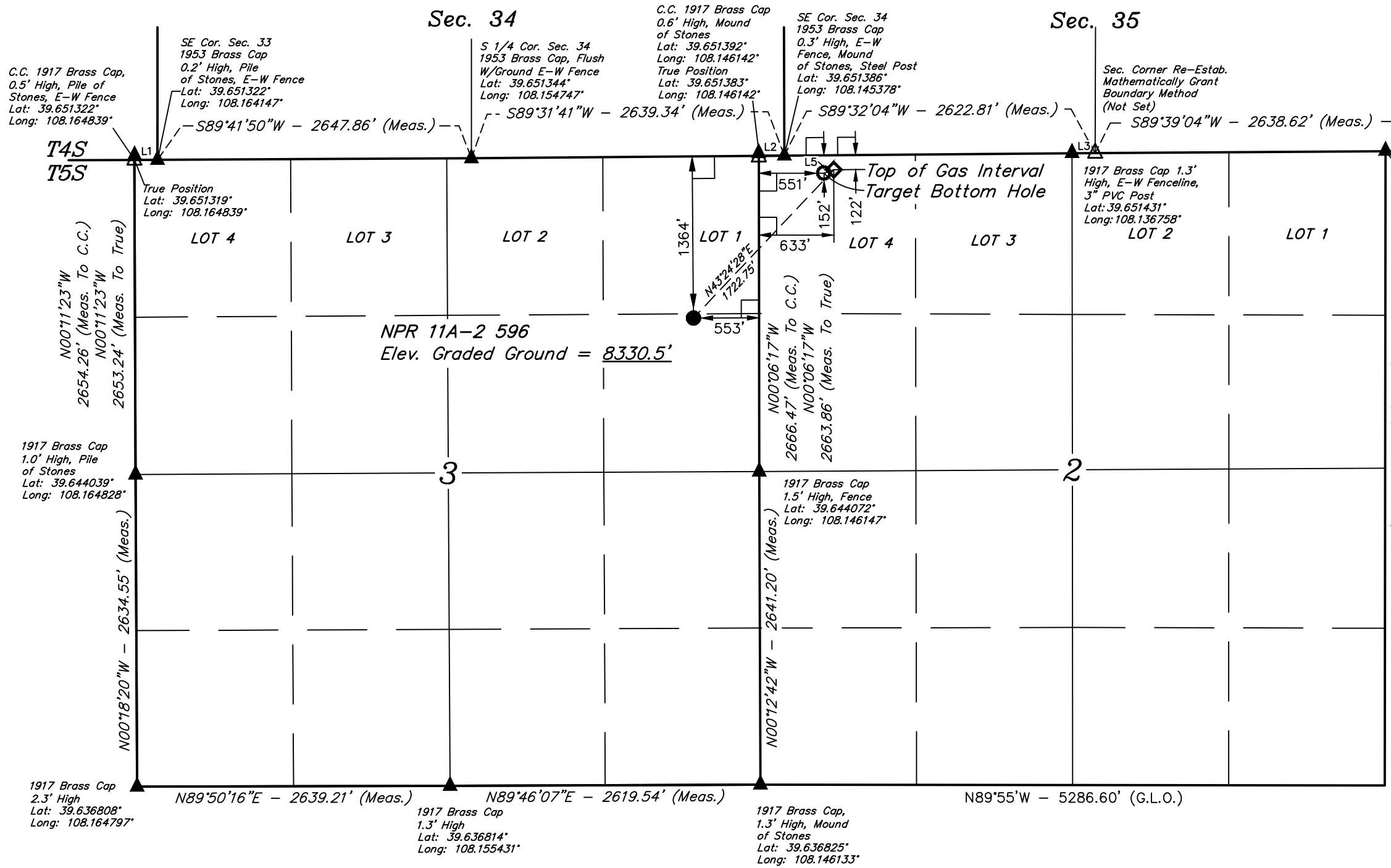
T5S, R96W, 6th P.M.

Caerus Oil & Gas LLC

NPR 11A-2 596
SE 1/4 NE 1/4, SECTION 3, T5S, R96W, 6th P.M.
GARFIELD COUNTY, COLORADO

BASIS OF BEARINGS
BASIS OF ELEVATION

BENCH MARK (H79) LOCATED IN THE NE 1/4 OF SECTION 35, T4S, R98W, 6th P.M., TAKEN FROM THE BULL FORK, QUADRANGLE, COLORADO, 7.5 MINUTE SERIES (TOPOGRAPHIC MAP) PUBLISHED BY THE UNITED STATES DEPARTMENT OF THE INTERIOR, GEOLOGICAL SURVEY. SAID ELEVATION IS MARKED AS BEING 8535 FEET.



LINE TABLE		
LINE	DIRECTION	LENGTH
L1	N89°35'21"E	195.03'
L2	S89°31'41"W	215.17'
L3	S89°32'04"W	195.14'
L4	N89°39'04"E	188.67'
L5	S70°00'08"W	87.55'

CERTIFICATE OF SURVEY
THIS IS TO CERTIFY THAT THE ABOVE PLAT WAS PREPARED AND THE LOCATION AS SHOWN WAS STAKED ON THE GROUND FROM FIELD NOTES OF ACTUAL SURVEYS MADE BY ME OR UNDER MY SUPERVISION AND THAT THE SAME ARE TRUE AND CORRECT TO THE BEST OF MY KNOWLEDGE AND BELIEF.
REGISTERED LAND SURVEYOR
REGISTRATION NO. 199180
STATE OF COLORADO



- LEGEND:**
- = 90° SYMBOL
 - = PROPOSED WELLHEAD.
 - ◆ = TOP OF GAS INTERVAL
 - = TARGET BOTTOM HOLE.
 - ▲ = SECTION CORNERS LOCATED. (NAD 83)
 - △ = SECTION CORNERS RE-ESTABLISHED. (Not Set on Ground.) (NAD 83)

PDOP = 1.5

NAD 83 (SURFACE LOCATION)	NAD 83 (TOP OF GAS INTERVAL)	NAD 83 (TARGET BOTTOM HOLE)
LATITUDE = 39°38'51.47" (39.647631)	LATITUDE = 39°39'03.81" (39.651058)	LATITUDE = 39°39'03.51" (39.650976)
LONGITUDE = 108°08'53.19" (108.148108)	LONGITUDE = 108°08'38.02" (108.143895)	LONGITUDE = 108°08'39.07" (108.144187)
NAD 27 (SURFACE LOCATION)	NAD 27 (TOP OF GAS INTERVAL)	NAD 27 (TARGET BOTTOM HOLE)
LATITUDE = 39°38'51.56" (39.647655)	LATITUDE = 39°39'03.90" (39.651082)	LATITUDE = 39°39'03.60" (39.651000)
LONGITUDE = 108°08'50.90" (108.147472)	LONGITUDE = 108°08'35.73" (108.143259)	LONGITUDE = 108°08'36.79" (108.143551)
UTM NAD 27 (ZONE 12)	UTM NAD 27 (ZONE 12)	UTM NAD 27 (ZONE 12)
N: 14410508.20 E: 2443443.80	N: 14411793.96 E: 2444590.21	N: 14411761.61 E: 2444508.86

UINTEAH
ENGINEERING & LAND SURVEYING

UELS, LLC
Corporate Office * 85 South 200 East
Vernal, UT 84078 * (435) 789-1017

SURVEYED BY	BART HUNTING, C.R.	03-01-18	SCALE
DRAWN BY	M.D.	05-18-18	1" = 1000'

WELL LOCATION PLAT