

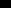
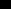


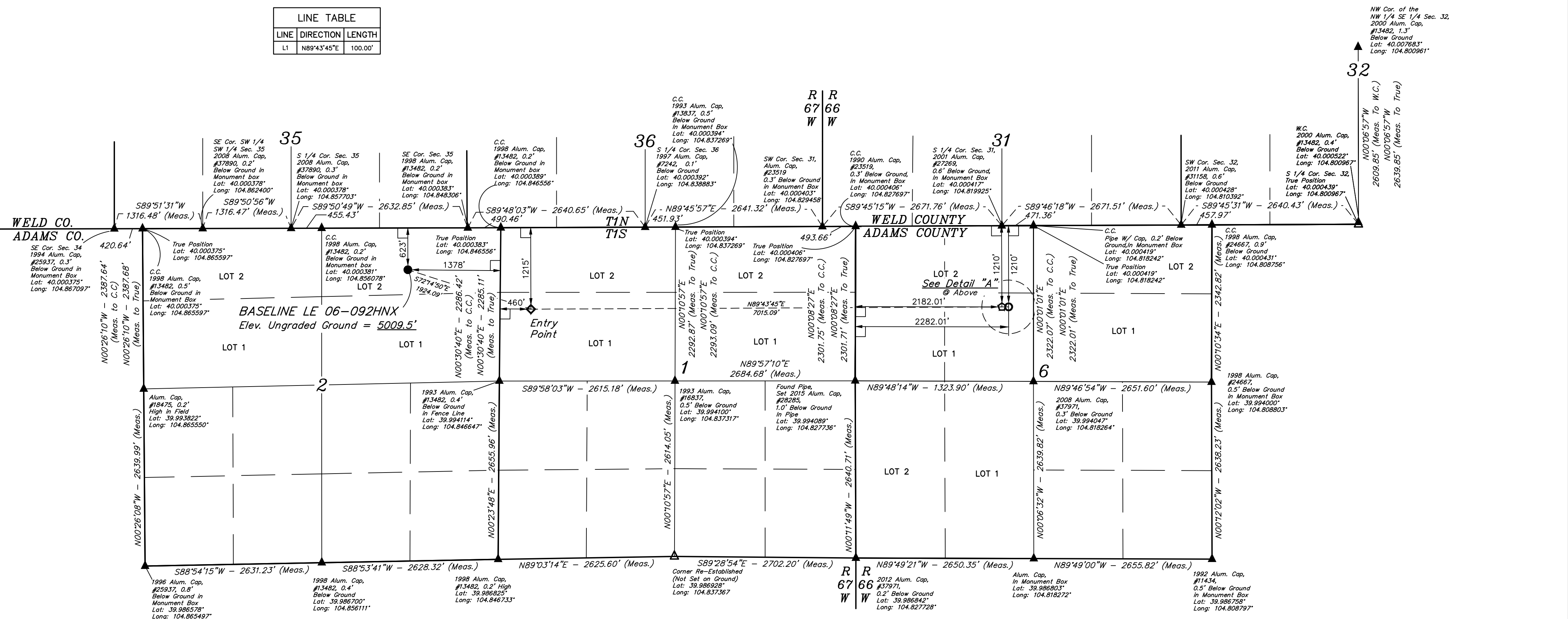
 = 90° SYMBOL  
 = PROPOSED WELLHEAD.  
 = TARGET BOTTOM HOLE.  
 = ENTRY POINT.  
 = BTM PERF.  
 = SECTION CORNERS LOC.  
 = SECTION CORNERS RE-  
 (Not Set on Ground.)

Diagram illustrating the layout for Detail "A" (No Scale). The diagram shows a circular area defined by a dashed line, representing a section line. Key dimensions and labels include:

- 1/16 Section Line** (top left label)
- 1210'** (vertical dimension from the top of the circle to the center of the hole)
- Target Bottom Hole** (label for the hole)
- 370'** (horizontal dimension from the center of the hole to the right edge of the circle)
- BTM PERF** (label for the bottom of the hole)
- 2182.01'** (horizontal dimension from the left edge of the circle to the center of the hole)
- 2282.01'** (horizontal dimension from the left edge of the circle to the right edge of the circle)
- 470'** (horizontal dimension from the center of the hole to the right edge of the circle)
- 1/4 Section Line** (bottom right label)

Detail "A"  
No Scale

LINE TABLE		
LINE	DIRECTION	LENGTH
L1	N89°43'45"E	100.00'



**PDOP = 1.4**



<b>NAD 83 (SURFACE LOCATION)</b>	<b>NAD 83 (ENTRY POINT)</b>	<b>NAD 83 (BTM PEAK)</b>	<b>NAD 83 (TARGET BOTTOM HOLE)</b>
LATITUDE = 39°59'55.22" (39.998672)	LATITUDE = 39°59'49.39" (39.997053)	LATITUDE = 39°59'49.55" (39.997097)	LATITUDE = 39°59'49.55" (39.997097)
LONGITUDE = 104°51'05.39" (104.851497)	LONGITUDE = 104°50'41.87" (104.844964)	LONGITUDE = 104°49'11.75" (104.819931)	LONGITUDE = 104°49'10.47" (104.819575)
<b>NAD 27 (SURFACE LOCATION)</b>	<b>NAD 27 (ENTRY POINT)</b>	<b>NAD 27 (BTM PEAK)</b>	<b>NAD 27 (TARGET BOTTOM HOLE)</b>
LATITUDE = 39°59'55.22" (39.998689)	LATITUDE = 39°59'49.44" (39.997067)	LATITUDE = 39°59'49.61" (39.997114)	LATITUDE = 39°59'49.61" (39.997114)
LONGITUDE = 104°51'03.48" (104.850967)	LONGITUDE = 104°50'39.66" (104.844433)	LONGITUDE = 104°49'08.85" (104.819403)	LONGITUDE = 104°49'08.57" (104.819047)

**BASIS OF BEARINGS**  
BASIS OF BEARINGS IS A G.P.S. OBSERVATION

---

**BASIS OF ELEVATION**

---

BENCHMARK JR 53 5026 LOCATED IN THE SW 1/4 SE 1/4  
OF SECTION 18, T1S, R68W, 6th P.M., TAKEN FROM 1988  
PUBLISHED DATUM BY THE UNITED STATES DEPARTMENT  
OF THE INTERIOR, GEOLOGICAL SURVEY AS BEING 5028 FEET.


**UELTS, LLC**  
 Corporate Office \* 85 South 200 East  
 Vernal, UT 84078 \* (435) 789-1017

CERTIFICATE

THIS IS TO CERTIFY THAT THE ABOVE PLAN WAS PREPARED FROM FIELD NOTES OF ACTUAL SURVEYS MADE BY ME OR UNDER MY SUPERVISION, AND THAT THE SAME ARE TRUE AND CORRECT TO THE BEST OF MY KNOWLEDGE AND BELIEF.

REGISTERED LAND SURVEYOR  
REGISTRATION NO. 28285  
STATE OF COLORADO

REV: 4 05-01-17 T.B. (ADD BTM PERF. &amp; BOTTOM HOLE CHANGE)

**GREAT WESTERN OPERATING COMPANY**

**BASELINE LE 06-092HNX**  
**NW 1/4 NE 1/4, SECTION 2, T1S, R67W, 6th P.M.**  
**ADAMS COUNTY, COLORADO**

<b>SURVEYED BY</b>	JARED CHISTOPHER	01-31-17	<b>SCALE</b>
<b>DRAWN BY</b>	L.C.S.	08-02-16	1" = 1000'

## WELL LOCATION PLAT