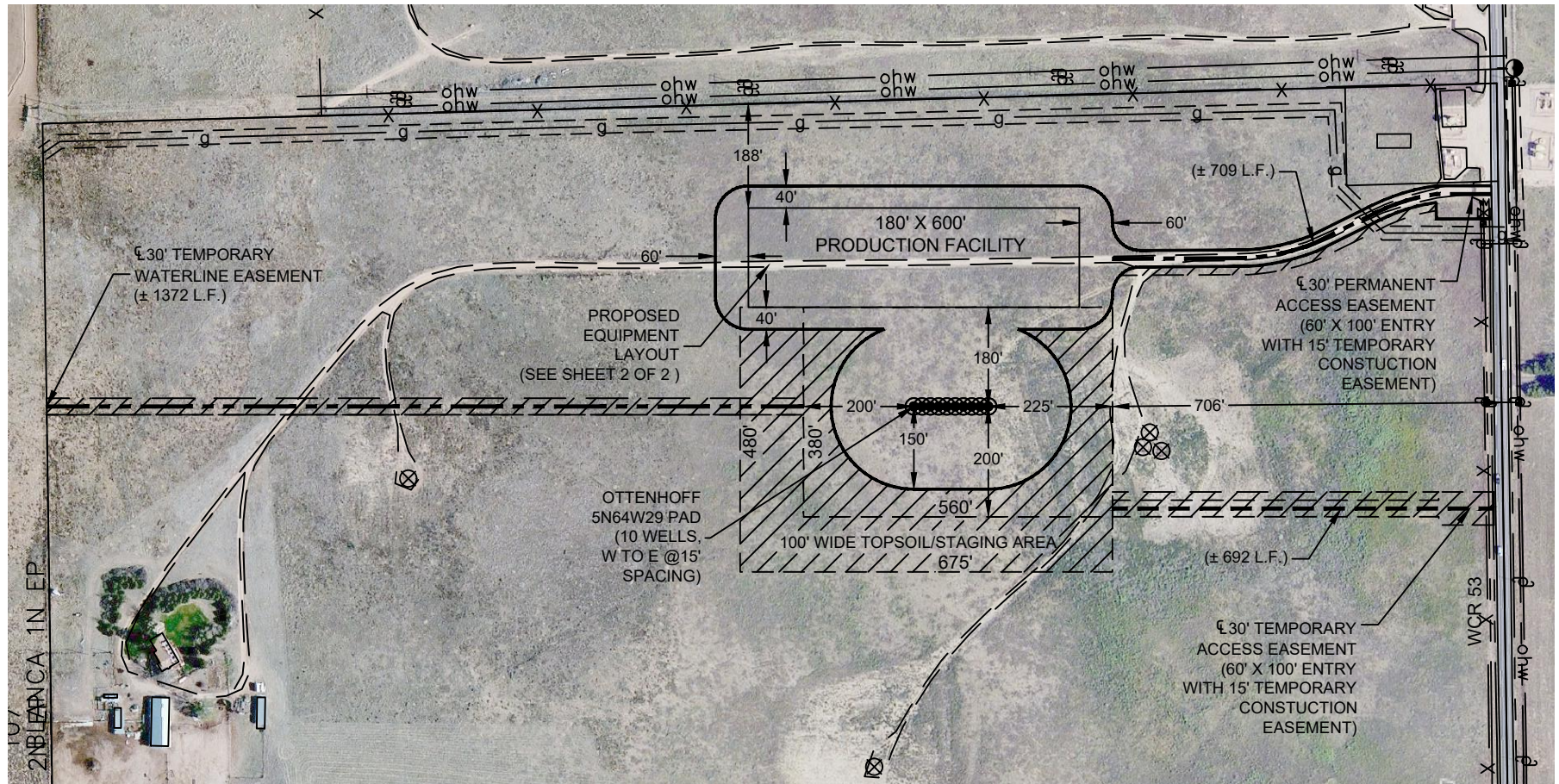




Washburn Land Surveying
www.WashburnSurveying.com
970-232-9645

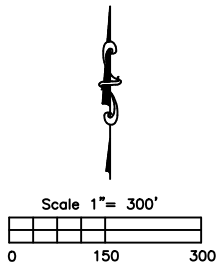
SCALED FACILITY OTTENHOFF 5N64W29CR PAD

SECTION: 29
TOWNSHIP: 5N
RANGE: 64W
6TH P.M.
WELD COUNTY, CO



/// RECLAIMED AREA(S)

TOTAL DISTURBED AREA OF LOCATION: ± 13.5 ACRES
TOTAL SIZE OF LOCATION AFTER RECLAMATION: ± 7.3 ACRES

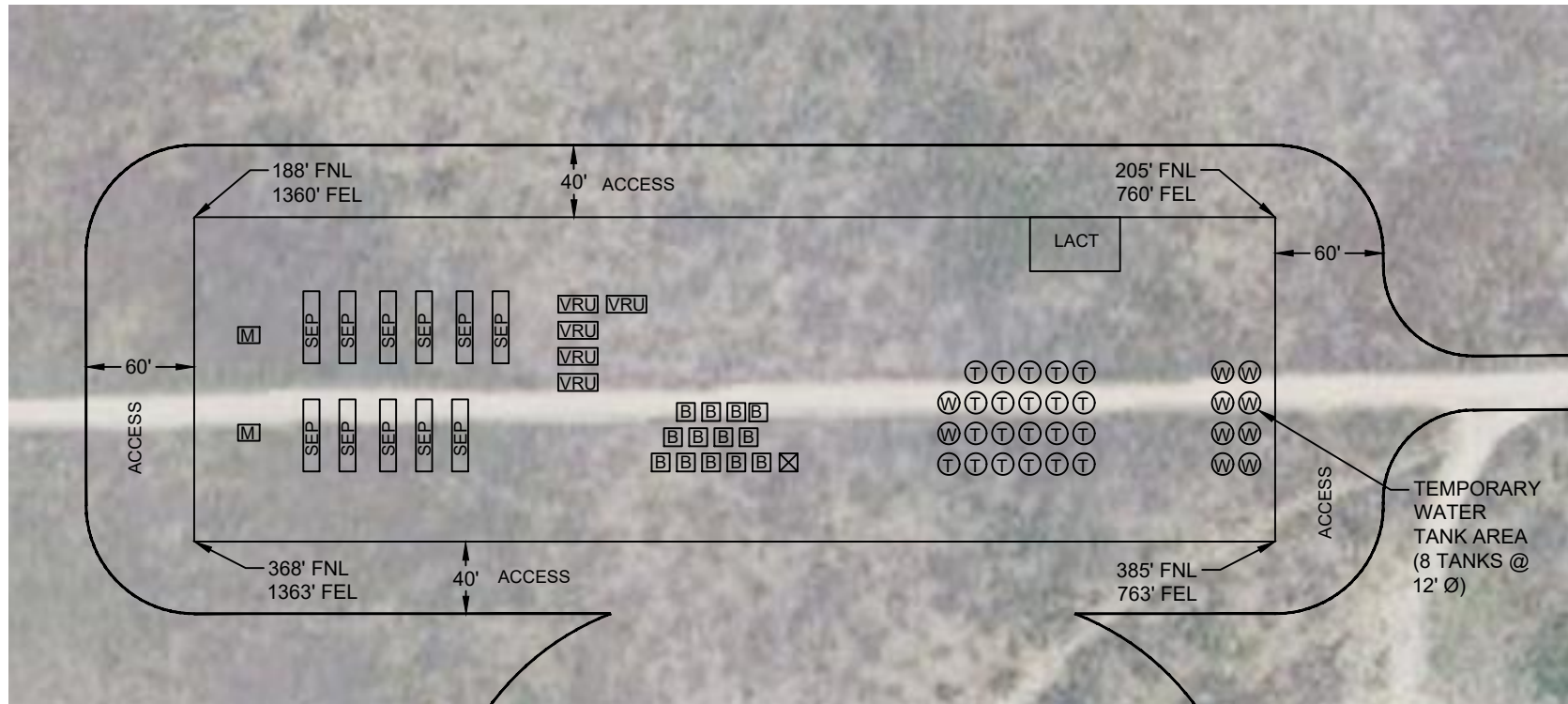




Washburn Land Surveying
www.WashburnSurveying.com
970-232-9645

SCALED FACILITY OTTENHOFF 5N64W29CR PAD

SECTION: 29
TOWNSHIP: 5N
RANGE: 64W
6TH P.M.
WELD COUNTY, CO



LEGEND:

⊙ TANK BATTERY

⊙ WATER VAULT

⊠ METER

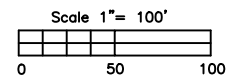
⊠ BURNER/ECD

⊠ SEP SEPARATOR

⊠ VRU VAPOR RECOVERY UNIT

⊠ BLOW CASE

⊠ LACT LACT UNIT



DATE: 6/1/2018 SHEET 2 OF 2