

## MULTI-WELL PLAN

D29-22 PAD

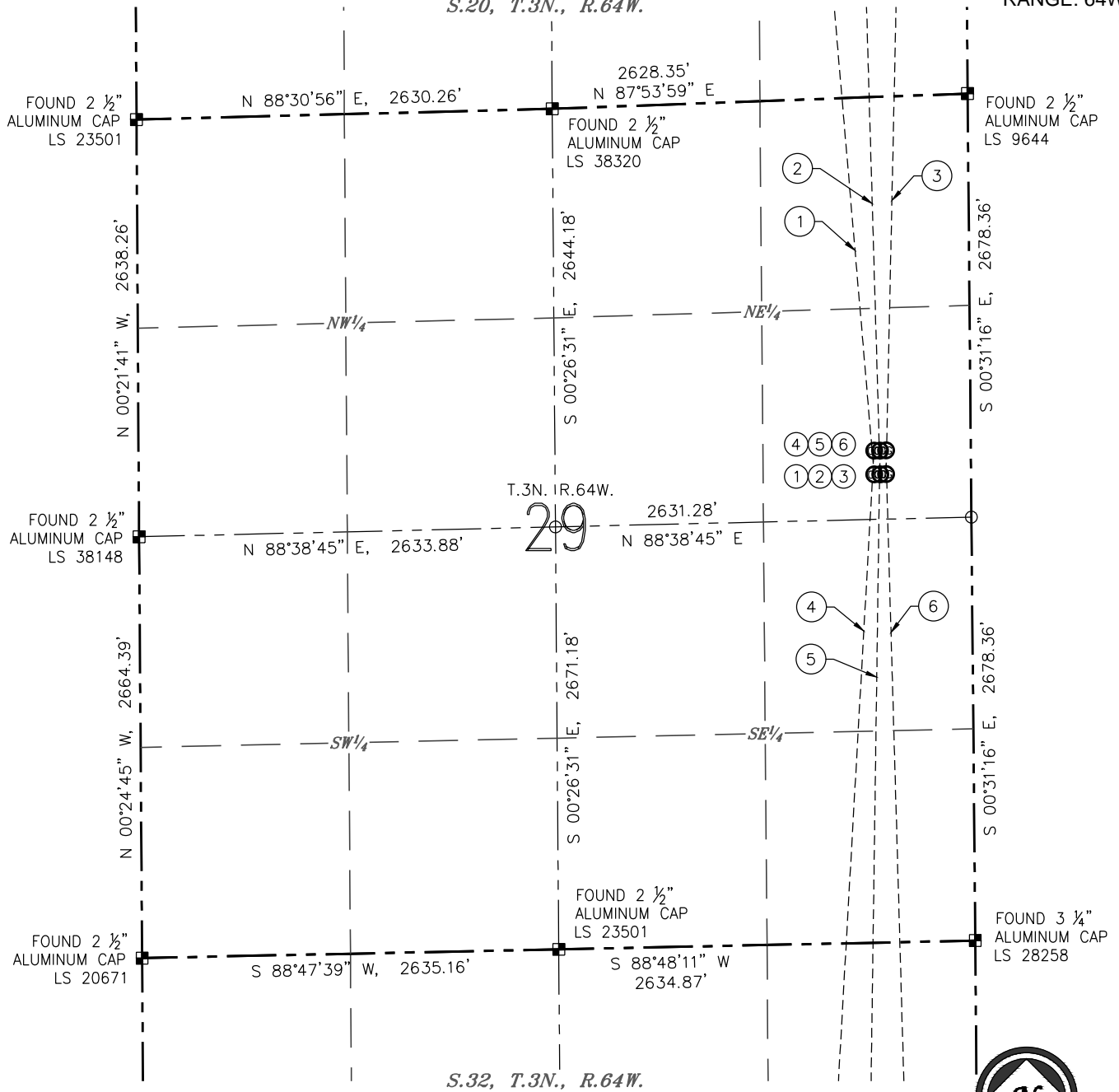
(SHEET 1 OF 6)

S.20, T.3N., R.64W.

SECTION: 29

TOWNSHIP: 3N

RANGE: 64W



## NOTES:

1. HORIZONTAL DATUM IS NAD 83.
2. VERTICAL DATUM IS NAVD 88.



0 1000'

SCALE: 1" = 1000'

- BOTTOM HOLE DATA -						- BORE PATH -	
NO.	WELL NAME	FOOTAGES		LATITUDE	LONGITUDE	S-T-R	BEARING, DISTANCE
1	GUTTERSEN D29-730	2565' FSL	1410' FEL	N 40.22516°	W 104.57067°	17-3-64	N 04°53'24" W, 10229.20'
2	GUTTERSEN D29-722	2565' FSL	797' FEL	N 40.22517°	W 104.56847°	17-3-64	N 01°39'54" W, 10204.88'
3	GUTTERSEN STATE D29-714	2565' FSL	244' FEL	N 40.22517°	W 104.56649°	17-3-64	N 01°13'43" E, 10210.58'
4	GUTTERSEN Y05-734	75' FSL	1472' FEL	N 40.16037°	W 104.57117°	5-2-64	S 03°13'35" W, 13581.22'
5	GUTTERSEN Y05-726	75' FSL	859' FEL	N 40.16038°	W 104.56898°	5-2-64	S 00°47'56" W, 13550.50'
6	GUTTERSEN STATE Y05-719	75' FSL	246' FEL	N 40.16040°	W 104.56678°	5-2-64	S 01°38'07" E, 13544.20'

- LEGEND
- ⊙ PROPOSED WELL
  - FOUND MONUMENT
  - CALCULATED POSITION
  - ⊗ EXISTING WELL

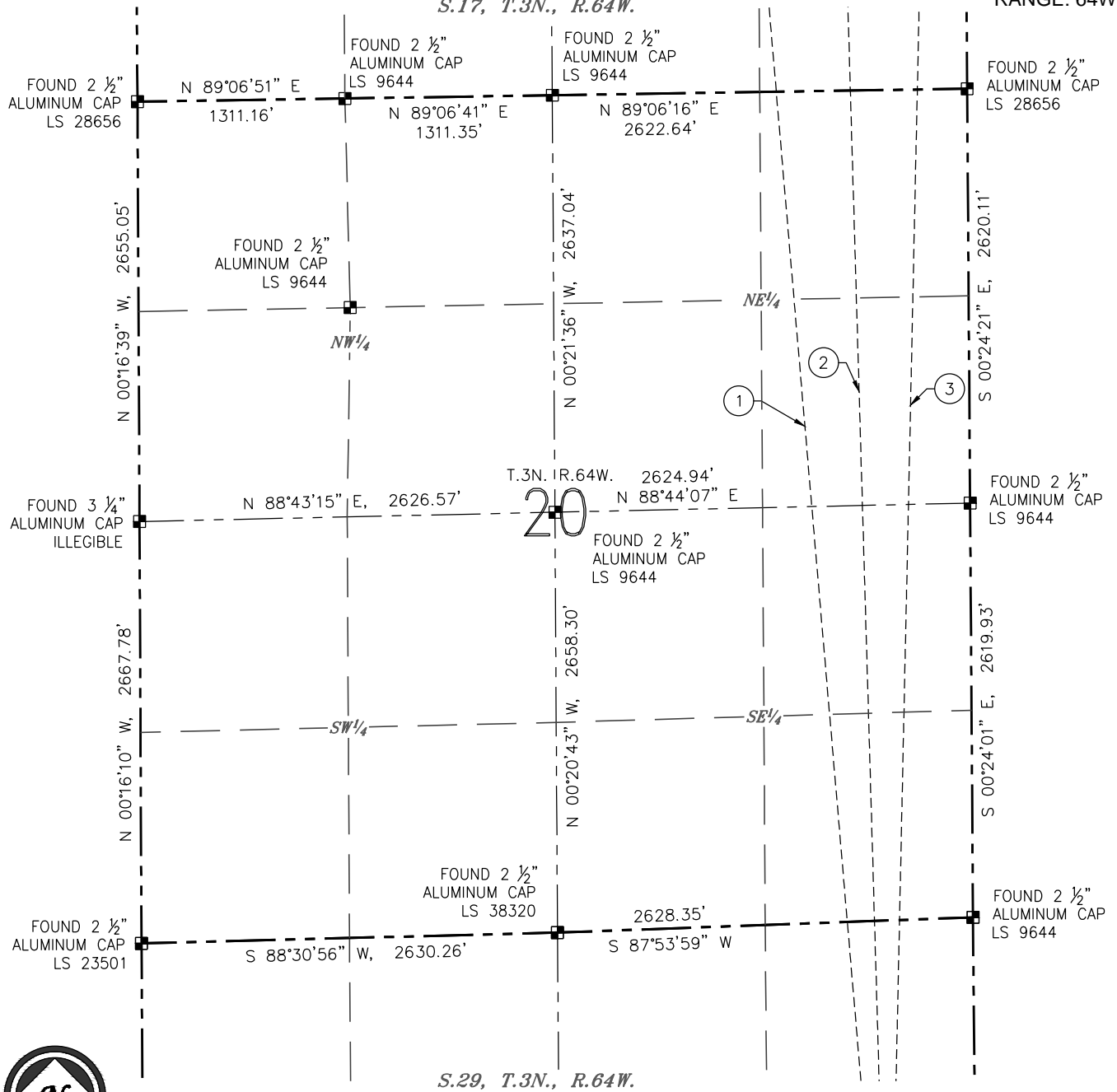
DATE: 03/20/2018  
JOB #: NE17302

## MULTI-WELL PLAN

D29-22 PAD

(SHEET 2 OF 6)

S.17, T.3N., R.64W.

SECTION: 29  
TOWNSHIP: 3N  
RANGE: 64W

0 1000'

SCALE: 1" = 1000'

## NOTES:

- HORIZONTAL DATUM IS NAD 83.
- VERTICAL DATUM IS NAVD 88.

## - BOTTOM HOLE DATA -

NO.	WELL NAME	FOOTAGES	LATITUDE	LONGITUDE	S-T-R	BEARING, DISTANCE
1	GUTTERSEN D29-730	2565' FSL 1410' FEL	N 40.22516°	W 104.57067°	17-3-64	N 04°53'24" W, 10229.20'
2	GUTTERSEN D29-722	2565' FSL 797' FEL	N 40.22517°	W 104.56847°	17-3-64	N 01°39'54" W, 10204.88'
3	GUTTERSEN STATE D29-714	2565' FSL 244' FEL	N 40.22517°	W 104.56649°	17-3-64	N 01°13'43" E, 10210.58'
4	GUTTERSEN Y05-734	75' FSL 1472' FEL	N 40.16037°	W 104.57117°	5-2-64	S 03°13'35" W, 13581.22'
5	GUTTERSEN Y05-726	75' FSL 859' FEL	N 40.16038°	W 104.56898°	5-2-64	S 00°47'56" W, 13550.50'
6	GUTTERSEN STATE Y05-719	75' FSL 246' FEL	N 40.16040°	W 104.56678°	5-2-64	S 01°38'07" E, 13544.20'

## - BORE PATH -

## LEGEND

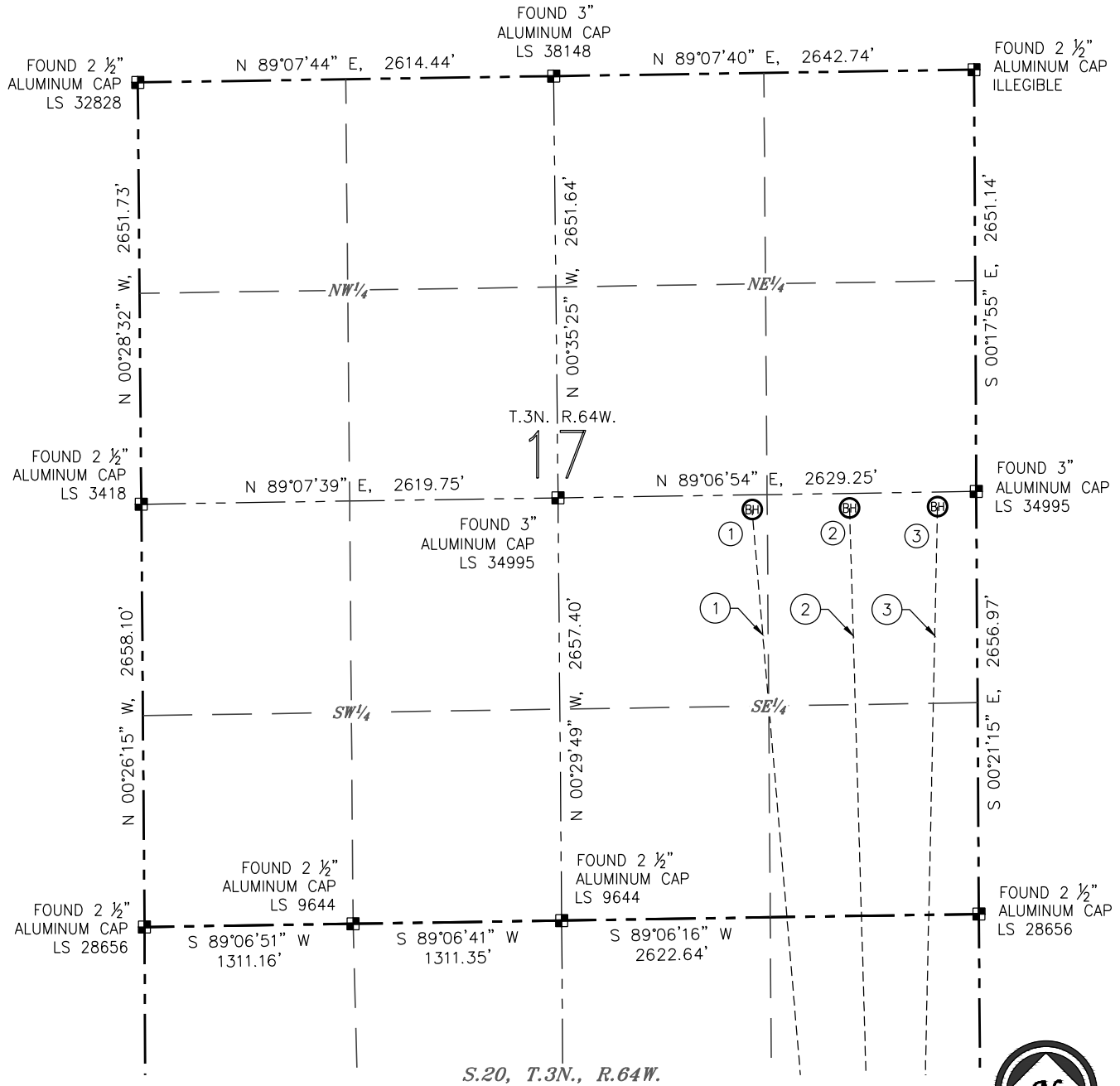
- ⊙ PROPOSED WELL
- FOUND MONUMENT
- CALCULATED POSITION
- ⊗ EXISTING WELL

DATE: 03/20/2018  
JOB #: NE17302

## MULTI-WELL PLAN

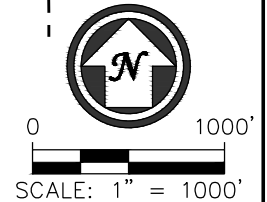
**D29-22 PAD**  
(SHEET 3 OF 6)

SECTION: 29  
TOWNSHIP: 3N  
RANGE: 64W



## NOTES:

1. HORIZONTAL DATUM IS NAD 83.
2. VERTICAL DATUM IS NAVD 88.



- BOTTOM HOLE DATA -						- BORE PATH -	
NO.	WELL NAME	FOOTAGES		LATITUDE	LONGITUDE	S-T-R	BEARING, DISTANCE
1	GUTTERSEN D29-730	2565' FSL	1410' FEL	N 40.22516°	W 104.57067°	17-3-64	N 04°53'24" W, 10229.20'
2	GUTTERSEN D29-722	2565' FSL	797' FEL	N 40.22517°	W 104.56847°	17-3-64	N 01°39'54" W, 10204.88'
3	GUTTERSEN STATE D29-714	2565' FSL	244' FEL	N 40.22517°	W 104.56649°	17-3-64	N 01°13'43" E, 10210.58'
4	GUTTERSEN Y05-734	75' FSL	1472' FEL	N 40.16037°	W 104.57117°	5-2-64	S 03°13'35" W, 13581.22'
5	GUTTERSEN Y05-726	75' FSL	859' FEL	N 40.16038°	W 104.56898°	5-2-64	S 00°47'56" W, 13550.50'
6	GUTTERSEN STATE Y05-719	75' FSL	246' FEL	N 40.16040°	W 104.56678°	5-2-64	S 01°38'07" E, 13544.20'

- LEGEND**
- ⊙ PROPOSED WELL
  - FOUND MONUMENT
  - CALCULATED POSITION
  - ⊗ EXISTING WELL

DATE: 03/20/2018  
JOB #: NE17302

## MULTI-WELL PLAN

D29-22 PAD

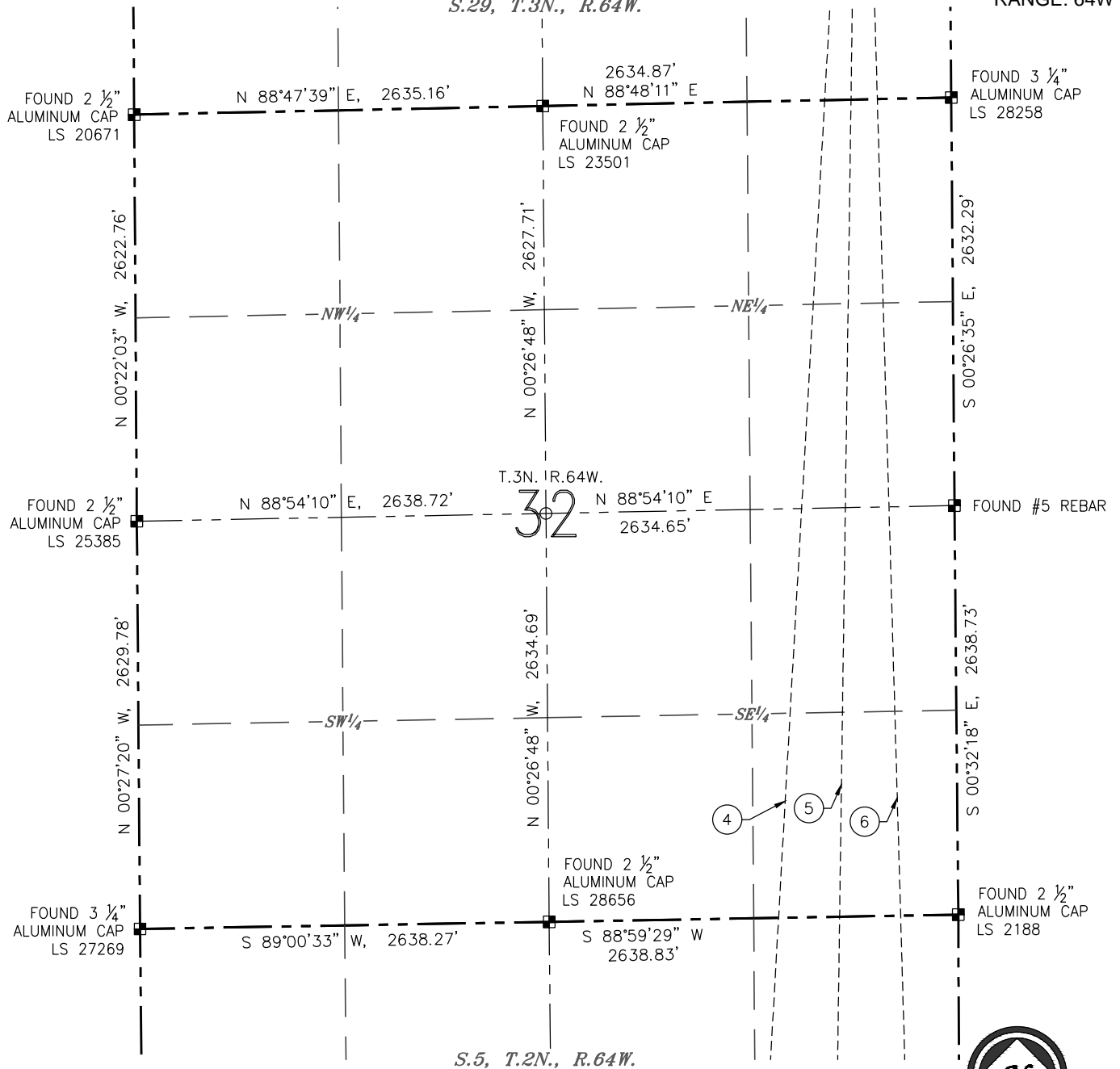
(SHEET 4 OF 6)

*S.29, T.3N., R.64W.*

SECTION: 29

TOWNSHIP: 3N

RANGE: 64W



NOTES:

- NOTES:
1. HORIZONTAL DATUM IS NAD 83.
  2. VERTICAL DATUM IS NAVD 88.







0 1000'

SCALE: 1" = 1000'

- BOTTOM HOLE DATA -							- BORE PATH -
NO.	WELL NAME	FOOTAGES		LATITUDE	LONGITUDE	S-T-R	BEARING, DISTANCE
1	GUTTERSEN D29-730	2565' FSL	1410' FEL	N 40.22516°	W 104.57067°	17-3-64	N 04°53'24" W, 10229.20'
2	GUTTERSEN D29-722	2565' FSL	797' FEL	N 40.22517°	W 104.56847°	17-3-64	N 01°39'54" W, 10204.88'
3	GUTTERSEN STATE D29-714	2565' FSL	244' FEL	N 40.22517°	W 104.56649°	17-3-64	N 01°13'43" E, 10210.58'
4	GUTTERSEN Y05-734	75' FSL	1472' FEL	N 40.16037°	W 104.57117°	5-2-64	S 03°13'35" W, 13581.22'
5	GUTTERSEN Y05-726	75' FSL	859' FEL	N 40.16038°	W 104.56898°	5-2-64	S 00°47'56" W, 13550.50'
6	GUTTERSEN STATE Y05-719	75' FSL	246' FEL	N 40.16040°	W 104.56678°	5-2-64	S 01°38'07" E, 13544.20'

### LEGEND

-  PROPOSED WELL  
 FOUND MONUMENT  
 CALCULATED POSITION  
 EXISTING WELL

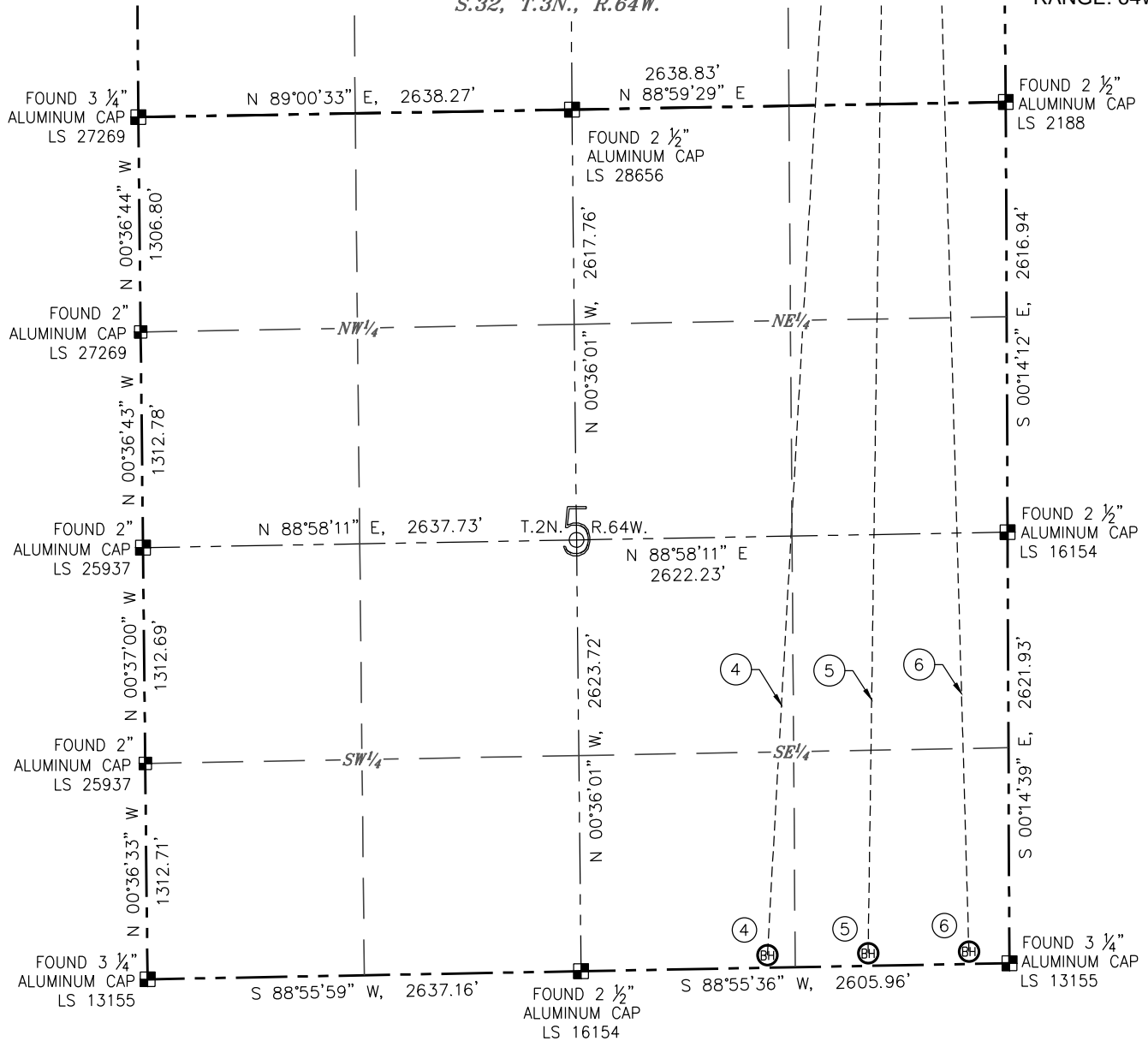
DATE: 03/20/2018  
JOB #: NE17302

## MULTI-WELL PLAN

D29-22 PAD

(SHEET 5 OF 6)

S.32, T.3N., R.64W.

SECTION: 29  
TOWNSHIP: 3N  
RANGE: 64W

## NOTES:

1. HORIZONTAL DATUM IS NAD 83.
2. VERTICAL DATUM IS NAVD 88.



0 1000'

SCALE: 1" = 1000'

- BOTTOM HOLE DATA -						- BORE PATH -	
NO.	WELL NAME	FOOTAGES	LATITUDE	LONGITUDE	S-T-R	BEARING, DISTANCE	
1	GUTTERSEN D29-730	2565' FSL 1410' FEL	N 40.22516°	W 104.57067°	17-3-64	N 04°53'24" W, 10229.20'	
2	GUTTERSEN D29-722	2565' FSL 797' FEL	N 40.22517°	W 104.56847°	17-3-64	N 01°39'54" W, 10204.88'	
3	GUTTERSEN STATE D29-714	2565' FSL 244' FEL	N 40.22517°	W 104.56649°	17-3-64	N 01°13'43" E, 10210.58'	
4	GUTTERSEN Y05-734	75' FSL 1472' FEL	N 40.16037°	W 104.57117°	5-2-64	S 03°13'35" W, 13581.22'	
5	GUTTERSEN Y05-726	75' FSL 859' FEL	N 40.16038°	W 104.56898°	5-2-64	S 00°47'56" W, 13550.50'	
6	GUTTERSEN STATE Y05-719	75' FSL 246' FEL	N 40.16040°	W 104.56678°	5-2-64	S 01°38'07" E, 13544.20'	

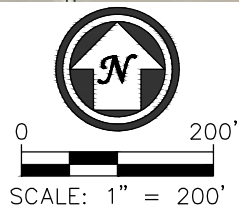
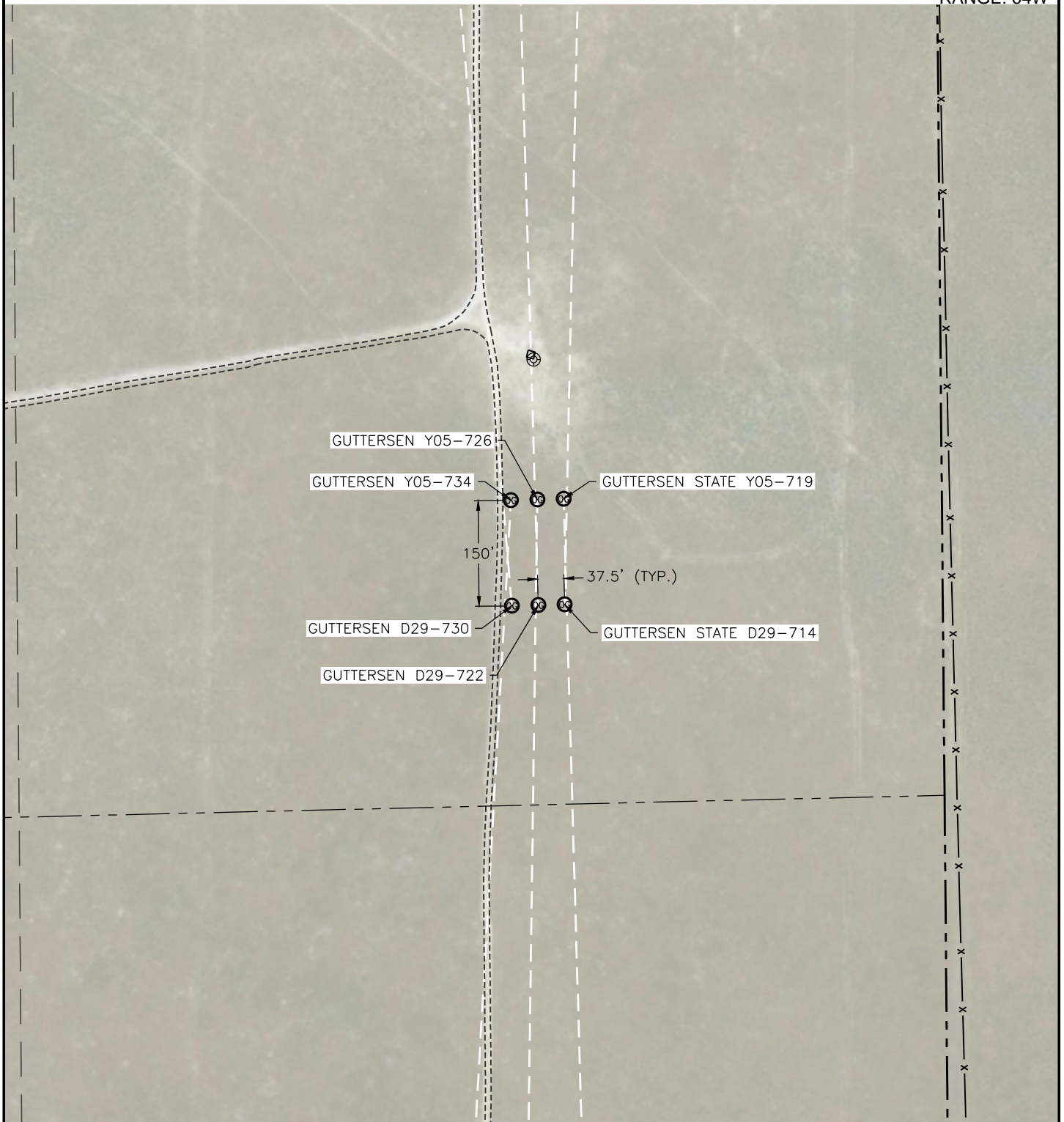
- LEGEND
- ⊙ PROPOSED WELL
  - FOUND MONUMENT
  - CALCULATED POSITION
  - ⊗ EXISTING WELL

DATE: 03/20/2018  
JOB #: NE17302

## MULTI-WELL PLAN

D29-22 PAD  
(SHEET 6 OF 6)

SECTION: 29  
TOWNSHIP: 3N  
RANGE: 64W



## LEGEND

- PROPOSED WELL
- EXISTING WELL

DATE: 03/20/2018  
JOB #: NE17302