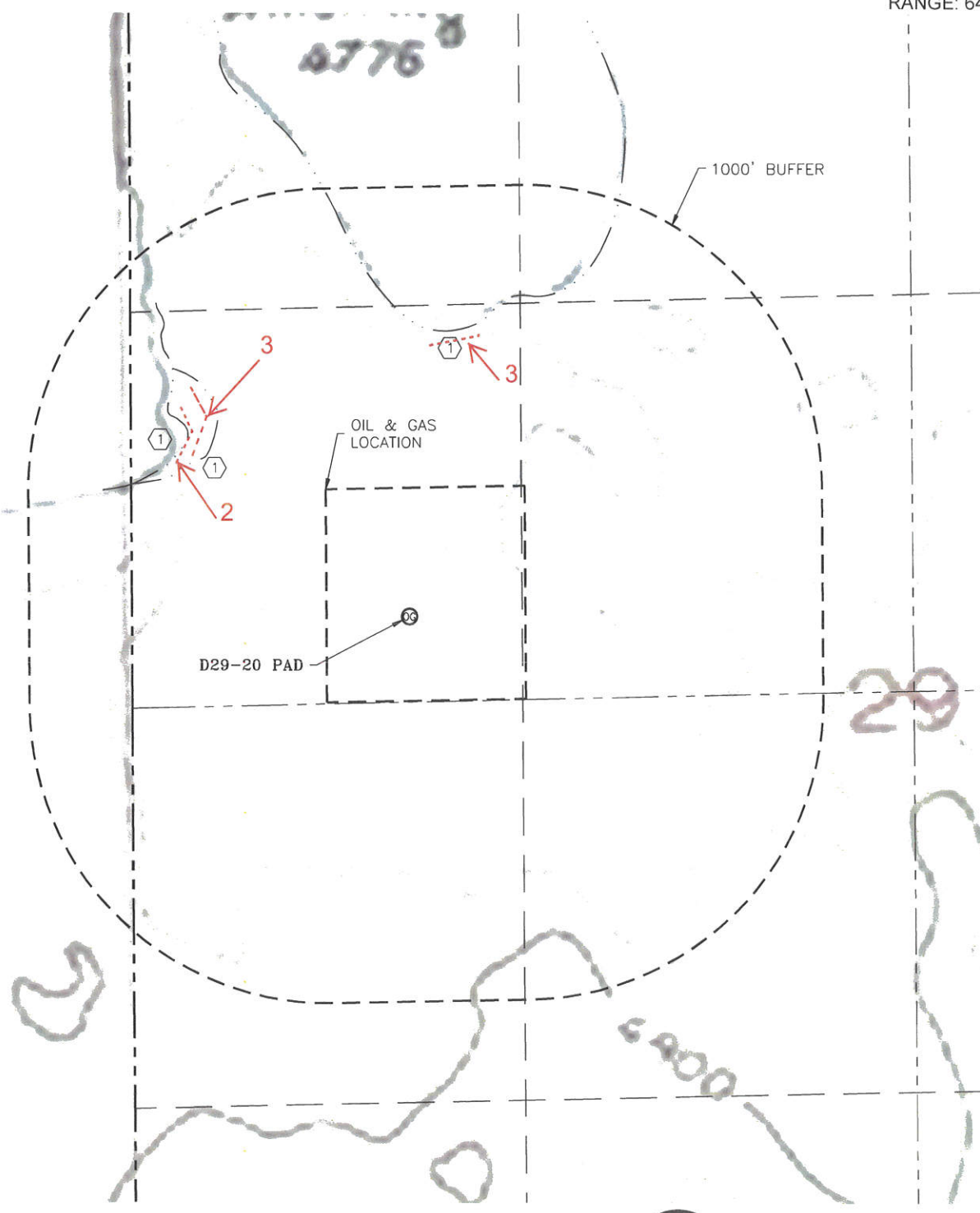


HYDROLOGY MAP

D29-20 PAD

SECTION: 29
TOWNSHIP: 3N
RANGE: 64W



DISTANCES MEASURED FROM THE EDGE OF THE OIL & GAS LOCATION UNLESS NOTED OTHERWISE:

- ① DRY SWALE 417' W, 521' N, 522' W
- 2 Dry Creek Bed with OHWM 482' NW
- 3 Wetland 433' NW, 519' N



0 500'

SCALE: 1" = 500'

LEGEND

⊗ PROPOSED WELL

DATE: 03/19/2018
JOB #: NE17302