

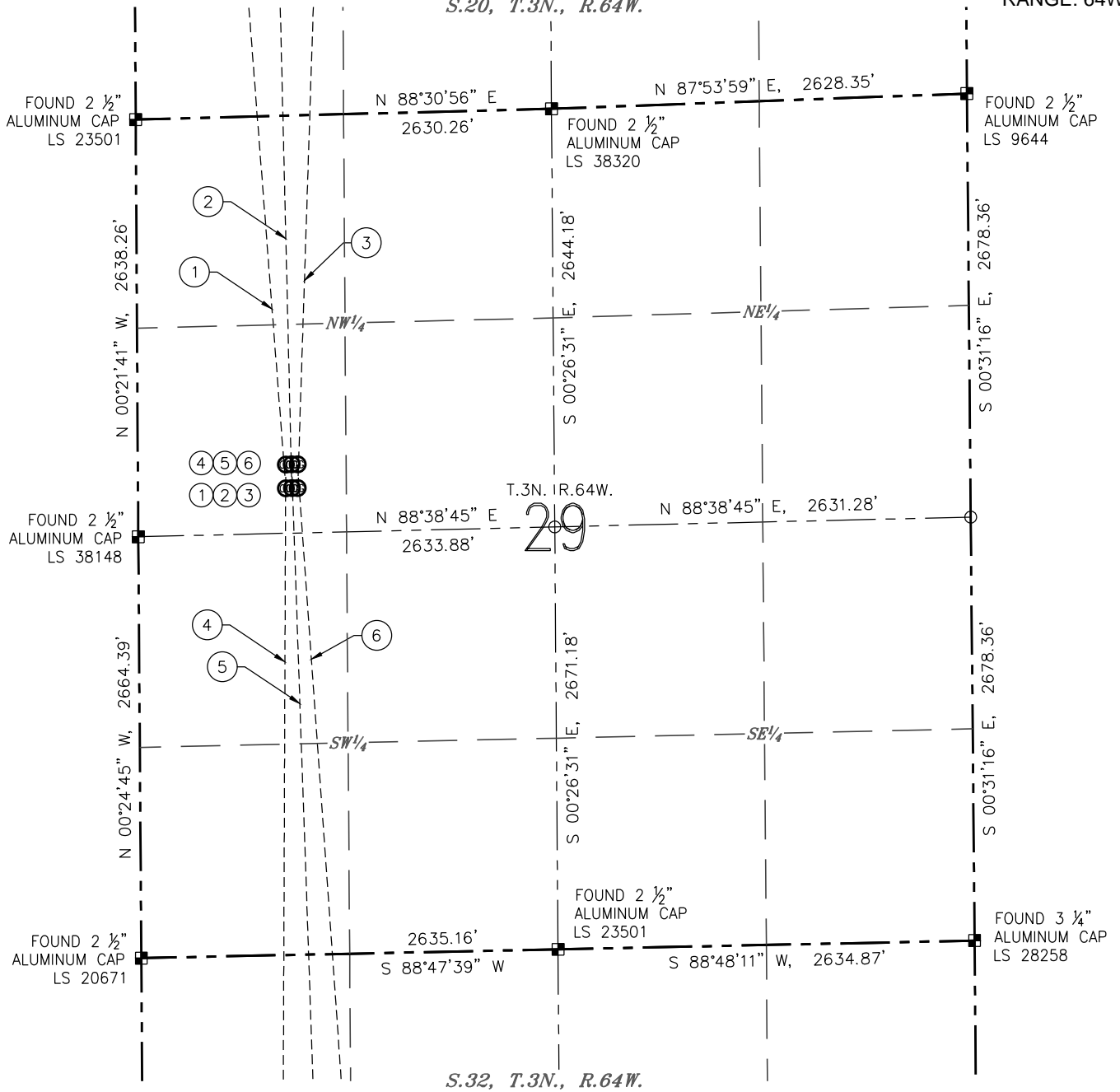
MULTI-WELL PLAN

D29-20 PAD

(SHEET 1 OF 6)

S.20, T.3N., R.64W.

SECTION: 29
TOWNSHIP: 3N
RANGE: 64W



NOTES:

- HORIZONTAL DATUM IS NAD 83.
- VERTICAL DATUM IS NAVD 88.



- BOTTOM HOLE DATA -					- BORE PATH -	
NO.	WELL NAME	FOOTAGES	LATITUDE	LONGITUDE	S-T-R	BEARING, DISTANCE
1	GUTTERSEN D29-786	2565' FSL 209' FWL	N 40.22511°	W 104.58366°	17-3-64	N 04°23'42" W, 10253.30'
2	GUTTERSEN D29-778	2565' FSL 788' FWL	N 40.22511°	W 104.58159°	17-3-64	N 01°22'04" W, 10234.22'
3	GUTTERSEN D29-770	2565' FSL 1401' FWL	N 40.22512°	W 104.57940°	17-3-64	N 01°51'08" E, 10245.35'
4	GUTTERSEN Y05-786	75' FSL 768' FWL	N 40.16030°	W 104.58192°	5-2-64	S 00°13'14" W, 13528.28'
5	GUTTERSEN Y05-779	75' FSL 1326' FWL	N 40.16031°	W 104.57992°	5-2-64	S 01°59'03" E, 13526.69'
6	GUTTERSEN Y05-771	75' FSL 1854' FWL	N 40.16033°	W 104.57803°	5-2-64	S 04°03'34" E, 13543.52'

- LEGEND**
- ⊗ PROPOSED WELL
 - FOUND MONUMENT
 - CALCULATED POSITION
 - ⊙ EXISTING WELL

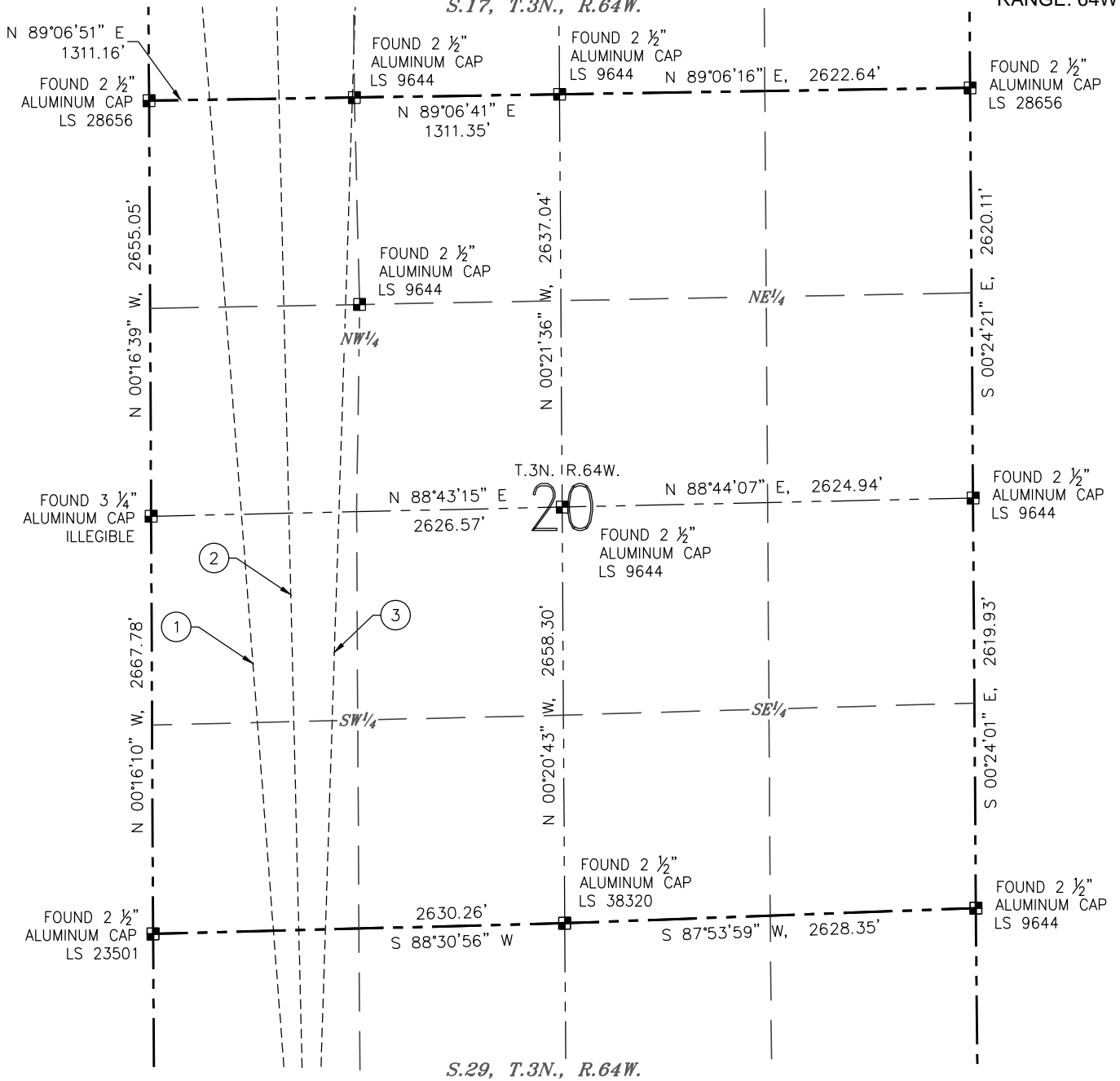
DATE: 03/20/2018
JOB #: NE17302

MULTI-WELL PLAN

D29-20 PAD
(SHEET 2 OF 6)

S.17, T.3N., R.64W.

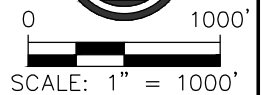
SECTION: 29
TOWNSHIP: 3N
RANGE: 64W



S.29, T.3N., R.64W.

NOTES:

- HORIZONTAL DATUM IS NAD 83.
- VERTICAL DATUM IS NAVD 88.



- BOTTOM HOLE DATA -					- BORE PATH -	
NO.	WELL NAME	FOOTAGES	LATITUDE	LONGITUDE	S-T-R	BEARING, DISTANCE
1	GUTTERSEN D29-786	2565' FSL 209' FWL	N 40.22511°	W 104.58366°	17-3-64	N 04°23'42" W, 10253.30'
2	GUTTERSEN D29-778	2565' FSL 788' FWL	N 40.22511°	W 104.58159°	17-3-64	N 01°22'04" W, 10234.22'
3	GUTTERSEN D29-770	2565' FSL 1401' FWL	N 40.22512°	W 104.57940°	17-3-64	N 01°51'08" E, 10245.35'
4	GUTTERSEN Y05-786	75' FSL 768' FWL	N 40.16030°	W 104.58192°	5-2-64	S 00°13'14" W, 13528.28'
5	GUTTERSEN Y05-779	75' FSL 1326' FWL	N 40.16031°	W 104.57992°	5-2-64	S 01°59'03" E, 13526.69'
6	GUTTERSEN Y05-771	75' FSL 1854' FWL	N 40.16033°	W 104.57803°	5-2-64	S 04°03'34" E, 13543.52'

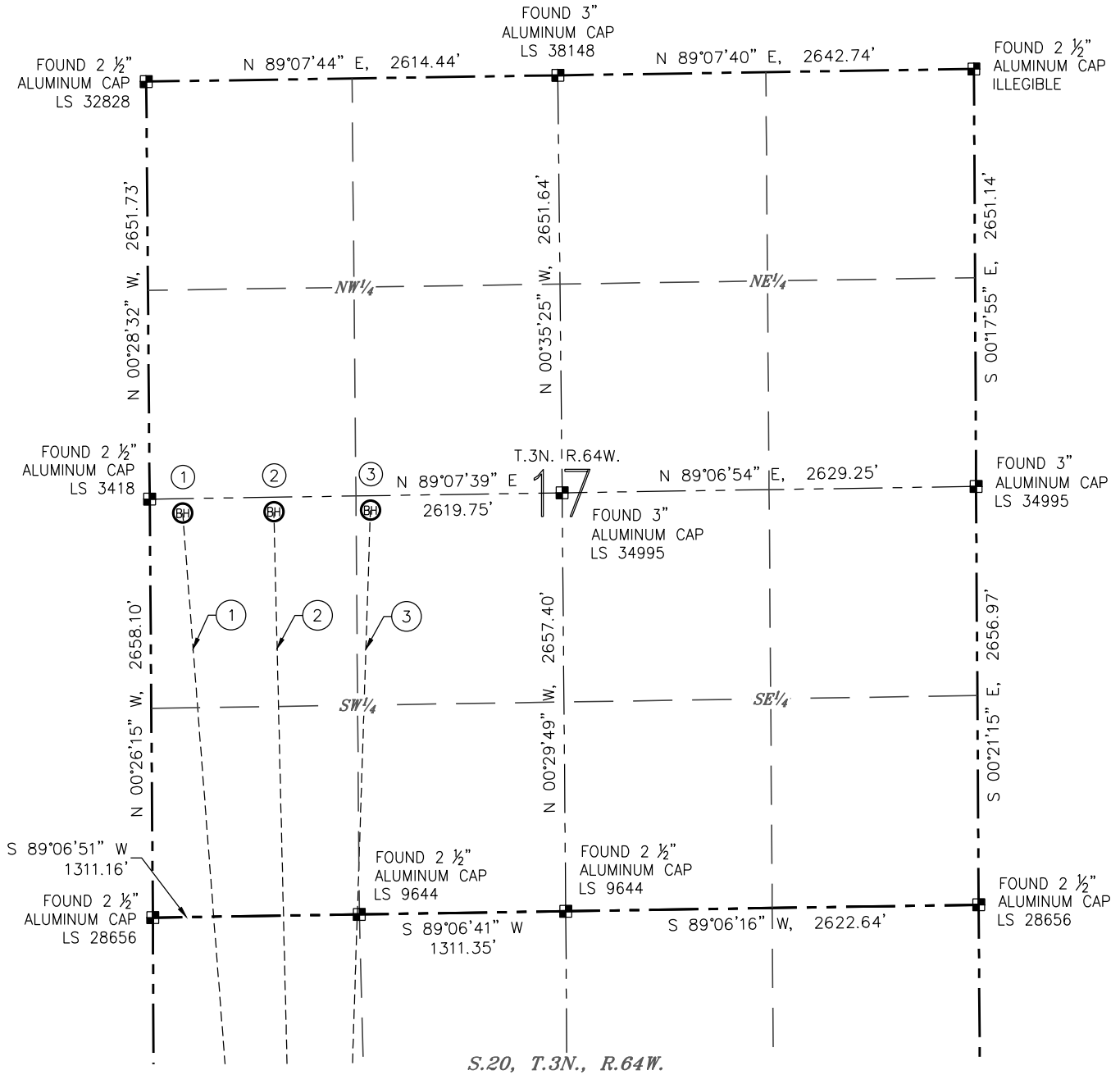
- LEGEND**
- ⊗ PROPOSED WELL
 - FOUND MONUMENT
 - CALCULATED POSITION
 - ⊙ EXISTING WELL

DATE: 03/20/2018
JOB #: NE17302

MULTI-WELL PLAN

D29-20 PAD
(SHEET 3 OF 6)

SECTION: 29
TOWNSHIP: 3N
RANGE: 64W



S.20, T.3N., R.64W.

NOTES:

1. HORIZONTAL DATUM IS NAD 83.
2. VERTICAL DATUM IS NAVD 88.



- BOTTOM HOLE DATA -					- BORE PATH -	
NO.	WELL NAME	FOOTAGES	LATITUDE	LONGITUDE	S-T-R	BEARING, DISTANCE
1	GUTTERSEN D29-786	2565' FSL 209' FWL	N 40.22511°	W 104.58366°	17-3-64	N 04°23'42" W, 10253.30'
2	GUTTERSEN D29-778	2565' FSL 788' FWL	N 40.22511°	W 104.58159°	17-3-64	N 01°22'04" W, 10234.22'
3	GUTTERSEN D29-770	2565' FSL 1401' FWL	N 40.22512°	W 104.57940°	17-3-64	N 01°51'08" E, 10245.35'
4	GUTTERSEN Y05-786	75' FSL 768' FWL	N 40.16030°	W 104.58192°	5-2-64	S 00°13'14" W, 13528.28'
5	GUTTERSEN Y05-779	75' FSL 1326' FWL	N 40.16031°	W 104.57992°	5-2-64	S 01°59'03" E, 13526.69'
6	GUTTERSEN Y05-771	75' FSL 1854' FWL	N 40.16033°	W 104.57803°	5-2-64	S 04°03'34" E, 13543.52'

- LEGEND**
- ⊗ PROPOSED WELL
 - FOUND MONUMENT
 - CALCULATED POSITION
 - ⊙ EXISTING WELL

DATE: 03/20/2018
JOB #: NE17302

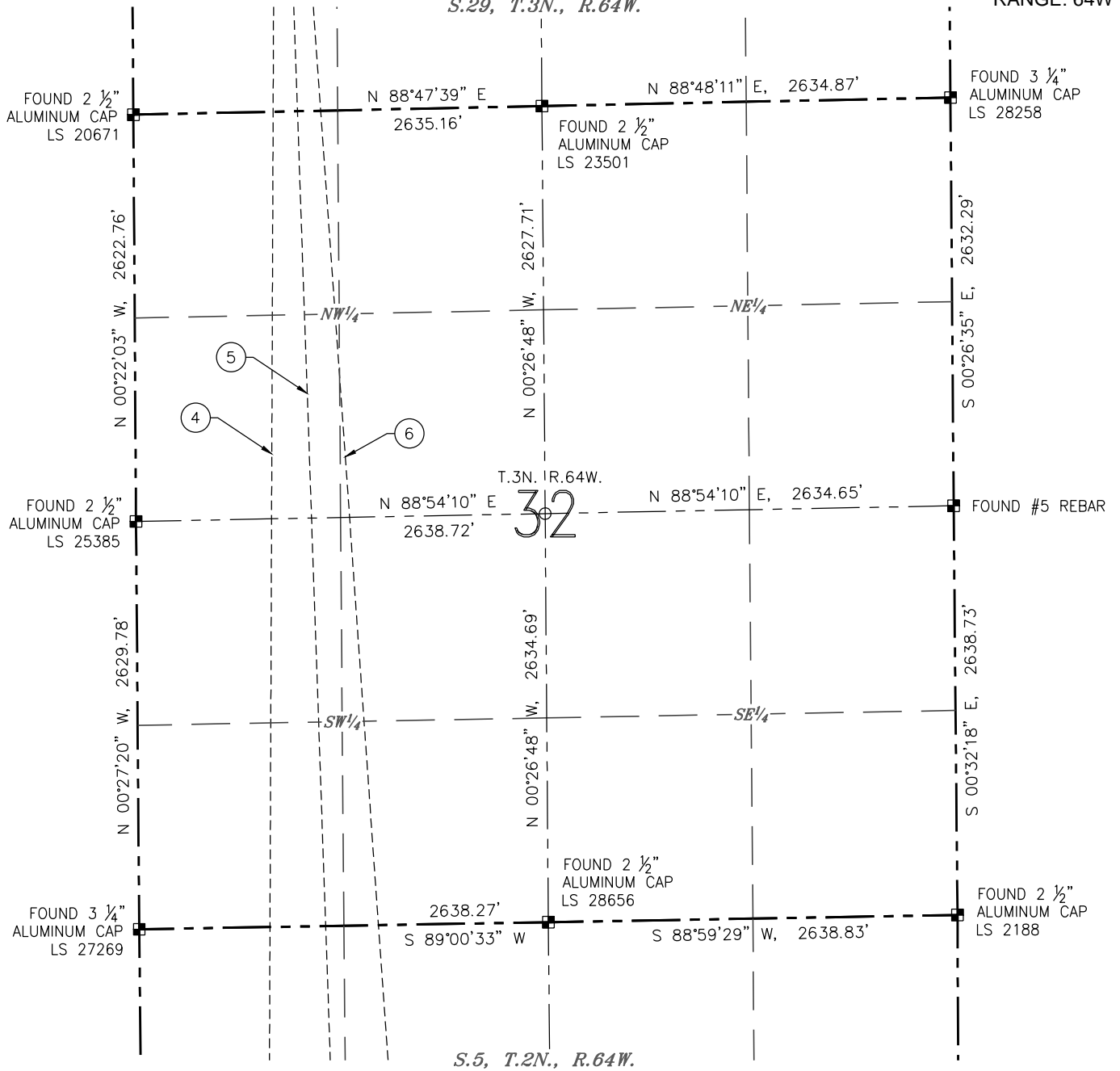
MULTI-WELL PLAN

D29-20 PAD

(SHEET 4 OF 6)

S.29, T.3N., R.64W.

SECTION: 29
TOWNSHIP: 3N
RANGE: 64W



NOTES:

- HORIZONTAL DATUM IS NAD 83.
- VERTICAL DATUM IS NAVD 88.



- BOTTOM HOLE DATA -						- BORE PATH -	
NO.	WELL NAME	FOOTAGES		LATITUDE	LONGITUDE	S-T-R	BEARING, DISTANCE
1	GUTTERSEN D29-786	2565' FSL	209' FWL	N 40.22511°	W 104.58366°	17-3-64	N 04°23'42" W, 10253.30'
2	GUTTERSEN D29-778	2565' FSL	788' FWL	N 40.22511°	W 104.58159°	17-3-64	N 01°22'04" W, 10234.22'
3	GUTTERSEN D29-770	2565' FSL	1401' FWL	N 40.22512°	W 104.57940°	17-3-64	N 01°51'08" E, 10245.35'
4	GUTTERSEN Y05-786	75' FSL	768' FWL	N 40.16030°	W 104.58192°	5-2-64	S 00°13'14" W, 13528.28'
5	GUTTERSEN Y05-779	75' FSL	1326' FWL	N 40.16031°	W 104.57992°	5-2-64	S 01°59'03" E, 13526.69'
6	GUTTERSEN Y05-771	75' FSL	1854' FWL	N 40.16033°	W 104.57803°	5-2-64	S 04°03'34" E, 13543.52'

- LEGEND**
- ⊕ PROPOSED WELL
 - FOUND MONUMENT
 - CALCULATED POSITION
 - ⊗ EXISTING WELL

DATE: 03/20/2018
JOB #: NE17302

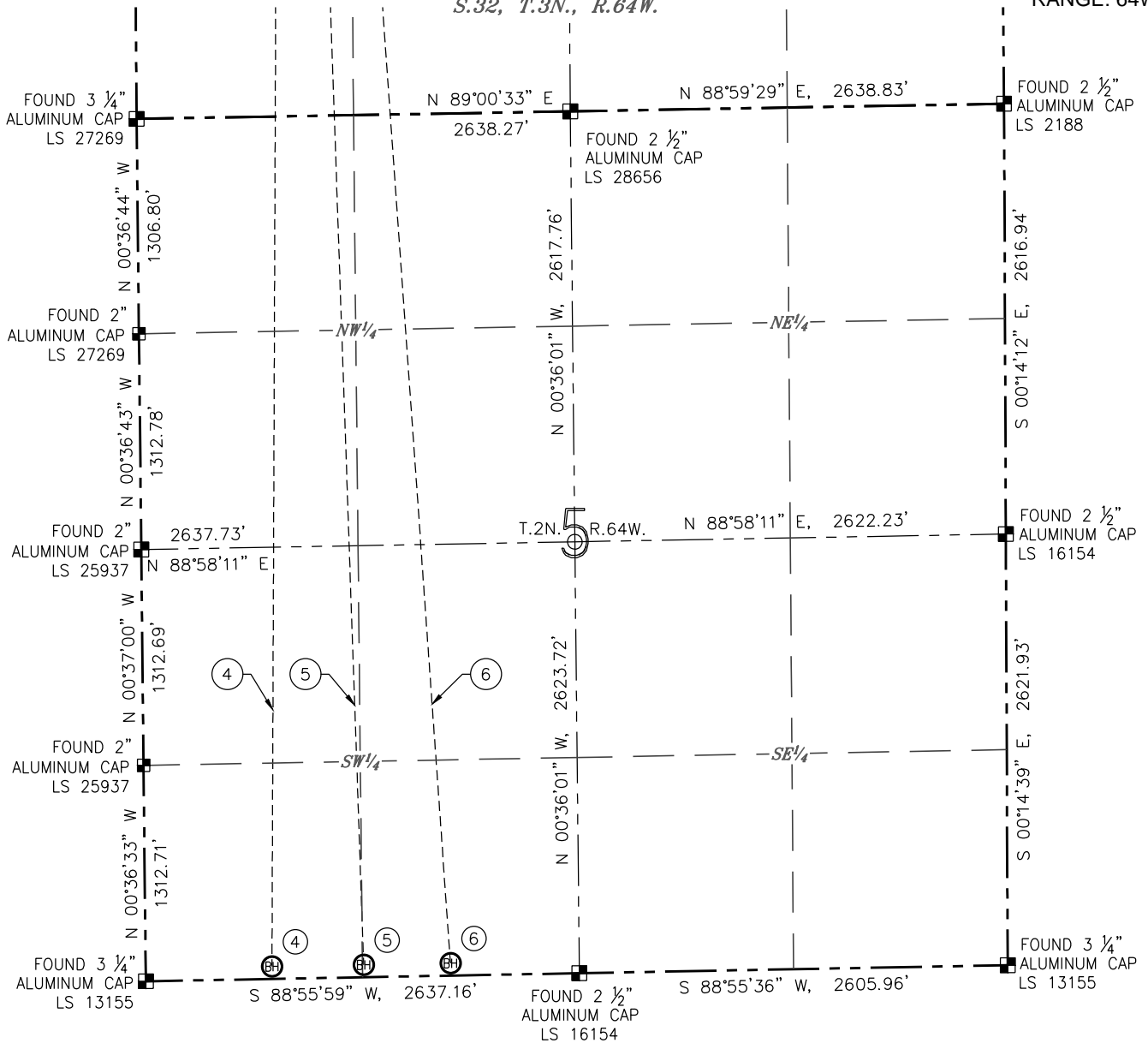
MULTI-WELL PLAN

D29-20 PAD

(SHEET 5 OF 6)

S.32, T.3N., R.64W.

SECTION: 29
TOWNSHIP: 3N
RANGE: 64W



NOTES:

1. HORIZONTAL DATUM IS NAD 83.
2. VERTICAL DATUM IS NAVD 88.



- BOTTOM HOLE DATA -						- BORE PATH -	
NO.	WELL NAME	FOOTAGES		LATITUDE	LONGITUDE	S-T-R	BEARING, DISTANCE
1	GUTTERSEN D29-786	2565' FSL	209' FWL	N 40.22511°	W 104.58366°	17-3-64	N 04°23'42" W, 10253.30'
2	GUTTERSEN D29-778	2565' FSL	788' FWL	N 40.22511°	W 104.58159°	17-3-64	N 01°22'04" W, 10234.22'
3	GUTTERSEN D29-770	2565' FSL	1401' FWL	N 40.22512°	W 104.57940°	17-3-64	N 01°51'08" E, 10245.35'
4	GUTTERSEN Y05-786	75' FSL	768' FWL	N 40.16030°	W 104.58192°	5-2-64	S 00°13'14" W, 13528.28'
5	GUTTERSEN Y05-779	75' FSL	1326' FWL	N 40.16031°	W 104.57992°	5-2-64	S 01°59'03" E, 13526.69'
6	GUTTERSEN Y05-771	75' FSL	1854' FWL	N 40.16033°	W 104.57803°	5-2-64	S 04°03'34" E, 13543.52'

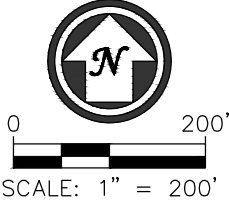
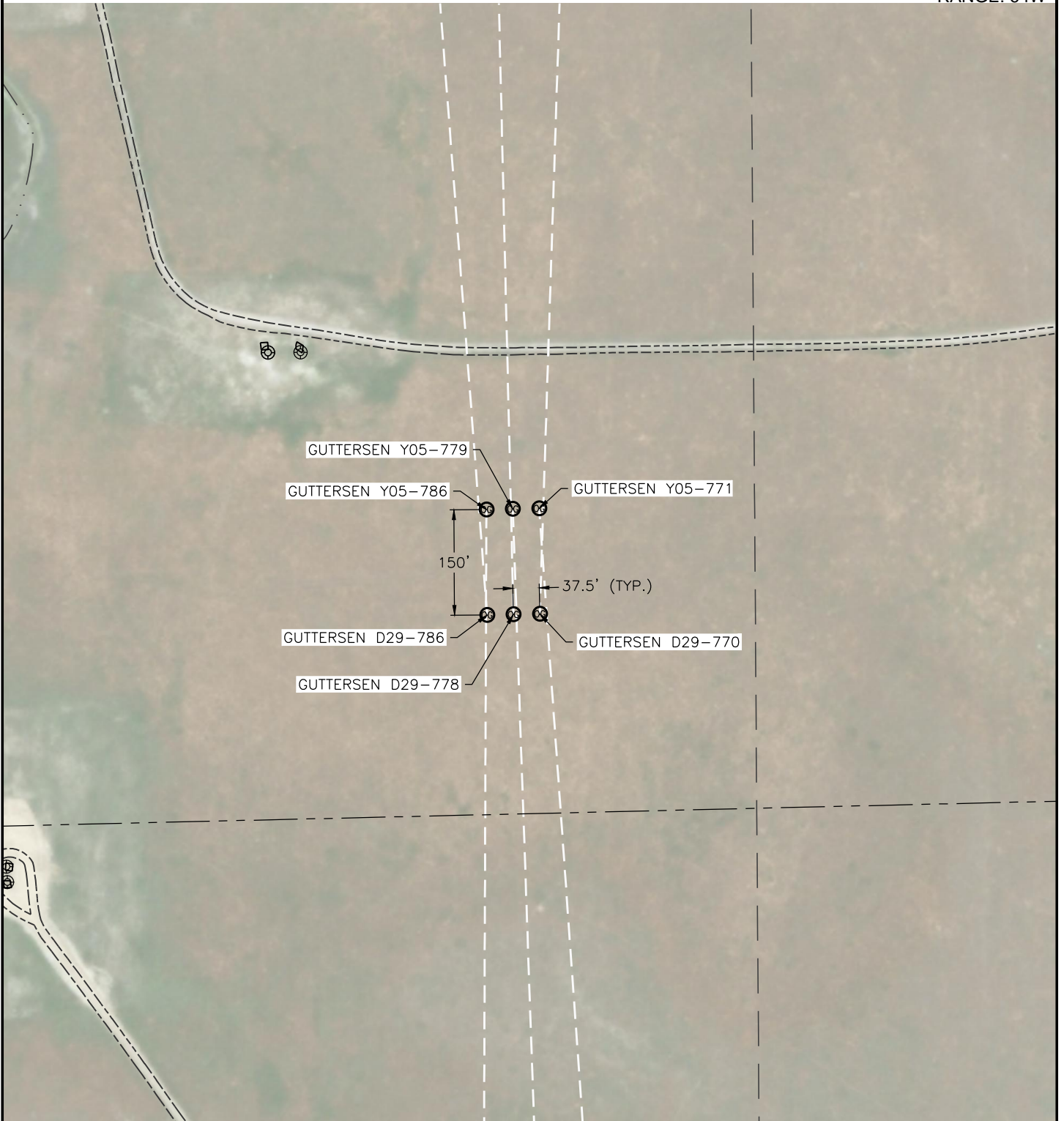
- LEGEND**
- ⊗ PROPOSED WELL
 - FOUND MONUMENT
 - CALCULATED POSITION
 - ⊙ EXISTING WELL

DATE: 03/20/2018
JOB #: NE17302

MULTI-WELL PLAN

D29-20 PAD
(SHEET 6 OF 6)

SECTION: 29
TOWNSHIP: 3N
RANGE: 64W



LEGEND	
	PROPOSED WELL
	EXISTING WELL

DATE: 03/20/2018
JOB #: NE17302