

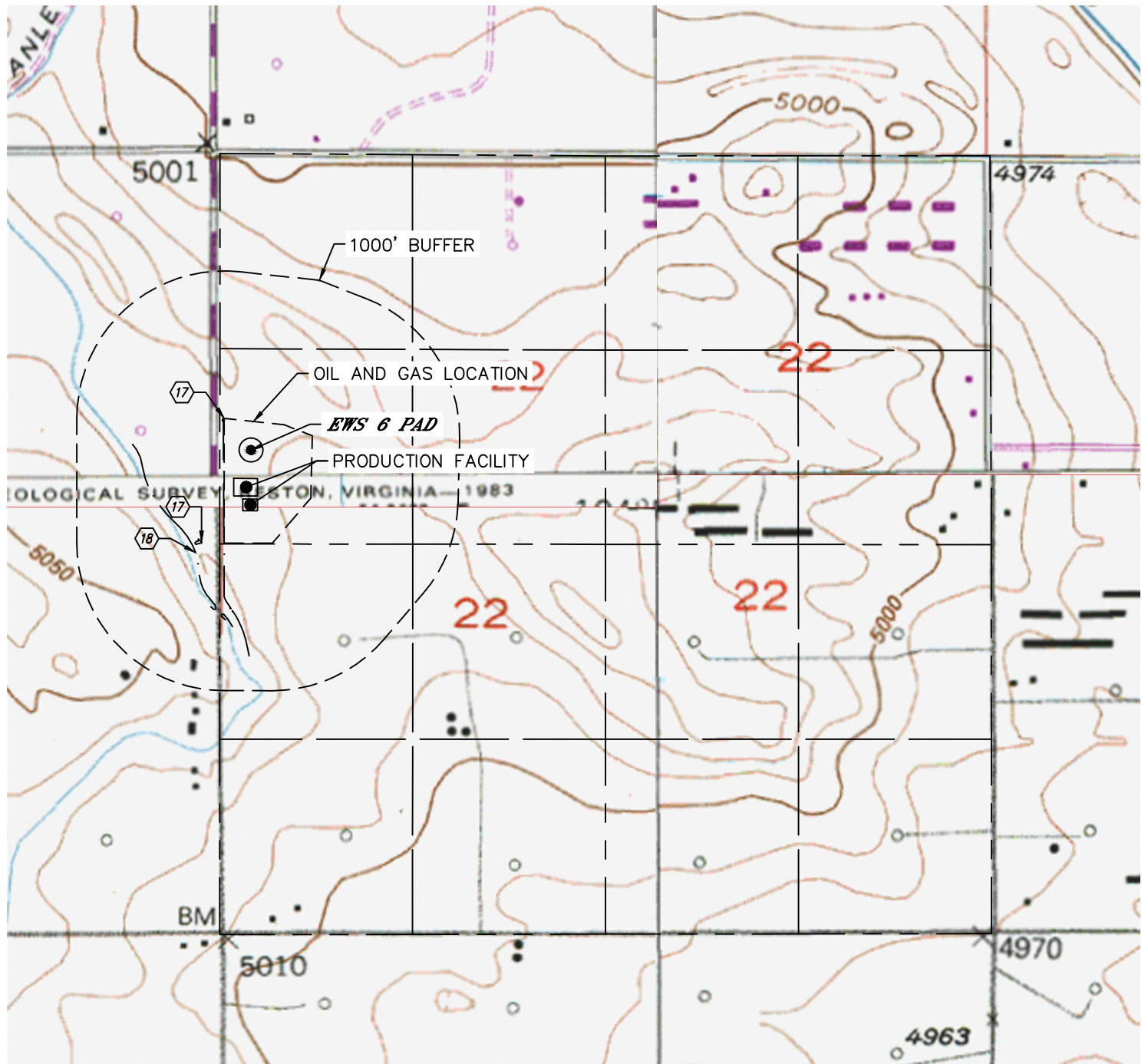


Lat40°, Inc. 6250 W. 10th Street, Unit 2, Greeley, CO 970-515-5294



# HYDROLOGY MAP

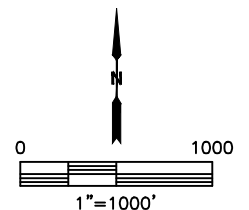
**EWS 6 PAD**

SECTION: 22  
TOWNSHIP: 2N  
RANGE: 67W  
6TH. P.M.  
WELD COUNTY, CO



DISTANCES MEASURED FROM THE EDGE OF THE OIL AND GAS LOCATION.

-  DITCH 0' & 153' W
-  STANLEY DITCH 204' SW



DATE: 5/4/2018  
PROJECT#: 2018073