



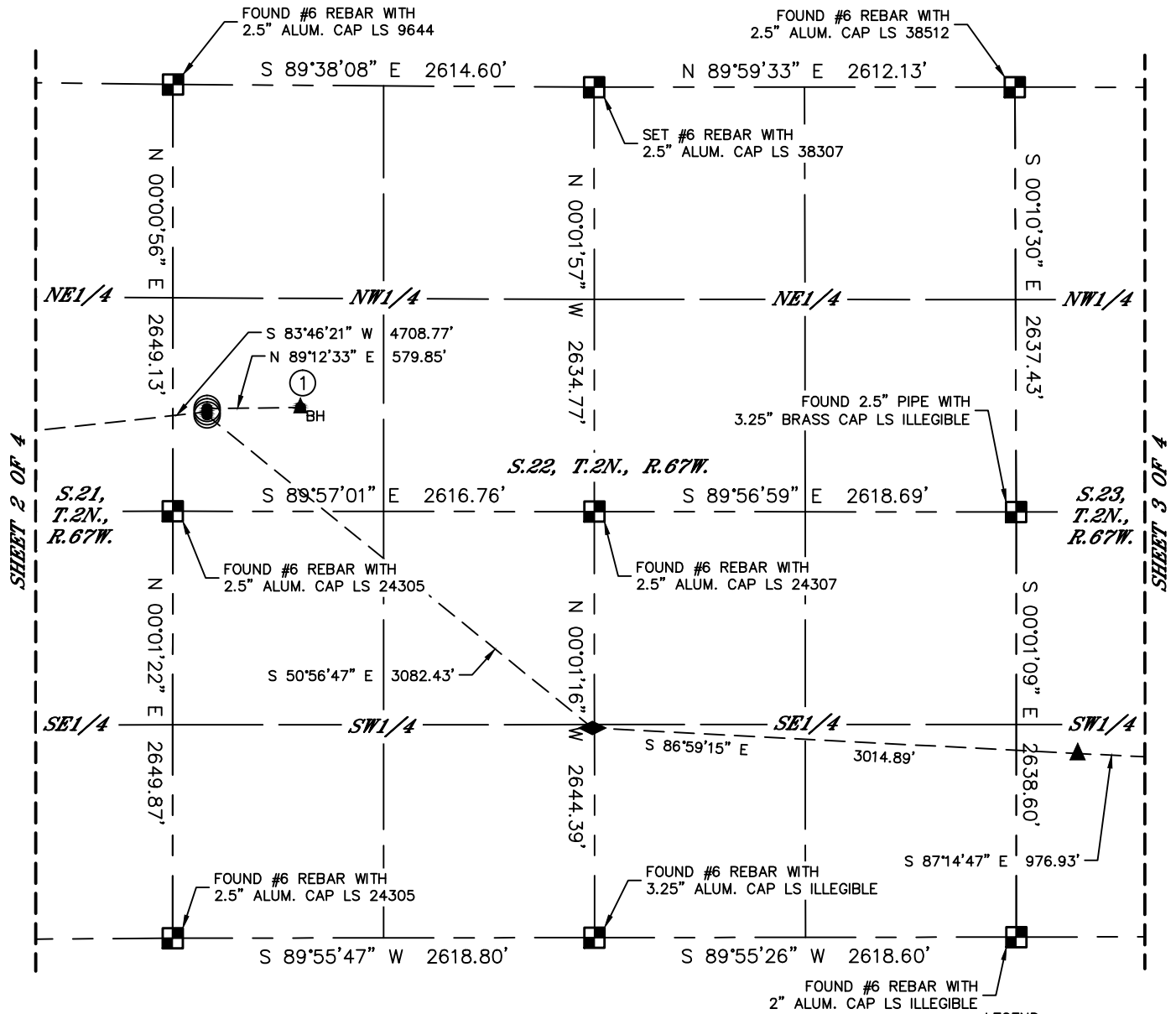
Lat40°, Inc. 6250 W. 10th Street, Unit 2, Greeley, CO 970-515-5294

MULTI-WELL PLAN

EWS 6 PAD

THIS MAP DOES NOT REPRESENT A BOUNDARY SURVEY

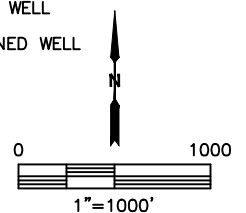
SECTION: 22
TOWNSHIP: 2N
RANGE: 67W
6TH. P.M.
WELD COUNTY, CO



LEGEND

- = ALIQUOT MONUMENT AS DESCRIBED
- = CALCULATED POSITION
- = SURFACE HOLE LOCATION (SHL)
- = ANGLE POINT (AP)
- = TOP OF INJECTION ZONE (TIZ)
- = BOTTOM HOLE LOCATION (BHL)
- = EXISTING WELL
- = ABANDONED WELL

#	WELL NAME	BHL FOOTAGE				BHL LAT °	BHL LONG °	BHL S-T-R
1	EWS 6	2000	FNL	791	FWL	40.12552	-104.88330	22-2-67
2	EWS 6A	2629	FNL	148	FWL	40.12395	-104.90455	21-2-67
3	EWS 6B	1089	FSL	1356	FWL	40.11938	-104.86262	23-2-67





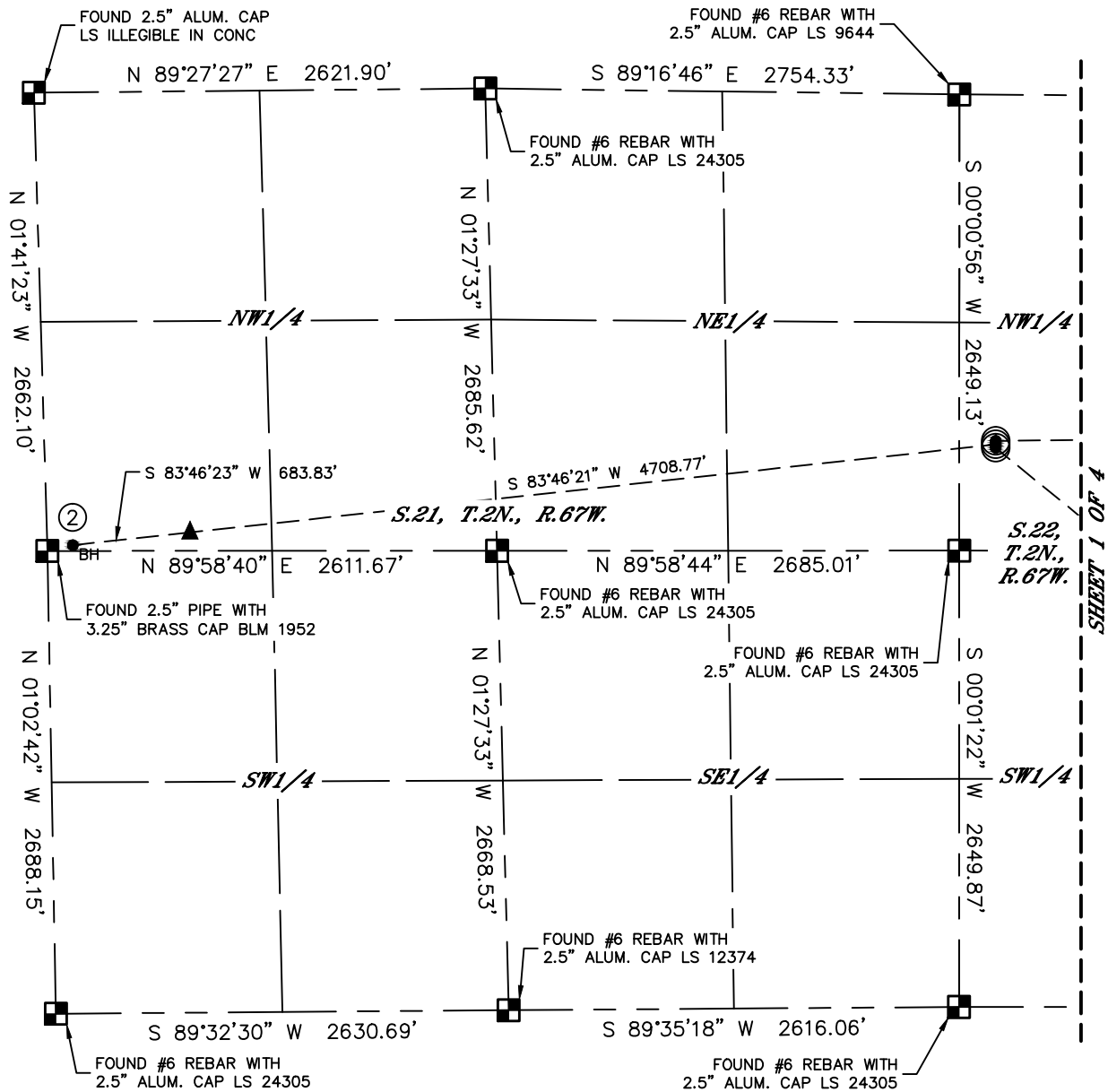
Lat40°, Inc. 6250 W. 10th Street, Unit 2, Greeley, CO 970-515-5294

MULTI-WELL PLAN

EWS 6 PAD

THIS MAP DOES NOT REPRESENT A BOUNDARY SURVEY

SECTION: 22
TOWNSHIP: 2N
RANGE: 67W
6TH. P.M.
WELD COUNTY, CO

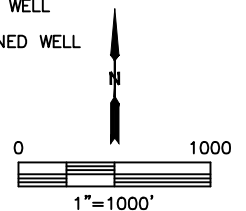


SHEET 1 OF 4

LEGEND

- = ALIQUOT MONUMENT AS DESCRIBED
- = CALCULATED POSITION
- ⊙ = SURFACE HOLE LOCATION (SHL)
- ◆ = ANGLE POINT (AP)
- ▲ = TOP OF INJECTION ZONE (TIZ)
- = BOTTOM HOLE LOCATION (BHL)
- ⊙ = EXISTING WELL
- ⊗ = ABANDONED WELL

#	WELL NAME	BHL FOOTAGE				BHL LAT °	BHL LONG °	BHL S-T-R
1	EWS 6	2000	FNL	791	FWL	40.12552	-104.88330	22-2-67
2	EWS 6A	2629	FNL	148	FWL	40.12395	-104.90455	21-2-67
3	EWS 6B	1089	FSL	1356	FWL	40.11938	-104.86262	23-2-67



SHEET 2 OF 4

DATE: 5/15/2018
PROJECT#: 2018073



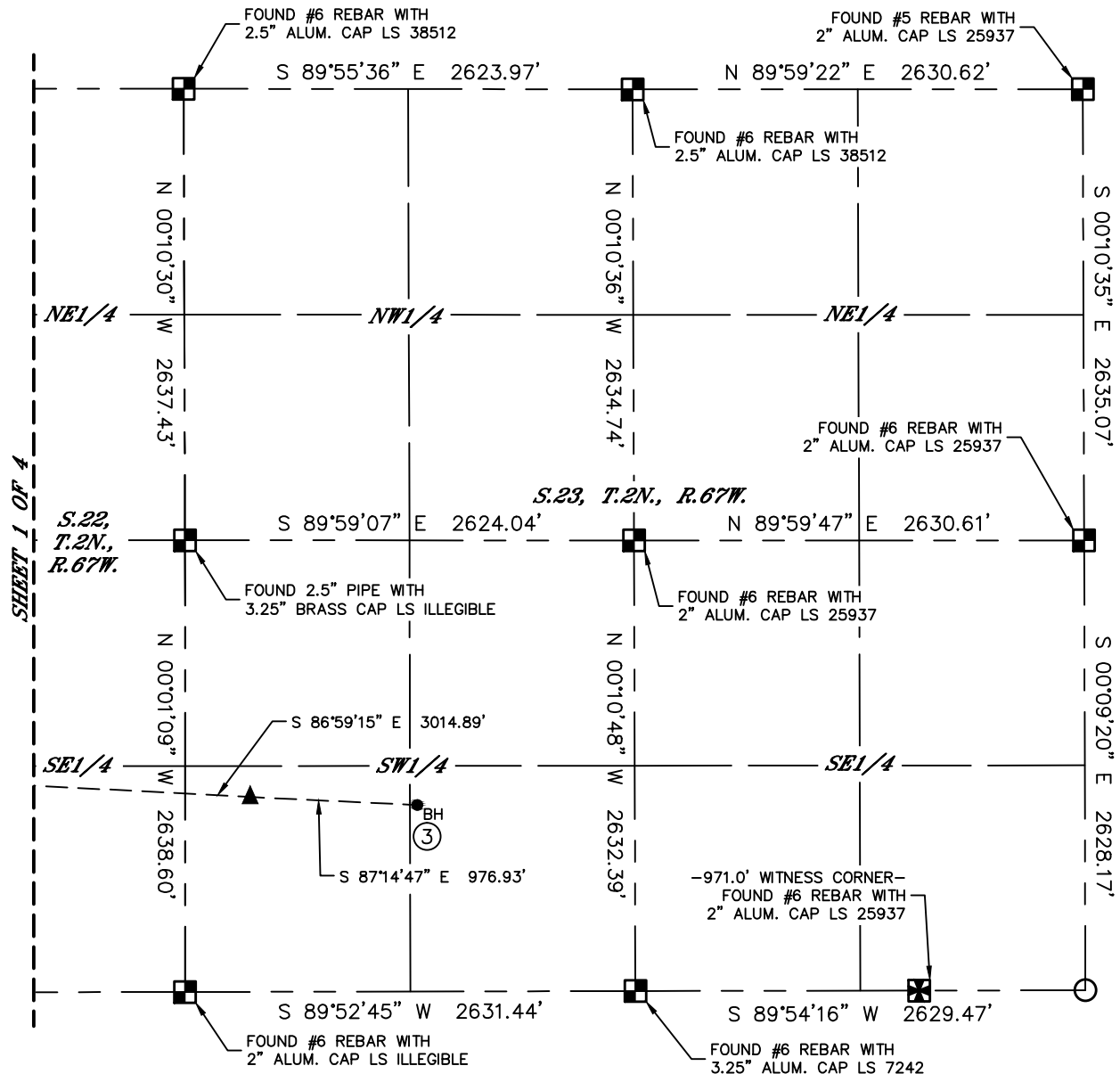
Lat40°, Inc. 6250 W. 10th Street, Unit 2, Greeley, CO 970-515-5294

MULTI-WELL PLAN

EWS 6 PAD

THIS MAP DOES NOT REPRESENT A BOUNDARY SURVEY

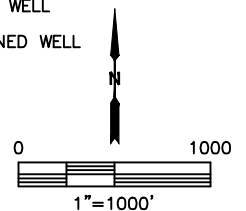
SECTION: 22
TOWNSHIP: 2N
RANGE: 67W
6TH. P.M.
WELD COUNTY, CO



LEGEND

- = ALIQUOT MONUMENT AS DESCRIBED
- = CALCULATED POSITION
- = SURFACE HOLE LOCATION (SHL)
- = ANGLE POINT (AP)
- = TOP OF INJECTION ZONE (TIZ)
- = BOTTOM HOLE LOCATION (BHL)
- = EXISTING WELL
- = ABANDONED WELL

#	WELL NAME	BHL FOOTAGE				BHL LAT °	BHL LONG °	BHL S-T-R
1	EWS 6	2000	FNL	791	FWL	40.12552	-104.88330	22-2-67
2	EWS 6A	2629	FNL	148	FWL	40.12395	-104.90455	21-2-67
3	EWS 6B	1089	FSL	1356	FWL	40.11938	-104.86262	23-2-67



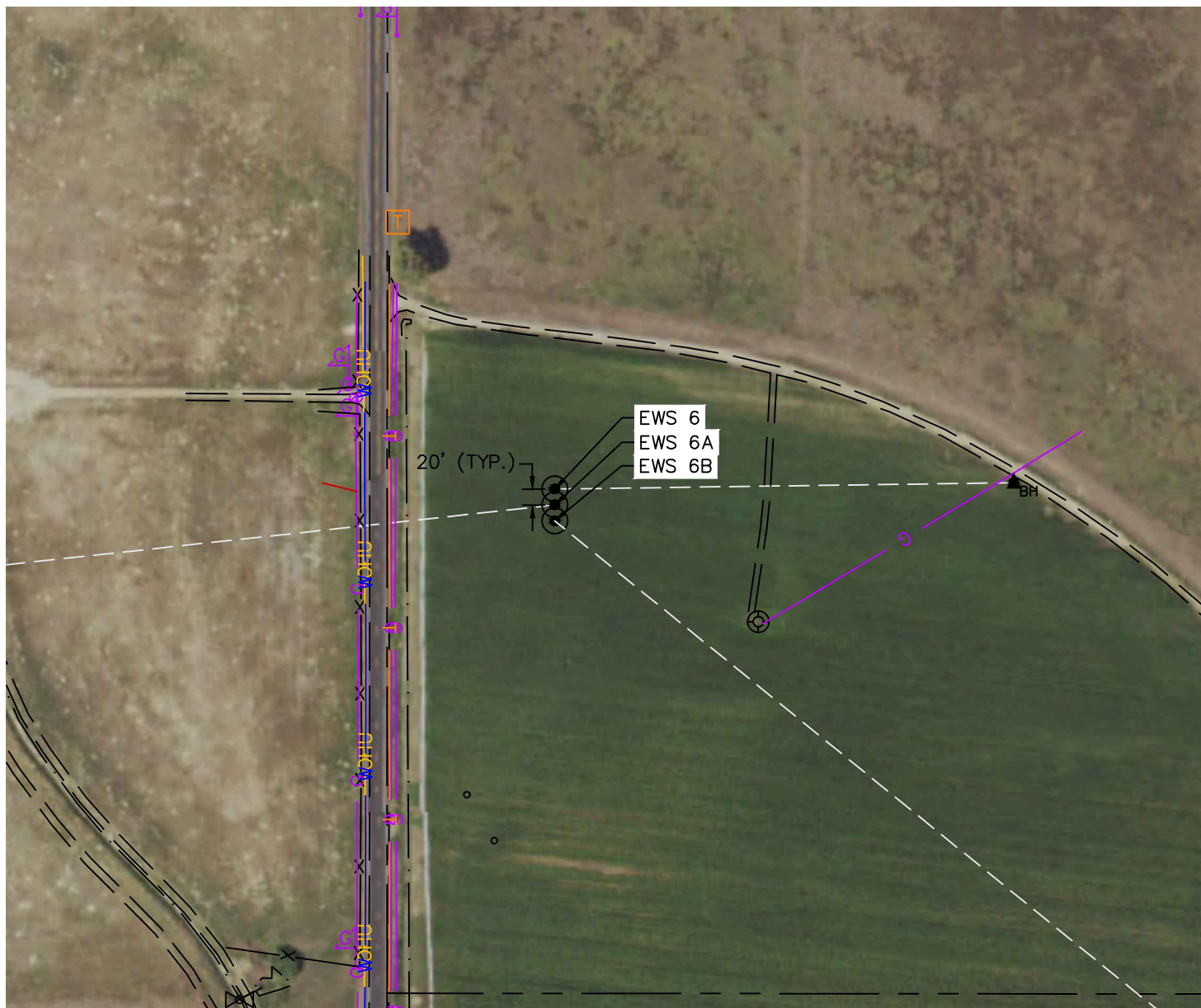


Lat40°, Inc. 6250 W. 10th Street, Unit 2, Greeley, CO 970-515-5294

MULTI-WELL PLAN

EWS 6 PAD

SECTION: 22
TOWNSHIP: 2N
RANGE: 67W
6TH. P.M.
WELD COUNTY, CO



#	WELL NAME	SHL FOOTAGE				SHL LAT°	SHL LONG°	SHL PDOP	SHL ELEV (FT.)	SHL 1/4/1/4	SHL S-T-R
1	EWS 6	2011	FNL	211	FWL	40.12551	-104.88537	2.3	5022	SWNW	22-2-67
2	EWS 6A	2031	FNL	211	FWL	40.12545	-104.88537	2.2	5022	SWNW	22-2-67
3	EWS 6B	2051	FNL	212	FWL	40.12540	-104.88537	2.2	5022	SWNW	22-2-67

