



Lat40°, Inc. 6250 W. 10th Street, Unit 2, Greeley, CO 970-515-5294

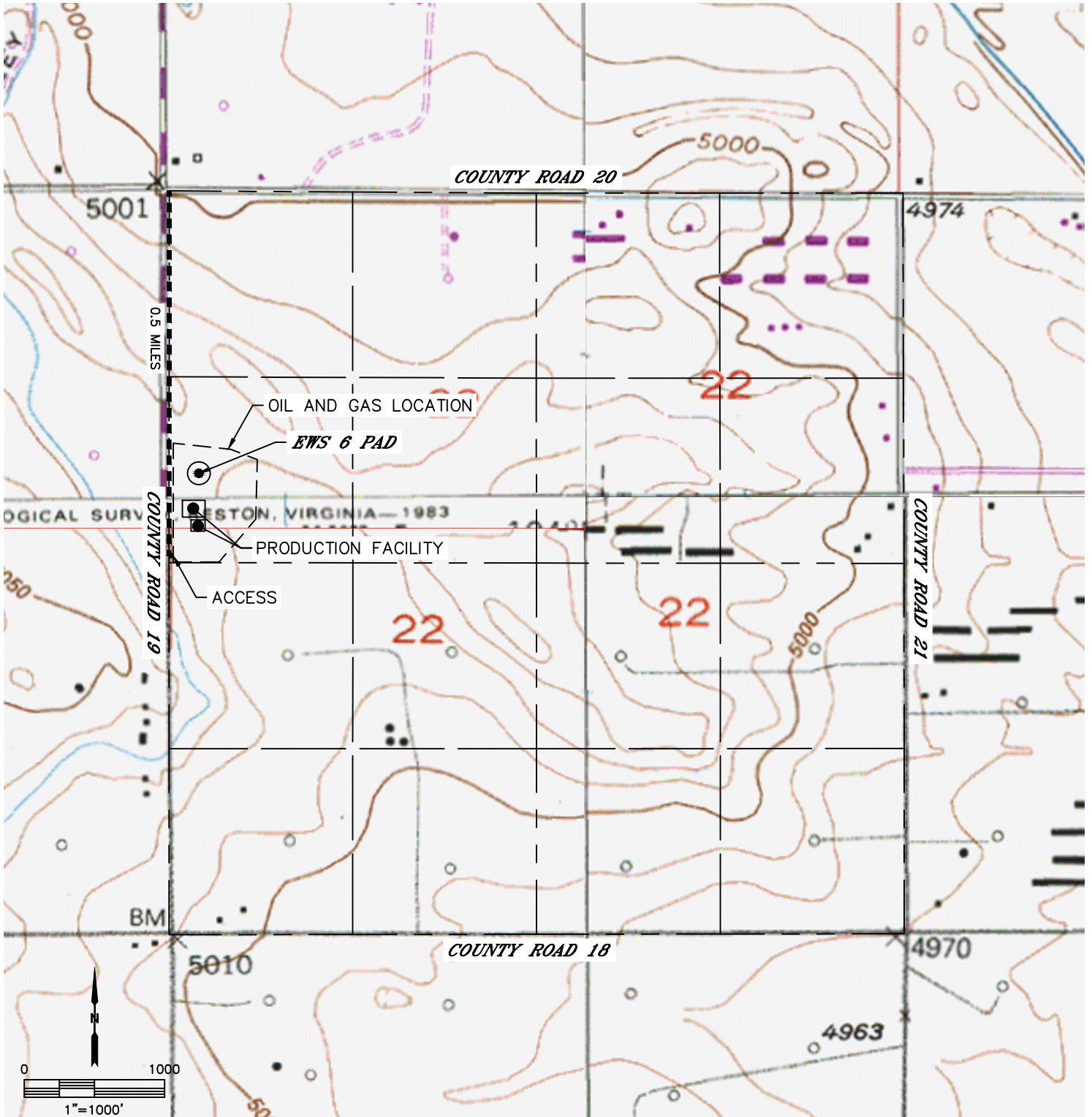
ACCESS ROAD MAP

EWS 6 PAD

SECTION: 22
TOWNSHIP: 2N
RANGE: 67W
6TH. P.M.
WELD COUNTY, CO

DRIVING DIRECTIONS TO EWS 6 PAD

FROM THE INTERSECTION OF COUNTY ROAD 19 AND COUNTY ROAD 20, GO SOUTH ON COUNTY ROAD 19 FOR 0.5 MILES TO A PROPOSED ACCESS TO THE EAST. GO EAST ON PROPOSED ACCESS TO THE PROPOSED PRODUCTION FACILITY AND DRILL PAD.





Lat40°, Inc. 6250 W. 10th Street, Unit 2, Greeley, CO 970-515-5294

ACCESS ROAD MAP

EWS 6 PAD

SECTION: 22
TOWNSHIP: 2N
RANGE: 67W
6TH. P.M.
WELD COUNTY, CO

