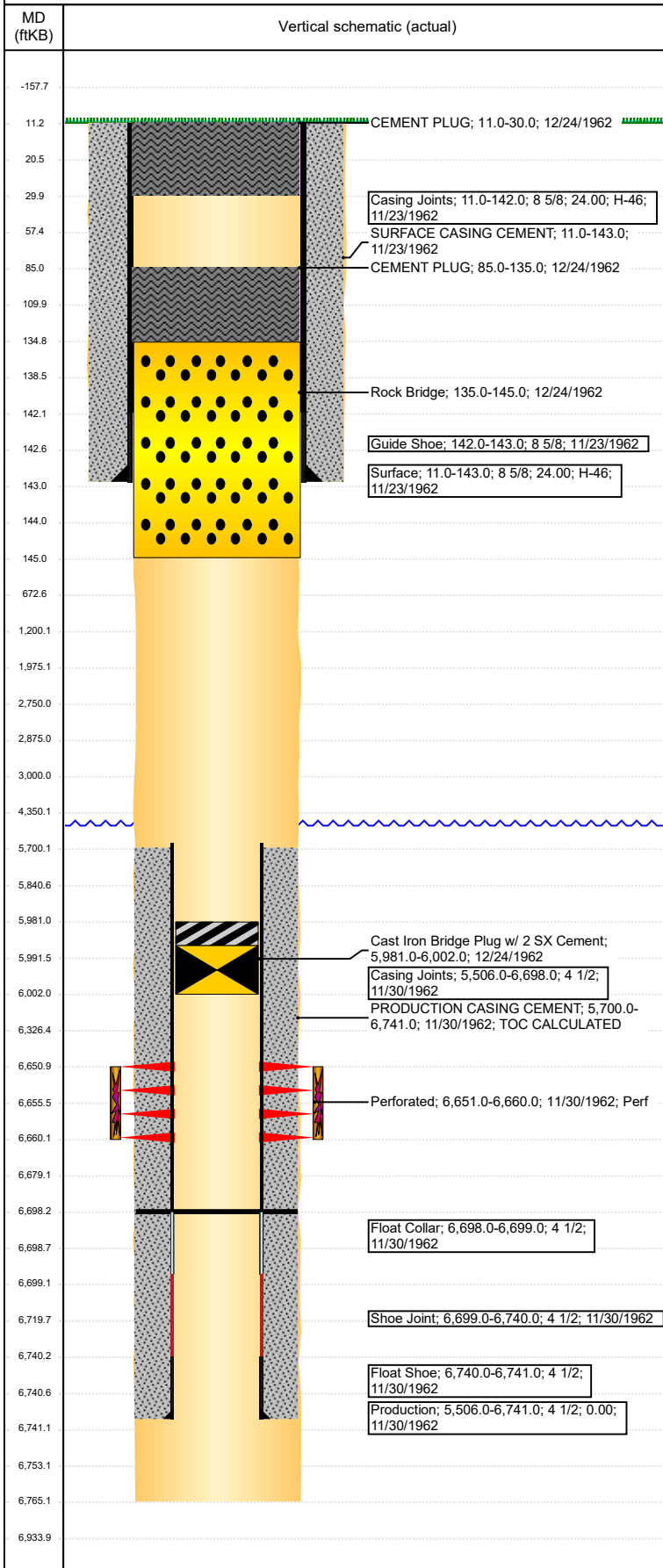


Well Name: STATE 01

VERTICAL - ORIGINAL HOLE, 5/31/2018 10:27:22 AM



Well Header							
API 05-123-06149		Well Report Center			Well Configuration Type VERTICAL		
Original KB Elevation (ft) 4,857		KB - GL / MSL (ftKB) 11.00		Spud Date 11/23/1962		P & A Date 12/12/1962	
Production Route Watt - A1-01			Well Production Status PA			SoRT Ignore Yes	
Directions To Well				Actual Latitude (°) 40.65648500		Actual Longitude (°) -103.97945900	
Comment ASSUMED 12 1/4" SURFACE HOLE, 7 7/8" PROD HOLE. 4.5" PROD CASING IS BOTH 10.5# & 11.6# STRING SHOT CASING @ 5506' DURING P&A							
Congressional Location							
Quarter 3	Quarter 4	Section	Township 5	Twnshp N/S Dir N	Range 66	Range E/W Dir W	
Rig Operator							
Rig Operator							
Plug Back Total Depths							
Date	Depth (ftKB)	Method			Com		
11/30/1962	6,698.0	CASING TALLY			STATE REPORTED PBTD		
Wellbore Sections							
Section Des		Size (in)		Act Top, MD (ftKB)		Act Btm, MD (ftKB)	
SURFACE		12 1/4		11		143	
PRODUCTION		7 7/8		143		6,765	
Zone Statuses							
Zone Name		Status Date			Status		
D SAND		12/24/1962			P&A		
Casing Strings							
Surface, 143.0ftKB							
Casing Description	Run Date	OD (in)	Wt/Len (l...	Grade	Top, MD (ft...	MD (ftKB)	
Surface	11/23/1962	8 5/8	24.00	H-46	11.0	143.0	
Production, 6,741.0ftKB							
Casing Description	Run Date	OD (in)	Wt/Len (l...	Grade	Top, MD (ft...	MD (ftKB)	
Production	11/30/1962	4 1/2			11.0	6,741.0	
Cement							
Des			Start Date		Top (ftKB)		Btm (ftKB)
SURFACE CASING CEMENT			11/23/1962		11.0		143.0
PRODUCTION CASING CEMENT			11/30/1962		5,700.0		6,741.0
CEMENT PLUG			12/24/1962		85.0		135.0
CEMENT PLUG			12/24/1962		11.0		30.0
Proposed Cement							
Des					Top (ftKB)		Btm (ftKB)
CEMENT PLUG					2,750.0		3,000.0
SHOE PLUG					11.0		1,200.0
Tubing Strings							
Tubing Description	Run Date	String...	ID (in)	Wt (lb/ft)	Grade	Len (ft)	Set De...
Other In Hole							
Run Date	Des			OD (in)	Top (ftKB)	Btm (ftKB)	
12/24/1962	Cast Iron Bridge Plug w/ 2 SX Cement			3.99	5,981.0	6,002.0	
12/24/1962	Rock Bridge			8.09	135.0	145.0	
Proposed Other In Hole							
Des			OD (in)	Top (ftKB)		Btm (ftKB)	
Logs							
Date	Type				Top, MD (ftKB)	Btm, MD (ftKB)	
Perforation Data							
Linked Zone	Sum of Entered Shot Total	Top (ftKB)		Btm (ftKB)		Date	
D SAND, ORIGINAL HOLE	0	6,651.00		6,660.00		11/30/1962	
Total (Sum)	0						
Job Supply Amounts							
Supply Item Des	Type	Uni...	Job Category			Total...	Total...