



May 21, 2018

VIA ELECTRONIC TRANSMITTAL

Department of Natural Resources
Oil and Gas Conservation Commission
The Chancery Building
Attn: Julie Murphy
1120 Lincoln St., Suite 801
Denver, CO 80203

Re: **30-Day Certification Letter – Rule 318A.e**

JOHNSON 01N-65W-30-1S located 230' FSL & 1655' FWL (SHL) Weld County
JOHNSON 01N-65W-30-2S located 230' FSL & 1675' FWL (SHL) Weld County

Dear COGCC Director,

Verdad Resources LLC (Verdad) hereby certifies to the Director that a thirty (30-day) notice has been given by certified mail to all owners in the proposed 720-acre wellbore spacing unit comprised of the following: SW4 SW4 of Section 18 and the W2 W2 of Sections 19 & 30 in T1N-R65W, and the SE4 SE4 of Section 13 and the E2 E2 of Sections 24 and 25 of T1N-R66W.

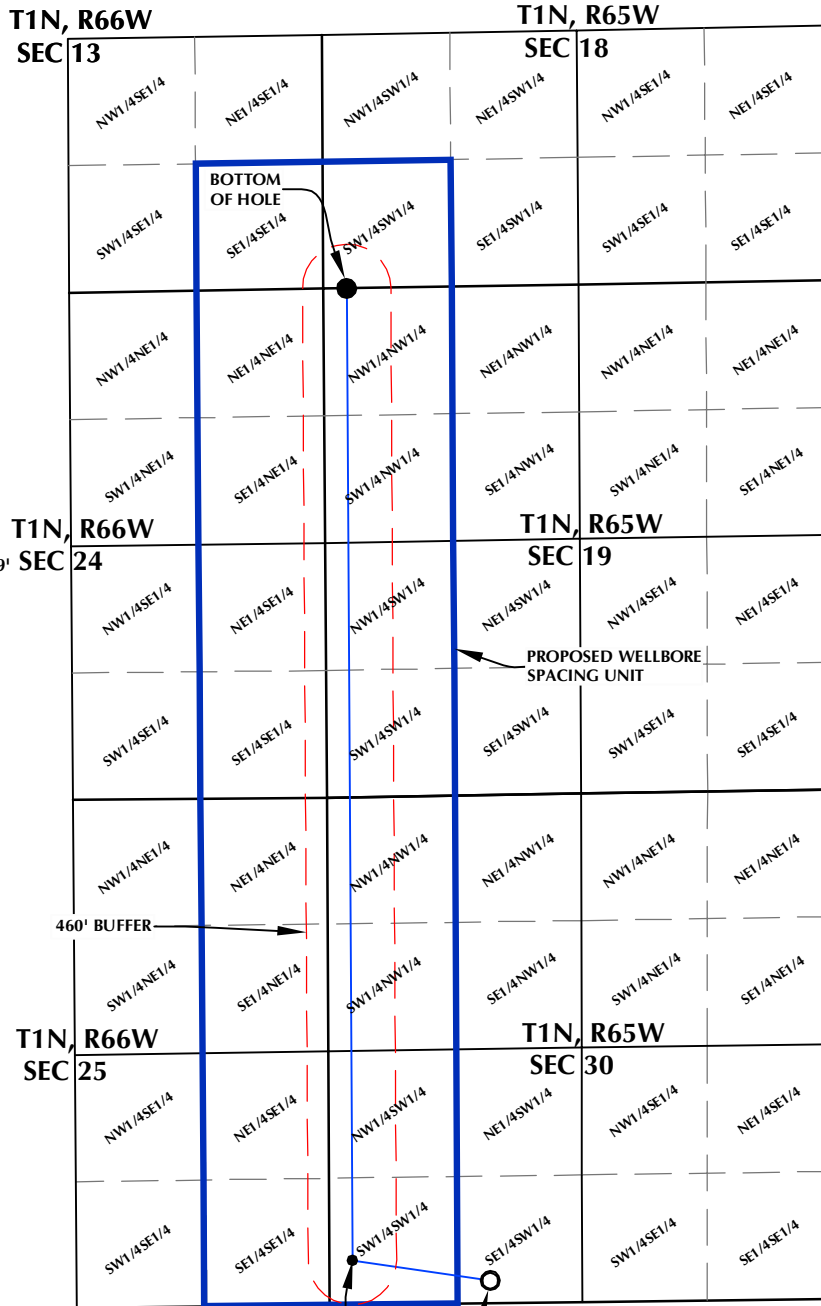
We have not received any objections to such well location or proposed spacing unit, therefore Verdad hereby requests the Director to approve the proposed wells.

If you should have any questions or concerns regarding this permit, please contact the undersigned at 214-838-2775.

Sincerely,

Rick Rowe
Land Manager
Verdad Oil and Gas Corporation

JOHNSON 01N-65W-30-2S WELLBORE SPACING UNIT



SURFACE LOCATION
GROUND ELEVATION= 4999.9'
LATITUDE= 40.015684°
LONGITUDE= -104.710169°
1/4 1/4: SE1/4 SW1/4

LANDING POINT
LATITUDE= 40.016300°
LONGITUDE= -104.715288°
1/4 1/4: SW1/4 SW1/4

BOTTOM HOLE LOCATION
LATITUDE= 40.044096°
LONGITUDE= -104.715187°
1/4 1/4: NW1/4 NW1/4

460' BUFFER

PROPOSED WELLBORE
SPACING UNIT

LANDING POINT

JOHNSON 01N-65W-30-2S
SURFACE LOCATION

NOTES:

1. DRAWING LATITUDE AND LONGITUDE COORDINATES ARE NAD 83 (2011)(EPOCH:2010)
2. ELEVATION BASED ON NAVD88 (GEOID12B)
3. BASIS OF BEARING DERIVED FROM COLORADO COORDINATE SYSTEM OF 1983 NORTH ZONE.
4. ALL MEASURED DISTANCES ARE GRID.
COMBINED SCALE FACTOR: .99972845 CALCULATED FROM THE W. 1/4 CORNER OF SECTION 30, T1N, R65W



0 2000'
SCALE: 1" = 2000'

WELL PAD - JOHNSON 01N-65W-30

JOHNSON 01N-65W-30-2S
WELLBORE SPACING UNIT
230' FSL & 1675' FWL (SESW) (SURFACE)
460' FSL & 240' FWL LOT 2 (SWSW) (LANDING POINT)
LOCATED IN SECTION 30
1' FNL & 240' FWL LOT 1 (NWNW) (BOTTOM)
LOCATED IN SECTION 19
T1N, R65W, 6TH P.M.
WELD COUNTY, COLORADO



5950 Cedar Springs Road, Suite 200
Dallas, Texas 75235



CONSULTING, LLC

SHERIDAN OFFICE
1095 Saberton Avenue
Sheridan, Wyoming 82801
Phone 307-674-0609

LOVELAND OFFICE
1635 Foxtrail Drive, Suite 204
Loveland, Colorado 80538
Phone 970-776-4331

DRAFTED BY:	GLK	CHECKED BY:	RKF
DATE DRAFTED:	1/30/18	DATE SURVEYED:	1/17/18
REVISED:		FILE NAME:	17-171