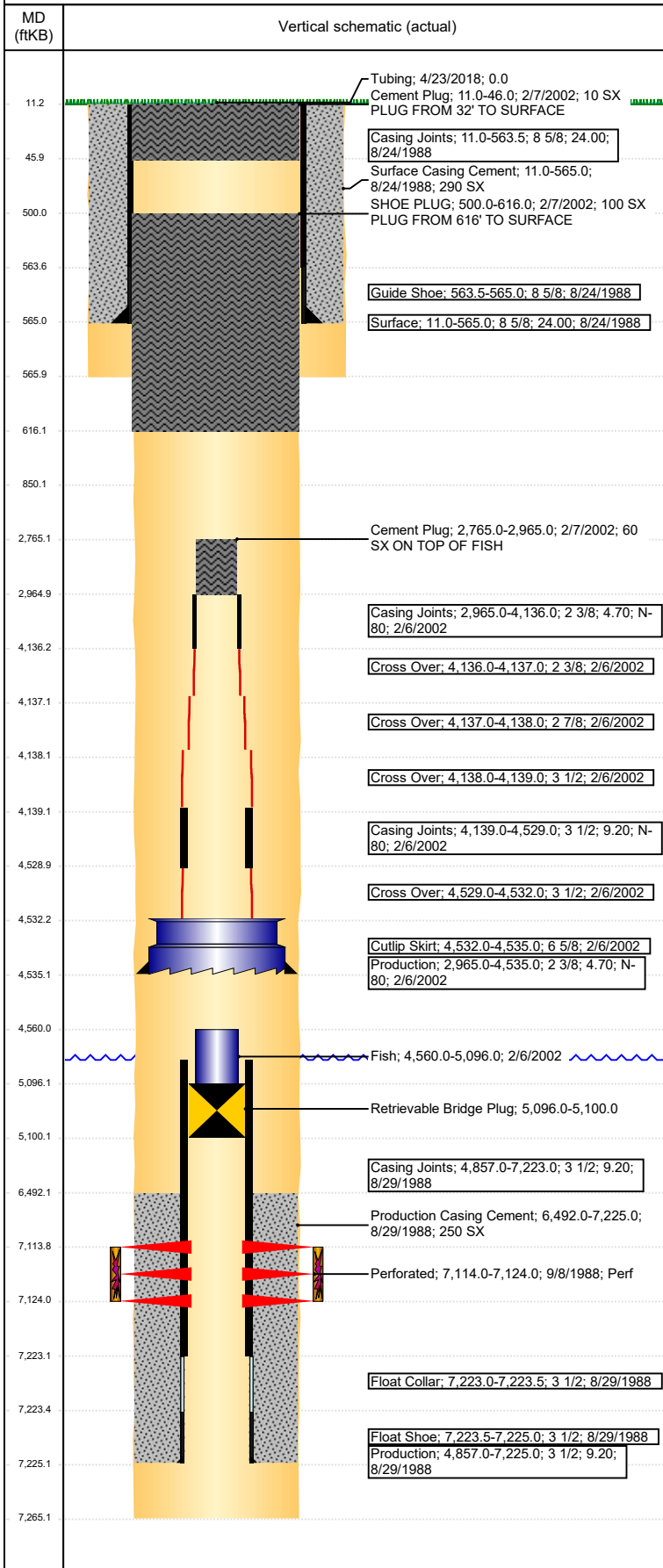


Well Name: EACHUS UPRR 42-23

VERTICAL - ORIGINAL HOLE, 5/31/2018 10:15:00 AM

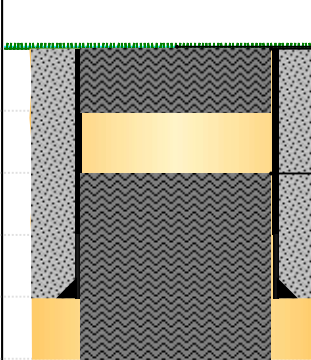
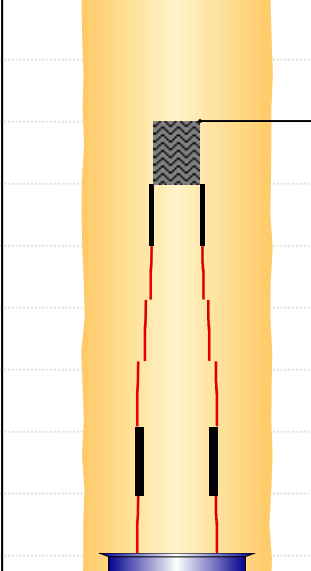
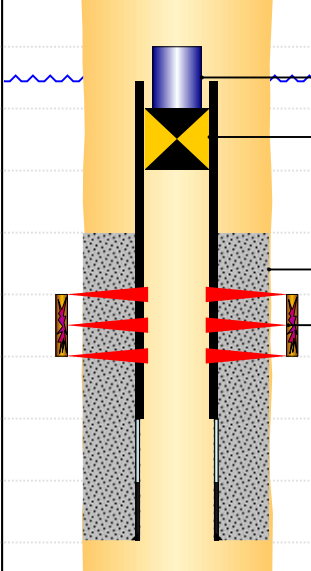


Well Header							
API 05-123-14036		Well Report Center			Well Configuration Type VERTICAL		
Original KB Elevation (ft) 4,860		KB - GL / MSL (ftKB) 11.00		Spud Date 8/24/1988		P & A Date 2/7/2002	
Production Route			Well Production Status PA				SoRT Ignore Yes
Directions To Well				Actual Latitude (°) 40.21224700		Actual Longitude (°) -104.62344500	
Comment							
Congressional Location							
Quarter 3	Quarter 4	Section	Township 5	Twnshp N/S Dir N	Range 66	Range E/W Dir W	
Rig Operator							
Rig Operator							
Plug Back Total Depths							
Date	Depth (ftKB)	Method			Com		
Wellbore Sections							
Section Des		Size (in)		Act Top, MD (ftKB)		Act Btm, MD (ftKB)	
SURFACE		12 1/4		11		566	
PRODUCTION		7 7/8		566		7,265	
Zone Statuses							
Zone Name		Status Date			Status		
CODELL		2/7/2002			P&A		
Casing Strings							
Surface, 565.0ftKB							
Casing Description	Run Date	OD (in)	Wt/Len (l...	Grade	Top, MD (ft...	MD (ftKB)	
Surface	8/24/1988	8 5/8	24.00		11.0	565.0	
Production, 4,535.0ftKB							
Casing Description	Run Date	OD (in)	Wt/Len (l...	Grade	Top, MD (ft...	MD (ftKB)	
Production	2/6/2002	2 3/8	4.70	N-80	2,965.0	4,535.0	
Production, 7,225.0ftKB							
Casing Description	Run Date	OD (in)	Wt/Len (l...	Grade	Top, MD (ft...	MD (ftKB)	
Production	8/29/1988	3 1/2	9.20		11.0	7,225.0	
Cement							
Des		Start Date		Top (ftKB)		Btm (ftKB)	
Surface Casing Cement		8/24/1988		11.0		565.0	
Production Casing Cement		8/29/1988		6,492.0		7,225.0	
Cement Plug		2/7/2002		2,765.0		2,965.0	
SHOE PLUG		2/7/2002		500.0		616.0	
Cement Plug		2/7/2002		11.0		46.0	
Proposed Cement							
Des				Top (ftKB)		Btm (ftKB)	
CEMENT PLUG				11.0		565.0	
CEMENT PLUG				565.0		850.0	
Tubing Strings							
Tubing Description	Run Date	String...	ID (in)	Wt (lb/ft)	Grade	Len (ft)	Set De...
Tubing	4/23/2018						
Other In Hole							
Run Date	Des			OD (in)	Top (ftKB)	Btm (ftKB)	
2/6/2002	Retrievable Bridge Plug			2 3/4	5,096.0	5,100.0	
	Fish			2 1/16	4,560.0	5,096.0	
Proposed Other In Hole							
Des			OD (in)	Top (ftKB)		Btm (ftKB)	
Logs							
Date	Type				Top, MD (ftKB)		Btm, MD (ftKB)
Perforation Data							
Linked Zone	Sum of Entered Shot Total	Top (ftKB)		Btm (ftKB)		Date	
CODELL, ORIGINAL HOLE	0	7,114.00		7,124.00		9/8/1988	
Total (Sum)	0						

Well Name: EACHUS UPRR 42-23

VERTICAL - ORIGINAL HOLE, 5/31/2018 10:15:01 AM

Job Supply Amounts

MD (ftKB)	Vertical schematic (actual)	Supply Item Des	Type	Uni...	Job Category	Total...	Total...	Total...
11.2	 <p>Tubing; 4/23/2018; 0.0 Cement Plug; 11.0-46.0; 2/7/2002; 10 SX PLUG FROM 32' TO SURFACE</p> <p>Casing Joints; 11.0-563.5; 8 5/8; 24.00; 8/24/1988</p> <p>Surface Casing Cement; 11.0-565.0; 8/24/1988; 290 SX SHOE PLUG; 500.0-616.0; 2/7/2002; 100 SX PLUG FROM 616' TO SURFACE</p> <p>Guide Shoe; 563.5-565.0; 8 5/8; 8/24/1988</p> <p>Surface; 11.0-565.0; 8 5/8; 24.00; 8/24/1988</p>							
45.9								
500.0								
563.6								
565.0								
565.9								
616.1								
850.1								
2,765.1								
2,964.9								
4,136.2	 <p>Cement Plug; 2,765.0-2,965.0; 2/7/2002; 60 SX ON TOP OF FISH</p> <p>Casing Joints; 2,965.0-4,136.0; 2 3/8; 4.70; N- 80; 2/6/2002</p> <p>Cross Over; 4,136.0-4,137.0; 2 3/8; 2/6/2002</p> <p>Cross Over; 4,137.0-4,138.0; 2 7/8; 2/6/2002</p> <p>Cross Over; 4,138.0-4,139.0; 3 1/2; 2/6/2002</p> <p>Casing Joints; 4,139.0-4,529.0; 3 1/2; 9.20; N- 80; 2/6/2002</p> <p>Cross Over; 4,529.0-4,532.0; 3 1/2; 2/6/2002</p> <p>Cutlip Skirt; 4,532.0-4,535.0; 6 5/8; 2/6/2002</p> <p>Production; 2,965.0-4,535.0; 2 3/8; 4.70; N- 80; 2/6/2002</p>							
4,137.1								
4,138.1								
4,139.1								
4,528.9								
4,532.2								
4,535.1								
4,560.0								
5,096.1								
5,100.1								
6,492.1	 <p>Fish; 4,560.0-5,096.0; 2/6/2002</p> <p>Retrievable Bridge Plug; 5,096.0-5,100.0</p> <p>Casing Joints; 4,857.0-7,223.0; 3 1/2; 9.20; 8/29/1988</p> <p>Production Casing Cement; 6,492.0-7,225.0; 8/29/1988; 250 SX</p> <p>Perforated; 7,114.0-7,124.0; 9/8/1988; Perf</p> <p>Float Collar; 7,223.0-7,223.5; 3 1/2; 8/29/1988</p> <p>Float Shoe; 7,223.5-7,225.0; 3 1/2; 8/29/1988</p> <p>Production; 4,857.0-7,225.0; 3 1/2; 9.20; 8/29/1988</p>							
7,113.8								
7,124.0								
7,223.1								
7,223.4								
7,225.1								
7,265.1								