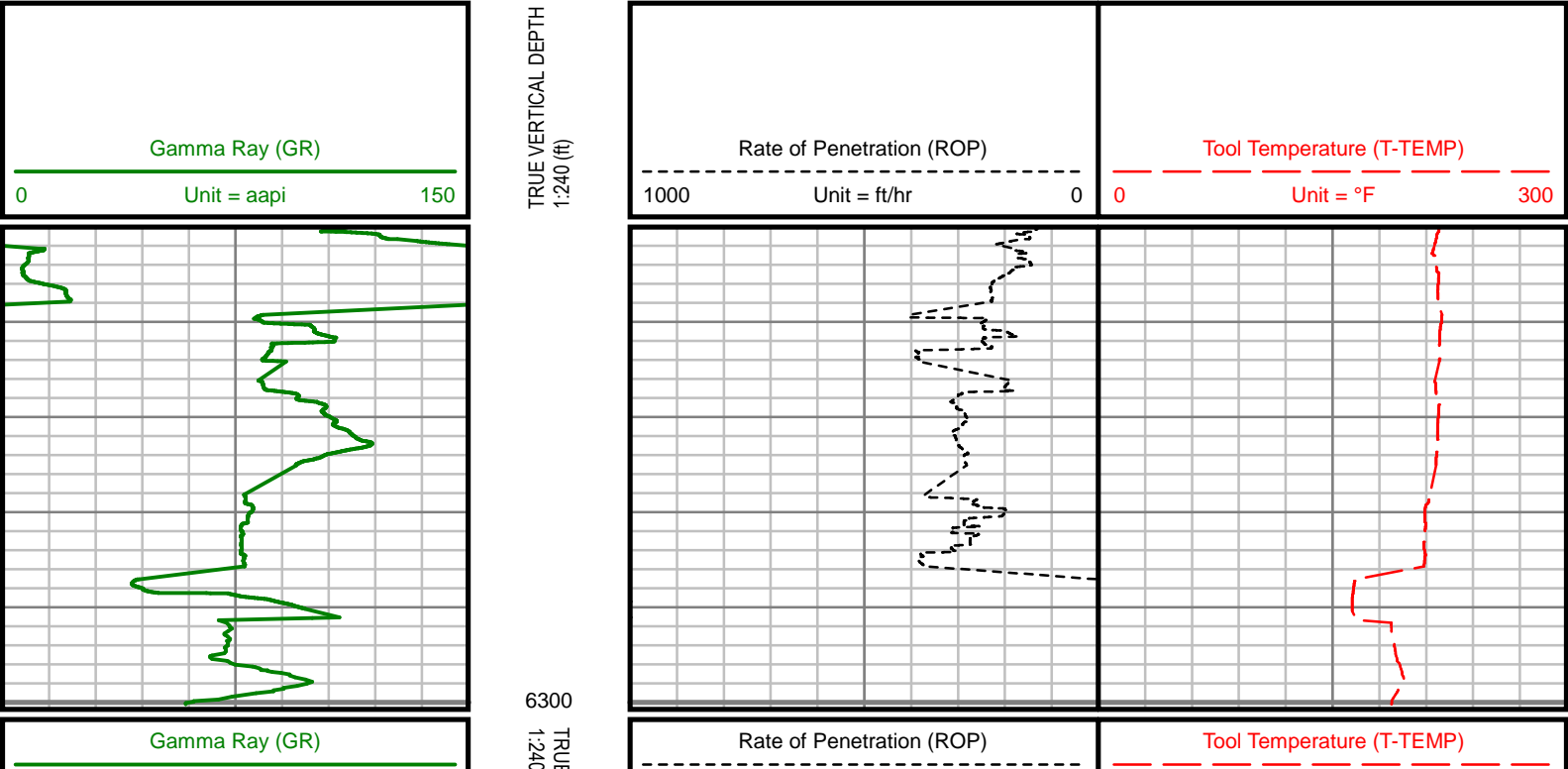
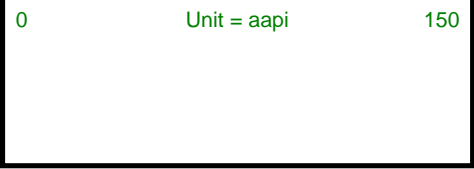


Remarks
BILL BARRETT CORPORATION PRODUCTION AFE# 19968D
SCIENTIFIC DRILLING INTERNATIONAL JOB# OP.008858
ALL REFERENCES IN THE DEPTH TRACK ARE AT BIT DEPTH.
ALL DATA IS MEMORY DATA UNLESS STATED OTHERWISE.
FLAT AVERAGE FILTER OF 1.00 FT APPLIED TO GAMMA RAY CURVE
FLAT AVERAGE FILTER OF 1.00 FT APPLIED TO RATE OF PENETRATION CURVE
FLAT AVERAGE FILTER OF 1.00 FT APPLIED TO TOOL TEMPERATURE CURVE
RUN #1: MWD / GAMMA RAY LOGGING RUN
SENSORS S/N: PULSER=78-123 / CONTROLLER=199 / MWD EYE=1766 / GAMMA RAY=1242
BIT TO SENSOR OFFSETS: MWD EYE=56.77 FT. / GAMMA RAY=52.77 FT.
RUN #2: MWD / GAMMA RAY LOGGING RUN
SENSORS S/N: PULSER=78-123 / CONTROLLER=199 / MWD EYE=1766 / GAMMA RAY=1242
BIT TO SENSOR OFFSETS: MWD EYE=56.27 FT. / GAMMA RAY=53.27 FT.
MNEMONICS LIST:
GR = GAMMA RAY
ROP = RATE OF PENETRATION
T-TEMP = TOOL TEMPERATURE

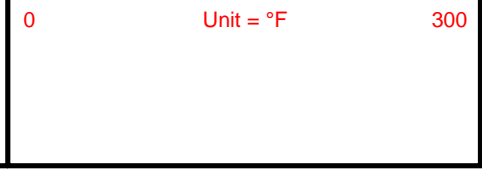
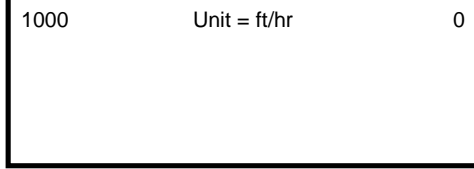
All interpretations are opinions based on inferences from electrical or other measurements and we cannot, and do not guarantee the accuracy or correctness of any interpretations, and we shall not, except in the case of gross or willful negligence on our part, be liable or responsible for any loss, costs, damages or expenses incurred or sustained by anyone resulting from any interpretation made by any of our officers, agents or employees. These interpretations are also subject to our general terms and conditions as set out in our current price schedule.

BILL BARRETT CORP.
ANSCHUTZ EQUUS FARMS 4-62-33-1724C ST1
WATTENBENG FIELD
WELD COUNTY, COLORADO
05-123-39732





VERTICAL DEPTH
(ft)



CUSTOMER
PROJECT

FIELD

BILL BARRETT CORPORATION
ANSCHUTZ EQUUS FARMS 4-62-33-1724C
ST 1
WATTENBERG

WELL INFORMATION
Lat/Long
Northing
Easting
UWI

40° 16' 11.8" N, 104° 20' 14" W
1,343,309.48 ft
3,324,467.6 ft
05-123-39732

MAP INFORMATION
North Reference
Grid Correction
System
Datum
Map Zone

True North

US State Plane 1983
North American Datum 1983 (GRS 1980)
Colorado North: 0501

VERTICAL SECTION REFERENCE
+N/-S
+E/-W
Proposal Direction
Calculation Method

0 ft
0 ft
89.75°
Minimum Curvature

TRUE
MAG

GEOMAGNETIC REFERENCE INFORMATION

Local Gravity: 998.641 mG [computed]

MD	MODEL	DATE	DECLINATION	MAG TO TRUE
0-16280 ft	HDGM2018	16 Mar 2018	8.22°	add 8.22°

WELL NOTES

OPERATORS
A. CARTER, C. JAKUES, M. BAILY

MD	Inc	Azim	TVD	VS	+N/-S	+E/-W	DLS
ft	deg	deg	ft	ft	ft	ft	°/100ft
6669.00	90.07	88.47	6300.17	39.31	321.50	37.92	Invalid
6773.00	93.60	89.09	6296.84	143.23	323.71	141.83	3.44
6821.00	93.26	88.30	6293.97	191.13	324.80	189.73	1.80
6915.00	93.70	89.15	6288.27	284.94	326.89	283.53	1.02
6922.00	93.09	89.48	6287.85	291.93	326.97	290.52	9.77
6932.00	92.85	89.35	6287.34	301.92	327.08	300.50	2.72
6946.00	89.73	88.69	6287.02	315.91	327.31	314.50	22.78
7008.00	86.64	87.79	6288.98	377.85	329.21	376.43	5.20
7102.00	87.55	87.92	6293.75	471.68	332.72	470.24	0.98
7195.00	88.56	87.35	6296.91	564.56	336.55	563.11	1.25
7289.00	88.92	86.88	6298.98	658.43	341.28	656.96	0.64
7383.00	90.67	87.14	6299.31	752.32	346.19	750.83	1.88
7476.00	92.05	87.27	6297.11	845.20	350.73	843.69	1.49
7570.00	90.03	85.91	6295.40	939.04	356.32	937.50	2.58
7665.00	90.60	86.34	6294.87	1033.84	362.74	1032.28	0.75
7759.00	90.57	90.79	6293.90	1127.79	365.10	1126.23	4.74
7853.00	91.01	91.20	6292.61	1221.76	363.47	1220.20	0.64
7947.00	91.07	94.30	6290.90	1315.61	358.96	1314.07	3.30
8040.00	90.94	93.58	6289.27	1408.34	352.57	1406.83	0.78
8134.00	91.01	93.81	6287.67	1502.11	346.51	1500.62	0.25

MD ft	Inc deg	Azim deg	TVD ft	VS ft	+N/-S ft	+E/-W ft	DLS °/100ft
8227.00	89.23	89.35	6287.48	1595.03	343.95	1593.56	5.16
8322.00	88.32	88.02	6289.51	1689.99	346.13	1688.51	1.69
8415.00	88.96	87.98	6291.72	1782.92	349.38	1781.43	0.69
8509.00	90.74	87.76	6291.97	1876.87	352.87	1875.36	1.91
8603.00	91.17	88.61	6290.40	1970.82	355.84	1969.30	1.02
8697.00	90.77	89.39	6288.80	2064.80	357.48	2063.27	0.93
8790.00	90.27	89.69	6287.95	2157.79	358.23	2156.26	0.63
8884.00	89.43	89.81	6288.20	2251.79	358.65	2250.26	0.90
8978.00	89.66	89.40	6288.95	2345.79	359.29	2344.25	0.50
9071.00	89.83	88.19	6289.36	2438.77	361.25	2437.23	1.32
9165.00	90.64	87.73	6288.97	2532.72	364.59	2531.17	0.98
9260.00	91.28	88.28	6287.38	2627.66	367.89	2626.10	0.89
9354.00	90.81	87.94	6285.68	2721.61	370.99	2720.03	0.62
9448.00	90.84	87.09	6284.33	2815.53	375.07	2813.93	0.90
9541.00	90.17	86.44	6283.51	2908.40	380.31	2906.78	1.01
9635.00	90.27	88.44	6283.15	3002.32	384.50	3000.68	2.13
9729.00	90.77	87.61	6282.30	3096.27	387.74	3094.62	1.04
9823.00	90.47	87.40	6281.28	3190.19	391.84	3188.52	0.39
9916.00	90.54	88.12	6280.46	3283.13	395.48	3281.45	0.78
10010.00	90.67	89.79	6279.47	3377.11	397.19	3375.42	1.78

MD ft	Inc deg	Azim deg	TVD ft	VS ft	+N/-S ft	+E/-W ft	DLS °/100ft
10104.00	90.44	89.38	6278.56	3471.11	397.87	3469.42	0.50
10198.00	90.07	89.60	6278.15	3565.10	398.71	3563.41	0.45
10291.00	89.70	90.28	6278.34	3658.10	398.81	3656.41	0.84
10384.00	90.00	91.35	6278.58	3751.08	397.48	3749.40	1.20
10478.00	89.80	90.39	6278.75	3845.07	396.06	3843.39	1.05
10570.00	89.33	89.63	6279.45	3937.06	396.04	3935.38	0.97
10661.00	92.08	90.59	6278.33	4028.04	395.87	4026.37	3.20
10752.00	92.05	89.88	6275.05	4118.98	395.50	4117.31	0.78
10843.00	92.15	89.09	6271.72	4209.92	396.31	4208.24	0.87
10934.00	92.22	88.43	6268.25	4300.84	398.28	4299.15	0.73
11026.00	90.27	89.01	6266.26	4392.80	400.34	4391.10	2.21
11117.00	89.77	88.78	6266.23	4483.78	402.10	4482.09	0.61
11208.00	88.62	89.67	6267.51	4574.77	403.32	4573.07	1.59
11299.00	88.96	90.43	6269.43	4665.75	403.24	4664.05	0.91
11390.00	88.93	90.31	6271.11	4756.73	402.66	4755.03	0.14
11482.00	91.51	91.38	6270.76	4848.70	401.30	4847.01	3.04
11574.00	92.65	91.51	6267.42	4940.60	398.99	4938.92	1.25
11664.00	91.51	91.05	6264.14	5030.50	396.98	5028.83	1.37
11755.00	91.34	91.70	6261.88	5121.44	394.80	5119.78	0.74
11846.00	90.34	91.95	6260.54	5212.37	391.89	5210.72	1.14

MD	Inc	Azim	TVD	VS	+N/-S	+E/-W	DLS
ft	deg	deg	ft	ft	ft	ft	°/100ft
11937.00	90.94	91.41	6259.53	5303.31	389.23	5301.68	0.89
12028.00	88.59	90.59	6259.91	5394.28	387.64	5392.65	2.73
12119.00	86.84	91.41	6263.53	5485.18	386.05	5483.56	2.12
12211.00	88.59	91.40	6267.19	5577.07	383.80	5575.46	1.90
12302.00	89.63	91.05	6268.61	5668.03	381.85	5666.43	1.21
12393.00	88.56	91.46	6270.05	5758.98	379.86	5757.39	1.26
12484.00	88.69	88.43	6272.23	5849.94	379.95	5848.35	3.33
12576.00	88.93	89.89	6274.15	5941.92	381.30	5940.32	1.60
12667.00	90.10	89.87	6274.92	6032.91	381.49	6031.32	1.29
12758.00	90.74	91.90	6274.25	6123.89	380.09	6122.30	2.34
12849.00	90.44	90.60	6273.32	6214.85	378.10	6213.27	1.47
12940.00	88.39	90.47	6274.25	6305.83	377.26	6304.26	2.26
13031.00	88.79	87.64	6276.49	6396.79	378.76	6395.21	3.13
13122.00	89.06	89.77	6278.20	6487.75	380.82	6486.16	2.35
13214.00	90.74	92.93	6278.36	6579.70	378.65	6578.12	3.89
13305.00	91.54	90.48	6276.55	6670.62	375.95	6669.06	2.83
13397.00	90.97	90.19	6274.53	6762.59	375.41	6761.03	0.70
13488.00	90.70	90.87	6273.19	6853.57	374.57	6852.02	0.81
13579.00	90.84	90.38	6271.97	6944.56	373.57	6943.00	0.56
13669.00	90.60	87.75	6270.83	7034.53	375.04	7032.98	2.94

MD	Inc	Azim	TVD	VS	+N/-S	+E/-W	DLS
ft	deg	deg	ft	ft	ft	ft	°/100ft
13760.00	88.82	86.66	6271.29	7125.44	379.48	7123.86	2.29
13852.00	91.14	86.81	6271.31	7217.30	384.72	7215.71	2.52
13943.00	92.21	90.14	6268.65	7308.23	387.14	7306.62	3.85
14034.00	91.75	88.74	6265.50	7399.17	388.03	7397.56	1.62
14126.00	89.93	86.05	6264.16	7491.07	392.21	7489.44	3.52
14217.00	90.30	85.18	6263.97	7581.83	399.16	7580.18	1.04
14308.00	90.37	86.96	6263.44	7672.64	405.40	7670.96	1.95
14399.00	91.38	89.45	6262.05	7763.59	408.25	7761.89	2.95
14490.00	91.38	89.38	6259.86	7854.56	409.18	7852.86	0.07
14581.00	91.17	89.66	6257.84	7945.54	409.94	7943.84	0.38
14673.00	90.91	89.95	6256.17	8037.52	410.25	8035.82	0.43
14764.00	90.80	89.38	6254.81	8128.51	410.78	8126.81	0.63
14856.00	90.27	89.05	6253.95	8220.50	412.04	8218.79	0.68
14947.00	90.97	89.80	6252.96	8311.49	412.94	8309.78	1.13
15038.00	89.90	88.54	6252.27	8402.48	414.26	8400.77	1.83
15129.00	90.67	90.44	6251.81	8493.48	415.07	8491.76	2.26
15221.00	89.60	90.54	6251.60	8585.47	414.29	8583.75	1.17
15312.00	90.81	91.37	6251.28	8676.44	412.78	8674.74	1.61
15403.00	91.71	93.71	6249.28	8767.31	408.74	8765.62	2.76
15494.00	90.81	92.06	6247.28	8858.14	404.16	8856.48	2.07

MD	Inc	Azim	TVD	VS	+N/-S	+E/-W	DLS
ft	deg	deg	ft	ft	ft	ft	°/100ft
15585.00	90.10	91.46	6246.56	8949.08	401.36	8947.43	1.02
15675.00	90.10	91.22	6246.40	9039.05	399.25	9037.41	0.27
15767.00	89.66	89.44	6246.59	9131.04	398.72	9129.40	2.00
15858.00	89.06	88.14	6247.60	9222.02	400.65	9220.37	1.57
15949.00	88.86	88.27	6249.25	9312.97	403.50	9311.31	0.26
16043.00	88.59	88.32	6251.34	9406.92	406.30	9405.25	0.29
16137.00	90.03	89.14	6252.47	9500.89	408.38	9499.21	1.77
16230.00	89.60	88.69	6252.77	9593.88	410.13	9592.20	0.68
16280.00	89.26	88.90	6253.27	9643.87	411.18	9642.18	0.79

MD ft	Inc deg	Azim deg	TVD ft	VS ft	+N/-S ft	+E/-W ft	DLS °/100ft

5" = 100' TVD