

BAYSWATER E & P, LLC

| | | | |
|--------------|-----------------|----------|------------------------------|
| Location | Weld County, CO | Slot | EAST AULT TA-18-19HN |
| Field | WATTENBERG | Well | W EAST AULT TA-18-19HN |
| Installation | East Ault Pad | Wellbore | W EAST AULT TA-18-19HN (PWB) |

WELL PROFILE DATA

| Point | MD | Inc | Azi | TVD | North | East | deg/100ft | V. Sect |
|-------------------------|----------|-------|--------|---------|-----------|-----------|-----------|---------|
| Tie on | 25.00 | 0.00 | 0.00 | 25.00 | S 0.00 | W 0.00 | | 0.00 |
| KOP | 1025.00 | 0.00 | 70.67 | 1025.00 | S 0.00 | W 0.00 | 0.00 | 0.00 |
| End of Build | 1635.59 | 12.21 | 70.67 | 1630.97 | N 21.46 | E 61.17 | 2.00 | -13.73 |
| End of Hold | 6677.52 | 12.21 | 70.67 | 6558.82 | N 374.55 | E 1067.51 | 0.00 | -239.54 |
| Target EAST A...N - EP | 7618.71 | 90.15 | 179.79 | 7159.00 | S 198.04 | E 1192.64 | 10.00 | 344.13 |
| T.D. & Target EAS...BHL | 17263.59 | 90.15 | 179.79 | 7134.00 | S 9842.82 | E 1227.67 | 0.00 | 9919.08 |

East (Feet) ->

-800 0 800 1600 2400
Scale 1 cm = 400 ft

Surface 0.00 N 0.00 E

EAST AULT TA-18-19HN - EP

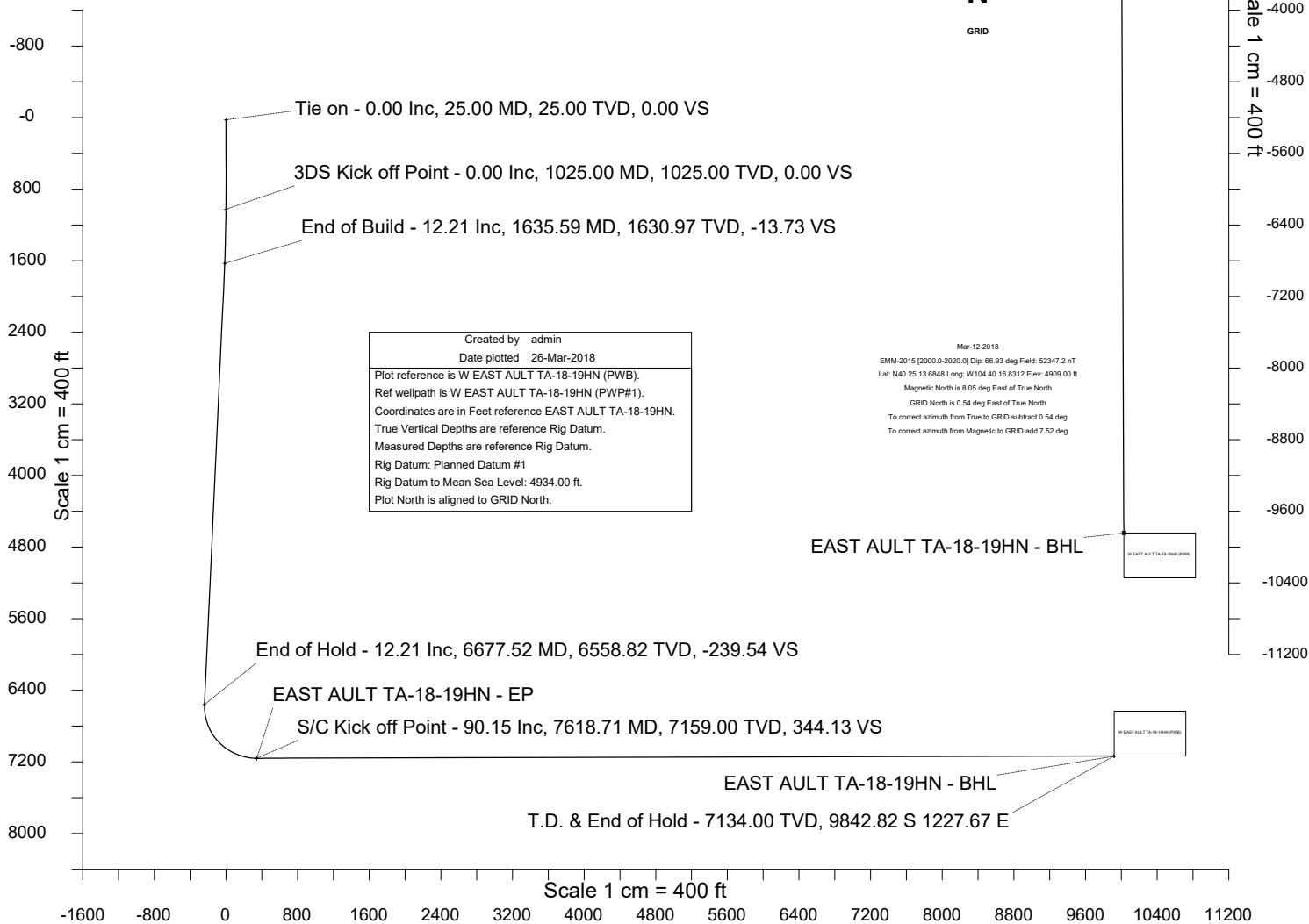
N

GRID

<- North(Feet)

Scale 1 cm = 400 ft

<- True Vertical Depth (Feet)





SYSDRILL
Well Design Combined Report
Wellbore: W EAST AULT TA-18-19HN (PWB)



Wellhead Details

| Name | Latitude | Longitude | Northing | Easting | North | East | Slot Elevation Above Ground |
|----------------------|-------------|---------------|--------------|--------------|-----------|----------|-----------------------------|
| EAST AULT TA-18-19HN | 40.58167300 | -104.70444700 | 1455735.9699 | 3220973.0074 | 58643.50N | 9744.19W | 0.00 |

Declination

| Date | Source | Time |
|-------------|--------------------------|-------|
| Mar-12-2018 | EMM-2015 [2000.0-2020.0] | 20:03 |

Installation Details

| Name | Installation Position (Latitude) | Installation Position (Longitude) | Northing | Easting | Coord System Name | North Alignment |
|---------------|----------------------------------|-----------------------------------|--------------|--------------|--|-----------------|
| East Ault Pad | 40.42046800 | -104.67134200 | 1397094.8569 | 3230716.7970 | CO83-NF on NORTH AMERICAN DATUM 1983 datum | Grid |

Summary Wellpath

| MD[ft] | Inc[deg] | Azi[deg] | TVD[ft] | North[ft] | East[ft] | Dogleg [deg/100ft] | Vertical Section[ft] | Northing | Easting |
|----------|----------|----------|---------|-----------|----------|--------------------|----------------------|------------|------------|
| 25.00 | 0.00 | 0.000 | 25.00 | 0.00N | 0.00E | | 0.00 | 1455735.97 | 3220973.01 |
| 1025.00 | 0.00 | 70.670 | 1025.00 | 0.00N | 0.00E | ==> | 0.00 | 1455735.97 | 3220973.01 |
| 1635.59 | 12.21 | 70.670 | 1630.97 | 21.46N | 61.17E | 2.00 | -13.73 | 1455757.43 | 3221034.17 |
| 6677.52 | 12.21 | 70.670 | 6558.82 | 374.55N | 1067.51E | ==> | -239.54 | 1456110.51 | 3222040.49 |
| 7618.71 | 90.15 | 179.790 | 7159.00 | 198.04S | 1192.64E | 10.00 | 344.13 | 1455537.94 | 3222165.62 |
| 17263.59 | 90.15 | 179.790 | 7134.00 | 9842.82S | 1227.67E | ==> | 9919.08 | 1445893.44 | 3222200.65 |

Interpolated Wellpath

| MD[ft] | Inc[deg] | Azi[deg] | TVD[ft] | North[ft] | East[ft] | Dogleg [deg/100ft] | Vertical Section[ft] | All Station Comments |
|---------|----------|----------|---------|-----------|----------|--------------------|----------------------|----------------------|
| 0.00 | 0.00 | 0.000 | 0.00 | 0.00N | 0.00E | | 0.00 | Rig Datum |
| 25.00 | 0.00 | 0.000 | 25.00 | 0.00N | 0.00E | ==> | 0.00 | Slot Datum |
| 100.00 | 0.00 | 0.000 | 100.00 | 0.00N | 0.00E | ==> | 0.00 | |
| 200.00 | 0.00 | 0.000 | 200.00 | 0.00N | 0.00E | ==> | 0.00 | |
| 300.00 | 0.00 | 0.000 | 300.00 | 0.00N | 0.00E | ==> | 0.00 | |
| 400.00 | 0.00 | 0.000 | 400.00 | 0.00N | 0.00E | ==> | 0.00 | |
| 500.00 | 0.00 | 0.000 | 500.00 | 0.00N | 0.00E | ==> | 0.00 | |
| 600.00 | 0.00 | 0.000 | 600.00 | 0.00N | 0.00E | ==> | 0.00 | |
| 700.00 | 0.00 | 0.000 | 700.00 | 0.00N | 0.00E | ==> | 0.00 | |
| 800.00 | 0.00 | 0.000 | 800.00 | 0.00N | 0.00E | ==> | 0.00 | |
| 900.00 | 0.00 | 0.000 | 900.00 | 0.00N | 0.00E | ==> | 0.00 | |
| 1000.00 | 0.00 | 0.000 | 1000.00 | 0.00N | 0.00E | ==> | 0.00 | |
| 1100.00 | 1.50 | 70.670 | 1099.99 | 0.33N | 0.93E | 2.00 | -0.21 | |
| 1200.00 | 3.50 | 70.670 | 1199.89 | 1.77N | 5.04E | 2.00 | -1.13 | |
| 1300.00 | 5.50 | 70.670 | 1299.58 | 4.37N | 12.45E | 2.00 | -2.79 | |
| 1400.00 | 7.50 | 70.670 | 1398.93 | 8.11N | 23.13E | 2.00 | -5.19 | |
| 1500.00 | 9.50 | 70.670 | 1497.83 | 13.01N | 37.07E | 2.00 | -8.32 | |
| 1600.00 | 11.50 | 70.670 | 1596.15 | 19.04N | 54.27E | 2.00 | -12.18 | |
| 1700.00 | 12.21 | 70.670 | 1693.93 | 25.97N | 74.02E | ==> | -16.61 | |
| 1800.00 | 12.21 | 70.670 | 1791.67 | 32.97N | 93.98E | ==> | -21.09 | |
| 1900.00 | 12.21 | 70.670 | 1889.40 | 39.98N | 113.94E | ==> | -25.57 | |
| 2000.00 | 12.21 | 70.670 | 1987.14 | 46.98N | 133.90E | ==> | -30.05 | |
| 2100.00 | 12.21 | 70.670 | 2084.88 | 53.98N | 153.86E | ==> | -34.53 | |
| 2200.00 | 12.21 | 70.670 | 2182.62 | 60.99N | 173.82E | ==> | -39.00 | |
| 2300.00 | 12.21 | 70.670 | 2280.35 | 67.99N | 193.78E | ==> | -43.48 | |
| 2400.00 | 12.21 | 70.670 | 2378.09 | 74.99N | 213.74E | ==> | -47.96 | |
| 2500.00 | 12.21 | 70.670 | 2475.83 | 82.00N | 233.70E | ==> | -52.44 | |
| 2600.00 | 12.21 | 70.670 | 2573.57 | 89.00N | 253.66E | ==> | -56.92 | |
| 2700.00 | 12.21 | 70.670 | 2671.30 | 96.00N | 273.62E | ==> | -61.40 | |
| 2800.00 | 12.21 | 70.670 | 2769.04 | 103.00N | 293.58E | ==> | -65.88 | |
| 2900.00 | 12.21 | 70.670 | 2866.78 | 110.01N | 313.54E | ==> | -70.36 | |
| 3000.00 | 12.21 | 70.670 | 2964.51 | 117.01N | 333.50E | ==> | -74.83 | |

All data is in Feet unless otherwise stated
Coordinates are from Slot MD's are from Rig and TVD's are from Rig (Planned Datum #1 4934.0ft above Mean Sea Level)
Vertical Section is from 0.00N 0.00E on azimuth 172.890 degrees
Bottom hole distance is 9919.08 Feet on azimuth 172.89 degrees from Wellhead
Calculation method uses Minimum Curvature method
Prepared by Microsoft
Date Printed: 26-Mar-2018



SYS DRILL
Well Design Combined Report
Wellbore: W EAST AULT TA-18-19HN (PWB)



| Interpolated Wellpath | | | | | | | | |
|-----------------------|----------|----------|---------|-----------|----------|-----------------------|-------------------------|-------------------------|
| MD[ft] | Inc[deg] | Azi[deg] | TVD[ft] | North[ft] | East[ft] | Dogleg [deg/100ft] | Vertical Section[ft] | All Station Comments |
| 3100.00 | 12.21 | 70.670 | 3062.25 | 124.01N | 353.46E | ==> | -79.31 | |
| 3200.00 | 12.21 | 70.670 | 3159.99 | 131.02N | 373.42E | ==> | -83.79 | |
| 3300.00 | 12.21 | 70.670 | 3257.73 | 138.02N | 393.38E | ==> | -88.27 | |
| 3400.00 | 12.21 | 70.670 | 3355.46 | 145.02N | 413.34E | ==> | -92.75 | |
| 3500.00 | 12.21 | 70.670 | 3453.20 | 152.03N | 433.30E | ==> | -97.23 | |
| 3600.00 | 12.21 | 70.670 | 3550.94 | 159.03N | 453.26E | ==> | -101.71 | |
| 3700.00 | 12.21 | 70.670 | 3648.68 | 166.03N | 473.21E | ==> | -106.19 | |
| 3800.00 | 12.21 | 70.670 | 3746.41 | 173.03N | 493.17E | ==> | -110.66 | |
| 3900.00 | 12.21 | 70.670 | 3844.15 | 180.04N | 513.13E | ==> | -115.14 | |
| 4000.00 | 12.21 | 70.670 | 3941.89 | 187.04N | 533.09E | ==> | -119.62 | |
| 4100.00 | 12.21 | 70.670 | 4039.62 | 194.04N | 553.05E | ==> | -124.10 | |
| 4200.00 | 12.21 | 70.670 | 4137.36 | 201.05N | 573.01E | ==> | -128.58 | |
| 4300.00 | 12.21 | 70.670 | 4235.10 | 208.05N | 592.97E | ==> | -133.06 | |
| 4400.00 | 12.21 | 70.670 | 4332.84 | 215.05N | 612.93E | ==> | -137.54 | |
| 4500.00 | 12.21 | 70.670 | 4430.57 | 222.06N | 632.89E | ==> | -142.02 | |
| 4600.00 | 12.21 | 70.670 | 4528.31 | 229.06N | 652.85E | ==> | -146.50 | |
| 4700.00 | 12.21 | 70.670 | 4626.05 | 236.06N | 672.81E | ==> | -150.97 | |
| 4800.00 | 12.21 | 70.670 | 4723.79 | 243.06N | 692.77E | ==> | -155.45 | |
| 4900.00 | 12.21 | 70.670 | 4821.52 | 250.07N | 712.73E | ==> | -159.93 | |
| 5000.00 | 12.21 | 70.670 | 4919.26 | 257.07N | 732.69E | ==> | -164.41 | |
| 5100.00 | 12.21 | 70.670 | 5017.00 | 264.07N | 752.65E | ==> | -168.89 | |
| 5200.00 | 12.21 | 70.670 | 5114.73 | 271.08N | 772.61E | ==> | -173.37 | |
| 5300.00 | 12.21 | 70.670 | 5212.47 | 278.08N | 792.57E | ==> | -177.85 | |
| 5400.00 | 12.21 | 70.670 | 5310.21 | 285.08N | 812.53E | ==> | -182.33 | |
| 5500.00 | 12.21 | 70.670 | 5407.95 | 292.09N | 832.49E | ==> | -186.80 | |
| 5600.00 | 12.21 | 70.670 | 5505.68 | 299.09N | 852.45E | ==> | -191.28 | |
| 5700.00 | 12.21 | 70.670 | 5603.42 | 306.09N | 872.41E | ==> | -195.76 | |
| 5800.00 | 12.21 | 70.670 | 5701.16 | 313.10N | 892.37E | ==> | -200.24 | |
| 5900.00 | 12.21 | 70.670 | 5798.90 | 320.10N | 912.33E | ==> | -204.72 | |
| 6000.00 | 12.21 | 70.670 | 5896.63 | 327.10N | 932.28E | ==> | -209.20 | |
| 6100.00 | 12.21 | 70.670 | 5994.37 | 334.10N | 952.24E | ==> | -213.68 | |
| 6200.00 | 12.21 | 70.670 | 6092.11 | 341.11N | 972.20E | ==> | -218.16 | |
| 6300.00 | 12.21 | 70.670 | 6189.84 | 348.11N | 992.16E | ==> | -222.63 | |
| 6400.00 | 12.21 | 70.670 | 6287.58 | 355.11N | 1012.12E | ==> | -227.11 | |
| 6500.00 | 12.21 | 70.670 | 6385.32 | 362.12N | 1032.08E | ==> | -231.59 | |
| 6600.00 | 12.21 | 70.670 | 6483.06 | 369.12N | 1052.04E | ==> | -236.07 | |
| 6700.00 | 11.68 | 81.240 | 6580.82 | 375.68N | 1072.01E | 10.00 | -240.11 | |
| 6800.00 | 14.19 | 125.750 | 6678.51 | 370.05N | 1092.01E | 10.00 | -232.05 | |
| 6900.00 | 21.52 | 148.520 | 6773.74 | 347.19N | 1111.58E | 10.00 | -206.94 | |
| 7000.00 | 30.37 | 159.330 | 6863.62 | 307.79N | 1130.13E | 10.00 | -165.55 | |
| 7100.00 | 39.73 | 165.520 | 6945.42 | 253.06N | 1147.08E | 10.00 | -109.14 | |
| 7200.00 | 49.31 | 169.630 | 7016.65 | 184.65N | 1161.94E | 10.00 | -39.42 | |
| 7300.00 | 59.00 | 172.700 | 7075.16 | 104.65N | 1174.24E | 10.00 | 41.49 | |
| 7400.00 | 68.74 | 175.200 | 7119.15 | 15.47N | 1183.60E | 10.00 | 131.14 | |
| 7500.00 | 78.52 | 177.380 | 7147.30 | 80.15S | 1189.76E | 10.00 | 226.79 | |
| 7600.00 | 88.32 | 179.420 | 7158.75 | 179.33S | 1192.51E | 10.00 | 325.54 | |
| 7700.00 | 90.15 | 179.790 | 7158.79 | 279.32S | 1192.94E | ==> | 424.82 | |
| 7800.00 | 90.15 | 179.790 | 7158.53 | 379.32S | 1193.30E | ==> | 524.10 | |
| 7900.00 | 90.15 | 179.790 | 7158.27 | 479.32S | 1193.66E | ==> | 623.37 | |
| 8000.00 | 90.15 | 179.790 | 7158.01 | 579.32S | 1194.03E | ==> | 722.65 | |
| 8100.00 | 90.15 | 179.790 | 7157.75 | 679.32S | 1194.39E | ==> | 821.93 | |
| 8200.00 | 90.15 | 179.790 | 7157.49 | 779.32S | 1194.75E | ==> | 921.20 | |
| 8300.00 | 90.15 | 179.790 | 7157.23 | 879.32S | 1195.12E | ==> | 1020.48 | |
| 8400.00 | 90.15 | 179.790 | 7156.97 | 979.32S | 1195.48E | ==> | 1119.75 | |
| 8500.00 | 90.15 | 179.790 | 7156.72 | 1079.32S | 1195.84E | ==> | 1219.03 | |
| 8600.00 | 90.15 | 179.790 | 7156.46 | 1179.31S | 1196.21E | ==> | 1318.30 | |
| 8700.00 | 90.15 | 179.790 | 7156.20 | 1279.31S | 1196.57E | ==> | 1417.58 | |
| 8800.00 | 90.15 | 179.790 | 7155.94 | 1379.31S | 1196.93E | ==> | 1516.85 | |
| 8900.00 | 90.15 | 179.790 | 7155.68 | 1479.31S | 1197.30E | ==> | 1616.13 | |

All data is in Feet unless otherwise stated
Coordinates are from Slot MD's are from Rig and TVD's are from Rig (Planned Datum #1 4934.0ft above Mean Sea Level)
Vertical Section is from 0.00N 0.00E on azimuth 172.890 degrees
Bottom hole distance is 9919.08 Feet on azimuth 172.89 degrees from Wellhead
Calculation method uses Minimum Curvature method
Prepared by Microsoft
Date Printed: 26-Mar-2018



SYSDRILL
Well Design Combined Report
Wellbore: W EAST AULT TA-18-19HN (PWB)



| Interpolated Wellpath | | | | | | | | |
|-----------------------|----------|----------|---------|-----------|----------|-----------------------|-------------------------|-------------------------|
| MD[ft] | Inc[deg] | Azi[deg] | TVD[ft] | North[ft] | East[ft] | Dogleg [deg/100ft] | Vertical Section[ft] | All Station Comments |
| 9000.00 | 90.15 | 179.790 | 7155.42 | 1579.31S | 1197.66E | ==> | 1715.40 | |
| 9100.00 | 90.15 | 179.790 | 7155.16 | 1679.31S | 1198.02E | ==> | 1814.68 | |
| 9200.00 | 90.15 | 179.790 | 7154.90 | 1779.31S | 1198.39E | ==> | 1913.95 | |
| 9300.00 | 90.15 | 179.790 | 7154.64 | 1879.31S | 1198.75E | ==> | 2013.23 | |
| 9400.00 | 90.15 | 179.790 | 7154.38 | 1979.31S | 1199.11E | ==> | 2112.50 | |
| 9500.00 | 90.15 | 179.790 | 7154.12 | 2079.31S | 1199.48E | ==> | 2211.78 | |
| 9600.00 | 90.15 | 179.790 | 7153.86 | 2179.30S | 1199.84E | ==> | 2311.05 | |
| 9700.00 | 90.15 | 179.790 | 7153.61 | 2279.30S | 1200.20E | ==> | 2410.33 | |
| 9800.00 | 90.15 | 179.790 | 7153.35 | 2379.30S | 1200.57E | ==> | 2509.60 | |
| 9900.00 | 90.15 | 179.790 | 7153.09 | 2479.30S | 1200.93E | ==> | 2608.88 | |
| 10000.00 | 90.15 | 179.790 | 7152.83 | 2579.30S | 1201.29E | ==> | 2708.15 | |
| 10100.00 | 90.15 | 179.790 | 7152.57 | 2679.30S | 1201.66E | ==> | 2807.43 | |
| 10200.00 | 90.15 | 179.790 | 7152.31 | 2779.30S | 1202.02E | ==> | 2906.70 | |
| 10300.00 | 90.15 | 179.790 | 7152.05 | 2879.30S | 1202.38E | ==> | 3005.98 | |
| 10400.00 | 90.15 | 179.790 | 7151.79 | 2979.30S | 1202.74E | ==> | 3105.25 | |
| 10500.00 | 90.15 | 179.790 | 7151.53 | 3079.30S | 1203.11E | ==> | 3204.53 | |
| 10600.00 | 90.15 | 179.790 | 7151.27 | 3179.29S | 1203.47E | ==> | 3303.80 | |
| 10700.00 | 90.15 | 179.790 | 7151.01 | 3279.29S | 1203.83E | ==> | 3403.08 | |
| 10800.00 | 90.15 | 179.790 | 7150.75 | 3379.29S | 1204.20E | ==> | 3502.35 | |
| 10900.00 | 90.15 | 179.790 | 7150.49 | 3479.29S | 1204.56E | ==> | 3601.63 | |
| 11000.00 | 90.15 | 179.790 | 7150.24 | 3579.29S | 1204.92E | ==> | 3700.90 | |
| 11100.00 | 90.15 | 179.790 | 7149.98 | 3679.29S | 1205.29E | ==> | 3800.18 | |
| 11200.00 | 90.15 | 179.790 | 7149.72 | 3779.29S | 1205.65E | ==> | 3899.45 | |
| 11300.00 | 90.15 | 179.790 | 7149.46 | 3879.29S | 1206.01E | ==> | 3998.73 | |
| 11400.00 | 90.15 | 179.790 | 7149.20 | 3979.29S | 1206.38E | ==> | 4098.00 | |
| 11500.00 | 90.15 | 179.790 | 7148.94 | 4079.29S | 1206.74E | ==> | 4197.28 | |
| 11600.00 | 90.15 | 179.790 | 7148.68 | 4179.29S | 1207.10E | ==> | 4296.55 | |
| 11700.00 | 90.15 | 179.790 | 7148.42 | 4279.28S | 1207.47E | ==> | 4395.83 | |
| 11800.00 | 90.15 | 179.790 | 7148.16 | 4379.28S | 1207.83E | ==> | 4495.10 | |
| 11900.00 | 90.15 | 179.790 | 7147.90 | 4479.28S | 1208.19E | ==> | 4594.38 | |
| 12000.00 | 90.15 | 179.790 | 7147.64 | 4579.28S | 1208.56E | ==> | 4693.65 | |
| 12100.00 | 90.15 | 179.790 | 7147.38 | 4679.28S | 1208.92E | ==> | 4792.93 | |
| 12200.00 | 90.15 | 179.790 | 7147.13 | 4779.28S | 1209.28E | ==> | 4892.20 | |
| 12300.00 | 90.15 | 179.790 | 7146.87 | 4879.28S | 1209.65E | ==> | 4991.48 | |
| 12400.00 | 90.15 | 179.790 | 7146.61 | 4979.28S | 1210.01E | ==> | 5090.75 | |
| 12500.00 | 90.15 | 179.790 | 7146.35 | 5079.28S | 1210.37E | ==> | 5190.03 | |
| 12600.00 | 90.15 | 179.790 | 7146.09 | 5179.28S | 1210.74E | ==> | 5289.30 | |
| 12700.00 | 90.15 | 179.790 | 7145.83 | 5279.27S | 1211.10E | ==> | 5388.58 | |
| 12800.00 | 90.15 | 179.790 | 7145.57 | 5379.27S | 1211.46E | ==> | 5487.85 | |
| 12900.00 | 90.15 | 179.790 | 7145.31 | 5479.27S | 1211.83E | ==> | 5587.13 | |
| 13000.00 | 90.15 | 179.790 | 7145.05 | 5579.27S | 1212.19E | ==> | 5686.40 | |
| 13100.00 | 90.15 | 179.790 | 7144.79 | 5679.27S | 1212.55E | ==> | 5785.68 | |
| 13200.00 | 90.15 | 179.790 | 7144.53 | 5779.27S | 1212.91E | ==> | 5884.95 | |
| 13300.00 | 90.15 | 179.790 | 7144.27 | 5879.27S | 1213.28E | ==> | 5984.23 | |
| 13400.00 | 90.15 | 179.790 | 7144.01 | 5979.27S | 1213.64E | ==> | 6083.50 | |
| 13500.00 | 90.15 | 179.790 | 7143.76 | 6079.27S | 1214.00E | ==> | 6182.78 | |
| 13600.00 | 90.15 | 179.790 | 7143.50 | 6179.27S | 1214.37E | ==> | 6282.05 | |
| 13700.00 | 90.15 | 179.790 | 7143.24 | 6279.26S | 1214.73E | ==> | 6381.33 | |
| 13800.00 | 90.15 | 179.790 | 7142.98 | 6379.26S | 1215.09E | ==> | 6480.60 | |
| 13900.00 | 90.15 | 179.790 | 7142.72 | 6479.26S | 1215.46E | ==> | 6579.88 | |
| 14000.00 | 90.15 | 179.790 | 7142.46 | 6579.26S | 1215.82E | ==> | 6679.15 | |
| 14100.00 | 90.15 | 179.790 | 7142.20 | 6679.26S | 1216.18E | ==> | 6778.43 | |
| 14200.00 | 90.15 | 179.790 | 7141.94 | 6779.26S | 1216.55E | ==> | 6877.70 | |
| 14300.00 | 90.15 | 179.790 | 7141.68 | 6879.26S | 1216.91E | ==> | 6976.98 | |
| 14400.00 | 90.15 | 179.790 | 7141.42 | 6979.26S | 1217.27E | ==> | 7076.25 | |
| 14500.00 | 90.15 | 179.790 | 7141.16 | 7079.26S | 1217.64E | ==> | 7175.53 | |
| 14600.00 | 90.15 | 179.790 | 7140.90 | 7179.26S | 1218.00E | ==> | 7274.80 | |
| 14700.00 | 90.15 | 179.790 | 7140.64 | 7279.25S | 1218.36E | ==> | 7374.08 | |
| 14800.00 | 90.15 | 179.790 | 7140.39 | 7379.25S | 1218.73E | ==> | 7473.35 | |

All data is in Feet unless otherwise stated
Coordinates are from Slot MD's are from Rig and TVD's are from Rig (Planned Datum #1 4934.0ft above Mean Sea Level)
Vertical Section is from 0.00N 0.00E on azimuth 172.890 degrees
Bottom hole distance is 9919.08 Feet on azimuth 172.89 degrees from Wellhead
Calculation method uses Minimum Curvature method
Prepared by Microsoft
Date Printed: 26-Mar-2018



SYS DRILL
Well Design Combined Report
Wellbore: W EAST AULT TA-18-19HN (PWB)



| Interpolated Wellpath | | | | | | | | |
|-----------------------|----------|----------|---------|-----------|----------|-----------------------|-------------------------|-------------------------|
| MD[ft] | Inc[deg] | Azi[deg] | TVD[ft] | North[ft] | East[ft] | Dogleg [deg/100ft] | Vertical Section[ft] | All Station Comments |
| 14900.00 | 90.15 | 179.790 | 7140.13 | 7479.25S | 1219.09E | ==> | 7572.63 | |
| 15000.00 | 90.15 | 179.790 | 7139.87 | 7579.25S | 1219.45E | ==> | 7671.91 | |
| 15100.00 | 90.15 | 179.790 | 7139.61 | 7679.25S | 1219.82E | ==> | 7771.18 | |
| 15200.00 | 90.15 | 179.790 | 7139.35 | 7779.25S | 1220.18E | ==> | 7870.46 | |
| 15300.00 | 90.15 | 179.790 | 7139.09 | 7879.25S | 1220.54E | ==> | 7969.73 | |
| | | | | | | | | |
| 15400.00 | 90.15 | 179.790 | 7138.83 | 7979.25S | 1220.91E | ==> | 8069.01 | |
| 15500.00 | 90.15 | 179.790 | 7138.57 | 8079.25S | 1221.27E | ==> | 8168.28 | |
| 15600.00 | 90.15 | 179.790 | 7138.31 | 8179.25S | 1221.63E | ==> | 8267.56 | |
| 15700.00 | 90.15 | 179.790 | 7138.05 | 8279.24S | 1222.00E | ==> | 8366.83 | |
| 15800.00 | 90.15 | 179.790 | 7137.79 | 8379.24S | 1222.36E | ==> | 8466.11 | |
| | | | | | | | | |
| 15900.00 | 90.15 | 179.790 | 7137.53 | 8479.24S | 1222.72E | ==> | 8565.38 | |
| 16000.00 | 90.15 | 179.790 | 7137.28 | 8579.24S | 1223.08E | ==> | 8664.66 | |
| 16100.00 | 90.15 | 179.790 | 7137.02 | 8679.24S | 1223.45E | ==> | 8763.93 | |
| 16200.00 | 90.15 | 179.790 | 7136.76 | 8779.24S | 1223.81E | ==> | 8863.21 | |
| 16300.00 | 90.15 | 179.790 | 7136.50 | 8879.24S | 1224.17E | ==> | 8962.48 | |
| | | | | | | | | |
| 16400.00 | 90.15 | 179.790 | 7136.24 | 8979.24S | 1224.54E | ==> | 9061.76 | |
| 16500.00 | 90.15 | 179.790 | 7135.98 | 9079.24S | 1224.90E | ==> | 9161.03 | |
| 16600.00 | 90.15 | 179.790 | 7135.72 | 9179.24S | 1225.26E | ==> | 9260.31 | |
| 16700.00 | 90.15 | 179.790 | 7135.46 | 9279.23S | 1225.63E | ==> | 9359.58 | |
| 16800.00 | 90.15 | 179.790 | 7135.20 | 9379.23S | 1225.99E | ==> | 9458.86 | |
| | | | | | | | | |
| 16900.00 | 90.15 | 179.790 | 7134.94 | 9479.23S | 1226.35E | ==> | 9558.13 | |
| 17000.00 | 90.15 | 179.790 | 7134.68 | 9579.23S | 1226.72E | ==> | 9657.41 | |
| 17100.00 | 90.15 | 179.790 | 7134.42 | 9679.23S | 1227.08E | ==> | 9756.68 | |
| 17200.00 | 90.15 | 179.790 | 7134.16 | 9779.23S | 1227.44E | ==> | 9855.96 | |
| 17263.59 | 90.15 | 179.790 | 7134.00 | 9842.82S | 1227.67E | ==> | 9919.08 | |

All data is in Feet unless otherwise stated
Coordinates are from Slot MD's are from Rig and TVD's are from Rig (Planned Datum #1 4934.0ft above Mean Sea Level)
Vertical Section is from 0.00N 0.00E on azimuth 172.890 degrees
Bottom hole distance is 9919.08 Feet on azimuth 172.89 degrees from Wellhead
Calculation method uses Minimum Curvature method
Prepared by Microsoft
Date Printed: 26-Mar-2018



SYSDRILL
Well Design Combined Report
Wellbore: W EAST AULT TA-18-19HN (PWB)



| Targets | | | | | | | |
|-------------------------------|-----------|----------|---------|-------------|---------------|------------|------------|
| Name | North[ft] | East[ft] | TVD[ft] | Latitude | Longitude | Northing | Easting |
| EAST AULT TA-18-19HN - BHL | 9842.82S | 1227.67E | 7134.00 | 40.55462700 | -104.70034700 | 1445893.44 | 3222200.65 |
| EAST AULT TA-18-19HN - EP | 198.04S | 1192.64E | 7159.00 | 40.58110000 | -104.70016000 | 1455537.94 | 3222165.62 |

| Survey Tool Program | | | | | |
|---------------------|-------------|----------|---------|---------------|-------------------|
| Reference | Survey Name | MD[ft] | TVD[ft] | Survey Tool | Error Model |
| 620338 | Planned | 1500.00 | 1497.83 | WdW Rate Gyro | Standard |
| 620337 | Planned | 17263.59 | 7134.00 | ISCWSA MWD | Rev 4 + SAG + FLT |

| Notes |
|-------|
| |