

BAYSWATER E & P, LLC

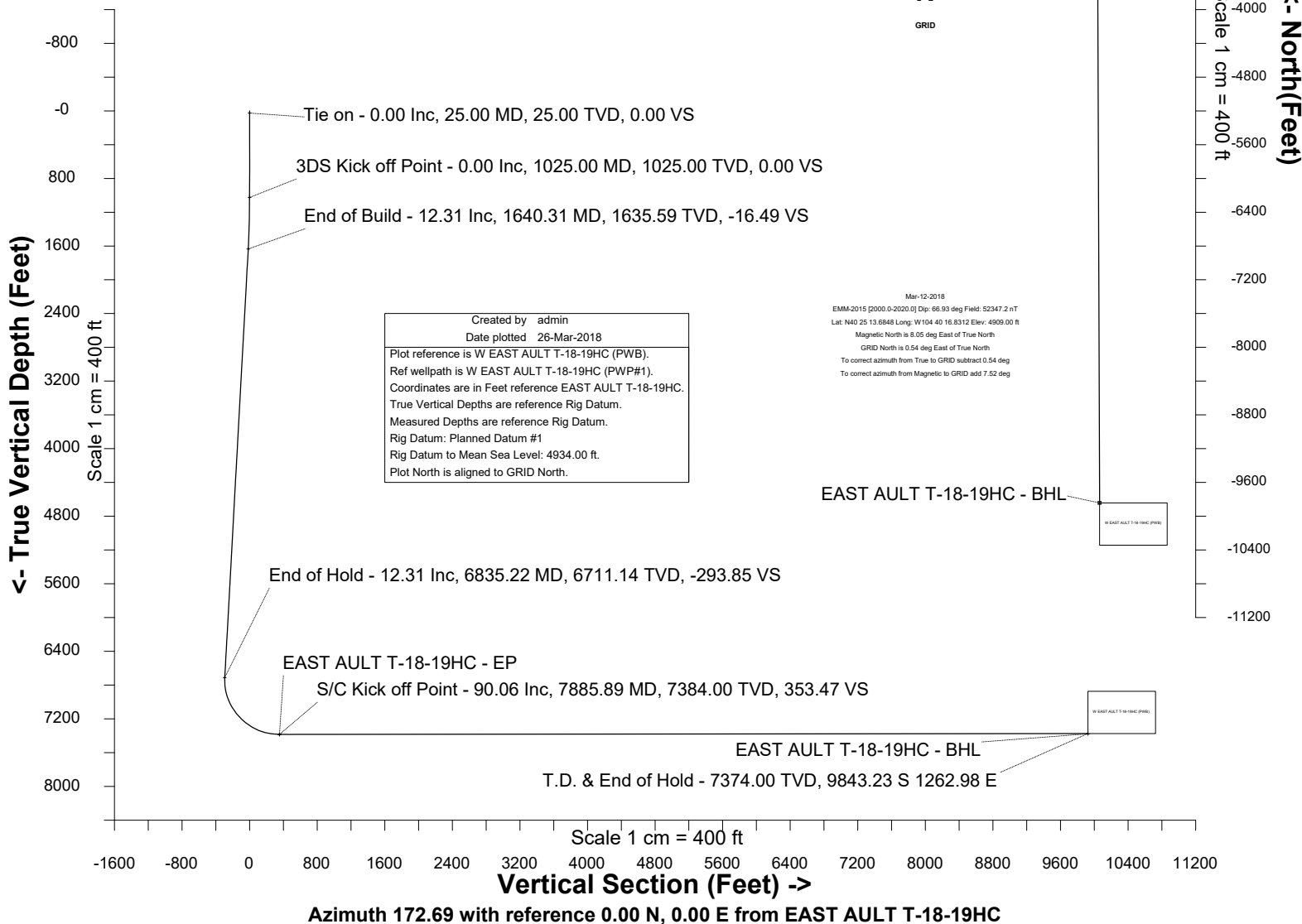
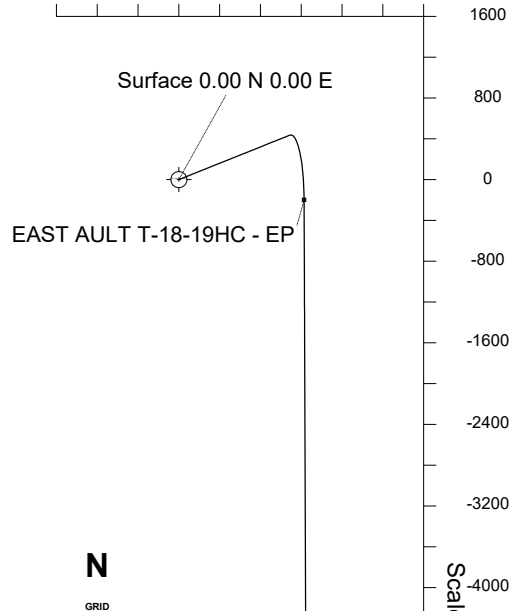
Location	Weld County, CO	Slot	EAST AULT T-18-19HC
Field	WATTENBERG	Well	W EAST AULT T-18-19HC
Installation	East Ault Pad	Wellbore	W EAST AULT T-18-19HC (PWB)

WELL PROFILE DATA

Point	MD	Inc	Azi	TVD	North	East	deg/100ft	V. Sect
Tie on	25.00	0.00	0.00	25.00	S 0.00	W 0.00		0.00
KOP	1025.00	0.00	68.18	1025.00	S 0.00	W 0.00	0.00	0.00
End of Build	1640.31	12.31	68.18	1635.59	N 24.47	E 61.11	2.00	-16.49
End of Hold	6835.22	12.31	68.18	6711.14	N 435.99	E 1089.01	0.00	-293.85
Target EAST A...C - EP	7885.89	90.06	179.79	7384.00	S 198.81	E 1227.93	9.00	353.47
T.D. & Target EAS...BHL	17530.37	90.06	179.79	7374.00	S 9843.23	E 1262.98	0.00	9923.92

East (Feet) ->

-800 0 800 1600 2400
Scale 1 cm = 400 ft





SYSDRILL
Well Design Combined Report
Wellbore: W EAST AULT T-18-19HC (PWB)



Wellhead Details

Name	Latitude	Longitude	Northing	Easting	North	East	Slot Elevation Above Ground
EAST AULT T-18-19HC	40.58167200	-104.70439400	1455735.7376	3220987.7315	58643.27N	9729.46W	0.00

Declination

Date	Source	Time
Mar-12-2018	EMM-2015 [2000.0-2020.0]	20:03

Installation Details

Name	Installation Position (Latitude)	Installation Position (Longitude)	Northing	Easting	Coord System Name	North Alignment
East Ault Pad	40.42046800	-104.67134200	1397094.8569	3230716.7970	CO83-NF on NORTH AMERICAN DATUM 1983 datum	Grid

Summary Wellpath

MD[ft]	Inc[deg]	Azi[deg]	TVD[ft]	North[ft]	East[ft]	Dogleg [deg/100ft]	Vertical Section[ft]	Northing	Easting
25.00	0.00	0.000	25.00	0.00N	0.00E		0.00	1455735.74	3220987.73
1025.00	0.00	68.180	1025.00	0.00N	0.00E	==>	0.00	1455735.74	3220987.73
1640.31	12.31	68.180	1635.59	24.47N	61.11E	2.00	-16.49	1455760.20	3221048.84
6835.22	12.31	68.180	6711.14	435.99N	1089.01E	==>	-293.85	1456171.72	3222076.71
7885.89	90.06	179.790	7384.00	198.81S	1227.93E	9.00	353.47	1455536.93	3222215.63
17530.37	90.06	179.790	7374.00	9843.23S	1262.98E	==>	9923.92	1445892.79	3222250.67

Interpolated Wellpath

MD[ft]	Inc[deg]	Azi[deg]	TVD[ft]	North[ft]	East[ft]	Dogleg [deg/100ft]	Vertical Section[ft]	All Station Comments
0.00	0.00	0.000	0.00	0.00N	0.00E		0.00	Rig Datum
25.00	0.00	0.000	25.00	0.00N	0.00E	==>	0.00	Slot Datum
100.00	0.00	0.000	100.00	0.00N	0.00E	==>	0.00	
200.00	0.00	0.000	200.00	0.00N	0.00E	==>	0.00	
300.00	0.00	0.000	300.00	0.00N	0.00E	==>	0.00	
400.00	0.00	0.000	400.00	0.00N	0.00E	==>	0.00	
500.00	0.00	0.000	500.00	0.00N	0.00E	==>	0.00	
600.00	0.00	0.000	600.00	0.00N	0.00E	==>	0.00	
700.00	0.00	0.000	700.00	0.00N	0.00E	==>	0.00	
800.00	0.00	0.000	800.00	0.00N	0.00E	==>	0.00	
900.00	0.00	0.000	900.00	0.00N	0.00E	==>	0.00	
1000.00	0.00	0.000	1000.00	0.00N	0.00E	==>	0.00	
1100.00	1.50	68.180	1099.99	0.36N	0.91E	2.00	-0.25	
1200.00	3.50	68.180	1199.89	1.99N	4.96E	2.00	-1.34	
1300.00	5.50	68.180	1299.58	4.90N	12.24E	2.00	-3.30	
1400.00	7.50	68.180	1398.93	9.11N	22.75E	2.00	-6.14	
1500.00	9.50	68.180	1497.83	14.60N	36.47E	2.00	-9.84	
1600.00	11.50	68.180	1596.15	21.38N	53.39E	2.00	-14.41	
1700.00	12.31	68.180	1693.91	29.19N	72.92E	==>	-19.68	
1800.00	12.31	68.180	1791.61	37.12N	92.71E	==>	-25.02	
1900.00	12.31	68.180	1889.31	45.04N	112.49E	==>	-30.35	
2000.00	12.31	68.180	1987.02	52.96N	132.28E	==>	-35.69	
2100.00	12.31	68.180	2084.72	60.88N	152.07E	==>	-41.03	
2200.00	12.31	68.180	2182.42	68.80N	171.85E	==>	-46.37	
2300.00	12.31	68.180	2280.12	76.72N	191.64E	==>	-51.71	
2400.00	12.31	68.180	2377.82	84.65N	211.43E	==>	-57.05	
2500.00	12.31	68.180	2475.53	92.57N	231.21E	==>	-62.39	
2600.00	12.31	68.180	2573.23	100.49N	251.00E	==>	-67.73	
2700.00	12.31	68.180	2670.93	108.41N	270.79E	==>	-73.07	
2800.00	12.31	68.180	2768.63	116.33N	290.57E	==>	-78.41	
2900.00	12.31	68.180	2866.34	124.25N	310.36E	==>	-83.75	
3000.00	12.31	68.180	2964.04	132.18N	330.15E	==>	-89.08	

All data is in Feet unless otherwise stated
Coordinates are from Slot MD's are from Rig and TVD's are from Rig (Planned Datum #1 4934.0ft above Mean Sea Level)
Vertical Section is from 0.00N 0.00E on azimuth 172.690 degrees
Bottom hole distance is 9923.92 Feet on azimuth 172.69 degrees from Wellhead
Calculation method uses Minimum Curvature method
Prepared by Microsoft
Date Printed: 26-Mar-2018



SYS DRILL
Well Design Combined Report
Wellbore: W EAST AULT T-18-19HC (PWB)



Interpolated Wellpath								
MD[ft]	Inc[deg]	Azi[deg]	TVD[ft]	North[ft]	East[ft]	Dogleg [deg/100ft]	Vertical Section[ft]	All Station Comments
3100.00	12.31	68.180	3061.74	140.10N	349.93E	==>	-94.42	
3200.00	12.31	68.180	3159.44	148.02N	369.72E	==>	-99.76	
3300.00	12.31	68.180	3257.14	155.94N	389.51E	==>	-105.10	
3400.00	12.31	68.180	3354.85	163.86N	409.29E	==>	-110.44	
3500.00	12.31	68.180	3452.55	171.78N	429.08E	==>	-115.78	
3600.00	12.31	68.180	3550.25	179.71N	448.87E	==>	-121.12	
3700.00	12.31	68.180	3647.95	187.63N	468.65E	==>	-126.46	
3800.00	12.31	68.180	3745.66	195.55N	488.44E	==>	-131.80	
3900.00	12.31	68.180	3843.36	203.47N	508.23E	==>	-137.14	
4000.00	12.31	68.180	3941.06	211.39N	528.01E	==>	-142.48	
4100.00	12.31	68.180	4038.76	219.31N	547.80E	==>	-147.82	
4200.00	12.31	68.180	4136.47	227.24N	567.59E	==>	-153.15	
4300.00	12.31	68.180	4234.17	235.16N	587.37E	==>	-158.49	
4400.00	12.31	68.180	4331.87	243.08N	607.16E	==>	-163.83	
4500.00	12.31	68.180	4429.57	251.00N	626.95E	==>	-169.17	
4600.00	12.31	68.180	4527.27	258.92N	646.73E	==>	-174.51	
4700.00	12.31	68.180	4624.98	266.85N	666.52E	==>	-179.85	
4800.00	12.31	68.180	4722.68	274.77N	686.31E	==>	-185.19	
4900.00	12.31	68.180	4820.38	282.69N	706.09E	==>	-190.53	
5000.00	12.31	68.180	4918.08	290.61N	725.88E	==>	-195.87	
5100.00	12.31	68.180	5015.79	298.53N	745.67E	==>	-201.21	
5200.00	12.31	68.180	5113.49	306.45N	765.45E	==>	-206.55	
5300.00	12.31	68.180	5211.19	314.38N	785.24E	==>	-211.88	
5400.00	12.31	68.180	5308.89	322.30N	805.03E	==>	-217.22	
5500.00	12.31	68.180	5406.59	330.22N	824.81E	==>	-222.56	
5600.00	12.31	68.180	5504.30	338.14N	844.60E	==>	-227.90	
5700.00	12.31	68.180	5602.00	346.06N	864.39E	==>	-233.24	
5800.00	12.31	68.180	5699.70	353.98N	884.17E	==>	-238.58	
5900.00	12.31	68.180	5797.40	361.91N	903.96E	==>	-243.92	
6000.00	12.31	68.180	5895.11	369.83N	923.75E	==>	-249.26	
6100.00	12.31	68.180	5992.81	377.75N	943.53E	==>	-254.60	
6200.00	12.31	68.180	6090.51	385.67N	963.32E	==>	-259.94	
6300.00	12.31	68.180	6188.21	393.59N	983.11E	==>	-265.28	
6400.00	12.31	68.180	6285.92	401.51N	1002.89E	==>	-270.61	
6500.00	12.31	68.180	6383.62	409.44N	1022.68E	==>	-275.95	
6600.00	12.31	68.180	6481.32	417.36N	1042.47E	==>	-281.29	
6700.00	12.31	68.180	6579.02	425.28N	1062.25E	==>	-286.63	
6800.00	12.31	68.180	6676.72	433.20N	1082.04E	==>	-291.97	
6900.00	11.54	96.440	6774.57	437.83N	1101.87E	9.00	-294.04	
7000.00	15.39	132.300	6871.97	427.76N	1121.66E	9.00	-281.53	
7100.00	22.36	150.240	6966.61	402.26N	1140.96E	9.00	-253.79	
7200.00	30.38	159.540	7056.17	361.97N	1159.28E	9.00	-211.49	
7300.00	38.80	165.170	7138.43	307.88N	1176.17E	9.00	-155.69	
7400.00	47.41	169.040	7211.38	241.31N	1191.22E	9.00	-87.75	
7500.00	56.12	171.950	7273.22	163.91N	1204.06E	9.00	-9.34	
7600.00	64.88	174.320	7322.42	77.58N	1214.38E	9.00	77.60	
7700.00	73.67	176.370	7357.78	15.54S	1221.91E	9.00	170.92	
7800.00	82.48	178.250	7378.42	113.18S	1226.47E	9.00	268.35	
7900.00	90.06	179.790	7383.99	212.92S	1227.98E	==>	367.47	
8000.00	90.06	179.790	7383.88	312.92S	1228.34E	==>	466.70	
8100.00	90.06	179.790	7383.78	412.92S	1228.71E	==>	565.93	
8200.00	90.06	179.790	7383.67	512.92S	1229.07E	==>	665.16	
8300.00	90.06	179.790	7383.57	612.92S	1229.43E	==>	764.40	
8400.00	90.06	179.790	7383.47	712.92S	1229.80E	==>	863.63	
8500.00	90.06	179.790	7383.36	812.91S	1230.16E	==>	962.86	
8600.00	90.06	179.790	7383.26	912.91S	1230.52E	==>	1062.09	
8700.00	90.06	179.790	7383.16	1012.91S	1230.89E	==>	1161.33	
8800.00	90.06	179.790	7383.05	1112.91S	1231.25E	==>	1260.56	
8900.00	90.06	179.790	7382.95	1212.91S	1231.61E	==>	1359.79	

All data is in Feet unless otherwise stated
Coordinates are from Slot MD's are from Rig and TVD's are from Rig (Planned Datum #1 4934.0ft above Mean Sea Level)
Vertical Section is from 0.00N 0.00E on azimuth 172.690 degrees
Bottom hole distance is 9923.92 Feet on azimuth 172.69 degrees from Wellhead
Calculation method uses Minimum Curvature method
Prepared by Microsoft
Date Printed: 26-Mar-2018



SYSDRILL
Well Design Combined Report
Wellbore: W EAST AULT T-18-19HC (PWB)



Interpolated Wellpath								
MD[ft]	Inc[deg]	Azi[deg]	TVD[ft]	North[ft]	East[ft]	Dogleg [deg/100ft]	Vertical Section[ft]	All Station Comments
9000.00	90.06	179.790	7382.84	1312.91S	1231.98E	==>	1459.02	
9100.00	90.06	179.790	7382.74	1412.91S	1232.34E	==>	1558.26	
9200.00	90.06	179.790	7382.64	1512.91S	1232.70E	==>	1657.49	
9300.00	90.06	179.790	7382.53	1612.91S	1233.07E	==>	1756.72	
9400.00	90.06	179.790	7382.43	1712.91S	1233.43E	==>	1855.95	
9500.00	90.06	179.790	7382.33	1812.91S	1233.79E	==>	1955.19	
9600.00	90.06	179.790	7382.22	1912.91S	1234.16E	==>	2054.42	
9700.00	90.06	179.790	7382.12	2012.91S	1234.52E	==>	2153.65	
9800.00	90.06	179.790	7382.02	2112.91S	1234.88E	==>	2252.88	
9900.00	90.06	179.790	7381.91	2212.90S	1235.25E	==>	2352.12	
10000.00	90.06	179.790	7381.81	2312.90S	1235.61E	==>	2451.35	
10100.00	90.06	179.790	7381.70	2412.90S	1235.97E	==>	2550.58	
10200.00	90.06	179.790	7381.60	2512.90S	1236.34E	==>	2649.81	
10300.00	90.06	179.790	7381.50	2612.90S	1236.70E	==>	2749.05	
10400.00	90.06	179.790	7381.39	2712.90S	1237.06E	==>	2848.28	
10500.00	90.06	179.790	7381.29	2812.90S	1237.43E	==>	2947.51	
10600.00	90.06	179.790	7381.19	2912.90S	1237.79E	==>	3046.74	
10700.00	90.06	179.790	7381.08	3012.90S	1238.16E	==>	3145.97	
10800.00	90.06	179.790	7380.98	3112.90S	1238.52E	==>	3245.21	
10900.00	90.06	179.790	7380.87	3212.90S	1238.88E	==>	3344.44	
11000.00	90.06	179.790	7380.77	3312.90S	1239.25E	==>	3443.67	
11100.00	90.06	179.790	7380.67	3412.90S	1239.61E	==>	3542.90	
11200.00	90.06	179.790	7380.56	3512.90S	1239.97E	==>	3642.14	
11300.00	90.06	179.790	7380.46	3612.89S	1240.34E	==>	3741.37	
11400.00	90.06	179.790	7380.36	3712.89S	1240.70E	==>	3840.60	
11500.00	90.06	179.790	7380.25	3812.89S	1241.06E	==>	3939.83	
11600.00	90.06	179.790	7380.15	3912.89S	1241.43E	==>	4039.07	
11700.00	90.06	179.790	7380.05	4012.89S	1241.79E	==>	4138.30	
11800.00	90.06	179.790	7379.94	4112.89S	1242.15E	==>	4237.53	
11900.00	90.06	179.790	7379.84	4212.89S	1242.52E	==>	4336.76	
12000.00	90.06	179.790	7379.73	4312.89S	1242.88E	==>	4436.00	
12100.00	90.06	179.790	7379.63	4412.89S	1243.24E	==>	4535.23	
12200.00	90.06	179.790	7379.53	4512.89S	1243.61E	==>	4634.46	
12300.00	90.06	179.790	7379.42	4612.89S	1243.97E	==>	4733.69	
12400.00	90.06	179.790	7379.32	4712.89S	1244.33E	==>	4832.93	
12500.00	90.06	179.790	7379.22	4812.89S	1244.70E	==>	4932.16	
12600.00	90.06	179.790	7379.11	4912.89S	1245.06E	==>	5031.39	
12700.00	90.06	179.790	7379.01	5012.88S	1245.42E	==>	5130.62	
12800.00	90.06	179.790	7378.90	5112.88S	1245.79E	==>	5229.86	
12900.00	90.06	179.790	7378.80	5212.88S	1246.15E	==>	5329.09	
13000.00	90.06	179.790	7378.70	5312.88S	1246.51E	==>	5428.32	
13100.00	90.06	179.790	7378.59	5412.88S	1246.88E	==>	5527.55	
13200.00	90.06	179.790	7378.49	5512.88S	1247.24E	==>	5626.79	
13300.00	90.06	179.790	7378.39	5612.88S	1247.60E	==>	5726.02	
13400.00	90.06	179.790	7378.28	5712.88S	1247.97E	==>	5825.25	
13500.00	90.06	179.790	7378.18	5812.88S	1248.33E	==>	5924.48	
13600.00	90.06	179.790	7378.08	5912.88S	1248.69E	==>	6023.71	
13700.00	90.06	179.790	7377.97	6012.88S	1249.06E	==>	6122.95	
13800.00	90.06	179.790	7377.87	6112.88S	1249.42E	==>	6222.18	
13900.00	90.06	179.790	7377.76	6212.88S	1249.78E	==>	6321.41	
14000.00	90.06	179.790	7377.66	6312.88S	1250.15E	==>	6420.64	
14100.00	90.06	179.790	7377.56	6412.87S	1250.51E	==>	6519.88	
14200.00	90.06	179.790	7377.45	6512.87S	1250.87E	==>	6619.11	
14300.00	90.06	179.790	7377.35	6612.87S	1251.24E	==>	6718.34	
14400.00	90.06	179.790	7377.25	6712.87S	1251.60E	==>	6817.57	
14500.00	90.06	179.790	7377.14	6812.87S	1251.96E	==>	6916.81	
14600.00	90.06	179.790	7377.04	6912.87S	1252.33E	==>	7016.04	
14700.00	90.06	179.790	7376.93	7012.87S	1252.69E	==>	7115.27	
14800.00	90.06	179.790	7376.83	7112.87S	1253.05E	==>	7214.50	

All data is in Feet unless otherwise stated
Coordinates are from Slot MD's are from Rig and TVD's are from Rig (Planned Datum #1 4934.0ft above Mean Sea Level)
Vertical Section is from 0.00N 0.00E on azimuth 172.690 degrees
Bottom hole distance is 9923.92 Feet on azimuth 172.69 degrees from Wellhead
Calculation method uses Minimum Curvature method
Prepared by Microsoft
Date Printed: 26-Mar-2018



SYS DRILL
Well Design Combined Report
Wellbore: W EAST AULT T-18-19HC (PWB)



Interpolated Wellpath								
MD[ft]	Inc[deg]	Azi[deg]	TVD[ft]	North[ft]	East[ft]	Dogleg [deg/100ft]	Vertical Section[ft]	All Station Comments
14900.00	90.06	179.790	7376.73	7212.87S	1253.42E	==>	7313.74	
15000.00	90.06	179.790	7376.62	7312.87S	1253.78E	==>	7412.97	
15100.00	90.06	179.790	7376.52	7412.87S	1254.14E	==>	7512.20	
15200.00	90.06	179.790	7376.42	7512.87S	1254.51E	==>	7611.43	
15300.00	90.06	179.790	7376.31	7612.87S	1254.87E	==>	7710.67	
15400.00	90.06	179.790	7376.21	7712.87S	1255.23E	==>	7809.90	
15500.00	90.06	179.790	7376.11	7812.86S	1255.60E	==>	7909.13	
15600.00	90.06	179.790	7376.00	7912.86S	1255.96E	==>	8008.36	
15700.00	90.06	179.790	7375.90	8012.86S	1256.32E	==>	8107.60	
15800.00	90.06	179.790	7375.79	8112.86S	1256.69E	==>	8206.83	
15900.00	90.06	179.790	7375.69	8212.86S	1257.05E	==>	8306.06	
16000.00	90.06	179.790	7375.59	8312.86S	1257.42E	==>	8405.29	
16100.00	90.06	179.790	7375.48	8412.86S	1257.78E	==>	8504.52	
16200.00	90.06	179.790	7375.38	8512.86S	1258.14E	==>	8603.76	
16300.00	90.06	179.790	7375.28	8612.86S	1258.51E	==>	8702.99	
16400.00	90.06	179.790	7375.17	8712.86S	1258.87E	==>	8802.22	
16500.00	90.06	179.790	7375.07	8812.86S	1259.23E	==>	8901.45	
16600.00	90.06	179.790	7374.96	8912.86S	1259.60E	==>	9000.69	
16700.00	90.06	179.790	7374.86	9012.86S	1259.96E	==>	9099.92	
16800.00	90.06	179.790	7374.76	9112.86S	1260.32E	==>	9199.15	
16900.00	90.06	179.790	7374.65	9212.85S	1260.69E	==>	9298.38	
17000.00	90.06	179.790	7374.55	9312.85S	1261.05E	==>	9397.62	
17100.00	90.06	179.790	7374.45	9412.85S	1261.41E	==>	9496.85	
17200.00	90.06	179.790	7374.34	9512.85S	1261.78E	==>	9596.08	
17300.00	90.06	179.790	7374.24	9612.85S	1262.14E	==>	9695.31	
17400.00	90.06	179.790	7374.14	9712.85S	1262.50E	==>	9794.55	
17500.00	90.06	179.790	7374.03	9812.85S	1262.87E	==>	9893.78	
17530.37	90.06	179.790	7374.00	9843.23S	1262.98E	==>	9923.92	

All data is in Feet unless otherwise stated
Coordinates are from Slot MD's are from Rig and TVD's are from Rig (Planned Datum #1 4934.0ft above Mean Sea Level)
Vertical Section is from 0.00N 0.00E on azimuth 172.690 degrees
Bottom hole distance is 9923.92 Feet on azimuth 172.69 degrees from Wellhead
Calculation method uses Minimum Curvature method
Prepared by Microsoft
Date Printed: 26-Mar-2018



SYS DRILL
Well Design Combined Report
Wellbore: W EAST AULT T-18-19HC (PWB)



Targets							
Name	North[ft]	East[ft]	TVD[ft]	Latitude	Longitude	Northing	Easting
EAST AULT T-18-19HC - BHL	9843.23S	1262.98E	7374.00	40.55462400	-104.70016700	1445892.79	3222250.67
EAST AULT T-18-19HC - EP	198.81S	1227.93E	7384.00	40.58109600	-104.69998000	1455536.93	3222215.63

Survey Tool Program					
Reference	Survey Name	MD[ft]	TVD[ft]	Survey Tool	Error Model
620331	Planned	1500.00	1497.83	WdW Rate Gyro	Standard
620330	Planned	17530.37	7374.00	ISCWSA MWD	Rev 4 + SAG + FLT

Notes