

Location:	COLORADO	Slot:	SLOT#17 STATE ANTELOPE 14-2-14XRNB (778'FSL & 811'FWL, SEC.02)
Field:	WELD COUNTY	Well:	STATE ANTELOPE 14-2-14XRNB
Facility:	SEC.02-T5N-R62W	Wellbore:	STATE ANTELOPE 14-2-14XRNB PWB

Location:	COLORADO	Slot:	SLOT#17 STATE ANTELOPE 14-2-14XRLNB (778'FSL & 811'FWL, SEC.02)
Field:	WELD COUNTY	Well:	STATE ANTELOPE 14-2-14XRLNB
Facility:	SEC.02-T5N-R62W	Wellbore:	STATE ANTELOPE 14-2-14XRLNB PWB

Plot reference wellpath is STATE ANTELOPE 14-2-14XRLNB PWP (REV-A.0)

[illegible]

True vertical depths are referenced to RIG (17'KB) (RKB)

Measured depths are referenced to RIG (17KB) (RKB)

RIG (17KB) (RKB) to Mean Sea Level: 4641 feet

Mean Sea Level to Mud line (At Slot: SLO

Coordinates are in feet referenced to Slot

	Database: Denver
--	------------------

Facility Name				Grid East (US ft)	Grid North (US ft)	Latitude	Longitude
SEC.02-TSN-R62W				3335087.552	1399678.056	40°25'27.372"N	104°17'47.004"W
Slot	Local N (ft)	Local E (ft)	Grid East (US ft)	Grid North (US ft)	Latitude	Longitude	
SLOT#17 STATE ANTELOPE 14-2-14XRNLB (77#FSL & 811°FWL SEC.02)	-21.05	-200.46	3334887.400	1399652.290	40°25'27.164"N	104°17'49.596"W	
RIG (17Kb) (R6b) to Mud line (At Slot: SLOT#17 STATE ANTELOPE 14-2-14XRNLB (77#FSL & 811°FWL SEC.02))						4641ft	
Mean Sea Level to Mud line (At Slot: SLOT#17 STATE ANTELOPE 14-2-14XRNLB (77#FSL & 811°FWL SEC.02))						0ft	
RIG (17Kb) (R6b) to Mean Sea Level						4641ft	

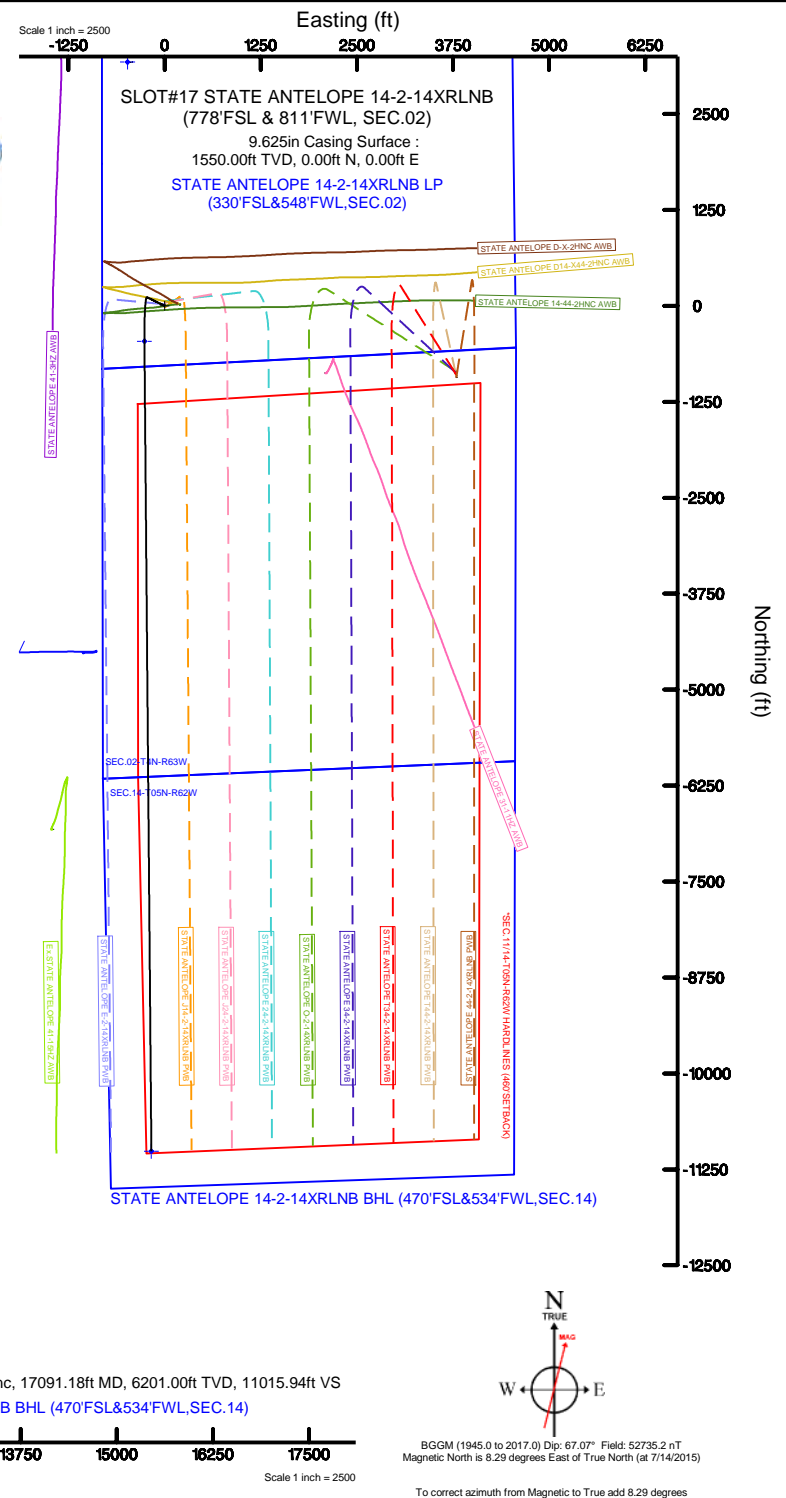
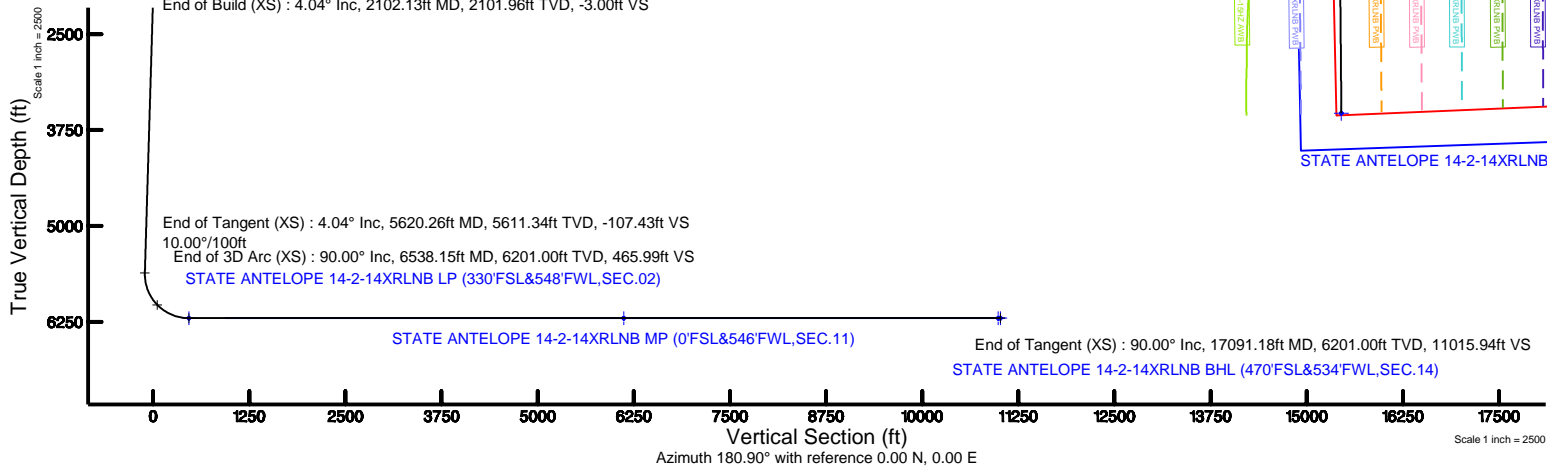
Design Comment	MD (ft)	Inc (°)	Az (°)	TVD (ft)	Local N (ft)	Local E (ft)	DLS (°/100ft)	VS (ft)
Tie On	17.00	0.000	295.796	17.00	0.00	0.00	0.00	0.00
End of Tangent	1900.00	0.000	295.796	1900.00	0.00	0.00	0.00	0.00
End of Build (XS)	2102.13	4.043	295.796	2101.96	3.10	-6.42	2.00	-3.00
End of Tangent (XS)	5620.26	4.043	295.796	5611.34	111.03	-229.72	0.00	-107.43
End of 3D Arc (XS)	6538.15	90.000	179.511	6201.00	-461.94	-262.20	10.00	465.99
End of Tangent (XS)	17091.18	90.000	179.511	6201.00	-11014.60	-172.19	0.00	11015.94

Name	Start MD (ft)	End MD (ft)	Interval (ft)	Start TVD (ft)	End TVD (ft)	Start Local N (ft)	Start Local E (ft)	End Local N (ft)	End Local E (ft)	Wellbore
9.625in Casing Surface	17.00	1550.00	1533.00	17.00	1550.00	0.00	0.00	0.00	0.00	STATE ANTELOPE 14-2-14XRNB PWB
8.5in Open Hole	1550.00	17091.18	15541.18	1550.00	6201.00	0.00	0.00	-11014.60	-172.19	STATE ANTELOPE 14-2-14XRNB PWB

Start MD (ft)	End MD (ft)	Tool	Model	Log Name/Comment	Wellbore
17.00	1550.00	BHI NavTrak	Custom BHI NavTrak (Standard Rotating+Axial Corr) (Rockies 0.03Gt model)		STATE ANTELOPE 14-2-14XR/LNB PWB
1550.00	17127.37	BHI AutoTrak Curve	Custom BHI AutoTrak Curve (Axial Corr, Short spacing) (Rockies 0.03Gt model)		STATE ANTELOPE 14-2-14XR/LNB PWB

MD (ft)	Inc (°)	Az (°)	TVD(ft)	Local N (ft)	Local E (ft)	Grid East (US ft)	Grid North (US ft)	Latitude	Longitude
17091.18	90.000	179.511	6201.00	-11014.60	-172.19	3334864.63	1388636.82	40°23'38.322"N	104°17'51.821"W

End of Build (XS) : 4.04° Inc, 2102.13ft MD, 2101.96ft TVD, -3.00ft VS





Planned Wellpath Report

STATE ANTELOPE 14-2-14XRLNB PWP (REV-A.0)

Page 1 of 10



REFERENCE WELLPATH IDENTIFICATION

Operator	BONANZA CREEK OIL COMPANY	Slot	SLOT#17 STATE ANTELOPE 14-2-14XRLNB (778'FSL & 811'FWL, SEC.02)
Area	COLORADO	Well	STATE ANTELOPE 14-2-14XRLNB
Field	WELD COUNTY	Wellbore	STATE ANTELOPE 14-2-14XRLNB PWB
Facility	SEC.02-T5N-R62W		

REPORT SETUP INFORMATION

Projection System	NAD83 / Lambert Colorado SP, Northern Zone (501), US feet	Software System	WellArchitect® 5.0
North Reference	True	User	Ingmjmr
Scale	0.999961	Report Generated	12/1/2017 at 10:41:04 AM
Convergence at slot	0.78° East	Database/Source file	Denver/STATE_ANTELOPE_14-2-14XRLNB_PWP__REV-A.0_.xml

WELLPATH LOCATION

	Local coordinates		Grid coordinates		Geographic coordinates	
	North[ft]	East[ft]	Easting[US ft]	Northing[US ft]	Latitude	Longitude
Slot Location	-21.05	-200.46	3334887.40	1399652.29	40°25'27.164"N	104°17'49.596"W
Facility Reference Pt			3335087.55	1399676.06	40°25'27.372"N	104°17'47.004"W
Field Reference Pt			3224525.77	1254425.87	40°01'44.400"N	104°41'53.556"W

WELLPATH DATUM

Calculation method	Minimum curvature	RIG (17'KB) (RKB) to Facility Vertical Datum	4641.00ft
Horizontal Reference Pt	Slot	RIG (17'KB) (RKB) to Mean Sea Level	4641.00ft
Vertical Reference Pt	RIG (17'KB) (RKB)	RIG (17'KB) (RKB) to Mud Line at Slot (SLOT#17 STATE ANTELOPE 14-2-14XRLNB (778'FSL & 811'FWL, SEC.02))	4641.00ft
MD Reference Pt	RIG (17'KB) (RKB)	Section Origin	N 0.00, E 0.00 ft
Field Vertical Reference	Mean Sea Level	Section Azimuth	180.90°



Planned Wellpath Report

STATE ANTELOPE 14-2-14XRLNB PWP (REV-A.0)

Page 2 of 10



REFERENCE WELLPATH IDENTIFICATION			
Operator	BONANZA CREEK OIL COMPANY	Slot	SLOT#17 STATE ANTELOPE 14-2-14XRLNB (778'FSL & 811'FWL, SEC.02)
Area	COLORADO	Well	STATE ANTELOPE 14-2-14XRLNB
Field	WELD COUNTY	Wellbore	STATE ANTELOPE 14-2-14XRLNB PWB
Facility	SEC.02-T5N-R62W		

WELLPATH DATA (177 stations) † = interpolated/extrapolated station										
MD [ft]	Inclination [°]	Azimuth [°]	TVD [ft]	Vert Sect [ft]	North [ft]	East [ft]	Latitude	Longitude	DLS [°/100ft]	Comments
0.00†	0.000	295.796	0.00	0.00	0.00	0.00	40°25'27.164"N	104°17'49.596"W	0.00	
17.00	0.000	295.796	17.00	0.00	0.00	0.00	40°25'27.164"N	104°17'49.596"W	0.00	Tie On
117.00†	0.000	295.796	117.00	0.00	0.00	0.00	40°25'27.164"N	104°17'49.596"W	0.00	
217.00†	0.000	295.796	217.00	0.00	0.00	0.00	40°25'27.164"N	104°17'49.596"W	0.00	
317.00†	0.000	295.796	317.00	0.00	0.00	0.00	40°25'27.164"N	104°17'49.596"W	0.00	
417.00†	0.000	295.796	417.00	0.00	0.00	0.00	40°25'27.164"N	104°17'49.596"W	0.00	
517.00†	0.000	295.796	517.00	0.00	0.00	0.00	40°25'27.164"N	104°17'49.596"W	0.00	
617.00†	0.000	295.796	617.00	0.00	0.00	0.00	40°25'27.164"N	104°17'49.596"W	0.00	
717.00†	0.000	295.796	717.00	0.00	0.00	0.00	40°25'27.164"N	104°17'49.596"W	0.00	
817.00†	0.000	295.796	817.00	0.00	0.00	0.00	40°25'27.164"N	104°17'49.596"W	0.00	
917.00†	0.000	295.796	917.00	0.00	0.00	0.00	40°25'27.164"N	104°17'49.596"W	0.00	
1017.00†	0.000	295.796	1017.00	0.00	0.00	0.00	40°25'27.164"N	104°17'49.596"W	0.00	
1117.00†	0.000	295.796	1117.00	0.00	0.00	0.00	40°25'27.164"N	104°17'49.596"W	0.00	
1217.00†	0.000	295.796	1217.00	0.00	0.00	0.00	40°25'27.164"N	104°17'49.596"W	0.00	
1317.00†	0.000	295.796	1317.00	0.00	0.00	0.00	40°25'27.164"N	104°17'49.596"W	0.00	
1417.00†	0.000	295.796	1417.00	0.00	0.00	0.00	40°25'27.164"N	104°17'49.596"W	0.00	
1517.00†	0.000	295.796	1517.00	0.00	0.00	0.00	40°25'27.164"N	104°17'49.596"W	0.00	
1617.00†	0.000	295.796	1617.00	0.00	0.00	0.00	40°25'27.164"N	104°17'49.596"W	0.00	
1717.00†	0.000	295.796	1717.00	0.00	0.00	0.00	40°25'27.164"N	104°17'49.596"W	0.00	
1817.00†	0.000	295.796	1817.00	0.00	0.00	0.00	40°25'27.164"N	104°17'49.596"W	0.00	
1900.00	0.000	295.796	1900.00	0.00	0.00	0.00	40°25'27.164"N	104°17'49.596"W	0.00	End of Tangent
1917.00†	0.340	295.796	1917.00	-0.02	0.02	-0.05	40°25'27.164"N	104°17'49.597"W	2.00	
2017.00†	2.340	295.796	2016.97	-1.01	1.04	-2.15	40°25'27.174"N	104°17'49.624"W	2.00	
2102.13	4.043	295.796	2101.96	-3.00	3.10	-6.42	40°25'27.195"N	104°17'49.679"W	2.00	End of Build (XS)
2117.00†	4.043	295.796	2116.80	-3.44	3.56	-7.36	40°25'27.199"N	104°17'49.691"W	0.00	
2217.00†	4.043	295.796	2216.55	-6.41	6.63	-13.71	40°25'27.229"N	104°17'49.773"W	0.00	
2317.00†	4.043	295.796	2316.30	-9.38	9.69	-20.06	40°25'27.260"N	104°17'49.855"W	0.00	
2417.00†	4.043	295.796	2416.05	-12.35	12.76	-26.40	40°25'27.290"N	104°17'49.937"W	0.00	
2517.00†	4.043	295.796	2515.80	-15.32	15.83	-32.75	40°25'27.320"N	104°17'50.019"W	0.00	
2617.00†	4.043	295.796	2615.55	-18.28	18.90	-39.10	40°25'27.351"N	104°17'50.102"W	0.00	



Planned Wellpath Report

STATE ANTELOPE 14-2-14XRLNB PWP (REV-A.0)

Page 3 of 10



REFERENCE WELLPATH IDENTIFICATION			
Operator	BONANZA CREEK OIL COMPANY	Slot	SLOT#17 STATE ANTELOPE 14-2-14XRLNB (778'FSL & 811'FWL, SEC.02)
Area	COLORADO	Well	STATE ANTELOPE 14-2-14XRLNB
Field	WELD COUNTY	Wellbore	STATE ANTELOPE 14-2-14XRLNB PWB
Facility	SEC.02-T5N-R62W		

WELLPATH DATA (177 stations) † = interpolated/extrapolated station										
MD [ft]	Inclination [°]	Azimuth [°]	TVD [ft]	Vert Sect [ft]	North [ft]	East [ft]	Latitude	Longitude	DLS [°/100ft]	Comments
2717.00†	4.043	295.796	2715.30	-21.25	21.97	-45.44	40°25'27.381"N	104°17'50.184"W	0.00	
2817.00†	4.043	295.796	2815.05	-24.22	25.03	-51.79	40°25'27.411"N	104°17'50.266"W	0.00	
2917.00†	4.043	295.796	2914.80	-27.19	28.10	-58.14	40°25'27.442"N	104°17'50.348"W	0.00	
3017.00†	4.043	295.796	3014.56	-30.16	31.17	-64.49	40°25'27.472"N	104°17'50.430"W	0.00	
3117.00†	4.043	295.796	3114.31	-33.13	34.24	-70.83	40°25'27.502"N	104°17'50.512"W	0.00	
3217.00†	4.043	295.796	3214.06	-36.09	37.30	-77.18	40°25'27.533"N	104°17'50.594"W	0.00	
3317.00†	4.043	295.796	3313.81	-39.06	40.37	-83.53	40°25'27.563"N	104°17'50.676"W	0.00	
3417.00†	4.043	295.796	3413.56	-42.03	43.44	-89.88	40°25'27.593"N	104°17'50.758"W	0.00	
3517.00†	4.043	295.796	3513.31	-45.00	46.51	-96.22	40°25'27.624"N	104°17'50.840"W	0.00	
3617.00†	4.043	295.796	3613.06	-47.97	49.58	-102.57	40°25'27.654"N	104°17'50.922"W	0.00	
3717.00†	4.043	295.796	3712.81	-50.93	52.64	-108.92	40°25'27.684"N	104°17'51.004"W	0.00	
3817.00†	4.043	295.796	3812.57	-53.90	55.71	-115.26	40°25'27.715"N	104°17'51.086"W	0.00	
3917.00†	4.043	295.796	3912.32	-56.87	58.78	-121.61	40°25'27.745"N	104°17'51.168"W	0.00	
4017.00†	4.043	295.796	4012.07	-59.84	61.85	-127.96	40°25'27.775"N	104°17'51.251"W	0.00	
4117.00†	4.043	295.796	4111.82	-62.81	64.91	-134.31	40°25'27.805"N	104°17'51.333"W	0.00	
4217.00†	4.043	295.796	4211.57	-65.78	67.98	-140.65	40°25'27.836"N	104°17'51.415"W	0.00	
4317.00†	4.043	295.796	4311.32	-68.74	71.05	-147.00	40°25'27.866"N	104°17'51.497"W	0.00	
4417.00†	4.043	295.796	4411.07	-71.71	74.12	-153.35	40°25'27.896"N	104°17'51.579"W	0.00	
4517.00†	4.043	295.796	4510.82	-74.68	77.19	-159.69	40°25'27.927"N	104°17'51.661"W	0.00	
4617.00†	4.043	295.796	4610.58	-77.65	80.25	-166.04	40°25'27.957"N	104°17'51.743"W	0.00	
4717.00†	4.043	295.796	4710.33	-80.62	83.32	-172.39	40°25'27.987"N	104°17'51.825"W	0.00	
4817.00†	4.043	295.796	4810.08	-83.59	86.39	-178.74	40°25'28.018"N	104°17'51.907"W	0.00	
4917.00†	4.043	295.796	4909.83	-86.55	89.46	-185.08	40°25'28.048"N	104°17'51.989"W	0.00	
5017.00†	4.043	295.796	5009.58	-89.52	92.53	-191.43	40°25'28.078"N	104°17'52.071"W	0.00	
5117.00†	4.043	295.796	5109.33	-92.49	95.59	-197.78	40°25'28.109"N	104°17'52.153"W	0.00	
5217.00†	4.043	295.796	5209.08	-95.46	98.66	-204.12	40°25'28.139"N	104°17'52.235"W	0.00	
5317.00†	4.043	295.796	5308.83	-98.43	101.73	-210.47	40°25'28.169"N	104°17'52.317"W	0.00	
5417.00†	4.043	295.796	5408.58	-101.39	104.80	-216.82	40°25'28.200"N	104°17'52.399"W	0.00	
5517.00†	4.043	295.796	5508.34	-104.36	107.86	-223.17	40°25'28.230"N	104°17'52.482"W	0.00	
5617.00†	4.043	295.796	5608.09	-107.33	110.93	-229.51	40°25'28.260"N	104°17'52.564"W	0.00	



Planned Wellpath Report

STATE ANTELOPE 14-2-14XRLNB PWP (REV-A.0)

Page 4 of 10



REFERENCE WELLPATH IDENTIFICATION			
Operator	BONANZA CREEK OIL COMPANY	Slot	SLOT#17 STATE ANTELOPE 14-2-14XRLNB (778'FSL & 811'FWL, SEC.02)
Area	COLORADO	Well	STATE ANTELOPE 14-2-14XRLNB
Field	WELD COUNTY	Wellbore	STATE ANTELOPE 14-2-14XRLNB PWB
Facility	SEC.02-T5N-R62W		

WELLPATH DATA (177 stations) † = interpolated/extrapolated station										
MD [ft]	Inclination [°]	Azimuth [°]	TVD [ft]	Vert Sect [ft]	North [ft]	East [ft]	Latitude	Longitude	DLS [°/100ft]	Comments
5620.26	4.043	295.796	5611.34	-107.43	111.03	-229.72	40°25'28.261"N	104°17'52.566"W	0.00	End of Tangent (XS)
5717.00†	8.674	204.053	5707.63	-102.14	105.84	-235.78	40°25'28.210"N	104°17'52.645"W	10.00	
5817.00†	18.237	190.599	5804.80	-79.73	83.52	-241.75	40°25'27.989"N	104°17'52.722"W	10.00	
5917.00†	28.101	186.327	5896.63	-40.76	44.63	-247.23	40°25'27.605"N	104°17'52.793"W	10.00	
6017.00†	38.032	184.158	5980.33	13.58	-9.64	-252.07	40°25'27.069"N	104°17'52.855"W	10.00	
6117.00†	47.989	182.783	6053.36	81.64	-77.64	-256.12	40°25'26.397"N	104°17'52.908"W	10.00	
6217.00†	57.957	181.784	6113.50	161.35	-157.31	-259.25	40°25'25.609"N	104°17'52.948"W	10.00	
6317.00†	67.932	180.983	6158.93	250.29	-246.23	-261.37	40°25'24.731"N	104°17'52.976"W	10.00	
6417.00†	77.910	180.289	6188.27	345.75	-341.69	-262.42	40°25'23.788"N	104°17'52.989"W	10.00	
6517.00†	87.889	179.645	6200.61	444.85	-440.80	-262.36	40°25'22.808"N	104°17'52.988"W	10.00	
6538.15	90.000	179.511	6201.00†	465.99	-461.94	-262.20	40°25'22.599"N	104°17'52.986"W	10.00	End of 3D Arc (XS)
6617.00†	90.000	179.511	6201.00	544.81	-540.79	-261.53	40°25'21.820"N	104°17'52.977"W	0.00	
6717.00†	90.000	179.511	6201.00	644.79	-640.79	-260.67	40°25'20.832"N	104°17'52.966"W	0.00	
6817.00†	90.000	179.511	6201.00	744.76	-740.79	-259.82	40°25'19.844"N	104°17'52.955"W	0.00	
6917.00†	90.000	179.511	6201.00	844.73	-840.78	-258.97	40°25'18.856"N	104°17'52.944"W	0.00	
7017.00†	90.000	179.511	6201.00	944.70	-940.78	-258.12	40°25'17.868"N	104°17'52.933"W	0.00	
7117.00†	90.000	179.511	6201.00	1044.67	-1040.77	-257.26	40°25'16.879"N	104°17'52.922"W	0.00	
7217.00†	90.000	179.511	6201.00	1144.64	-1140.77	-256.41	40°25'15.891"N	104°17'52.911"W	0.00	
7317.00†	90.000	179.511	6201.00	1244.61	-1240.77	-255.56	40°25'14.903"N	104°17'52.900"W	0.00	
7417.00†	90.000	179.511	6201.00	1344.58	-1340.76	-254.70	40°25'13.915"N	104°17'52.889"W	0.00	
7517.00†	90.000	179.511	6201.00	1444.55	-1440.76	-253.85	40°25'12.927"N	104°17'52.878"W	0.00	
7617.00†	90.000	179.511	6201.00	1544.52	-1540.76	-253.00	40°25'11.939"N	104°17'52.867"W	0.00	
7717.00†	90.000	179.511	6201.00	1644.49	-1640.75	-252.14	40°25'10.951"N	104°17'52.856"W	0.00	
7817.00†	90.000	179.511	6201.00	1744.46	-1740.75	-251.29	40°25'09.963"N	104°17'52.845"W	0.00	
7917.00†	90.000	179.511	6201.00	1844.43	-1840.75	-250.44	40°25'08.974"N	104°17'52.834"W	0.00	
8017.00†	90.000	179.511	6201.00	1944.41	-1940.74	-249.59	40°25'07.986"N	104°17'52.823"W	0.00	
8117.00†	90.000	179.511	6201.00	2044.38	-2040.74	-248.73	40°25'06.998"N	104°17'52.812"W	0.00	
8217.00†	90.000	179.511	6201.00	2144.35	-2140.73	-247.88	40°25'06.010"N	104°17'52.801"W	0.00	
8317.00†	90.000	179.511	6201.00	2244.32	-2240.73	-247.03	40°25'05.022"N	104°17'52.790"W	0.00	
8417.00†	90.000	179.511	6201.00	2344.29	-2340.73	-246.17	40°25'04.034"N	104°17'52.779"W	0.00	



Planned Wellpath Report

STATE ANTELOPE 14-2-14XRLNB PWP (REV-A.0)

Page 5 of 10



REFERENCE WELLPATH IDENTIFICATION			
Operator	BONANZA CREEK OIL COMPANY	Slot	SLOT#17 STATE ANTELOPE 14-2-14XRLNB (778'FSL & 811'FWL, SEC.02)
Area	COLORADO	Well	STATE ANTELOPE 14-2-14XRLNB
Field	WELD COUNTY	Wellbore	STATE ANTELOPE 14-2-14XRLNB PWB
Facility	SEC.02-T5N-R62W		

WELLPATH DATA (177 stations) † = interpolated/extrapolated station										
MD [ft]	Inclination [°]	Azimuth [°]	TVD [ft]	Vert Sect [ft]	North [ft]	East [ft]	Latitude	Longitude	DLS [°/100ft]	Comments
8517.00†	90.000	179.511	6201.00	2444.26	-2440.72	-245.32	40°25'03.046"N	104°17'52.768"W	0.00	
8617.00†	90.000	179.511	6201.00	2544.23	-2540.72	-244.47	40°25'02.058"N	104°17'52.757"W	0.00	
8717.00†	90.000	179.511	6201.00	2644.20	-2640.72	-243.62	40°25'01.069"N	104°17'52.746"W	0.00	
8817.00†	90.000	179.511	6201.00	2744.17	-2740.71	-242.76	40°25'00.081"N	104°17'52.735"W	0.00	
8917.00†	90.000	179.511	6201.00	2844.14	-2840.71	-241.91	40°24'59.093"N	104°17'52.724"W	0.00	
9017.00†	90.000	179.511	6201.00	2944.11	-2940.71	-241.06	40°24'58.105"N	104°17'52.713"W	0.00	
9117.00†	90.000	179.511	6201.00	3044.08	-3040.70	-240.20	40°24'57.117"N	104°17'52.701"W	0.00	
9217.00†	90.000	179.511	6201.00	3144.06	-3140.70	-239.35	40°24'56.129"N	104°17'52.690"W	0.00	
9317.00†	90.000	179.511	6201.00	3244.03	-3240.69	-238.50	40°24'55.141"N	104°17'52.679"W	0.00	
9417.00†	90.000	179.511	6201.00	3344.00	-3340.69	-237.65	40°24'54.153"N	104°17'52.668"W	0.00	
9517.00†	90.000	179.511	6201.00	3443.97	-3440.69	-236.79	40°24'53.164"N	104°17'52.657"W	0.00	
9617.00†	90.000	179.511	6201.00	3543.94	-3540.68	-235.94	40°24'52.176"N	104°17'52.646"W	0.00	
9717.00†	90.000	179.511	6201.00	3643.91	-3640.68	-235.09	40°24'51.188"N	104°17'52.635"W	0.00	
9817.00†	90.000	179.511	6201.00	3743.88	-3740.68	-234.23	40°24'50.200"N	104°17'52.624"W	0.00	
9917.00†	90.000	179.511	6201.00	3843.85	-3840.67	-233.38	40°24'49.212"N	104°17'52.613"W	0.00	
10017.00†	90.000	179.511	6201.00	3943.82	-3940.67	-232.53	40°24'48.224"N	104°17'52.602"W	0.00	
10117.00†	90.000	179.511	6201.00	4043.79	-4040.67	-231.68	40°24'47.236"N	104°17'52.591"W	0.00	
10217.00†	90.000	179.511	6201.00	4143.76	-4140.66	-230.82	40°24'46.248"N	104°17'52.580"W	0.00	
10317.00†	90.000	179.511	6201.00	4243.73	-4240.66	-229.97	40°24'45.259"N	104°17'52.569"W	0.00	
10417.00†	90.000	179.511	6201.00	4343.71	-4340.65	-229.12	40°24'44.271"N	104°17'52.558"W	0.00	
10517.00†	90.000	179.511	6201.00	4443.68	-4440.65	-228.26	40°24'43.283"N	104°17'52.547"W	0.00	
10617.00†	90.000	179.511	6201.00	4543.65	-4540.65	-227.41	40°24'42.295"N	104°17'52.536"W	0.00	
10717.00†	90.000	179.511	6201.00	4643.62	-4640.64	-226.56	40°24'41.307"N	104°17'52.525"W	0.00	
10817.00†	90.000	179.511	6201.00	4743.59	-4740.64	-225.71	40°24'40.319"N	104°17'52.514"W	0.00	
10917.00†	90.000	179.511	6201.00	4843.56	-4840.64	-224.85	40°24'39.331"N	104°17'52.503"W	0.00	
11017.00†	90.000	179.511	6201.00	4943.53	-4940.63	-224.00	40°24'38.343"N	104°17'52.492"W	0.00	
11117.00†	90.000	179.511	6201.00	5043.50	-5040.63	-223.15	40°24'37.354"N	104°17'52.481"W	0.00	
11217.00†	90.000	179.511	6201.00	5143.47	-5140.62	-222.29	40°24'36.366"N	104°17'52.470"W	0.00	
11317.00†	90.000	179.511	6201.00	5243.44	-5240.62	-221.44	40°24'35.378"N	104°17'52.459"W	0.00	
11417.00†	90.000	179.511	6201.00	5343.41	-5340.62	-220.59	40°24'34.390"N	104°17'52.448"W	0.00	



Planned Wellpath Report

STATE ANTELOPE 14-2-14XRLNB PWP (REV-A.0)

Page 6 of 10



REFERENCE WELLPATH IDENTIFICATION			
Operator	BONANZA CREEK OIL COMPANY	Slot	SLOT#17 STATE ANTELOPE 14-2-14XRLNB (778'FSL & 811'FWL, SEC.02)
Area	COLORADO	Well	STATE ANTELOPE 14-2-14XRLNB
Field	WELD COUNTY	Wellbore	STATE ANTELOPE 14-2-14XRLNB PWB
Facility	SEC.02-T5N-R62W		

WELLPATH DATA (177 stations) † = interpolated/extrapolated station										
MD [ft]	Inclination [°]	Azimuth [°]	TVD [ft]	Vert Sect [ft]	North [ft]	East [ft]	Latitude	Longitude	DLS [°/100ft]	Comments
11517.00†	90.000	179.511	6201.00	5443.38	-5440.61	-219.73	40°24'33.402"N	104°17'52.437"W	0.00	
11617.00†	90.000	179.511	6201.00	5543.35	-5540.61	-218.88	40°24'32.414"N	104°17'52.426"W	0.00	
11717.00†	90.000	179.511	6201.00	5643.33	-5640.61	-218.03	40°24'31.426"N	104°17'52.414"W	0.00	
11817.00†	90.000	179.511	6201.00	5743.30	-5740.60	-217.18	40°24'30.438"N	104°17'52.403"W	0.00	
11917.00†	90.000	179.511	6201.00	5843.27	-5840.60	-216.32	40°24'29.449"N	104°17'52.392"W	0.00	
12017.00†	90.000	179.511	6201.00	5943.24	-5940.60	-215.47	40°24'28.461"N	104°17'52.381"W	0.00	
12117.00†	90.000	179.511	6201.00	6043.21	-6040.59	-214.62	40°24'27.473"N	104°17'52.370"W	0.00	
12217.00†	90.000	179.511	6201.00	6143.18	-6140.59	-213.76	40°24'26.485"N	104°17'52.359"W	0.00	
12317.00†	90.000	179.511	6201.00	6243.15	-6240.58	-212.91	40°24'25.497"N	104°17'52.348"W	0.00	
12417.00†	90.000	179.511	6201.00	6343.12	-6340.58	-212.06	40°24'24.509"N	104°17'52.337"W	0.00	
12517.00†	90.000	179.511	6201.00	6443.09	-6440.58	-211.21	40°24'23.521"N	104°17'52.326"W	0.00	
12617.00†	90.000	179.511	6201.00	6543.06	-6540.57	-210.35	40°24'22.533"N	104°17'52.315"W	0.00	
12717.00†	90.000	179.511	6201.00	6643.03	-6640.57	-209.50	40°24'21.544"N	104°17'52.304"W	0.00	
12817.00†	90.000	179.511	6201.00	6743.00	-6740.57	-208.65	40°24'20.556"N	104°17'52.293"W	0.00	
12917.00†	90.000	179.511	6201.00	6842.98	-6840.56	-207.79	40°24'19.568"N	104°17'52.282"W	0.00	
13017.00†	90.000	179.511	6201.00	6942.95	-6940.56	-206.94	40°24'18.580"N	104°17'52.271"W	0.00	
13117.00†	90.000	179.511	6201.00	7042.92	-7040.56	-206.09	40°24'17.592"N	104°17'52.260"W	0.00	
13217.00†	90.000	179.511	6201.00	7142.89	-7140.55	-205.24	40°24'16.604"N	104°17'52.249"W	0.00	
13317.00†	90.000	179.511	6201.00	7242.86	-7240.55	-204.38	40°24'15.616"N	104°17'52.238"W	0.00	
13417.00†	90.000	179.511	6201.00	7342.83	-7340.54	-203.53	40°24'14.628"N	104°17'52.227"W	0.00	
13517.00†	90.000	179.511	6201.00	7442.80	-7440.54	-202.68	40°24'13.639"N	104°17'52.216"W	0.00	
13617.00†	90.000	179.511	6201.00	7542.77	-7540.54	-201.82	40°24'12.651"N	104°17'52.205"W	0.00	
13717.00†	90.000	179.511	6201.00	7642.74	-7640.53	-200.97	40°24'11.663"N	104°17'52.194"W	0.00	
13817.00†	90.000	179.511	6201.00	7742.71	-7740.53	-200.12	40°24'10.675"N	104°17'52.183"W	0.00	
13917.00†	90.000	179.511	6201.00	7842.68	-7840.53	-199.27	40°24'09.687"N	104°17'52.172"W	0.00	
14017.00†	90.000	179.511	6201.00	7942.65	-7940.52	-198.41	40°24'08.699"N	104°17'52.161"W	0.00	
14117.00†	90.000	179.511	6201.00	8042.63	-8040.52	-197.56	40°24'07.711"N	104°17'52.150"W	0.00	
14217.00†	90.000	179.511	6201.00	8142.60	-8140.52	-196.71	40°24'06.723"N	104°17'52.139"W	0.00	
14317.00†	90.000	179.511	6201.00	8242.57	-8240.51	-195.85	40°24'05.734"N	104°17'52.128"W	0.00	
14417.00†	90.000	179.511	6201.00	8342.54	-8340.51	-195.00	40°24'04.746"N	104°17'52.117"W	0.00	



Planned Wellpath Report

STATE ANTELOPE 14-2-14XRLNB PWP (REV-A.0)

Page 7 of 10



REFERENCE WELLPATH IDENTIFICATION			
Operator	BONANZA CREEK OIL COMPANY	Slot	SLOT#17 STATE ANTELOPE 14-2-14XRLNB (778'FSL & 811'FWL, SEC.02)
Area	COLORADO	Well	STATE ANTELOPE 14-2-14XRLNB
Field	WELD COUNTY	Wellbore	STATE ANTELOPE 14-2-14XRLNB PWB
Facility	SEC.02-T5N-R62W		

WELLPATH DATA (177 stations) † = interpolated/extrapolated station										
MD [ft]	Inclination [°]	Azimuth [°]	TVD [ft]	Vert Sect [ft]	North [ft]	East [ft]	Latitude	Longitude	DLS [°/100ft]	Comments
14517.00†	90.000	179.511	6201.00	8442.51	-8440.50	-194.15	40°24'03.758"N	104°17'52.105"W	0.00	
14617.00†	90.000	179.511	6201.00	8542.48	-8540.50	-193.30	40°24'02.770"N	104°17'52.094"W	0.00	
14717.00†	90.000	179.511	6201.00	8642.45	-8640.50	-192.44	40°24'01.782"N	104°17'52.083"W	0.00	
14817.00†	90.000	179.511	6201.00	8742.42	-8740.49	-191.59	40°24'00.794"N	104°17'52.072"W	0.00	
14917.00†	90.000	179.511	6201.00	8842.39	-8840.49	-190.74	40°23'59.806"N	104°17'52.061"W	0.00	
15017.00†	90.000	179.511	6201.00	8942.36	-8940.49	-189.88	40°23'58.817"N	104°17'52.050"W	0.00	
15117.00†	90.000	179.511	6201.00	9042.33	-9040.48	-189.03	40°23'57.829"N	104°17'52.039"W	0.00	
15217.00†	90.000	179.511	6201.00	9142.30	-9140.48	-188.18	40°23'56.841"N	104°17'52.028"W	0.00	
15317.00†	90.000	179.511	6201.00	9242.28	-9240.48	-187.32	40°23'55.853"N	104°17'52.017"W	0.00	
15417.00†	90.000	179.511	6201.00	9342.25	-9340.47	-186.47	40°23'54.865"N	104°17'52.006"W	0.00	
15517.00†	90.000	179.511	6201.00	9442.22	-9440.47	-185.62	40°23'53.877"N	104°17'51.995"W	0.00	
15617.00†	90.000	179.511	6201.00	9542.19	-9540.46	-184.77	40°23'52.889"N	104°17'51.984"W	0.00	
15717.00†	90.000	179.511	6201.00	9642.16	-9640.46	-183.91	40°23'51.901"N	104°17'51.973"W	0.00	
15817.00†	90.000	179.511	6201.00	9742.13	-9740.46	-183.06	40°23'50.912"N	104°17'51.962"W	0.00	
15917.00†	90.000	179.511	6201.00	9842.10	-9840.45	-182.21	40°23'49.924"N	104°17'51.951"W	0.00	
16017.00†	90.000	179.511	6201.00	9942.07	-9940.45	-181.35	40°23'48.936"N	104°17'51.940"W	0.00	
16117.00†	90.000	179.511	6201.00	10042.04	-10040.45	-180.50	40°23'47.948"N	104°17'51.929"W	0.00	
16217.00†	90.000	179.511	6201.00	10142.01	-10140.44	-179.65	40°23'46.960"N	104°17'51.918"W	0.00	
16317.00†	90.000	179.511	6201.00	10241.98	-10240.44	-178.80	40°23'45.972"N	104°17'51.907"W	0.00	
16417.00†	90.000	179.511	6201.00	10341.95	-10340.44	-177.94	40°23'44.984"N	104°17'51.896"W	0.00	
16517.00†	90.000	179.511	6201.00	10441.92	-10440.43	-177.09	40°23'43.996"N	104°17'51.885"W	0.00	
16617.00†	90.000	179.511	6201.00	10541.90	-10540.43	-176.24	40°23'43.007"N	104°17'51.874"W	0.00	
16717.00†	90.000	179.511	6201.00	10641.87	-10640.42	-175.38	40°23'42.019"N	104°17'51.863"W	0.00	
16817.00†	90.000	179.511	6201.00	10741.84	-10740.42	-174.53	40°23'41.031"N	104°17'51.852"W	0.00	
16917.00†	90.000	179.511	6201.00	10841.81	-10840.42	-173.68	40°23'40.043"N	104°17'51.841"W	0.00	
17017.00†	90.000	179.511	6201.00	10941.78	-10940.41	-172.83	40°23'39.055"N	104°17'51.830"W	0.00	
17091.18	90.000	179.511	6201.00 ²	11015.94	-11014.60	-172.19	40°23'38.322"N	104°17'51.821"W	0.00	End of Tangent (XS)



Planned Wellpath Report

STATE ANTELOPE 14-2-14XRLNB PWP (REV-A.0)

Page 8 of 10



REFERENCE WELLPATH IDENTIFICATION			
Operator	BONANZA CREEK OIL COMPANY	Slot	SLOT#17 STATE ANTELOPE 14-2-14XRLNB (778'FSL & 811'FWL, SEC.02)
Area	COLORADO	Well	STATE ANTELOPE 14-2-14XRLNB
Field	WELD COUNTY	Wellbore	STATE ANTELOPE 14-2-14XRLNB PWB
Facility	SEC.02-T5N-R62W		

HOLE & CASING SECTIONS									
- Ref Wellbore: STATE ANTELOPE 14-2-14XRLNB PWB					Ref Wellpath: STATE ANTELOPE 14-2-14XRLNB PWP (REV-A.0)				
String/Diameter	Start MD [ft]	End MD [ft]	Interval [ft]	Start TVD [ft]	End TVD [ft]	Start N/S [ft]	Start E/W [ft]	End N/S [ft]	End E/W [ft]
9.625in Casing Surface	17.00	1550.00	1533.00	17.00	1550.00	0.00	0.00	0.00	0.00
8.5in Open Hole	1550.00	17091.18	15541.18	1550.00	6201.00	0.00	0.00	-11014.60	-172.19

TARGETS									
Name	MD [ft]	TVD [ft]	North [ft]	East [ft]	Grid East [US ft]	Grid North [US ft]	Latitude	Longitude	Shape
*SEC.02-T05N-R62W		17.00	3174.19	-481.30	3334363.11	1402819.53	40°25'58.530"N	104°17'55.820"W	polygon
*SEC.11-T05N-R62W		17.00	-10996.37	350.58	3335387.09	1388662.13	40°23'38.502"N	104°17'45.065"W	polygon
*SEC.14-T05N-R62W		17.00	-10996.37	350.58	3335387.09	1388662.13	40°23'38.502"N	104°17'45.065"W	polygon
*SEC.11/14-T05N-R62W HARDLINES (460'SETBACK)		6201.00	-10996.37	350.58	3335387.09	1388662.13	40°23'38.502"N	104°17'45.065"W	polygon
2) STATE ANTELOPE 14-2-14XRLNB BHL (470'FSL&534'FWL,SEC.14)	17091.18	6201.00	-11014.60	-172.19	3334864.63	1388636.82	40°23'38.322"N	104°17'51.821"W	point
1) STATE ANTELOPE 14-2-14XRLNB LP (330'FSL&548'FWL,SEC.02)	6538.15	6201.00	-461.94	-262.20	3334631.50	1399186.85	40°25'22.599"N	104°17'52.986"W	point
STATE ANTELOPE 14-2-14XRLNB MP (0'FSL&546'FWL,SEC.11)		6201.00	-6115.08	-257.18	3334713.20	1393534.53	40°24'26.737"N	104°17'52.920"W	point



Planned Wellpath Report

STATE ANTELOPE 14-2-14XRLNB PWP (REV-A.0)

Page 9 of 10



REFERENCE WELLPATH IDENTIFICATION			
Operator	BONANZA CREEK OIL COMPANY	Slot	SLOT#17 STATE ANTELOPE 14-2-14XRLNB (778'FSL & 811'FWL, SEC.02)
Area	COLORADO	Well	STATE ANTELOPE 14-2-14XRLNB
Field	WELD COUNTY	Wellbore	STATE ANTELOPE 14-2-14XRLNB PWB
Facility	SEC.02-T5N-R62W		

SURVEY PROGRAM - Ref Wellbore: STATE ANTELOPE 14-2-14XRLNB PWB Ref Wellpath: STATE ANTELOPE 14-2-14XRLNB PWP (REV-A.0)				
Start MD [ft]	End MD [ft]	Positional Uncertainty Model	Log Name/Comment	Wellbore
17.00	1550.00	Custom BHI NaviTrak (Standard Rotating+Axial Corr) (Rockies 0.03Gt model)		STATE ANTELOPE 14-2-14XRLNB PWB
1550.00	17127.37	Custom BHI AutoTrak Curve (Axial Corr, Short spacing) (Rockies 0.03Gt model)		STATE ANTELOPE 14-2-14XRLNB PWB



Planned Wellpath Report

STATE ANTELOPE 14-2-14XRLNB PWP (REV-A.0)

Page 10 of 10



REFERENCE WELLPATH IDENTIFICATION				
Operator	BONANZA CREEK OIL COMPANY		Slot	SLOT#17 STATE ANTELOPE 14-2-14XRLNB (778'FSL & 811'FWL, SEC.02)
Area	COLORADO		Well	STATE ANTELOPE 14-2-14XRLNB
Field	WELD COUNTY		Wellbore	STATE ANTELOPE 14-2-14XRLNB PWB
Facility	SEC.02-T5N-R62W			

DESIGN COMMENTS				
MD [ft]	Inclination [°]	Azimuth [°]	TVD [ft]	Comment
17.00	0.000	295.796	17.00	Tie On
1900.00	0.000	295.796	1900.00	End of Tangent
2102.13	4.043	295.796	2101.96	End of Build (XS)
5620.26	4.043	295.796	5611.34	End of Tangent (XS)
6538.15	90.000	179.511	6201.00	End of 3D Arc (XS)
17091.18	90.000	179.511	6201.00	End of Tangent (XS)