

Location:	COLORADO	Slot:	SLOT#16 STATE ANTELOPE E-2-14XRLNB (798'FSL & 811'FWL, SEC.02)
Field:	WELD COUNTY	Well:	STATE ANTELOPE E-2-14XRLNB
Facility:	SEC.02-T5N-R62W	Wellbore:	STATE ANTELOPE E-2-14XRLNB PWB

Location:	COLORADO	Slot:	SLOT#16 STATE ANTELOPE E-2-14XRLNB (798'FSL & 811'FWL, SEC.02)
Field:	WELD COUNTY	Well:	STATE ANTELOPE E-2-14XRLNB
Facility:	SEC.02-T5N-R62W	Wellbore:	STATE ANTELOPE E-2-14XRLNB PWB

Plot reference wellpath is STATE ANTELOPE E-2-14XB1NB PWP (REV-A.0)

True vertical depths are referenced to RIG (177KB) (RKB)	* = Wellpath was transformed from a different geodetic datum
Measured depths are referenced to RIG (177KB) (RKB)	North Reference: True north
RIG (177KB) (RKB) to Mean Sea Level: 4641 feet	Scale: True distance
Mean Sea Level to Mud line (At Slot: SLOT#16 STATE ANTELOPE E-2-14XRLNB (786FSL & 811°FWL, SEC.02): 0 feet	Depths are in feet
Coordinates are in feet referenced to Slot	Created by: ingmjmr on 2017-12-01
	Database: Denver

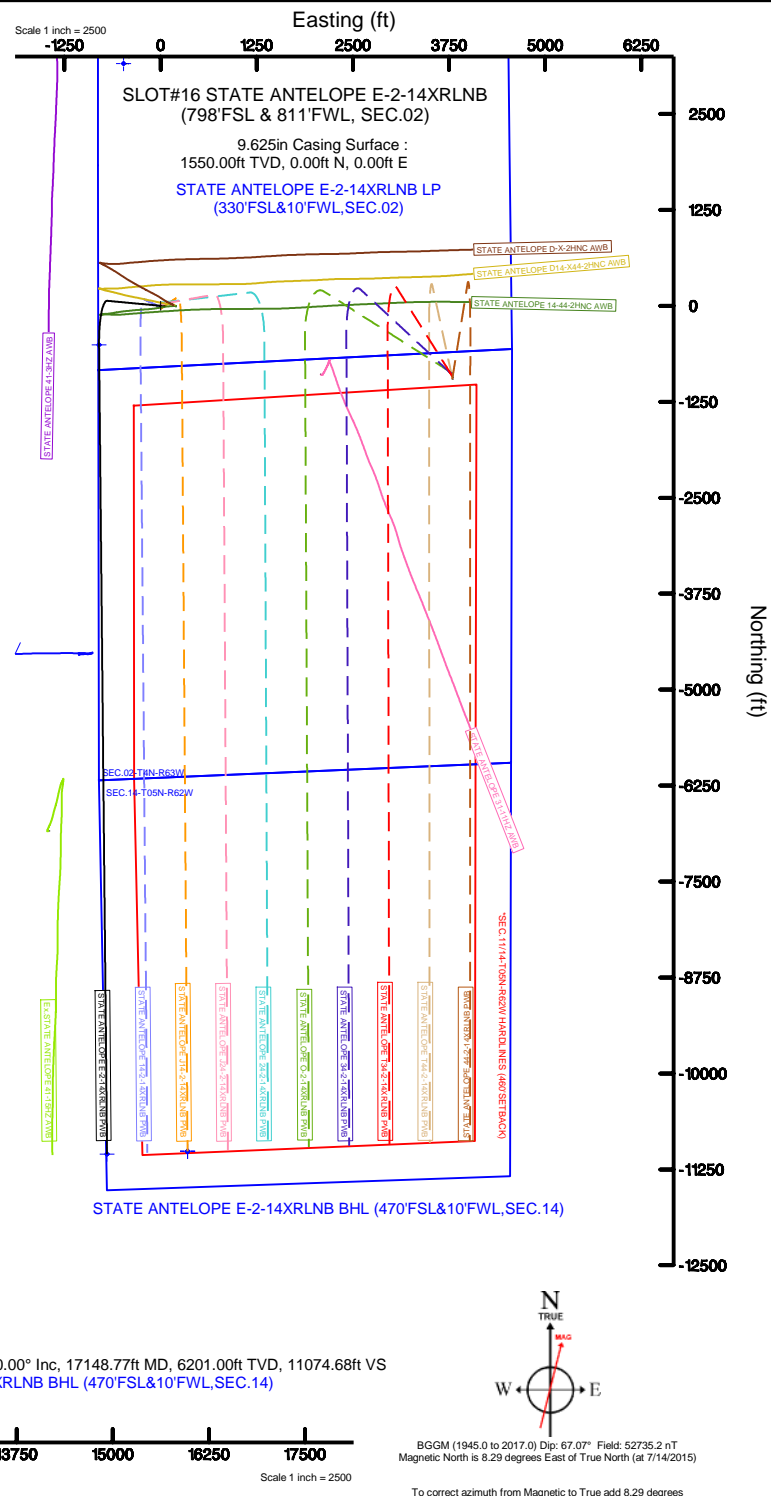
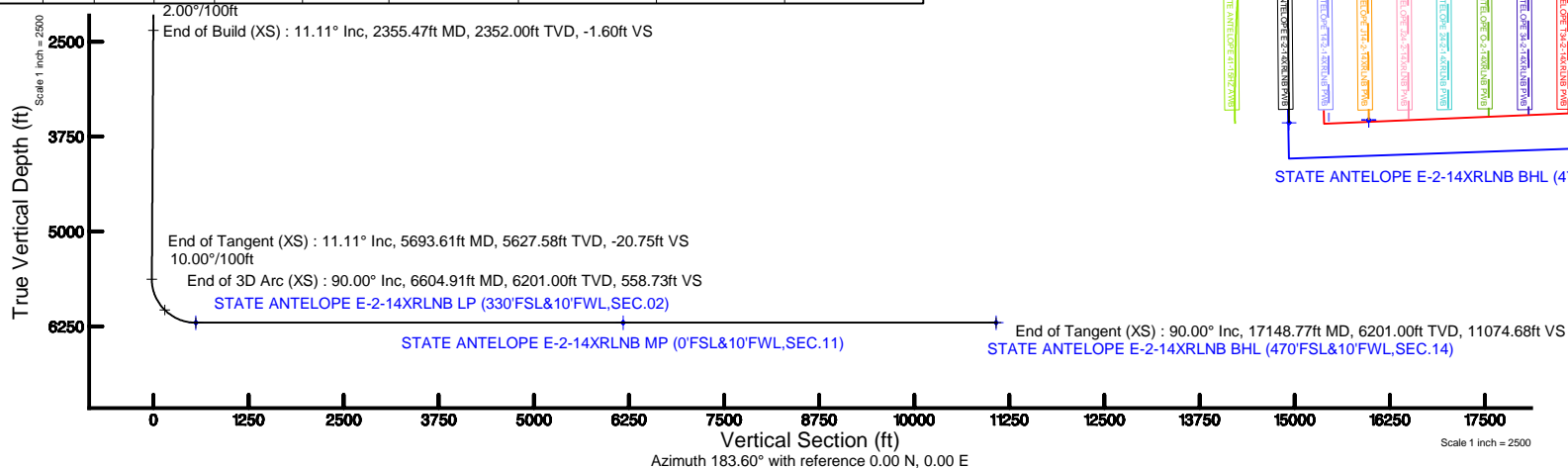
Facility Name				Grid East (US ft)	Grid North (US ft)	Latitude	Longitude
SEC 02-T0N-R62W				3335087.552	1399676.056	40°25'27.372"N	104°17'47.004"W
Slot	Local N (ft)	Local E (ft)	Grid East (US ft)	Grid North (US ft)	Latitude	Longitude	
SLOT#16 STATE ANTELOPE E-2-14XRLNB (79#FSL & 81#FWL, SEC.02)	-1.11	-200.39	3334887.207	1399672.224	40°25'27.361"N	104°17'49.596"W	
RIG (17XRB) (R0B) to Mud line (At Slot: SLOT#16 STATE ANTELOPE E-2-14XRLNB (79#FSL & 81#FWL, SEC.02))						4641ft	
Mean Sea Level to Mud line (At Slot: SLOT#16 STATE ANTELOPE E-2-14XRLNB (79#FSL & 81#FWL, SEC.02))						0ft	
RIG (17XRB) (R0B) to Mean Sea Level						4641ft	

Design Comment	MD (ft)	Inc (°)	Az (°)	TVD (ft)	Local N (ft)	Local E (ft)	DLS (°/100ft)	VS (ft)
Tie On	17.00	0.000	275.309	17.00	0.00	0.00	0.00	0.00
End of Tangent	1800.00	0.000	275.309	1800.00	0.00	0.00	0.00	0.00
End of Build (XS)	2355.47	11.109	275.309	2352.00	4.97	-53.45	2.00	-1.60
End of Tangent (XS)	5693.61	11.109	275.309	5627.58	64.48	-693.90	0.00	-20.75
End of 3D Arc (XS)	6604.91	90.000	179.434	6201.00	-509.44	-800.24	10.00	558.73
End of Tangent (XS)	17148.77	90.000	179.434	6201.00	-11052.79	-696.01	0.00	11074.68

Name	Start MD (ft)	End MD (ft)	Interval (ft)	Start TVD (ft)	End TVD (ft)	Start Local N (ft)	Start Local E (ft)	End Local N (ft)	End Local E (ft)	Wellbore
9.625in Casing Surface	17.00	1550.00	1533.00	17.00	1550.00	0.00	0.00	0.00	0.00	STATE ANTELOPE E-2-14XRLNB PWB
8.5in Open Hole	1550.00	17148.77	15598.77	1550.00	6201.00	0.00	0.00	-11052.79	-696.01	STATE ANTELOPE E-2-14XRLNB PWB

Start MD (ft)	End MD (ft)	Tool	Model	Log Name/Comment	Wellbore
17.00	1550.00	BHI NavTrak	Custom BHI NavTrak (Standard Rotating+Axial Cor) (Rockies 0.03Gt model)		STATE ANTELOPE E-2-14XRLNB PWB
1550.00	17194.89	BHI AutoTrak Curve	Custom BHI AutoTrak Curve (Axial Cor, Short spacing) (Rockies 0.03Gt model)		STATE ANTELOPE E-2-14XRLNB PWB

MD (ft)	Inc (°)	Az (°)	TVD (ft)	Local N (ft)	Local E (ft)	Grid East (US ft)	Grid North (US ft)	Latitude	Longitude
17148.77	90.000	179.434	6201.00	-11052.79	-696.01	3334341.21	1388611.46	40°23'38.141"N	104°17'58.590"W





Planned Wellpath Report

STATE ANTELOPE E-2-14XRLNB PWP (REV-A.0)

Page 1 of 10



REFERENCE WELLPATH IDENTIFICATION

Operator	BONANZA CREEK OIL COMPANY	Slot	SLOT#16 STATE ANTELOPE E-2-14XRLNB (798'FSL & 811'FWL, SEC.02)
Area	COLORADO	Well	STATE ANTELOPE E-2-14XRLNB
Field	WELD COUNTY	Wellbore	STATE ANTELOPE E-2-14XRLNB PWB
Facility	SEC.02-T5N-R62W		

REPORT SETUP INFORMATION

Projection System	NAD83 / Lambert Colorado SP, Northern Zone (501), US feet	Software System	WellArchitect® 5.0
North Reference	True	User	Ingmjmr
Scale	0.999961	Report Generated	12/1/2017 at 10:31:53 AM
Convergence at slot	0.78° East	Database/Source file	Denver/STATE_ANTELOPE_E-2-14XRLNB_PWP__REV-A.0_.xml

WELLPATH LOCATION

	Local coordinates		Grid coordinates		Geographic coordinates	
	North[ft]	East[ft]	Easting[US ft]	Northing[US ft]	Latitude	Longitude
Slot Location	-1.11	-200.39	3334887.21	1399672.22	40°25'27.361"N	104°17'49.595"W
Facility Reference Pt			3335087.55	1399676.06	40°25'27.372"N	104°17'47.004"W
Field Reference Pt			3224525.77	1254425.87	40°01'44.400"N	104°41'53.556"W

WELLPATH DATUM

Calculation method	Minimum curvature	RIG (17'KB) (RKB) to Facility Vertical Datum	4641.00ft
Horizontal Reference Pt	Slot	RIG (17'KB) (RKB) to Mean Sea Level	4641.00ft
Vertical Reference Pt	RIG (17'KB) (RKB)	RIG (17'KB) (RKB) to Mud Line at Slot (SLOT#16 STATE ANTELOPE E-2-14XRLNB (798'FSL & 811'FWL, SEC.02))	4641.00ft
MD Reference Pt	RIG (17'KB) (RKB)	Section Origin	N 0.00, E 0.00 ft
Field Vertical Reference	Mean Sea Level	Section Azimuth	183.60°



Planned Wellpath Report

STATE ANTELOPE E-2-14XRLNB PWP (REV-A.0)

Page 2 of 10



REFERENCE WELLPATH IDENTIFICATION			
Operator	BONANZA CREEK OIL COMPANY	Slot	SLOT#16 STATE ANTELOPE E-2-14XRLNB (798'FSL & 811'FWL, SEC.02)
Area	COLORADO	Well	STATE ANTELOPE E-2-14XRLNB
Field	WELD COUNTY	Wellbore	STATE ANTELOPE E-2-14XRLNB PWB
Facility	SEC.02-T5N-R62W		

WELLPATH DATA (178 stations) † = interpolated/extrapolated station										
MD [ft]	Inclination [°]	Azimuth [°]	TVD [ft]	Vert Sect [ft]	North [ft]	East [ft]	Latitude	Longitude	DLS [°/100ft]	Comments
0.00†	0.000	275.309	0.00	0.00	0.00	0.00	40°25'27.361"N	104°17'49.595"W	0.00	
17.00	0.000	275.309	17.00	0.00	0.00	0.00	40°25'27.361"N	104°17'49.595"W	0.00	Tie On
117.00†	0.000	275.309	117.00	0.00	0.00	0.00	40°25'27.361"N	104°17'49.595"W	0.00	
217.00†	0.000	275.309	217.00	0.00	0.00	0.00	40°25'27.361"N	104°17'49.595"W	0.00	
317.00†	0.000	275.309	317.00	0.00	0.00	0.00	40°25'27.361"N	104°17'49.595"W	0.00	
417.00†	0.000	275.309	417.00	0.00	0.00	0.00	40°25'27.361"N	104°17'49.595"W	0.00	
517.00†	0.000	275.309	517.00	0.00	0.00	0.00	40°25'27.361"N	104°17'49.595"W	0.00	
617.00†	0.000	275.309	617.00	0.00	0.00	0.00	40°25'27.361"N	104°17'49.595"W	0.00	
717.00†	0.000	275.309	717.00	0.00	0.00	0.00	40°25'27.361"N	104°17'49.595"W	0.00	
817.00†	0.000	275.309	817.00	0.00	0.00	0.00	40°25'27.361"N	104°17'49.595"W	0.00	
917.00†	0.000	275.309	917.00	0.00	0.00	0.00	40°25'27.361"N	104°17'49.595"W	0.00	
1017.00†	0.000	275.309	1017.00	0.00	0.00	0.00	40°25'27.361"N	104°17'49.595"W	0.00	
1117.00†	0.000	275.309	1117.00	0.00	0.00	0.00	40°25'27.361"N	104°17'49.595"W	0.00	
1217.00†	0.000	275.309	1217.00	0.00	0.00	0.00	40°25'27.361"N	104°17'49.595"W	0.00	
1317.00†	0.000	275.309	1317.00	0.00	0.00	0.00	40°25'27.361"N	104°17'49.595"W	0.00	
1417.00†	0.000	275.309	1417.00	0.00	0.00	0.00	40°25'27.361"N	104°17'49.595"W	0.00	
1517.00†	0.000	275.309	1517.00	0.00	0.00	0.00	40°25'27.361"N	104°17'49.595"W	0.00	
1617.00†	0.000	275.309	1617.00	0.00	0.00	0.00	40°25'27.361"N	104°17'49.595"W	0.00	
1717.00†	0.000	275.309	1717.00	0.00	0.00	0.00	40°25'27.361"N	104°17'49.595"W	0.00	
1800.00	0.000	275.309	1800.00	0.00	0.00	0.00	40°25'27.361"N	104°17'49.595"W	0.00	End of Tangent
1817.00†	0.340	275.309	1817.00	0.00	0.00	-0.05	40°25'27.361"N	104°17'49.596"W	2.00	
1917.00†	2.340	275.309	1916.97	-0.07	0.22	-2.38	40°25'27.363"N	104°17'49.626"W	2.00	
2017.00†	4.340	275.309	2016.79	-0.24	0.76	-8.18	40°25'27.369"N	104°17'49.701"W	2.00	
2117.00†	6.340	275.309	2116.35	-0.52	1.62	-17.45	40°25'27.377"N	104°17'49.821"W	2.00	
2217.00†	8.340	275.309	2215.53	-0.90	2.80	-30.17	40°25'27.389"N	104°17'49.985"W	2.00	
2317.00†	10.340	275.309	2314.20	-1.39	4.30	-46.32	40°25'27.404"N	104°17'50.194"W	2.00	
2355.47	11.109	275.309	2352.00	-1.60	4.97	-53.45	40°25'27.410"N	104°17'50.286"W	2.00	End of Build (XS)
2417.00†	11.109	275.309	2412.37	-1.95	6.06	-65.26	40°25'27.421"N	104°17'50.439"W	0.00	
2517.00†	11.109	275.309	2510.50	-2.52	7.85	-84.44	40°25'27.439"N	104°17'50.687"W	0.00	
2617.00†	11.109	275.309	2608.63	-3.10	9.63	-103.63	40°25'27.456"N	104°17'50.935"W	0.00	



Planned Wellpath Report

STATE ANTELOPE E-2-14XRLNB PWP (REV-A.0)

Page 3 of 10



REFERENCE WELLPATH IDENTIFICATION			
Operator	BONANZA CREEK OIL COMPANY	Slot	SLOT#16 STATE ANTELOPE E-2-14XRLNB (798'FSL & 811'FWL, SEC.02)
Area	COLORADO	Well	STATE ANTELOPE E-2-14XRLNB
Field	WELD COUNTY	Wellbore	STATE ANTELOPE E-2-14XRLNB PWB
Facility	SEC.02-T5N-R62W		

WELLPATH DATA (178 stations) † = interpolated/extrapolated station										
MD [ft]	Inclination [°]	Azimuth [°]	TVD [ft]	Vert Sect [ft]	North [ft]	East [ft]	Latitude	Longitude	DLS [°/100ft]	Comments
2717.00†	11.109	275.309	2706.75	-3.67	11.41	-122.82	40°25'27.474"N	104°17'51.183"W	0.00	
2817.00†	11.109	275.309	2804.88	-4.25	13.20	-142.00	40°25'27.491"N	104°17'51.431"W	0.00	
2917.00†	11.109	275.309	2903.00	-4.82	14.98	-161.19	40°25'27.509"N	104°17'51.679"W	0.00	
3017.00†	11.109	275.309	3001.13	-5.39	16.76	-180.37	40°25'27.527"N	104°17'51.927"W	0.00	
3117.00†	11.109	275.309	3099.26	-5.97	18.54	-199.56	40°25'27.544"N	104°17'52.175"W	0.00	
3217.00†	11.109	275.309	3197.38	-6.54	20.33	-218.74	40°25'27.562"N	104°17'52.423"W	0.00	
3317.00†	11.109	275.309	3295.51	-7.11	22.11	-237.93	40°25'27.579"N	104°17'52.671"W	0.00	
3417.00†	11.109	275.309	3393.63	-7.69	23.89	-257.12	40°25'27.597"N	104°17'52.920"W	0.00	
3517.00†	11.109	275.309	3491.76	-8.26	25.68	-276.30	40°25'27.615"N	104°17'53.168"W	0.00	
3617.00†	11.109	275.309	3589.89	-8.83	27.46	-295.49	40°25'27.632"N	104°17'53.416"W	0.00	
3717.00†	11.109	275.309	3688.01	-9.41	29.24	-314.67	40°25'27.650"N	104°17'53.664"W	0.00	
3817.00†	11.109	275.309	3786.14	-9.98	31.03	-333.86	40°25'27.668"N	104°17'53.912"W	0.00	
3917.00†	11.109	275.309	3884.26	-10.56	32.81	-353.04	40°25'27.685"N	104°17'54.160"W	0.00	
4017.00†	11.109	275.309	3982.39	-11.13	34.59	-372.23	40°25'27.703"N	104°17'54.408"W	0.00	
4117.00†	11.109	275.309	4080.52	-11.70	36.37	-391.42	40°25'27.720"N	104°17'54.656"W	0.00	
4217.00†	11.109	275.309	4178.64	-12.28	38.16	-410.60	40°25'27.738"N	104°17'54.904"W	0.00	
4317.00†	11.109	275.309	4276.77	-12.85	39.94	-429.79	40°25'27.756"N	104°17'55.152"W	0.00	
4417.00†	11.109	275.309	4374.89	-13.42	41.72	-448.97	40°25'27.773"N	104°17'55.400"W	0.00	
4517.00†	11.109	275.309	4473.02	-14.00	43.51	-468.16	40°25'27.791"N	104°17'55.648"W	0.00	
4617.00†	11.109	275.309	4571.15	-14.57	45.29	-487.35	40°25'27.808"N	104°17'55.896"W	0.00	
4717.00†	11.109	275.309	4669.27	-15.14	47.07	-506.53	40°25'27.826"N	104°17'56.144"W	0.00	
4817.00†	11.109	275.309	4767.40	-15.72	48.85	-525.72	40°25'27.844"N	104°17'56.393"W	0.00	
4917.00†	11.109	275.309	4865.52	-16.29	50.64	-544.90	40°25'27.861"N	104°17'56.641"W	0.00	
5017.00†	11.109	275.309	4963.65	-16.87	52.42	-564.09	40°25'27.879"N	104°17'56.889"W	0.00	
5117.00†	11.109	275.309	5061.78	-17.44	54.20	-583.27	40°25'27.897"N	104°17'57.137"W	0.00	
5217.00†	11.109	275.309	5159.90	-18.01	55.99	-602.46	40°25'27.914"N	104°17'57.385"W	0.00	
5317.00†	11.109	275.309	5258.03	-18.59	57.77	-621.65	40°25'27.932"N	104°17'57.633"W	0.00	
5417.00†	11.109	275.309	5356.16	-19.16	59.55	-640.83	40°25'27.949"N	104°17'57.881"W	0.00	
5517.00†	11.109	275.309	5454.28	-19.73	61.33	-660.02	40°25'27.967"N	104°17'58.129"W	0.00	
5617.00†	11.109	275.309	5552.41	-20.31	63.12	-679.20	40°25'27.985"N	104°17'58.377"W	0.00	



Planned Wellpath Report

STATE ANTELOPE E-2-14XRLNB PWP (REV-A.0)

Page 4 of 10



REFERENCE WELLPATH IDENTIFICATION			
Operator	BONANZA CREEK OIL COMPANY	Slot	SLOT#16 STATE ANTELOPE E-2-14XRLNB (798'FSL & 811'FWL, SEC.02)
Area	COLORADO	Well	STATE ANTELOPE E-2-14XRLNB
Field	WELD COUNTY	Wellbore	STATE ANTELOPE E-2-14XRLNB PWB
Facility	SEC.02-T5N-R62W		

WELLPATH DATA (178 stations) † = interpolated/extrapolated station										
MD [ft]	Inclination [°]	Azimuth [°]	TVD [ft]	Vert Sect [ft]	North [ft]	East [ft]	Latitude	Longitude	DLS [°/100ft]	Comments
5693.61	11.109	275.309	5627.58	-20.75	64.48	-693.90	40°25'27.998"N	104°17'58.567"W	0.00	End of Tangent (XS)
5717.00†	11.118	263.151	5650.54	-20.40	64.42	-698.38	40°25'27.998"N	104°17'58.625"W	10.00	
5817.00†	15.692	223.484	5747.98	-8.25	53.43	-717.31	40°25'27.889"N	104°17'58.870"W	10.00	
5917.00†	23.798	205.724	5842.11	20.90	25.37	-735.42	40°25'27.612"N	104°17'59.104"W	10.00	
6017.00†	32.921	196.993	5930.05	66.14	-18.90	-752.16	40°25'27.174"N	104°17'59.320"W	10.00	
6117.00†	42.409	191.782	6009.14	126.10	-78.05	-767.03	40°25'26.590"N	104°17'59.513"W	10.00	
6217.00†	52.058	188.193	6076.97	198.97	-150.27	-779.56	40°25'25.876"N	104°17'59.675"W	10.00	
6317.00†	61.792	185.448	6131.49	282.53	-233.38	-789.39	40°25'25.055"N	104°17'59.802"W	10.00	
6417.00†	71.570	183.166	6171.03	374.23	-324.84	-796.21	40°25'24.151"N	104°17'59.890"W	10.00	
6517.00†	81.373	181.132	6194.39	471.30	-421.87	-799.82	40°25'23.192"N	104°17'59.936"W	10.00	
6604.91	90.000	179.434	6201.00†	558.73	-509.44	-800.24	40°25'22.327"N	104°17'59.942"W	10.00	End of 3D Arc (XS)
6617.00†	90.000	179.434	6201.00	570.79	-521.53	-800.12	40°25'22.207"N	104°17'59.940"W	0.00	
6717.00†	90.000	179.434	6201.00	670.52	-621.53	-799.13	40°25'21.219"N	104°17'59.928"W	0.00	
6817.00†	90.000	179.434	6201.00	770.26	-721.52	-798.14	40°25'20.231"N	104°17'59.915"W	0.00	
6917.00†	90.000	179.434	6201.00	869.99	-821.52	-797.16	40°25'19.243"N	104°17'59.902"W	0.00	
7017.00†	90.000	179.434	6201.00	969.73	-921.51	-796.17	40°25'18.255"N	104°17'59.889"W	0.00	
7117.00†	90.000	179.434	6201.00	1069.46	-1021.51	-795.18	40°25'17.267"N	104°17'59.876"W	0.00	
7217.00†	90.000	179.434	6201.00	1169.20	-1121.50	-794.19	40°25'16.279"N	104°17'59.863"W	0.00	
7317.00†	90.000	179.434	6201.00	1268.94	-1221.50	-793.20	40°25'15.291"N	104°17'59.851"W	0.00	
7417.00†	90.000	179.434	6201.00	1368.67	-1321.49	-792.21	40°25'14.302"N	104°17'59.838"W	0.00	
7517.00†	90.000	179.434	6201.00	1468.41	-1421.49	-791.22	40°25'13.314"N	104°17'59.825"W	0.00	
7617.00†	90.000	179.434	6201.00	1568.14	-1521.48	-790.24	40°25'12.326"N	104°17'59.812"W	0.00	
7717.00†	90.000	179.434	6201.00	1667.88	-1621.48	-789.25	40°25'11.338"N	104°17'59.799"W	0.00	
7817.00†	90.000	179.434	6201.00	1767.61	-1721.48	-788.26	40°25'10.350"N	104°17'59.786"W	0.00	
7917.00†	90.000	179.434	6201.00	1867.35	-1821.47	-787.27	40°25'09.362"N	104°17'59.774"W	0.00	
8017.00†	90.000	179.434	6201.00	1967.08	-1921.47	-786.28	40°25'08.374"N	104°17'59.761"W	0.00	
8117.00†	90.000	179.434	6201.00	2066.82	-2021.46	-785.29	40°25'07.386"N	104°17'59.748"W	0.00	
8217.00†	90.000	179.434	6201.00	2166.55	-2121.46	-784.30	40°25'06.397"N	104°17'59.735"W	0.00	
8317.00†	90.000	179.434	6201.00	2266.29	-2221.45	-783.32	40°25'05.409"N	104°17'59.722"W	0.00	
8417.00†	90.000	179.434	6201.00	2366.02	-2321.45	-782.33	40°25'04.421"N	104°17'59.710"W	0.00	



Planned Wellpath Report

STATE ANTELOPE E-2-14XRLNB PWP (REV-A.0)

Page 5 of 10



REFERENCE WELLPATH IDENTIFICATION			
Operator	BONANZA CREEK OIL COMPANY	Slot	SLOT#16 STATE ANTELOPE E-2-14XRLNB (798'FSL & 811'FWL, SEC.02)
Area	COLORADO	Well	STATE ANTELOPE E-2-14XRLNB
Field	WELD COUNTY	Wellbore	STATE ANTELOPE E-2-14XRLNB PWB
Facility	SEC.02-T5N-R62W		

WELLPATH DATA (178 stations) † = interpolated/extrapolated station										
MD [ft]	Inclination [°]	Azimuth [°]	TVD [ft]	Vert Sect [ft]	North [ft]	East [ft]	Latitude	Longitude	DLS [°/100ft]	Comments
8517.00†	90.000	179.434	6201.00	2465.76	-2421.44	-781.34	40°25'03.433"N	104°17'59.697"W	0.00	
8617.00†	90.000	179.434	6201.00	2565.49	-2521.44	-780.35	40°25'02.445"N	104°17'59.684"W	0.00	
8717.00†	90.000	179.434	6201.00	2665.23	-2621.43	-779.36	40°25'01.457"N	104°17'59.671"W	0.00	
8817.00†	90.000	179.434	6201.00	2764.96	-2721.43	-778.37	40°25'00.469"N	104°17'59.658"W	0.00	
8917.00†	90.000	179.434	6201.00	2864.70	-2821.42	-777.38	40°24'59.481"N	104°17'59.645"W	0.00	
9017.00†	90.000	179.434	6201.00	2964.44	-2921.42	-776.40	40°24'58.493"N	104°17'59.633"W	0.00	
9117.00†	90.000	179.434	6201.00	3064.17	-3021.41	-775.41	40°24'57.504"N	104°17'59.620"W	0.00	
9217.00†	90.000	179.434	6201.00	3163.91	-3121.41	-774.42	40°24'56.516"N	104°17'59.607"W	0.00	
9317.00†	90.000	179.434	6201.00	3263.64	-3221.40	-773.43	40°24'55.528"N	104°17'59.594"W	0.00	
9417.00†	90.000	179.434	6201.00	3363.38	-3321.40	-772.44	40°24'54.540"N	104°17'59.581"W	0.00	
9517.00†	90.000	179.434	6201.00	3463.11	-3421.39	-771.45	40°24'53.552"N	104°17'59.569"W	0.00	
9617.00†	90.000	179.434	6201.00	3562.85	-3521.39	-770.46	40°24'52.564"N	104°17'59.556"W	0.00	
9717.00†	90.000	179.434	6201.00	3662.58	-3621.38	-769.48	40°24'51.576"N	104°17'59.543"W	0.00	
9817.00†	90.000	179.434	6201.00	3762.32	-3721.38	-768.49	40°24'50.588"N	104°17'59.530"W	0.00	
9917.00†	90.000	179.434	6201.00	3862.05	-3821.37	-767.50	40°24'49.600"N	104°17'59.517"W	0.00	
10017.00†	90.000	179.434	6201.00	3961.79	-3921.37	-766.51	40°24'48.611"N	104°17'59.504"W	0.00	
10117.00†	90.000	179.434	6201.00	4061.52	-4021.36	-765.52	40°24'47.623"N	104°17'59.492"W	0.00	
10217.00†	90.000	179.434	6201.00	4161.26	-4121.36	-764.53	40°24'46.635"N	104°17'59.479"W	0.00	
10317.00†	90.000	179.434	6201.00	4260.99	-4221.35	-763.54	40°24'45.647"N	104°17'59.466"W	0.00	
10417.00†	90.000	179.434	6201.00	4360.73	-4321.35	-762.56	40°24'44.659"N	104°17'59.453"W	0.00	
10517.00†	90.000	179.434	6201.00	4460.47	-4421.34	-761.57	40°24'43.671"N	104°17'59.440"W	0.00	
10617.00†	90.000	179.434	6201.00	4560.20	-4521.34	-760.58	40°24'42.683"N	104°17'59.427"W	0.00	
10717.00†	90.000	179.434	6201.00	4659.94	-4621.33	-759.59	40°24'41.695"N	104°17'59.415"W	0.00	
10817.00†	90.000	179.434	6201.00	4759.67	-4721.33	-758.60	40°24'40.707"N	104°17'59.402"W	0.00	
10917.00†	90.000	179.434	6201.00	4859.41	-4821.32	-757.61	40°24'39.718"N	104°17'59.389"W	0.00	
11017.00†	90.000	179.434	6201.00	4959.14	-4921.32	-756.62	40°24'38.730"N	104°17'59.376"W	0.00	
11117.00†	90.000	179.434	6201.00	5058.88	-5021.31	-755.64	40°24'37.742"N	104°17'59.363"W	0.00	
11217.00†	90.000	179.434	6201.00	5158.61	-5121.31	-754.65	40°24'36.754"N	104°17'59.351"W	0.00	
11317.00†	90.000	179.434	6201.00	5258.35	-5221.30	-753.66	40°24'35.766"N	104°17'59.338"W	0.00	
11417.00†	90.000	179.434	6201.00	5358.08	-5321.30	-752.67	40°24'34.778"N	104°17'59.325"W	0.00	



Planned Wellpath Report

STATE ANTELOPE E-2-14XRLNB PWP (REV-A.0)

Page 6 of 10



REFERENCE WELLPATH IDENTIFICATION			
Operator	BONANZA CREEK OIL COMPANY	Slot	SLOT#16 STATE ANTELOPE E-2-14XRLNB (798'FSL & 811'FWL, SEC.02)
Area	COLORADO	Well	STATE ANTELOPE E-2-14XRLNB
Field	WELD COUNTY	Wellbore	STATE ANTELOPE E-2-14XRLNB PWB
Facility	SEC.02-T5N-R62W		

WELLPATH DATA (178 stations) † = interpolated/extrapolated station										
MD [ft]	Inclination [°]	Azimuth [°]	TVD [ft]	Vert Sect [ft]	North [ft]	East [ft]	Latitude	Longitude	DLS [°/100ft]	Comments
11517.00†	90.000	179.434	6201.00	5457.82	-5421.29	-751.68	40°24'33.790"N	104°17'59.312"W	0.00	
11617.00†	90.000	179.434	6201.00	5557.55	-5521.29	-750.69	40°24'32.802"N	104°17'59.299"W	0.00	
11717.00†	90.000	179.434	6201.00	5657.29	-5621.28	-749.70	40°24'31.814"N	104°17'59.286"W	0.00	
11817.00†	90.000	179.434	6201.00	5757.02	-5721.28	-748.72	40°24'30.825"N	104°17'59.274"W	0.00	
11917.00†	90.000	179.434	6201.00	5856.76	-5821.27	-747.73	40°24'29.837"N	104°17'59.261"W	0.00	
12017.00†	90.000	179.434	6201.00	5956.49	-5921.27	-746.74	40°24'28.849"N	104°17'59.248"W	0.00	
12117.00†	90.000	179.434	6201.00	6056.23	-6021.26	-745.75	40°24'27.861"N	104°17'59.235"W	0.00	
12217.00†	90.000	179.434	6201.00	6155.97	-6121.26	-744.76	40°24'26.873"N	104°17'59.222"W	0.00	
12317.00†	90.000	179.434	6201.00	6255.70	-6221.26	-743.77	40°24'25.885"N	104°17'59.210"W	0.00	
12417.00†	90.000	179.434	6201.00	6355.44	-6321.25	-742.79	40°24'24.897"N	104°17'59.197"W	0.00	
12517.00†	90.000	179.434	6201.00	6455.17	-6421.25	-741.80	40°24'23.909"N	104°17'59.184"W	0.00	
12617.00†	90.000	179.434	6201.00	6554.91	-6521.24	-740.81	40°24'22.920"N	104°17'59.171"W	0.00	
12717.00†	90.000	179.434	6201.00	6654.64	-6621.24	-739.82	40°24'21.932"N	104°17'59.158"W	0.00	
12817.00†	90.000	179.434	6201.00	6754.38	-6721.23	-738.83	40°24'20.944"N	104°17'59.145"W	0.00	
12917.00†	90.000	179.434	6201.00	6854.11	-6821.23	-737.84	40°24'19.956"N	104°17'59.133"W	0.00	
13017.00†	90.000	179.434	6201.00	6953.85	-6921.22	-736.85	40°24'18.968"N	104°17'59.120"W	0.00	
13117.00†	90.000	179.434	6201.00	7053.58	-7021.22	-735.87	40°24'17.980"N	104°17'59.107"W	0.00	
13217.00†	90.000	179.434	6201.00	7153.32	-7121.21	-734.88	40°24'16.992"N	104°17'59.094"W	0.00	
13317.00†	90.000	179.434	6201.00	7253.05	-7221.21	-733.89	40°24'16.004"N	104°17'59.081"W	0.00	
13417.00†	90.000	179.434	6201.00	7352.79	-7321.20	-732.90	40°24'15.016"N	104°17'59.069"W	0.00	
13517.00†	90.000	179.434	6201.00	7452.52	-7421.20	-731.91	40°24'14.027"N	104°17'59.056"W	0.00	
13617.00†	90.000	179.434	6201.00	7552.26	-7521.19	-730.92	40°24'13.039"N	104°17'59.043"W	0.00	
13717.00†	90.000	179.434	6201.00	7652.00	-7621.19	-729.93	40°24'12.051"N	104°17'59.030"W	0.00	
13817.00†	90.000	179.434	6201.00	7751.73	-7721.18	-728.95	40°24'11.063"N	104°17'59.017"W	0.00	
13917.00†	90.000	179.434	6201.00	7851.47	-7821.18	-727.96	40°24'10.075"N	104°17'59.005"W	0.00	
14017.00†	90.000	179.434	6201.00	7951.20	-7921.17	-726.97	40°24'09.087"N	104°17'58.992"W	0.00	
14117.00†	90.000	179.434	6201.00	8050.94	-8021.17	-725.98	40°24'08.099"N	104°17'58.979"W	0.00	
14217.00†	90.000	179.434	6201.00	8150.67	-8121.16	-724.99	40°24'07.111"N	104°17'58.966"W	0.00	
14317.00†	90.000	179.434	6201.00	8250.41	-8221.16	-724.00	40°24'06.123"N	104°17'58.953"W	0.00	
14417.00†	90.000	179.434	6201.00	8350.14	-8321.15	-723.01	40°24'05.134"N	104°17'58.940"W	0.00	



Planned Wellpath Report

STATE ANTELOPE E-2-14XRLNB PWP (REV-A.0)

Page 7 of 10



REFERENCE WELLPATH IDENTIFICATION			
Operator	BONANZA CREEK OIL COMPANY	Slot	SLOT#16 STATE ANTELOPE E-2-14XRLNB (798'FSL & 811'FWL, SEC.02)
Area	COLORADO	Well	STATE ANTELOPE E-2-14XRLNB
Field	WELD COUNTY	Wellbore	STATE ANTELOPE E-2-14XRLNB PWB
Facility	SEC.02-T5N-R62W		

WELLPATH DATA (178 stations) † = interpolated/extrapolated station										
MD [ft]	Inclination [°]	Azimuth [°]	TVD [ft]	Vert Sect [ft]	North [ft]	East [ft]	Latitude	Longitude	DLS [°/100ft]	Comments
14517.00†	90.000	179.434	6201.00	8449.88	-8421.15	-722.03	40°24'04.146"N	104°17'58.928"W	0.00	
14617.00†	90.000	179.434	6201.00	8549.61	-8521.14	-721.04	40°24'03.158"N	104°17'58.915"W	0.00	
14717.00†	90.000	179.434	6201.00	8649.35	-8621.14	-720.05	40°24'02.170"N	104°17'58.902"W	0.00	
14817.00†	90.000	179.434	6201.00	8749.08	-8721.13	-719.06	40°24'01.182"N	104°17'58.889"W	0.00	
14917.00†	90.000	179.434	6201.00	8848.82	-8821.13	-718.07	40°24'00.194"N	104°17'58.876"W	0.00	
15017.00†	90.000	179.434	6201.00	8948.55	-8921.12	-717.08	40°23'59.206"N	104°17'58.864"W	0.00	
15117.00†	90.000	179.434	6201.00	9048.29	-9021.12	-716.09	40°23'58.218"N	104°17'58.851"W	0.00	
15217.00†	90.000	179.434	6201.00	9148.02	-9121.11	-715.11	40°23'57.229"N	104°17'58.838"W	0.00	
15317.00†	90.000	179.434	6201.00	9247.76	-9221.11	-714.12	40°23'56.241"N	104°17'58.825"W	0.00	
15417.00†	90.000	179.434	6201.00	9347.50	-9321.10	-713.13	40°23'55.253"N	104°17'58.812"W	0.00	
15517.00†	90.000	179.434	6201.00	9447.23	-9421.10	-712.14	40°23'54.265"N	104°17'58.799"W	0.00	
15617.00†	90.000	179.434	6201.00	9546.97	-9521.09	-711.15	40°23'53.277"N	104°17'58.787"W	0.00	
15717.00†	90.000	179.434	6201.00	9646.70	-9621.09	-710.16	40°23'52.289"N	104°17'58.774"W	0.00	
15817.00†	90.000	179.434	6201.00	9746.44	-9721.08	-709.17	40°23'51.301"N	104°17'58.761"W	0.00	
15917.00†	90.000	179.434	6201.00	9846.17	-9821.08	-708.19	40°23'50.313"N	104°17'58.748"W	0.00	
16017.00†	90.000	179.434	6201.00	9945.91	-9921.07	-707.20	40°23'49.325"N	104°17'58.735"W	0.00	
16117.00†	90.000	179.434	6201.00	10045.64	-10021.07	-706.21	40°23'48.336"N	104°17'58.723"W	0.00	
16217.00†	90.000	179.434	6201.00	10145.38	-10121.06	-705.22	40°23'47.348"N	104°17'58.710"W	0.00	
16317.00†	90.000	179.434	6201.00	10245.11	-10221.06	-704.23	40°23'46.360"N	104°17'58.697"W	0.00	
16417.00†	90.000	179.434	6201.00	10344.85	-10321.05	-703.24	40°23'45.372"N	104°17'58.684"W	0.00	
16517.00†	90.000	179.434	6201.00	10444.58	-10421.05	-702.25	40°23'44.384"N	104°17'58.671"W	0.00	
16617.00†	90.000	179.434	6201.00	10544.32	-10521.05	-701.27	40°23'43.396"N	104°17'58.659"W	0.00	
16717.00†	90.000	179.434	6201.00	10644.05	-10621.04	-700.28	40°23'42.408"N	104°17'58.646"W	0.00	
16817.00†	90.000	179.434	6201.00	10743.79	-10721.04	-699.29	40°23'41.420"N	104°17'58.633"W	0.00	
16917.00†	90.000	179.434	6201.00	10843.53	-10821.03	-698.30	40°23'40.432"N	104°17'58.620"W	0.00	
17017.00†	90.000	179.434	6201.00	10943.26	-10921.03	-697.31	40°23'39.443"N	104°17'58.607"W	0.00	
17117.00†	90.000	179.434	6201.00	11043.00	-11021.02	-696.32	40°23'38.455"N	104°17'58.594"W	0.00	
17148.77	90.000	179.434	6201.00 ²	11074.68	-11052.79	-696.01	40°23'38.141"N	104°17'58.590"W	0.00	End of Tangent (XS)



Planned Wellpath Report

STATE ANTELOPE E-2-14XRLNB PWP (REV-A.0)

Page 8 of 10



REFERENCE WELLPATH IDENTIFICATION			
Operator	BONANZA CREEK OIL COMPANY	Slot	SLOT#16 STATE ANTELOPE E-2-14XRLNB (798'FSL & 811'FWL, SEC.02)
Area	COLORADO	Well	STATE ANTELOPE E-2-14XRLNB
Field	WELD COUNTY	Wellbore	STATE ANTELOPE E-2-14XRLNB PWB
Facility	SEC.02-T5N-R62W		

HOLE & CASING SECTIONS									
- Ref Wellbore: STATE ANTELOPE E-2-14XRLNB PWB					Ref Wellpath: STATE ANTELOPE E-2-14XRLNB PWP (REV-A.0)				
String/Diameter	Start MD [ft]	End MD [ft]	Interval [ft]	Start TVD [ft]	End TVD [ft]	Start N/S [ft]	Start E/W [ft]	End N/S [ft]	End E/W [ft]
9.625in Casing Surface	17.00	1550.00	1533.00	17.00	1550.00	0.00	0.00	0.00	0.00
8.5in Open Hole	1550.00	17148.77	15598.77	1550.00	6201.00	0.00	0.00	-11052.79	-696.01

TARGETS									
Name	MD [ft]	TVD [ft]	North [ft]	East [ft]	Grid East [US ft]	Grid North [US ft]	Latitude	Longitude	Shape
*SEC.02-T05N-R62W		17.00	3154.26	-481.38	3334363.11	1402819.53	40°25'58.530"N	104°17'55.820"W	polygon
*SEC.11-T05N-R62W		17.00	-11016.31	350.50	3335387.09	1388662.13	40°23'38.502"N	104°17'45.065"W	polygon
*SEC.14-T05N-R62W		17.00	-11016.31	350.50	3335387.09	1388662.13	40°23'38.502"N	104°17'45.065"W	polygon
*SEC.11/14-T05N-R62W HARDLINES (460'SETBACK)		6201.00	-11016.31	350.50	3335387.09	1388662.13	40°23'38.502"N	104°17'45.065"W	polygon
2) STATE ANTELOPE E-2-14XRLNB BHL (470'FSL&10'FWL,SEC.14)	17148.77	6201.00	-11052.79	-696.01	3334341.21	1388611.46	40°23'38.141"N	104°17'58.590"W	point
1) STATE ANTELOPE E-2-14XRLNB LP (330'FSL&10'FWL,SEC.02)	6604.91	6201.00	-509.44	-800.24	3334093.98	1399151.99	40°25'22.327"N	104°17'59.942"W	point
STATE ANTELOPE E-2-14XRLNB MP (0'FSL&10'FWL,SEC.11)		6201.00	-6135.02	-793.25	3334177.28	1393527.26	40°24'26.737"N	104°17'59.849"W	point



Planned Wellpath Report

STATE ANTELOPE E-2-14XRLNB PWP (REV-A.0)

Page 9 of 10



REFERENCE WELLPATH IDENTIFICATION			
Operator	BONANZA CREEK OIL COMPANY	Slot	SLOT#16 STATE ANTELOPE E-2-14XRLNB (798'FSL & 811'FWL, SEC.02)
Area	COLORADO	Well	STATE ANTELOPE E-2-14XRLNB
Field	WELD COUNTY	Wellbore	STATE ANTELOPE E-2-14XRLNB PWB
Facility	SEC.02-T5N-R62W		

SURVEY PROGRAM - Ref Wellbore: STATE ANTELOPE E-2-14XRLNB PWB Ref Wellpath: STATE ANTELOPE E-2-14XRLNB PWP (REV-A.0)				
Start MD [ft]	End MD [ft]	Positional Uncertainty Model	Log Name/Comment	Wellbore
17.00	1550.00	Custom BHI NaviTrak (Standard Rotating+Axial Corr) (Rockies 0.03Gt model)		STATE ANTELOPE E-2-14XRLNB PWB
1550.00	17194.89	Custom BHI AutoTrak Curve (Axial Corr, Short spacing) (Rockies 0.03Gt model)		STATE ANTELOPE E-2-14XRLNB PWB



Planned Wellpath Report

STATE ANTELOPE E-2-14XRLNB PWP (REV-A.0)

Page 10 of 10



REFERENCE WELLPATH IDENTIFICATION			
Operator	BONANZA CREEK OIL COMPANY	Slot	SLOT#16 STATE ANTELOPE E-2-14XRLNB (798'FSL & 811'FWL, SEC.02)
Area	COLORADO	Well	STATE ANTELOPE E-2-14XRLNB
Field	WELD COUNTY	Wellbore	STATE ANTELOPE E-2-14XRLNB PWB
Facility	SEC.02-T5N-R62W		

DESIGN COMMENTS				
MD [ft]	Inclination [°]	Azimuth [°]	TVD [ft]	Comment
17.00	0.000	275.309	17.00	Tie On
1800.00	0.000	275.309	1800.00	End of Tangent
2355.47	11.109	275.309	2352.00	End of Build (XS)
5693.61	11.109	275.309	5627.58	End of Tangent (XS)
6604.91	90.000	179.434	6201.00	End of 3D Arc (XS)
17148.77	90.000	179.434	6201.00	End of Tangent (XS)