



Radial Cement Bond
Gamma Ray
Casing Collar Log

Company Kerr-McGee Oil & Gas Onshore, L.P.

Well Newby 22-33

Field Wattenberg

County Weld State Colorado

Location: API #: 0512329551

SEC 33 TWP 3N RGE 68W

Other Services
4.5 CIBP

Permanent Datum

Ground Level

Elevation

4925'

K.B. 4940 FT
D.F. ---
G.L. 4925 FT

Log Measured From

Kelly Bushing

15 FT

Drilling Measured From

Kelly Bushing

All interpretations are opinions based on inferences from electrical or other measurements and we cannot and do not guarantee the accuracy or correctness of any interpretation, and we shall not, except in the case of gross or willful negligence on our part, be liable or responsible for any loss, costs, damages, or expenses incurred or sustained by anyone resulting from any interpretation made by any of our officers, agents or employees. These interpretations are also subject to our general terms and conditions set out in our current Price Schedule.

Comments

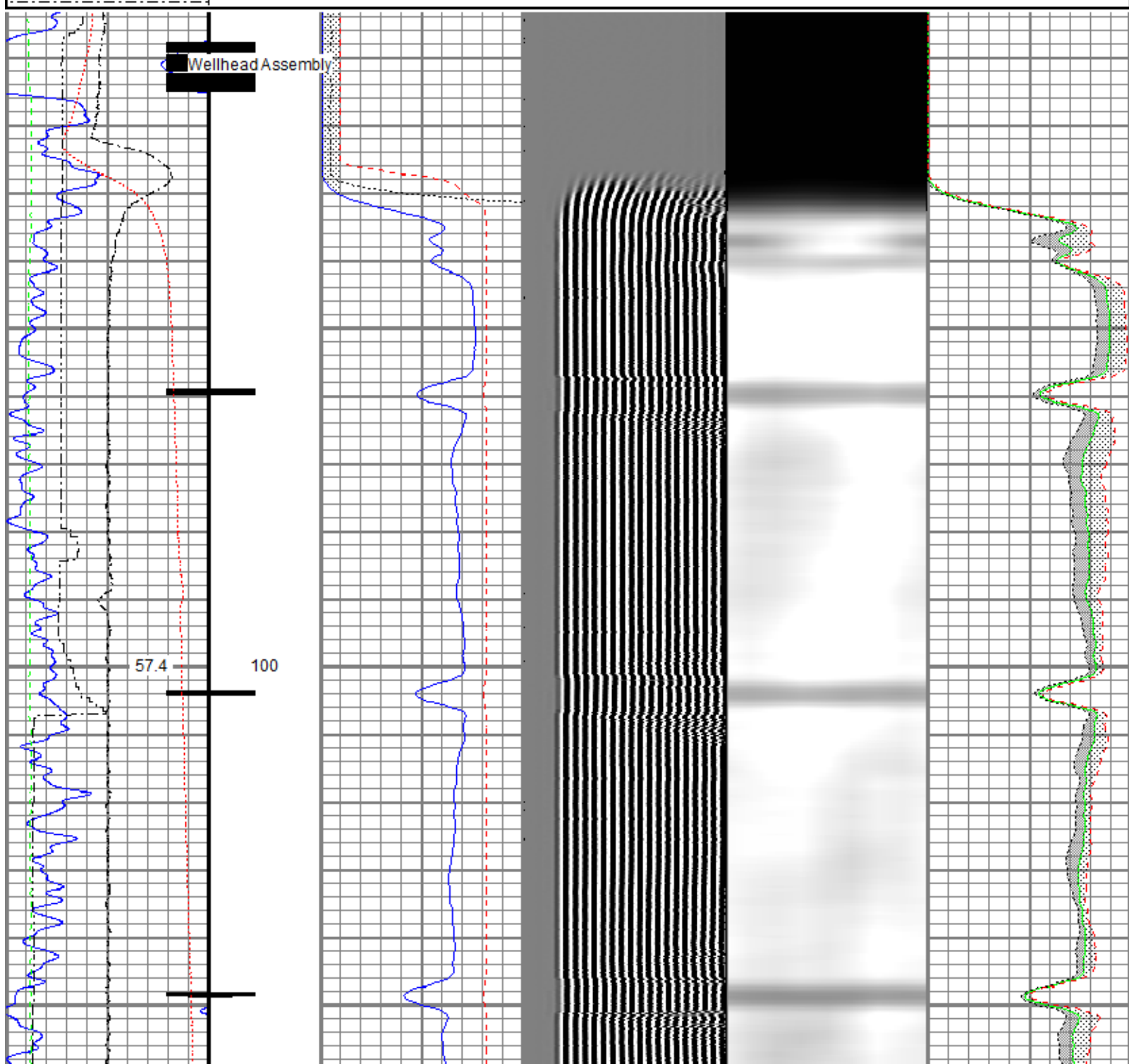
Log ran as per customer request
Depth referenced to Kelly Bushing at 15 FT
Adjusted +1 FT to correlate with Kelly Bushing
Log ran from 3275 FT to Surface
Log ran with -0- PSI surface induced pressure
Logging tools were clean and free of any debris upon completion of operations <or list debris found>
Thank you for choosing Reliance Oilfield Services, LLC!!

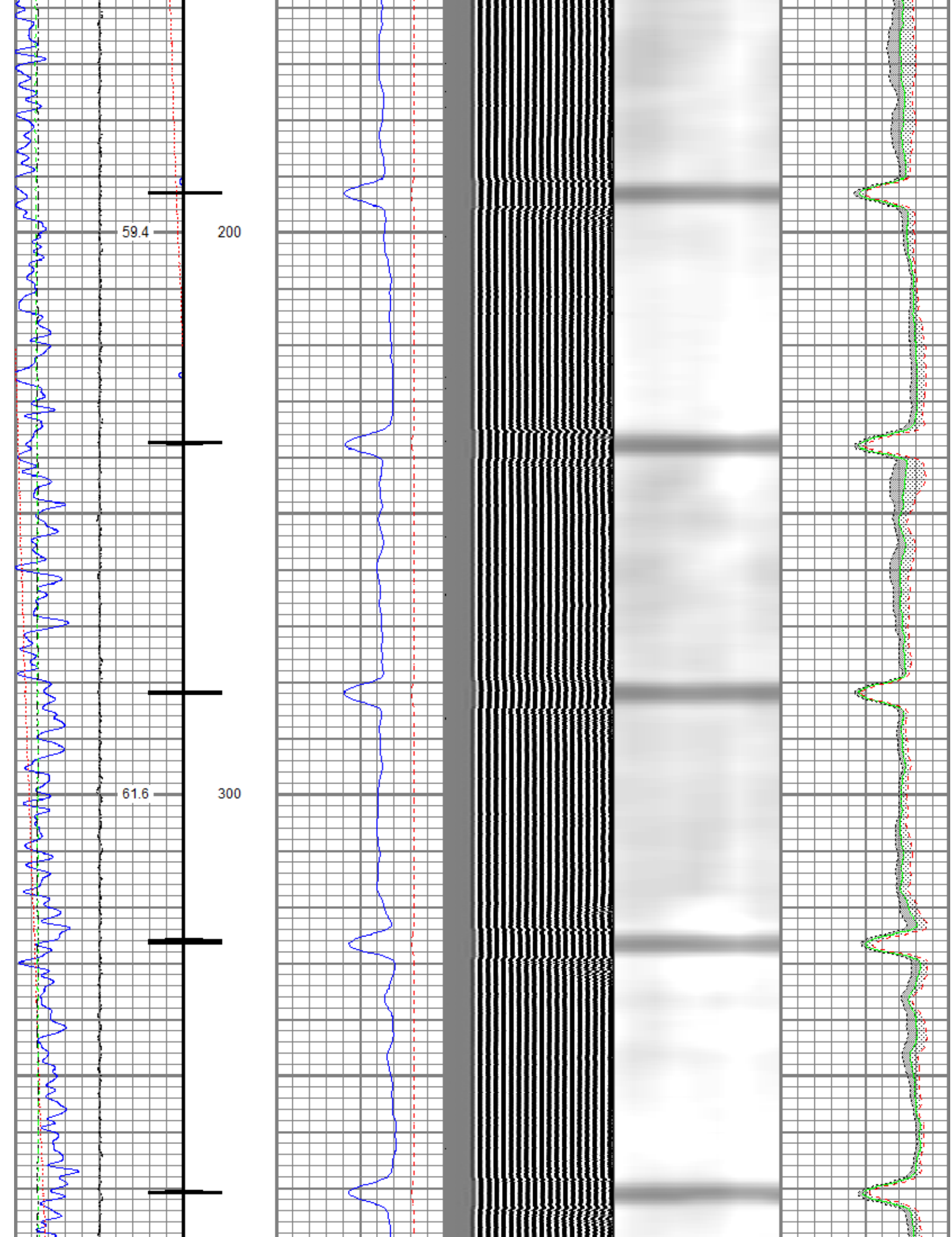
Main Pass

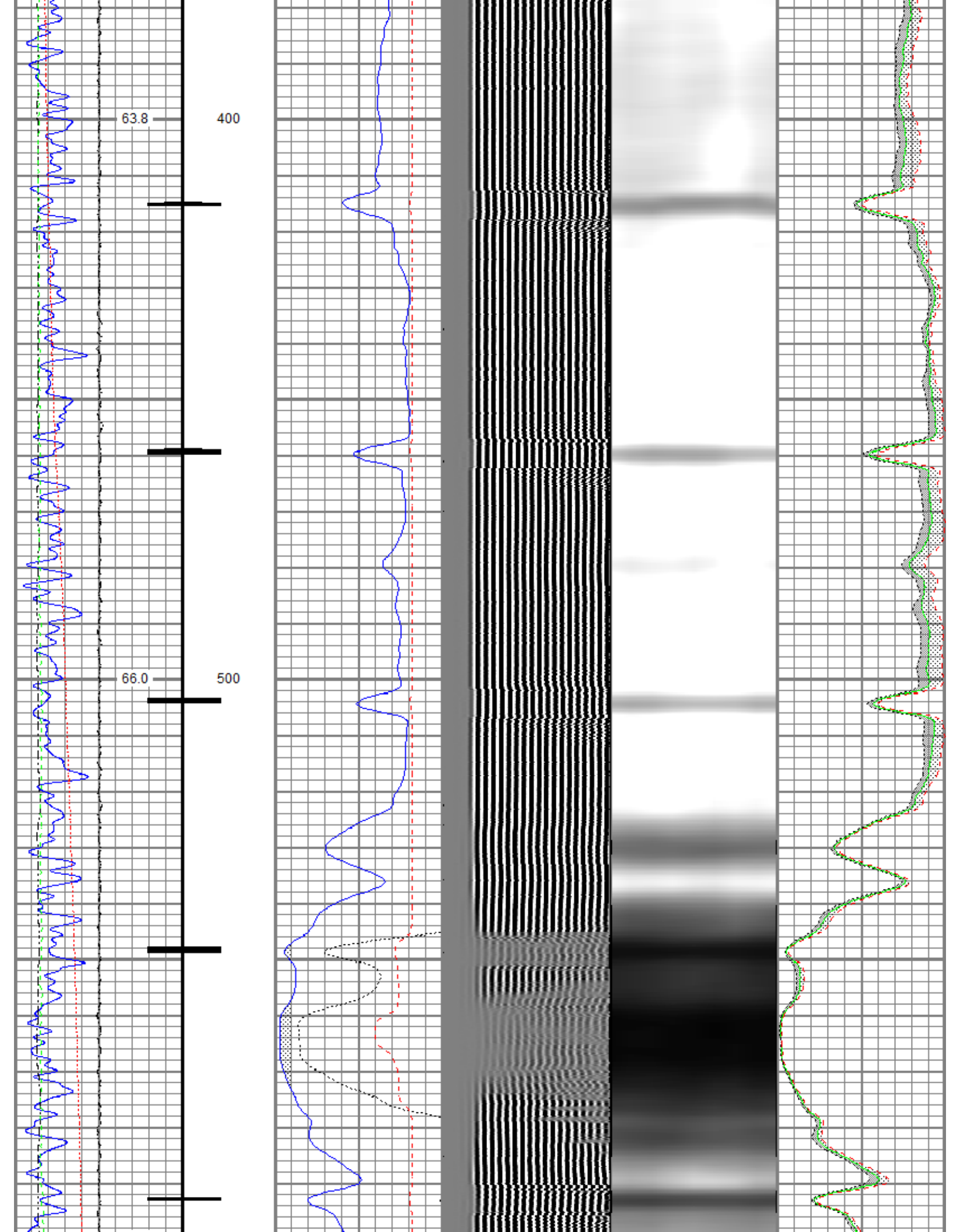


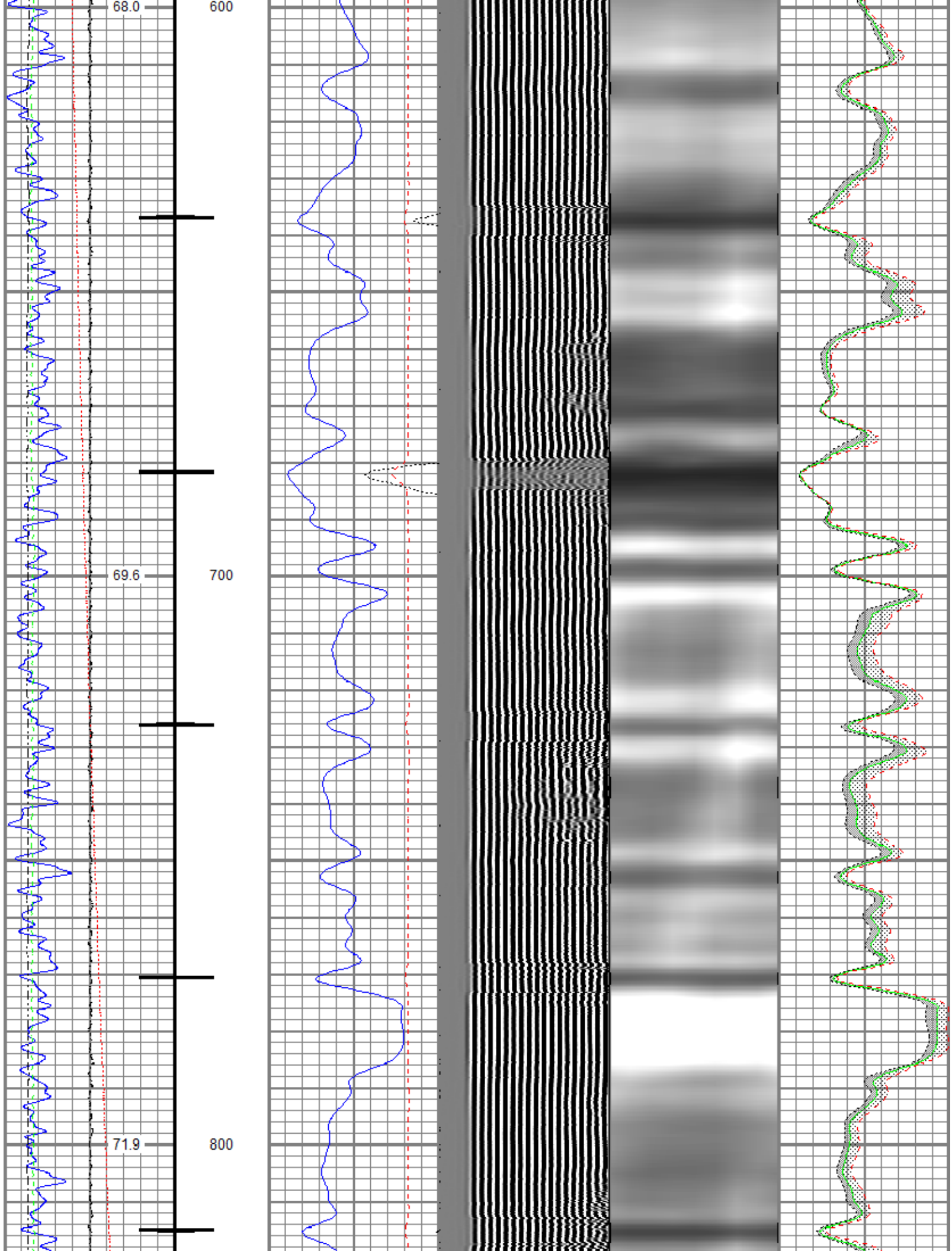
Database File anadarko_newby_22-33_rcbl_6-april-2018.db
Dataset Pathname main.1
Presentation Format ros_radri_vert
Dataset Creation Fri Apr 06 14:09:45 2018
Charted by Depth in Feet scaled 1:240

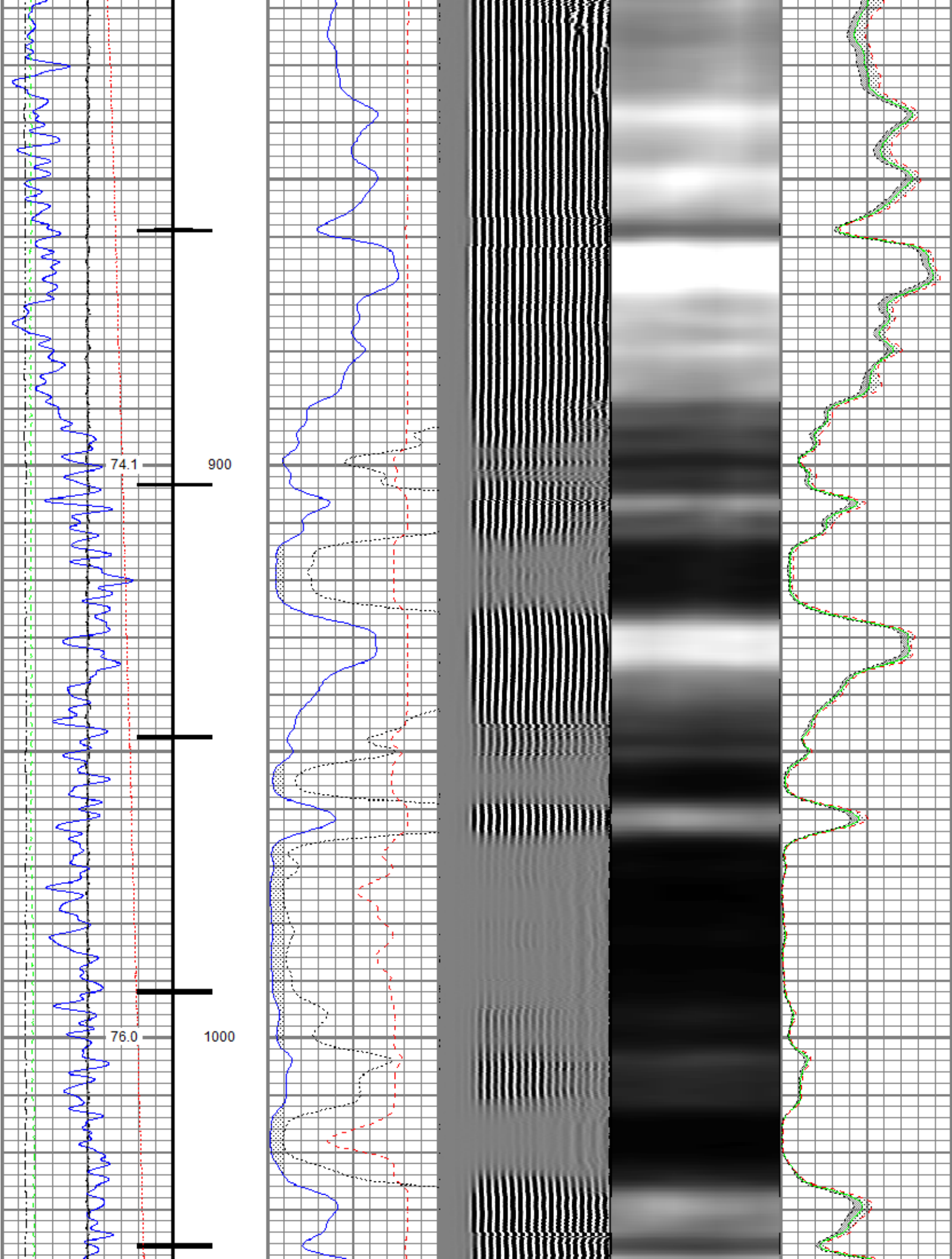
Gamma Ray	0	3' Amplitude (mV)	100	5' Variable Density Log	Sector Map	0	Average Amplitude	100
30 (GAPI) 130		3' Amplitude x 5		200 (usec) 1200			Minimum Amplitude	
Casing Collar Locator	0	(mV)	20			0		100
0 Temperature (degF) 20		3' Travel Time					Maximum Amplitude	
Line Speed	650	(usec)	150			0		100
-150 (ft/min) 150								
0 Line Tension (lb) 2000								
Differential Temperature								
-2 (degF) 2								

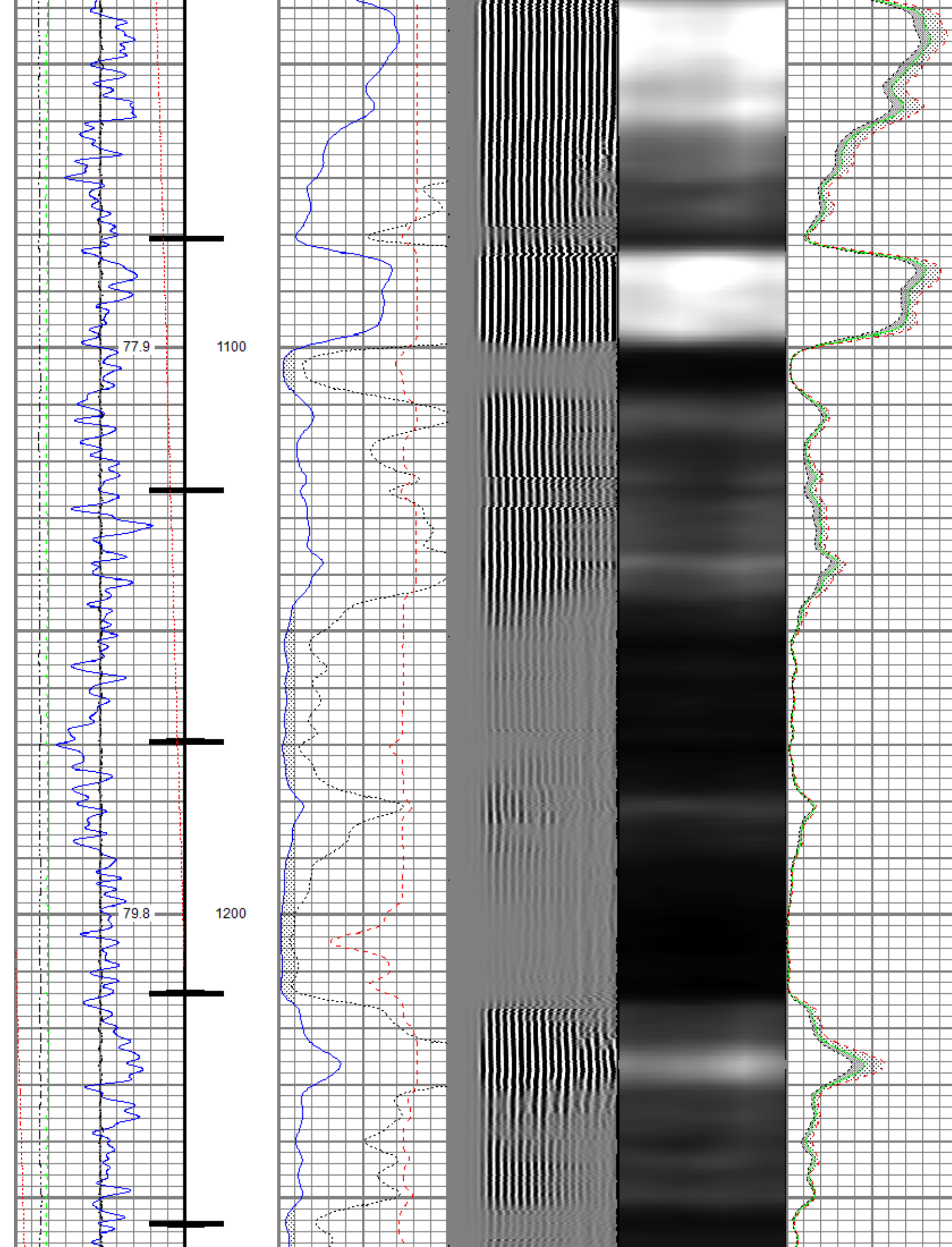


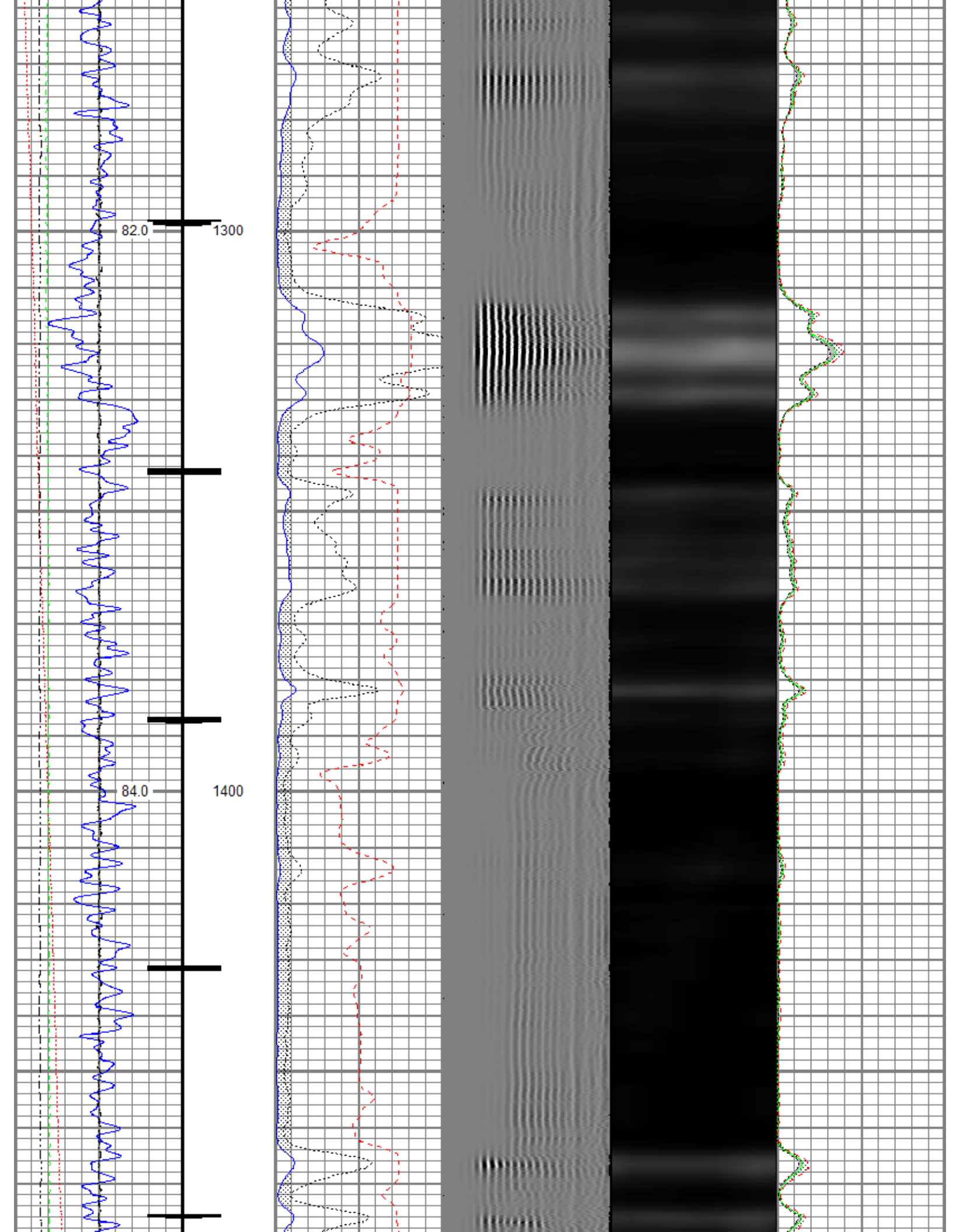


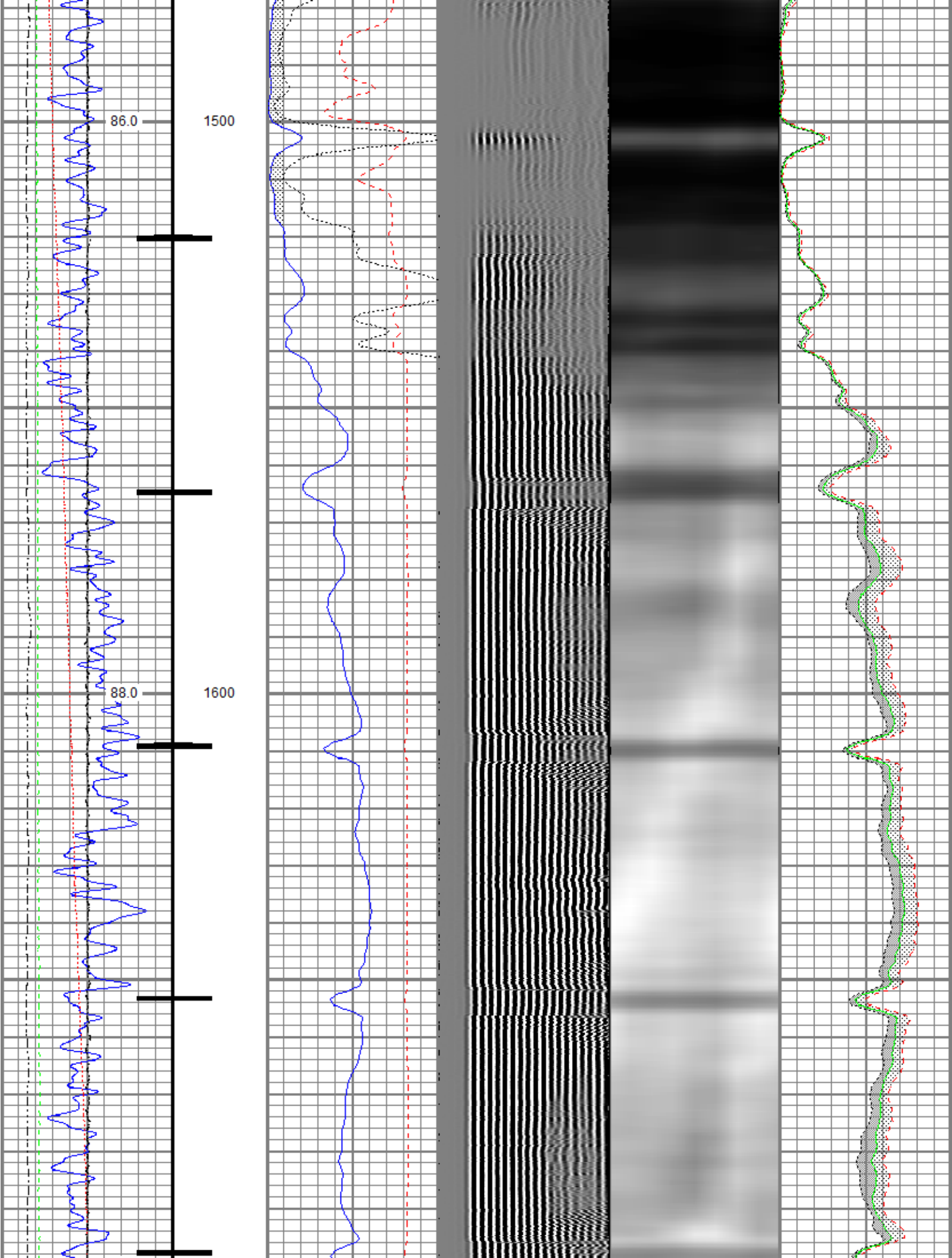


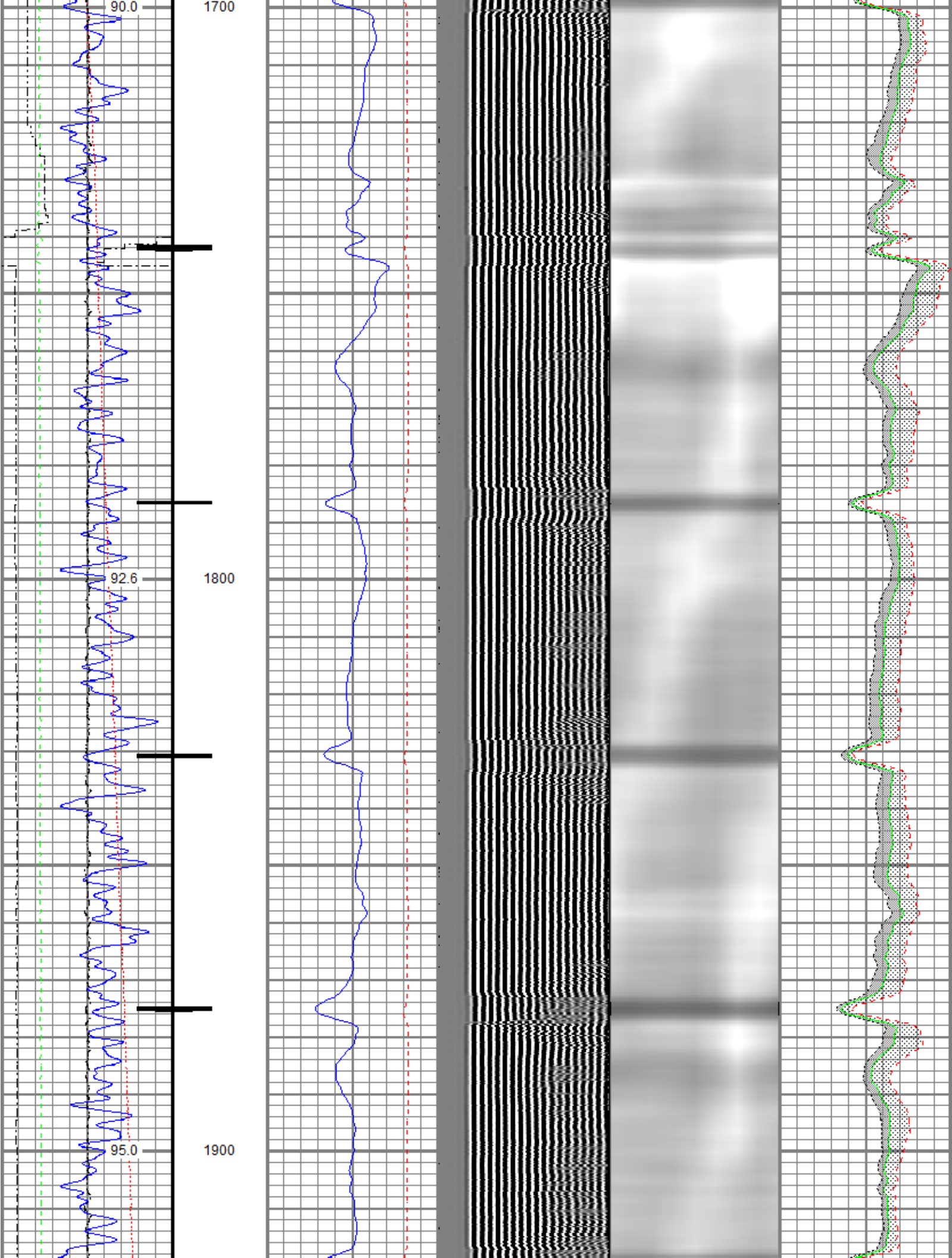


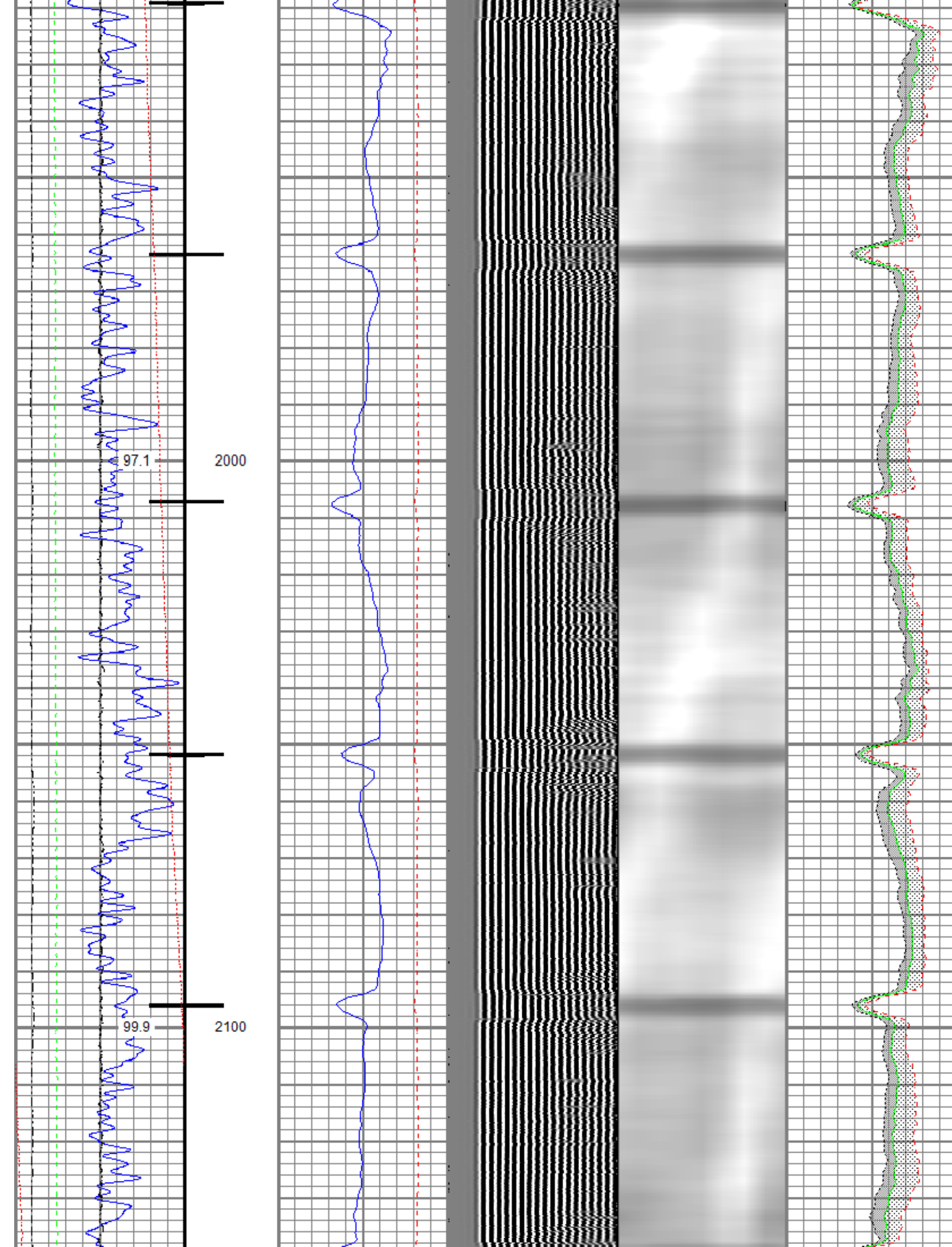


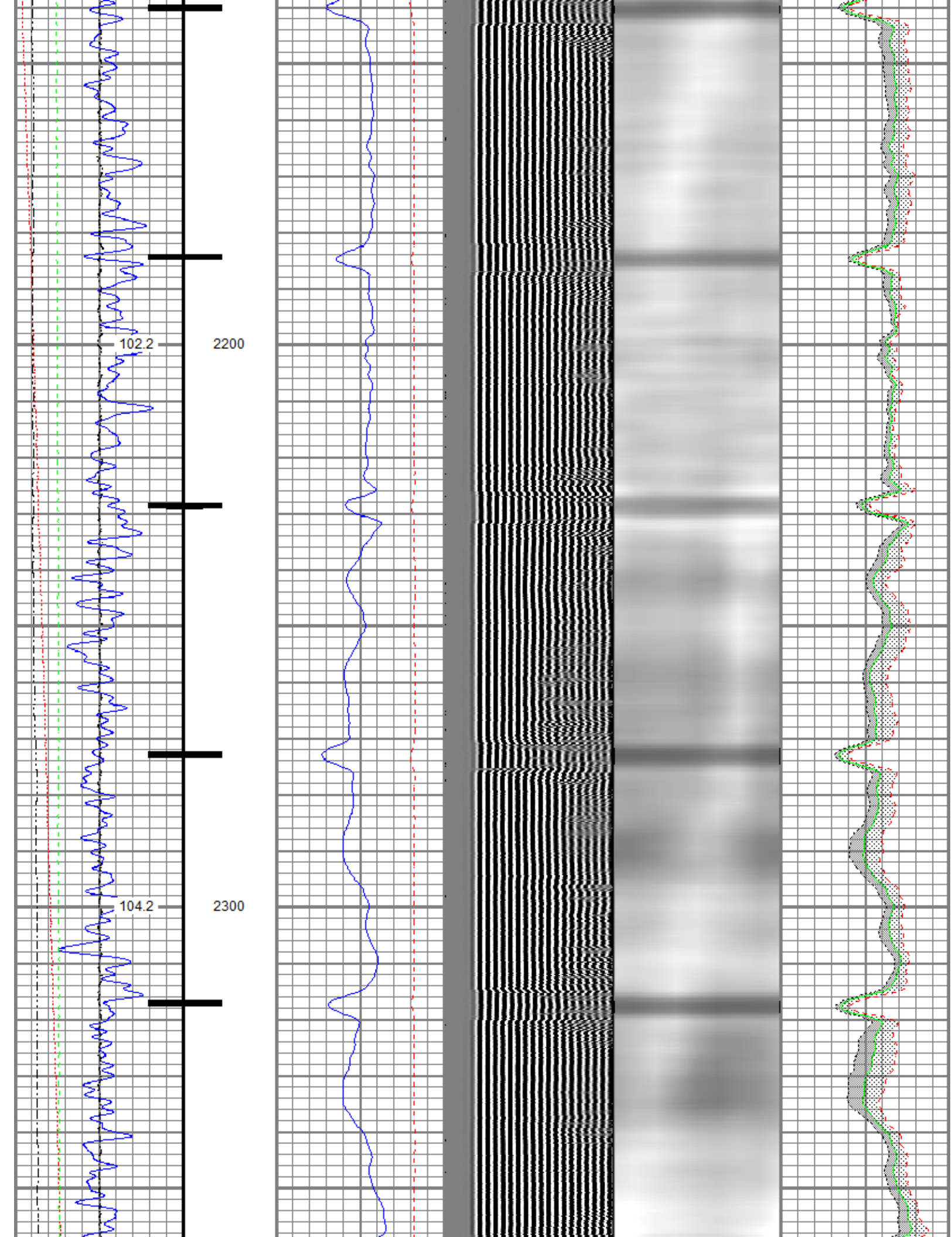


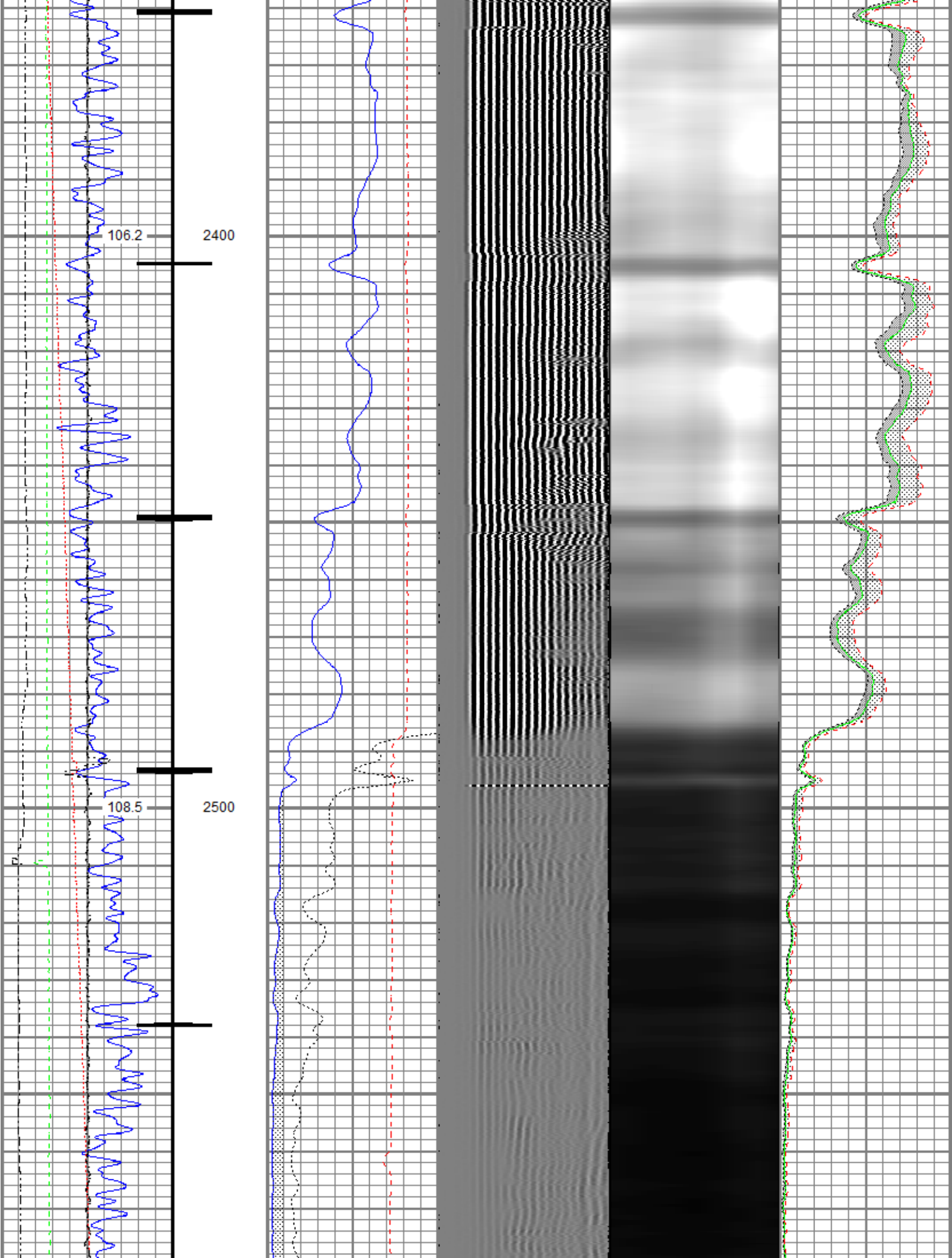


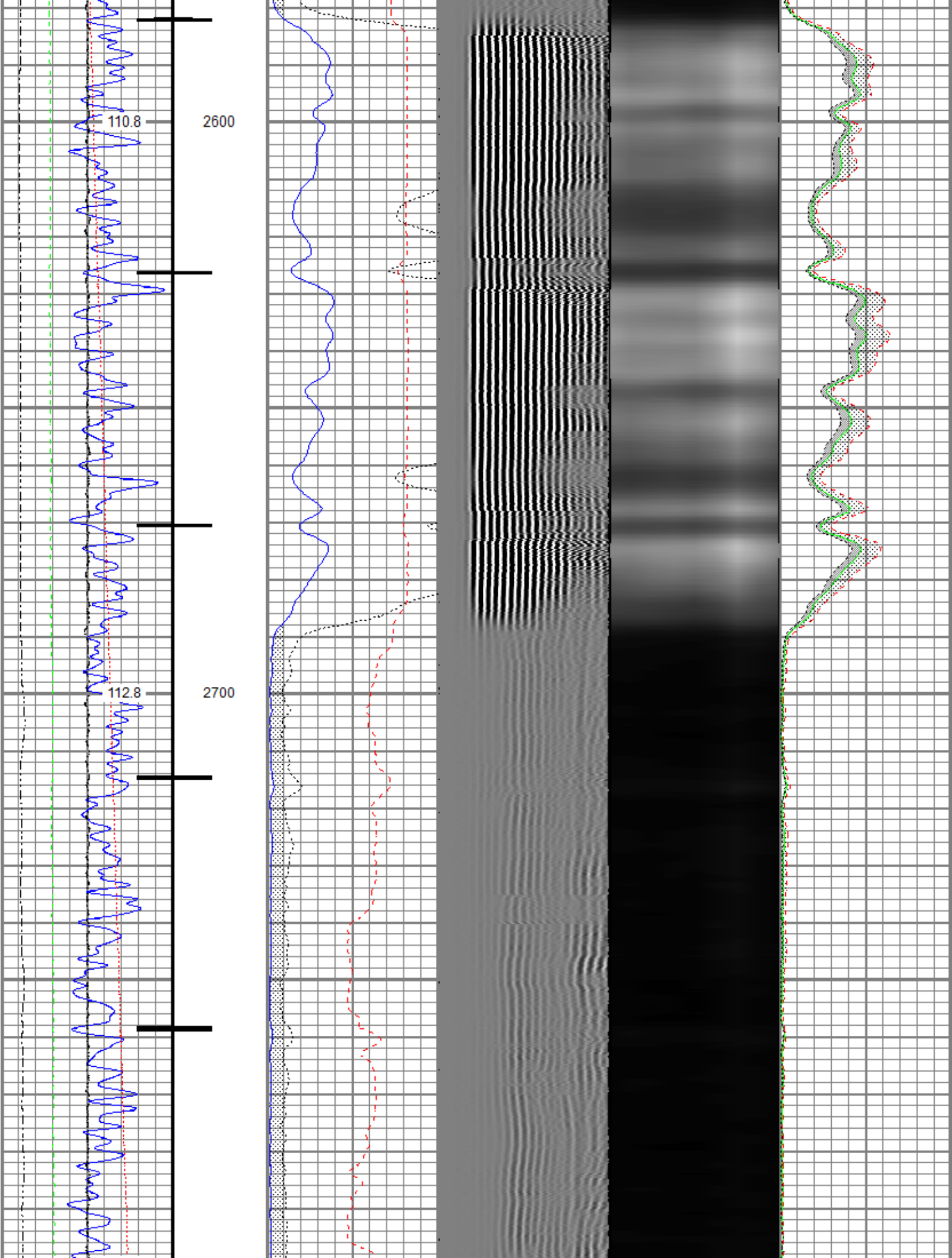


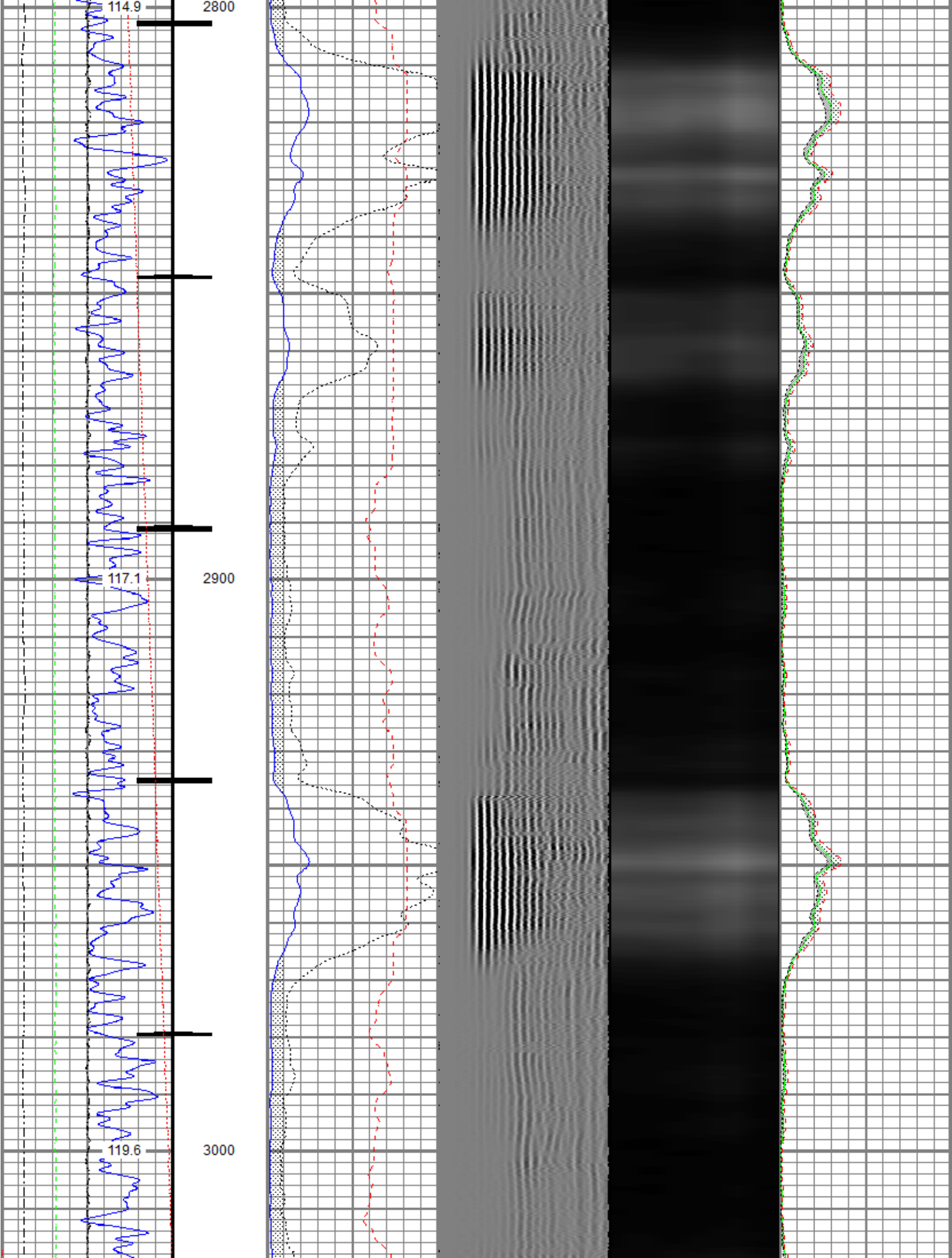


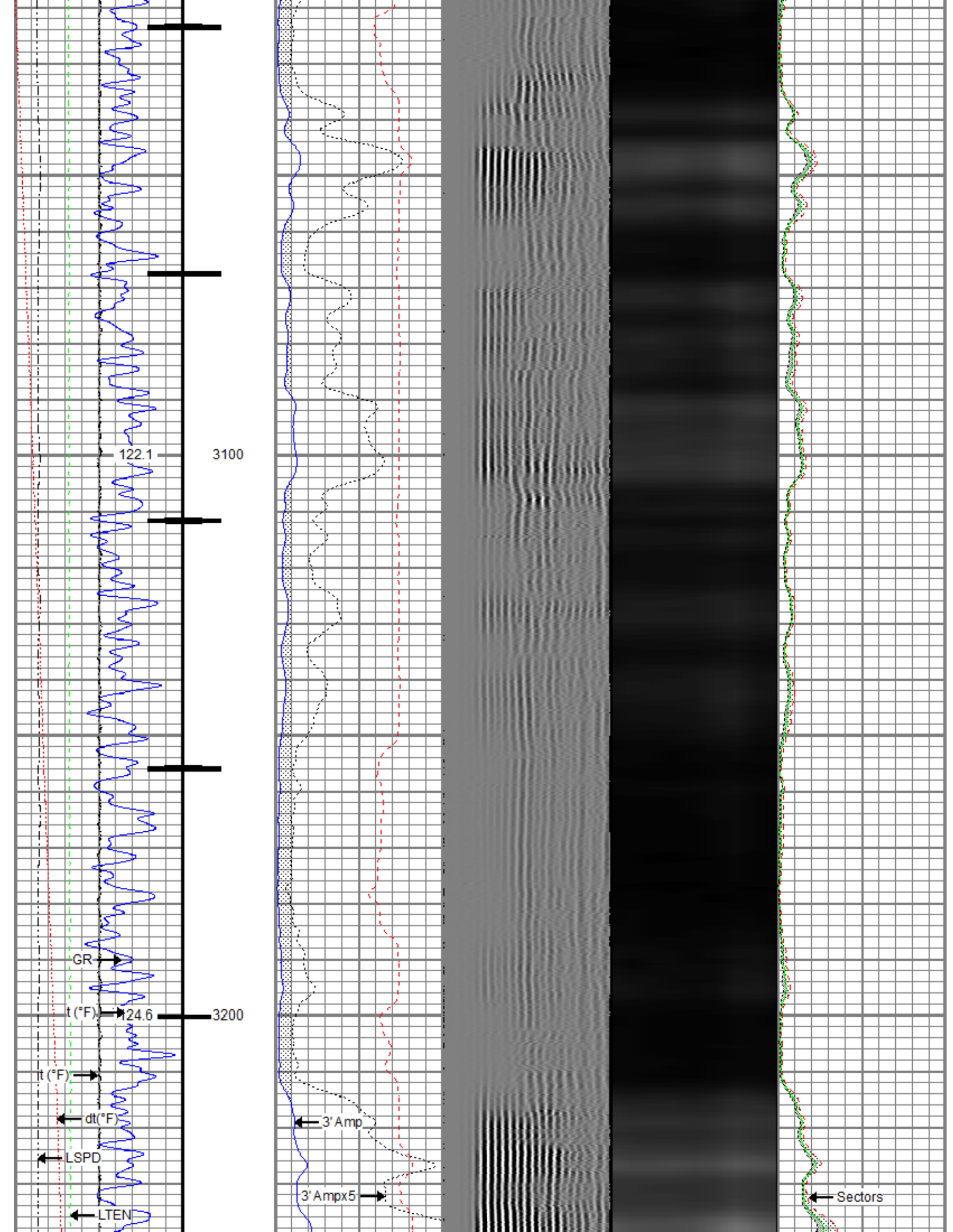


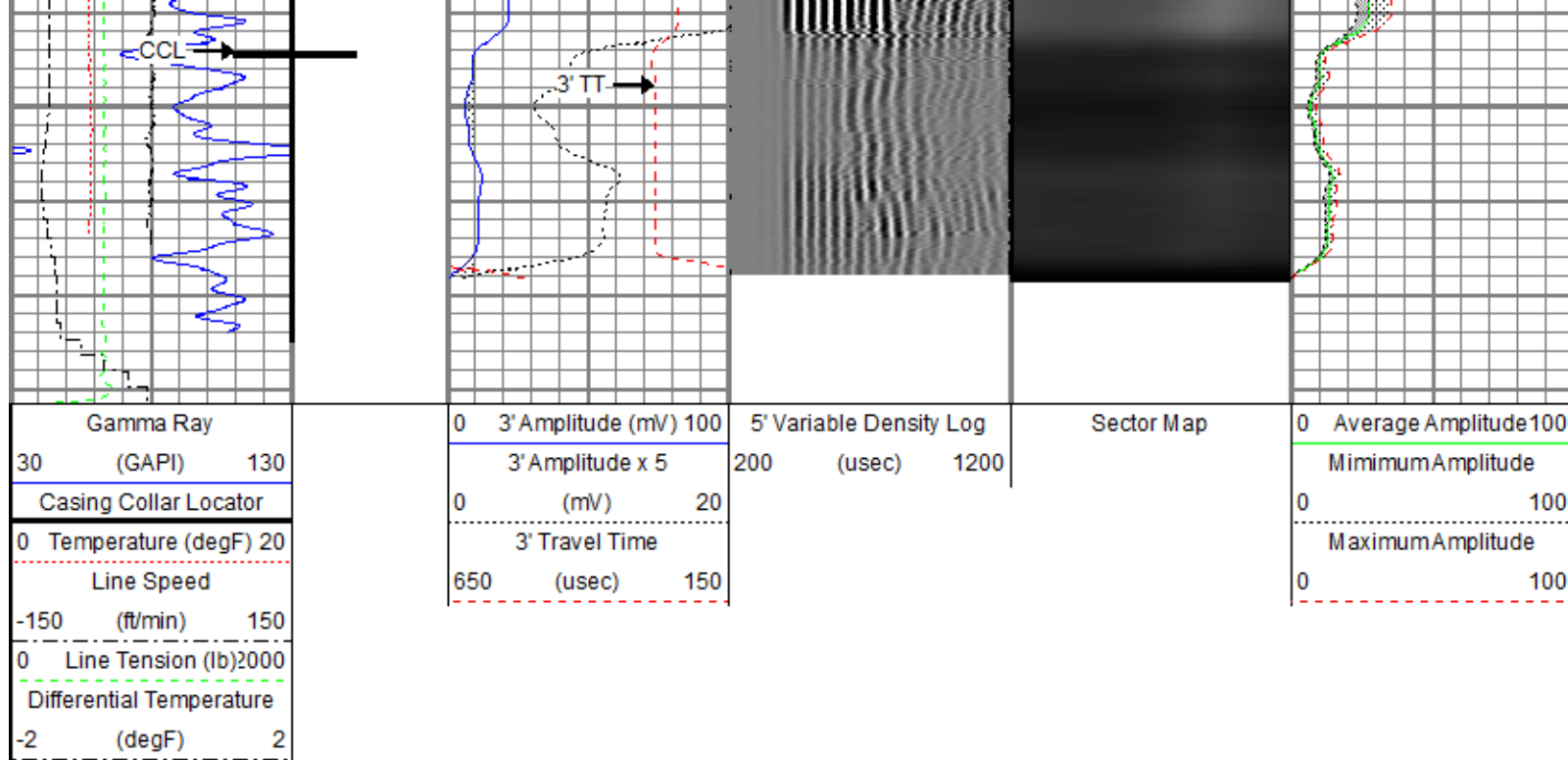








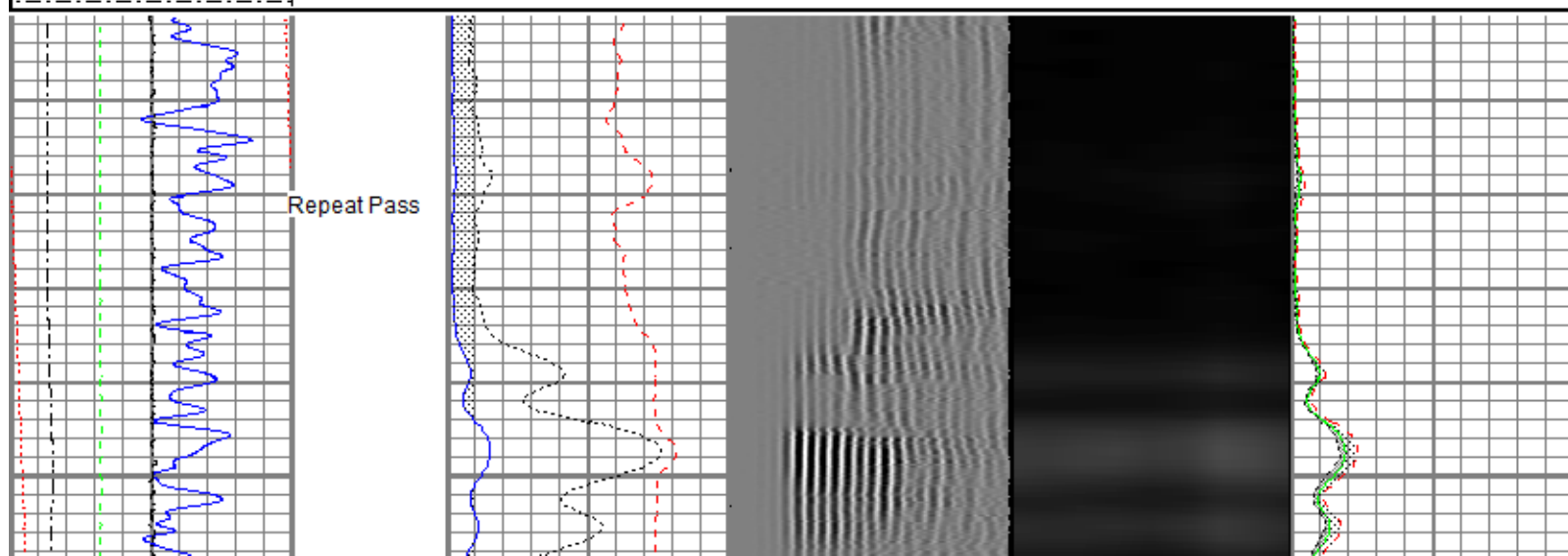
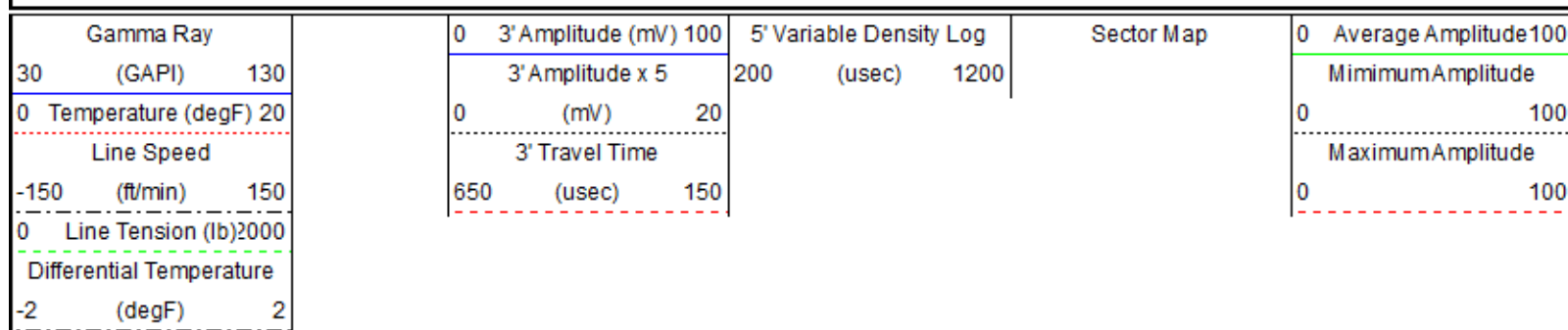


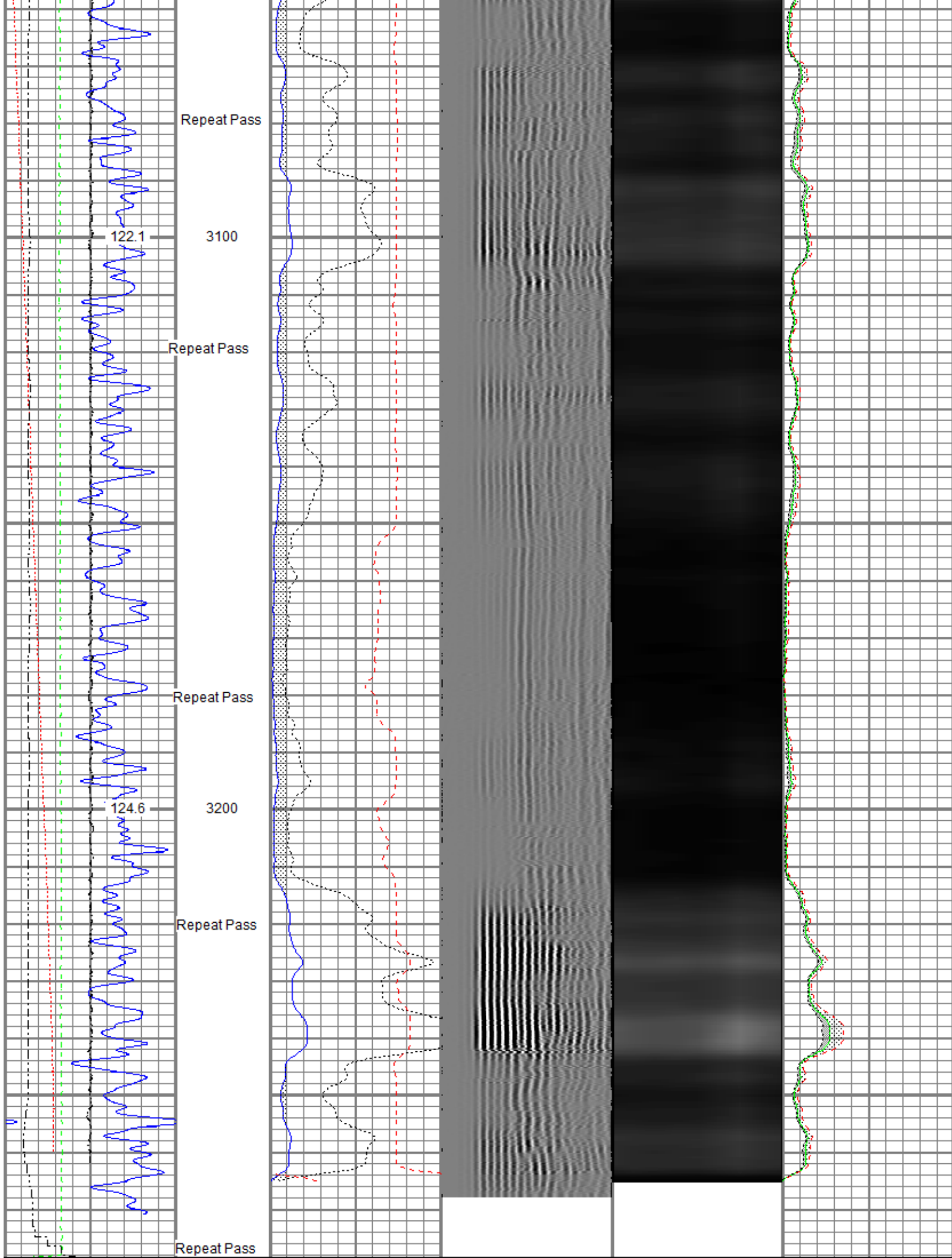


Repeat Section

Recorded With No Surface Induced Pressure

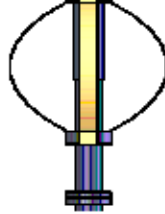
Database File: anadarko_newby_22-33_rcbl_6-april-2018.db
 Dataset Pathname: repeat1
 Presentation Format: ros_radil_vert
 Dataset Creation: Fri Apr 06 14:13:30 2018
 Charted by: Depth in Feet scaled 1:240





Gamma Ray	0	3' Amplitude (mV)	100	5' Variable Density Log	Sector Map	0	Average Amplitude	100
30 (GAPI)	130	3' Amplitude x 5	200	(usec)	1200		Minimum Amplitude	
0 Temperature (degF)	20	0 (mV)	20			0		100
Line Speed		3' Travel Time					Maximum Amplitude	
-150 (ft/min)	150	650 (usec)	150			0		100
0 Line Tension (lb)	2000							
Differential Temperature								
-2 (degF)	2							

Sensor	Offset (ft)	Schematic	Description	Length (ft)	O.D. (in)	Weight (lb)
TEMP	16.75		Titan CHD-14375 GO Titan 1-7/16" Assembled Electric Cable Head w/ 1" Fishing Neck	1.03	1.44	3.60
			Probe CENT-2750 Probe 2-3/4" Electric Inline Bowspring Centralizer	2.88	2.75	20.00
			Probe Radii-2750 RBT (FW0712-020) Probe 2-3/4" Radial Cement Bond Tool with Integral Temperature Sub	9.39	2.75	105.00
WVFS8	14.52					
WVFS7	14.52					
WVFS6	14.52					
WVFS5	14.52					
WVFS4	14.52					
WVFS3	14.52					
WVFS2	14.52					
WVFS1	14.52					
WVFCAL	14.52					
WVF3FT	14.52					
WVF5FT	13.52					
			Probe CENT-2750 Probe 2-3/4" Electric Inline Bowspring Centralizer	2.88	2.75	20.00
CCL\$2	6.51					
CCL\$1	6.51					
GR	5.26		Probe GR-CCL-2750 GOB (FW1212-026) Probe 2-3/4" rev.2 Digital Scintillation Gamma Ray/CCL Combined	4.51	2.75	55.00



Probe CENT-2750
Probe 2-3/4" Electric Inline Bowspring Centralizer

2.88

2.75

20.00

Dataset: anadarko_newby_22-33_rcbl_6-april-2018.db: field/well/run1/main.1
Total length: 23.57 ft
Total weight: 223.60 lb
O.D.: 2.75 in

Calibration Report

Database File anadarko_newby_22-33_rcbl_6-april-2018.db
Dataset Pathname repeat1
Dataset Creation Fri Apr 06 14:13:30 2018

Gamma Ray Calibration Report

Serial Number: FW1212-026
Tool Model: 2750 GOB
Performed: Sun Nov 12 12:27:51 2017

Calibrator Value: 637.0 GAPI

Background Reading: 113.7 cps
Calibrator Reading: 1029.1 cps

Sensitivity: 0.6959 GAPI/cps

Segmented Cement Bond Log Calibration Report

Serial Number: FW0712-020
Tool Model: 2750 RBT

Calibration Casing Diameter: 4.500 in
Calibration Depth: 797.704 ft

Master Calibration, performed (Derived):

	Raw (v)		Calibrated (mv)		Results	
	Zero	Cal	Zero	Cal	Gain	Offset
3'	0.002	0.737	0.800	81.196	109.310	0.604
CAL	0.636	0.638				
5'	0.001	0.677	0.800	81.196	118.847	0.708
SUM						
S1	0.002	0.737	0.000	100.000	136.071	-0.227
S2	-0.000	0.786	0.000	100.000	127.274	0.006
S3	0.002	0.800	0.000	100.000	125.310	-0.206
S4	0.002	0.798	0.000	100.000	125.660	-0.247
S5	0.002	0.818	0.000	100.000	122.590	-0.232
S6	0.002	0.808	0.000	100.000	124.132	-0.269
S7	0.002	0.753	0.000	100.000	133.199	-0.252
S8	0.002	0.736	0.000	100.000	136.135	-0.217


Internal Reference Calibration, performed (Not Performed):

	Raw (v)		Calibrated (v)		Results	
	Zero	Cal	Zero	Cal	Gain	Offset
CAL	0.000	0.000	0.636	0.638	1.000	0.000

Air Zero Calibration, performed Fri Apr 06 13:05:31 2018:

	Raw (v)	Calibrated (v)	Results
	Zero	Zero	Offset
3'	0.000	0.000	0.000
5'	0.000	0.000	0.000
SUM			
S1	0.000	0.000	0.000
S2	0.000	0.000	0.000
S3	0.000	0.000	0.000
S4	0.000	0.000	0.000
S5	0.000	0.000	0.000
S6	0.000	0.000	0.000
S7	0.000	0.000	0.000
S8	0.000	0.000	0.000

Temperature Calibration Report				
Serial Number:	FW0712-020			
Tool Model:	2750 RBT			
Performed:	Thu Dec 21 07:48:40 2017			
	Reference		Reading	
Low Reference:	100.00 degF		109.43 degF	
High Reference:	350.00 degF		405.87 degF	
Gain:	0.84			
Offset:	7.72			
Delta Spacing	1			

	Company	Kerr-McGee Oil & Gas Onshore, L.P.
	Well	Newby 22-33
	Field	Wattenberg
	County	Weld
	State	Colorado