

BONANZA CREEK OIL COMPANY

Location: COLORADO Slot: SLOT#02 PRONGHORN F-J-18HNB (428'FNL & 1405'FWL, SEC.18)
 Field: WELD COUNTY Well: PRONGHORN F-J-18HNB
 Facility: SEC.18-T05N-R61W Wellbore: PRONGHORN F-J-18HNB PWB

Plot reference wellpath is PRONGHORN F-J-18HNB PWP (REV-A.0)		Grid System: NAD83 / Lambert Colorado SP, Northern Zone (501), US feet
True vertical depths are referenced to RIG (17KB) (RKB)		* = Wellpath was transformed from a different geoidic datum
Measured depths are referenced to RIG (17KB) (RKB)		North Reference: True north
RIG (17KB) (RKB) to Mean Sea Level: 4582 feet		Scale: True distance
Mean Sea Level to Mud line (At Slot: SLOT#02 PRONGHORN F-J-18HNB (428'FNL & 1405'FWL, SEC.18)): 0 feet		Depths are in feet
Coordinates are in feet referenced to Slot		Created by: ingmjmr on 2018-02-08
		Database: Denver

Location Information

Facility Name		Grid East (US ft)	Grid North (US ft)	Latitude	Longitude	
SEC.18-T05N-R61W		3346203.650	1393657.633	40°24'26.388"N	104°15'24.372"W	
Slot	Local N (ft)	Local E (ft)	Grid East (US ft)	Grid North (US ft)	Latitude	Longitude
SLOT#02 PRONGHORN F-J-18HNB (428'FNL & 1405'FWL, SEC.18)	0.00	-22.28	3346181.374	1393657.321	40°24'26.388"N	104°15'24.660"W
RIG (17KB) (RKB) to Mud line (At Slot: SLOT#02 PRONGHORN F-J-18HNB (428'FNL & 1405'FWL, SEC.18))					4582ft	
Mean Sea Level to Mud line (At Slot: SLOT#02 PRONGHORN F-J-18HNB (428'FNL & 1405'FWL, SEC.18))					0ft	
RIG (17KB) (RKB) to Mean Sea Level					4582ft	

Well Profile Data

Design Comment	MD (ft)	Inc (°)	Az (°)	TVD (ft)	Local N (ft)	Local E (ft)	DLS (°/100ft)	VS (ft)
Tie On	17.00	0.000	346.641	17.00	0.00	0.00	0.00	0.00
End of Tangent	1700.00	0.000	346.641	1700.00	0.00	0.00	0.00	0.00
End of Build (XS)	2149.83	8.997	346.641	2147.98	34.29	-8.14	2.00	-34.16
End of Tangent (XS)	5444.30	8.997	346.641	5401.92	535.52	-127.18	0.00	-533.57
End of 3D Arc (XS)	6432.14	90.000	179.058	6062.00	-31.01	-140.33	10.00	33.09
End of Tangent (XS)	10901.00	90.000	179.058	6062.00	-4499.25	-66.85	0.00	4499.75

Hole and Casing Sections

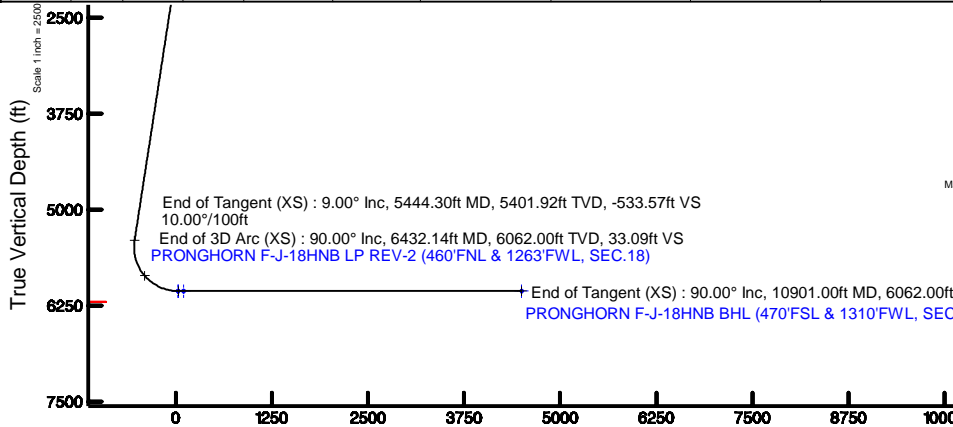
Name	Start MD (ft)	End MD (ft)	Interval (ft)	Start TVD (ft)	End TVD (ft)	Start Local N (ft)	Start Local E (ft)	End Local N (ft)	End Local E (ft)	Wellbore
9.625in Casing Surface	17.00	1550.00	1533.00	17.00	1550.00	0.00	0.00	0.00	0.00	PRONGHORN F-J-18HNB PWB
8.5in Open Hole	1550.00	10901.00	9351.00	1550.00	N/A	0.00	0.00	N/A	N/A	PRONGHORN F-J-18HNB PWB

Survey Program

Start MD (ft)	End MD (ft)	Tool	Model	Log Name/Comment	Wellbore
17.00	1550.00	BHI NewTrak	Custom BHI NewTrak (Standard Rotating-Axial Cor) (Rockies 0.03Gr model)		PRONGHORN F-J-18HNB PWB
1550.00	10901.58	BHI AutoTrak Cone	Custom BHI AutoTrak Cone (Axial Cor, Short spacing) (Rockies 0.03Gr model)		PRONGHORN F-J-18HNB PWB

Bottom Hole Location

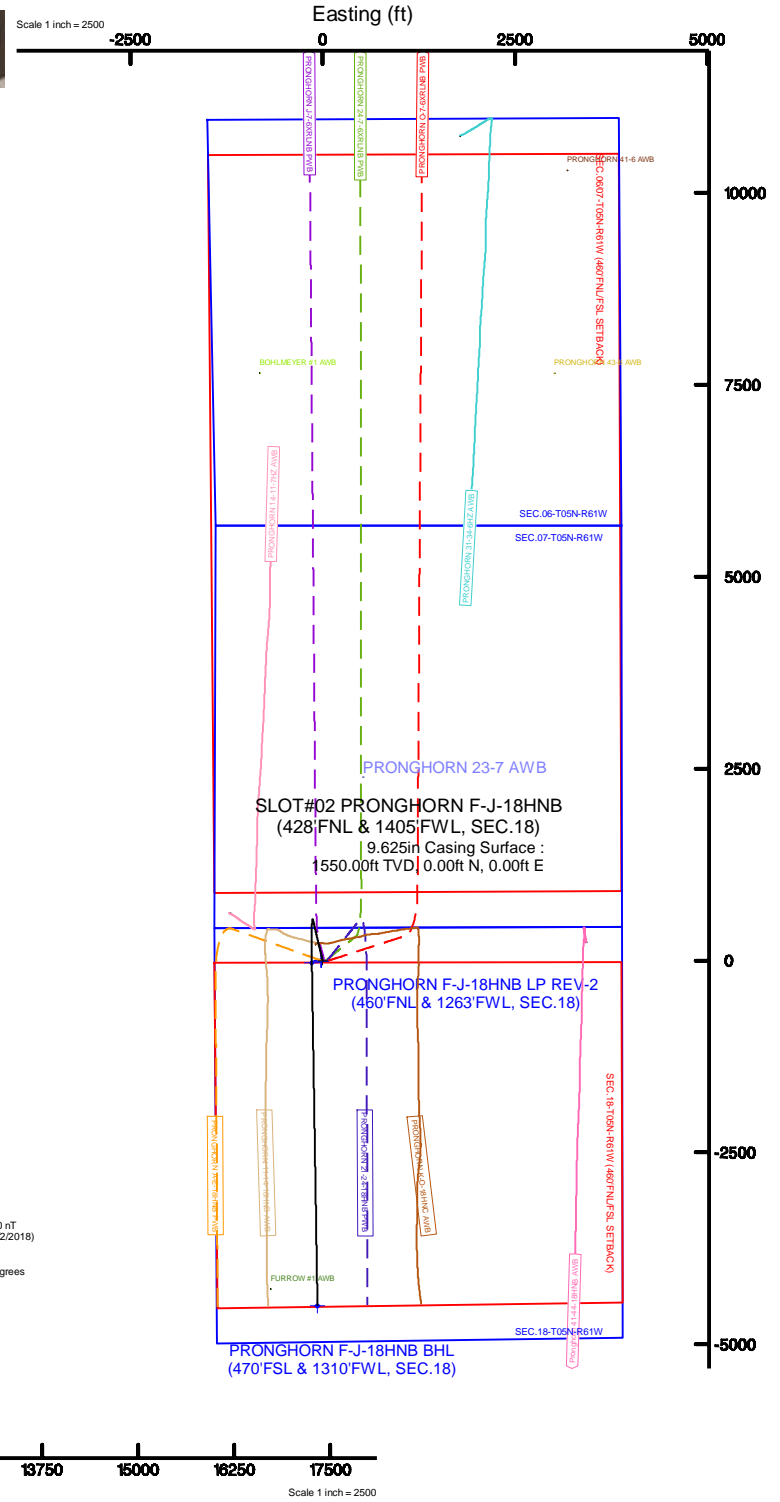
MD (ft)	Inc (°)	Az (°)	TVD (ft)	Local N (ft)	Local E (ft)	Grid East (US ft)	Grid North (US ft)	Latitude	Longitude
10901.00	90.00	179.058	6062.00	-4499.25	-66.85	3346177.60	1389157.76	40°23'41.928"N	104°15'25.524"W



Vertical Section (ft)
Azimuth 180.85° with reference 0.00 N, 0.00 E



Scale 1 inch = 2500



Scale 1 inch = 2500



BGGM (1900.0 to 2019.0) Dip: 66.93° Field: 52420 nT
Magnetic North is 8.04 degrees East of True North (at 2/2/2018)

To correct azimuth from Magnetic to True add 8.04 degrees



Planned Wellpath Report

PRONGHORN F-J-18HNB PWP (REV-A.0)

Page 1 of 8



REFERENCE WELLPATH IDENTIFICATION

Operator	BONANZA CREEK OIL COMPANY	Slot	SLOT#02 PRONGHORN F-J-18HNB (428'FNL & 1405'FWL, SEC.18)
Area	COLORADO	Well	PRONGHORN F-J-18HNB
Field	WELD COUNTY	Wellbore	PRONGHORN F-J-18HNB PWB
Facility	SEC.18-T05N-R61W		

REPORT SETUP INFORMATION

Projection System	NAD83 / Lambert Colorado SP, Northern Zone (501), US feet	Software System	WellArchitect® 5.0
North Reference	True	User	Ingmjmr
Scale	0.999961	Report Generated	2/8/2018 at 10:00:49 AM
Convergence at slot	0.81° East	Database/Source file	Denver/PRONGHORN_F-J-18HNB_PWP__REV-A.0_.xml

WELLPATH LOCATION

	Local coordinates		Grid coordinates		Geographic coordinates	
	North[ft]	East[ft]	Easting[US ft]	Northing[US ft]	Latitude	Longitude
Slot Location	0.00	-22.28	3346181.37	1393657.32	40°24'26.388"N	104°15'24.660"W
Facility Reference Pt			3346203.65	1393657.63	40°24'26.388"N	104°15'24.372"W
Field Reference Pt			3224525.77	1254425.87	40°01'44.400"N	104°41'53.556"W

WELLPATH DATUM

Calculation method	Minimum curvature	RIG (17'KB) (RKB) to Facility Vertical Datum	4582.00ft
Horizontal Reference Pt	Slot	RIG (17'KB) (RKB) to Mean Sea Level	4582.00ft
Vertical Reference Pt	RIG (17'KB) (RKB)	RIG (17'KB) (RKB) to Mud Line at Slot (SLOT#02 PRONGHORN F-J-18HNB (428'FNL & 1405'FWL, SEC.18))	4582.00ft
MD Reference Pt	RIG (17'KB) (RKB)	Section Origin	N 0.00, E 0.00 ft
Field Vertical Reference	Mean Sea Level	Section Azimuth	180.85°



Planned Wellpath Report

PRONGHORN F-J-18HNB PWP (REV-A.0)

Page 2 of 8



REFERENCE WELLPATH IDENTIFICATION			
Operator	BONANZA CREEK OIL COMPANY	Slot	SLOT#02 PRONGHORN F-J-18HNB (428'FNL & 1405'FWL, SEC.18)
Area	COLORADO	Well	PRONGHORN F-J-18HNB
Field	WELD COUNTY	Wellbore	PRONGHORN F-J-18HNB PWB
Facility	SEC.18-T05N-R61W		

WELLPATH DATA (115 stations) † = interpolated/extrapolated station										
MD [ft]	Inclination [°]	Azimuth [°]	TVD [ft]	Vert Sect [ft]	North [ft]	East [ft]	Latitude	Longitude	DLS [°/100ft]	Comments
0.00†	0.000	346.641	0.00	0.00	0.00	0.00	40°24'26.388"N	104°15'24.660"W	0.00	
17.00	0.000	346.641	17.00	0.00	0.00	0.00	40°24'26.388"N	104°15'24.660"W	0.00	Tie On
117.00†	0.000	346.641	117.00	0.00	0.00	0.00	40°24'26.388"N	104°15'24.660"W	0.00	
217.00†	0.000	346.641	217.00	0.00	0.00	0.00	40°24'26.388"N	104°15'24.660"W	0.00	
317.00†	0.000	346.641	317.00	0.00	0.00	0.00	40°24'26.388"N	104°15'24.660"W	0.00	
417.00†	0.000	346.641	417.00	0.00	0.00	0.00	40°24'26.388"N	104°15'24.660"W	0.00	
517.00†	0.000	346.641	517.00	0.00	0.00	0.00	40°24'26.388"N	104°15'24.660"W	0.00	
617.00†	0.000	346.641	617.00	0.00	0.00	0.00	40°24'26.388"N	104°15'24.660"W	0.00	
717.00†	0.000	346.641	717.00	0.00	0.00	0.00	40°24'26.388"N	104°15'24.660"W	0.00	
817.00†	0.000	346.641	817.00	0.00	0.00	0.00	40°24'26.388"N	104°15'24.660"W	0.00	
917.00†	0.000	346.641	917.00	0.00	0.00	0.00	40°24'26.388"N	104°15'24.660"W	0.00	
1017.00†	0.000	346.641	1017.00	0.00	0.00	0.00	40°24'26.388"N	104°15'24.660"W	0.00	
1117.00†	0.000	346.641	1117.00	0.00	0.00	0.00	40°24'26.388"N	104°15'24.660"W	0.00	
1217.00†	0.000	346.641	1217.00	0.00	0.00	0.00	40°24'26.388"N	104°15'24.660"W	0.00	
1317.00†	0.000	346.641	1317.00	0.00	0.00	0.00	40°24'26.388"N	104°15'24.660"W	0.00	
1417.00†	0.000	346.641	1417.00	0.00	0.00	0.00	40°24'26.388"N	104°15'24.660"W	0.00	
1517.00†	0.000	346.641	1517.00	0.00	0.00	0.00	40°24'26.388"N	104°15'24.660"W	0.00	
1617.00†	0.000	346.641	1617.00	0.00	0.00	0.00	40°24'26.388"N	104°15'24.660"W	0.00	
1700.00	0.000	346.641	1700.00	0.00	0.00	0.00	40°24'26.388"N	104°15'24.660"W	0.00	End of Tangent
1717.00†	0.340	346.641	1717.00	-0.05	0.05	-0.01	40°24'26.388"N	104°15'24.660"W	2.00	
1817.00†	2.340	346.641	1816.97	-2.32	2.32	-0.55	40°24'26.411"N	104°15'24.667"W	2.00	
1917.00†	4.340	346.641	1916.79	-7.96	7.99	-1.90	40°24'26.467"N	104°15'24.685"W	2.00	
2017.00†	6.340	346.641	2016.35	-16.98	17.05	-4.05	40°24'26.556"N	104°15'24.712"W	2.00	
2117.00†	8.340	346.641	2115.53	-29.37	29.48	-7.00	40°24'26.679"N	104°15'24.750"W	2.00	
2149.83	8.997	346.641	2147.98	-34.16	34.29	-8.14	40°24'26.727"N	104°15'24.765"W	2.00	End of Build (XS)
2217.00†	8.997	346.641	2214.33	-44.35	44.51	-10.57	40°24'26.828"N	104°15'24.797"W	0.00	
2317.00†	8.997	346.641	2313.10	-59.51	59.72	-14.18	40°24'26.978"N	104°15'24.843"W	0.00	
2417.00†	8.997	346.641	2411.87	-74.67	74.94	-17.80	40°24'27.129"N	104°15'24.890"W	0.00	
2517.00†	8.997	346.641	2510.64	-89.82	90.15	-21.41	40°24'27.279"N	104°15'24.937"W	0.00	
2617.00†	8.997	346.641	2609.41	-104.98	105.37	-25.02	40°24'27.429"N	104°15'24.983"W	0.00	



Planned Wellpath Report

PRONGHORN F-J-18HNB PWP (REV-A.0)

Page 3 of 8



REFERENCE WELLPATH IDENTIFICATION

Operator	BONANZA CREEK OIL COMPANY	Slot	SLOT#02 PRONGHORN F-J-18HNB (428'FNL & 1405'FWL, SEC.18)
Area	COLORADO	Well	PRONGHORN F-J-18HNB
Field	WELD COUNTY	Wellbore	PRONGHORN F-J-18HNB PWB
Facility	SEC.18-T05N-R61W		

WELLPATH DATA (115 stations) † = interpolated/extrapolated station

MD [ft]	Inclination [°]	Azimuth [°]	TVD [ft]	Vert Sect [ft]	North [ft]	East [ft]	Latitude	Longitude	DLS [°/100ft]	Comments
2717.00†	8.997	346.641	2708.18	-120.14	120.58	-28.64	40°24'27.580"N	104°15'25.030"W	0.00	
2817.00†	8.997	346.641	2806.95	-135.30	135.80	-32.25	40°24'27.730"N	104°15'25.077"W	0.00	
2917.00†	8.997	346.641	2905.72	-150.46	151.01	-35.86	40°24'27.880"N	104°15'25.124"W	0.00	
3017.00†	8.997	346.641	3004.49	-165.62	166.22	-39.47	40°24'28.031"N	104°15'25.170"W	0.00	
3117.00†	8.997	346.641	3103.26	-180.78	181.44	-43.09	40°24'28.181"N	104°15'25.217"W	0.00	
3217.00†	8.997	346.641	3202.03	-195.94	196.65	-46.70	40°24'28.331"N	104°15'25.264"W	0.00	
3317.00†	8.997	346.641	3300.80	-211.10	211.87	-50.31	40°24'28.482"N	104°15'25.310"W	0.00	
3417.00†	8.997	346.641	3399.56	-226.26	227.08	-53.93	40°24'28.632"N	104°15'25.357"W	0.00	
3517.00†	8.997	346.641	3498.33	-241.41	242.30	-57.54	40°24'28.782"N	104°15'25.404"W	0.00	
3617.00†	8.997	346.641	3597.10	-256.57	257.51	-61.15	40°24'28.933"N	104°15'25.451"W	0.00	
3717.00†	8.997	346.641	3695.87	-271.73	272.73	-64.77	40°24'29.083"N	104°15'25.497"W	0.00	
3817.00†	8.997	346.641	3794.64	-286.89	287.94	-68.38	40°24'29.233"N	104°15'25.544"W	0.00	
3917.00†	8.997	346.641	3893.41	-302.05	303.15	-71.99	40°24'29.384"N	104°15'25.591"W	0.00	
4017.00†	8.997	346.641	3992.18	-317.21	318.37	-75.61	40°24'29.534"N	104°15'25.637"W	0.00	
4117.00†	8.997	346.641	4090.95	-332.37	333.58	-79.22	40°24'29.684"N	104°15'25.684"W	0.00	
4217.00†	8.997	346.641	4189.72	-347.53	348.80	-82.83	40°24'29.835"N	104°15'25.731"W	0.00	
4317.00†	8.997	346.641	4288.49	-362.69	364.01	-86.45	40°24'29.985"N	104°15'25.777"W	0.00	
4417.00†	8.997	346.641	4387.26	-377.85	379.23	-90.06	40°24'30.135"N	104°15'25.824"W	0.00	
4517.00†	8.997	346.641	4486.03	-393.00	394.44	-93.67	40°24'30.286"N	104°15'25.871"W	0.00	
4617.00†	8.997	346.641	4584.80	-408.16	409.65	-97.28	40°24'30.436"N	104°15'25.918"W	0.00	
4717.00†	8.997	346.641	4683.57	-423.32	424.87	-100.90	40°24'30.586"N	104°15'25.964"W	0.00	
4817.00†	8.997	346.641	4782.34	-438.48	440.08	-104.51	40°24'30.737"N	104°15'26.011"W	0.00	
4917.00†	8.997	346.641	4881.11	-453.64	455.30	-108.12	40°24'30.887"N	104°15'26.058"W	0.00	
5017.00†	8.997	346.641	4979.88	-468.80	470.51	-111.74	40°24'31.037"N	104°15'26.104"W	0.00	
5117.00†	8.997	346.641	5078.65	-483.96	485.73	-115.35	40°24'31.188"N	104°15'26.151"W	0.00	
5217.00†	8.997	346.641	5177.42	-499.12	500.94	-118.96	40°24'31.338"N	104°15'26.198"W	0.00	
5317.00†	8.997	346.641	5276.19	-514.28	516.16	-122.58	40°24'31.488"N	104°15'26.245"W	0.00	
5417.00†	8.997	346.641	5374.96	-529.44	531.37	-126.19	40°24'31.639"N	104°15'26.291"W	0.00	
5444.30	8.997	346.641	5401.92	-533.57	535.52	-127.18	40°24'31.680"N	104°15'26.304"W	0.00	End of Tangent (XS)
5517.00†	2.469	306.906	5474.24	-540.01	542.00	-129.74	40°24'31.744"N	104°15'26.337"W	10.00	



Planned Wellpath Report

PRONGHORN F-J-18HNB PWP (REV-A.0)

Page 4 of 8



REFERENCE WELLPATH IDENTIFICATION			
Operator	BONANZA CREEK OIL COMPANY	Slot	SLOT#02 PRONGHORN F-J-18HNB (428'FNL & 1405'FWL, SEC.18)
Area	COLORADO	Well	PRONGHORN F-J-18HNB
Field	WELD COUNTY	Wellbore	PRONGHORN F-J-18HNB PWB
Facility	SEC.18-T05N-R61W		

WELLPATH DATA (115 stations) † = interpolated/extrapolated station										
MD [ft]	Inclination [°]	Azimuth [°]	TVD [ft]	Vert Sect [ft]	North [ft]	East [ft]	Latitude	Longitude	DLS [°/100ft]	Comments
5617.00†	8.705	191.904	5573.87	-533.84	535.88	-133.04	40°24'31.683"N	104°15'26.380"W	10.00	
5717.00†	18.585	184.869	5670.93	-510.46	512.53	-135.96	40°24'31.453"N	104°15'26.418"W	10.00	
5817.00†	28.547	182.646	5762.48	-470.58	472.69	-138.42	40°24'31.059"N	104°15'26.449"W	10.00	
5917.00†	38.527	181.508	5845.73	-415.41	417.54	-140.35	40°24'30.514"N	104°15'26.474"W	10.00	
6017.00†	48.515	180.783	5918.15	-346.64	348.78	-141.68	40°24'29.835"N	104°15'26.492"W	10.00	
6117.00†	58.506	180.253	5977.54	-266.35	268.49	-142.38	40°24'29.041"N	104°15'26.501"W	10.00	
6217.00†	68.499	179.826	6022.10	-176.97	179.11	-142.43	40°24'28.158"N	104°15'26.501"W	10.00	
6317.00†	78.492	179.455	6050.48	-81.24	83.35	-141.82	40°24'27.212"N	104°15'26.493"W	10.00	
6417.00†	88.486	179.109	6061.80	17.95	-15.87	-140.58	40°24'26.231"N	104°15'26.477"W	10.00	
6432.14	90.000	179.058	6062.00†	33.09	-31.01	-140.33	40°24'26.082"N	104°15'26.474"W	10.00	End of 3D Arc (XS)
6517.00†	90.000	179.058	6062.00	117.90	-115.85	-138.94	40°24'25.243"N	104°15'26.456"W	0.00	
6617.00†	90.000	179.058	6062.00	217.85	-215.84	-137.29	40°24'24.255"N	104°15'26.435"W	0.00	
6717.00†	90.000	179.058	6062.00	317.80	-315.82	-135.65	40°24'23.267"N	104°15'26.413"W	0.00	
6817.00†	90.000	179.058	6062.00	417.76	-415.81	-134.00	40°24'22.279"N	104°15'26.392"W	0.00	
6917.00†	90.000	179.058	6062.00	517.71	-515.80	-132.36	40°24'21.291"N	104°15'26.371"W	0.00	
7017.00†	90.000	179.058	6062.00	617.66	-615.78	-130.72	40°24'20.303"N	104°15'26.350"W	0.00	
7117.00†	90.000	179.058	6062.00	717.61	-715.77	-129.07	40°24'19.315"N	104°15'26.328"W	0.00	
7217.00†	90.000	179.058	6062.00	817.56	-815.76	-127.43	40°24'18.327"N	104°15'26.307"W	0.00	
7317.00†	90.000	179.058	6062.00	917.51	-915.74	-125.78	40°24'17.339"N	104°15'26.286"W	0.00	
7417.00†	90.000	179.058	6062.00	1017.46	-1015.73	-124.14	40°24'16.351"N	104°15'26.265"W	0.00	
7517.00†	90.000	179.058	6062.00	1117.41	-1115.72	-122.49	40°24'15.363"N	104°15'26.243"W	0.00	
7617.00†	90.000	179.058	6062.00	1217.36	-1215.70	-120.85	40°24'14.375"N	104°15'26.222"W	0.00	
7717.00†	90.000	179.058	6062.00	1317.32	-1315.69	-119.21	40°24'13.387"N	104°15'26.201"W	0.00	
7817.00†	90.000	179.058	6062.00	1417.27	-1415.68	-117.56	40°24'12.399"N	104°15'26.180"W	0.00	
7917.00†	90.000	179.058	6062.00	1517.22	-1515.66	-115.92	40°24'11.411"N	104°15'26.158"W	0.00	
8017.00†	90.000	179.058	6062.00	1617.17	-1615.65	-114.27	40°24'10.423"N	104°15'26.137"W	0.00	
8117.00†	90.000	179.058	6062.00	1717.12	-1715.64	-112.63	40°24'09.435"N	104°15'26.116"W	0.00	
8217.00†	90.000	179.058	6062.00	1817.07	-1815.62	-110.98	40°24'08.447"N	104°15'26.095"W	0.00	
8317.00†	90.000	179.058	6062.00	1917.02	-1915.61	-109.34	40°24'07.459"N	104°15'26.073"W	0.00	
8417.00†	90.000	179.058	6062.00	2016.97	-2015.59	-107.70	40°24'06.471"N	104°15'26.052"W	0.00	



Planned Wellpath Report

PRONGHORN F-J-18HNB PWP (REV-A.0)

Page 5 of 8



REFERENCE WELLPATH IDENTIFICATION			
Operator	BONANZA CREEK OIL COMPANY	Slot	SLOT#02 PRONGHORN F-J-18HNB (428'FNL & 1405'FWL, SEC.18)
Area	COLORADO	Well	PRONGHORN F-J-18HNB
Field	WELD COUNTY	Wellbore	PRONGHORN F-J-18HNB PWB
Facility	SEC.18-T05N-R61W		

WELLPATH DATA (115 stations) † = interpolated/extrapolated station										
MD [ft]	Inclination [°]	Azimuth [°]	TVD [ft]	Vert Sect [ft]	North [ft]	East [ft]	Latitude	Longitude	DLS [°/100ft]	Comments
8517.00†	90.000	179.058	6062.00	2116.92	-2115.58	-106.05	40°24'05.483"N	104°15'26.031"W	0.00	
8617.00†	90.000	179.058	6062.00	2216.87	-2215.57	-104.41	40°24'04.495"N	104°15'26.010"W	0.00	
8717.00†	90.000	179.058	6062.00	2316.83	-2315.55	-102.76	40°24'03.507"N	104°15'25.988"W	0.00	
8817.00†	90.000	179.058	6062.00	2416.78	-2415.54	-101.12	40°24'02.519"N	104°15'25.967"W	0.00	
8917.00†	90.000	179.058	6062.00	2516.73	-2515.53	-99.47	40°24'01.530"N	104°15'25.946"W	0.00	
9017.00†	90.000	179.058	6062.00	2616.68	-2615.51	-97.83	40°24'00.542"N	104°15'25.924"W	0.00	
9117.00†	90.000	179.058	6062.00	2716.63	-2715.50	-96.19	40°23'59.554"N	104°15'25.903"W	0.00	
9217.00†	90.000	179.058	6062.00	2816.58	-2815.49	-94.54	40°23'58.566"N	104°15'25.882"W	0.00	
9317.00†	90.000	179.058	6062.00	2916.53	-2915.47	-92.90	40°23'57.578"N	104°15'25.861"W	0.00	
9417.00†	90.000	179.058	6062.00	3016.48	-3015.46	-91.25	40°23'56.590"N	104°15'25.839"W	0.00	
9517.00†	90.000	179.058	6062.00	3116.43	-3115.45	-89.61	40°23'55.602"N	104°15'25.818"W	0.00	
9617.00†	90.000	179.058	6062.00	3216.38	-3215.43	-87.96	40°23'54.614"N	104°15'25.797"W	0.00	
9717.00†	90.000	179.058	6062.00	3316.34	-3315.42	-86.32	40°23'53.626"N	104°15'25.776"W	0.00	
9817.00†	90.000	179.058	6062.00	3416.29	-3415.41	-84.67	40°23'52.638"N	104°15'25.754"W	0.00	
9917.00†	90.000	179.058	6062.00	3516.24	-3515.39	-83.03	40°23'51.650"N	104°15'25.733"W	0.00	
10017.00†	90.000	179.058	6062.00	3616.19	-3615.38	-81.39	40°23'50.662"N	104°15'25.712"W	0.00	
10117.00†	90.000	179.058	6062.00	3716.14	-3715.36	-79.74	40°23'49.674"N	104°15'25.691"W	0.00	
10217.00†	90.000	179.058	6062.00	3816.09	-3815.35	-78.10	40°23'48.686"N	104°15'25.669"W	0.00	
10317.00†	90.000	179.058	6062.00	3916.04	-3915.34	-76.45	40°23'47.698"N	104°15'25.648"W	0.00	
10417.00†	90.000	179.058	6062.00	4015.99	-4015.32	-74.81	40°23'46.710"N	104°15'25.627"W	0.00	
10517.00†	90.000	179.058	6062.00	4115.94	-4115.31	-73.16	40°23'45.722"N	104°15'25.606"W	0.00	
10617.00†	90.000	179.058	6062.00	4215.89	-4215.30	-71.52	40°23'44.734"N	104°15'25.584"W	0.00	
10717.00†	90.000	179.058	6062.00	4315.85	-4315.28	-69.88	40°23'43.746"N	104°15'25.563"W	0.00	
10817.00†	90.000	179.058	6062.00	4415.80	-4415.27	-68.23	40°23'42.758"N	104°15'25.542"W	0.00	
10901.00	90.000	179.058	6062.00†	4499.75	-4499.25	-66.85	40°23'41.928"N	104°15'25.524"W	0.00	End of Tangent (XS)



Planned Wellpath Report

PRONGHORN F-J-18HNB PWP (REV-A.0)

Page 6 of 8



REFERENCE WELLPATH IDENTIFICATION			
Operator	BONANZA CREEK OIL COMPANY	Slot	SLOT#02 PRONGHORN F-J-18HNB (428'FNL & 1405'FWL, SEC.18)
Area	COLORADO	Well	PRONGHORN F-J-18HNB
Field	WELD COUNTY	Wellbore	PRONGHORN F-J-18HNB PWB
Facility	SEC.18-T05N-R61W		

HOLE & CASING SECTIONS - Ref Wellbore: PRONGHORN F-J-18HNB PWB Ref Wellpath: PRONGHORN F-J-18HNB PWP (REV-A.0)									
String/Diameter	Start MD [ft]	End MD [ft]	Interval [ft]	Start TVD [ft]	End TVD [ft]	Start N/S [ft]	Start E/W [ft]	End N/S [ft]	End E/W [ft]
9.625in Casing Surface	17.00	1550.00	1533.00	17.00	1550.00	0.00	0.00	0.00	0.00
8.5in Open Hole	1550.00	10901.00	9351.00	1550.00	N/A	0.00	0.00	N/A	N/A

TARGETS									
Name	MD [ft]	TVD [ft]	North [ft]	East [ft]	Grid East [US ft]	Grid North [US ft]	Latitude	Longitude	Shape
SEC.06-T05N-R61W		0.00	0.00	-19.49	3346161.88	1393657.05	40°24'26.388"N	104°15'24.912"W	polygon
SEC.07-T05N-R61W		0.00	0.00	-19.49	3346161.88	1393657.05	40°24'26.388"N	104°15'24.912"W	polygon
SEC.18-T05N-R61W		0.00	0.00	-19.49	3346161.88	1393657.05	40°24'26.388"N	104°15'24.912"W	polygon
2) PRONGHORN F-J-18HNB BHL (470'FSL & 1310'FWL, SEC.18)	10901.00	6062.00	-4499.25	-66.85	3346177.60	1389157.76	40°23'41.928"N	104°15'25.524"W	point
PRONGHORN F-J-18HNB LP (531'FNL & 1317'FWL, SEC.18)		6062.00	-102.01	-86.33	3346096.48	1393554.12	40°24'25.380"N	104°15'25.776"W	point
PRONGHORN F-J-18HNB LP REV-1 (460'FNL & 1317'FWL, SEC.18)		6062.00	-31.01	-86.33	3346095.49	1393625.11	40°24'26.082"N	104°15'25.776"W	point
1) PRONGHORN F-J-18HNB LP REV-2 (460'FNL & 1263'FWL, SEC.18)	6432.14	6062.00	-31.01	-140.33	3346041.49	1393624.35	40°24'26.082"N	104°15'26.474"W	point
SEC.06/07-T05N-R61W (460'FNL/FSL SETBACK)		6200.00	0.00	-19.49	3346161.88	1393657.05	40°24'26.388"N	104°15'24.912"W	polygon
SEC.18-T05N-R61W (460'FNL/FSL SETBACK)		6200.00	0.00	-19.49	3346161.88	1393657.05	40°24'26.388"N	104°15'24.912"W	polygon



Planned Wellpath Report

PRONGHORN F-J-18HNB PWP (REV-A.0)

Page 7 of 8



REFERENCE WELLPATH IDENTIFICATION			
Operator	BONANZA CREEK OIL COMPANY	Slot	SLOT#02 PRONGHORN F-J-18HNB (428'FNL & 1405'FWL, SEC.18)
Area	COLORADO	Well	PRONGHORN F-J-18HNB
Field	WELD COUNTY	Wellbore	PRONGHORN F-J-18HNB PWB
Facility	SEC.18-T05N-R61W		

SURVEY PROGRAM - Ref Wellbore: PRONGHORN F-J-18HNB PWB Ref Wellpath: PRONGHORN F-J-18HNB PWP (REV-A.0)				
Start MD [ft]	End MD [ft]	Positional Uncertainty Model	Log Name/Comment	Wellbore
17.00	1550.00	Custom BHI NaviTrak (Standard Rotating+Axial Corr) (Rockies 0.03Gt model)		PRONGHORN F-J-18HNB PWB
1550.00	10901.58	Custom BHI AutoTrak Curve (Axial Corr, Short spacing) (Rockies 0.03Gt model)		PRONGHORN F-J-18HNB PWB



Planned Wellpath Report

PRONGHORN F-J-18HNB PWP (REV-A.0)

Page 8 of 8



REFERENCE WELLPATH IDENTIFICATION			
Operator	BONANZA CREEK OIL COMPANY	Slot	SLOT#02 PRONGHORN F-J-18HNB (428'FNL & 1405'FWL, SEC.18)
Area	COLORADO	Well	PRONGHORN F-J-18HNB
Field	WELD COUNTY	Wellbore	PRONGHORN F-J-18HNB PWB
Facility	SEC.18-T05N-R61W		

DESIGN COMMENTS				
MD [ft]	Inclination [°]	Azimuth [°]	TVD [ft]	Comment
17.00	0.000	346.641	17.00	Tie On
1700.00	0.000	346.641	1700.00	End of Tangent
2149.83	8.997	346.641	2147.98	End of Build (XS)
5444.30	8.997	346.641	5401.92	End of Tangent (XS)
6432.14	90.000	179.058	6062.00	End of 3D Arc (XS)
10901.00	90.000	179.058	6062.00	End of Tangent (XS)