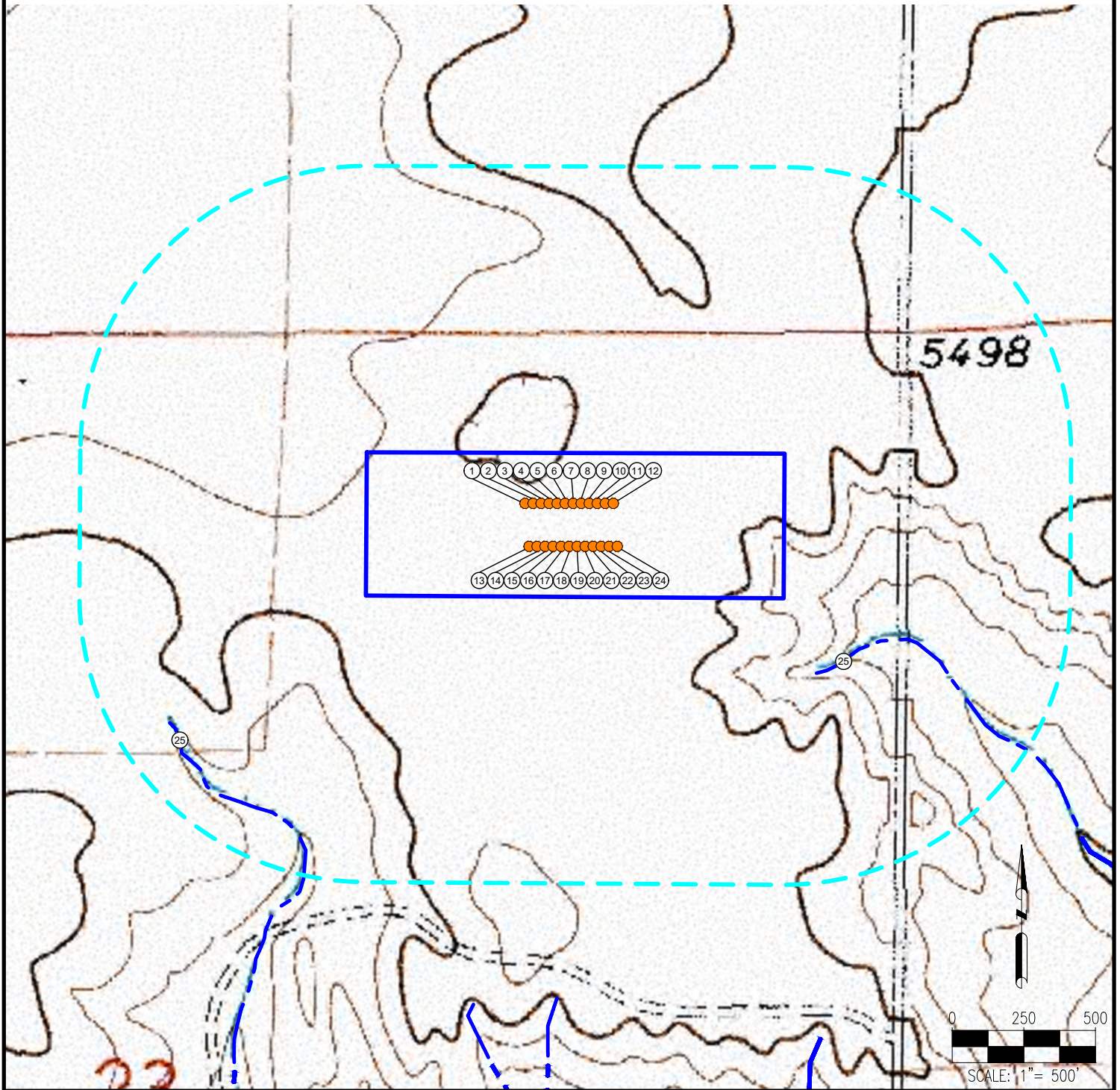


GARDNER (FED) 23-D PAD HYDROLOGY MAP



MEASUREMENTS ARE MADE FROM THE NEAREST EDGE OF THE DISTURBANCE AREA.

- | | | | | |
|----------------------------|------------------------------|-----------------------------|------------------------------|--|
| 1. GARDNER (FED) 23S-20-1N | 7. GARDNER (FED) 23S-20-7N | 13. GARDNER (FED) 14N-20-1N | 19. GARDNER (FED) 14N-20-10N | 25. INTERMITTENT STREAMS ARE
±816' SW, ±285' SE |
| 2. GARDNER (FED) 23S-20-2C | 8. GARDNER (FED) 23S-20-8C | 14. GARDNER (FED) 14N-20-1N | 20. GARDNER (FED) 14N-20-12N | |
| 3. GARDNER (FED) 23S-20-3N | 9. GARDNER (FED) 23S-20-9N | 15. GARDNER (FED) 14N-20-3N | 21. GARDNER (FED) 14N-20-2C | |
| 4. GARDNER (FED) 23S-20-4N | 10. GARDNER (FED) 23S-20-10N | 16. GARDNER (FED) 14N-20-4N | 22. GARDNER (FED) 14N-20-5C | |
| 5. GARDNER (FED) 23S-20-5C | 11. GARDNER (FED) 23S-20-11C | 17. GARDNER (FED) 14N-20-6N | 23. GARDNER (FED) 14N-20-8C | |
| 6. GARDNER (FED) 23S-20-6N | 12. GARDNER (FED) 23S-20-12N | 18. GARDNER (FED) 14N-20-7N | 24. GARDNER (FED) 14N-20-11C | |

LEGEND:

- = PROPOSED WELL
- — — = INTERMITTENT STREAM
- = DISTURBANCE AREA
- = 1000' RADIUS

DISCLAIMER:
THIS PLOT DOES NOT REPRESENT A MONUMENTED LAND SURVEY AND SHOULD NOT BE RELIED UPON TO DETERMINE BOUNDARY LINES. PROPERTY OWNERSHIP OR OTHER PROPERTY INTERESTS, PARCEL LINES, IF DEPICTED HAVE NOT BEEN FIELD VERIFIED AND MAY BE BASED UPON PUBLICLY AVAILABLE DATA THAT ALSO HAS NOT BEEN INDEPENDENTLY VERIFIED.

DATA SOURCE:
TOPO MAP: USGS
NHD: USGS

PUBLICLY AVAILABLE DATA SOURCES HAVE NOT BEEN INDEPENDENTLY VERIFIED BY ASCENT.



7535 Hilltop Circle
Denver, CO 80221
(303) 928-7128
www.ascentgeomatics.com

FIELD DATE:
11-20-17

DRAWING DATE:
01-04-18

BY:
HED

CHECKED:
CLP

SITE NAME:
GARDNER (FED) 23-D PAD

SURFACE LOCATION:
**NE 1/4 NE 1/4 SEC. 23, T10N, R60W, 6TH P.M.
WELD COUNTY, COLORADO**

PREPARED FOR:

