

BAYSWATER E & P, LLC

Location	Weld County, CO	Slot	KTC Farms C-35-36HN
Field	WATTENBERG	Well	W KTC Farms C-35-36HN
Installation	KTC Farms Pad	Wellbore	W KTC Farms C-35-36HN (PWB)

N
GRID

East (Feet) ->

-3200 -1600 0 1600 3200 4800 6400 8000 9600 11200
Scale 1 cm = 800 ft

Surface 0.00 N 0.00 E

KTC Farms C-35-36HN - BH

KTC Farms C-35-36HN - EP

1600
0
-1600
Scale 1 cm = 800 ft
< North (Feet) | South (Feet) >

Nov-21-2017

EMM-2015 [2000.0-2020.0] Dip: 66.99 deg Field: 52425.0 nT

Lat: N40 32 17.1492 Long: W104 45 9.2160 Elev: 4861.00 ft

Magnetic North is 8.14 deg East of True North

GRID North is 0.48 deg East of True North

To correct azimuth from True to GRID subtract 0.48 deg

To correct azimuth from Magnetic to GRID add 7.66 deg

Created by admin

Date plotted 22-Nov-2017

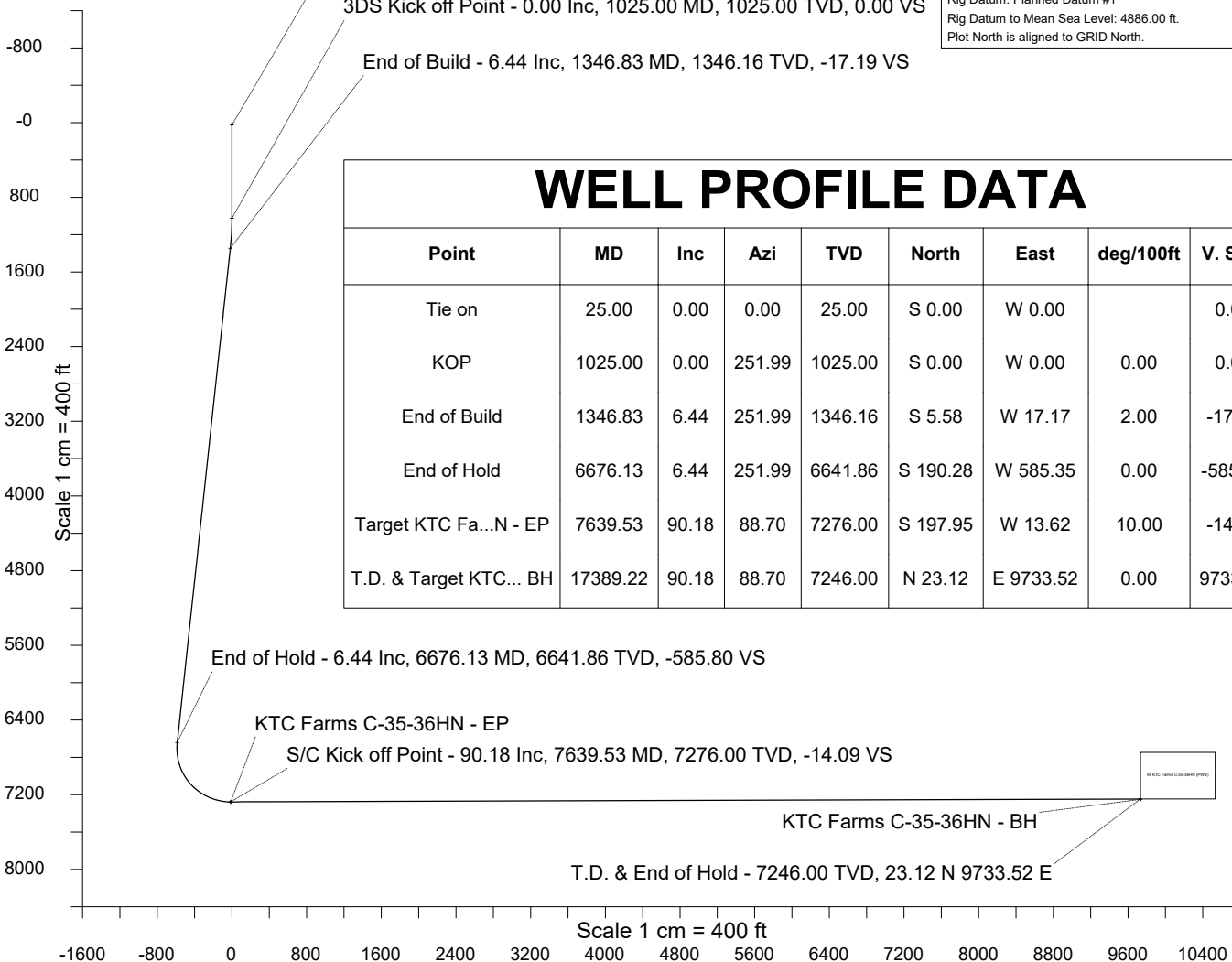
Plot reference is W KTC Farms C-35-36HN (PWB).
Ref wellpath is W KTC Farms C-35-36HN (PWP#1).
Coordinates are in Feet reference KTC Farms C-35-36HN.
True Vertical Depths are reference Rig Datum.
Measured Depths are reference Rig Datum.
Rig Datum: Planned Datum #1
Rig Datum to Mean Sea Level: 4886.00 ft.
Plot North is aligned to GRID North.

Tie on - 0.00 Inc, 25.00 MD, 25.00 TVD, 0.00 VS

3DS Kick off Point - 0.00 Inc, 1025.00 MD, 1025.00 TVD, 0.00 VS

End of Build - 6.44 Inc, 1346.83 MD, 1346.16 TVD, -17.19 VS

<- True Vertical Depth (Feet)



WELL PROFILE DATA

Point	MD	Inc	Azi	TVD	North	East	deg/100ft	V. Sect
Tie on	25.00	0.00	0.00	25.00	S 0.00	W 0.00		0.00
KOP	1025.00	0.00	251.99	1025.00	S 0.00	W 0.00	0.00	0.00
End of Build	1346.83	6.44	251.99	1346.16	S 5.58	W 17.17	2.00	-17.19
End of Hold	6676.13	6.44	251.99	6641.86	S 190.28	W 585.35	0.00	-585.80
Target KTC Fa...N - EP	7639.53	90.18	88.70	7276.00	S 197.95	W 13.62	10.00	-14.09
T.D. & Target KTC... BH	17389.22	90.18	88.70	7246.00	N 23.12	E 9733.52	0.00	9733.55

Azimuth 89.86 with reference 0.00 N, 0.00 E from KTC Farms C-35-36HN



SYSDRILL
Well Design Combined Report
Wellbore: W KTC Farms C-35-36HN (PWB)



Wellhead Details							
Name	Latitude	Longitude	Northing	Easting	North	East	Slot Elevation Above Ground
KTC Farms C-35-36HN	40.53797300	-104.75255800	1439699.8772	3207744.2020	45.17S	0.94E	0.00

Declination		
Date	Source	Time
Nov-21-2017	EMM-2015 [2000.0-2020.0]	10:51

Installation Details						
Name	Installation Position (Latitude)	Installation Position (Longitude)	Northing	Easting	Coord System Name	North Alignment
KTC Farms Pad	40.53809700	-104.75256000	1439745.0452	3207743.2653	CO83-NF on NORTH AMERICAN DATUM 1983 datum	Grid

Summary Wellpath									
MD[ft]	Inc[deg]	Azi[deg]	TVD[ft]	North[ft]	East[ft]	Dogleg [deg/100ft]	Vertical Section[ft]	Northing	Easting
25.00	0.00	0.000	25.00	0.00N	0.00E		0.00	1439699.88	3207744.20
1025.00	0.00	251.990	1025.00	0.00N	0.00E	==>	0.00	1439699.88	3207744.20
1346.83	6.44	251.990	1346.16	5.58S	17.17W	2.00	-17.19	1439694.29	3207727.03
6676.13	6.44	251.990	6641.86	190.28S	585.35W	==>	-585.80	1439509.61	3207158.87
7639.53	90.18	88.700	7276.00	197.95S	13.62W	10.00	-14.09	1439501.94	3207730.58
17389.22	90.18	88.700	7246.00	23.12N	9733.52E	==>	9733.55	1439723.00	3217477.40

Interpolated Wellpath								
MD[ft]	Inc[deg]	Azi[deg]	TVD[ft]	North[ft]	East[ft]	Dogleg [deg/100ft]	Vertical Section[ft]	All Station Comments
0.00	0.00	0.000	0.00	0.00N	0.00E		0.00	Rig Datum
25.00	0.00	0.000	25.00	0.00N	0.00E	==>	0.00	Slot Datum
100.00	0.00	0.000	100.00	0.00N	0.00E	==>	0.00	
200.00	0.00	0.000	200.00	0.00N	0.00E	==>	0.00	
300.00	0.00	0.000	300.00	0.00N	0.00E	==>	0.00	
400.00	0.00	0.000	400.00	0.00N	0.00E	==>	0.00	
500.00	0.00	0.000	500.00	0.00N	0.00E	==>	0.00	
600.00	0.00	0.000	600.00	0.00N	0.00E	==>	0.00	
700.00	0.00	0.000	700.00	0.00N	0.00E	==>	0.00	
800.00	0.00	0.000	800.00	0.00N	0.00E	==>	0.00	
900.00	0.00	0.000	900.00	0.00N	0.00E	==>	0.00	
1000.00	0.00	0.000	1000.00	0.00N	0.00E	==>	0.00	
1100.00	1.50	251.990	1099.99	0.30S	0.93W	2.00	-0.93	
1200.00	3.50	251.990	1199.89	1.65S	5.08W	2.00	-5.09	
1300.00	5.50	251.990	1299.58	4.08S	12.54W	2.00	-12.55	
1400.00	6.44	251.990	1398.99	7.43S	22.84W	==>	-22.86	
1500.00	6.44	251.990	1498.36	10.89S	33.50W	==>	-33.53	
1600.00	6.44	251.990	1597.73	14.36S	44.16W	==>	-44.20	
1700.00	6.44	251.990	1697.10	17.82S	54.83W	==>	-54.87	
1800.00	6.44	251.990	1796.47	21.29S	65.49W	==>	-65.54	
1900.00	6.44	251.990	1895.84	24.75S	76.15W	==>	-76.21	
2000.00	6.44	251.990	1995.21	28.22S	86.81W	==>	-86.88	
2100.00	6.44	251.990	2094.58	31.68S	97.47W	==>	-97.55	
2200.00	6.44	251.990	2193.95	35.15S	108.13W	==>	-108.22	
2300.00	6.44	251.990	2293.32	38.62S	118.79W	==>	-118.89	
2400.00	6.44	251.990	2392.68	42.08S	129.46W	==>	-129.56	
2500.00	6.44	251.990	2492.05	45.55S	140.12W	==>	-140.22	
2600.00	6.44	251.990	2591.42	49.01S	150.78W	==>	-150.89	
2700.00	6.44	251.990	2690.79	52.48S	161.44W	==>	-161.56	
2800.00	6.44	251.990	2790.16	55.94S	172.10W	==>	-172.23	
2900.00	6.44	251.990	2889.53	59.41S	182.76W	==>	-182.90	
3000.00	6.44	251.990	2988.90	62.88S	193.42W	==>	-193.57	

All data is in Feet unless otherwise stated
Coordinates are from Slot MD's are from Rig and TVD's are from Rig (Planned Datum #1 4886.0ft above Mean Sea Level)
Vertical Section is from 0.00N 0.00E on azimuth 89.860 degrees
Bottom hole distance is 9733.55 Feet on azimuth 89.86 degrees from Wellhead
Calculation method uses Minimum Curvature method
Prepared by Microsoft
Date Printed: 22-Nov-2017



SYSDRILL
Well Design Combined Report
Wellbore: W KTC Farms C-35-36HN (PWB)



Interpolated Wellpath								
MD[ft]	Inc[deg]	Azi[deg]	TVD[ft]	North[ft]	East[ft]	Dogleg [deg/100ft]	Vertical Section[ft]	All Station Comments
3100.00	6.44	251.990	3088.27	66.34S	204.08W	==>	-204.24	
3200.00	6.44	251.990	3187.64	69.81S	214.75W	==>	-214.91	
3300.00	6.44	251.990	3287.01	73.27S	225.41W	==>	-225.58	
3400.00	6.44	251.990	3386.38	76.74S	236.07W	==>	-236.25	
3500.00	6.44	251.990	3485.75	80.20S	246.73W	==>	-246.92	
3600.00	6.44	251.990	3585.12	83.67S	257.39W	==>	-257.59	
3700.00	6.44	251.990	3684.49	87.14S	268.05W	==>	-268.26	
3800.00	6.44	251.990	3783.86	90.60S	278.71W	==>	-278.93	
3900.00	6.44	251.990	3883.23	94.07S	289.38W	==>	-289.60	
4000.00	6.44	251.990	3982.60	97.53S	300.04W	==>	-300.27	
4100.00	6.44	251.990	4081.97	101.00S	310.70W	==>	-310.94	
4200.00	6.44	251.990	4181.34	104.46S	321.36W	==>	-321.61	
4300.00	6.44	251.990	4280.71	107.93S	332.02W	==>	-332.28	
4400.00	6.44	251.990	4380.08	111.40S	342.68W	==>	-342.95	
4500.00	6.44	251.990	4479.45	114.86S	353.34W	==>	-353.62	
4600.00	6.44	251.990	4578.82	118.33S	364.00W	==>	-364.28	
4700.00	6.44	251.990	4678.19	121.79S	374.67W	==>	-374.95	
4800.00	6.44	251.990	4777.56	125.26S	385.33W	==>	-385.62	
4900.00	6.44	251.990	4876.93	128.72S	395.99W	==>	-396.29	
5000.00	6.44	251.990	4976.30	132.19S	406.65W	==>	-406.96	
5100.00	6.44	251.990	5075.66	135.65S	417.31W	==>	-417.63	
5200.00	6.44	251.990	5175.03	139.12S	427.97W	==>	-428.30	
5300.00	6.44	251.990	5274.40	142.59S	438.63W	==>	-438.97	
5400.00	6.44	251.990	5373.77	146.05S	449.30W	==>	-449.64	
5500.00	6.44	251.990	5473.14	149.52S	459.96W	==>	-460.31	
5600.00	6.44	251.990	5572.51	152.98S	470.62W	==>	-470.98	
5700.00	6.44	251.990	5671.88	156.45S	481.28W	==>	-481.65	
5800.00	6.44	251.990	5771.25	159.91S	491.94W	==>	-492.32	
5900.00	6.44	251.990	5870.62	163.38S	502.60W	==>	-502.99	
6000.00	6.44	251.990	5969.99	166.85S	513.26W	==>	-513.66	
6100.00	6.44	251.990	6069.36	170.31S	523.92W	==>	-524.33	
6200.00	6.44	251.990	6168.73	173.78S	534.59W	==>	-535.00	
6300.00	6.44	251.990	6268.10	177.24S	545.25W	==>	-545.67	
6400.00	6.44	251.990	6367.47	180.71S	555.91W	==>	-556.34	
6500.00	6.44	251.990	6466.84	184.17S	566.57W	==>	-567.01	
6600.00	6.44	251.990	6566.21	187.64S	577.23W	==>	-577.68	
6700.00	4.21	242.540	6665.63	191.10S	587.40W	10.00	-587.85	
6800.00	6.49	105.270	6765.42	194.28S	585.19W	10.00	-585.65	
6900.00	16.33	95.070	6863.34	197.02S	565.69W	10.00	-566.15	
7000.00	26.28	92.470	6956.39	199.22S	529.47W	10.00	-529.95	
7100.00	36.26	91.240	7041.75	200.82S	477.65W	10.00	-478.13	
7200.00	46.25	90.490	7116.83	201.77S	411.80W	10.00	-412.28	
7300.00	56.24	89.950	7179.34	202.04S	333.91W	10.00	-334.39	
7400.00	66.24	89.520	7227.40	201.63S	246.36W	10.00	-246.84	
7500.00	76.23	89.160	7259.53	200.53S	151.80W	10.00	-152.28	
7600.00	86.23	88.830	7274.76	198.80S	53.11W	10.00	-53.59	
7700.00	90.18	88.700	7275.81	196.58S	46.83E	==>	46.37	
7800.00	90.18	88.700	7275.51	194.31S	146.81E	==>	146.34	
7900.00	90.18	88.700	7275.20	192.04S	246.78E	==>	246.32	
8000.00	90.18	88.700	7274.89	189.77S	346.75E	==>	346.30	
8100.00	90.18	88.700	7274.58	187.51S	446.73E	==>	446.28	
8200.00	90.18	88.700	7274.28	185.24S	546.70E	==>	546.26	
8300.00	90.18	88.700	7273.97	182.97S	646.68E	==>	646.24	
8400.00	90.18	88.700	7273.66	180.70S	746.65E	==>	746.22	
8500.00	90.18	88.700	7273.35	178.44S	846.62E	==>	846.20	
8600.00	90.18	88.700	7273.04	176.17S	946.60E	==>	946.18	
8700.00	90.18	88.700	7272.74	173.90S	1046.57E	==>	1046.16	
8800.00	90.18	88.700	7272.43	171.63S	1146.54E	==>	1146.13	
8900.00	90.18	88.700	7272.12	169.37S	1246.52E	==>	1246.11	

All data is in Feet unless otherwise stated
Coordinates are from Slot MD's are from Rig and TVD's are from Rig (Planned Datum #1 4886.0ft above Mean Sea Level)
Vertical Section is from 0.00N 0.00E on azimuth 89.860 degrees
Bottom hole distance is 9733.55 Feet on azimuth 89.86 degrees from Wellhead
Calculation method uses Minimum Curvature method
Prepared by Microsoft
Date Printed: 22-Nov-2017



SYS DRILL
Well Design Combined Report
Wellbore: W KTC Farms C-35-36HN (PWB)



Interpolated Wellpath								
MD[ft]	Inc[deg]	Azi[deg]	TVD[ft]	North[ft]	East[ft]	Dogleg [deg/100ft]	Vertical Section[ft]	All Station Comments
9000.00	90.18	88.700	7271.81	167.10S	1346.49E	==>	1346.09	
9100.00	90.18	88.700	7271.51	164.83S	1446.47E	==>	1446.07	
9200.00	90.18	88.700	7271.20	162.56S	1546.44E	==>	1546.05	
9300.00	90.18	88.700	7270.89	160.30S	1646.41E	==>	1646.03	
9400.00	90.18	88.700	7270.58	158.03S	1746.39E	==>	1746.01	
9500.00	90.18	88.700	7270.28	155.76S	1846.36E	==>	1845.99	
9600.00	90.18	88.700	7269.97	153.49S	1946.34E	==>	1945.97	
9700.00	90.18	88.700	7269.66	151.23S	2046.31E	==>	2045.94	
9800.00	90.18	88.700	7269.35	148.96S	2146.28E	==>	2145.92	
9900.00	90.18	88.700	7269.04	146.69S	2246.26E	==>	2245.90	
10000.00	90.18	88.700	7268.74	144.42S	2346.23E	==>	2345.88	
10100.00	90.18	88.700	7268.43	142.16S	2446.20E	==>	2445.86	
10200.00	90.18	88.700	7268.12	139.89S	2546.18E	==>	2545.84	
10300.00	90.18	88.700	7267.81	137.62S	2646.15E	==>	2645.82	
10400.00	90.18	88.700	7267.51	135.35S	2746.13E	==>	2745.80	
10500.00	90.18	88.700	7267.20	133.09S	2846.10E	==>	2845.78	
10600.00	90.18	88.700	7266.89	130.82S	2946.07E	==>	2945.75	
10700.00	90.18	88.700	7266.58	128.55S	3046.05E	==>	3045.73	
10800.00	90.18	88.700	7266.28	126.29S	3146.02E	==>	3145.71	
10900.00	90.18	88.700	7265.97	124.02S	3246.00E	==>	3245.69	
11000.00	90.18	88.700	7265.66	121.75S	3345.97E	==>	3345.67	
11100.00	90.18	88.700	7265.35	119.48S	3445.94E	==>	3445.65	
11200.00	90.18	88.700	7265.04	117.22S	3545.92E	==>	3545.63	
11300.00	90.18	88.700	7264.74	114.95S	3645.89E	==>	3645.61	
11400.00	90.18	88.700	7264.43	112.68S	3745.86E	==>	3745.59	
11500.00	90.18	88.700	7264.12	110.41S	3845.84E	==>	3845.56	
11600.00	90.18	88.700	7263.81	108.15S	3945.81E	==>	3945.54	
11700.00	90.18	88.700	7263.51	105.88S	4045.79E	==>	4045.52	
11800.00	90.18	88.700	7263.20	103.61S	4145.76E	==>	4145.50	
11900.00	90.18	88.700	7262.89	101.34S	4245.73E	==>	4245.48	
12000.00	90.18	88.700	7262.58	99.08S	4345.71E	==>	4345.46	
12100.00	90.18	88.700	7262.28	96.81S	4445.68E	==>	4445.44	
12200.00	90.18	88.700	7261.97	94.54S	4545.65E	==>	4545.42	
12300.00	90.18	88.700	7261.66	92.27S	4645.63E	==>	4645.40	
12400.00	90.18	88.700	7261.35	90.01S	4745.60E	==>	4745.38	
12500.00	90.18	88.700	7261.04	87.74S	4845.58E	==>	4845.35	
12600.00	90.18	88.700	7260.74	85.47S	4945.55E	==>	4945.33	
12700.00	90.18	88.700	7260.43	83.20S	5045.52E	==>	5045.31	
12800.00	90.18	88.700	7260.12	80.94S	5145.50E	==>	5145.29	
12900.00	90.18	88.700	7259.81	78.67S	5245.47E	==>	5245.27	
13000.00	90.18	88.700	7259.51	76.40S	5345.45E	==>	5345.25	
13100.00	90.18	88.700	7259.20	74.13S	5445.42E	==>	5445.23	
13200.00	90.18	88.700	7258.89	71.87S	5545.39E	==>	5545.21	
13300.00	90.18	88.700	7258.58	69.60S	5645.37E	==>	5645.19	
13400.00	90.18	88.700	7258.27	67.33S	5745.34E	==>	5745.16	
13500.00	90.18	88.700	7257.97	65.06S	5845.31E	==>	5845.14	
13600.00	90.18	88.700	7257.66	62.80S	5945.29E	==>	5945.12	
13700.00	90.18	88.700	7257.35	60.53S	6045.26E	==>	6045.10	
13800.00	90.18	88.700	7257.04	58.26S	6145.24E	==>	6145.08	
13900.00	90.18	88.700	7256.74	55.99S	6245.21E	==>	6245.06	
14000.00	90.18	88.700	7256.43	53.73S	6345.18E	==>	6345.04	
14100.00	90.18	88.700	7256.12	51.46S	6445.16E	==>	6445.02	
14200.00	90.18	88.700	7255.81	49.19S	6545.13E	==>	6545.00	
14300.00	90.18	88.700	7255.51	46.92S	6645.10E	==>	6644.97	
14400.00	90.18	88.700	7255.20	44.66S	6745.08E	==>	6744.95	
14500.00	90.18	88.700	7254.89	42.39S	6845.05E	==>	6844.93	
14600.00	90.18	88.700	7254.58	40.12S	6945.03E	==>	6944.91	
14700.00	90.18	88.700	7254.27	37.85S	7045.00E	==>	7044.89	
14800.00	90.18	88.700	7253.97	35.59S	7144.97E	==>	7144.87	

All data is in Feet unless otherwise stated
Coordinates are from Slot MD's are from Rig and TVD's are from Rig (Planned Datum #1 4886.0ft above Mean Sea Level)
Vertical Section is from 0.00N 0.00E on azimuth 89.860 degrees
Bottom hole distance is 9733.55 Feet on azimuth 89.86 degrees from Wellhead
Calculation method uses Minimum Curvature method
Prepared by Microsoft
Date Printed: 22-Nov-2017



SYS DRILL
Well Design Combined Report
Wellbore: W KTC Farms C-35-36HN (PWB)



Interpolated Wellpath								
MD[ft]	Inc[deg]	Azi[deg]	TVD[ft]	North[ft]	East[ft]	Dogleg [deg/100ft]	Vertical Section[ft]	All Station Comments
14900.00	90.18	88.700	7253.66	33.32S	7244.95E	==>	7244.85	
15000.00	90.18	88.700	7253.35	31.05S	7344.92E	==>	7344.83	
15100.00	90.18	88.700	7253.04	28.78S	7444.90E	==>	7444.81	
15200.00	90.18	88.700	7252.74	26.52S	7544.87E	==>	7544.78	
15300.00	90.18	88.700	7252.43	24.25S	7644.84E	==>	7644.76	
15400.00	90.18	88.700	7252.12	21.98S	7744.82E	==>	7744.74	
15500.00	90.18	88.700	7251.81	19.71S	7844.79E	==>	7844.72	
15600.00	90.18	88.700	7251.51	17.45S	7944.76E	==>	7944.70	
15700.00	90.18	88.700	7251.20	15.18S	8044.74E	==>	8044.68	
15800.00	90.18	88.700	7250.89	12.91S	8144.71E	==>	8144.66	
15900.00	90.18	88.700	7250.58	10.64S	8244.69E	==>	8244.64	
16000.00	90.18	88.700	7250.27	8.38S	8344.66E	==>	8344.62	
16100.00	90.18	88.700	7249.97	6.11S	8444.63E	==>	8444.60	
16200.00	90.18	88.700	7249.66	3.84S	8544.61E	==>	8544.57	
16300.00	90.18	88.700	7249.35	1.57S	8644.58E	==>	8644.55	
16400.00	90.18	88.700	7249.04	0.69N	8744.55E	==>	8744.53	
16500.00	90.18	88.700	7248.74	2.96N	8844.53E	==>	8844.51	
16600.00	90.18	88.700	7248.43	5.23N	8944.50E	==>	8944.49	
16700.00	90.18	88.700	7248.12	7.50N	9044.48E	==>	9044.47	
16800.00	90.18	88.700	7247.81	9.76N	9144.45E	==>	9144.45	
16900.00	90.18	88.700	7247.51	12.03N	9244.42E	==>	9244.43	
17000.00	90.18	88.700	7247.20	14.30N	9344.40E	==>	9344.41	
17100.00	90.18	88.700	7246.89	16.57N	9444.37E	==>	9444.38	
17200.00	90.18	88.700	7246.58	18.83N	9544.35E	==>	9544.36	
17300.00	90.18	88.700	7246.27	21.10N	9644.32E	==>	9644.34	
17389.22	90.18	88.700	7246.00	23.12N	9733.52E	==>	9733.55	

All data is in Feet unless otherwise stated
Coordinates are from Slot MD's are from Rig and TVD's are from Rig (Planned Datum #1 4886.0ft above Mean Sea Level)
Vertical Section is from 0.00N 0.00E on azimuth 89.860 degrees
Bottom hole distance is 9733.55 Feet on azimuth 89.86 degrees from Wellhead
Calculation method uses Minimum Curvature method
Prepared by Microsoft
Date Printed: 22-Nov-2017



SYSDRILL
Well Design Combined Report
Wellbore: W KTC Farms C-35-36HN (PWB)



Targets							
Name	North[ft]	East[ft]	TVD[ft]	Latitude	Longitude	Northing	Easting
KTC Farms C-35-36HN - EP	197.95S	13.62W	7276.00	40.53743000	-104.75261300	1439501.94	3207730.58
KTC Farms C-35-36HN - BH	23.12N	9733.52E	7246.00	40.53780600	-104.71754000	1439723.00	3217477.40

Survey Tool Program					
Reference	Survey Name	MD[ft]	TVD[ft]	Survey Tool	Error Model
587258	Planned	1500.00	1498.36	WdW Rate Gyro	Standard
587257	Planned	17389.22	7246.00	ISCWSA MWD	Rev 4 + SAG + FLT

Notes



SYSDRILL
Closest Approach + Clearance Factor Summary Report
Wellbore: W KTC Farms C-35-36HN (PWB)



Ellipse separations are reported ONLY if BOTH wells have uncertainty data
Only Depth and Magnetic Reference Field error terms are correlated across tie points
Scan limit is calculated on CENTRE to CENTRE distance
Summary data uses Closest Approach clearance calculation for all minima
Hole size/Casings ARE included
Hole size/Casings are NOT subtracted from Centre-Centre distance
Confidence limit of 95.00% / 2.80 SD.

Wellbore		
Name	Created	Last Revised
W KTC Farms C-35-36HN (PWB)	Nov-21-2017	Nov-22-2017

Well		
Name	Government ID	Last Revised
W KTC Farms C-35-36HN		Nov-21-2017

Slot						
Name	Latitude	Longitude	Grid Northing	Grid Easting	North	East
KTC Farms C-35-36HN	40.53797300	-104.75255800	1439699.8772	3207744.2020	45.17S	0.94E

Installation						
Name	Installation Position (Latitude)	Installation Position (Longitude)	Easting	Northing	Coord System Name	North Alignment
KTC Farms Pad	40.53809700	-104.75256000	3207743.2653	1439745.0452	CO83-NF on NORTH AMERICAN DATUM 1983 datum	Grid

Clearance Summary							
Offset WellName	Separation [ft]	MD[ft]	Diverging From[ft]	Ellipse Separation [ft]	Ellipse MD[ft]	Clearance Factor	Clearance MD[ft]
W KTC Farms BA-35-36HN	145.53	7046.00	7046.00	93.77	7046.00	2.81	7046.00
W KTC Farms B-35-36HC	161.48	7046.00	7046.00	101.23	7046.00	2.68	7046.00
W KTC Farms D-35-36HN	319.86	7046.00	7046.00	259.81	7046.00	5.27	7456.10
W KTC Farms A-35-36HN	322.67	7046.00	7046.00	263.93	7046.00	5.42	7456.10
W KTC Farms E-35-36HC	472.94	7046.00	7046.00	413.81	7046.00	8.00	7046.00
W KTC Farms EA-35-36HN	534.76	7046.00	7046.00	474.31	7046.00	8.81	7456.10
W KTC Farms F-35-36HN	633.23	7046.00	7046.00	573.52	7046.00	10.29	7456.10
W Wilson 1-35	823.77	7456.10	7456.10	753.13	7456.10	11.66	7456.10
W KTC Farms G-35-36HN	953.45	7046.00	7046.00	893.74	7046.00	15.33	7456.10
W KTC Farms H-35-36HC	1083.59	7046.00	7046.00	1024.36	7046.00	18.14	7456.10
W KTC Farms HA-35-36HN	1162.88	7046.00	7046.00	1103.18	7046.00	18.60	7456.10
W KTC Farms I-35-36HN	1251.71	7046.00	7046.00	1192.40	7046.00	20.35	7456.10
W Wilson 35-25	1441.06	7456.10	7456.10	1370.54	7456.10	20.43	7456.10
W Wilson 35-21	1496.19	7456.10	7456.10	1425.39	7456.10	21.13	7456.10
W KTC Farms	1551.22	7046.00	7046.00	1492.30	7046.00	25.12	7456.10

All data is in Feet unless otherwise stated
Coordinates are from Slot MD's are from Rig and TVD's are from Rig (Planned Datum #1 4886.0ft above Mean Sea Level)
Vertical Section is from 0.00N 0.00E on azimuth 89.860 degrees
Prepared by Microsoft
Date Printed: 22-Nov-2017



SYSDRILL
Closest Approach + Clearance Factor Summary Report
Wellbore: W KTC Farms C-35-36HN (PWB)



Clearance Summary							
Offset WellName	Separation [ft]	MD[ft]	Diverging From[ft]	Ellipse Separation [ft]	Ellipse MD[ft]	Clearance Factor	Clearance MD[ft]
J-35-36HN							
W KTC Farms K-35-36HC	1648.03	7046.00	7046.00	1589.19	7046.00	28.01	7046.00
W KTC Farms KA-35-36HN	1740.34	7046.00	7046.00	1681.61	7046.00	27.88	7456.10
W KTC Farms L-35-36HN	1796.73	7046.00	7046.00	1738.06	7046.00	30.63	7046.00
W Wilson 35-24	2180.03	7456.10	7456.10	2109.59	7456.10	30.95	7456.10
W Noffsinger 35-13	3233.41	7456.10	7456.10	3162.64	7456.10	45.69	7456.10
W Noffsinger 35-15	3786.22	7456.10	7456.10	3715.36	7456.10	53.43	7456.10
W SRC TK 11-36D	5568.90	7456.10	7456.10	5498.10	7456.10	78.66	7456.10
W SRC TK 12-36D	5776.68	7456.10	7456.10	5684.71	7456.10	62.81	7456.10
W SRC TK 36AD	6340.49	7456.10	7456.10	6262.76	7456.10	81.57	7456.10
W SRC TK 22-36D	7079.90	7456.10	7456.10	6991.89	7456.10	80.45	7456.10
W SRC TK 21-36D	7201.14	7456.10	7456.10	7130.70	7456.10	102.24	7456.10
W SRC Haythorn 31-36D	8277.61	7456.10	7456.10	8206.98	7456.10	117.20	7456.10
W SRC Haythorn 32-36D	8314.80	7456.10	7456.10	8229.59	7456.10	97.58	7456.10
W SRC Haythorn 36CD	9036.09	7456.10	7456.10	8964.23	7456.10	125.74	7456.10
W SRC Haythorn 41-36D	9786.08	7456.10	7456.10	9715.61	7456.10	138.87	7456.10
W SRC Haythorn 42-36D	9867.50	7456.10	7456.10	9788.02	7456.10	124.15	7456.10

Factor

