

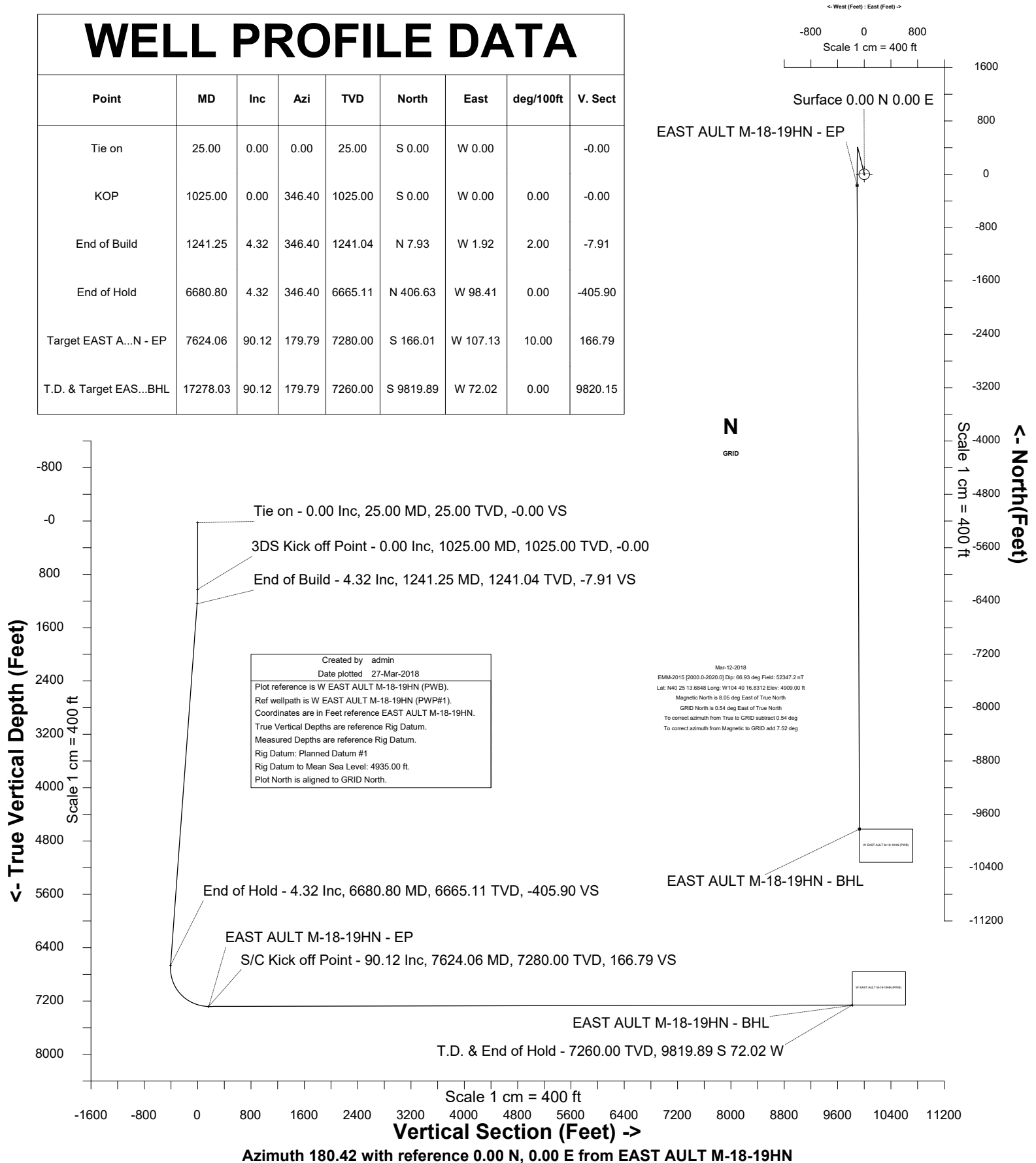
BAYSWATER E & P, LLC			
Location	Weld County, CO	Slot	EAST AULT M-18-19HN
Field	WATTENBERG	Well	W EAST AULT M-18-19HN
Installation	East Ault Pad	Wellbore	W EAST AULT M-18-19HN (PWB)

Slot EAST AULT M-18-19HN

Well W EAST AULT M-18-19HN

Wellbore W EAST AULT M-18-19HN (PWB)

WELL PROFILE DATA								
Point	MD	Inc	Azi	TVD	North	East	deg/100ft	V. Sect
Tie on	25.00	0.00	0.00	25.00	S 0.00	W 0.00		-0.00
KOP	1025.00	0.00	346.40	1025.00	S 0.00	W 0.00	0.00	-0.00
End of Build	1241.25	4.32	346.40	1241.04	N 7.93	W 1.92	2.00	-7.91
End of Hold	6680.80	4.32	346.40	6665.11	N 406.63	W 98.41	0.00	-405.90
Target EAST A...N - EP	7624.06	90.12	179.79	7280.00	S 166.01	W 107.13	10.00	166.79
T.D. & Target EAS...BHL	17278.03	90.12	179.79	7260.00	S 9819.89	W 72.02	0.00	9820.15





SYSDRILL
Well Design Combined Report
Wellbore: W EAST AULT M-18-19HN (PWB)



Wellhead Details							
Name	Latitude	Longitude	Northing	Easting	North	East	Slot Elevation Above Ground
EAST AULT M-18-19HN	40.58168000	-104.70493300	1455737.3092	3220837.9966	58644.84N	9879.20W	0.00

Declination		
Date	Source	Time
Mar-12-2018	EMM-2015 [2000.0-2020.0]	20:03

Installation Details						
Name	Installation Position (Latitude)	Installation Position (Longitude)	Northing	Easting	Coord System Name	North Alignment
East Ault Pad	40.42046800	-104.67134200	1397094.8569	3230716.7970	CO83-NF on NORTH AMERICAN DATUM 1983 datum	Grid

Summary Wellpath									
MD[ft]	Inc[deg]	Azi[deg]	TVD[ft]	North[ft]	East[ft]	Dogleg [deg/100ft]	Vertical Section[ft]	Northing	Easting
25.00	0.00	0.000	25.00	0.00N	0.00E		0.00	1455737.31	3220838.00
1025.00	0.00	346.400	1025.00	0.00N	0.00E	==>	0.00	1455737.31	3220838.00
1241.25	4.32	346.400	1241.04	7.93N	1.92W	2.00	-7.91	1455745.24	3220836.08
6680.80	4.32	346.400	6665.11	406.63N	98.41W	==>	-405.90	1456143.93	3220739.59
7624.06	90.12	179.790	7280.00	166.01S	107.13W	10.00	166.79	1455571.31	3220730.87
17278.03	90.12	179.790	7260.00	9819.89S	72.02W	==>	9820.15	1445917.70	3220765.98

Interpolated Wellpath								
MD[ft]	Inc[deg]	Azi[deg]	TVD[ft]	North[ft]	East[ft]	Dogleg [deg/100ft]	Vertical Section[ft]	All Station Comments
0.00	0.00	0.000	0.00	0.00N	0.00E		0.00	Rig Datum
25.00	0.00	0.000	25.00	0.00N	0.00E	==>	0.00	Slot Datum
100.00	0.00	0.000	100.00	0.00N	0.00E	==>	0.00	
200.00	0.00	0.000	200.00	0.00N	0.00E	==>	0.00	
300.00	0.00	0.000	300.00	0.00N	0.00E	==>	0.00	
400.00	0.00	0.000	400.00	0.00N	0.00E	==>	0.00	
500.00	0.00	0.000	500.00	0.00N	0.00E	==>	0.00	
600.00	0.00	0.000	600.00	0.00N	0.00E	==>	0.00	
700.00	0.00	0.000	700.00	0.00N	0.00E	==>	0.00	
800.00	0.00	0.000	800.00	0.00N	0.00E	==>	0.00	
900.00	0.00	0.000	900.00	0.00N	0.00E	==>	0.00	
1000.00	0.00	0.000	1000.00	0.00N	0.00E	==>	0.00	
1100.00	1.50	346.400	1099.99	0.95N	0.23W	2.00	-0.95	
1200.00	3.50	346.400	1199.89	5.19N	1.26W	2.00	-5.18	
1300.00	4.32	346.400	1299.63	12.24N	2.96W	==>	-12.21	
1400.00	4.32	346.400	1399.34	19.56N	4.74W	==>	-19.53	
1500.00	4.32	346.400	1499.06	26.89N	6.51W	==>	-26.85	
1600.00	4.32	346.400	1598.77	34.22N	8.28W	==>	-34.16	
1700.00	4.32	346.400	1698.49	41.55N	10.06W	==>	-41.48	
1800.00	4.32	346.400	1798.20	48.88N	11.83W	==>	-48.80	
1900.00	4.32	346.400	1897.92	56.21N	13.60W	==>	-56.11	
2000.00	4.32	346.400	1997.63	63.54N	15.38W	==>	-63.43	
2100.00	4.32	346.400	2097.35	70.87N	17.15W	==>	-70.75	
2200.00	4.32	346.400	2197.06	78.20N	18.93W	==>	-78.06	
2300.00	4.32	346.400	2296.78	85.53N	20.70W	==>	-85.38	
2400.00	4.32	346.400	2396.50	92.86N	22.47W	==>	-92.69	
2500.00	4.32	346.400	2496.21	100.19N	24.25W	==>	-100.01	
2600.00	4.32	346.400	2595.93	107.52N	26.02W	==>	-107.33	
2700.00	4.32	346.400	2695.64	114.85N	27.80W	==>	-114.64	
2800.00	4.32	346.400	2795.36	122.18N	29.57W	==>	-121.96	
2900.00	4.32	346.400	2895.07	129.51N	31.34W	==>	-129.28	
3000.00	4.32	346.400	2994.79	136.84N	33.12W	==>	-136.59	

All data is in Feet unless otherwise stated
Coordinates are from Slot MD's are from Rig and TVD's are from Rig (Planned Datum #1 4935.0ft above Mean Sea Level)
Vertical Section is from 0.00N 0.00E on azimuth 180.420 degrees
Bottom hole distance is 9820.15 Feet on azimuth 180.42 degrees from Wellhead
Calculation method uses Minimum Curvature method
Prepared by Microsoft
Date Printed: 27-Mar-2018



SYS DRILL
Well Design Combined Report
Wellbore: W EAST AULT M-18-19HN (PWB)



Interpolated Wellpath								
MD[ft]	Inc[deg]	Azi[deg]	TVD[ft]	North[ft]	East[ft]	Dogleg [deg/100ft]	Vertical Section[ft]	All Station Comments
3100.00	4.32	346.400	3094.50	144.17N	34.89W	==>	-143.91	
3200.00	4.32	346.400	3194.22	151.50N	36.67W	==>	-151.23	
3300.00	4.32	346.400	3293.93	158.83N	38.44W	==>	-158.54	
3400.00	4.32	346.400	3393.65	166.16N	40.21W	==>	-165.86	
3500.00	4.32	346.400	3493.36	173.49N	41.99W	==>	-173.18	
3600.00	4.32	346.400	3593.08	180.82N	43.76W	==>	-180.49	
3700.00	4.32	346.400	3692.79	188.15N	45.53W	==>	-187.81	
3800.00	4.32	346.400	3792.51	195.48N	47.31W	==>	-195.13	
3900.00	4.32	346.400	3892.22	202.81N	49.08W	==>	-202.44	
4000.00	4.32	346.400	3991.94	210.14N	50.86W	==>	-209.76	
4100.00	4.32	346.400	4091.65	217.47N	52.63W	==>	-217.07	
4200.00	4.32	346.400	4191.37	224.80N	54.40W	==>	-224.39	
4300.00	4.32	346.400	4291.08	232.13N	56.18W	==>	-231.71	
4400.00	4.32	346.400	4390.80	239.46N	57.95W	==>	-239.02	
4500.00	4.32	346.400	4490.52	246.79N	59.73W	==>	-246.34	
4600.00	4.32	346.400	4590.23	254.11N	61.50W	==>	-253.66	
4700.00	4.32	346.400	4689.95	261.44N	63.27W	==>	-260.97	
4800.00	4.32	346.400	4789.66	268.77N	65.05W	==>	-268.29	
4900.00	4.32	346.400	4889.38	276.10N	66.82W	==>	-275.61	
5000.00	4.32	346.400	4989.09	283.43N	68.60W	==>	-282.92	
5100.00	4.32	346.400	5088.81	290.76N	70.37W	==>	-290.24	
5200.00	4.32	346.400	5188.52	298.09N	72.14W	==>	-297.56	
5300.00	4.32	346.400	5288.24	305.42N	73.92W	==>	-304.87	
5400.00	4.32	346.400	5387.95	312.75N	75.69W	==>	-312.19	
5500.00	4.32	346.400	5487.67	320.08N	77.46W	==>	-319.51	
5600.00	4.32	346.400	5587.38	327.41N	79.24W	==>	-326.82	
5700.00	4.32	346.400	5687.10	334.74N	81.01W	==>	-334.14	
5800.00	4.32	346.400	5786.81	342.07N	82.79W	==>	-341.45	
5900.00	4.32	346.400	5886.53	349.40N	84.56W	==>	-348.77	
6000.00	4.32	346.400	5986.24	356.73N	86.33W	==>	-356.09	
6100.00	4.32	346.400	6085.96	364.06N	88.11W	==>	-363.40	
6200.00	4.32	346.400	6185.67	371.39N	89.88W	==>	-370.72	
6300.00	4.32	346.400	6285.39	378.72N	91.66W	==>	-378.04	
6400.00	4.32	346.400	6385.10	386.05N	93.43W	==>	-385.35	
6500.00	4.32	346.400	6484.82	393.38N	95.20W	==>	-392.67	
6600.00	4.32	346.400	6584.54	400.71N	96.98W	==>	-399.99	
6700.00	2.50	336.100	6684.27	407.72N	98.75W	10.00	-406.98	
6800.00	7.78	187.170	6784.02	402.98N	100.48W	10.00	-402.24	
6900.00	17.74	182.930	6881.43	381.00N	102.11W	10.00	-380.24	
7000.00	27.73	181.700	6973.54	342.43N	103.59W	10.00	-341.66	
7100.00	37.72	181.090	7057.56	288.45N	104.86W	10.00	-287.67	
7200.00	47.72	180.710	7130.93	220.70N	105.91W	10.00	-219.92	
7300.00	57.72	180.430	7191.43	141.24N	106.68W	10.00	-140.45	
7400.00	67.72	180.210	7237.21	52.48N	107.16W	10.00	-51.69	
7500.00	77.71	180.010	7266.88	42.89S	107.34W	10.00	43.67	
7600.00	87.71	179.830	7279.54	141.95S	107.20W	10.00	142.74	
7700.00	90.12	179.790	7279.84	241.95S	106.85W	==>	242.72	
7800.00	90.12	179.790	7279.64	341.95S	106.49W	==>	342.72	
7900.00	90.12	179.790	7279.43	441.95S	106.12W	==>	442.71	
8000.00	90.12	179.790	7279.22	541.94S	105.76W	==>	542.71	
8100.00	90.12	179.790	7279.01	641.94S	105.39W	==>	642.70	
8200.00	90.12	179.790	7278.81	741.94S	105.03W	==>	742.69	
8300.00	90.12	179.790	7278.60	841.94S	104.67W	==>	842.69	
8400.00	90.12	179.790	7278.39	941.94S	104.30W	==>	942.68	
8500.00	90.12	179.790	7278.19	1041.94S	103.94W	==>	1042.67	
8600.00	90.12	179.790	7277.98	1141.94S	103.58W	==>	1142.67	
8700.00	90.12	179.790	7277.77	1241.94S	103.21W	==>	1242.66	
8800.00	90.12	179.790	7277.56	1341.94S	102.85W	==>	1342.66	
8900.00	90.12	179.790	7277.36	1441.94S	102.49W	==>	1442.65	

All data is in Feet unless otherwise stated
Coordinates are from Slot MD's are from Rig and TVD's are from Rig (Planned Datum #1 4935.0ft above Mean Sea Level)
Vertical Section is from 0.00N 0.00E on azimuth 180.420 degrees
Bottom hole distance is 9820.15 Feet on azimuth 180.42 degrees from Wellhead
Calculation method uses Minimum Curvature method
Prepared by Microsoft
Date Printed: 27-Mar-2018



SYSDRILL
Well Design Combined Report
Wellbore: W EAST AULT M-18-19HN (PWB)



Interpolated Wellpath								
MD[ft]	Inc[deg]	Azi[deg]	TVD[ft]	North[ft]	East[ft]	Dogleg [deg/100ft]	Vertical Section[ft]	All Station Comments
9000.00	90.12	179.790	7277.15	1541.94S	102.12W	==>	1542.64	
9100.00	90.12	179.790	7276.94	1641.93S	101.76W	==>	1642.64	
9200.00	90.12	179.790	7276.74	1741.93S	101.39W	==>	1742.63	
9300.00	90.12	179.790	7276.53	1841.93S	101.03W	==>	1842.62	
9400.00	90.12	179.790	7276.32	1941.93S	100.67W	==>	1942.62	
9500.00	90.12	179.790	7276.11	2041.93S	100.30W	==>	2042.61	
9600.00	90.12	179.790	7275.91	2141.93S	99.94W	==>	2142.61	
9700.00	90.12	179.790	7275.70	2241.93S	99.58W	==>	2242.60	
9800.00	90.12	179.790	7275.49	2341.93S	99.21W	==>	2342.59	
9900.00	90.12	179.790	7275.28	2441.93S	98.85W	==>	2442.59	
10000.00	90.12	179.790	7275.08	2541.93S	98.49W	==>	2542.58	
10100.00	90.12	179.790	7274.87	2641.93S	98.12W	==>	2642.57	
10200.00	90.12	179.790	7274.66	2741.93S	97.76W	==>	2742.57	
10300.00	90.12	179.790	7274.46	2841.92S	97.39W	==>	2842.56	
10400.00	90.12	179.790	7274.25	2941.92S	97.03W	==>	2942.56	
10500.00	90.12	179.790	7274.04	3041.92S	96.67W	==>	3042.55	
10600.00	90.12	179.790	7273.83	3141.92S	96.30W	==>	3142.54	
10700.00	90.12	179.790	7273.63	3241.92S	95.94W	==>	3242.54	
10800.00	90.12	179.790	7273.42	3341.92S	95.58W	==>	3342.53	
10900.00	90.12	179.790	7273.21	3441.92S	95.21W	==>	3442.52	
11000.00	90.12	179.790	7273.01	3541.92S	94.85W	==>	3542.52	
11100.00	90.12	179.790	7272.80	3641.92S	94.49W	==>	3642.51	
11200.00	90.12	179.790	7272.59	3741.92S	94.12W	==>	3742.51	
11300.00	90.12	179.790	7272.38	3841.92S	93.76W	==>	3842.50	
11400.00	90.12	179.790	7272.18	3941.91S	93.39W	==>	3942.49	
11500.00	90.12	179.790	7271.97	4041.91S	93.03W	==>	4042.49	
11600.00	90.12	179.790	7271.76	4141.91S	92.67W	==>	4142.48	
11700.00	90.12	179.790	7271.56	4241.91S	92.30W	==>	4242.47	
11800.00	90.12	179.790	7271.35	4341.91S	91.94W	==>	4342.47	
11900.00	90.12	179.790	7271.14	4441.91S	91.58W	==>	4442.46	
12000.00	90.12	179.790	7270.93	4541.91S	91.21W	==>	4542.46	
12100.00	90.12	179.790	7270.73	4641.91S	90.85W	==>	4642.45	
12200.00	90.12	179.790	7270.52	4741.91S	90.48W	==>	4742.44	
12300.00	90.12	179.790	7270.31	4841.91S	90.12W	==>	4842.44	
12400.00	90.12	179.790	7270.11	4941.91S	89.76W	==>	4942.43	
12500.00	90.12	179.790	7269.90	5041.90S	89.39W	==>	5042.43	
12600.00	90.12	179.790	7269.69	5141.90S	89.03W	==>	5142.42	
12700.00	90.12	179.790	7269.48	5241.90S	88.67W	==>	5242.41	
12800.00	90.12	179.790	7269.28	5341.90S	88.30W	==>	5342.41	
12900.00	90.12	179.790	7269.07	5441.90S	87.94W	==>	5442.40	
13000.00	90.12	179.790	7268.86	5541.90S	87.58W	==>	5542.39	
13100.00	90.12	179.790	7268.66	5641.90S	87.21W	==>	5642.39	
13200.00	90.12	179.790	7268.45	5741.90S	86.85W	==>	5742.38	
13300.00	90.12	179.790	7268.24	5841.90S	86.48W	==>	5842.38	
13400.00	90.12	179.790	7268.03	5941.90S	86.12W	==>	5942.37	
13500.00	90.12	179.790	7267.83	6041.90S	85.76W	==>	6042.36	
13600.00	90.12	179.790	7267.62	6141.90S	85.39W	==>	6142.36	
13700.00	90.12	179.790	7267.41	6241.89S	85.03W	==>	6242.35	
13800.00	90.12	179.790	7267.21	6341.89S	84.67W	==>	6342.34	
13900.00	90.12	179.790	7267.00	6441.89S	84.30W	==>	6442.34	
14000.00	90.12	179.790	7266.79	6541.89S	83.94W	==>	6542.33	
14100.00	90.12	179.790	7266.58	6641.89S	83.58W	==>	6642.33	
14200.00	90.12	179.790	7266.38	6741.89S	83.21W	==>	6742.32	
14300.00	90.12	179.790	7266.17	6841.89S	82.85W	==>	6842.31	
14400.00	90.12	179.790	7265.96	6941.89S	82.48W	==>	6942.31	
14500.00	90.12	179.790	7265.76	7041.89S	82.12W	==>	7042.30	
14600.00	90.12	179.790	7265.55	7141.89S	81.76W	==>	7142.29	
14700.00	90.12	179.790	7265.34	7241.89S	81.39W	==>	7242.29	
14800.00	90.12	179.790	7265.13	7341.88S	81.03W	==>	7342.28	

All data is in Feet unless otherwise stated
Coordinates are from Slot MD's are from Rig and TVD's are from Rig (Planned Datum #1 4935.0ft above Mean Sea Level)
Vertical Section is from 0.00N 0.00E on azimuth 180.420 degrees
Bottom hole distance is 9820.15 Feet on azimuth 180.42 degrees from Wellhead
Calculation method uses Minimum Curvature method
Prepared by Microsoft
Date Printed: 27-Mar-2018



SYS DRILL
Well Design Combined Report
Wellbore: W EAST AULT M-18-19HN (PWB)



Interpolated Wellpath								
MD[ft]	Inc[deg]	Azi[deg]	TVD[ft]	North[ft]	East[ft]	Dogleg [deg/100ft]	Vertical Section[ft]	All Station Comments
14900.00	90.12	179.790	7264.93	7441.88S	80.67W	==>	7442.28	
15000.00	90.12	179.790	7264.72	7541.88S	80.30W	==>	7542.27	
15100.00	90.12	179.790	7264.51	7641.88S	79.94W	==>	7642.26	
15200.00	90.12	179.790	7264.31	7741.88S	79.58W	==>	7742.26	
15300.00	90.12	179.790	7264.10	7841.88S	79.21W	==>	7842.25	
15400.00	90.12	179.790	7263.89	7941.88S	78.85W	==>	7942.24	
15500.00	90.12	179.790	7263.68	8041.88S	78.48W	==>	8042.24	
15600.00	90.12	179.790	7263.48	8141.88S	78.12W	==>	8142.23	
15700.00	90.12	179.790	7263.27	8241.88S	77.76W	==>	8242.23	
15800.00	90.12	179.790	7263.06	8341.88S	77.39W	==>	8342.22	
15900.00	90.12	179.790	7262.85	8441.88S	77.03W	==>	8442.21	
16000.00	90.12	179.790	7262.65	8541.87S	76.67W	==>	8542.21	
16100.00	90.12	179.790	7262.44	8641.87S	76.30W	==>	8642.20	
16200.00	90.12	179.790	7262.23	8741.87S	75.94W	==>	8742.19	
16300.00	90.12	179.790	7262.03	8841.87S	75.58W	==>	8842.19	
16400.00	90.12	179.790	7261.82	8941.87S	75.21W	==>	8942.18	
16500.00	90.12	179.790	7261.61	9041.87S	74.85W	==>	9042.18	
16600.00	90.12	179.790	7261.40	9141.87S	74.48W	==>	9142.17	
16700.00	90.12	179.790	7261.20	9241.87S	74.12W	==>	9242.16	
16800.00	90.12	179.790	7260.99	9341.87S	73.76W	==>	9342.16	
16900.00	90.12	179.790	7260.78	9441.87S	73.39W	==>	9442.15	
17000.00	90.12	179.790	7260.58	9541.87S	73.03W	==>	9542.14	
17100.00	90.12	179.790	7260.37	9641.86S	72.67W	==>	9642.14	
17200.00	90.12	179.790	7260.16	9741.86S	72.30W	==>	9742.13	
17278.03	90.12	179.790	7260.00	9819.89S	72.02W	==>	9820.15	

All data is in Feet unless otherwise stated
Coordinates are from Slot MD's are from Rig and TVD's are from Rig (Planned Datum #1 4935.0ft above Mean Sea Level)
Vertical Section is from 0.00N 0.00E on azimuth 180.420 degrees
Bottom hole distance is 9820.15 Feet on azimuth 180.42 degrees from Wellhead
Calculation method uses Minimum Curvature method
Prepared by Microsoft
Date Printed: 27-Mar-2018



SYSDRILL
Well Design Combined Report
Wellbore: W EAST AULT M-18-19HN (PWB)



Targets							
Name	North[ft]	East[ft]	TVD[ft]	Latitude	Longitude	Northing	Easting
EAST AULT M-18-19HN - BHL	9819.89S	72.02W	7260.00	40.55472900	-104.70550900	1445917.70	3220765.98
EAST AULT M-18-19HN - EP	166.01S	107.13W	7280.00	40.58122700	-104.70532400	1455571.31	3220730.87

Survey Tool Program					
Reference	Survey Name	MD[ft]	TVD[ft]	Survey Tool	Error Model
620265	Planned	1500.00	1499.06	WdW Rate Gyro	Standard
620264	Planned	17278.03	7260.00	ISCWSA MWD	Rev 4 + SAG + FLT

Notes