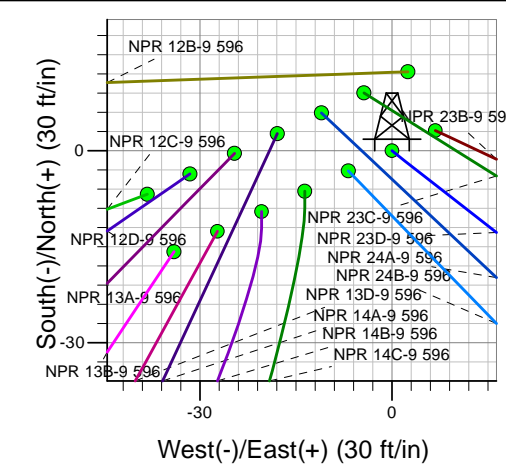
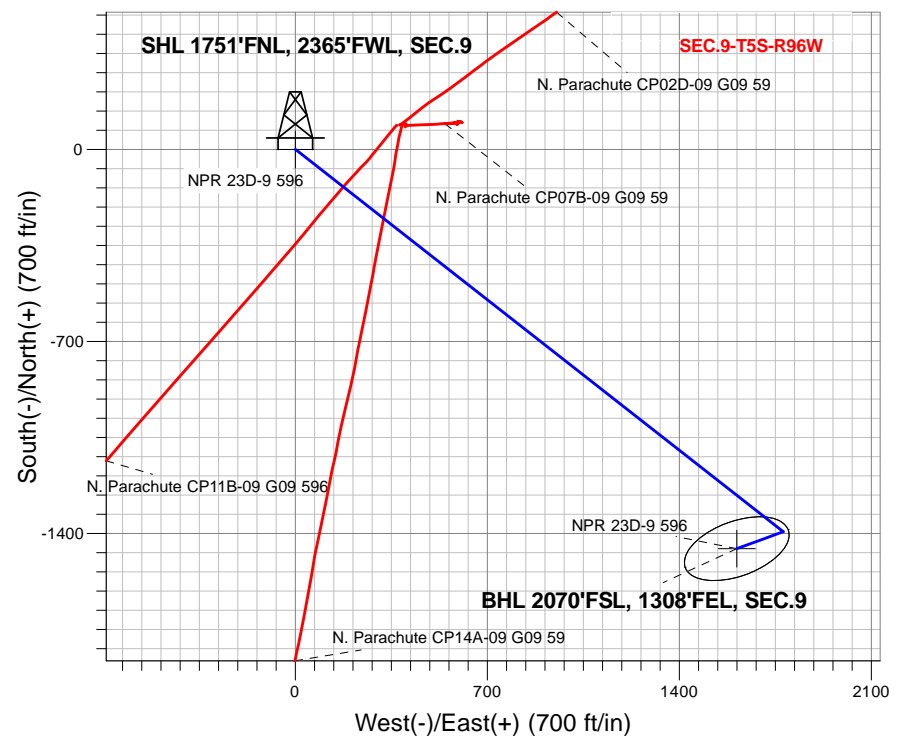
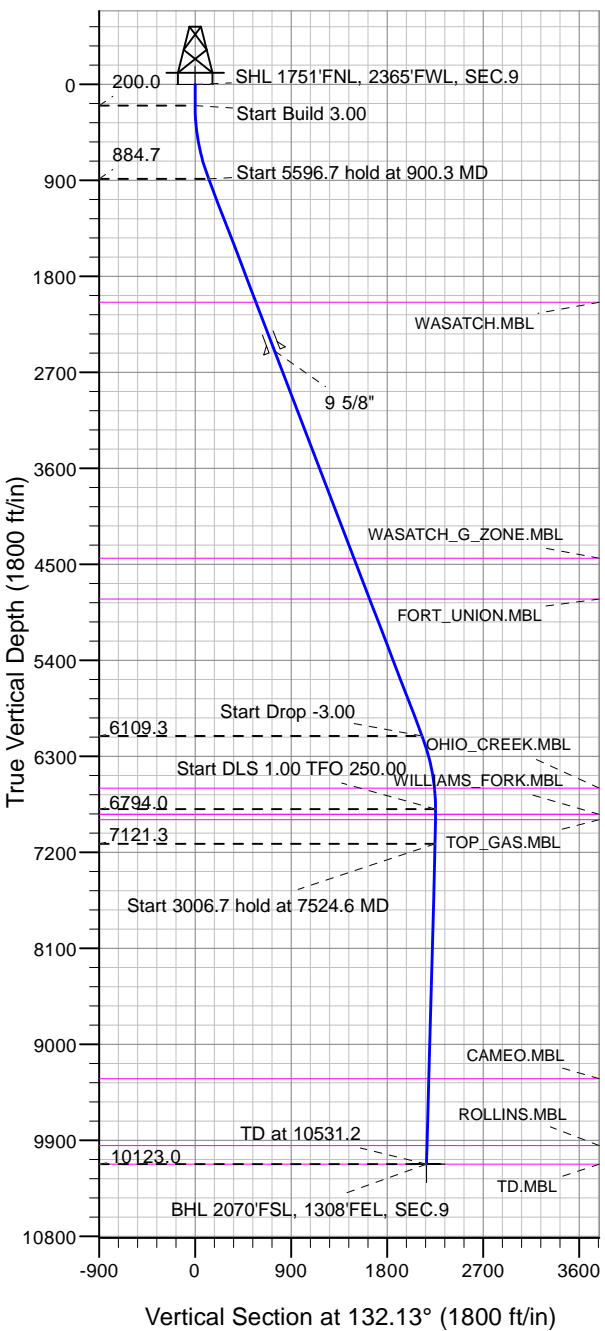


### Caerus Oil and Gas LLC



NPR 23D-9 596  
 Plan #2 (3-06-18)  
 8:16, March 16 2018

Azimuths to True North  
 Magnetic North: 9.62°

Magnetic Field  
 Strength: 51484.8nT  
 Dip Angle: 65.85°  
 Date: 3/16/2018  
 Model: HDGM

#### DESIGN TARGET DETAILS

Name	TVD	+N/-S	+E/-W	Latitude	Longitude	Shape
SHL 1751'FNL, 2365'FWL, SEC.9	1.0	0.0	0.0	39.632033	-108.174500	Point
BHL 2070'FSL, 1308'FEL, SEC.9	10123.0	-1455.6	1609.2	39.628037	-108.168787	Ellipse (Radii: L200.0 W100.0)

#### SECTION DETAILS

Sec	MD	Inc	Azi	TVD	+N/-S	+E/-W	Dleg	TFace	V Sect	Target
1	0.0	0.00	0.00	0.0	0.0	0.0	0.00	0.00	0.0	
2	200.0	0.00	0.00	200.0	0.0	0.0	0.00	0.00	0.0	
3	900.3	21.01	128.07	884.7	-78.3	99.9	3.00	128.07	126.6	
4	6496.9	21.01	128.07	6109.3	-1315.4	1679.5	0.00	0.00	2127.9	
5	7197.2	0.00	0.00	6794.0	-1393.7	1779.4	3.00	180.00	2254.6	
6	7524.6	3.27	250.00	7121.3	-1396.9	1770.6	1.00	250.00	2250.2	
7	10531.2	3.27	250.00	10123.0	-1455.6	1609.2	0.00	0.00	2169.9	BHL 2070'FSL, 1308'FEL, SEC.9



## Directional

### **Caerus Oil and Gas LLC**

**SEC.9-T5S-R96W**

**NPR G09 596 Pad Sec.9-T5S-R96W**

**NPR 23D-9 596**

**Wellbore #1**

**Plan: Plan #2 (3-06-18)**

### **Standard Planning Report**

**16 March, 2018**

<b>Database:</b>	US_EDM	<b>Local Co-ordinate Reference:</b>	Well NPR 23D-9 596
<b>Company:</b>	Caerus Oil and Gas LLC	<b>TVD Reference:</b>	WELL @ 7670.0ft (Original Well Elev)
<b>Project:</b>	SEC.9-T5S-R96W	<b>MD Reference:</b>	WELL @ 7670.0ft (Original Well Elev)
<b>Site:</b>	NPR G09 596 Pad Sec.9-T5S-R96W	<b>North Reference:</b>	True
<b>Well:</b>	NPR 23D-9 596	<b>Survey Calculation Method:</b>	Minimum Curvature
<b>Wellbore:</b>	Wellbore #1		
<b>Design:</b>	Plan #2 (3-06-18)		

<b>Project</b>	SEC.9-T5S-R96W, Garfield County, CO		
<b>Map System:</b>	Universal Transverse Mercator (US Survey Feet)	<b>System Datum:</b>	Mean Sea Level
<b>Geo Datum:</b>	NAD 1927 - Western US		Using Well Reference Point
<b>Map Zone:</b>	Zone 12N (114 W to 108 W)		Using geodetic scale factor

<b>Site</b>	NPR G09 596 Pad Sec.9-T5S-R96W				
<b>Site Position:</b>	<b>Northing:</b>	14,404,590.33 usft	<b>Latitude:</b>	39.632067	
<b>From:</b> Lat/Long	<b>Easting:</b>	2,436,015.01 usft	<b>Longitude:</b>	-108.174492	
<b>Position Uncertainty:</b>	0.0 ft	<b>Slot Radius:</b>	13-3/16 "	<b>Grid Convergence:</b>	1.80 °

<b>Well</b>	NPR 23D-9 596					
<b>Well Position</b>	<b>+N/-S</b>	-12.3 ft	<b>Northing:</b>	14,404,577.95 usft	<b>Latitude:</b>	39.632033
	<b>+E/-W</b>	-2.5 ft	<b>Easting:</b>	2,436,012.89 usft	<b>Longitude:</b>	-108.174501
<b>Position Uncertainty</b>		0.0 ft	<b>Wellhead Elevation:</b>	0.0 ft	<b>Ground Level:</b>	7,640.0 ft

<b>Wellbore</b>	Wellbore #1				
<b>Magnetics</b>	<b>Model Name</b>	<b>Sample Date</b>	<b>Declination (°)</b>	<b>Dip Angle (°)</b>	<b>Field Strength (nT)</b>
	HDGM	3/16/2018	9.62	65.85	51,485

<b>Design</b>	Plan #2 (3-06-18)			
<b>Audit Notes:</b>				
<b>Version:</b>	<b>Phase:</b>	PROTOTYPE	<b>Tie On Depth:</b>	0.0
<b>Vertical Section:</b>	<b>Depth From (TVD) (ft)</b>	<b>+N/-S (ft)</b>	<b>+E/-W (ft)</b>	<b>Direction (°)</b>
	0.0	0.0	0.0	132.13

<b>Plan Sections</b>										
Measured Depth (ft)	Inclination (°)	Azimuth (°)	Vertical Depth (ft)	+N/-S (ft)	+E/-W (ft)	Dogleg Rate (°/100usft)	Build Rate (°/100usft)	Turn Rate (°/100usft)	TFO (°)	Target
0.0	0.00	0.00	0.0	0.0	0.0	0.00	0.00	0.00	0.00	
200.0	0.00	0.00	200.0	0.0	0.0	0.00	0.00	0.00	0.00	
900.3	21.01	128.07	884.7	-78.3	99.9	3.00	3.00	0.00	128.07	
6,496.9	21.01	128.07	6,109.3	-1,315.4	1,679.5	0.00	0.00	0.00	0.00	
7,197.2	0.00	0.00	6,794.0	-1,393.7	1,779.4	3.00	-3.00	0.00	180.00	
7,524.6	3.27	250.00	7,121.3	-1,396.9	1,770.6	1.00	1.00	-33.59	250.00	
10,531.2	3.27	250.00	10,123.0	-1,455.6	1,609.2	0.00	0.00	0.00	0.00	BHL 2070'FSL, 1308'I

<b>Database:</b>	US_EDM	<b>Local Co-ordinate Reference:</b>	Well NPR 23D-9 596
<b>Company:</b>	Caerus Oil and Gas LLC	<b>TVD Reference:</b>	WELL @ 7670.0ft (Original Well Elev)
<b>Project:</b>	SEC.9-T5S-R96W	<b>MD Reference:</b>	WELL @ 7670.0ft (Original Well Elev)
<b>Site:</b>	NPR G09 596 Pad Sec.9-T5S-R96W	<b>North Reference:</b>	True
<b>Well:</b>	NPR 23D-9 596	<b>Survey Calculation Method:</b>	Minimum Curvature
<b>Wellbore:</b>	Wellbore #1		
<b>Design:</b>	Plan #2 (3-06-18)		

Planned Survey									
Measured Depth (ft)	Inclination (°)	Azimuth (°)	Vertical Depth (ft)	+N/-S (ft)	+E/-W (ft)	Vertical Section (ft)	Dogleg Rate (°/100usft)	Build Rate (°/100usft)	Turn Rate (°/100usft)
0.0	0.00	0.00	0.0	0.0	0.0	0.0	0.00	0.00	0.00
1.0	0.00	0.00	1.0	0.0	0.0	0.0	0.00	0.00	0.00
<b>SHL 1751'FNL, 2365'FWL, SEC.9</b>									
100.0	0.00	0.00	100.0	0.0	0.0	0.0	0.00	0.00	0.00
200.0	0.00	0.00	200.0	0.0	0.0	0.0	0.00	0.00	0.00
300.0	3.00	128.07	300.0	-1.6	2.1	2.6	3.00	3.00	0.00
400.0	6.00	128.07	399.6	-6.5	8.2	10.4	3.00	3.00	0.00
500.0	9.00	128.07	498.8	-14.5	18.5	23.5	3.00	3.00	0.00
600.0	12.00	128.07	597.1	-25.7	32.9	41.6	3.00	3.00	0.00
700.0	15.00	128.07	694.3	-40.1	51.2	64.9	3.00	3.00	0.00
800.0	18.00	128.07	790.2	-57.6	73.6	93.2	3.00	3.00	0.00
900.0	21.00	128.07	884.4	-78.2	99.9	126.5	3.00	3.00	0.00
900.3	21.01	128.07	884.7	-78.3	99.9	126.6	3.00	3.00	0.00
1,000.0	21.01	128.07	977.8	-100.3	128.1	162.3	0.00	0.00	0.00
1,100.0	21.01	128.07	1,071.1	-122.4	156.3	198.1	0.00	0.00	0.00
1,200.0	21.01	128.07	1,164.5	-144.5	184.5	233.8	0.00	0.00	0.00
1,300.0	21.01	128.07	1,257.8	-166.6	212.8	269.6	0.00	0.00	0.00
1,400.0	21.01	128.07	1,351.2	-188.7	241.0	305.3	0.00	0.00	0.00
1,500.0	21.01	128.07	1,444.6	-210.9	269.2	341.1	0.00	0.00	0.00
1,600.0	21.01	128.07	1,537.9	-233.0	297.4	376.8	0.00	0.00	0.00
1,700.0	21.01	128.07	1,631.3	-255.1	325.6	412.6	0.00	0.00	0.00
1,800.0	21.01	128.07	1,724.6	-277.2	353.9	448.4	0.00	0.00	0.00
1,900.0	21.01	128.07	1,818.0	-299.3	382.1	484.1	0.00	0.00	0.00
2,000.0	21.01	128.07	1,911.3	-321.4	410.3	519.9	0.00	0.00	0.00
2,100.0	21.01	128.07	2,004.7	-343.5	438.5	555.6	0.00	0.00	0.00
2,140.0	21.01	128.07	2,042.0	-352.3	449.8	569.9	0.00	0.00	0.00
<b>WASATCH.MBL</b>									
2,200.0	21.01	128.07	2,098.0	-365.6	466.8	591.4	0.00	0.00	0.00
2,300.0	21.01	128.07	2,191.4	-387.7	495.0	627.2	0.00	0.00	0.00
2,400.0	21.01	128.07	2,284.7	-409.8	523.2	662.9	0.00	0.00	0.00
2,500.0	21.01	128.07	2,378.1	-431.9	551.4	698.7	0.00	0.00	0.00
2,600.0	21.01	128.07	2,471.4	-454.0	579.7	734.4	0.00	0.00	0.00
2,630.6	21.01	128.07	2,500.0	-460.8	588.3	745.4	0.00	0.00	0.00
<b>9 5/8"</b>									
2,700.0	21.01	128.07	2,564.8	-476.1	607.9	770.2	0.00	0.00	0.00
2,800.0	21.01	128.07	2,658.1	-498.2	636.1	806.0	0.00	0.00	0.00
2,900.0	21.01	128.07	2,751.5	-520.3	664.3	841.7	0.00	0.00	0.00
3,000.0	21.01	128.07	2,844.9	-542.4	692.5	877.5	0.00	0.00	0.00
3,100.0	21.01	128.07	2,938.2	-564.5	720.8	913.2	0.00	0.00	0.00
3,200.0	21.01	128.07	3,031.6	-586.6	749.0	949.0	0.00	0.00	0.00
3,300.0	21.01	128.07	3,124.9	-608.7	777.2	984.8	0.00	0.00	0.00
3,400.0	21.01	128.07	3,218.3	-630.8	805.4	1,020.5	0.00	0.00	0.00
3,500.0	21.01	128.07	3,311.6	-653.0	833.7	1,056.3	0.00	0.00	0.00
3,600.0	21.01	128.07	3,405.0	-675.1	861.9	1,092.0	0.00	0.00	0.00
3,700.0	21.01	128.07	3,498.3	-697.2	890.1	1,127.8	0.00	0.00	0.00
3,800.0	21.01	128.07	3,591.7	-719.3	918.3	1,163.5	0.00	0.00	0.00
3,900.0	21.01	128.07	3,685.0	-741.4	946.5	1,199.3	0.00	0.00	0.00
4,000.0	21.01	128.07	3,778.4	-763.5	974.8	1,235.1	0.00	0.00	0.00
4,100.0	21.01	128.07	3,871.7	-785.6	1,003.0	1,270.8	0.00	0.00	0.00
4,200.0	21.01	128.07	3,965.1	-807.7	1,031.2	1,306.6	0.00	0.00	0.00
4,300.0	21.01	128.07	4,058.4	-829.8	1,059.4	1,342.3	0.00	0.00	0.00
4,400.0	21.01	128.07	4,151.8	-851.9	1,087.7	1,378.1	0.00	0.00	0.00
4,500.0	21.01	128.07	4,245.2	-874.0	1,115.9	1,413.9	0.00	0.00	0.00

<b>Database:</b>	US_EDM	<b>Local Co-ordinate Reference:</b>	Well NPR 23D-9 596
<b>Company:</b>	Caerus Oil and Gas LLC	<b>TVD Reference:</b>	WELL @ 7670.0ft (Original Well Elev)
<b>Project:</b>	SEC.9-T5S-R96W	<b>MD Reference:</b>	WELL @ 7670.0ft (Original Well Elev)
<b>Site:</b>	NPR G09 596 Pad Sec.9-T5S-R96W	<b>North Reference:</b>	True
<b>Well:</b>	NPR 23D-9 596	<b>Survey Calculation Method:</b>	Minimum Curvature
<b>Wellbore:</b>	Wellbore #1		
<b>Design:</b>	Plan #2 (3-06-18)		

Planned Survey										
Measured Depth (ft)	Inclination (°)	Azimuth (°)	Vertical Depth (ft)	+N/-S (ft)	+E/-W (ft)	Vertical Section (ft)	Dogleg Rate (°/100usft)	Build Rate (°/100usft)	Turn Rate (°/100usft)	
4,600.0	21.01	128.07	4,338.5	-896.1	1,144.1	1,449.6	0.00	0.00	0.00	
4,700.0	21.01	128.07	4,431.9	-918.2	1,172.3	1,485.4	0.00	0.00	0.00	
4,710.9	21.01	128.07	4,442.0	-920.6	1,175.4	1,489.3	0.00	0.00	0.00	
<b>WASATCH_G_ZONE.MBL</b>										
4,800.0	21.01	128.07	4,525.2	-940.3	1,200.6	1,521.1	0.00	0.00	0.00	
4,900.0	21.01	128.07	4,618.6	-962.4	1,228.8	1,556.9	0.00	0.00	0.00	
5,000.0	21.01	128.07	4,711.9	-984.5	1,257.0	1,592.7	0.00	0.00	0.00	
5,100.0	21.01	128.07	4,805.3	-1,006.6	1,285.2	1,628.4	0.00	0.00	0.00	
5,121.1	21.01	128.07	4,825.0	-1,011.3	1,291.2	1,636.0	0.00	0.00	0.00	
<b>FORT_UNION.MBL</b>										
5,200.0	21.01	128.07	4,898.6	-1,028.7	1,313.4	1,664.2	0.00	0.00	0.00	
5,300.0	21.01	128.07	4,992.0	-1,050.8	1,341.7	1,699.9	0.00	0.00	0.00	
5,400.0	21.01	128.07	5,085.3	-1,073.0	1,369.9	1,735.7	0.00	0.00	0.00	
5,500.0	21.01	128.07	5,178.7	-1,095.1	1,398.1	1,771.5	0.00	0.00	0.00	
5,600.0	21.01	128.07	5,272.0	-1,117.2	1,426.3	1,807.2	0.00	0.00	0.00	
5,700.0	21.01	128.07	5,365.4	-1,139.3	1,454.6	1,843.0	0.00	0.00	0.00	
5,800.0	21.01	128.07	5,458.7	-1,161.4	1,482.8	1,878.7	0.00	0.00	0.00	
5,900.0	21.01	128.07	5,552.1	-1,183.5	1,511.0	1,914.5	0.00	0.00	0.00	
6,000.0	21.01	128.07	5,645.5	-1,205.6	1,539.2	1,950.2	0.00	0.00	0.00	
6,100.0	21.01	128.07	5,738.8	-1,227.7	1,567.4	1,986.0	0.00	0.00	0.00	
6,200.0	21.01	128.07	5,832.2	-1,249.8	1,595.7	2,021.8	0.00	0.00	0.00	
6,300.0	21.01	128.07	5,925.5	-1,271.9	1,623.9	2,057.5	0.00	0.00	0.00	
6,400.0	21.01	128.07	6,018.9	-1,294.0	1,652.1	2,093.3	0.00	0.00	0.00	
6,496.9	21.01	128.07	6,109.3	-1,315.4	1,679.5	2,127.9	0.00	0.00	0.00	
6,500.0	20.91	128.07	6,112.2	-1,316.1	1,680.3	2,129.0	3.00	-3.00	0.00	
6,600.0	17.91	128.07	6,206.5	-1,336.6	1,706.5	2,162.2	3.00	-3.00	0.00	
6,700.0	14.91	128.07	6,302.4	-1,354.0	1,728.7	2,190.4	3.00	-3.00	0.00	
6,800.0	11.91	128.07	6,399.7	-1,368.3	1,747.0	2,213.5	3.00	-3.00	0.00	
6,900.0	8.91	128.07	6,498.0	-1,379.5	1,761.2	2,231.5	3.00	-3.00	0.00	
7,000.0	5.91	128.07	6,597.2	-1,387.4	1,771.4	2,244.4	3.00	-3.00	0.00	
7,001.8	5.86	128.07	6,599.0	-1,387.5	1,771.5	2,244.6	3.00	-3.00	0.00	
<b>OHIO_CREEK.MBL</b>										
7,100.0	2.91	128.07	6,696.9	-1,392.2	1,777.5	2,252.1	3.00	-3.00	0.00	
7,197.2	0.00	0.00	6,794.0	-1,393.7	1,779.4	2,254.6	3.00	-3.00	0.00	
7,200.0	0.03	250.00	6,796.8	-1,393.7	1,779.4	2,254.6	1.00	1.00	0.00	
7,247.2	0.50	250.00	6,844.0	-1,393.8	1,779.2	2,254.5	1.00	1.00	0.00	
<b>WILLIAMS_FORK.MBL</b>										
7,297.2	1.00	250.00	6,894.0	-1,394.0	1,778.6	2,254.2	1.00	1.00	0.00	
<b>TOP_GAS.MBL</b>										
7,300.0	1.03	250.00	6,896.8	-1,394.0	1,778.5	2,254.1	1.00	1.00	0.00	
7,400.0	2.03	250.00	6,996.8	-1,394.9	1,776.0	2,252.9	1.00	1.00	0.00	
7,500.0	3.03	250.00	7,096.7	-1,396.4	1,771.9	2,250.8	1.00	1.00	0.00	
7,524.6	3.27	250.00	7,121.3	-1,396.9	1,770.6	2,250.2	1.00	1.00	0.00	
7,600.0	3.27	250.00	7,196.5	-1,398.4	1,766.6	2,248.2	0.00	0.00	0.00	
7,700.0	3.27	250.00	7,296.4	-1,400.3	1,761.2	2,245.5	0.00	0.00	0.00	
7,800.0	3.27	250.00	7,396.2	-1,402.3	1,755.8	2,242.8	0.00	0.00	0.00	
7,900.0	3.27	250.00	7,496.0	-1,404.2	1,750.5	2,240.2	0.00	0.00	0.00	
8,000.0	3.27	250.00	7,595.9	-1,406.2	1,745.1	2,237.5	0.00	0.00	0.00	
8,100.0	3.27	250.00	7,695.7	-1,408.1	1,739.7	2,234.8	0.00	0.00	0.00	
8,200.0	3.27	250.00	7,795.6	-1,410.1	1,734.4	2,232.2	0.00	0.00	0.00	
8,300.0	3.27	250.00	7,895.4	-1,412.0	1,729.0	2,229.5	0.00	0.00	0.00	
8,400.0	3.27	250.00	7,995.2	-1,414.0	1,723.6	2,226.8	0.00	0.00	0.00	
8,500.0	3.27	250.00	8,095.1	-1,416.0	1,718.3	2,224.1	0.00	0.00	0.00	
8,600.0	3.27	250.00	8,194.9	-1,417.9	1,712.9	2,221.5	0.00	0.00	0.00	

<b>Database:</b>	US_EDM	<b>Local Co-ordinate Reference:</b>	Well NPR 23D-9 596
<b>Company:</b>	Caerus Oil and Gas LLC	<b>TVD Reference:</b>	WELL @ 7670.0ft (Original Well Elev)
<b>Project:</b>	SEC.9-T5S-R96W	<b>MD Reference:</b>	WELL @ 7670.0ft (Original Well Elev)
<b>Site:</b>	NPR G09 596 Pad Sec.9-T5S-R96W	<b>North Reference:</b>	True
<b>Well:</b>	NPR 23D-9 596	<b>Survey Calculation Method:</b>	Minimum Curvature
<b>Wellbore:</b>	Wellbore #1		
<b>Design:</b>	Plan #2 (3-06-18)		

Planned Survey										
Measured Depth (ft)	Inclination (°)	Azimuth (°)	Vertical Depth (ft)	+N/-S (ft)	+E/-W (ft)	Vertical Section (ft)	Dogleg Rate (°/100usft)	Build Rate (°/100usft)	Turn Rate (°/100usft)	
8,700.0	3.27	250.00	8,294.7	-1,419.9	1,707.5	2,218.8	0.00	0.00	0.00	
8,800.0	3.27	250.00	8,394.6	-1,421.8	1,702.2	2,216.1	0.00	0.00	0.00	
8,900.0	3.27	250.00	8,494.4	-1,423.8	1,696.8	2,213.5	0.00	0.00	0.00	
9,000.0	3.27	250.00	8,594.3	-1,425.7	1,691.4	2,210.8	0.00	0.00	0.00	
9,100.0	3.27	250.00	8,694.1	-1,427.7	1,686.1	2,208.1	0.00	0.00	0.00	
9,200.0	3.27	250.00	8,793.9	-1,429.6	1,680.7	2,205.5	0.00	0.00	0.00	
9,300.0	3.27	250.00	8,893.8	-1,431.6	1,675.3	2,202.8	0.00	0.00	0.00	
9,400.0	3.27	250.00	8,993.6	-1,433.5	1,670.0	2,200.1	0.00	0.00	0.00	
9,500.0	3.27	250.00	9,093.4	-1,435.5	1,664.6	2,197.4	0.00	0.00	0.00	
9,600.0	3.27	250.00	9,193.3	-1,437.4	1,659.2	2,194.8	0.00	0.00	0.00	
9,700.0	3.27	250.00	9,293.1	-1,439.4	1,653.9	2,192.1	0.00	0.00	0.00	
9,728.9	3.27	250.00	9,322.0	-1,440.0	1,652.3	2,191.3	0.00	0.00	0.00	
<b>CAMEO.MBL</b>										
9,800.0	3.27	250.00	9,392.9	-1,441.4	1,648.5	2,189.4	0.00	0.00	0.00	
9,900.0	3.27	250.00	9,492.8	-1,443.3	1,643.1	2,186.8	0.00	0.00	0.00	
10,000.0	3.27	250.00	9,592.6	-1,445.3	1,637.7	2,184.1	0.00	0.00	0.00	
10,100.0	3.27	250.00	9,692.5	-1,447.2	1,632.4	2,181.4	0.00	0.00	0.00	
10,200.0	3.27	250.00	9,792.3	-1,449.2	1,627.0	2,178.8	0.00	0.00	0.00	
10,300.0	3.27	250.00	9,892.1	-1,451.1	1,621.6	2,176.1	0.00	0.00	0.00	
10,356.0	3.27	250.00	9,948.0	-1,452.2	1,618.6	2,174.6	0.00	0.00	0.00	
<b>ROLLINS.MBL</b>										
10,400.0	3.27	250.00	9,992.0	-1,453.1	1,616.3	2,173.4	0.00	0.00	0.00	
10,500.0	3.27	250.00	10,091.8	-1,455.0	1,610.9	2,170.7	0.00	0.00	0.00	
10,531.2	3.27	250.00	10,123.0	-1,455.6	1,609.2	2,169.9	0.00	0.00	0.00	
<b>TD.MBL - BHL 2070'FSL, 1308'FEL, SEC.9</b>										

Design Targets										
Target Name	Dip Angle (°)	Dip Dir. (°)	TVD (ft)	+N/-S (ft)	+E/-W (ft)	Northing (usft)	Easting (usft)	Latitude	Longitude	
SHL 1751'FNL, 2365'FW - hit/miss target center - Shape - Point	0.00	0.00	1.0	0.0	0.0	14,404,577.95	2,436,012.89	39.632033	-108.174501	
BHL 2070'FSL, 1308'FEI - plan hits target center - Ellipse (radii L200.0 W100.0 on 250.00 azi)	0.00	0.00	10,123.0	-1,455.6	1,609.2	14,403,173.22	2,437,667.67	39.628037	-108.168788	

Casing Points						
Measured Depth (ft)	Vertical Depth (ft)	Name	Casing Diameter (")	Hole Diameter (")		
2,630.6	2,500.0	9 5/8"	9-5/8	12-1/4		

<b>Database:</b>	US_EDM	<b>Local Co-ordinate Reference:</b>	Well NPR 23D-9 596
<b>Company:</b>	Caerus Oil and Gas LLC	<b>TVD Reference:</b>	WELL @ 7670.0ft (Original Well Elev)
<b>Project:</b>	SEC.9-T5S-R96W	<b>MD Reference:</b>	WELL @ 7670.0ft (Original Well Elev)
<b>Site:</b>	NPR G09 596 Pad Sec.9-T5S-R96W	<b>North Reference:</b>	True
<b>Well:</b>	NPR 23D-9 596	<b>Survey Calculation Method:</b>	Minimum Curvature
<b>Wellbore:</b>	Wellbore #1		
<b>Design:</b>	Plan #2 (3-06-18)		

Formations						
Measured Depth (ft)	Vertical Depth (ft)	Name	Lithology	Dip (°)	Dip Direction (°)	
2,140.0	2,042.0	WASATCH.MBL		0.00		
4,710.9	4,442.0	WASATCH_G_ZONE.MBL		0.00		
5,121.1	4,825.0	FORT_UNION.MBL		0.00		
7,001.8	6,599.0	OHIO_CREEK.MBL		0.00		
7,247.2	6,844.0	WILLIAMS_FORK.MBL		0.00		
7,297.2	6,894.0	TOP_GAS.MBL		0.00		
9,728.9	9,322.0	CAMEO.MBL		0.00		
10,356.0	9,948.0	ROLLINS.MBL		0.00		
10,531.2	10,123.0	TD.MBL		0.00		