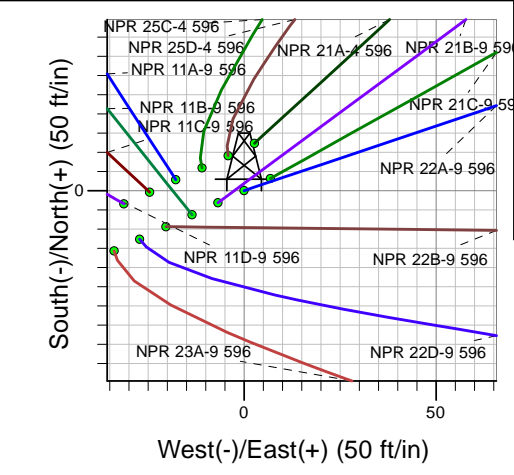
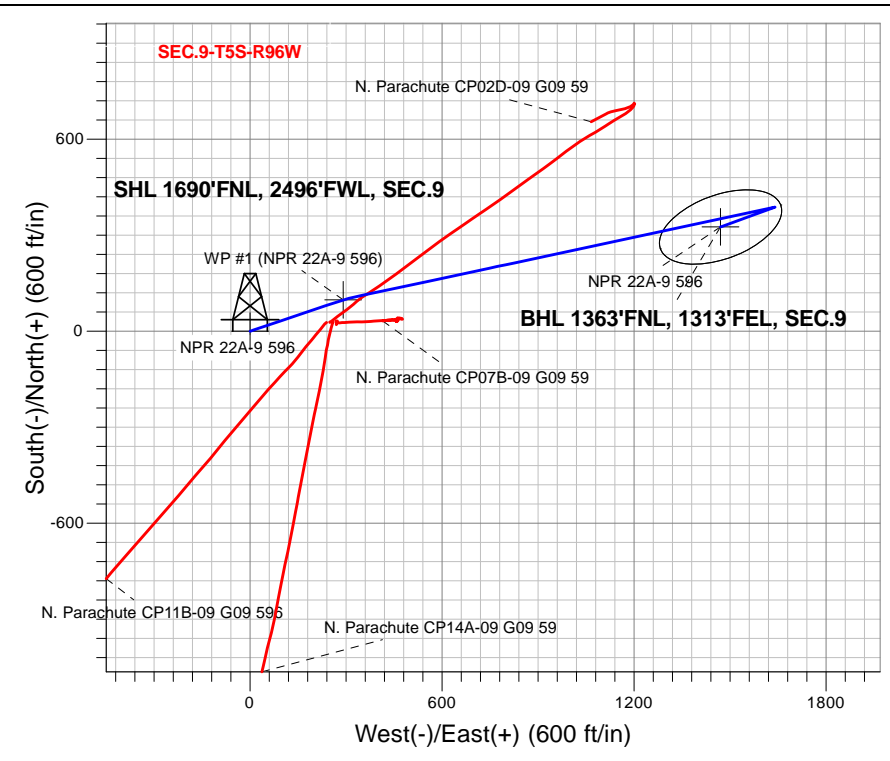
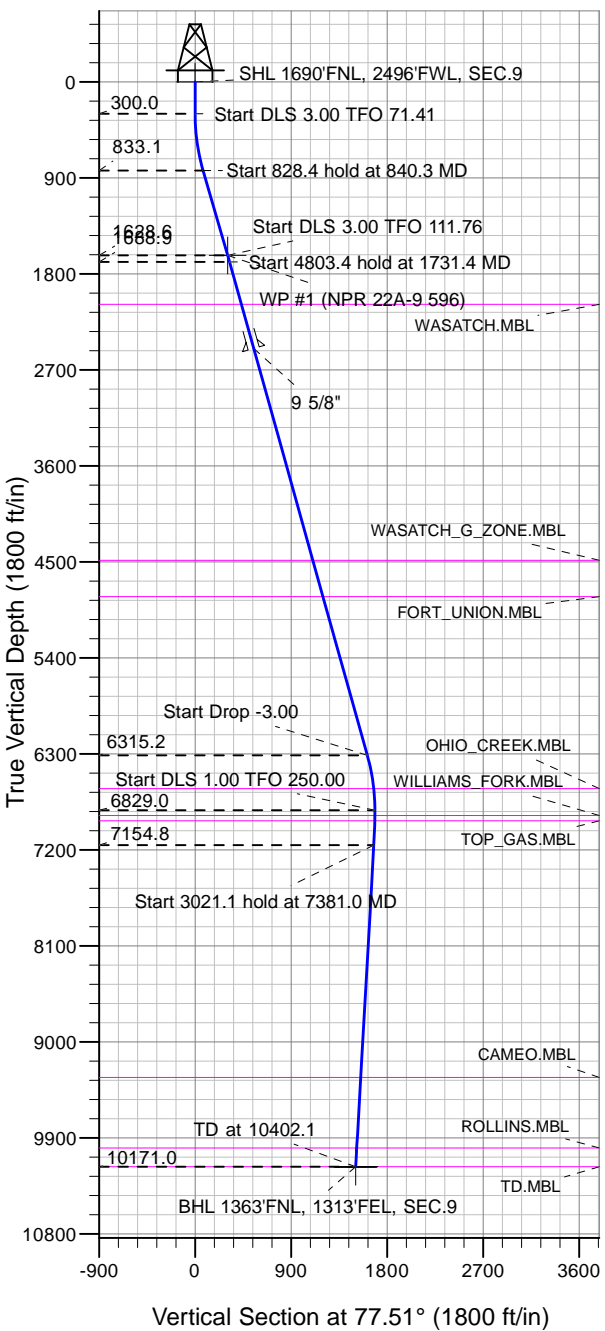


Caerus Oil and Gas LLC



NPR 22A-9 596
 Plan #2 (3-06-18)
 15:19, March 15 2018

Azimuths to True North
 Magnetic North: 9.62°

Magnetic Field
 Strength: 51485.2snT
 Dip Angle: 65.85°
 Date: 3/15/2018
 Model: HDGM

DESIGN TARGET DETAILS

Name	TVD	+N/-S	+E/-W	Latitude	Longitude	Shape
SHL 1690'FNL, 2496'FWL, SEC.9	1.0	0.0	0.0	39.632201	-108.174034	Point
WP #1 (NPR 22A-9 596)	1628.6	97.9	291.1	39.632470	-108.173000	Point
BHL 1363'FNL, 1313'FEL, SEC.9	10171.0	325.7	1470.2	39.633095	-108.168815	Ellipse (Radii: L200.0 W100.0)

SECTION DETAILS

Sec	MD	Inc	Azi	TVD	+N/-S	+E/-W	Dleg	TFace	Vsect	Target
1	0.0	0.00	0.00	0.0	0.0	0.0	0.00	0.00	0.0	
2	300.0	0.00	0.00	300.0	0.0	0.0	0.00	0.00	0.0	
3	840.3	16.21	71.41	833.1	24.2	72.0	3.00	71.41	75.5	
4	1668.7	16.21	71.41	1628.6	97.9	291.1	0.00	0.00	305.4	WP #1 (NPR 22A-9 596)
5	1731.4	15.61	77.92	1688.9	102.5	307.7	3.00	111.76	322.6	
6	6534.8	15.61	77.92	6315.2	372.9	1571.4	0.00	0.00	1614.9	
7	7055.0	0.00	0.00	6829.0	387.6	1640.3	3.00	180.00	1685.3	
8	7381.0	3.26	250.00	7154.8	384.4	1631.6	1.00	250.00	1676.1	
9	10402.1	3.26	250.00	10171.0	325.7	1470.2	0.00	0.00	1505.8	BHL 1363'FNL, 1313'FEL, SEC.9



Directional

Caerus Oil and Gas LLC

SEC.9-T5S-R96W

NPR G09 596 Pad Sec.9-T5S-R96W

NPR 22A-9 596

Wellbore #1

Plan: Plan #2 (3-06-18)

Standard Planning Report

15 March, 2018

Database:	US_EDM	Local Co-ordinate Reference:	Well NPR 22A-9 596
Company:	Caerus Oil and Gas LLC	TVD Reference:	WELL @ 7670.0ft (Original Well Elev)
Project:	SEC.9-T5S-R96W	MD Reference:	WELL @ 7670.0ft (Original Well Elev)
Site:	NPR G09 596 Pad Sec.9-T5S-R96W	North Reference:	True
Well:	NPR 22A-9 596	Survey Calculation Method:	Minimum Curvature
Wellbore:	Wellbore #1		
Design:	Plan #2 (3-06-18)		

Project	SEC.9-T5S-R96W, Garfield County, CO		
Map System:	Universal Transverse Mercator (US Survey Feet)	System Datum:	Mean Sea Level
Geo Datum:	NAD 1927 - Western US		Using Well Reference Point
Map Zone:	Zone 12N (114 W to 108 W)		Using geodetic scale factor

Site	NPR G09 596 Pad Sec.9-T5S-R96W				
Site Position:	Northing:	14,404,590.33 usft	Latitude:	39.632067	
From:	Lat/Long	Easting:	2,436,015.01 usft	Longitude:	-108.174492
Position Uncertainty:	0.0 ft	Slot Radius:	13-3/16 "	Grid Convergence:	1.80 °

Well	NPR 22A-9 596					
Well Position	+N/-S	48.7 ft	Northing:	14,404,643.12 usft	Latitude:	39.632201
	+E/-W	128.8 ft	Easting:	2,436,142.29 usft	Longitude:	-108.174034
Position Uncertainty		0.0 ft	Wellhead Elevation:	0.0 ft	Ground Level:	7,640.0 ft

Wellbore	Wellbore #1				
Magnetics	Model Name	Sample Date	Declination (°)	Dip Angle (°)	Field Strength (nT)
	HDGM	3/15/2018	9.62	65.85	51,485

Design	Plan #2 (3-06-18)			
Audit Notes:				
Version:	Phase:	PROTOTYPE	Tie On Depth:	0.0
Vertical Section:	Depth From (TVD) (ft)	+N/-S (ft)	+E/-W (ft)	Direction (°)
	0.0	0.0	0.0	77.51

Plan Sections										
Measured Depth (ft)	Inclination (°)	Azimuth (°)	Vertical Depth (ft)	+N/-S (ft)	+E/-W (ft)	Dogleg Rate (°/100usft)	Build Rate (°/100usft)	Turn Rate (°/100usft)	TFO (°)	Target
0.0	0.00	0.00	0.0	0.0	0.0	0.00	0.00	0.00	0.00	
300.0	0.00	0.00	300.0	0.0	0.0	0.00	0.00	0.00	0.00	
840.3	16.21	71.41	833.1	24.2	72.0	3.00	3.00	13.22	71.41	
1,668.7	16.21	71.41	1,628.6	97.9	291.1	0.00	0.00	0.00	0.00	WP #1 (NPR 22A-9 596)
1,731.4	15.61	77.92	1,688.9	102.5	307.7	3.00	-0.96	10.38	111.76	
6,534.8	15.61	77.92	6,315.2	372.9	1,571.4	0.00	0.00	0.00	0.00	
7,055.0	0.00	0.00	6,829.0	387.6	1,640.3	3.00	-3.00	0.00	180.00	
7,381.0	3.26	250.00	7,154.8	384.4	1,631.6	1.00	1.00	-33.74	250.00	
10,402.1	3.26	250.00	10,171.0	325.7	1,470.2	0.00	0.00	0.00	0.00	BHL 1363'FNL, 1313'

Database:	US_EDM	Local Co-ordinate Reference:	Well NPR 22A-9 596
Company:	Caerus Oil and Gas LLC	TVD Reference:	WELL @ 7670.0ft (Original Well Elev)
Project:	SEC.9-T5S-R96W	MD Reference:	WELL @ 7670.0ft (Original Well Elev)
Site:	NPR G09 596 Pad Sec.9-T5S-R96W	North Reference:	True
Well:	NPR 22A-9 596	Survey Calculation Method:	Minimum Curvature
Wellbore:	Wellbore #1		
Design:	Plan #2 (3-06-18)		

Planned Survey										
Measured Depth (ft)	Inclination (°)	Azimuth (°)	Vertical Depth (ft)	+N/-S (ft)	+E/-W (ft)	Vertical Section (ft)	Dogleg Rate (°/100usft)	Build Rate (°/100usft)	Turn Rate (°/100usft)	
0.0	0.00	0.00	0.0	0.0	0.0	0.0	0.00	0.00	0.00	
1.0	0.00	0.00	1.0	0.0	0.0	0.0	0.00	0.00	0.00	
SHL 1690'FNL, 2496'FWL, SEC.9										
100.0	0.00	0.00	100.0	0.0	0.0	0.0	0.00	0.00	0.00	
200.0	0.00	0.00	200.0	0.0	0.0	0.0	0.00	0.00	0.00	
300.0	0.00	0.00	300.0	0.0	0.0	0.0	0.00	0.00	0.00	
400.0	3.00	71.41	400.0	0.8	2.5	2.6	3.00	3.00	0.00	
500.0	6.00	71.41	499.6	3.3	9.9	10.4	3.00	3.00	0.00	
600.0	9.00	71.41	598.8	7.5	22.3	23.4	3.00	3.00	0.00	
700.0	12.00	71.41	697.1	13.3	39.6	41.5	3.00	3.00	0.00	
800.0	15.00	71.41	794.3	20.7	61.7	64.7	3.00	3.00	0.00	
840.3	16.21	71.41	833.1	24.2	72.0	75.5	3.00	3.00	0.00	
900.0	16.21	71.41	890.4	29.5	87.8	92.1	0.00	0.00	0.00	
1,000.0	16.21	71.41	986.5	38.4	114.2	119.8	0.00	0.00	0.00	
1,100.0	16.21	71.41	1,082.5	47.3	140.7	147.6	0.00	0.00	0.00	
1,200.0	16.21	71.41	1,178.5	56.2	167.1	175.3	0.00	0.00	0.00	
1,300.0	16.21	71.41	1,274.5	65.1	193.6	203.1	0.00	0.00	0.00	
1,400.0	16.21	71.41	1,370.6	74.0	220.1	230.8	0.00	0.00	0.00	
1,500.0	16.21	71.41	1,466.6	82.9	246.5	258.6	0.00	0.00	0.00	
1,600.0	16.21	71.41	1,562.6	91.8	273.0	286.4	0.00	0.00	0.00	
1,668.7	16.21	71.41	1,628.6	97.9	291.1	305.4	0.00	0.00	0.00	
WP #1 (NPR 22A-9 596)										
1,700.0	15.88	74.60	1,658.7	100.4	299.4	314.1	3.00	-1.04	10.18	
1,731.4	15.61	77.92	1,688.9	102.5	307.7	322.6	3.00	-0.88	10.57	
1,800.0	15.61	77.92	1,755.0	106.3	325.7	341.0	0.00	0.00	0.00	
1,900.0	15.61	77.92	1,851.3	111.9	352.1	367.9	0.00	0.00	0.00	
2,000.0	15.61	77.92	1,947.6	117.6	378.4	394.8	0.00	0.00	0.00	
2,100.0	15.61	77.92	2,043.9	123.2	404.7	421.7	0.00	0.00	0.00	
2,143.7	15.61	77.92	2,086.0	125.7	416.2	433.5	0.00	0.00	0.00	
WASATCH.MBL										
2,200.0	15.61	77.92	2,140.2	128.8	431.0	448.6	0.00	0.00	0.00	
2,300.0	15.61	77.92	2,236.5	134.5	457.3	475.5	0.00	0.00	0.00	
2,400.0	15.61	77.92	2,332.8	140.1	483.6	502.5	0.00	0.00	0.00	
2,500.0	15.61	77.92	2,429.2	145.7	509.9	529.4	0.00	0.00	0.00	
2,573.6	15.61	77.92	2,500.0	149.9	529.3	549.1	0.00	0.00	0.00	
9 5/8"										
2,600.0	15.61	77.92	2,525.5	151.4	536.2	556.3	0.00	0.00	0.00	
2,700.0	15.61	77.92	2,621.8	157.0	562.5	583.2	0.00	0.00	0.00	
2,800.0	15.61	77.92	2,718.1	162.6	588.8	610.1	0.00	0.00	0.00	
2,900.0	15.61	77.92	2,814.4	168.2	615.1	637.0	0.00	0.00	0.00	
3,000.0	15.61	77.92	2,910.7	173.9	641.5	663.9	0.00	0.00	0.00	
3,100.0	15.61	77.92	3,007.0	179.5	667.8	690.8	0.00	0.00	0.00	
3,200.0	15.61	77.92	3,103.3	185.1	694.1	717.7	0.00	0.00	0.00	
3,300.0	15.61	77.92	3,199.7	190.8	720.4	744.6	0.00	0.00	0.00	
3,400.0	15.61	77.92	3,296.0	196.4	746.7	771.5	0.00	0.00	0.00	
3,500.0	15.61	77.92	3,392.3	202.0	773.0	798.4	0.00	0.00	0.00	
3,600.0	15.61	77.92	3,488.6	207.6	799.3	825.3	0.00	0.00	0.00	
3,700.0	15.61	77.92	3,584.9	213.3	825.6	852.2	0.00	0.00	0.00	
3,800.0	15.61	77.92	3,681.2	218.9	851.9	879.1	0.00	0.00	0.00	
3,900.0	15.61	77.92	3,777.5	224.5	878.2	906.0	0.00	0.00	0.00	
4,000.0	15.61	77.92	3,873.8	230.2	904.5	932.9	0.00	0.00	0.00	
4,100.0	15.61	77.92	3,970.2	235.8	930.9	959.8	0.00	0.00	0.00	
4,200.0	15.61	77.92	4,066.5	241.4	957.2	986.7	0.00	0.00	0.00	
4,300.0	15.61	77.92	4,162.8	247.1	983.5	1,013.6	0.00	0.00	0.00	

Database:	US_EDM	Local Co-ordinate Reference:	Well NPR 22A-9 596
Company:	Caerus Oil and Gas LLC	TVD Reference:	WELL @ 7670.0ft (Original Well Elev)
Project:	SEC.9-T5S-R96W	MD Reference:	WELL @ 7670.0ft (Original Well Elev)
Site:	NPR G09 596 Pad Sec.9-T5S-R96W	North Reference:	True
Well:	NPR 22A-9 596	Survey Calculation Method:	Minimum Curvature
Wellbore:	Wellbore #1		
Design:	Plan #2 (3-06-18)		

Planned Survey									
Measured Depth (ft)	Inclination (°)	Azimuth (°)	Vertical Depth (ft)	+N/-S (ft)	+E/-W (ft)	Vertical Section (ft)	Dogleg Rate (°/100usft)	Build Rate (°/100usft)	Turn Rate (°/100usft)
4,400.0	15.61	77.92	4,259.1	252.7	1,009.8	1,040.5	0.00	0.00	0.00
4,500.0	15.61	77.92	4,355.4	258.3	1,036.1	1,067.4	0.00	0.00	0.00
4,600.0	15.61	77.92	4,451.7	263.9	1,062.4	1,094.3	0.00	0.00	0.00
4,635.6	15.61	77.92	4,486.0	265.9	1,071.8	1,103.9	0.00	0.00	0.00
WASATCH_G_ZONE.MBL									
4,700.0	15.61	77.92	4,548.0	269.6	1,088.7	1,121.3	0.00	0.00	0.00
4,800.0	15.61	77.92	4,644.3	275.2	1,115.0	1,148.2	0.00	0.00	0.00
4,900.0	15.61	77.92	4,740.7	280.8	1,141.3	1,175.1	0.00	0.00	0.00
4,989.7	15.61	77.92	4,827.0	285.9	1,164.9	1,199.2	0.00	0.00	0.00
FORT_UNION.MBL									
5,000.0	15.61	77.92	4,837.0	286.5	1,167.6	1,202.0	0.00	0.00	0.00
5,100.0	15.61	77.92	4,933.3	292.1	1,194.0	1,228.9	0.00	0.00	0.00
5,200.0	15.61	77.92	5,029.6	297.7	1,220.3	1,255.8	0.00	0.00	0.00
5,300.0	15.61	77.92	5,125.9	303.4	1,246.6	1,282.7	0.00	0.00	0.00
5,400.0	15.61	77.92	5,222.2	309.0	1,272.9	1,309.6	0.00	0.00	0.00
5,500.0	15.61	77.92	5,318.5	314.6	1,299.2	1,336.5	0.00	0.00	0.00
5,600.0	15.61	77.92	5,414.8	320.2	1,325.5	1,363.4	0.00	0.00	0.00
5,700.0	15.61	77.92	5,511.2	325.9	1,351.8	1,390.3	0.00	0.00	0.00
5,800.0	15.61	77.92	5,607.5	331.5	1,378.1	1,417.2	0.00	0.00	0.00
5,900.0	15.61	77.92	5,703.8	337.1	1,404.4	1,444.1	0.00	0.00	0.00
6,000.0	15.61	77.92	5,800.1	342.8	1,430.7	1,471.0	0.00	0.00	0.00
6,100.0	15.61	77.92	5,896.4	348.4	1,457.0	1,497.9	0.00	0.00	0.00
6,200.0	15.61	77.92	5,992.7	354.0	1,483.4	1,524.8	0.00	0.00	0.00
6,300.0	15.61	77.92	6,089.0	359.6	1,509.7	1,551.7	0.00	0.00	0.00
6,400.0	15.61	77.92	6,185.3	365.3	1,536.0	1,578.6	0.00	0.00	0.00
6,500.0	15.61	77.92	6,281.7	370.9	1,562.3	1,605.5	0.00	0.00	0.00
6,534.8	15.61	77.92	6,315.2	372.9	1,571.4	1,614.9	0.00	0.00	0.00
6,600.0	13.65	77.92	6,378.3	376.3	1,587.5	1,631.4	3.00	-3.00	0.00
6,700.0	10.65	77.92	6,476.0	380.7	1,608.1	1,652.4	3.00	-3.00	0.00
6,800.0	7.65	77.92	6,574.7	384.0	1,623.7	1,668.3	3.00	-3.00	0.00
6,851.7	6.10	77.92	6,626.0	385.3	1,629.7	1,674.5	3.00	-3.00	0.00
OHIO_CREEK.MBL									
6,900.0	4.65	77.92	6,674.1	386.3	1,634.2	1,679.0	3.00	-3.00	0.00
7,000.0	1.65	77.92	6,774.0	387.4	1,639.5	1,684.5	3.00	-3.00	0.00
7,055.0	0.00	0.00	6,829.0	387.6	1,640.3	1,685.3	3.00	-3.00	0.00
7,100.0	0.45	250.00	6,874.0	387.5	1,640.1	1,685.1	1.00	1.00	0.00
7,105.0	0.50	250.00	6,879.0	387.5	1,640.1	1,685.1	1.00	1.00	0.00
WILLIAMS_FORK.MBL									
7,155.0	1.00	250.00	6,929.0	387.3	1,639.5	1,684.4	1.00	1.00	0.00
TOP_GAS.MBL									
7,200.0	1.45	250.00	6,973.9	387.0	1,638.6	1,683.5	1.00	1.00	0.00
7,300.0	2.45	250.00	7,073.9	385.8	1,635.4	1,680.1	1.00	1.00	0.00
7,381.0	3.26	250.00	7,154.8	384.4	1,631.6	1,676.1	1.00	1.00	0.00
7,400.0	3.26	250.00	7,173.8	384.1	1,630.6	1,675.0	0.00	0.00	0.00
7,500.0	3.26	250.00	7,273.6	382.1	1,625.2	1,669.4	0.00	0.00	0.00
7,600.0	3.26	250.00	7,373.4	380.2	1,619.9	1,663.8	0.00	0.00	0.00
7,700.0	3.26	250.00	7,473.3	378.2	1,614.5	1,658.1	0.00	0.00	0.00
7,800.0	3.26	250.00	7,573.1	376.3	1,609.2	1,652.5	0.00	0.00	0.00
7,900.0	3.26	250.00	7,672.9	374.3	1,603.9	1,646.9	0.00	0.00	0.00
8,000.0	3.26	250.00	7,772.8	372.4	1,598.5	1,641.2	0.00	0.00	0.00
8,100.0	3.26	250.00	7,872.6	370.4	1,593.2	1,635.6	0.00	0.00	0.00
8,200.0	3.26	250.00	7,972.5	368.5	1,587.8	1,629.9	0.00	0.00	0.00
8,300.0	3.26	250.00	8,072.3	366.6	1,582.5	1,624.3	0.00	0.00	0.00

Database:	US_EDM	Local Co-ordinate Reference:	Well NPR 22A-9 596
Company:	Caerus Oil and Gas LLC	TVD Reference:	WELL @ 7670.0ft (Original Well Elev)
Project:	SEC.9-T5S-R96W	MD Reference:	WELL @ 7670.0ft (Original Well Elev)
Site:	NPR G09 596 Pad Sec.9-T5S-R96W	North Reference:	True
Well:	NPR 22A-9 596	Survey Calculation Method:	Minimum Curvature
Wellbore:	Wellbore #1		
Design:	Plan #2 (3-06-18)		

Planned Survey									
Measured Depth (ft)	Inclination (°)	Azimuth (°)	Vertical Depth (ft)	+N/-S (ft)	+E/-W (ft)	Vertical Section (ft)	Dogleg Rate (°/100usft)	Build Rate (°/100usft)	Turn Rate (°/100usft)
8,400.0	3.26	250.00	8,172.1	364.6	1,577.1	1,618.7	0.00	0.00	0.00
8,500.0	3.26	250.00	8,272.0	362.7	1,571.8	1,613.0	0.00	0.00	0.00
8,600.0	3.26	250.00	8,371.8	360.7	1,566.4	1,607.4	0.00	0.00	0.00
8,700.0	3.26	250.00	8,471.7	358.8	1,561.1	1,601.8	0.00	0.00	0.00
8,800.0	3.26	250.00	8,571.5	356.8	1,555.8	1,596.1	0.00	0.00	0.00
8,900.0	3.26	250.00	8,671.3	354.9	1,550.4	1,590.5	0.00	0.00	0.00
9,000.0	3.26	250.00	8,771.2	352.9	1,545.1	1,584.8	0.00	0.00	0.00
9,100.0	3.26	250.00	8,871.0	351.0	1,539.7	1,579.2	0.00	0.00	0.00
9,200.0	3.26	250.00	8,970.8	349.1	1,534.4	1,573.6	0.00	0.00	0.00
9,300.0	3.26	250.00	9,070.7	347.1	1,529.0	1,567.9	0.00	0.00	0.00
9,400.0	3.26	250.00	9,170.5	345.2	1,523.7	1,562.3	0.00	0.00	0.00
9,500.0	3.26	250.00	9,270.4	343.2	1,518.4	1,556.7	0.00	0.00	0.00
9,562.7	3.26	250.00	9,333.0	342.0	1,515.0	1,553.1	0.00	0.00	0.00
CAMEO.MBL									
9,600.0	3.26	250.00	9,370.2	341.3	1,513.0	1,551.0	0.00	0.00	0.00
9,700.0	3.26	250.00	9,470.0	339.3	1,507.7	1,545.4	0.00	0.00	0.00
9,800.0	3.26	250.00	9,569.9	337.4	1,502.3	1,539.7	0.00	0.00	0.00
9,900.0	3.26	250.00	9,669.7	335.4	1,497.0	1,534.1	0.00	0.00	0.00
10,000.0	3.26	250.00	9,769.6	333.5	1,491.6	1,528.5	0.00	0.00	0.00
10,100.0	3.26	250.00	9,869.4	331.6	1,486.3	1,522.8	0.00	0.00	0.00
10,200.0	3.26	250.00	9,969.2	329.6	1,481.0	1,517.2	0.00	0.00	0.00
10,226.8	3.26	250.00	9,996.0	329.1	1,479.5	1,515.7	0.00	0.00	0.00
ROLLINS.MBL									
10,300.0	3.26	250.00	10,069.1	327.7	1,475.6	1,511.6	0.00	0.00	0.00
10,400.0	3.26	250.00	10,168.9	325.7	1,470.3	1,505.9	0.00	0.00	0.00
10,402.1	3.26	250.00	10,171.0	325.7	1,470.2	1,505.8	0.00	0.00	0.00
TD.MBL - BHL 1363'FNL, 1313'FEL, SEC.9									

Design Targets									
Target Name	Dip Angle (°)	Dip Dir. (°)	TVD (ft)	+N/-S (ft)	+E/-W (ft)	Northing (usft)	Easting (usft)	Latitude	Longitude
SHL 1690'FNL, 2496'FW - hit/miss target - Shape - Point	0.00	0.00	1.0	0.0	0.0	14,404,643.12	2,436,142.29	39.632201	-108.174034
WP #1 (NPR 22A-9 596) - plan hits target center - Point	0.00	0.00	1,628.6	97.9	291.1	14,404,750.17	2,436,430.30	39.632470	-108.173001
BHL 1363'FNL, 1313'FE - plan hits target center - Ellipse (radii L200.0 W100.0 on 250.0 azi)	0.00	0.00	10,171.0	325.7	1,470.2	14,405,015.03	2,437,601.93	39.633095	-108.168815

Casing Points				
Measured Depth (ft)	Vertical Depth (ft)	Name	Casing Diameter (")	Hole Diameter (")
2,573.6	2,500.0	9 5/8"	9-5/8	12-1/4

Database:	US_EDM	Local Co-ordinate Reference:	Well NPR 22A-9 596
Company:	Caerus Oil and Gas LLC	TVD Reference:	WELL @ 7670.0ft (Original Well Elev)
Project:	SEC.9-T5S-R96W	MD Reference:	WELL @ 7670.0ft (Original Well Elev)
Site:	NPR G09 596 Pad Sec.9-T5S-R96W	North Reference:	True
Well:	NPR 22A-9 596	Survey Calculation Method:	Minimum Curvature
Wellbore:	Wellbore #1		
Design:	Plan #2 (3-06-18)		

Formations						
Measured Depth (ft)	Vertical Depth (ft)	Name	Lithology	Dip (°)	Dip Direction (°)	
2,143.7	2,086.0	WASATCH.MBL		0.00		
4,635.6	4,486.0	WASATCH_G_ZONE.MBL		0.00		
4,989.7	4,827.0	FORT_UNION.MBL		0.00		
6,851.7	6,626.0	OHIO_CREEK.MBL		0.00		
7,105.0	6,879.0	WILLIAMS_FORK.MBL		0.00		
7,155.0	6,929.0	TOP_GAS.MBL		0.00		
9,562.7	9,333.0	CAMEO.MBL		0.00		
10,226.8	9,996.0	ROLLINS.MBL		0.00		
10,402.1	10,171.0	TD.MBL		0.00		