

T4S, R65W, 6th P.M.

ConocoPhillips Company

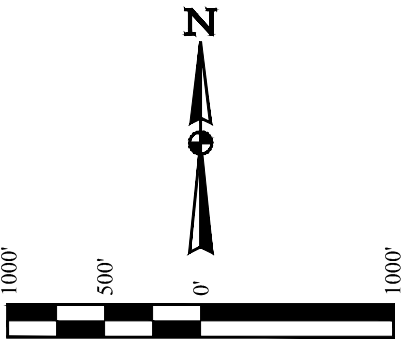
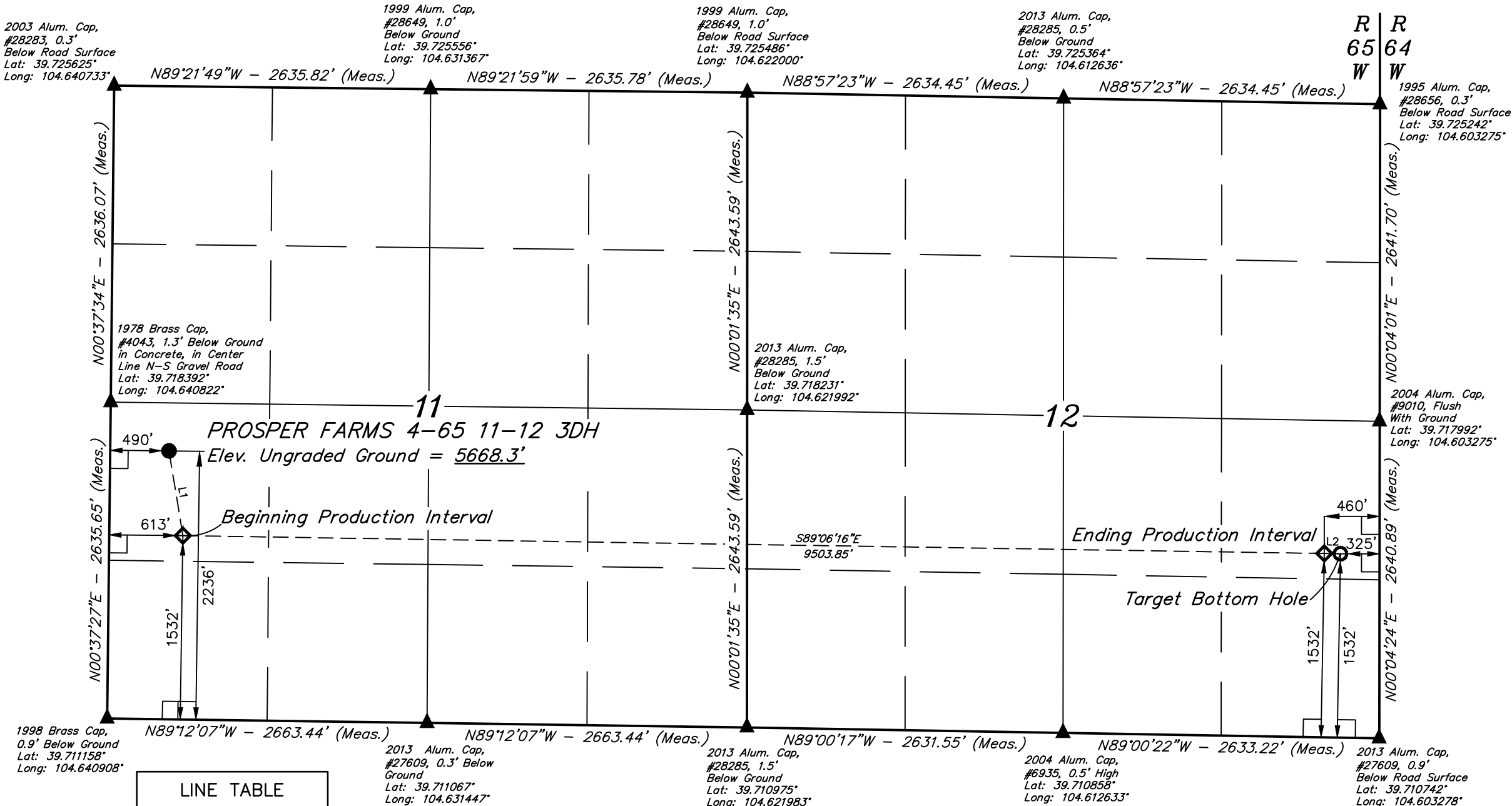
PROSPER FARMS 4-65 11-12 3DH  
NW 1/4 SW 1/4, SECTION 11, T4S, R65W, 6th P.M.  
ARAPAHOE COUNTY, COLORADO

BASIS OF BEARINGS

BASIS OF BEARINGS IS A G.P.S. OBSERVATION

BASIS OF ELEVATION

USGS COOPERATIVE BASE NETWORK CONTROL STATION,  
DESIGNATION "K 374". NGS DATA SHEET LISTS THE NAVD 88  
ELEVATION AS BEING 6054.61 FEET.



CERTIFICATE

THIS IS TO CERTIFY THAT THE ABOVE PLAT WAS PREPARED FROM FIELD NOTES OF ACTUAL SURVEYS MADE BY ME OR UNDER MY SUPERVISION AND THAT THE SAME ARE TRUE AND CORRECT TO THE BEST OF MY KNOWLEDGE AND BELIEF.

REGISTERED LAND SURVEYOR  
REGISTRATION NO. 28285  
STATE OF COLORADO  
JULY 15-18

PDOP = 1.5

REV: 2 02-15-18 T.S. (BPI CHANGES)

LEGEND:

- 90° SYMBOL
- PROPOSED WELLHEAD.
- PRODUCTION INTERVAL.
- TARGET BOTTOM HOLE.
- SECTION CORNERS LOCATED. (NAD 83)

NAD 83 (SURFACE LOCATION)	NAD 83 (BEG. PROD. INTERVAL)	NAD 83 (ENDING PROD. INTERVAL)	NAD 83 (TARGET BOTTOM HOLE)
LATITUDE = 39°43'02.20" (39.717278)	LATITUDE = 39°42'55.23" (39.715341)	LATITUDE = 39°42'53.89" (39.714969)	LATITUDE = 39°42'53.86" (39.714961)
LONGITUDE = 104°38'20.74" (104.639094)	LONGITUDE = 104°38'19.25" (104.638680)	LONGITUDE = 104°36'17.68" (104.604911)	LONGITUDE = 104°36'15.95" (104.604431)
NAD 27 (SURFACE LOCATION)	NAD 27 (BEG. PROD. INTERVAL)	NAD 27 (ENDING PROD. INTERVAL)	NAD 27 (TARGET BOTTOM HOLE)
LATITUDE = 39°43'02.25" (39.717292)	LATITUDE = 39°42'55.27" (39.715354)	LATITUDE = 39°42'53.93" (39.714981)	LATITUDE = 39°42'53.91" (39.714975)
LONGITUDE = 104°38'18.85" (104.638569)	LONGITUDE = 104°38'17.36" (104.638157)	LONGITUDE = 104°36'15.80" (104.604389)	LONGITUDE = 104°36'14.07" (104.603908)
STATE PLANE NAD 83 (CO. CEN.)	STATE PLANE NAD 83 (CO. CEN.)	STATE PLANE NAD 83 (CO. CEN.)	STATE PLANE NAD 83 (CO. CEN.)
N: 1687295.17 E: 3242180.64	N: 1686590.93 E: 3242303.66	N: 1686546.95 E: 3251804.65	N: 1686546.09 E: 3251939.63
STATE PLANE NAD 27 (CO. CEN.)	STATE PLANE NAD 27 (CO. CEN.)	STATE PLANE NAD 27 (CO. CEN.)	STATE PLANE NAD 27 (CO. CEN.)
N: 687287.55 E: 2242334.21	N: 686583.31 E: 2242457.24	N: 686539.48 E: 2251958.15	N: 686538.63 E: 2252093.13



UELS, LLC  
Corporate Office \* 85 South 200 East  
Vernal, UT 84078 \* (435) 789-1017

SURVEYED BY	DALLAS NIELSEN, C.M.	09-21-17	SCALE
DRAWN BY	J.J.	07-07-17	1" = 1000'

WELL LOCATION PLAT