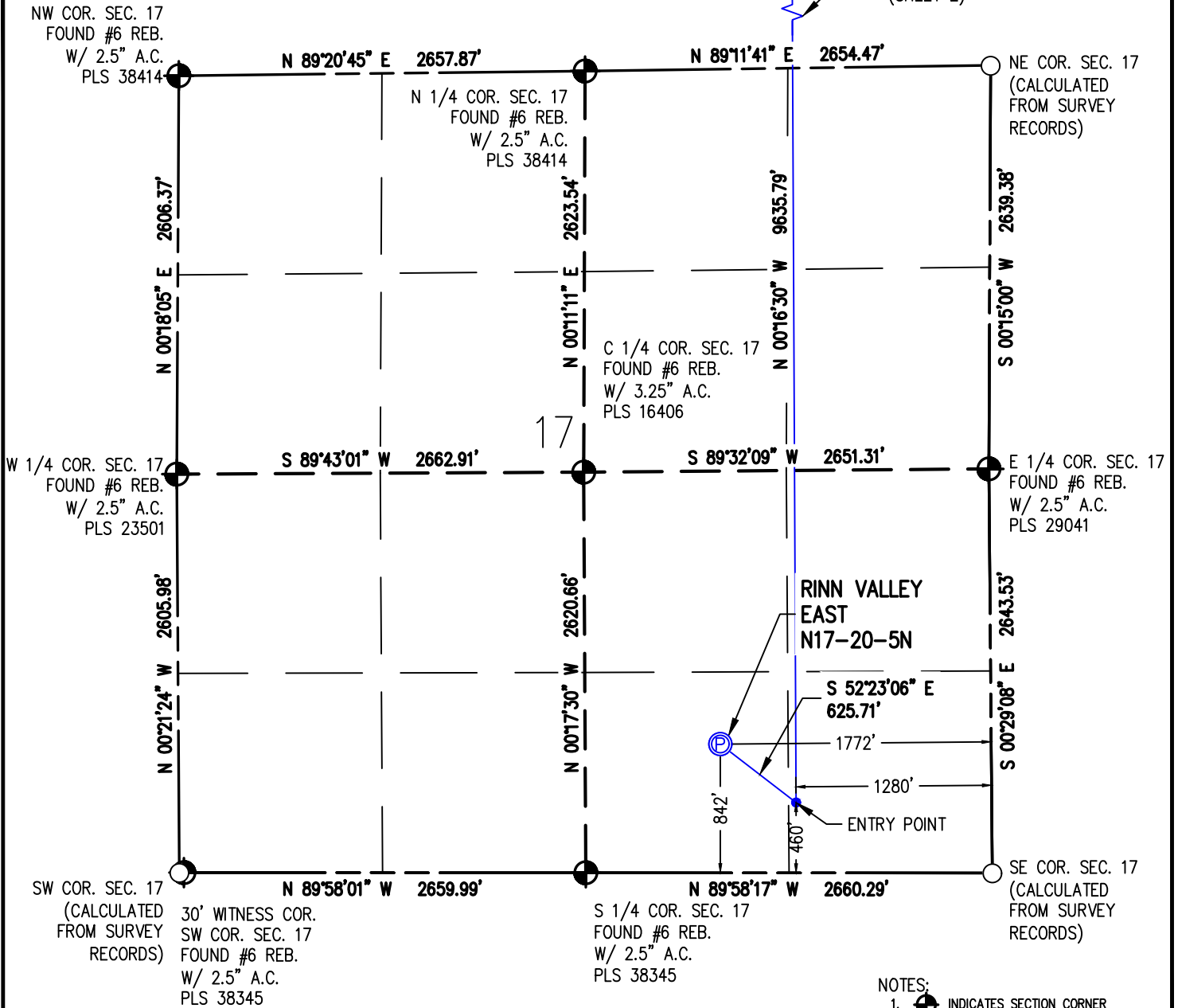


WELL LOCATION PLAT RINN VALLEY EAST N17-20-5N

SW1/4 SE1/4 SEC. 17, T2N, R68W, 6TH P.M.

WELL BORE
CONTINUES
INTO
SECTION 8
(SHEET 2)



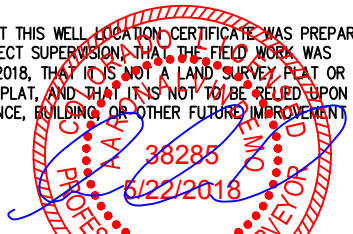
- NOTES:**
- INDICATES SECTION CORNER
 - INDICATES CALCULATED CORNER
 - (C) INDICATES CALCULATED DIMENSION
 - ELEVATION BASED ON NAVD88 (GEOID12B)
 - BEARINGS DERIVED FROM COLORADO COORDINATE SYSTEM OF 1983 NORTH ZONE.
 - OPERATOR: TRAVIS WINNICKI
 - IMPROVEMENTS: SEE LOCATION DRAWING FOR ALL VISIBLE IMPROVEMENTS WITHIN 500' OF DISTURBED AREA.
 - WELL FOOTAGES ARE MEASURED AT RIGHT ANGLES TO THE SECTION LINES.

SURFACE LOCATION
SEC. 17, T2N, R68W
GROUND ELEVATION = 4919.4'
PDOP = 1.2
LATITUDE = 40.133799°
LONGITUDE = -105.023988°
842' FSL, 1772' FEL

ENTRY POINT LOCATION
SEC. 17, T2N, R68W
LATITUDE = 40.132744°
LONGITUDE = -105.022223°
460' FSL, 1280' FEL

BOTTOM HOLE LOCATION
SEC. 8, T2N, R68W
LATITUDE = 40.159195°
LONGITUDE = -105.022203°
460' FNL, 1280' FEL

I HEREBY CERTIFY THAT THIS WELL LOCATION CERTIFICATE WAS PREPARED BY ME, OR UNDER MY DIRECT SUPERVISION, THAT THE FIELD WORK WAS COMPLETED ON 1/30/2018, THAT IT IS NOT A LAND SURVEY PLAT OR AN IMPROVEMENT SURVEY PLAT, AND THAT IT IS NOT TO BE RELED UPON FOR ESTABLISHMENT OF FENCE, BUILDING OR OTHER FUTURE IMPROVEMENT LINES.



Scale 1" = 1000' ft

AARON A. DEMO
Professional Land Surveyor Registration No. 38285
State of Colorado
FOR AND ON BEHALF OF BASELINE ENGINEERING CORP.

NEAREST CULTURAL ITEMS:

BUILDING: 551' SE
BUILDING UNIT: 551' SE
HIGH OCCUPANCY BUILDING UNIT: 5280'+
DESIGNATED OUTSIDE ACTIVITY AREA: 5280'+
PUBLIC ROAD: WELD COUNTY ROAD 20 1/2 1771' N
ABOVE GROUND UTILITY: 1758' N
RAILROAD: 5280'+
PROPERTY LINE: 220' SE
SURFACE USE: IRRIGATED CROP LAND.
NEAREST EXISTING WELL: SCHLAGEL 2 126' N



DRAWN BY	CHECKED BY
BGR	AAD
INITIAL SUBMITTAL	3/9/2018
REVISED	5/22/2018
DRAWING SIZE	8.5" X 11"
JOB NO.	EXT02N68W17-01
SHEET	1 OF 2

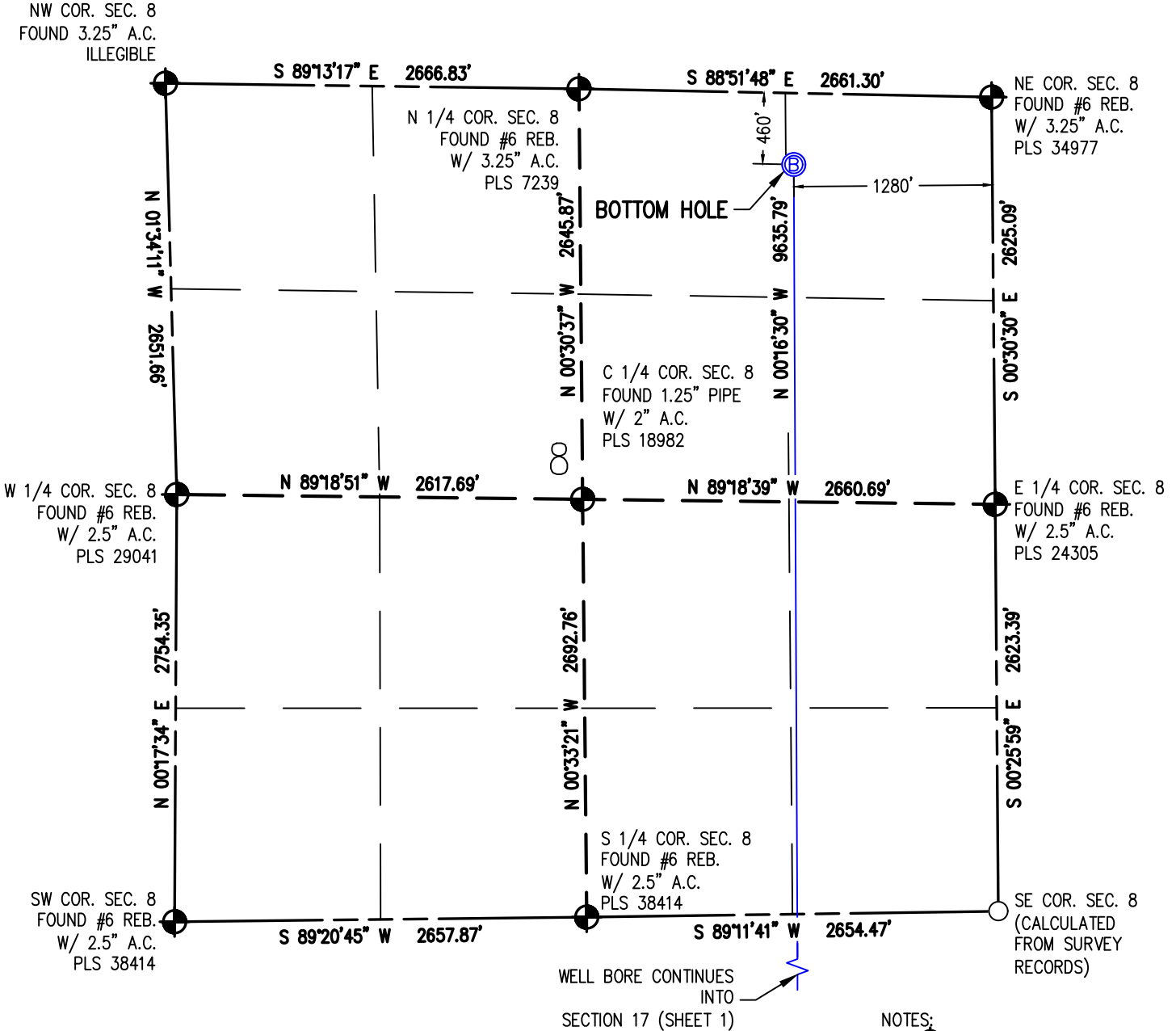
BASELINE
Engineering - Planning - Surveying

4007 S. LINCOLN AVENUE SUITE 405 - LOVELAND, COLORADO 80537
P: 970.353.7600 - F: 970.353.7601 - www.baselinecorp.com

M:_co - Well Head Staking\EXT02N68W17-01 (RINN VALLEY)\Drawings\EXT02N68W17-01 - 2 EAST.dwg, 5/22/2018 12:02:17 PM, Danny Miller

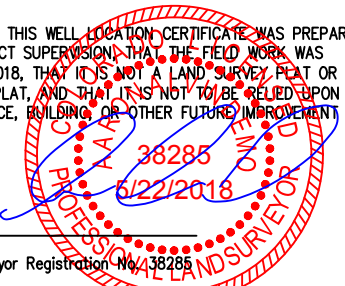
WELL LOCATION PLAT RINN VALLEY EAST N17-20-5N

SW1/4 SE1/4 SEC. 17, T2N, R68W, 6TH P.M.

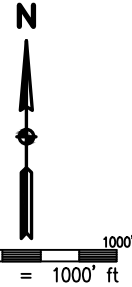


- NOTES:**
- INDICATES SECTION CORNER
 - INDICATES CALCULATED CORNER
 - (C) INDICATES CALCULATED DIMENSION
 - ELEVATION BASED ON NAVD88 (GEOID12B)
 - BEARINGS DERIVED FROM COLORADO COORDINATE SYSTEM OF 1983 NORTH ZONE.
 - OPERATOR: TRAVIS WINNICKI
 - IMPROVEMENTS: SEE LOCATION DRAWING FOR ALL VISIBLE IMPROVEMENTS WITHIN 500' OF DISTURBED AREA.
 - WELL FOOTAGES ARE MEASURED AT RIGHT ANGLES TO THE SECTION LINES.

I HEREBY CERTIFY THAT THIS WELL LOCATION CERTIFICATE WAS PREPARED BY ME, OR UNDER MY DIRECT SUPERVISION, THAT THE FIELD WORK WAS COMPLETED ON 1/30/2018, THAT IT IS NOT A LAND SURVEY PLAT OR AN IMPROVEMENT SURVEY PLAT, AND THAT IT IS NOT TO BE RELIED UPON FOR ESTABLISHMENT OF FENCE, BUILDING OR OTHER FUTURE IMPROVEMENT LINES.



AARON A. DEMO
Professional Land Surveyor Registration No. 38285
State of Colorado
FOR AND ON BEHALF OF BASELINE ENGINEERING CORP.



SURFACE LOCATION
SEC. 17, T2N, R68W
GROUND ELEVATION = 4919.4'
PDOP = 1.2
LATITUDE = 40.133799°
LONGITUDE = -105.023988°
842' FSL, 1772' FEL
ENTRY POINT LOCATION
SEC. 17, T2N, R68W
LATITUDE = 40.132744°
LONGITUDE = -105.022223°
460' FSL, 1280' FEL
BOTTOM HOLE LOCATION
SEC. 8, T2N, R68W
LATITUDE = 40.159195°
LONGITUDE = -105.022203°
460' FNL, 1280' FEL

NEAREST CULTURAL ITEMS:
BUILDING: 551' SE
BUILDING UNIT: 551' SE
HIGH OCCUPANCY BUILDING UNIT: 5280'+
DESIGNATED OUTSIDE ACTIVITY AREA: 5280'+
PUBLIC ROAD: WELD COUNTY ROAD 20 1/2 1771' N
ABOVE GROUND UTILITY: 1758' N
RAILROAD: 5280'+
PROPERTY LINE: 220' SE
SURFACE USE: IRRIGATED CROP LAND.
NEAREST EXISTING WELL: SCHLAGEL 2 126' N



DRAWN BY	CHECKED BY
BGR	AAD
INITIAL SUBMITTAL	3/9/2018
REVISED	5/22/2018
DRAWING SIZE	8.5" X 11"
JOB NO.	EXT02N68W17-01
SHEET	2 OF 2

BASELINE
Engineering - Planning - Surveying
4007 S. LINCOLN AVENUE, SUITE 405 - LOVELAND, COLORADO 80537
P: 970.353.7600 • F: 970.353.7601 • www.baselinecorp.com

M:_co - Well Head Staking\EXT02N68W17-01 (RINN VALLEY)\Drawings\EXT02N68W17-01 - 2 EAST.dwg, 5/22/2018 12:02:22 PM, Danny Miller