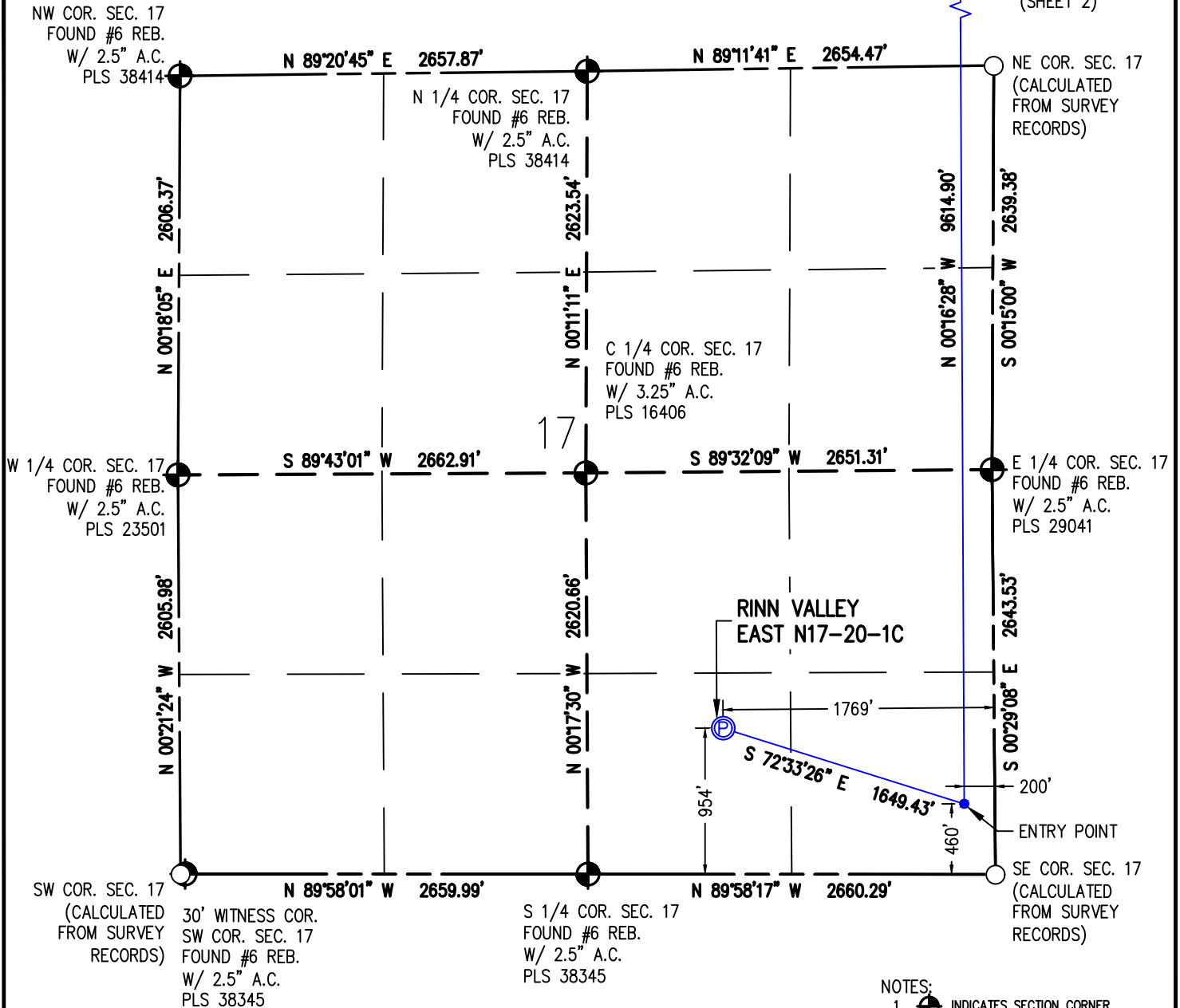


# WELL LOCATION PLAT RINN VALLEY EAST N17-20-1C

SW 1/4 SE 1/4 SEC. 17, T2N, R68W, 6TH P.M.

WELL BORE  
CONTINUES INTO  
SECTION 8  
(SHEET 2)



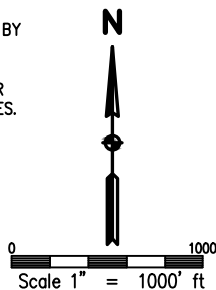
## NOTES:

1. INDICATES SECTION CORNER
2. INDICATES CALCULATED CORNER
3. (C) INDICATES CALCULATED DIMENSION
4. ELEVATION BASED ON NAVD88 (GEOID12B)
5. BEARINGS DERIVED FROM COLORADO COORDINATE SYSTEM OF 1983 NORTH ZONE.
6. OPERATOR: TRAVIS WINNICKI
7. IMPROVEMENTS: SEE LOCATION DRAWING FOR ALL VISIBLE IMPROVEMENTS WITHIN 500' OF DISTURBED AREA.
8. WELL FOOTAGES ARE MEASURED AT RIGHT ANGLES TO THE SECTION LINES.

SURFACE LOCATION  
SEC. 17, T2N, R68W  
GROUND ELEVATION = 4914.9'  
PDOP = 1.2  
LATITUDE = 40.134107°  
LONGITUDE = -105.023979°  
954' FSL, 1769' FEL  
ENTRY POINT LOCATION  
SEC. 17, T2N, R68W  
LATITUDE = 40.132726°  
LONGITUDE = -105.018360°  
460' FSL, 200' FEL  
BOTTOM HOLE LOCATION  
SEC. 8, T2N, R68W  
LATITUDE = 40.159120°  
LONGITUDE = -105.018338°  
460' FNL, 200' FEL

I HEREBY CERTIFY THAT THIS WELL LOCATION CERTIFICATE WAS PREPARED BY ME, OR UNDER MY DIRECT SUPERVISION, THAT THE FIELD WORK WAS COMPLETED ON 1/30/2018, THAT IT IS NOT A LAND SURVEY PLAT OR AN IMPROVEMENT SURVEY PLAT, AND THAT IT IS NOT TO BE RELED UPON FOR ESTABLISHMENT OF FENCE, BUILDING OR OTHER FUTURE IMPROVEMENT LINES.

AARON A. DEMO  
Professional Land Surveyor Registration No. 38285  
State of Colorado  
FOR AND ON BEHALF OF BASELINE ENGINEERING CORP.

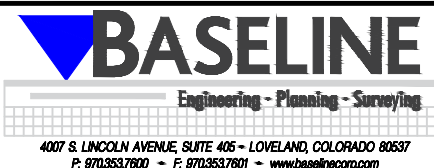


## NEAREST CULTURAL ITEMS:

BUILDING: 605' SE  
BUILDING UNIT: 605' SE  
HIGH OCCUPANCY BUILDING UNIT: 5280'+  
DESIGNATED OUTSIDE ACTIVITY AREA: 5280'+  
PUBLIC ROAD: WELD COUNTY ROAD 20 1/2 1659' N  
ABOVE GROUND UTILITY: 1646' N  
RAILROAD: 5280'+  
PROPERTY LINE: 176' N  
SURFACE USE: IRRIGATED CROP LAND.  
NEAREST EXISTING WELL: SCHLAGEL 2.35' E



DRAWN BY	BGR	CHECKED BY	AAD
INITIAL SUBMITTAL	3/9/2018		
REVISED	5/22/2018		
DRAWING SIZE	8.5" X 11"		
JOB NO.	EXT02N68W17-01		
SHEET	1 OF 2		



# WELL LOCATION PLAT RINN VALLEY EAST N17-20-1C

SW1/4 SE1/4 SEC. 17, T2N, R68W, 6TH P.M.

NW COR. SEC. 8  
FOUND 3.25" A.C.  
ILLEGIBLE

NE COR. SEC. 8  
FOUND #6 REB.  
W/ 3.25" A.C.  
PLS 34977

N 1/4 COR. SEC. 8  
FOUND #6 REB.  
W/ 3.25" A.C.  
PLS 7239

C 1/4 COR. SEC. 8  
FOUND 1.25" PIPE  
W/ 2" A.C.  
PLS 18982

W 1/4 COR. SEC. 8  
FOUND #6 REB.  
W/ 2.5" A.C.  
PLS 29041

E 1/4 COR. SEC. 8  
FOUND #6 REB.  
W/ 2.5" A.C.  
PLS 24305

SW COR. SEC. 8  
FOUND #6 REB.  
W/ 2.5" A.C.  
PLS 38414

S 1/4 COR. SEC. 8  
FOUND #6 REB.  
W/ 2.5" A.C.  
PLS 38414

WELL BORE  
CONTINUES INTO  
SECTION 17 (SHEET 1)

SE COR. SEC. 8  
(CALCULATED  
FROM SURVEY  
RECORDS)

I HEREBY CERTIFY THAT THIS WELL LOCATION CERTIFICATE WAS PREPARED BY ME, OR UNDER MY DIRECT SUPERVISION, THAT THE FIELD WORK WAS COMPLETED ON 1/30/2018, THAT IT IS NOT A LAND SURVEY PLAT OR AN IMPROVEMENT SURVEY PLAT, AND THAT IT IS NOT TO BE RELED UPON FOR ESTABLISHMENT OF FENCE, BUILDING OR OTHER FUTURE IMPROVEMENT LINES.

AARON A. DEMO  
Professional Land Surveyor Registration No. 38285  
State of Colorado  
FOR AND ON BEHALF OF BASELINE ENGINEERING CORP.

N

0 1000'  
Scale 1" = 1000' ft



SURFACE LOCATION  
SEC. 17, T2N, R68W  
GROUND ELEVATION = 4914.9'  
PDOP = 1.2

LATITUDE = 40.134107°  
LONGITUDE = -105.023979°  
954' FSL, 1769' FEL

ENTRY POINT LOCATION  
SEC. 17, T2N, R68W  
LATITUDE = 40.132726°  
LONGITUDE = -105.018360°  
460' FSL, 200' FEL

BOTTOM HOLE LOCATION  
SEC. 8, T2N, R68W  
LATITUDE = 40.159120°  
LONGITUDE = -105.018338°  
460' FNL, 200' FEL

## NOTES:

1.  INDICATES SECTION CORNER
2.  INDICATES CALCULATED CORNER
3. (C) INDICATES CALCULATED DIMENSION
4. ELEVATION BASED ON NAVD88 (GEOID12B)
5. BEARINGS DERIVED FROM COLORADO COORDINATE SYSTEM OF 1983 NORTH ZONE.
6. OPERATOR: TRAVIS WINNICKI
7. IMPROVEMENTS: SEE LOCATION DRAWING FOR ALL VISIBLE IMPROVEMENTS WITHIN 500' OF DISTURBED AREA.
8. WELL FOOTAGES ARE MEASURED AT RIGHT ANGLES TO THE SECTION LINES.

## NEAREST CULTURAL ITEMS:

BUILDING: 605' SE  
BUILDING UNIT: 605' SE  
HIGH OCCUPANCY BUILDING UNIT: 5280'+  
DESIGNATED OUTSIDE ACTIVITY AREA: 5280'+  
PUBLIC ROAD: WELD COUNTY ROAD 20 1/2 1659' N  
ABOVE GROUND UTILITY: 1646' N  
RAILROAD: 5280'+  
PROPERTY LINE: 176' N  
SURFACE USE: IRRIGATED CROP LAND.  
NEAREST EXISTING WELL: SCHLAGEL 2.35' E



DRAWN BY	BGR	CHECKED BY	AAD
INITIAL SUBMITTAL	3/9/2018		
REVISED	5/22/2018		
DRAWING SIZE	8.5" X 11"		
JOB NO.	EXT02N68W17-01		
SHEET	2 OF 2		

