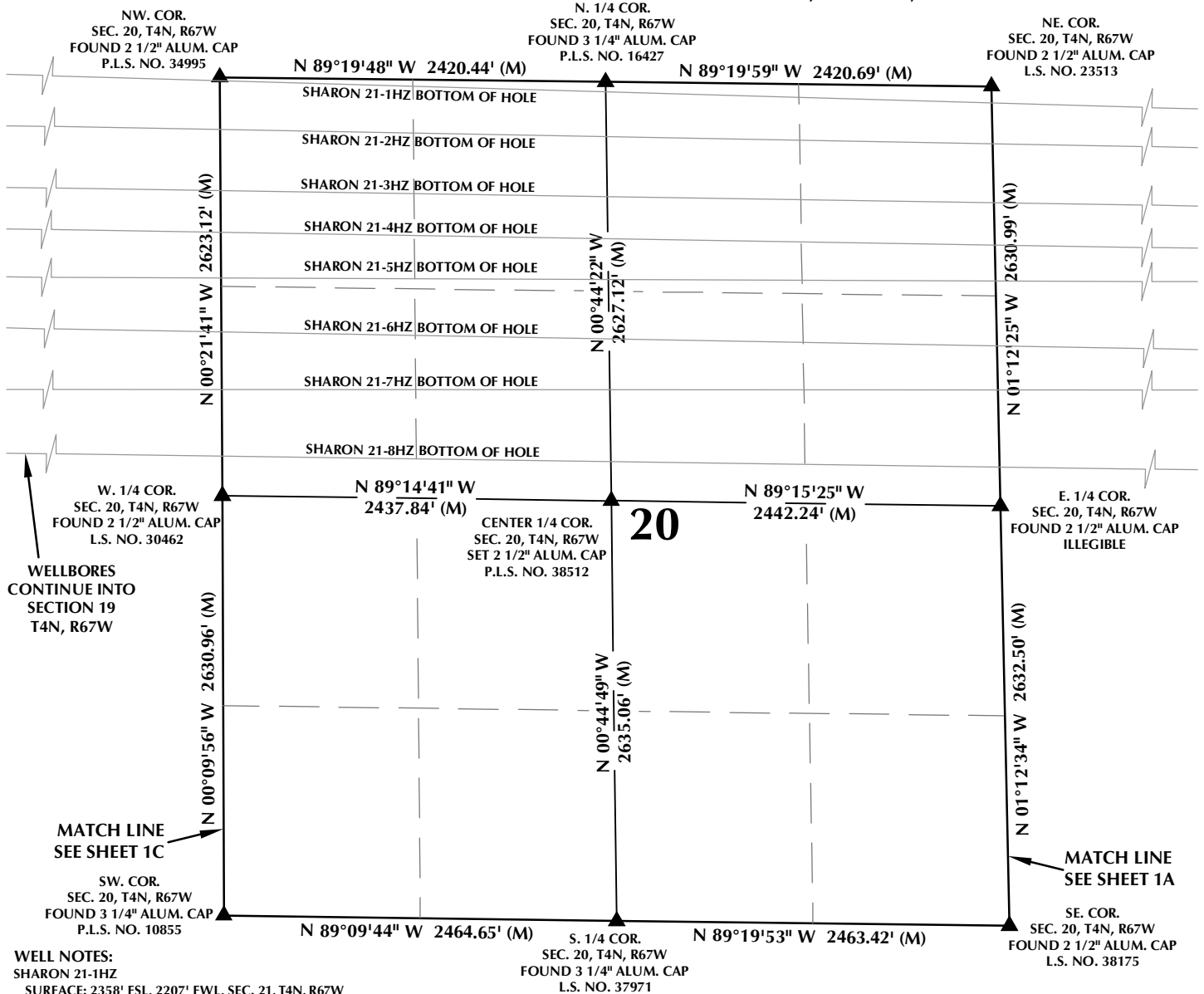


C:\ANADARKO\2017\2017_235_SHARON & WALTER_T4N_R67W_SEC_21\PLATS\SHARON\SHARON 11-21HZ MW.dwg, 3/21/2018 4:01:14 PM, ethan

MULTI-WELL PLAN SECTION 20, T4N, R67W



WELL NOTES:

SHARON 21-1HZ
 SURFACE: 2358' FSL, 2207' FWL, SEC. 21, T4N, R67W
 BOTTOM HOLE: 59' FNL, 2561' FEL, SEC. 19, T4N, R67W
 SHARON 21-2HZ
 SURFACE: 2343' FSL, 2207' FWL, SEC. 21, T4N, R67W
 BOTTOM HOLE: 392' FNL, 2561' FEL, SEC. 19, T4N, R67W
 SHARON 21-3HZ
 SURFACE: 2328' FSL, 2206' FWL, SEC. 21, T4N, R67W
 BOTTOM HOLE: 782' FNL, 2561' FEL, SEC. 19, T4N, R67W
 SHARON 21-4HZ
 SURFACE: 2313' FSL, 2206' FWL, SEC. 21, T4N, R67W
 BOTTOM HOLE: 1042' FNL, 2560' FEL, SEC. 19, T4N, R67W
 SHARON 21-5HZ
 SURFACE: 2298' FSL, 2206' FWL, SEC. 21, T4N, R67W
 BOTTOM HOLE: 1351' FNL, 2390' FEL, SEC. 19, T4N, R67W
 SHARON 21-6HZ
 SURFACE: 2283' FSL, 2205' FWL, SEC. 21, T4N, R67W
 BOTTOM HOLE: 1660' FNL, 2561' FEL, SEC. 19, T4N, R67W
 SHARON 21-7HZ
 SURFACE: 2268' FSL, 2205' FWL, SEC. 21, T4N, R67W
 BOTTOM HOLE: 2068' FNL, 2561' FEL, SEC. 19, T4N, R67W
 SHARON 21-8HZ
 SURFACE: 2253' FSL, 2205' FWL, SEC. 21, T4N, R67W
 BOTTOM HOLE: 2446' FNL, 2440' FEL, SEC. 19, T4N, R67W

NOTES:

- ▲ INDICATES SECTION CORNER.
- INDICATES CALCULATED CORNER.
- BASIS OF BEARING DERIVED FROM COLORADO COORDINATE SYSTEM OF 1983 NORTH ZONE.
- ALL MEASURED DISTANCES ARE GRID.
- COMBINED SCALE FACTOR: .99972673 CALCULATED FROM THE CENTER 1/4 CORNER OF SECTION 20, T4N, R67W.
- WELL FOOTAGES ARE MEASURED AT RIGHT ANGLES TO THE SECTION LINES.

WELL PAD - SHARON 11-21HZ

MULTI-WELL PLAN
 SHARON 21-1HZ, SHARON 21-2HZ, SHARON 21-3HZ,
 SHARON 21-4HZ, SHARON 21-5HZ, SHARON 21-6HZ,
 SHARON 21-7HZ & SHARON 21-8HZ
 LOCATED IN SECTIONS 19, 20 & 21
 T4N, R67W, 6TH P.M.
 WELD COUNTY, COLORADO

**Kerr-McGee Oil &
 Gas Onshore L.P.**
 1099 18th Street
 Denver, Colorado 80202



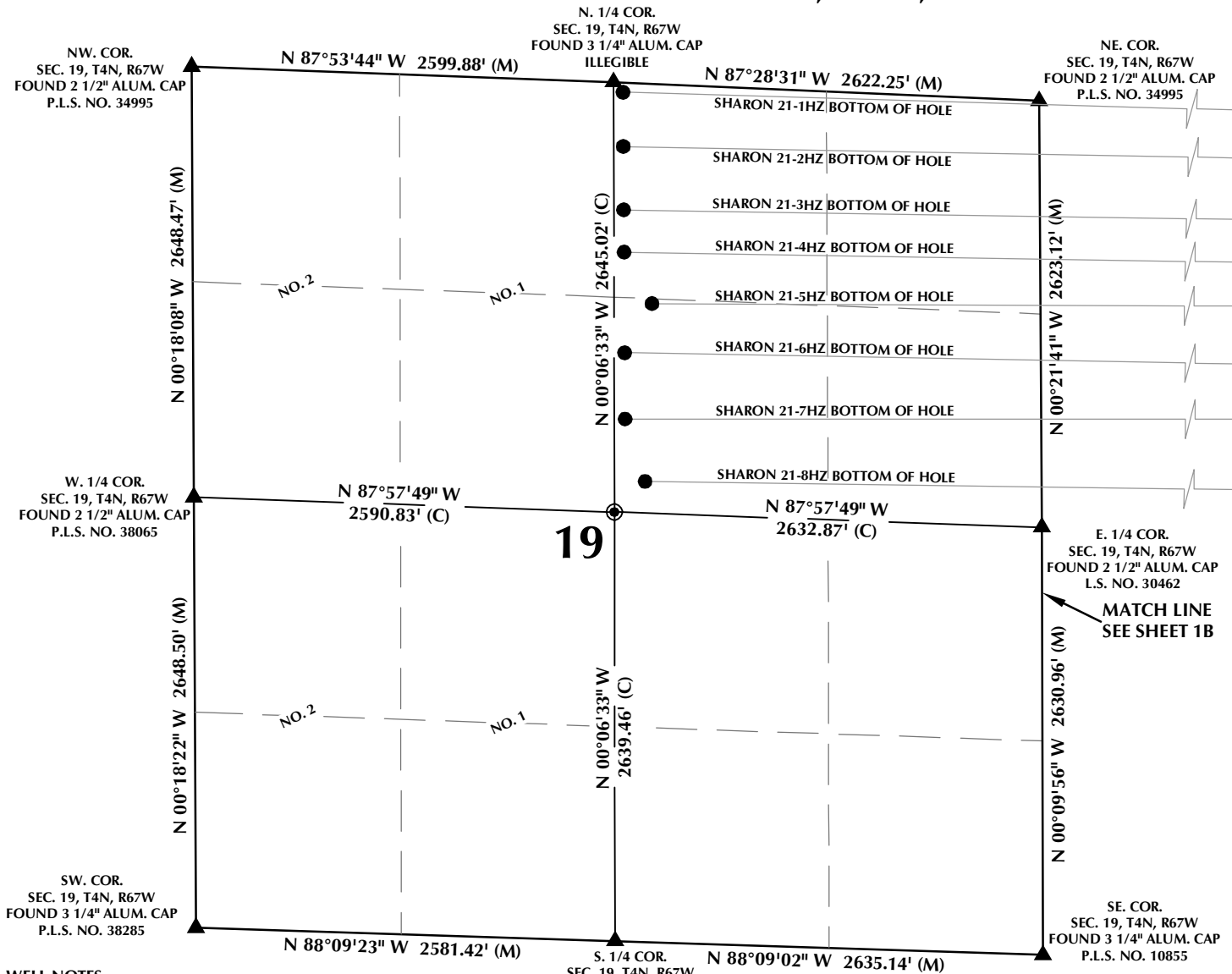
CONSULTING, LLC

SHERIDAN OFFICE
 1095 Saberton Avenue
 Sheridan, Wyoming 82801
 Phone 307-674-0609

LOVELAND OFFICE
 1635 Foxtrail Drive, Suite 204
 Loveland, Colorado 80538
 Phone 970-776-4331

DRAFTED BY:	LMO	CHECKED BY:	RKF	SHEET NO:
DATE DRAFTED:	3/22/18	DATE SURVEYED:	3/1/18	1B
REVISED:		FILE NAME:	17-235	1B OF 1

MULTI-WELL PLAN SECTION 19, T4N, R67W



WELL NOTES:

SHARON 21-1HZ
SURFACE: 2358' FSL, 2207' FWL, SEC. 21, T4N, R67W
BOTTOM HOLE: 59' FNL, 2561' FEL, SEC. 19, T4N, R67W

SHARON 21-2HZ
SURFACE: 2343' FSL, 2207' FWL, SEC. 21, T4N, R67W
BOTTOM HOLE: 392' FNL, 2561' FEL, SEC. 19, T4N, R67W

SHARON 21-3HZ
SURFACE: 2328' FSL, 2206' FWL, SEC. 21, T4N, R67W
BOTTOM HOLE: 782' FNL, 2561' FEL, SEC. 19, T4N, R67W

SHARON 21-4HZ
SURFACE: 2313' FSL, 2206' FWL, SEC. 21, T4N, R67W
BOTTOM HOLE: 1042' FNL, 2560' FEL, SEC. 19, T4N, R67W

SHARON 21-5HZ
SURFACE: 2298' FSL, 2206' FWL, SEC. 21, T4N, R67W
BOTTOM HOLE: 1351' FNL, 2390' FEL, SEC. 19, T4N, R67W

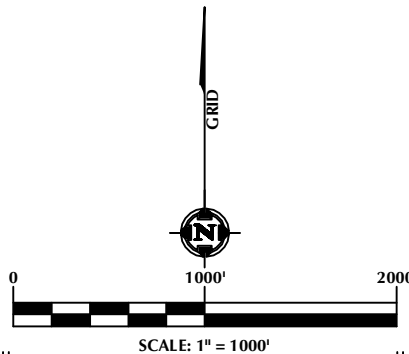
SHARON 21-6HZ
SURFACE: 2283' FSL, 2205' FWL, SEC. 21, T4N, R67W
BOTTOM HOLE: 1660' FNL, 2561' FEL, SEC. 19, T4N, R67W

SHARON 21-7HZ
SURFACE: 2268' FSL, 2205' FWL, SEC. 21, T4N, R67W
BOTTOM HOLE: 2068' FNL, 2561' FEL, SEC. 19, T4N, R67W

SHARON 21-8HZ
SURFACE: 2253' FSL, 2205' FWL, SEC. 21, T4N, R67W
BOTTOM HOLE: 2446' FNL, 2440' FEL, SEC. 19, T4N, R67W

NOTES:

- ▲ INDICATES SECTION CORNER.
- INDICATES CALCULATED CORNER.
- BASIS OF BEARING DERIVED FROM COLORADO COORDINATE SYSTEM OF 1983 NORTH ZONE.
- ALL MEASURED DISTANCES ARE GRID.
- COMBINED SCALE FACTOR: .99972673 CALCULATED FROM THE CENTER 1/4 CORNER OF SECTION 20, T4N, R67W.
- WELL FOOTAGES ARE MEASURED AT RIGHT ANGLES TO THE SECTION LINES.
- NO. 1 & NO. 2 AS SHOWN HEREON ARE GOVERNMENT LOTS 1 & 2 PER THE ORIGINAL GLO SURVEY.



WELL PAD - SHARON 11-21HZ

MULTI-WELL PLAN
SHARON 21-1HZ, SHARON 21-2HZ, SHARON 21-3HZ,
SHARON 21-4HZ, SHARON 21-5HZ, SHARON 21-6HZ,
SHARON 21-7HZ & SHARON 21-8HZ
LOCATED IN SECTIONS 19, 20 & 21
T4N, R67W, 6TH P.M.
WELD COUNTY, COLORADO

**Kerr-McGee Oil &
Gas Onshore L.P.**
1099 18th Street
Denver, Colorado 80202



CONSULTING, LLC

SHERIDAN OFFICE
1095 Saberton Avenue
Sheridan, Wyoming 82801
Phone 307-674-0609

LOVELAND OFFICE
1635 Foxtrail Drive, Suite 204
Loveland, Colorado 80538
Phone 970-776-4331

DRAFTED BY:	LMO	CHECKED BY:	RKF	SHEET NO:
DATE DRAFTED:	3/22/18	DATE SURVEYED:	3/1/18	1C
REVISED:		FILE NAME:	17-235	1C OF 1