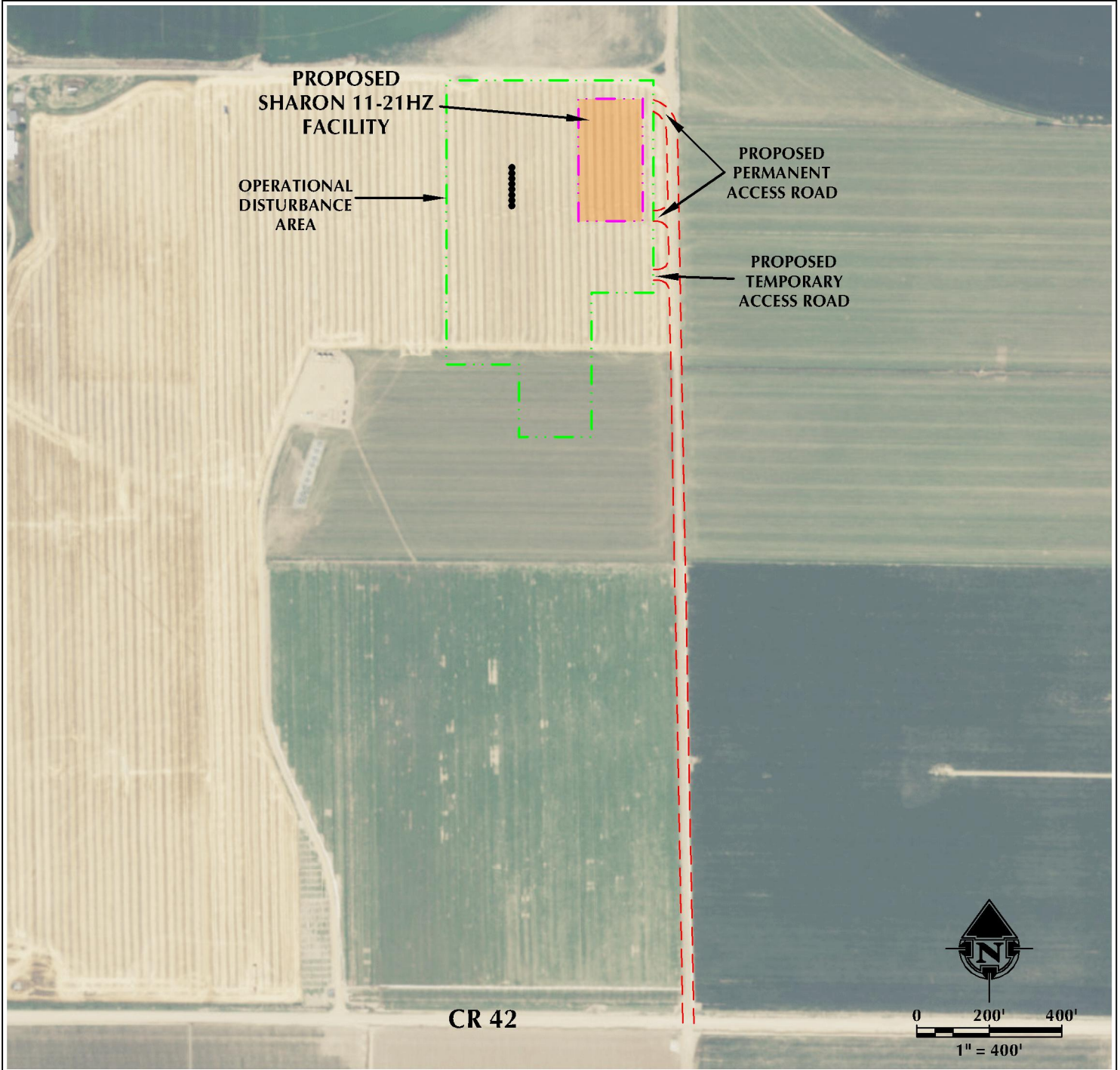


SHARON 11-21HZ ACCESS MAP

NE1/4 SW1/4 SECTION 21, TOWNSHIP 4 NORTH, RANGE 67 WEST, 6TH P.M.



LEGEND

- PROPOSED WELL
- ACCESS
- PROPOSED FACILITY
- DISTURBANCE BOUNDARY



609 CONSULTING, LLC
 LOVELAND OFFICE
 1635 Foxgill Drive, Suite 204
 Loveland, Colorado 80538
 Phone: 970-776-4331

SHERIDAN OFFICE
 1095 Saberton Avenue
 Sheridan, Wyoming 82801
 Phone: 307-674-0609

DATE SURVEYED: 3/1/18
 DATE: 3/22/18
 DRAFTER: DD
 REVISED:

DATA SOURCES:
 - AERIAL COURTESY OF ESRI, INC.

PREPARED FOR:
Kerr-McGee Oil & Gas Onshore L.P.