



Kerr-McGee Oil & Gas Onshore LP

A subsidiary of Anadarko Petroleum Corporation

1099 18th Street
Denver, CO 80202
720-929-6000

May 15, 2018

Julie Murphy
Director, Colorado Oil and Gas Conservation Commission
Department of Natural Resources
The Chancery Building
1120 Lincoln Street, Suite 801
Denver, CO 80203

Re: **30 Day Certification Letter - 318A.e**

Sharon 21-5HZ (Doc # 401624427)

Township 4 North, Range 67 West

Section 21: NESW

Unit Acreage: 800

Proposed Spacing Unit:

SEC 19:NE, E2NW;

SEC 20:N2;

SEC 21:NW, W2NE

Weld County, Colorado

Dear Director Murphy:

Kerr-McGee Oil and Gas Onshore LP ("KMG") hereby certifies that a thirty (30) day notice was sent to 7 mineral owners by certified mail. We have not received any objections to such well location, proposed spacing unit, or additional producing formation from the delivered 4 Notices. The undeliverable notices have a combined working interest of 0.0501067%. KMG hereby respectfully requests approval of this well.

If you have any questions or issues regarding this permit, please contact John Piekara at (720) 929-3094.

Sincerely,

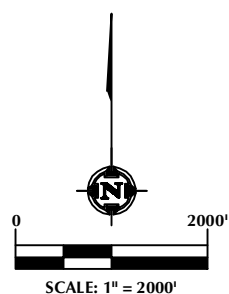
KERR-McGEE OIL AND GAS ONSHORE LP

A handwritten signature in black ink, appearing to read 'John Piekara'.

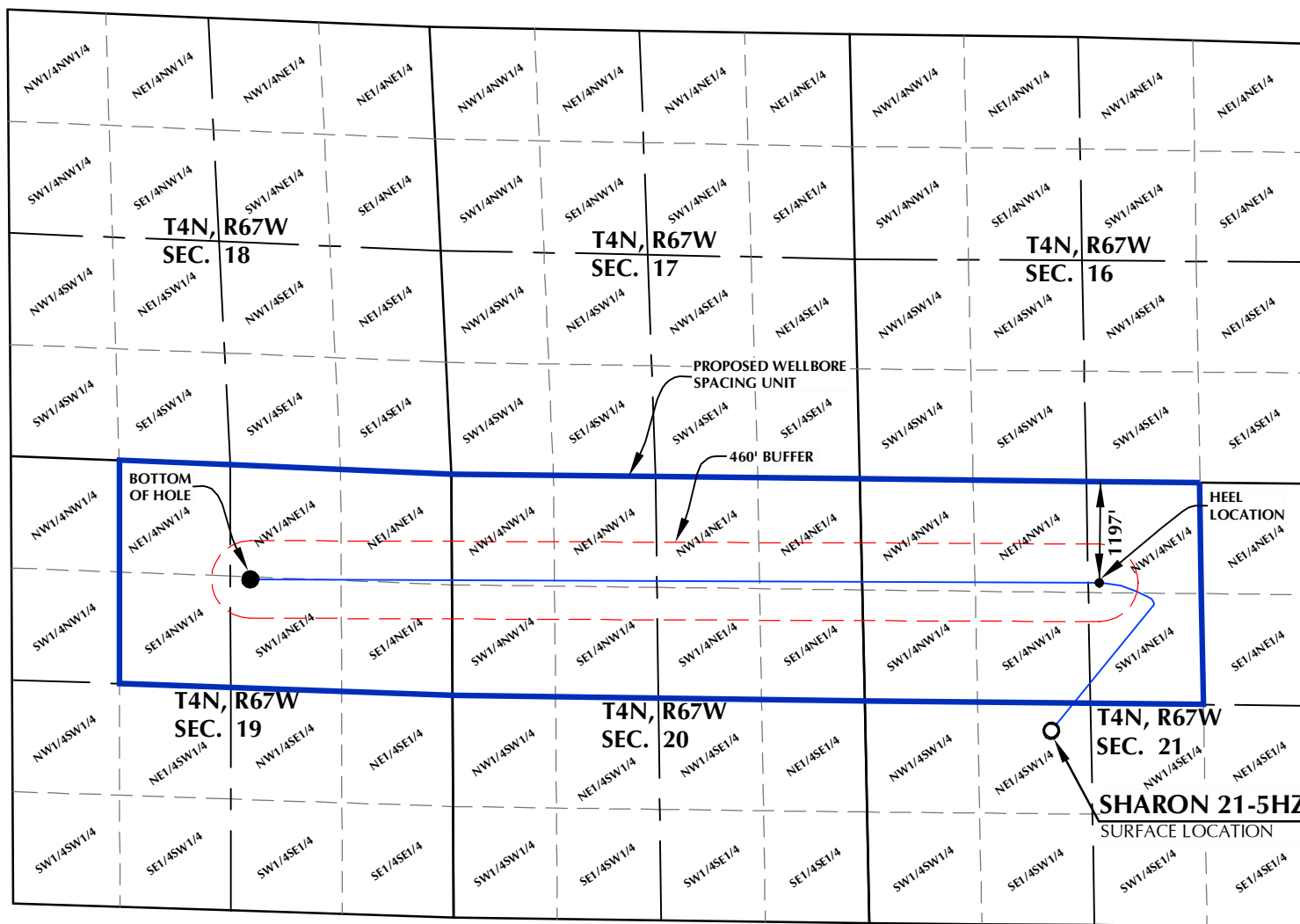
John Piekara
Senior Regulatory Analyst

DISTANCE FROM COMPLETED
PORTION OF WELLBORE TO
NEAREST UNIT BOUNDARY= 1197'

SHARON 21-5HZ WELLBORE SPACING UNIT



SURFACE LOCATION: NAD 83
GROUND ELEVATION= 4937.5'
LATITUDE= 40.297416°
LONGITUDE= -104.897600°
LATITUDE= 40°17'50.699"
LONGITUDE= -104°53'51.362"
HEEL LOCATION: NAD 83
LATITUDE= 40.302216°
LONGITUDE= -104.895515°
LATITUDE= 40°18'07.976"
LONGITUDE= -104°53'43.852"
BOTTOM HOLE LOCATION: NAD 83
LATITUDE= 40.302511°
LONGITUDE= -104.931590°
LATITUDE= 40°18'09.040"
LONGITUDE= -104°55'53.724"



WELL PAD - SHARON 11-21HZ

SHARON 21-5HZ
WELLBORE SPACING UNIT
2298' FSL & 2206' FWL NESW (SURFACE)
1197' FNL & 2550' FEL NWNE (HEEL)
LOCATED IN SECTION 21
1351' FNL & 2390' FEL SWNE (BOTTOM)
LOCATED IN SECTION 19
T4N, R67W, 6TH P.M.
WELD COUNTY, COLORADO

**Kerr-McGee Oil &
Gas Onshore L.P.**
1099 18th Street
Denver, Colorado 80202



CONSULTING, LLC

SHERIDAN OFFICE
1095 Saberton Avenue
Sheridan, Wyoming 82801
Phone 307-674-0609

LOVELAND OFFICE
1635 Foxtrail Drive, Suite 204
Loveland, Colorado 80538
Phone 970-776-4331

DRAFTED BY:	LMO	CHECKED BY:	RKF
DATE DRAFTED:	3/22/18	DATE SURVEYED:	3/1/18
REVISED:		FILE NAME:	17-235

NOTES:

1. DRAWING LATITUDE AND LONGITUDE COORDINATES ARE NAD 83 (2011)(EPOCH:2010).
2. ELEVATION BASED ON NAVD88 (GEOID12B).
3. BASIS OF BEARING DERIVED FROM COLORADO COORDINATE SYSTEM OF 1983 NORTH ZONE.
4. ALL MEASURED DISTANCES ARE GRID. COMBINED SCALE FACTOR: .99972673 CALCULATED FROM THE CENTER 1/4 CORNER OF SECTION 20, T4N, R67W.