

CS400
CEMENT BOND
LOG

FIELD

ALL INTERPRETATIONS ARE OPINIONS BASED ON INFERENCES FROM ELECTRICAL OR OTHER MEASUREMENTS AND WE CANNOT AND DO NOT GUARANTEE THE ACCURACY OR CORRECTNESS OF ANY INTERPRETATION, AND WE SHALL NOT, EXCEPT IN THE CASE OF GROSS OR WILLFULL NEGLIGENCE ON OUR PART, BE LIABLE OR RESPONSIBLE FOR ANY LOSS, COSTS, DAMAGES, OR EXPENSES INCURRED OR SUSTAINED BY ANYONE RESULTING FROM ANY INTERPRETATION MADE BY ANY OF OUR OFFICERS, AGENTS OR EMPLOYEES. THESE INTERPRETATIONS ARE ALSO SUBJECT TO OUR GENERAL TERMS AND CONDITIONS SET OUT IN OUR CURRENT PRICE SCHEDULE.

REMARKS	Rig: MAST UNIT	Service Order # 38569
LOG CORRELATED TO HALLIBURTON INDUCTION LOG DATED 3-25-01		BMT 110 %

Prints:

THANK YOU FOR USING COMPUTALOG !!!

[illegible]

REMARKS

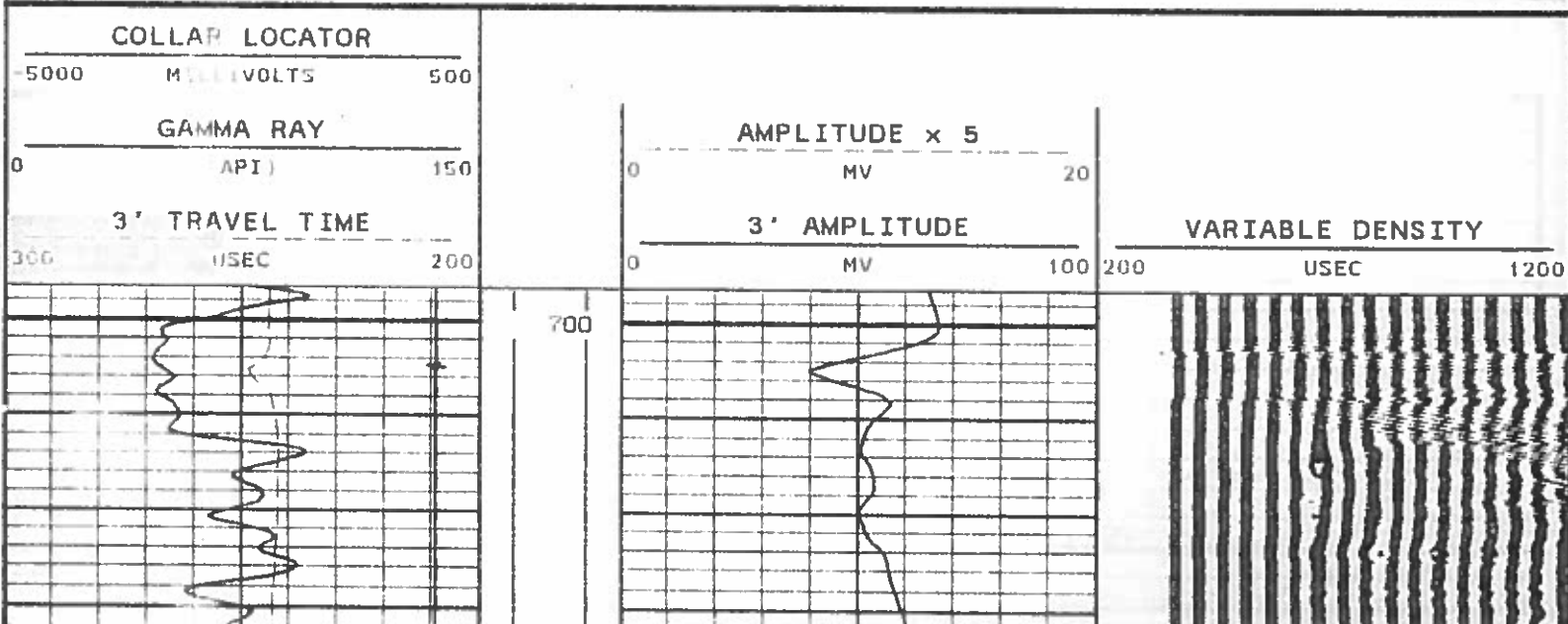
UPPER MAIN PASS
0 PSI
5 1/2" 15.5# CASING

VERSION: 1.54

MAIN PASS

38569C.BL3

FINISH DEPTH: 697.6 FEET DIRECTION: UP DATE: 04/09/2001 TIME: 22:31 MODE: TRACE PLAYBACK



MAIN PASS

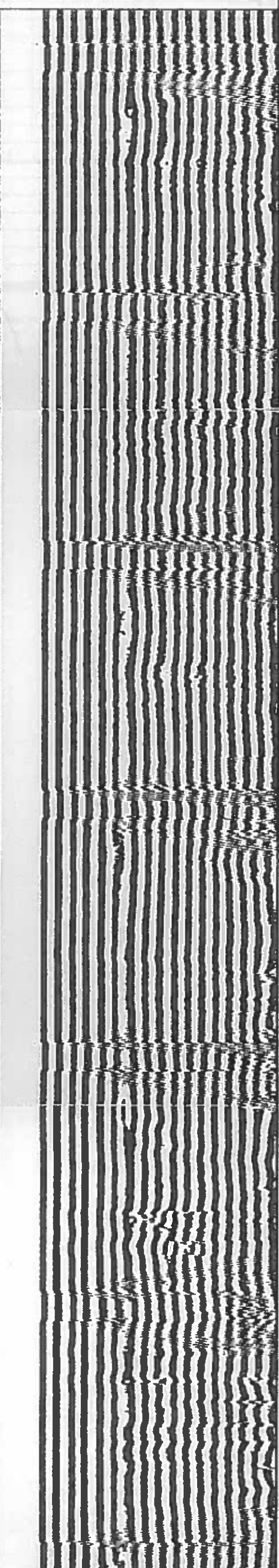
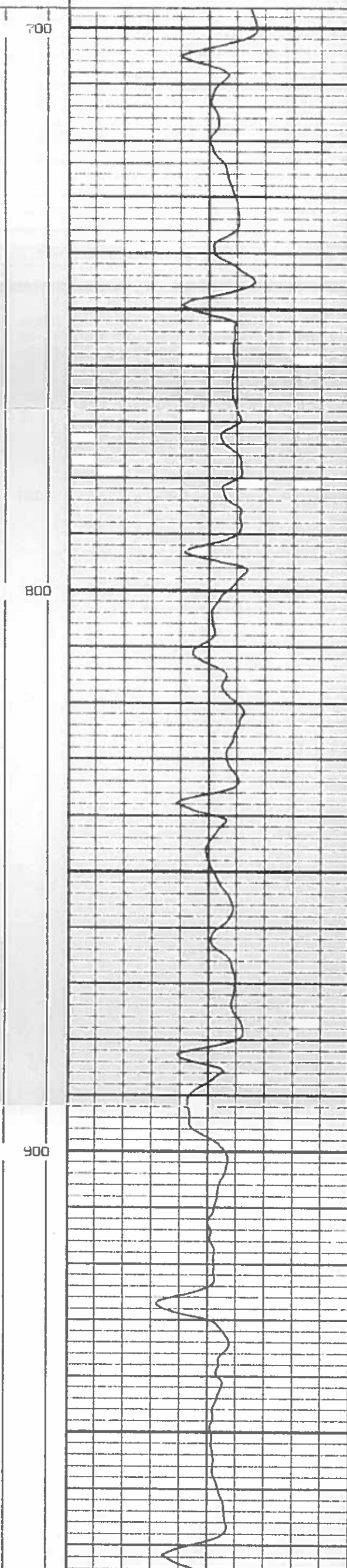
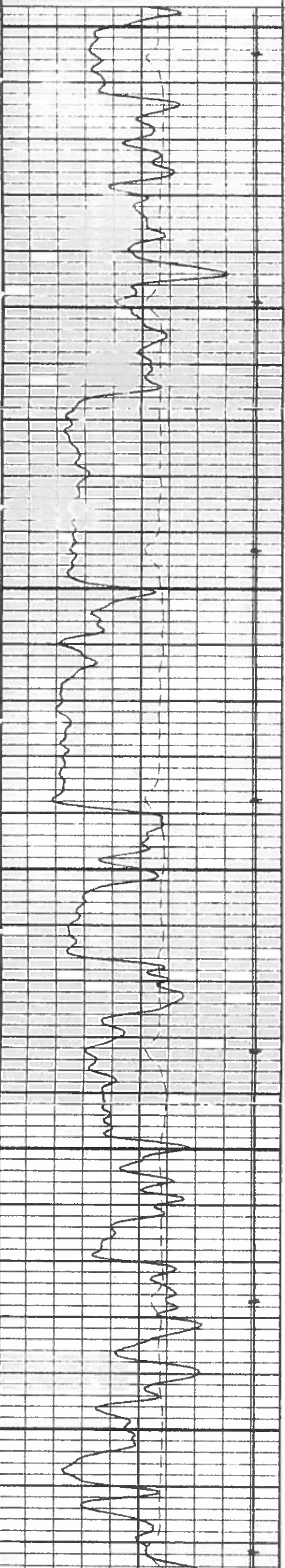
38569CBL3

FINISH DEPTH: 697.6 FEET DIRECTION: UP DATE: 04/09/2001 TIME: 22:31 MODE: TRACE PLAYBACK

COLLAR LOCATOR
-5000 MILLIVOLTS 500
GAMMA RAY
0 API 150
3' TRAVEL TIME
300 USEC 200

AMPLITUDE x 5
0 MV 20
3' AMPLITUDE
0 MV 100

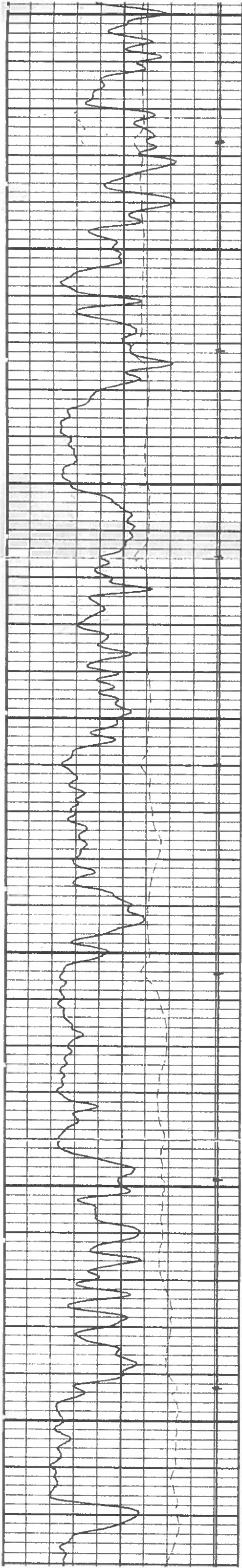
VARIABLE DENSITY
200 USEC 1200



700

800

900

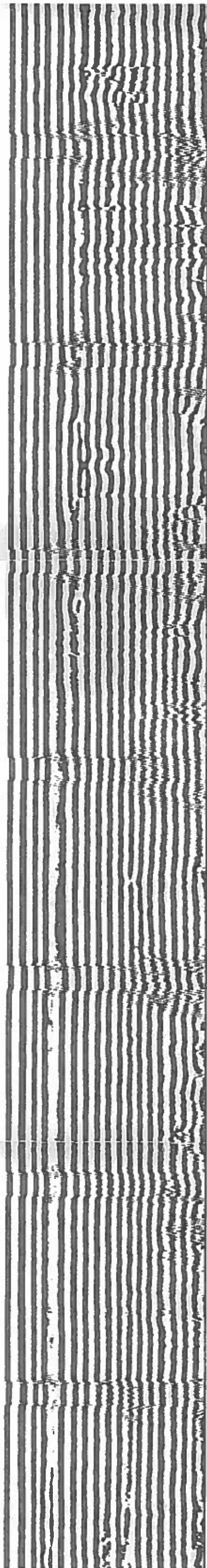
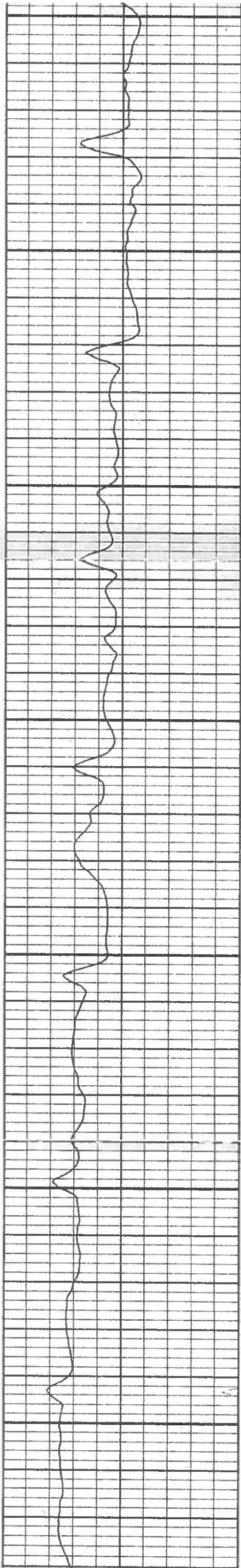


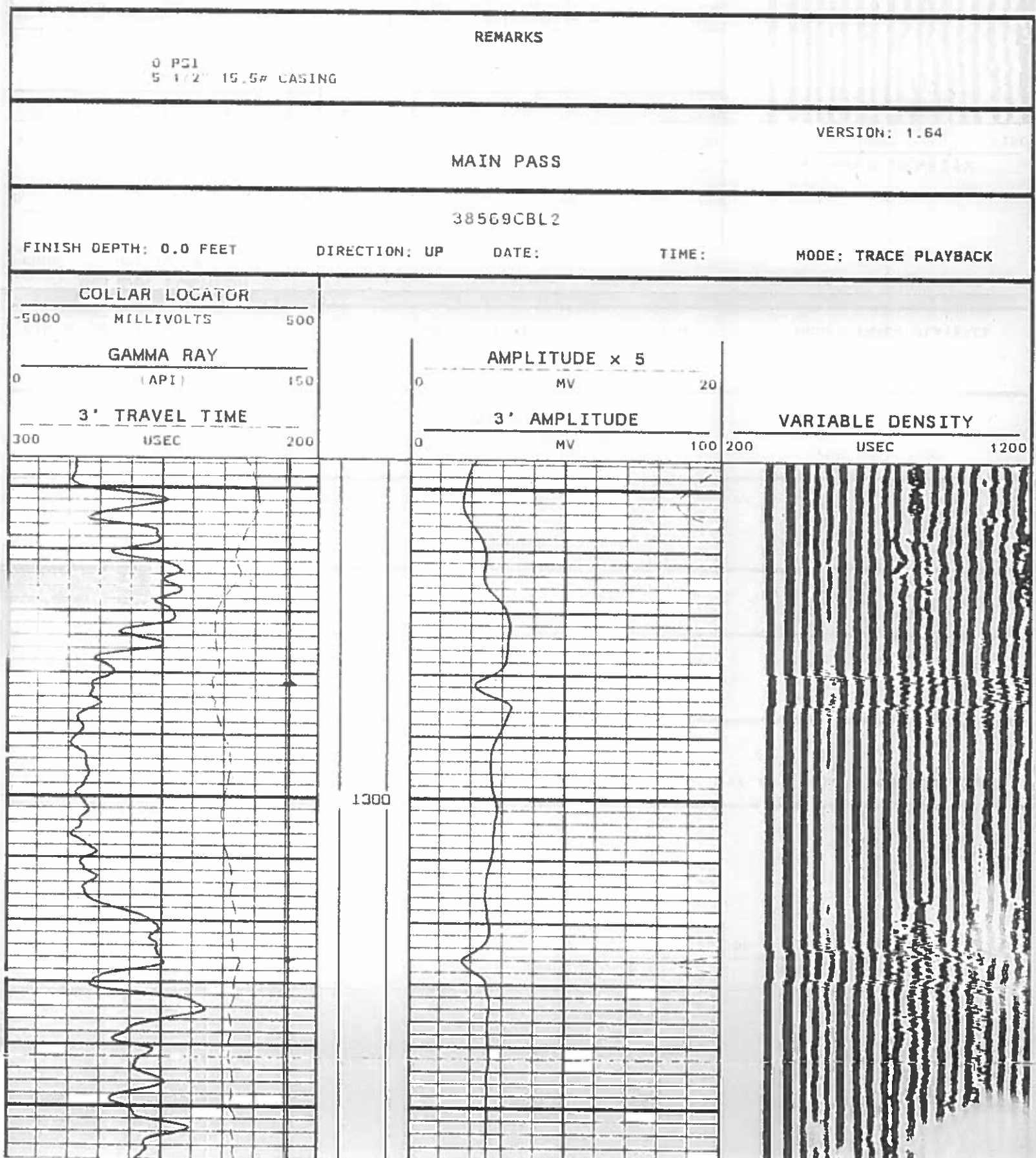
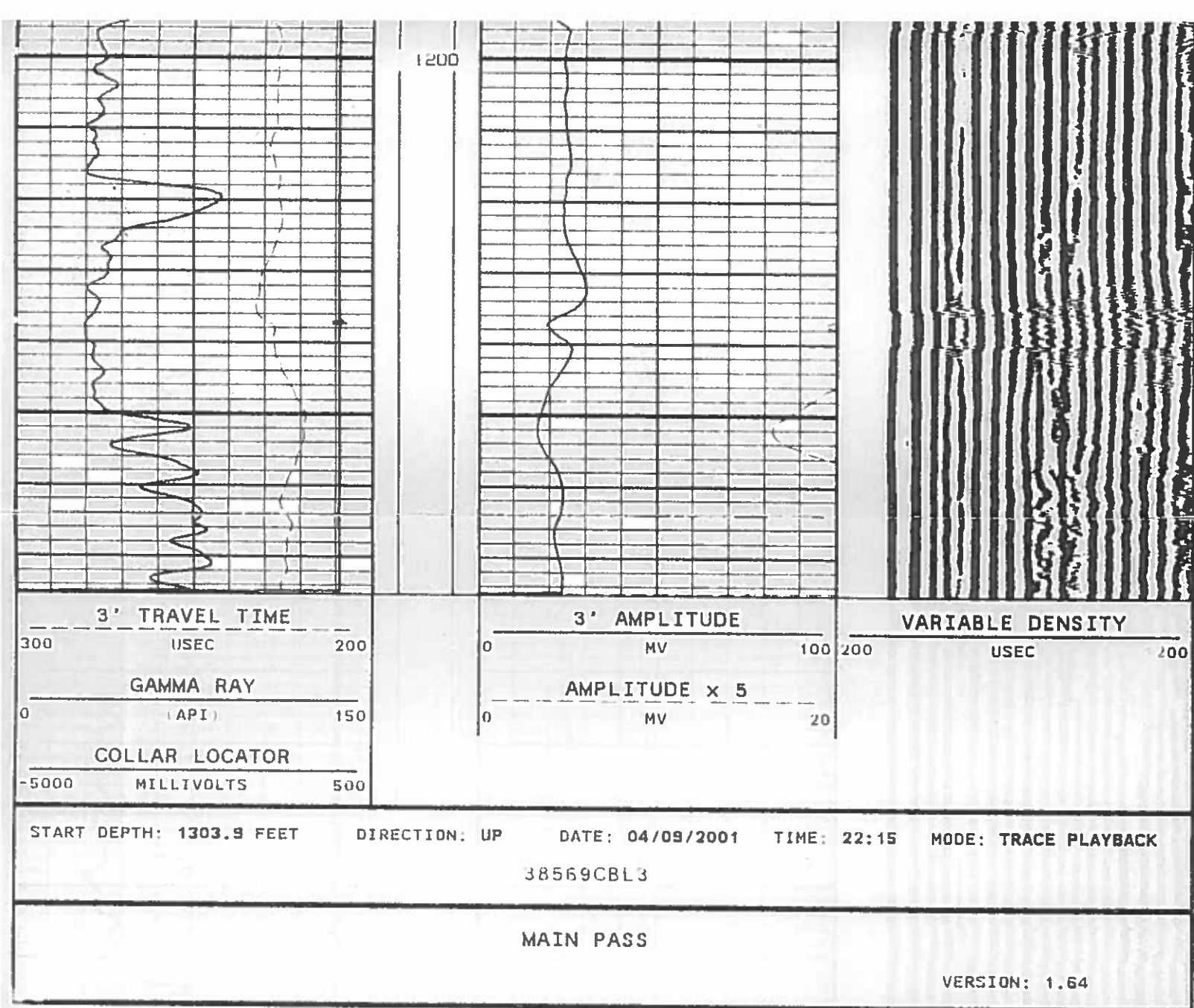
900

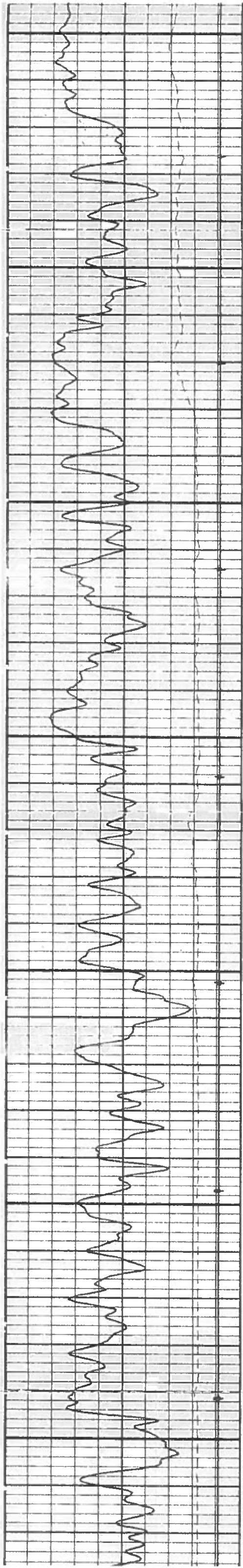
1000

1100

1200





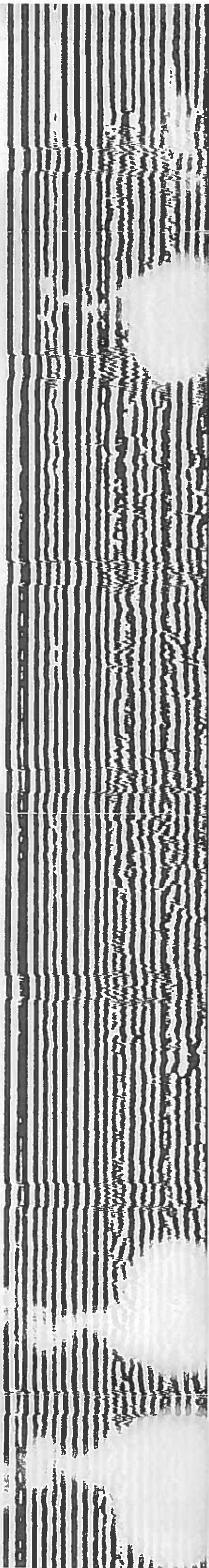
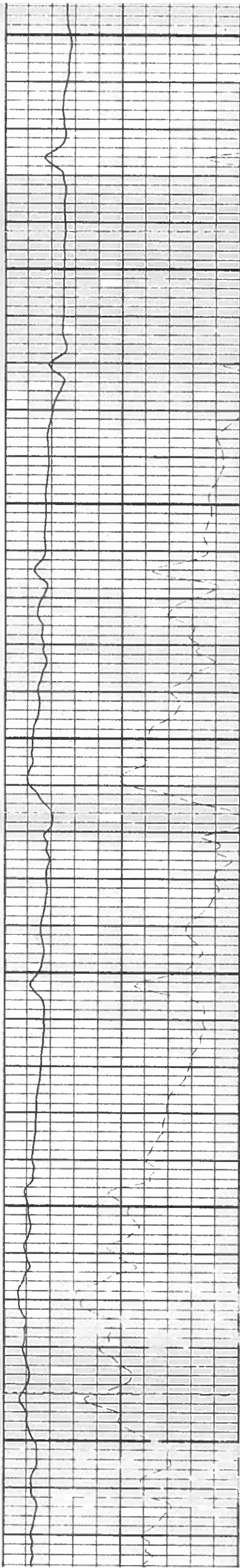


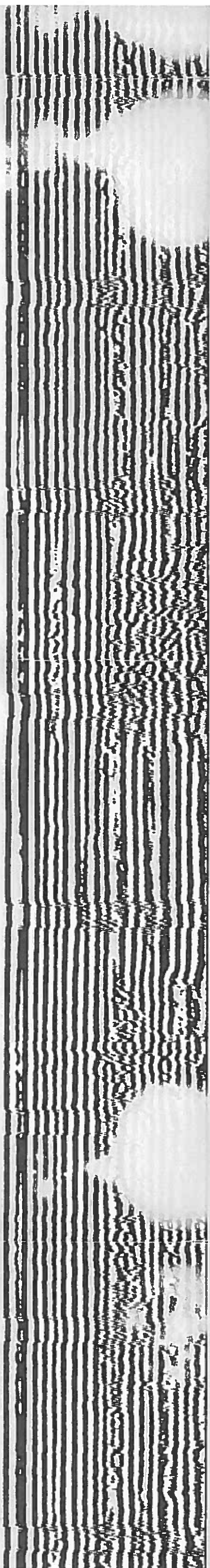
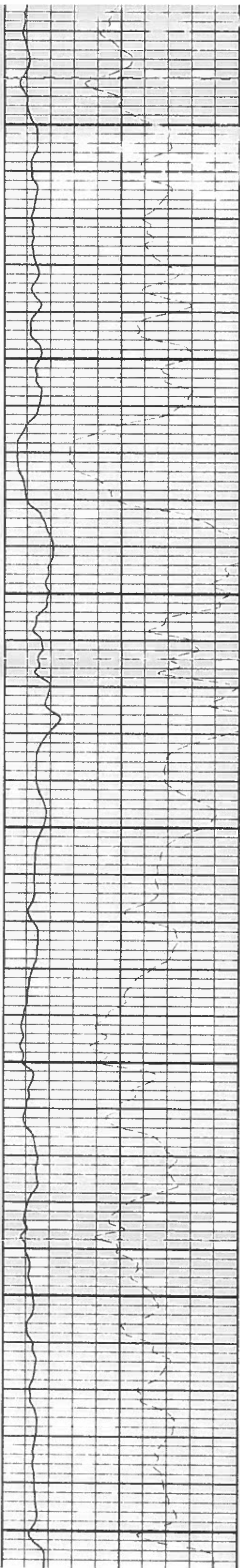
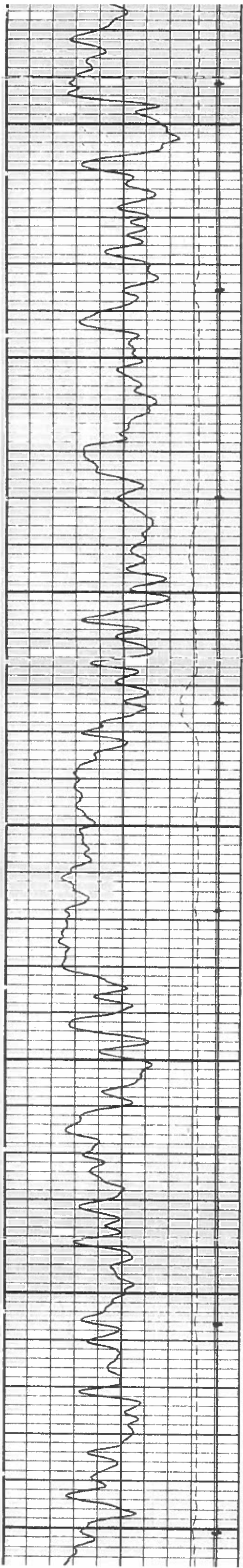
1300

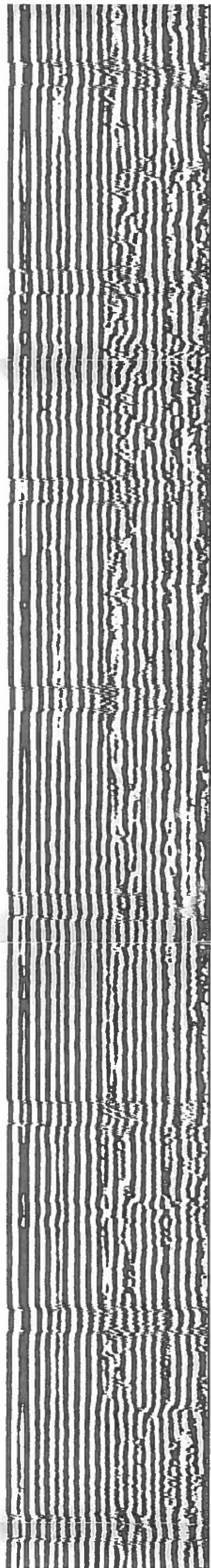
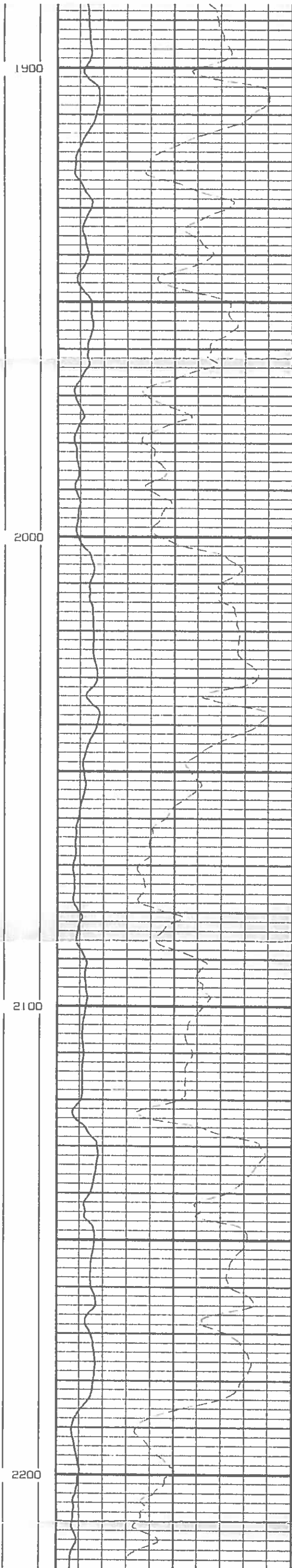
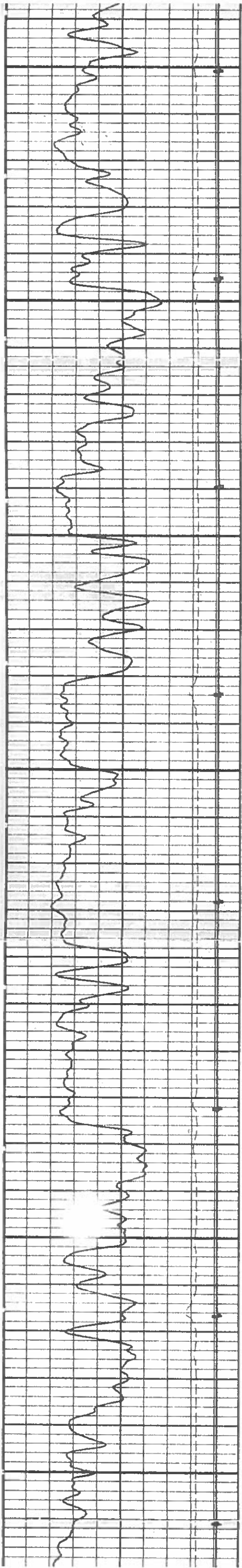
1400

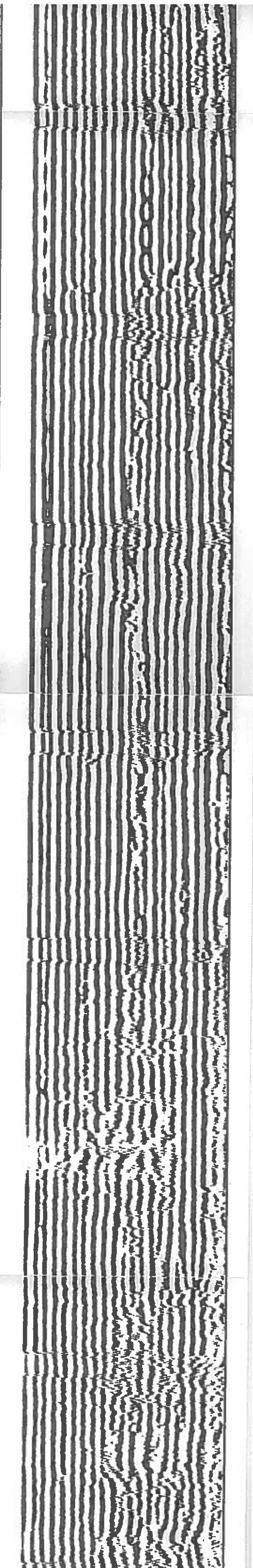
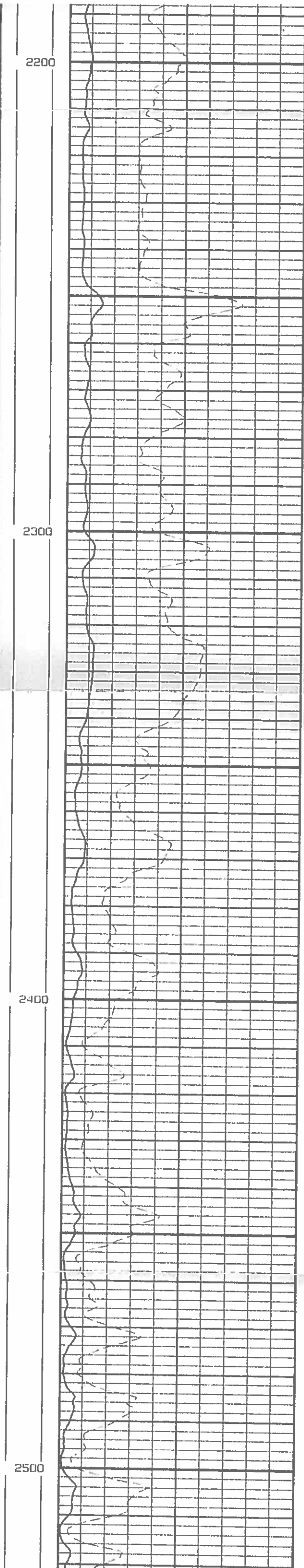
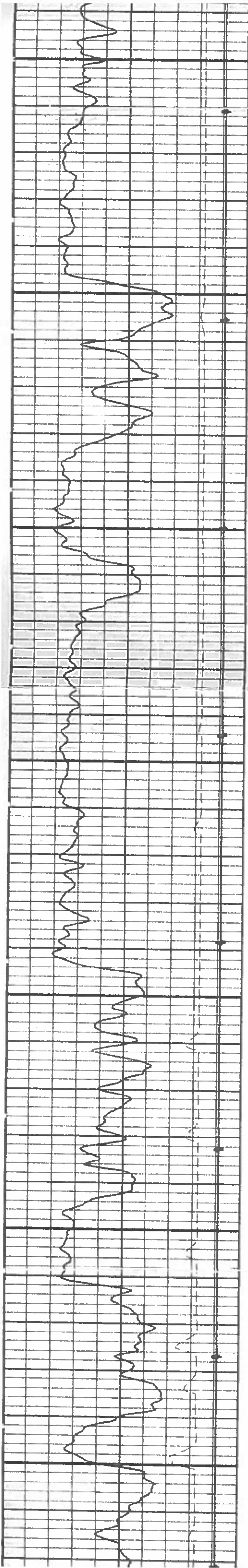
1500

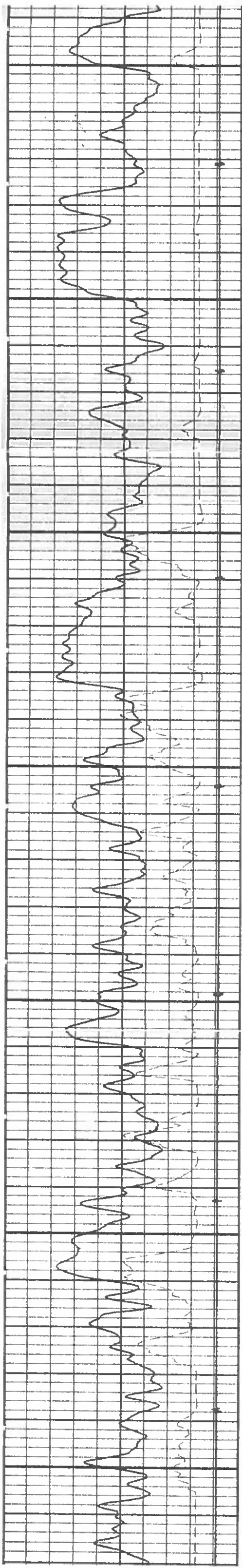
1600









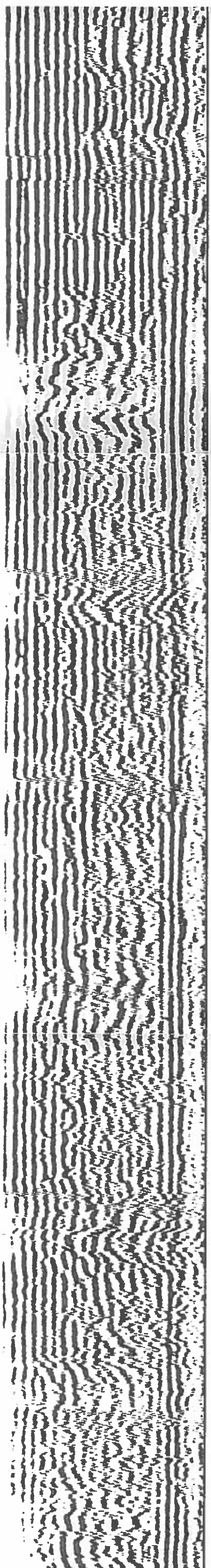
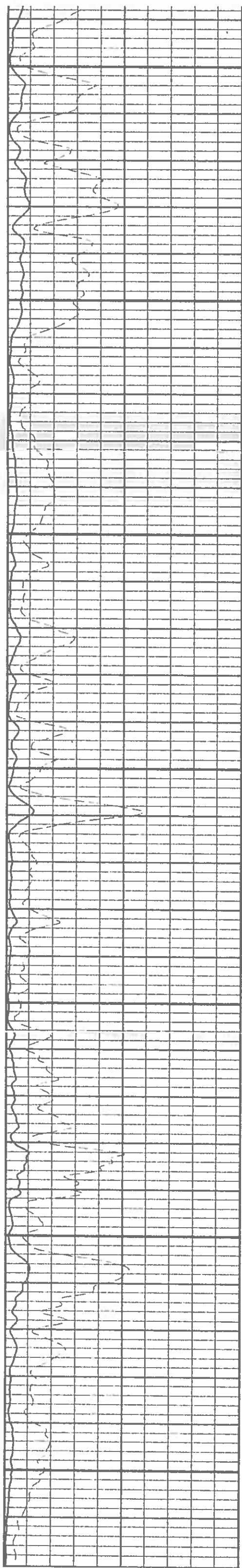


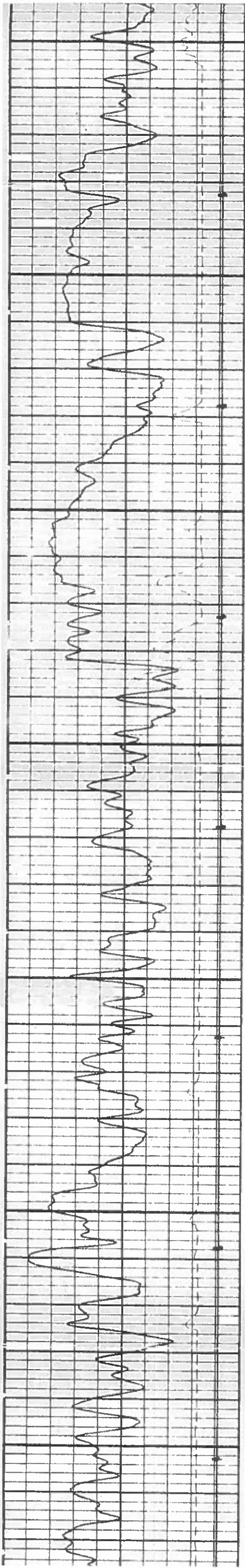
2500

2600

2700

2800



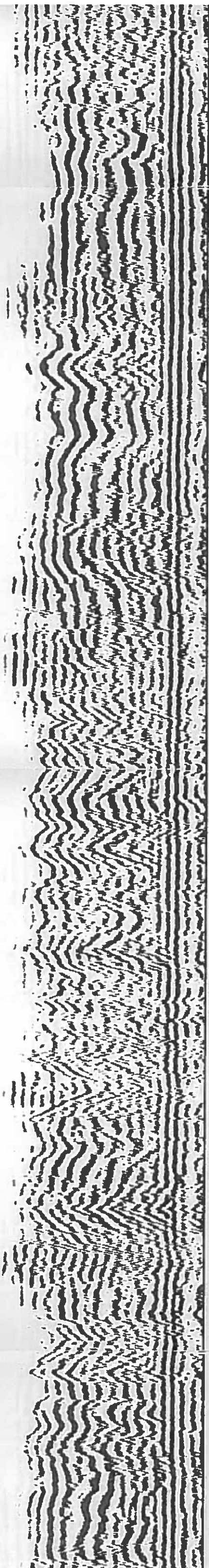
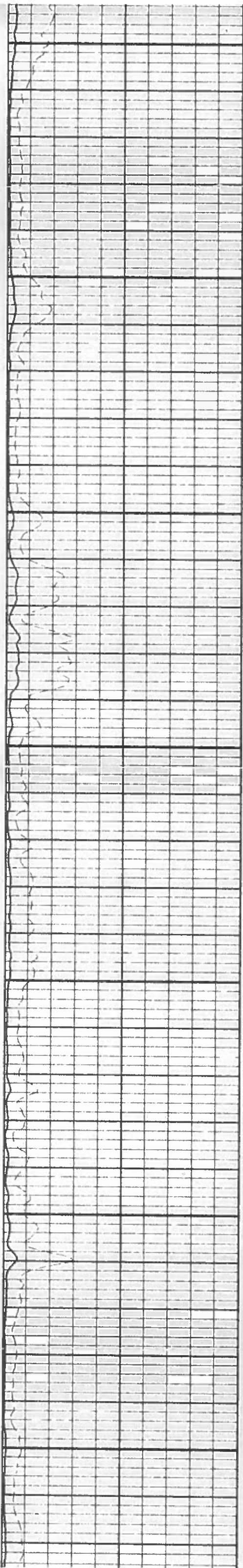


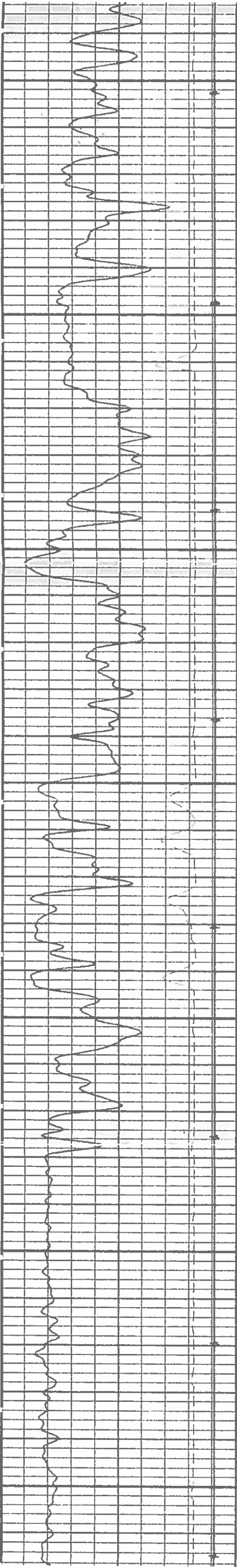
2800

2400

3000

3100



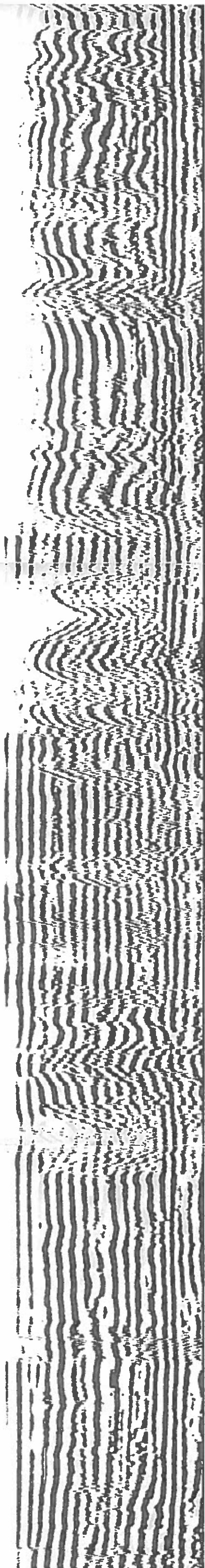
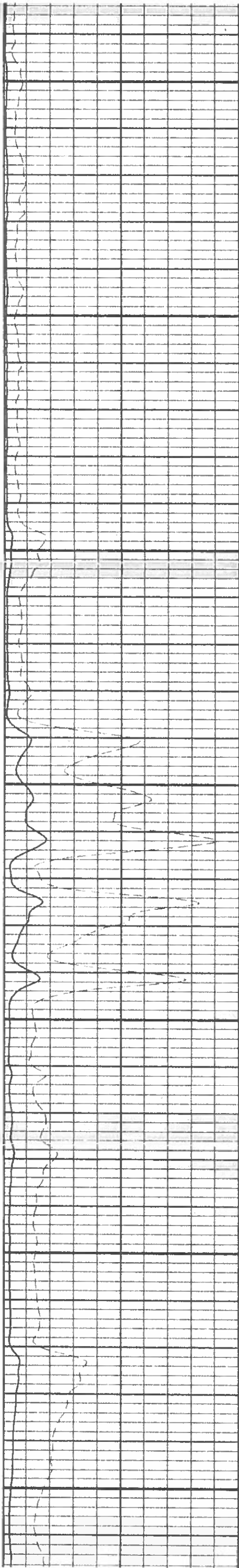


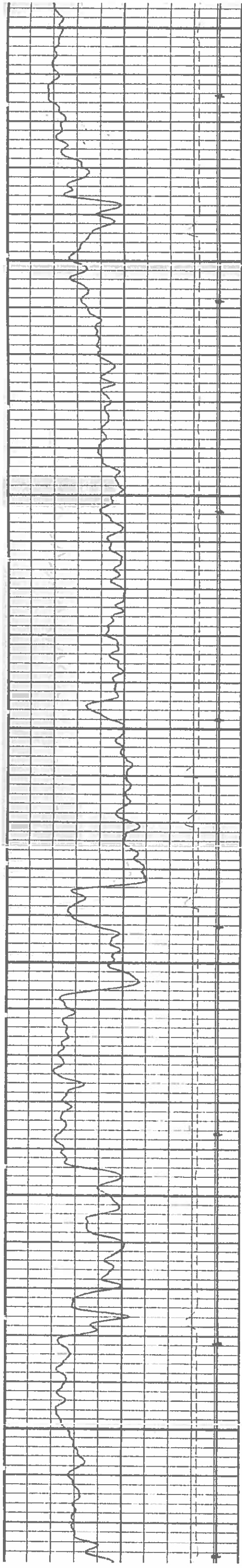
3100

3200

3300

3400



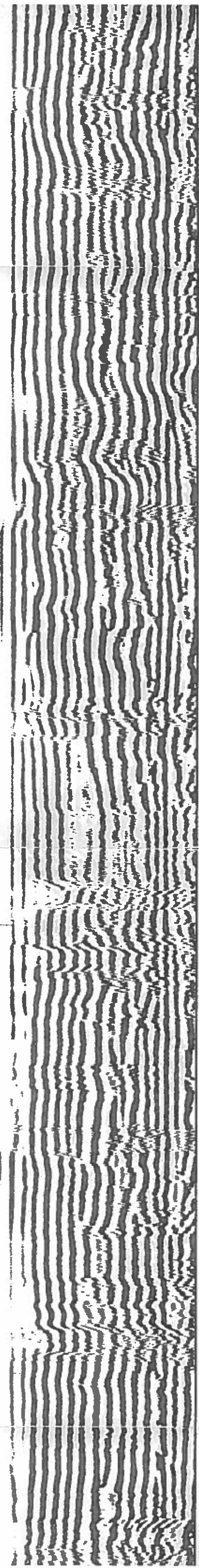
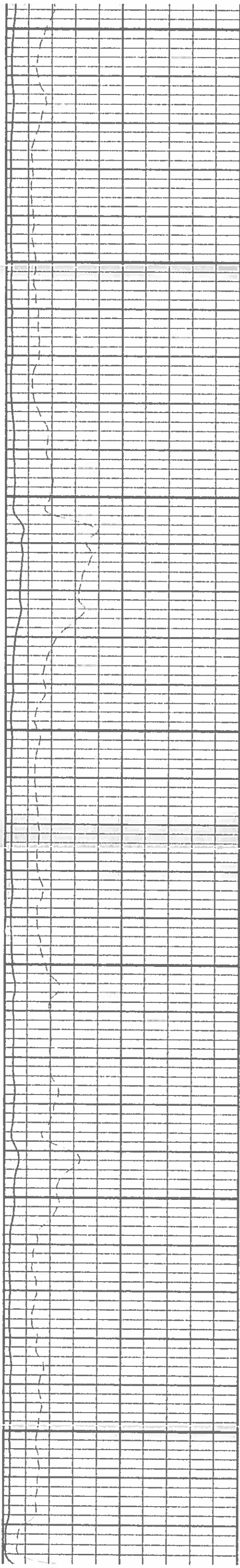


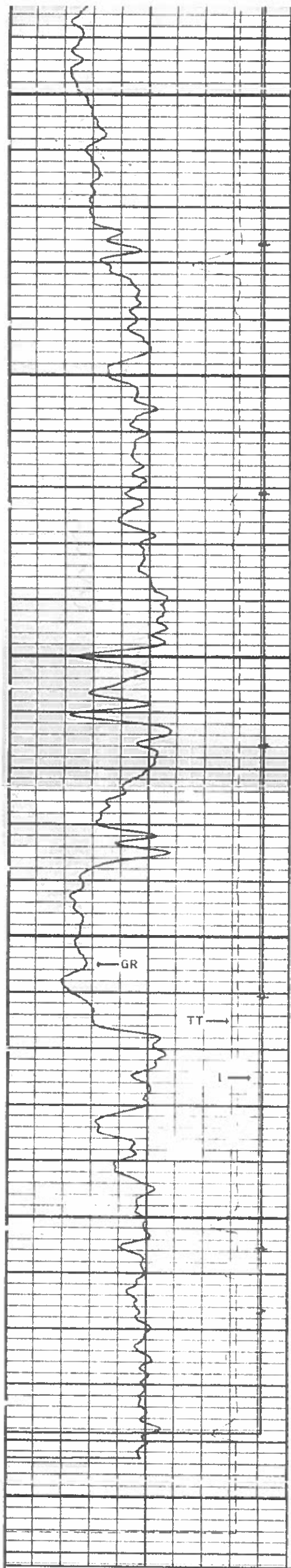
3400

3500

3600

3700

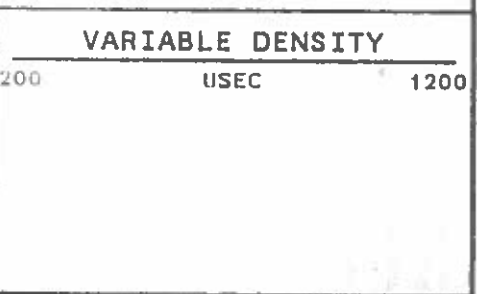
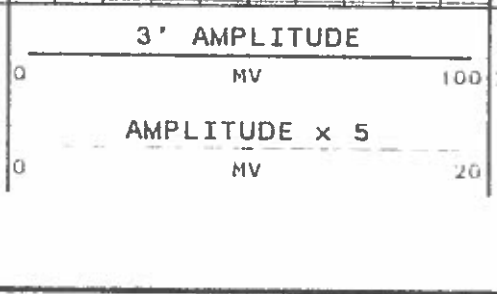
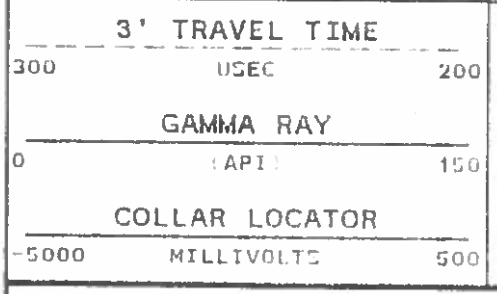
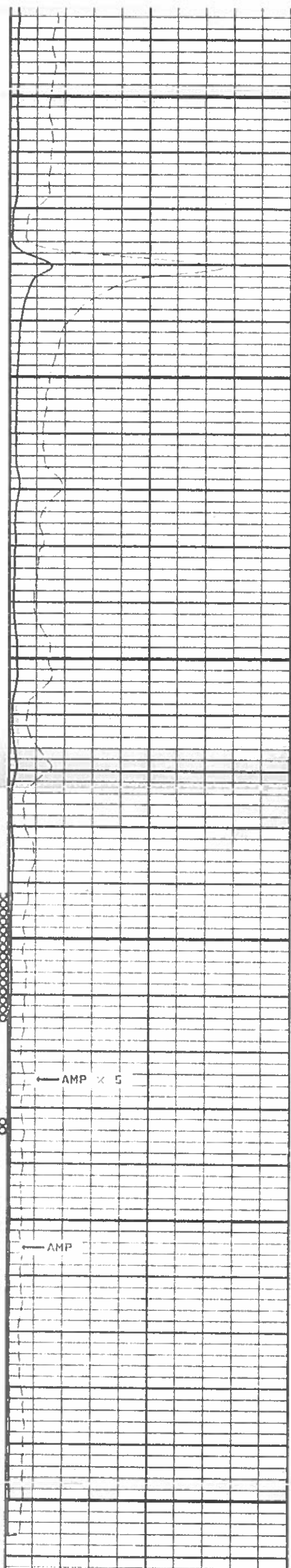


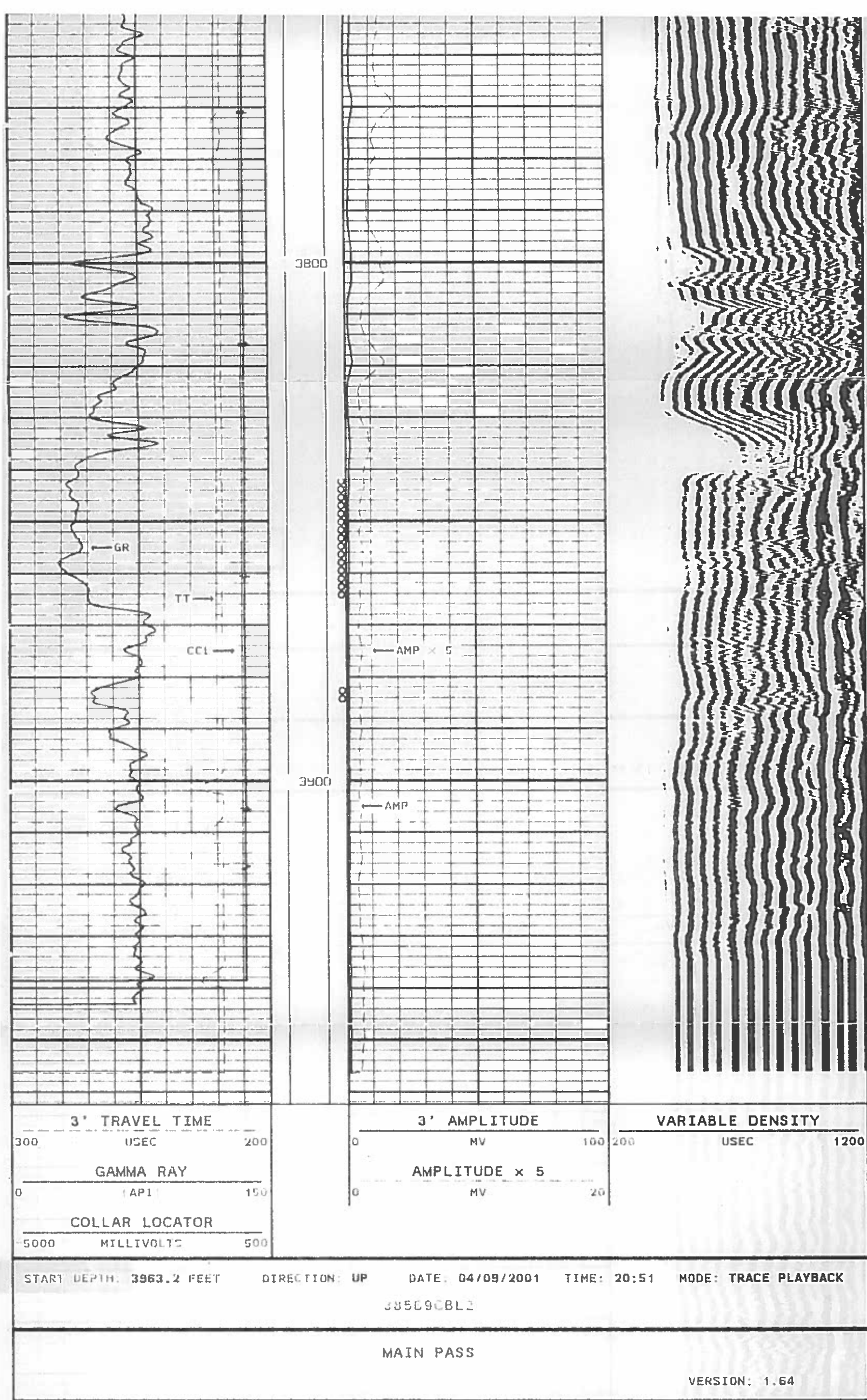


3700

3800

3900



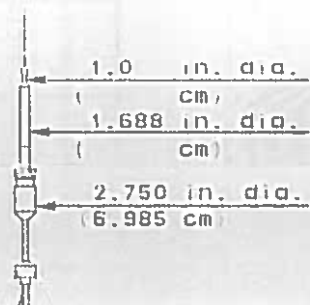


Single Conductor Adaptor Head

Weight 2 LBS
Length 2'
Max. Diameter 1 7/16"

Total Stack Weight 190 LBS in air
Total Stack Length 28'

Slim Hole Centralizer



Slim Hole Centralizer

Weight 10 LBS
Length 2.5'
Max. Diameter 2.75"

Collar Locator

Weight 35 LBS
Length 1.40'
Max. Diameter 2.75"

Slim Hole Gamma Ray

Weight 40 LBS
Length 2.5'
Max. Diameter 2.75"

Slim Hole Centralizer

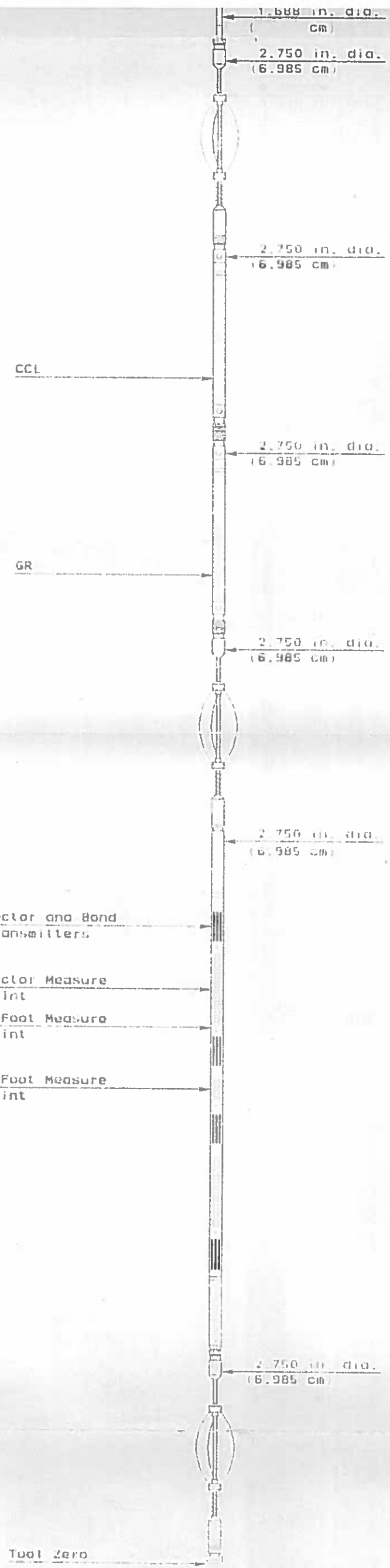
Weight 10 LBS
Length 2.5'
Max. Diameter 2.75"

Sector Bond

Weight 90 LBS
Length 10.30'
Max. Diameter 2.75"

Slim Hole Centralizer

Weight 10 LBS
Length 2.5'
Max. Diameter 2.75"



COMPANY	KOCH EXPLORATION COMPANY		
WELL	HSC # 3-17		
FIELD	SHIRE GULCH	STATE	CO

