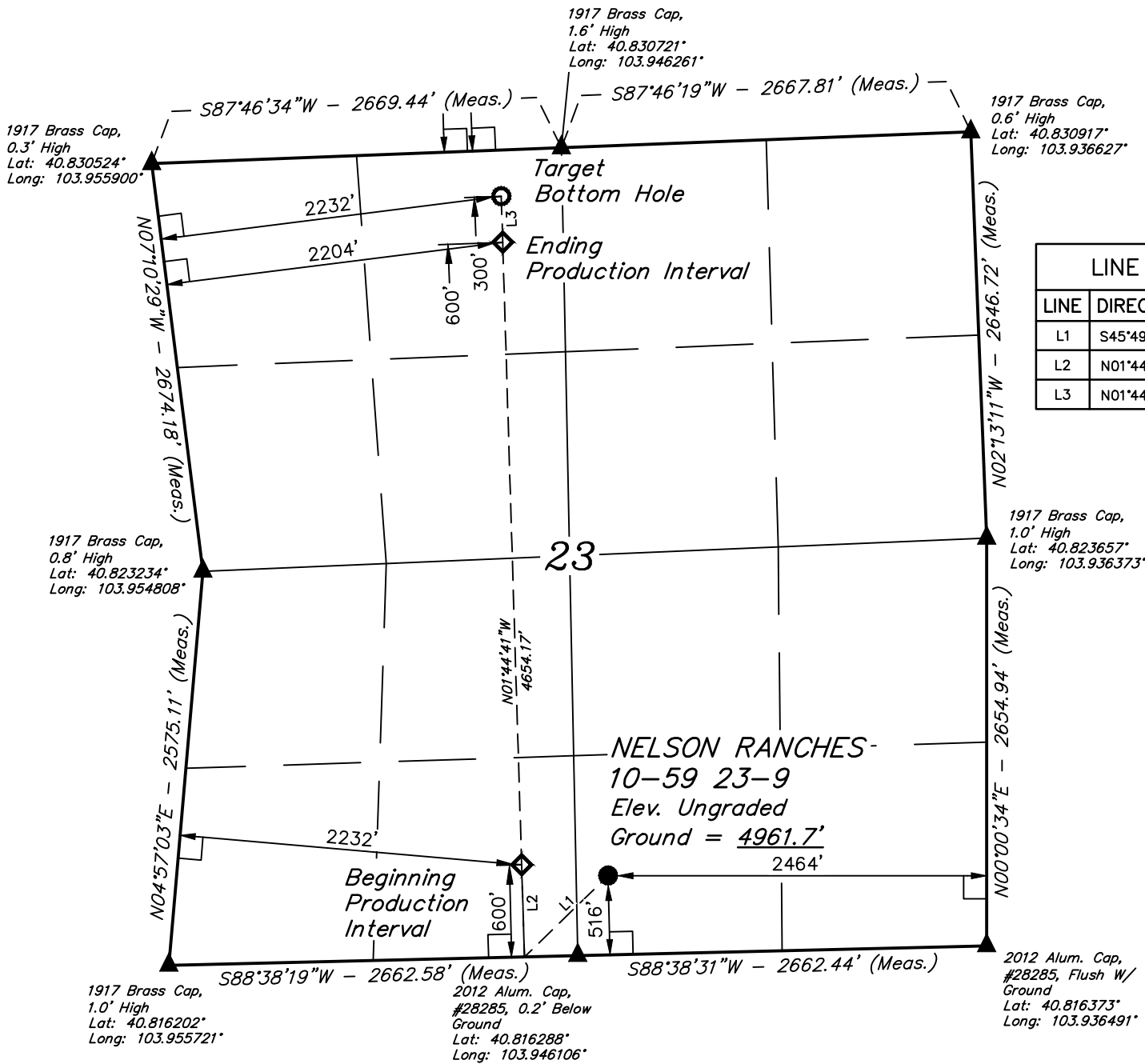


LEGEND:

- = 90° SYMBOL
- = PROPOSED WELLHEAD.
- = PRODUCTION INTERVAL.
- = TARGET BOTTOM HOLE.
- = SECTION CORNERS LOCATED. (NAD 83)

T10N, R59W, 6th P.M.



LINE TABLE		
LINE	DIRECTION	LENGTH
L1	S45°49'40"W	759.30'
L2	N01°44'41"W	600.01'
L3	N01°44'41"W	300.01'

<b>SURFACE LOCATION</b> 516' FSL 2464' FEL
<b>NAD 83 (SURFACE LOCATION)</b> LATITUDE = 40°49'03.76" (40.817711°) LONGITUDE = 103°56'43.32" (103.945368°)
<b>NAD 27 (SURFACE LOCATION)</b> LATITUDE = 40°49'03.81" (40.817724°) LONGITUDE = 103°56'41.51" (103.944865°)
<b>STATE PLANE NAD 83 (CO. NORTH)</b> N: 1544511.48' E: 3430291.16'
<b>STATE PLANE NAD 27 (CO. NORTH)</b> N: 544509.45' E: 2430441.88'

PDOP = 1.3



BEGINNING PRODUCTION INTERVAL 600' FSL 2232' FWL	ENDING PRODUCTION INTERVAL 600' FNL 2204' FWL	TARGET BOTTOM HOLE 300' FNL 2232' FWL
<b>NAD 83 (BEG. PROD. INTERVAL)</b> LATITUDE = 40°49'04.52" (40.817923°) LONGITUDE = 103°56'50.63" (103.947397°)	<b>NAD 83 (ENDING PROD. INTERVAL)</b> LATITUDE = 40°49'44.56" (40.829045°) LONGITUDE = 103°56'51.60" (103.947667°)	<b>NAD 83 (TARGET BOTTOM HOLE)</b> LATITUDE = 40°49'47.53" (40.829868°) LONGITUDE = 103°56'51.67" (103.947687°)
<b>NAD 27 (BEG. PROD. INTERVAL)</b> LATITUDE = 40°49'04.57" (40.817937°) LONGITUDE = 103°56'48.82" (103.946894°)	<b>NAD 27 (ENDING PROD. INTERVAL)</b> LATITUDE = 40°49'44.61" (40.829059°) LONGITUDE = 103°56'49.79" (103.947164°)	<b>NAD 27 (TARGET BOTTOM HOLE)</b> LATITUDE = 40°49'47.58" (40.829882°) LONGITUDE = 103°56'49.86" (103.947184°)
<b>STATE PLANE NAD 83 (CO. NORTH)</b> N: 1544579.01' E: 3429728.08'	<b>STATE PLANE NAD 83 (CO. NORTH)</b> N: 1548629.25' E: 3429582.43'	<b>STATE PLANE NAD 83 (CO. NORTH)</b> N: 1548928.97' E: 3429571.65'
<b>STATE PLANE NAD 27 (CO. NORTH)</b> N: 544576.96' E: 2429878.79'	<b>STATE PLANE NAD 27 (CO. NORTH)</b> N: 548627.19' E: 2429733.10'	<b>STATE PLANE NAD 27 (CO. NORTH)</b> N: 548926.91' E: 2429722.32'

CERTIFICATE OF SURVEY  
THIS IS TO CERTIFY THAT THE ABOVE AND WAS PREPARED FROM FIELD NOTES OF ACTUAL SURVEYS MADE BY ME OR UNDER MY SUPERVISION, AND THAT THE SAME ARE TRUE AND CORRECT TO THE BEST OF MY KNOWLEDGE AND BELIEF.



**BASIS OF BEARINGS**  
TRANSVERSE MERCATOR PROJECTION  
WITH A CENTRAL MERIDIAN OF W105°00'00".

**BASIS OF ELEVATION**  
OPUS SOLUTION GENERATED NAVD 88



**UELS, LLC**  
Corporate Office \* 85 South 200 East  
Vernal, UT 84078 \* (435) 789-1017



**BISON OIL & GAS II**

**NELSON RANCHES 10-59 23-9**  
**SW 1/4 SE 1/4, SECTION 23, T10N, R59W, 6th P.M.**  
**WELD COUNTY, COLORADO**

<b>SURVEYED BY</b>	JAMES FRESHWATER, N.W.	04-06-18	<b>SCALE</b>
<b>DRAWN BY</b>	C. IVIE	04-16-18	1" = 1000'

**WELL LOCATION PLAT**