

Inspection Photos

05/24/2018

Operator: CM PRODUCTION LLC - 10352

Location ID: 317120

Inspection Doc. Number: 682503375

Washington County, CO

Aaron Trujillo
NE Reclamation Specialist
COGCC

Inspection Photos
Operator: CM PRODUCTION LLC - 10352
Location ID: 317120



Photo 1: Photo taken east end of the tank battery facility, facing southwest. Photos 1-4 show an overview of the location, facing southwest, to west, to north.



Photo 2: Photo taken east end of the tank battery facility, facing west.

Inspection Photos
Operator: CM PRODUCTION LLC - 10352
Location ID: 317120



Photo 3: Photo taken east end of the tank battery facility, facing northwest.



Photo 4: Photo taken east end of the tank battery facility, facing north.



Photo 5: Photo taken from the south end of the location, at the tanks, facing southwest. Photo shows undesirable weedy plant establishment on the berms. Photo also shows wildlife appears to have created burrows/holes within the side of the berms.



Photo 6: Photo taken from the berms on the south end of the location. Photo shows undesirable weedy plant species (Kochia) establishing on the location.



Photo 7: Photo taken from the south end of the tank battery. Photo shows what appears to be crude oil is leaking from the southwestern tank.



Photo 8: Photo taken from the south end of the tank battery. Photo shows what appears to be crude oil is leaking from the valve of the southwestern tank.

Inspection Photos
Operator: CM PRODUCTION LLC - 10352
Location ID: 317120



Photo 9: Photo taken from the southwest end of the location, facing north. Photo shows undesirable weedy plant species establishing on the location.



Photo 10: Photo taken from the southwest end of the location facing east. Photo shows undesirable weedy plant species establishing on the location.

Inspection Photos
Operator: CM PRODUCTION LLC - 10352
Location ID: 317120



Photo 11: Photo taken from the west end of the location, facing east. Photo shows undesirable weedy plant species establishing on the location.



Photo 12: Photo taken from the west end of the location, facing south. Photo shows undesirable weedy plant species establishing on the location.



Photo 13: Photo taken from the west of the southern pit, facing east. Photo shows undesirable weedy plant species establishing on the location.



Photo 14: Photo taken from the west of the southern pit, facing north. Photo shows undesirable weedy plant species establishing on the location.



Photo 15: Photo taken from the west end of the netter-skim pit. Photo shows remaining kochia debris from the previous growing season, as well as new weed growth



Photo 16: Photo taken from the southwest end of the central pit, facing north. Vegetation seen in this photo is predominantly undesirable cheatgrass mixed with kochia.



Photo 17: Photo taken from the southwest corner of the central pit, facing north. Vegetation seen in this photo is predominantly undesirable cheatgrass, though perennial grass (yellow arrow) becomes more dominant on the top of the berms, and on the eastern half of the pit.

Patches of kochia (red arrow) can be found along the inside of the pit, as well as in patches on the west end of the pit.



Photo 18: Photo taken from the southwest corner of the central pit, facing northeast. See comments under photo 17.



Photo 19: Photo taken from the southwest corner of the central pit, facing northeast. Photo shows perennial vegetation has established in areas between the pits.



Photo 20: Photo taken from between the central and northern pits. Photo shows perennial vegetation has established in areas between the pits. Vegetation seen here is a mix of Sand dropseed, threeawn, fescue and hairy golden aster. Smooth brome can also be found in the area.

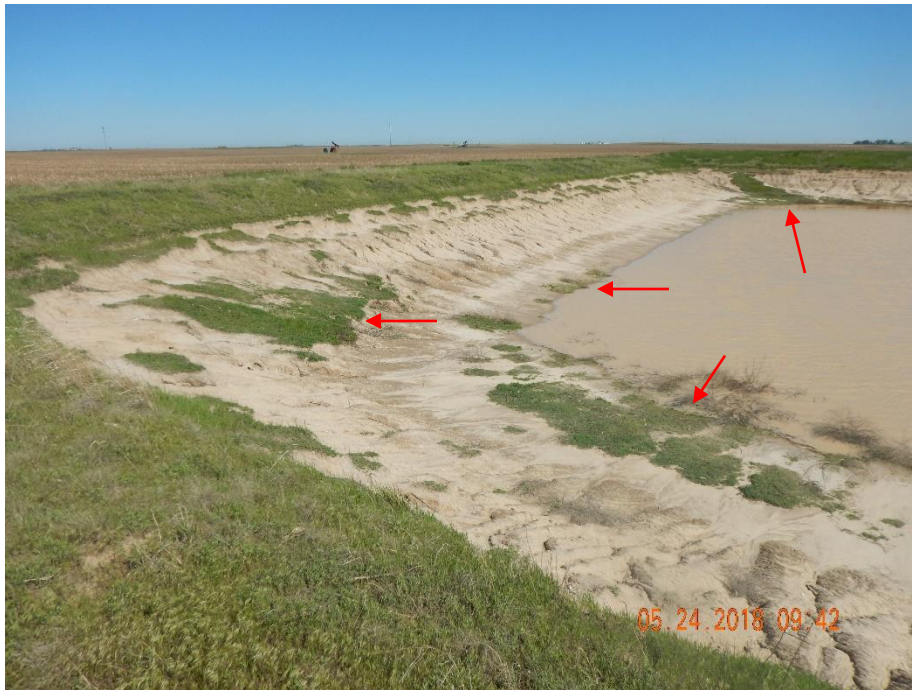


Photo 21: Photo taken from the south end of the northern pit, facing northwest. Though weedy plant species can be found within the pit (arrow), the berms of the pit has a fair amount of perennial grass establishment.



Photo 22: Photo taken from the south end of the northern pit, facing east. Though weedy plant species can be found within the pit (arrow), the berms of the pit has a fair amount of perennial grass establishment.



Photo 23: Photo taken from the west end of the northern pit, facing north. Photo shows perennial grass establishment. On the berms



Photo 24: Photo taken from the west end of the northern pit, facing north. Photo shows perennial grass establishment. On the berms



Photo 25: Photo taken from the northwest end of the northern pit, facing east. Though weedy plant species can be found within the pit (arrow), the berms of the pit has a fair amount of perennial grass establishment. Yellow polygons represent patches of grass within the pit.



Photo 26: Photo taken from the northwest end of the northern pit, facing south. See comments under photo 25

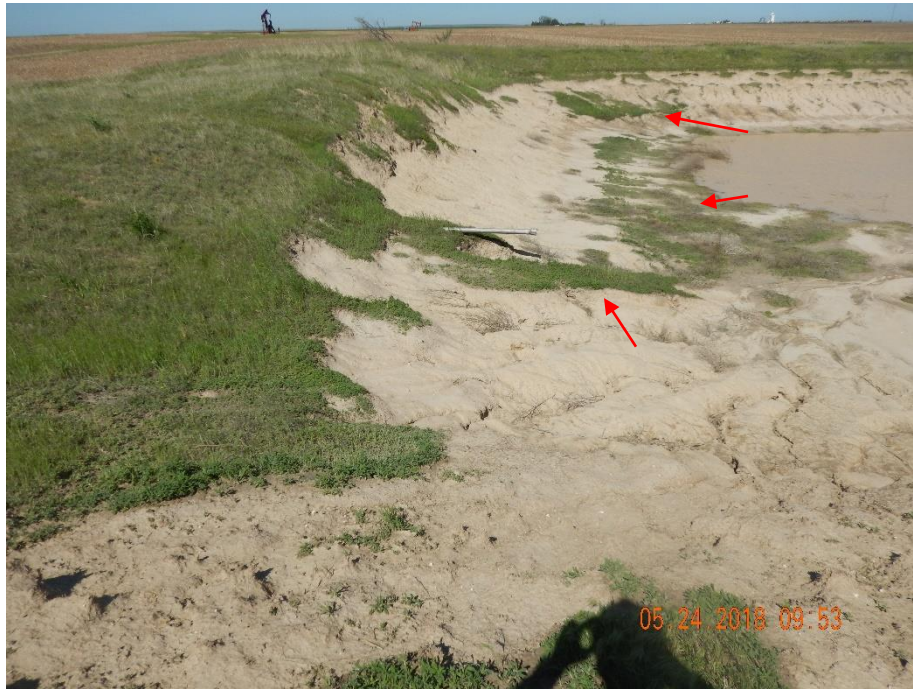


Photo 27: Photo taken from the southeast end of the northern pit, facing west. See comments under photo 25



Photo 28: Photo taken from the southeast end of the northern pit, facing north. See comments under photo 25



Photo 29: Photo taken from the northeast end of the central pit, facing south. Though weedy plant species can be found within the pit (arrow), the berms of the pit has a fair amount of perennial grass establishment.



Photo 30: Photo taken from the northeast end of the central pit, facing west. See comments under photo 29.



Photo 31: Photo taken from the western edge of the central pit. Photo show gully formation due to stormwater erosion.



Photo 32: Photo taken from the south end of the WELL location, facing west. Photos 32- 34 shows overview of the location from west, to north, to east. Vegetation seen on location is predominantly cheatgrass mixed with perennial grasses such as sand dropseed.

Inspection Photos
Operator: CM PRODUCTION LLC - 10352
Location ID: 317120



Photo 33:



Photo 34:



Photo 35: Photo taken at the well location. Photo shows vegetation growing at the well.



Photo 36: Photo taken from the east end of the location, facing east, photo shows access road. Road appears to be in good condition.



Photo 37: Aerial imagery showing the tank battery and pit facilities, as well as the well location. Areas outline in red show portions of the location where higher densities of undesirable weedy plant species such as kochia was documented. Areas are, conservatively, 1 acre in size.