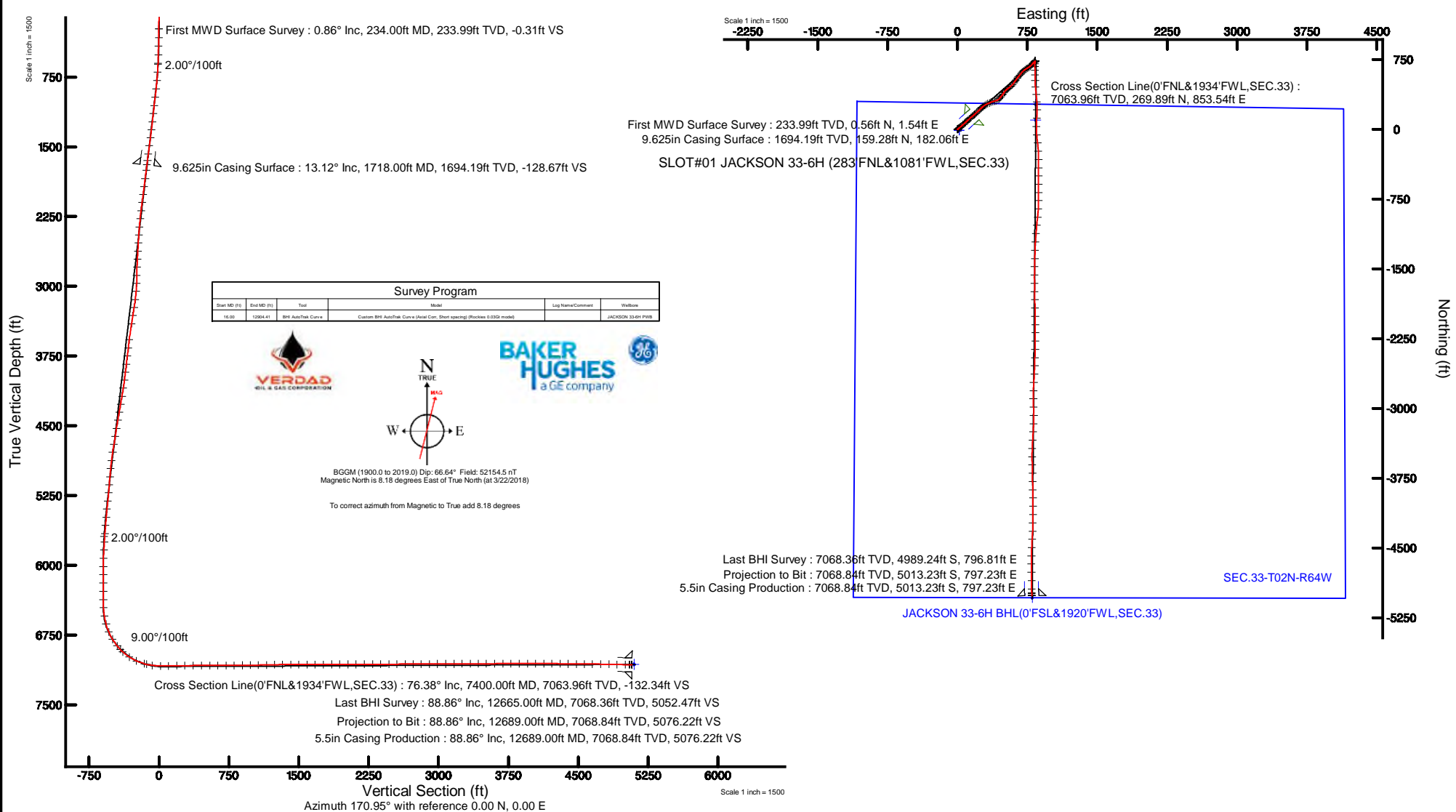


# VERDAD OIL & GAS CORPORATION

Location: COLORADO Slot: SLOT#01 JACKSON 33-6H (283'FNL&1081'FWL,SEC.33)  
Field: WELD COUNTY (NAD83/TN) Well: JACKSON 33-6H  
Facility: SEC.33-T02N-R64W Wellbore: JACKSON 33-6H PWB

Plot reference wellbore is JACKSON 33-6H REV-A-2 PWB	Grid System: NAD83 - Lambert Colorado SP, Northern Zone (2011), US Feet
True vertical depths are referenced to XTRMSE 24 (10'FNL&101'FWL,SEC.33)	1 = Wellbore was transformed from a different geoid datum
Measured depths are referenced to XTRMSE 24 (10'FNL&101'FWL,SEC.33)	North Reference: True north
XTRMSE 24 (10'FNL&101'FWL,SEC.33) to Mean Sea Level: 1032 feet	Scale: True distance
Mean Sea Level to Mud line (At Slot: SLOT#01 JACKSON 33-6H (283'FNL&1081'FWL,SEC.33)) is 0 feet	Depths are in feet
Coordinates are in feet referenced to Slot	Created by: gsmiller on 2018-04-17
	Database: WA_DEN_Denver_Defn

Location Information					
Facility Name		Grid East (US Feet)	Grid North (US Feet)	Latitude	Longitude
SEC 33-T02N-R64W		388584.385	1281185.866	475015.1627N	109°22'41.4527W
Site	Local N (ft)	Local E (ft)	Grid East (US Feet)	Grid North (US Feet)	Latitude
SLOT#01 JACKSON 33-6H (283'FNL&1081'FWL,SEC.33)	610	-1818	388589.07	1281183.869	475015.1627N
XTRMSE 24 (10'FNL&101'FWL,SEC.33) to Mean Sea Level (At Slot: SLOT#01 JACKSON 33-6H (283'FNL&1081'FWL,SEC.33))					1032 ft
Mean Sea Level to Mud line (At Slot: SLOT#01 JACKSON 33-6H (283'FNL&1081'FWL,SEC.33))					0 ft
XTRMSE 24 (10'FNL&101'FWL,SEC.33) to Mean Sea Level					1032 ft





# Actual Wellpath Report

JACKSON 33-6H AWP

Page 1 of 8



REFERENCE WELLPATH IDENTIFICATION			
Operator	VERDAD OIL & GAS CORPORATION	Slot	SLOT#01 JACKSON 33-6H (283'FNL&1081'FWL,SEC.33)
Area	COLORADO	Well	JACKSON 33-6H
Field	WELD COUNTY (NAD83/TN)	Wellbore	JACKSON 33-6H AWB
Facility	SEC.33-T02N-R64W		

REPORT SETUP INFORMATION			
Projection System	NAD83 / Lambert Colorado SP, Northern Zone (501), US feet	Software System	WellArchitect® 5.0
North Reference	True	User	Guenaler
Scale	0.999960	Report Generated	4/17/2018 at 4:11:46 PM
Convergence at slot	0.61° East	Database/Source file	WA_DEN_Denver_Defn/JACKSON_33-6H_AWP.xml

WELLPATH LOCATION						
	Local coordinates		Grid coordinates		Geographic coordinates	
	North[ft]	East[ft]	Easting[US ft]	Northing[US ft]	Latitude	Longitude
Slot Location	8.10	-18.18	3262506.03	1281193.87	40°06'05.242"N	104°33'41.684"W
Facility Reference Pt			3262524.30	1281185.97	40°06'05.162"N	104°33'41.450"W
Field Reference Pt			3242930.13	1254608.21	40°01'44.490"N	104°37'56.946"W

WELLPATH DATUM			
Calculation method	Minimum curvature	XTREME 24 (16'RKB+5016'GL) (RKB) to Facility Vertical Datum	5032.00ft
Horizontal Reference Pt	Slot	XTREME 24 (16'RKB+5016'GL) (RKB) to Mean Sea Level	5032.00ft
Vertical Reference Pt	XTREME 24 (16'RKB+5016'GL) (RKB)	XTREME 24 (16'RKB+5016'GL) (RKB) to Mud Line at Slot (SLOT#01 JACKSON 33-6H (283'FNL&1081'FWL,SEC.33))	5032.00ft
MD Reference Pt	XTREME 24 (16'RKB+5016'GL) (RKB)	Section Origin	N 0.00, E 0.00 ft
Field Vertical Reference	Mean Sea Level	Section Azimuth	170.96°



Actual Wellpath Report

JACKSON 33-6H AWP



REFERENCE WELLPATH IDENTIFICATION			
Operator	VERDAD OIL & GAS CORPORATION	Slot	SLOT#01 JACKSON 33-6H (283'FNL&1081'FWL,SEC.33)
Area	COLORADO	Well	JACKSON 33-6H
Field	WELD COUNTY (NAD83/TN)	Wellbore	JACKSON 33-6H AWB
Facility	SEC.33-T02N-R64W		

WELLPATH DATA (144 stations) † = interpolated/extrapolated station										
MD [ft]	Inclination [°]	Azimuth [°]	TVD [ft]	Vert Sect [ft]	North [ft]	East [ft]	Latitude	Longitude	DLS [°/100ft]	Comments
0.00†	0.000	70.090	0.00	0.00	0.00	0.00	40°06'05.242"N	104°33'41.684"W	0.00	
16.00	0.000	70.090	16.00	0.00	0.00	0.00	40°06'05.242"N	104°33'41.684"W	0.00	
234.00	0.860	70.090	233.99	-0.31	0.56	1.54	40°06'05.248"N	104°33'41.664"W	0.39	First MWD Surface Survey
326.00	2.280	43.300	325.96	-1.56	2.12	3.44	40°06'05.263"N	104°33'41.640"W	1.70	
419.00	3.110	46.910	418.85	-4.10	5.19	6.55	40°06'05.293"N	104°33'41.600"W	0.91	
512.00	3.410	50.750	511.70	-6.90	8.67	10.54	40°06'05.328"N	104°33'41.548"W	0.40	
604.00	4.730	54.510	603.47	-9.97	12.60	15.75	40°06'05.367"N	104°33'41.481"W	1.46	
697.00	6.630	47.500	696.01	-14.64	18.45	22.83	40°06'05.424"N	104°33'41.390"W	2.17	
789.00	9.260	48.810	787.12	-21.51	26.92	32.31	40°06'05.508"N	104°33'41.268"W	2.87	
882.00	11.650	49.610	878.57	-30.38	37.93	45.10	40°06'05.617"N	104°33'41.104"W	2.57	
974.00	12.690	48.640	968.50	-40.62	50.63	59.76	40°06'05.742"N	104°33'40.915"W	1.15	
1063.00	12.210	48.290	1055.40	-50.92	63.35	74.12	40°06'05.868"N	104°33'40.730"W	0.55	
1152.00	10.780	46.550	1142.62	-60.71	75.34	87.19	40°06'05.987"N	104°33'40.562"W	1.65	
1241.00	11.680	46.370	1229.91	-70.53	87.28	99.75	40°06'06.104"N	104°33'40.400"W	1.01	
1330.00	13.100	48.280	1316.84	-81.09	100.21	113.80	40°06'06.232"N	104°33'40.219"W	1.66	
1418.00	13.740	49.240	1402.43	-91.97	113.67	129.16	40°06'06.365"N	104°33'40.022"W	0.77	
1507.00	13.690	48.620	1488.90	-103.16	127.53	145.07	40°06'06.502"N	104°33'39.817"W	0.17	
1596.00	13.390	49.930	1575.42	-114.11	141.13	160.86	40°06'06.637"N	104°33'39.614"W	0.48	
1668.00	13.170	49.390	1645.50	-122.70	151.83	173.47	40°06'06.742"N	104°33'39.452"W	0.35	
1778.00	13.070	48.060	1752.63	-136.02	168.30	192.23	40°06'06.905"N	104°33'39.210"W	0.29	
1868.00	12.840	47.110	1840.34	-147.12	181.91	207.13	40°06'07.040"N	104°33'39.019"W	0.35	
1957.00	12.840	46.640	1927.11	-158.21	195.43	221.56	40°06'07.173"N	104°33'38.833"W	0.12	
2045.00	12.840	45.890	2012.91	-169.34	208.95	235.69	40°06'07.307"N	104°33'38.651"W	0.19	
2134.00	12.360	44.670	2099.77	-180.66	222.61	249.49	40°06'07.442"N	104°33'38.473"W	0.62	
2223.00	12.450	47.520	2186.69	-191.59	235.86	263.26	40°06'07.573"N	104°33'38.296"W	0.70	
2312.00	12.460	51.280	2273.60	-201.63	248.34	277.83	40°06'07.696"N	104°33'38.109"W	0.91	
2401.00	12.060	57.470	2360.57	-210.09	259.35	293.16	40°06'07.805"N	104°33'37.911"W	1.54	
2490.00	12.450	63.530	2447.55	-216.67	268.63	309.59	40°06'07.897"N	104°33'37.700"W	1.51	
2578.00	12.480	68.070	2533.47	-221.64	276.41	326.90	40°06'07.973"N	104°33'37.477"W	1.11	
2667.00	12.490	64.590	2620.37	-226.49	284.13	344.51	40°06'08.050"N	104°33'37.250"W	0.85	



Actual Wellpath Report

JACKSON 33-6H AWP

Page 3 of 8



REFERENCE WELLPATH IDENTIFICATION			
Operator	VERDAD OIL & GAS CORPORATION	Slot	SLOT#01 JACKSON 33-6H (283'FNL&1081'FWL,SEC.33)
Area	COLORADO	Well	JACKSON 33-6H
Field	WELD COUNTY (NAD83/TN)	Wellbore	JACKSON 33-6H AWB
Facility	SEC.33-T02N-R64W		

WELLPATH DATA (144 stations)										
MD [ft]	Inclination [°]	Azimuth [°]	TVD [ft]	Vert Sect [ft]	North [ft]	East [ft]	Latitude	Longitude	DLS [°/100ft]	Comments
2756.00	12.360	67.720	2707.29	-231.39	291.87	362.02	40°06'08.126"N	104°33'37.025"W	0.77	
2845.00	12.450	70.170	2794.21	-235.37	298.73	379.86	40°06'08.194"N	104°33'36.796"W	0.60	
2934.00	11.810	75.810	2881.23	-237.98	304.22	397.72	40°06'08.248"N	104°33'36.566"W	1.51	
3022.00	12.470	74.840	2967.26	-239.81	308.91	415.62	40°06'08.295"N	104°33'36.335"W	0.78	
3111.00	12.640	58.610	3054.16	-244.54	316.50	433.21	40°06'08.370"N	104°33'36.109"W	3.96	
3200.00	12.690	43.610	3141.01	-254.17	328.65	448.27	40°06'08.490"N	104°33'35.915"W	3.69	
3289.00	12.760	39.950	3227.83	-266.56	343.27	461.32	40°06'08.634"N	104°33'35.747"W	0.91	
3378.00	12.730	36.590	3314.64	-279.86	358.67	473.48	40°06'08.786"N	104°33'35.591"W	0.83	
3467.00	12.590	35.490	3401.47	-293.64	374.45	484.96	40°06'08.942"N	104°33'35.443"W	0.31	
3644.00	9.090	29.260	3575.30	-318.37	402.36	503.00	40°06'09.218"N	104°33'35.211"W	2.08	
3733.00	12.180	45.380	3662.77	-329.36	415.09	513.12	40°06'09.344"N	104°33'35.081"W	4.79	
3822.00	13.470	52.810	3749.56	-339.71	427.96	528.06	40°06'09.471"N	104°33'34.888"W	2.35	
3911.00	13.540	52.260	3836.10	-349.61	440.60	544.56	40°06'09.596"N	104°33'34.676"W	0.16	
4000.00	13.560	51.110	3922.62	-359.80	453.53	560.92	40°06'09.724"N	104°33'34.466"W	0.30	
4088.00	13.670	48.370	4008.15	-370.54	466.91	576.72	40°06'09.856"N	104°33'34.262"W	0.74	
4177.00	13.430	42.790	4094.68	-382.60	481.48	591.60	40°06'10.000"N	104°33'34.071"W	1.49	
4266.00	13.740	35.000	4181.19	-396.58	497.73	604.69	40°06'10.161"N	104°33'33.902"W	2.08	
4355.00	13.600	34.840	4267.67	-411.72	514.97	616.73	40°06'10.331"N	104°33'33.747"W	0.16	
4443.00	13.680	35.360	4353.19	-426.62	531.95	628.66	40°06'10.499"N	104°33'33.594"W	0.17	
4532.00	13.490	36.780	4439.70	-441.37	548.85	640.97	40°06'10.666"N	104°33'33.435"W	0.43	
4621.00	13.690	37.920	4526.21	-455.80	565.47	653.65	40°06'10.830"N	104°33'33.272"W	0.38	
4710.00	13.510	41.940	4612.71	-469.53	581.51	667.07	40°06'10.989"N	104°33'33.099"W	1.08	
4799.00	13.580	38.670	4699.24	-483.11	597.40	680.55	40°06'11.146"N	104°33'32.926"W	0.86	
4888.00	13.350	38.200	4785.79	-497.12	613.64	693.43	40°06'11.306"N	104°33'32.760"W	0.29	
4977.00	12.850	49.090	4872.49	-509.32	628.19	707.27	40°06'11.450"N	104°33'32.582"W	2.83	
5066.00	11.890	56.050	4959.43	-518.41	639.80	722.36	40°06'11.564"N	104°33'32.388"W	1.99	
5155.00	11.870	55.840	5046.52	-526.16	650.06	737.54	40°06'11.666"N	104°33'32.193"W	0.05	
5244.00	11.920	59.360	5133.61	-533.43	659.88	753.02	40°06'11.763"N	104°33'31.993"W	0.82	
5333.00	11.480	56.140	5220.76	-540.53	669.50	768.28	40°06'11.858"N	104°33'31.797"W	0.88	
5421.00	11.340	50.690	5307.03	-548.57	679.86	782.25	40°06'11.960"N	104°33'31.617"W	1.24	



Actual Wellpath Report

JACKSON 33-6H AWP

Page 4 of 8



REFERENCE WELLPATH IDENTIFICATION			
Operator	VERDAD OIL & GAS CORPORATION	Slot	SLOT#01 JACKSON 33-6H (283'FNL&1081'FWL,SEC.33)
Area	COLORADO	Well	JACKSON 33-6H
Field	WELD COUNTY (NAD83/TN)	Wellbore	JACKSON 33-6H AWB
Facility	SEC.33-T02N-R64W		

WELLPATH DATA (144 stations) † = interpolated/extrapolated station										
MD [ft]	Inclination [°]	Azimuth [°]	TVD [ft]	Vert Sect [ft]	North [ft]	East [ft]	Latitude	Longitude	DLS [°/100ft]	Comments
5510.00	10.190	46.390	5394.46	-557.45	690.83	794.72	40°06'12.069"N	104°33'31.457"W	1.58	
5599.00	8.190	40.550	5482.32	-566.03	701.08	804.54	40°06'12.170"N	104°33'31.330"W	2.48	
5687.00	6.260	36.490	5569.61	-573.45	709.70	811.47	40°06'12.255"N	104°33'31.241"W	2.27	
5776.00	6.270	38.050	5658.08	-580.16	717.43	817.35	40°06'12.332"N	104°33'31.165"W	0.19	
5865.00	6.480	47.760	5746.53	-586.22	724.63	824.06	40°06'12.403"N	104°33'31.079"W	1.23	
5953.00	4.910	39.420	5834.10	-591.44	730.88	830.13	40°06'12.465"N	104°33'31.001"W	2.01	
6042.00	2.690	28.130	5922.90	-595.63	735.67	833.54	40°06'12.512"N	104°33'30.957"W	2.62	
6131.00	0.030	280.070	6011.87	-597.30	737.51	834.50	40°06'12.530"N	104°33'30.945"W	3.03	
6220.00	0.030	83.680	6100.87	-597.31	737.52	834.50	40°06'12.530"N	104°33'30.945"W	0.07	
6309.00	0.070	101.130	6189.87	-597.29	737.51	834.58	40°06'12.530"N	104°33'30.944"W	0.05	
6398.00	0.060	177.160	6278.87	-597.22	737.46	834.63	40°06'12.530"N	104°33'30.943"W	0.09	
6486.00	0.100	11.160	6366.87	-597.25	737.48	834.65	40°06'12.530"N	104°33'30.943"W	0.18	
6575.00	2.340	181.430	6455.84	-595.54	735.74	834.62	40°06'12.513"N	104°33'30.943"W	2.74	
6664.00	9.910	189.250	6544.27	-586.46	726.36	833.34	40°06'12.420"N	104°33'30.960"W	8.54	
6753.00	15.880	184.450	6630.99	-567.33	706.64	831.16	40°06'12.225"N	104°33'30.988"W	6.81	
6842.00	22.370	177.740	6715.04	-538.64	677.54	830.88	40°06'11.937"N	104°33'30.991"W	7.69	
6931.00	31.600	177.120	6794.27	-498.55	637.24	832.73	40°06'11.539"N	104°33'30.968"W	10.38	
7020.00	39.400	180.880	6866.68	-447.46	585.63	833.47	40°06'11.029"N	104°33'30.958"W	9.10	
7108.00	47.530	178.820	6930.50	-387.70	525.15	833.71	40°06'10.431"N	104°33'30.955"W	9.38	
7197.00	56.380	175.260	6985.30	-318.08	455.25	837.45	40°06'09.741"N	104°33'30.907"W	10.43	
7286.00	66.810	173.700	7027.58	-240.05	377.44	845.03	40°06'08.972"N	104°33'30.809"W	11.82	
7375.00	73.840	176.310	7057.53	-156.51	294.01	852.27	40°06'08.147"N	104°33'30.716"W	8.37	
7400.00†	76.380	177.672	7063.96	-132.49	269.89	853.54	40°06'07.909"N	104°33'30.700"W	11.44	Cross Section Line(0'FNL&1934'FWL,SEC.33)
7463.00	82.810	180.990	7075.33	-71.23	207.97	854.25	40°06'07.297"N	104°33'30.691"W	11.44	
7552.00	89.970	183.240	7080.93	15.85	119.27	850.96	40°06'06.421"N	104°33'30.733"W	8.43	
7641.00	91.080	180.710	7080.12	103.20	30.34	847.90	40°06'05.542"N	104°33'30.773"W	3.10	
7729.00	91.170	175.030	7078.39	190.51	-57.55	851.16	40°06'04.673"N	104°33'30.731"W	6.45	
7818.00	90.180	173.600	7077.34	279.35	-146.10	859.98	40°06'03.798"N	104°33'30.617"W	1.95	
7907.00	90.250	176.750	7077.01	368.10	-234.77	867.47	40°06'02.922"N	104°33'30.521"W	3.54	
7996.00	90.150	179.550	7076.69	456.39	-323.72	870.34	40°06'02.043"N	104°33'30.484"W	3.15	



Actual Wellpath Report

JACKSON 33-6H AWP



REFERENCE WELLPATH IDENTIFICATION			
Operator	VERDAD OIL & GAS CORPORATION	Slot	SLOT#01 JACKSON 33-6H (283'FNL&1081'FWL,SEC.33)
Area	COLORADO	Well	JACKSON 33-6H
Field	WELD COUNTY (NAD83/TN)	Wellbore	JACKSON 33-6H AWB
Facility	SEC.33-T02N-R64W		

WELLPATH DATA (144 stations)										
MD [ft]	Inclination [°]	Azimuth [°]	TVD [ft]	Vert Sect [ft]	North [ft]	East [ft]	Latitude	Longitude	DLS [°/100ft]	Comments
8085.00	90.220	180.470	7076.41	544.28	-412.72	870.32	40°06'01.163"N	104°33'30.484"W	1.04	
8174.00	90.090	180.150	7076.17	632.10	-501.72	869.84	40°06'00.284"N	104°33'30.491"W	0.39	
8262.00	90.340	179.440	7075.84	719.05	-589.71	870.16	40°05'59.414"N	104°33'30.486"W	0.86	
8351.00	90.060	179.250	7075.53	807.10	-678.71	871.17	40°05'58.535"N	104°33'30.473"W	0.38	
8440.00	90.860	180.920	7074.81	894.97	-767.70	871.04	40°05'57.655"N	104°33'30.475"W	2.08	
8529.00	90.680	183.960	7073.61	982.17	-856.60	867.25	40°05'56.777"N	104°33'30.524"W	3.42	
8617.00	91.320	185.590	7072.08	1067.61	-944.28	859.93	40°05'55.910"N	104°33'30.618"W	1.99	
8706.00	91.290	185.320	7070.05	1153.76	-1032.85	851.47	40°05'55.035"N	104°33'30.727"W	0.31	
8795.00	91.390	184.920	7067.97	1240.03	-1121.47	843.53	40°05'54.159"N	104°33'30.829"W	0.46	
8884.00	90.220	183.570	7066.72	1326.64	-1210.22	836.94	40°05'53.282"N	104°33'30.914"W	2.01	
8973.00	90.520	181.330	7066.14	1413.85	-1299.13	833.14	40°05'52.404"N	104°33'30.963"W	2.54	
9062.00	90.580	181.930	7065.29	1501.31	-1388.09	830.61	40°05'51.525"N	104°33'30.996"W	0.68	
9151.00	89.940	181.470	7064.89	1588.75	-1477.05	827.97	40°05'50.645"N	104°33'31.030"W	0.89	
9240.00	89.970	180.310	7064.96	1676.42	-1566.03	826.59	40°05'49.766"N	104°33'31.048"W	1.30	
9329.00	90.090	179.390	7064.91	1764.35	-1655.03	826.82	40°05'48.887"N	104°33'31.045"W	1.04	
9418.00	90.220	178.520	7064.67	1852.48	-1744.02	828.44	40°05'48.007"N	104°33'31.024"W	0.99	
9506.00	90.150	178.580	7064.39	1939.71	-1831.99	830.67	40°05'47.138"N	104°33'30.995"W	0.10	
9595.00	90.000	179.060	7064.27	2027.88	-1920.97	832.50	40°05'46.259"N	104°33'30.972"W	0.57	
9684.00	90.030	179.260	7064.25	2115.97	-2009.96	833.81	40°05'45.379"N	104°33'30.955"W	0.23	
9773.00	90.400	179.580	7063.91	2204.00	-2098.95	834.71	40°05'44.500"N	104°33'30.943"W	0.55	
9862.00	90.220	178.970	7063.43	2292.06	-2187.94	835.83	40°05'43.620"N	104°33'30.929"W	0.71	
9951.00	90.370	180.490	7062.97	2380.02	-2276.94	836.25	40°05'42.741"N	104°33'30.924"W	1.72	
10039.00	90.220	182.040	7062.52	2466.60	-2364.91	834.31	40°05'41.871"N	104°33'30.949"W	1.77	
10129.00	90.340	181.580	7062.08	2554.99	-2454.87	831.47	40°05'40.982"N	104°33'30.985"W	0.53	
10217.00	90.400	181.960	7061.51	2641.43	-2542.82	828.75	40°05'40.113"N	104°33'31.020"W	0.44	
10306.00	90.340	183.400	7060.94	2728.57	-2631.72	824.59	40°05'39.235"N	104°33'31.074"W	1.62	
10395.00	90.370	183.440	7060.38	2815.47	-2720.56	819.28	40°05'38.357"N	104°33'31.142"W	0.06	
10484.00	90.250	182.060	7059.90	2902.59	-2809.46	815.01	40°05'37.478"N	104°33'31.197"W	1.56	
10573.00	90.030	179.030	7059.69	2990.34	-2898.44	814.16	40°05'36.599"N	104°33'31.208"W	3.41	
10662.00	90.120	178.000	7059.57	3078.57	-2987.41	816.47	40°05'35.720"N	104°33'31.178"W	1.16	





Actual Wellpath Report

JACKSON 33-6H AWP



REFERENCE WELLPATH IDENTIFICATION			
Operator	VERDAD OIL & GAS CORPORATION	Slot	SLOT#01 JACKSON 33-6H (283'FNL&1081'FWL,SEC.33)
Area	COLORADO	Well	JACKSON 33-6H
Field	WELD COUNTY (NAD83/TN)	Wellbore	JACKSON 33-6H AWB
Facility	SEC.33-T02N-R64W		

WELLPATH DATA (144 stations)										
MD [ft]	Inclination [°]	Azimuth [°]	TVD [ft]	Vert Sect [ft]	North [ft]	East [ft]	Latitude	Longitude	DLS [°/100ft]	Comments
10751.00	90.150	178.670	7059.36	3166.83	-3076.37	819.05	40°05'34.841"N	104°33'31.145"W	0.75	
10839.00	90.430	183.090	7058.91	3253.49	-3164.34	817.70	40°05'33.971"N	104°33'31.163"W	5.03	
10928.00	90.120	183.730	7058.49	3340.40	-3253.18	812.41	40°05'33.093"N	104°33'31.231"W	0.80	
11017.00	90.460	183.580	7058.04	3427.22	-3342.00	806.74	40°05'32.216"N	104°33'31.304"W	0.42	
11106.00	90.280	181.910	7057.46	3514.34	-3430.89	802.47	40°05'31.337"N	104°33'31.359"W	1.89	
11195.00	90.250	179.900	7057.05	3602.00	-3519.87	801.07	40°05'30.458"N	104°33'31.377"W	2.26	
11284.00	90.060	178.380	7056.81	3690.10	-3608.86	802.40	40°05'29.579"N	104°33'31.360"W	1.72	
11373.00	90.250	178.840	7056.57	3778.30	-3697.83	804.56	40°05'28.699"N	104°33'31.332"W	0.56	
11462.00	90.090	178.810	7056.30	3866.47	-3786.81	806.39	40°05'27.820"N	104°33'31.308"W	0.18	
11551.00	90.280	178.270	7056.02	3954.69	-3875.79	808.66	40°05'26.941"N	104°33'31.279"W	0.64	
11639.00	90.120	179.380	7055.71	4041.86	-3963.76	810.46	40°05'26.071"N	104°33'31.256"W	1.27	
11728.00	90.370	180.600	7055.33	4129.76	-4052.76	810.48	40°05'25.192"N	104°33'31.256"W	1.40	
11817.00	89.010	180.640	7055.81	4217.49	-4141.75	809.51	40°05'24.312"N	104°33'31.268"W	1.53	
11906.00	88.890	181.050	7057.44	4305.16	-4230.73	808.20	40°05'23.433"N	104°33'31.285"W	0.48	
11995.00	88.830	180.960	7059.21	4392.78	-4319.70	806.64	40°05'22.554"N	104°33'31.305"W	0.12	
12084.00	88.950	184.750	7060.94	4479.83	-4408.55	802.21	40°05'21.676"N	104°33'31.362"W	4.26	
12172.00	89.970	182.540	7061.77	4565.68	-4496.37	796.61	40°05'20.808"N	104°33'31.434"W	2.77	
12261.00	90.280	180.810	7061.57	4653.12	-4585.32	794.01	40°05'19.929"N	104°33'31.468"W	1.97	
12350.00	88.950	179.720	7062.17	4740.95	-4674.32	793.60	40°05'19.050"N	104°33'31.473"W	1.93	
12439.00	88.890	179.540	7063.85	4828.92	-4763.30	794.18	40°05'18.170"N	104°33'31.466"W	0.21	
12528.00	88.740	179.370	7065.69	4916.92	-4852.28	795.02	40°05'17.291"N	104°33'31.455"W	0.25	
12616.00	88.980	179.260	7067.44	5003.97	-4940.25	796.07	40°05'16.422"N	104°33'31.442"W	0.30	
12665.00	88.860	179.010	7068.36	5052.46	-4989.24	796.81	40°05'15.937"N	104°33'31.432"W	0.57	Last BHI Survey
12689.00	88.860	179.010	7068.84	5076.22	-5013.23	797.23	40°05'15.700"N	104°33'31.427"W	0.00	Projection to Bit



Actual Wellpath Report

JACKSON 33-6H AWP



REFERENCE WELLPATH IDENTIFICATION

Operator	VERDAD OIL & GAS CORPORATION	Slot	SLOT#01 JACKSON 33-6H (283'FNL&1081'FWL,SEC.33)
Area	COLORADO	Well	JACKSON 33-6H
Field	WELD COUNTY (NAD83/TN)	Wellbore	JACKSON 33-6H AWB
Facility	SEC.33-T02N-R64W		

HOLE & CASING SECTIONS - Ref Wellbore: JACKSON 33-6H AWB      Ref Wellpath: JACKSON 33-6H AWP

String/Diameter	Start MD [ft]	End MD [ft]	Interval [ft]	Start TVD [ft]	End TVD [ft]	Start N/S [ft]	Start E/W [ft]	End N/S [ft]	End E/W [ft]
13.5in Open Hole	16.00	1718.00	1702.00	16.00	1694.19	0.00	0.00	159.28	182.06
9.625in Casing Surface	16.00	1718.00	1702.00	16.00	1694.19	0.00	0.00	159.28	182.06
8.5in Open Hole	1718.00	12689.00	10971.00	1694.19	7068.84	159.28	182.06	-5013.23	797.23
5.5in Casing Production	16.00	12689.00	12673.00	16.00	7068.84	0.00	0.00	-5013.23	797.23

WELLPATH COMPOSITION - Ref Wellbore: JACKSON 33-6H AWB      Ref Wellpath: JACKSON 33-6H AWP

Start MD [ft]	End MD [ft]	Positional Uncertainty Model	Log Name/Comment	Wellbore
16.00	1668.00	Custom BHI NaviTrak (Standard Rotating+Axial Corr) (Rockies 0.03Gt model)	Surface Surveys BHI NaviTrak (Rotating+Axial Corr) <16-1668'>	JACKSON 33-6H AWB
1668.00	12665.00	Custom BHI AutoTrak Curve (Axial Corr, Short spacing) (Rockies 0.03Gt model)	BHI/ATC 8.5" Hole Surveys <1778'-12665'>	JACKSON 33-6H AWB
12665.00	12689.00	Blind Drilling (std)	Projection to bit	JACKSON 33-6H AWB





# Actual Wellpath Report

JACKSON 33-6H AWP



REFERENCE WELLPATH IDENTIFICATION

Operator	VERDAD OIL & GAS CORPORATION	Slot	SLOT#01 JACKSON 33-6H (283'FNL&1081'FWL,SEC.33)
Area	COLORADO	Well	JACKSON 33-6H
Field	WELD COUNTY (NAD83/TN)	Wellbore	JACKSON 33-6H AWB
Facility	SEC.33-T02N-R64W		

WELLPATH COMMENTS

MD [ft]	Inclination [°]	Azimuth [°]	TVD [ft]	Comment
234.00	0.860	70.090	233.99	First MWD Surface Survey
7400.00	76.380	177.672	7063.96	Cross Section Line(0'FNL&1934'FWL,SEC.33)
12665.00	88.860	179.010	7068.36	Last BHI Survey
12689.00	88.860	179.010	7068.84	Projection to Bit