

US ROCKIES WATTENBERG PLANNING

WELD-NAD83-UTMFT13N

2N-67W-35 BAJA BERG 14-35HZ PAD

BAJA BERG 35-8HZ

Plan A

Plan: Permit Rev-1

SHL Lat/Long: 40.090535/-104.858917

Survey Program: MWD+IFR+MSA

Standard Planning Report

02 February, 2018

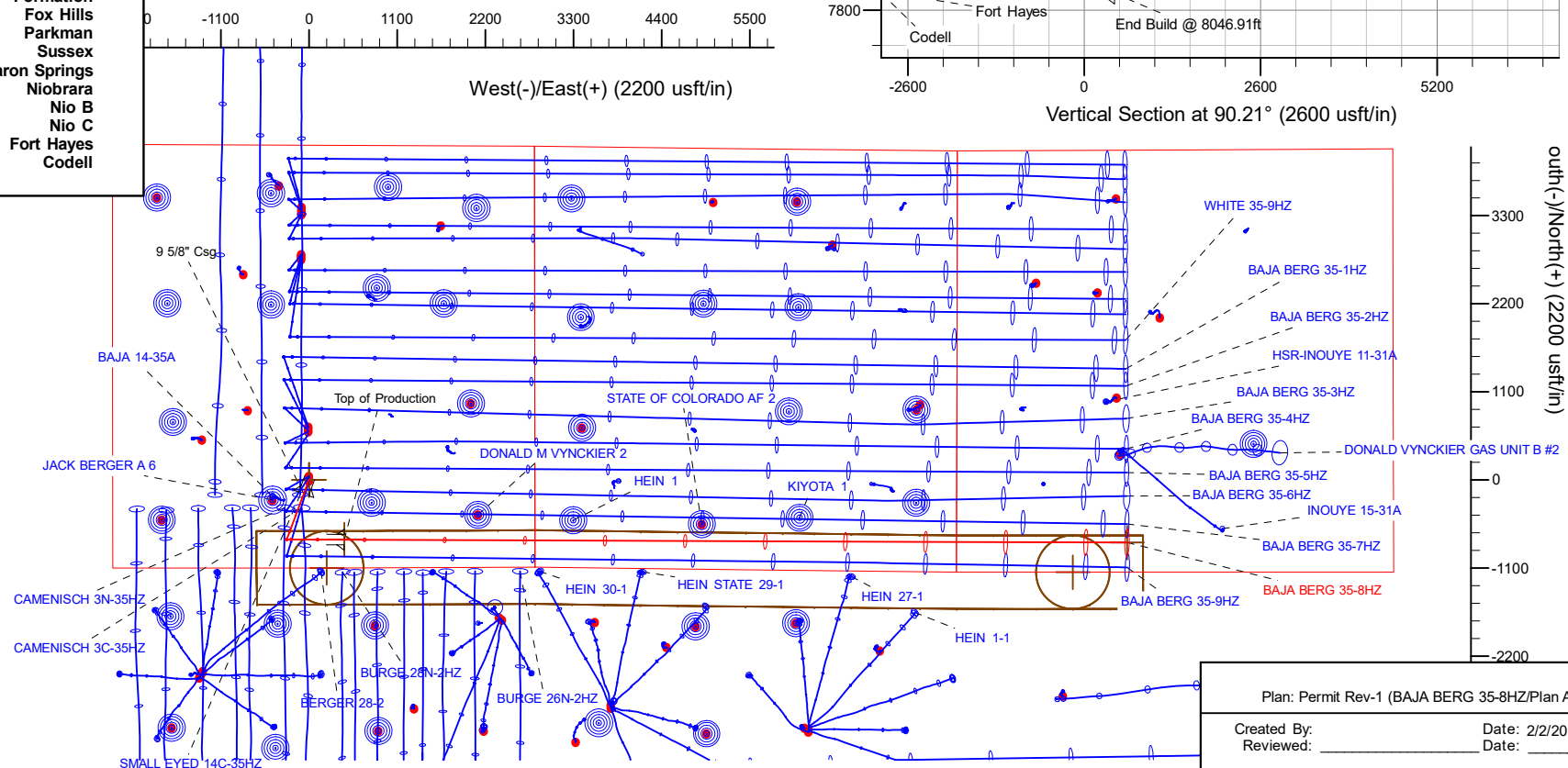
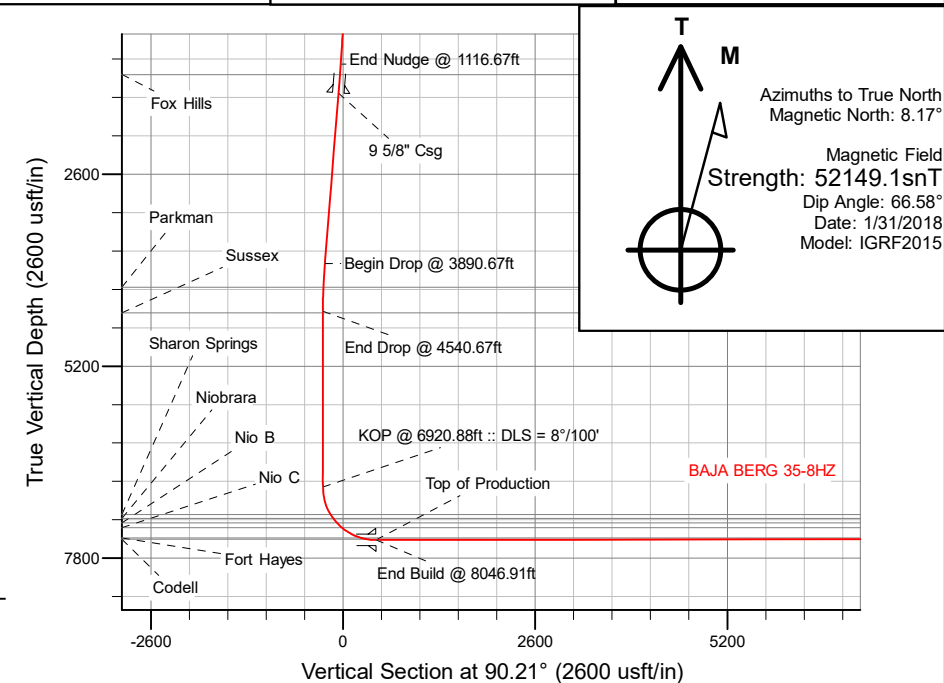
US ROCKIES WATTENBERG PLANNING

CASING DETAILS			WELL DETAILS: Baja Berg 35-8HZ GL = 4934' RKB = 17' @ 4951.00usft (Drilling Rig)
TVD	MD	Size	
1500.00	1517.70	9-5/8	
7553.00	8046.91	5-1/2	

SECTION DETAILS										
Sec	MD	Inc	Azi	TVD	+N/-S	+E/-W	Dleg	TFace	VSect	Target
1	0.00	0.00	0.00	0.00	0.00	0.00	0.00	0.00	0.00	
2	250.00	0.00	0.00	250.00	0.00	0.00	0.00	0.00	0.00	
3	1116.67	13.00	200.40	1109.25	-91.76	-34.12	1.50	200.40	-33.79	
4	3890.67	13.00	200.40	3812.16	-676.64	-251.64	0.00	0.00	-249.16	
5	4540.67	0.00	0.00	4456.59	-745.46	-277.23	2.00	180.00	-274.50	
6	6920.88	0.00	0.00	6836.80	-745.46	-277.23	0.00	0.00	-274.50	
7	8046.91	90.08	90.21	7553.00	-748.14	439.99	8.00	90.21	442.73	
8	17814.90	90.08	90.21	7539.00	-784.66	10207.90	0.00	0.00	10210.70	BAJA BERG 35-8HZ_BHL

WELLBORE TARGET DETAILS (LAT/LONG)					
Name	TVD	+N/-S	+E/-W	Latitude	Longitude
BAJA BERG 35-8HZ_SHL	0.00	0.00	0.00	40.090535	-104.858917
BAJA BERG 35-8HZ_BHL	7539.00	-784.66	10207.90	40.088374	-104.822420

FORMATION TOP DETAILS		
TVDPPath	MDPath	Formation
1249.00	1260.09	Fox Hills
4128.00	4211.35	Parkman
4476.00	4560.08	Sussex
7208.00	7311.10	Sharon Springs
7258.00	7371.16	Niobrara
7320.00	7451.24	Nio B
7388.00	7549.87	Nio C
7523.00	7837.85	Fort Hayes
7544.00	7932.22	Codell



Plan: Permit Rev-1 (BAJA BERG 35-8HZ/Plan A)

Created By:	Date: 2/2/2018
Reviewed:	Date:

Corporate Planning Report

Database:	PLANNING	Local Co-ordinate Reference:	Well BAJA BERG 35-8HZ
Company:	US ROCKIES WATTENBERG PLANNING	TVD Reference:	RKB = 17' @ 4951.00usft (Drilling Rig)
Project:	WELD-NAD83-UTMFT13N	MD Reference:	RKB = 17' @ 4951.00usft (Drilling Rig)
Site:	2N-67W-35 BAJA BERG 14-35HZ PAD	North Reference:	True
Well:	BAJA BERG 35-8HZ	Survey Calculation Method:	Minimum Curvature
Wellbore:	Plan A		
Design:	Permit Rev-1		

Project	WELD-NAD83-UTMFT13N		
Map System:	Universal Transverse Mercator (US Survey Feet)	System Datum:	Mean Sea Level
Geo Datum:	North American Datum 1983		
Map Zone:	Zone 13N (108 W to 102 W)		

Site		2N-67W-35 BAJA BERG 14-35HZ PAD			
Site Position:		Northing:	14,559,777.62 usft	Latitude:	40.090659
From:	Lat/Long	Easting:	1,679,873.96 usft	Longitude:	-104.858920
Position Uncertainty:	0.00 usft	Slot Radius:	13-3/16 "	Grid Convergence:	0.09 °

Well	BAJA BERG 35-8HZ					
Well Position	+N/-S	-45.15 usft	Northing:	14,559,732.47 usft	Latitude:	40.090535
	+E/-W	0.84 usft	Easting:	1,679,874.87 usft	Longitude:	-104.858917
Position Uncertainty		3.28 usft	Wellhead Elevation:		Ground Level:	4,934.00 usft

Wellbore	Plan A				
Magnetics	Model Name	Sample Date	Declination (°)	Dip Angle (°)	Field Strength (nT)
	IGRF2015	1/31/2018	8.17	66.58	52,149.14282287

Design	Permit Rev-1				
Audit Notes:					
Version:		Phase:	PLAN	Tie On Depth:	0.00
Vertical Section:	Depth From (TVD) (usft)	+N/-S (usft)	+E/-W (usft)	Direction (°)	
	0.00	0.00	0.00	90.21	

Plan Survey Tool Program		Date	2/1/2018		
Depth From (usft)	Depth To (usft)	Survey (Wellbore)	Tool Name	Remarks	
1	0.00	1,500.00	Permit Rev-1 (Plan A)	APC_ISCWSA REV 2 MWD+II Fixed:v2:crustal field declinatio	
2	1,500.00	17,814.90	Permit Rev-1 (Plan A)	APC_ISCWSA REV 2 MWD+II Fixed:v2:Rockies, crustal dec +	

Corporate
Planning Report

Database:	PLANNING	Local Co-ordinate Reference:	Well BAJA BERG 35-8HZ
Company:	US ROCKIES WATTENBERG PLANNING	TVD Reference:	RKB = 17' @ 4951.00usft (Drilling Rig)
Project:	WELD-NAD83-UTMFT13N	MD Reference:	RKB = 17' @ 4951.00usft (Drilling Rig)
Site:	2N-67W-35 BAJA BERG 14-35HZ PAD	North Reference:	True
Well:	BAJA BERG 35-8HZ	Survey Calculation Method:	Minimum Curvature
Wellbore:	Plan A		
Design:	Permit Rev-1		

Plan Sections										
Measured Depth (usft)	Inclination (°)	Azimuth (°)	Vertical Depth (usft)	+N/-S (usft)	+E/-W (usft)	Dogleg Rate (°/100usft)	Build Rate (°/100usft)	Turn Rate (°/100usft)	TFO (°)	Target
0.00	0.00	0.00	0.00	0.00	0.00	0.00	0.00	0.00	0.00	
250.00	0.00	0.00	250.00	0.00	0.00	0.00	0.00	0.00	0.00	
1,116.67	13.00	200.40	1,109.25	-91.76	-34.12	1.50	1.50	0.00	200.40	
3,890.67	13.00	200.40	3,812.16	-676.64	-251.64	0.00	0.00	0.00	0.00	
4,540.67	0.00	0.00	4,456.59	-745.46	-277.23	2.00	-2.00	0.00	180.00	
6,920.88	0.00	0.00	6,836.80	-745.46	-277.23	0.00	0.00	0.00	0.00	
8,046.91	90.08	90.21	7,553.00	-748.14	439.99	8.00	8.00	8.01	90.21	
17,814.90	90.08	90.21	7,539.00	-784.66	10,207.90	0.00	0.00	0.00	0.00	BAJA BERG 35-8HZ_

Corporate Planning Report

Database:	PLANNING	Local Co-ordinate Reference:	Well BAJA BERG 35-8HZ
Company:	US ROCKIES WATTENBERG PLANNING	TVD Reference:	RKB = 17' @ 4951.00usft (Drilling Rig)
Project:	WELD-NAD83-UTMFT13N	MD Reference:	RKB = 17' @ 4951.00usft (Drilling Rig)
Site:	2N-67W-35 BAJA BERG 14-35HZ PAD	North Reference:	True
Well:	BAJA BERG 35-8HZ	Survey Calculation Method:	Minimum Curvature
Wellbore:	Plan A		
Design:	Permit Rev-1		

Planned Survey									
Measured Depth (usft)	Inclination (°)	Azimuth (°)	Vertical Depth (usft)	+N/-S (usft)	+E/-W (usft)	Vertical Section (usft)	Dogleg Rate (°/100usft)	Build Rate (°/100usft)	Turn Rate (°/100usft)
0.00	0.00	0.00	0.00	0.00	0.00	0.00	0.00	0.00	0.00
100.00	0.00	0.00	100.00	0.00	0.00	0.00	0.00	0.00	0.00
200.00	0.00	0.00	200.00	0.00	0.00	0.00	0.00	0.00	0.00
250.00	0.00	0.00	250.00	0.00	0.00	0.00	0.00	0.00	0.00
Begin Nudge @ 250.00ft									
300.00	0.75	200.40	300.00	-0.31	-0.11	-0.11	1.50	1.50	0.00
400.00	2.25	200.40	399.96	-2.76	-1.03	-1.02	1.50	1.50	0.00
500.00	3.75	200.40	499.82	-7.67	-2.85	-2.82	1.50	1.50	0.00
600.00	5.25	200.40	599.51	-15.02	-5.59	-5.53	1.50	1.50	0.00
700.00	6.75	200.40	698.96	-24.82	-9.23	-9.14	1.50	1.50	0.00
800.00	8.25	200.40	798.10	-37.05	-13.78	-13.64	1.50	1.50	0.00
900.00	9.75	200.40	896.87	-51.71	-19.23	-19.04	1.50	1.50	0.00
1,000.00	11.25	200.40	995.19	-68.79	-25.58	-25.33	1.50	1.50	0.00
1,100.00	12.75	200.40	1,093.00	-88.28	-32.83	-32.51	1.50	1.50	0.00
1,116.67	13.00	200.40	1,109.25	-91.76	-34.12	-33.79	1.50	1.50	0.00
End Nudge @ 1116.67ft									
1,200.00	13.00	200.40	1,190.45	-109.33	-40.66	-40.26	0.00	0.00	0.00
1,260.09	13.00	200.40	1,249.00	-122.00	-45.37	-44.92	0.00	0.00	0.00
Fox Hills									
1,300.00	13.00	200.40	1,287.88	-130.41	-48.50	-48.02	0.00	0.00	0.00
1,400.00	13.00	200.40	1,385.32	-151.50	-56.34	-55.79	0.00	0.00	0.00
1,500.00	13.00	200.40	1,482.76	-172.58	-64.18	-63.55	0.00	0.00	0.00
1,517.70	13.00	200.40	1,500.00	-176.31	-65.57	-64.92	0.00	0.00	0.00
9 5/8" Csg									
1,600.00	13.00	200.40	1,580.20	-193.67	-72.02	-71.31	0.00	0.00	0.00
1,700.00	13.00	200.40	1,677.63	-214.75	-79.87	-79.08	0.00	0.00	0.00
1,800.00	13.00	200.40	1,775.07	-235.83	-87.71	-86.84	0.00	0.00	0.00
1,900.00	13.00	200.40	1,872.51	-256.92	-95.55	-94.61	0.00	0.00	0.00
2,000.00	13.00	200.40	1,969.94	-278.00	-103.39	-102.37	0.00	0.00	0.00
2,100.00	13.00	200.40	2,067.38	-299.09	-111.23	-110.13	0.00	0.00	0.00
2,200.00	13.00	200.40	2,164.82	-320.17	-119.07	-117.90	0.00	0.00	0.00
2,300.00	13.00	200.40	2,262.25	-341.26	-126.91	-125.66	0.00	0.00	0.00
2,400.00	13.00	200.40	2,359.69	-362.34	-134.75	-133.42	0.00	0.00	0.00
2,500.00	13.00	200.40	2,457.13	-383.42	-142.59	-141.19	0.00	0.00	0.00
2,600.00	13.00	200.40	2,554.57	-404.51	-150.44	-148.95	0.00	0.00	0.00
2,700.00	13.00	200.40	2,652.00	-425.59	-158.28	-156.72	0.00	0.00	0.00
2,800.00	13.00	200.40	2,749.44	-446.68	-166.12	-164.48	0.00	0.00	0.00
2,900.00	13.00	200.40	2,846.88	-467.76	-173.96	-172.24	0.00	0.00	0.00
3,000.00	13.00	200.40	2,944.31	-488.85	-181.80	-180.01	0.00	0.00	0.00
3,100.00	13.00	200.40	3,041.75	-509.93	-189.64	-187.77	0.00	0.00	0.00
3,200.00	13.00	200.40	3,139.19	-531.01	-197.48	-195.53	0.00	0.00	0.00
3,300.00	13.00	200.40	3,236.62	-552.10	-205.32	-203.30	0.00	0.00	0.00
3,400.00	13.00	200.40	3,334.06	-573.18	-213.16	-211.06	0.00	0.00	0.00
3,500.00	13.00	200.40	3,431.50	-594.27	-221.01	-218.83	0.00	0.00	0.00
3,600.00	13.00	200.40	3,528.94	-615.35	-228.85	-226.59	0.00	0.00	0.00
3,700.00	13.00	200.40	3,626.37	-636.44	-236.69	-234.35	0.00	0.00	0.00
3,800.00	13.00	200.40	3,723.81	-657.52	-244.53	-242.12	0.00	0.00	0.00
3,890.67	13.00	200.40	3,812.16	-676.64	-251.64	-249.16	0.00	0.00	0.00
Begin Drop @ 3890.67ft									
3,900.00	12.81	200.40	3,821.25	-678.59	-252.37	-249.88	2.00	-2.00	0.00
4,000.00	10.81	200.40	3,919.13	-697.78	-259.50	-256.94	2.00	-2.00	0.00
4,100.00	8.81	200.40	4,017.66	-713.75	-265.44	-262.82	2.00	-2.00	0.00
4,200.00	6.81	200.40	4,116.73	-726.49	-270.18	-267.52	2.00	-2.00	0.00
4,211.35	6.59	200.40	4,128.00	-727.73	-270.64	-267.97	2.00	-2.00	0.00

Corporate Planning Report

Database:	PLANNING	Local Co-ordinate Reference:	Well BAJA BERG 35-8HZ
Company:	US ROCKIES WATTENBERG PLANNING	TVD Reference:	RKB = 17' @ 4951.00usft (Drilling Rig)
Project:	WELD-NAD83-UTMFT13N	MD Reference:	RKB = 17' @ 4951.00usft (Drilling Rig)
Site:	2N-67W-35 BAJA BERG 14-35HZ PAD	North Reference:	True
Well:	BAJA BERG 35-8HZ	Survey Calculation Method:	Minimum Curvature
Wellbore:	Plan A		
Design:	Permit Rev-1		

Planned Survey									
Measured Depth (usft)	Inclination (°)	Azimuth (°)	Vertical Depth (usft)	+N/-S (usft)	+E/-W (usft)	Vertical Section (usft)	Dogleg Rate (°/100usft)	Build Rate (°/100usft)	Turn Rate (°/100usft)
Parkman									
4,300.00	4.81	200.40	4,216.21	-735.99	-273.71	-271.01	2.00	-2.00	0.00
4,400.00	2.81	200.40	4,315.98	-742.22	-276.03	-273.31	2.00	-2.00	0.00
4,500.00	0.81	200.40	4,415.92	-745.19	-277.13	-274.40	2.00	-2.00	0.00
4,540.67	0.00	0.00	4,456.59	-745.46	-277.23	-274.50	2.00	-2.00	0.00
End Drop @ 4540.67ft									
4,560.08	0.00	0.00	4,476.00	-745.46	-277.23	-274.50	0.00	0.00	0.00
Sussex									
4,600.00	0.00	0.00	4,515.92	-745.46	-277.23	-274.50	0.00	0.00	0.00
4,700.00	0.00	0.00	4,615.92	-745.46	-277.23	-274.50	0.00	0.00	0.00
4,800.00	0.00	0.00	4,715.92	-745.46	-277.23	-274.50	0.00	0.00	0.00
4,900.00	0.00	0.00	4,815.92	-745.46	-277.23	-274.50	0.00	0.00	0.00
5,000.00	0.00	0.00	4,915.92	-745.46	-277.23	-274.50	0.00	0.00	0.00
5,100.00	0.00	0.00	5,015.92	-745.46	-277.23	-274.50	0.00	0.00	0.00
5,200.00	0.00	0.00	5,115.92	-745.46	-277.23	-274.50	0.00	0.00	0.00
5,300.00	0.00	0.00	5,215.92	-745.46	-277.23	-274.50	0.00	0.00	0.00
5,400.00	0.00	0.00	5,315.92	-745.46	-277.23	-274.50	0.00	0.00	0.00
5,500.00	0.00	0.00	5,415.92	-745.46	-277.23	-274.50	0.00	0.00	0.00
5,600.00	0.00	0.00	5,515.92	-745.46	-277.23	-274.50	0.00	0.00	0.00
5,700.00	0.00	0.00	5,615.92	-745.46	-277.23	-274.50	0.00	0.00	0.00
5,800.00	0.00	0.00	5,715.92	-745.46	-277.23	-274.50	0.00	0.00	0.00
5,900.00	0.00	0.00	5,815.92	-745.46	-277.23	-274.50	0.00	0.00	0.00
6,000.00	0.00	0.00	5,915.92	-745.46	-277.23	-274.50	0.00	0.00	0.00
6,100.00	0.00	0.00	6,015.92	-745.46	-277.23	-274.50	0.00	0.00	0.00
6,200.00	0.00	0.00	6,115.92	-745.46	-277.23	-274.50	0.00	0.00	0.00
6,300.00	0.00	0.00	6,215.92	-745.46	-277.23	-274.50	0.00	0.00	0.00
6,400.00	0.00	0.00	6,315.92	-745.46	-277.23	-274.50	0.00	0.00	0.00
6,500.00	0.00	0.00	6,415.92	-745.46	-277.23	-274.50	0.00	0.00	0.00
6,600.00	0.00	0.00	6,515.92	-745.46	-277.23	-274.50	0.00	0.00	0.00
6,700.00	0.00	0.00	6,615.92	-745.46	-277.23	-274.50	0.00	0.00	0.00
6,800.00	0.00	0.00	6,715.92	-745.46	-277.23	-274.50	0.00	0.00	0.00
6,900.00	0.00	0.00	6,815.92	-745.46	-277.23	-274.50	0.00	0.00	0.00
6,920.88	0.00	0.00	6,836.80	-745.46	-277.23	-274.50	0.00	0.00	0.00
KOP @ 6920.88ft :: DLS = 8°/100'									
7,000.00	6.33	90.21	6,915.76	-745.47	-272.87	-270.13	8.00	8.00	0.00
7,100.00	14.33	90.21	7,014.06	-745.54	-254.95	-252.22	8.00	8.00	0.00
7,200.00	22.33	90.21	7,108.91	-745.66	-223.53	-220.79	8.00	8.00	0.00
7,300.00	30.33	90.21	7,198.46	-745.82	-179.21	-176.48	8.00	8.00	0.00
7,311.10	31.22	90.21	7,208.00	-745.84	-173.53	-170.80	8.00	8.00	0.00
Sharon Springs									
7,371.16	36.02	90.21	7,258.00	-745.97	-140.29	-137.55	8.00	8.00	0.00
Niobrara									
7,400.00	38.33	90.21	7,280.98	-746.03	-122.86	-120.13	8.00	8.00	0.00
7,451.24	42.43	90.21	7,320.00	-746.16	-89.68	-86.94	8.00	8.00	0.00
Nio B									
7,500.00	46.33	90.21	7,354.85	-746.29	-55.58	-52.84	8.00	8.00	0.00
7,549.87	50.32	90.21	7,388.00	-746.42	-18.33	-15.60	8.00	8.00	0.00
Nio C									
7,600.00	54.33	90.21	7,418.63	-746.57	21.33	24.07	8.00	8.00	0.00
7,700.00	62.33	90.21	7,471.09	-746.89	106.37	109.11	8.00	8.00	0.00
7,800.00	70.33	90.21	7,511.21	-747.23	197.88	200.62	8.00	8.00	0.00
7,837.85	73.36	90.21	7,523.00	-747.37	233.85	236.58	8.00	8.00	0.00
Fort Hayes									

Corporate Planning Report

Database:	PLANNING	Local Co-ordinate Reference:	Well BAJA BERG 35-8HZ
Company:	US ROCKIES WATTENBERG PLANNING	TVD Reference:	RKB = 17' @ 4951.00usft (Drilling Rig)
Project:	WELD-NAD83-UTMFT13N	MD Reference:	RKB = 17' @ 4951.00usft (Drilling Rig)
Site:	2N-67W-35 BAJA BERG 14-35HZ PAD	North Reference:	True
Well:	BAJA BERG 35-8HZ	Survey Calculation Method:	Minimum Curvature
Wellbore:	Plan A		
Design:	Permit Rev-1		

Planned Survey									
Measured Depth (usft)	Inclination (°)	Azimuth (°)	Vertical Depth (usft)	+N/-S (usft)	+E/-W (usft)	Vertical Section (usft)	Dogleg Rate (°/100usft)	Build Rate (°/100usft)	Turn Rate (°/100usft)
7,900.00	78.33	90.21	7,538.19	-747.59	294.09	296.83	8.00	8.00	0.00
7,932.22	80.91	90.21	7,544.00	-747.71	325.78	328.51	8.00	8.00	0.00
Codell									
8,000.00	86.33	90.21	7,551.53	-747.96	393.11	395.85	8.00	8.00	0.00
8,046.91	90.08	90.21	7,553.00	-748.14	439.99	442.73	8.00	8.00	0.00
End Build @ 8046.91ft - Top of Production									
8,100.00	90.08	90.21	7,552.92	-748.34	493.08	495.82	0.00	0.00	0.00
8,200.00	90.08	90.21	7,552.78	-748.71	593.08	595.82	0.00	0.00	0.00
8,300.00	90.08	90.21	7,552.64	-749.08	693.08	695.82	0.00	0.00	0.00
8,400.00	90.08	90.21	7,552.49	-749.46	793.08	795.82	0.00	0.00	0.00
8,500.00	90.08	90.21	7,552.35	-749.83	893.08	895.82	0.00	0.00	0.00
8,600.00	90.08	90.21	7,552.21	-750.21	993.08	995.82	0.00	0.00	0.00
8,700.00	90.08	90.21	7,552.06	-750.58	1,093.07	1,095.82	0.00	0.00	0.00
8,800.00	90.08	90.21	7,551.92	-750.95	1,193.07	1,195.82	0.00	0.00	0.00
8,900.00	90.08	90.21	7,551.78	-751.33	1,293.07	1,295.82	0.00	0.00	0.00
9,000.00	90.08	90.21	7,551.63	-751.70	1,393.07	1,395.82	0.00	0.00	0.00
9,100.00	90.08	90.21	7,551.49	-752.08	1,493.07	1,495.82	0.00	0.00	0.00
9,200.00	90.08	90.21	7,551.35	-752.45	1,593.07	1,595.82	0.00	0.00	0.00
9,300.00	90.08	90.21	7,551.20	-752.82	1,693.07	1,695.82	0.00	0.00	0.00
9,400.00	90.08	90.21	7,551.06	-753.20	1,793.07	1,795.82	0.00	0.00	0.00
9,500.00	90.08	90.21	7,550.92	-753.57	1,893.07	1,895.82	0.00	0.00	0.00
9,600.00	90.08	90.21	7,550.77	-753.94	1,993.07	1,995.82	0.00	0.00	0.00
9,700.00	90.08	90.21	7,550.63	-754.32	2,093.07	2,095.82	0.00	0.00	0.00
9,800.00	90.08	90.21	7,550.49	-754.69	2,193.07	2,195.82	0.00	0.00	0.00
9,900.00	90.08	90.21	7,550.34	-755.07	2,293.06	2,295.82	0.00	0.00	0.00
10,000.00	90.08	90.21	7,550.20	-755.44	2,393.06	2,395.82	0.00	0.00	0.00
10,100.00	90.08	90.21	7,550.06	-755.81	2,493.06	2,495.82	0.00	0.00	0.00
10,200.00	90.08	90.21	7,549.91	-756.19	2,593.06	2,595.82	0.00	0.00	0.00
10,300.00	90.08	90.21	7,549.77	-756.56	2,693.06	2,695.82	0.00	0.00	0.00
10,400.00	90.08	90.21	7,549.63	-756.94	2,793.06	2,795.82	0.00	0.00	0.00
10,500.00	90.08	90.21	7,549.48	-757.31	2,893.06	2,895.82	0.00	0.00	0.00
10,600.00	90.08	90.21	7,549.34	-757.68	2,993.06	2,995.82	0.00	0.00	0.00
10,700.00	90.08	90.21	7,549.20	-758.06	3,093.06	3,095.82	0.00	0.00	0.00
10,800.00	90.08	90.21	7,549.05	-758.43	3,193.06	3,195.82	0.00	0.00	0.00
10,900.00	90.08	90.21	7,548.91	-758.81	3,293.06	3,295.82	0.00	0.00	0.00
11,000.00	90.08	90.21	7,548.77	-759.18	3,393.06	3,395.82	0.00	0.00	0.00
11,100.00	90.08	90.21	7,548.62	-759.55	3,493.06	3,495.82	0.00	0.00	0.00
11,200.00	90.08	90.21	7,548.48	-759.93	3,593.05	3,595.82	0.00	0.00	0.00
11,300.00	90.08	90.21	7,548.34	-760.30	3,693.05	3,695.82	0.00	0.00	0.00
11,400.00	90.08	90.21	7,548.19	-760.68	3,793.05	3,795.82	0.00	0.00	0.00
11,500.00	90.08	90.21	7,548.05	-761.05	3,893.05	3,895.82	0.00	0.00	0.00
11,600.00	90.08	90.21	7,547.91	-761.42	3,993.05	3,995.82	0.00	0.00	0.00
11,700.00	90.08	90.21	7,547.76	-761.80	4,093.05	4,095.81	0.00	0.00	0.00
11,800.00	90.08	90.21	7,547.62	-762.17	4,193.05	4,195.81	0.00	0.00	0.00
11,900.00	90.08	90.21	7,547.48	-762.54	4,293.05	4,295.81	0.00	0.00	0.00
12,000.00	90.08	90.21	7,547.33	-762.92	4,393.05	4,395.81	0.00	0.00	0.00
12,100.00	90.08	90.21	7,547.19	-763.29	4,493.05	4,495.81	0.00	0.00	0.00
12,200.00	90.08	90.21	7,547.05	-763.67	4,593.05	4,595.81	0.00	0.00	0.00
12,300.00	90.08	90.21	7,546.90	-764.04	4,693.05	4,695.81	0.00	0.00	0.00
12,400.00	90.08	90.21	7,546.76	-764.41	4,793.04	4,795.81	0.00	0.00	0.00
12,500.00	90.08	90.21	7,546.62	-764.79	4,893.04	4,895.81	0.00	0.00	0.00
12,600.00	90.08	90.21	7,546.47	-765.16	4,993.04	4,995.81	0.00	0.00	0.00
12,700.00	90.08	90.21	7,546.33	-765.54	5,093.04	5,095.81	0.00	0.00	0.00
12,800.00	90.08	90.21	7,546.19	-765.91	5,193.04	5,195.81	0.00	0.00	0.00

Corporate Planning Report

Database:	PLANNING	Local Co-ordinate Reference:	Well BAJA BERG 35-8HZ
Company:	US ROCKIES WATTENBERG PLANNING	TVD Reference:	RKB = 17' @ 4951.00usft (Drilling Rig)
Project:	WELD-NAD83-UTMFT13N	MD Reference:	RKB = 17' @ 4951.00usft (Drilling Rig)
Site:	2N-67W-35 BAJA BERG 14-35HZ PAD	North Reference:	True
Well:	BAJA BERG 35-8HZ	Survey Calculation Method:	Minimum Curvature
Wellbore:	Plan A		
Design:	Permit Rev-1		

Planned Survey									
Measured Depth (usft)	Inclination (°)	Azimuth (°)	Vertical Depth (usft)	+N/-S (usft)	+E/-W (usft)	Vertical Section (usft)	Dogleg Rate (°/100usft)	Build Rate (°/100usft)	Turn Rate (°/100usft)
12,900.00	90.08	90.21	7,546.04	-766.28	5,293.04	5,295.81	0.00	0.00	0.00
13,000.00	90.08	90.21	7,545.90	-766.66	5,393.04	5,395.81	0.00	0.00	0.00
13,100.00	90.08	90.21	7,545.76	-767.03	5,493.04	5,495.81	0.00	0.00	0.00
13,200.00	90.08	90.21	7,545.61	-767.41	5,593.04	5,595.81	0.00	0.00	0.00
13,300.00	90.08	90.21	7,545.47	-767.78	5,693.04	5,695.81	0.00	0.00	0.00
13,400.00	90.08	90.21	7,545.33	-768.15	5,793.04	5,795.81	0.00	0.00	0.00
13,500.00	90.08	90.21	7,545.18	-768.53	5,893.04	5,895.81	0.00	0.00	0.00
13,600.00	90.08	90.21	7,545.04	-768.90	5,993.04	5,995.81	0.00	0.00	0.00
13,700.00	90.08	90.21	7,544.90	-769.27	6,093.03	6,095.81	0.00	0.00	0.00
13,800.00	90.08	90.21	7,544.75	-769.65	6,193.03	6,195.81	0.00	0.00	0.00
13,900.00	90.08	90.21	7,544.61	-770.02	6,293.03	6,295.81	0.00	0.00	0.00
14,000.00	90.08	90.21	7,544.47	-770.40	6,393.03	6,395.81	0.00	0.00	0.00
14,100.00	90.08	90.21	7,544.32	-770.77	6,493.03	6,495.81	0.00	0.00	0.00
14,200.00	90.08	90.21	7,544.18	-771.14	6,593.03	6,595.81	0.00	0.00	0.00
14,300.00	90.08	90.21	7,544.04	-771.52	6,693.03	6,695.81	0.00	0.00	0.00
14,400.00	90.08	90.21	7,543.89	-771.89	6,793.03	6,795.81	0.00	0.00	0.00
14,500.00	90.08	90.21	7,543.75	-772.27	6,893.03	6,895.81	0.00	0.00	0.00
14,600.00	90.08	90.21	7,543.61	-772.64	6,993.03	6,995.81	0.00	0.00	0.00
14,700.00	90.08	90.21	7,543.46	-773.01	7,093.03	7,095.81	0.00	0.00	0.00
14,800.00	90.08	90.21	7,543.32	-773.39	7,193.03	7,195.81	0.00	0.00	0.00
14,900.00	90.08	90.21	7,543.18	-773.76	7,293.02	7,295.81	0.00	0.00	0.00
15,000.00	90.08	90.21	7,543.03	-774.14	7,393.02	7,395.81	0.00	0.00	0.00
15,100.00	90.08	90.21	7,542.89	-774.51	7,493.02	7,495.81	0.00	0.00	0.00
15,200.00	90.08	90.21	7,542.75	-774.88	7,593.02	7,595.81	0.00	0.00	0.00
15,300.00	90.08	90.21	7,542.60	-775.26	7,693.02	7,695.81	0.00	0.00	0.00
15,400.00	90.08	90.21	7,542.46	-775.63	7,793.02	7,795.81	0.00	0.00	0.00
15,500.00	90.08	90.21	7,542.32	-776.00	7,893.02	7,895.81	0.00	0.00	0.00
15,600.00	90.08	90.21	7,542.17	-776.38	7,993.02	7,995.81	0.00	0.00	0.00
15,700.00	90.08	90.21	7,542.03	-776.75	8,093.02	8,095.81	0.00	0.00	0.00
15,800.00	90.08	90.21	7,541.89	-777.13	8,193.02	8,195.81	0.00	0.00	0.00
15,900.00	90.08	90.21	7,541.74	-777.50	8,293.02	8,295.81	0.00	0.00	0.00
16,000.00	90.08	90.21	7,541.60	-777.87	8,393.02	8,395.81	0.00	0.00	0.00
16,100.00	90.08	90.21	7,541.46	-778.25	8,493.02	8,495.81	0.00	0.00	0.00
16,200.00	90.08	90.21	7,541.31	-778.62	8,593.01	8,595.81	0.00	0.00	0.00
16,300.00	90.08	90.21	7,541.17	-779.00	8,693.01	8,695.81	0.00	0.00	0.00
16,400.00	90.08	90.21	7,541.03	-779.37	8,793.01	8,795.81	0.00	0.00	0.00
16,500.00	90.08	90.21	7,540.88	-779.74	8,893.01	8,895.81	0.00	0.00	0.00
16,600.00	90.08	90.21	7,540.74	-780.12	8,993.01	8,995.81	0.00	0.00	0.00
16,700.00	90.08	90.21	7,540.60	-780.49	9,093.01	9,095.81	0.00	0.00	0.00
16,800.00	90.08	90.21	7,540.45	-780.87	9,193.01	9,195.81	0.00	0.00	0.00
16,900.00	90.08	90.21	7,540.31	-781.24	9,293.01	9,295.81	0.00	0.00	0.00
17,000.00	90.08	90.21	7,540.17	-781.61	9,393.01	9,395.81	0.00	0.00	0.00
17,100.00	90.08	90.21	7,540.02	-781.99	9,493.01	9,495.81	0.00	0.00	0.00
17,200.00	90.08	90.21	7,539.88	-782.36	9,593.01	9,595.81	0.00	0.00	0.00
17,300.00	90.08	90.21	7,539.74	-782.73	9,693.01	9,695.81	0.00	0.00	0.00
17,400.00	90.08	90.21	7,539.59	-783.11	9,793.00	9,795.81	0.00	0.00	0.00
17,500.00	90.08	90.21	7,539.45	-783.48	9,893.00	9,895.81	0.00	0.00	0.00
17,600.00	90.08	90.21	7,539.31	-783.86	9,993.00	9,995.81	0.00	0.00	0.00
17,700.00	90.08	90.21	7,539.16	-784.23	10,093.00	10,095.81	0.00	0.00	0.00
17,800.00	90.08	90.21	7,539.02	-784.60	10,193.00	10,195.81	0.00	0.00	0.00
17,814.90	90.08	90.21	7,539.00	-784.66	10,207.90	10,210.70	0.00	0.00	0.00
TD Well @ 17814.90ft									

Corporate Planning Report

Database:	PLANNING	Local Co-ordinate Reference:	Well BAJA BERG 35-8HZ
Company:	US ROCKIES WATTENBERG PLANNING	TVD Reference:	RKB = 17' @ 4951.00usft (Drilling Rig)
Project:	WELD-NAD83-UTMFT13N	MD Reference:	RKB = 17' @ 4951.00usft (Drilling Rig)
Site:	2N-67W-35 BAJA BERG 14-35HZ PAD	North Reference:	True
Well:	BAJA BERG 35-8HZ	Survey Calculation Method:	Minimum Curvature
Wellbore:	Plan A		
Design:	Permit Rev-1		

Casing Points					
	Measured Depth (usft)	Vertical Depth (usft)	Name	Casing Diameter (")	Hole Diameter (")
	1,517.70	1,500.00	9 5/8" Csg	9-5/8	13-1/2
	8,046.91	7,553.00	Top of Production	5-1/2	7-7/8

Formations						
	Measured Depth (usft)	Vertical Depth (usft)	Name	Lithology	Dip (°)	Dip Direction (°)
	1,260.09	1,249.00	Fox Hills			
	4,211.35	4,128.00	Parkman			
	4,560.08	4,476.00	Sussex			
	7,311.10	7,208.00	Sharon Springs			
	7,371.16	7,258.00	Niobrara			
	7,451.24	7,320.00	Nio B			
	7,549.87	7,388.00	Nio C			
	7,837.85	7,523.00	Fort Hayes			
	7,932.22	7,544.00	Codell			

Plan Annotations					
	Measured Depth (usft)	Vertical Depth (usft)	Local Coordinates		Comment
			+N/-S (usft)	+E/-W (usft)	
	250.00	250.00	0.00	0.00	Begin Nudge @ 250.00ft
	1,116.67	1,109.25	-91.76	-34.12	End Nudge @ 1116.67ft
	3,890.67	3,812.16	-676.64	-251.64	Begin Drop @ 3890.67ft
	4,540.67	4,456.59	-745.46	-277.23	End Drop @ 4540.67ft
	6,920.88	6,836.80	-745.46	-277.23	KOP @ 6920.88ft :: DLS = 8°/100'
	8,046.91	7,553.00	-748.14	439.99	End Build @ 8046.91ft
	17,814.90	7,539.00	-784.66	10,207.90	TD Well @ 17814.90ft