



Kerr-McGee Oil & Gas Onshore LP

A subsidiary of Anadarko Petroleum Corporation

1099 18th Street
Denver, CO 80202
720-929-6000

April 9, 2018

Julie Murphy
Director, Colorado Oil and Gas Conservation Commission
Department of Natural Resources
The Chancery Building
1120 Lincoln Street, Suite 801
Denver, CO 80203

Re: **30 Day Certification Letter - 318A.e**
BAJA BERG 35-8HZ (Doc No. 401600305)
Township 2 North, Range 67 West
Section 35: SESW
Unit Acreage: 720 Acres
Proposed Spacing Unit:
02N67W SEC 35: SESW, S2SE;
02N67W SEC 36: S2S2;
02N66W SEC 31: S2SW;
01N67W SEC 2: NENW, N2NE;
01N67W SEC 1: N2N2;
01N66W SEC 6: N2NW
Weld County, Colorado

Dear Director Murphy:

Kerr McGee Oil and Gas Onshore LP ("KMG") hereby certifies that KMG owns one hundred percent (100%) of the leasehold interest in the mineral rights in the proposed spacing unit. KMG hereby respectfully requests approval of this boundary well.

If you have any questions or issues regarding this permit, please contact our office.

Sincerely,

Kerr-McGee Oil and Gas Onshore LP

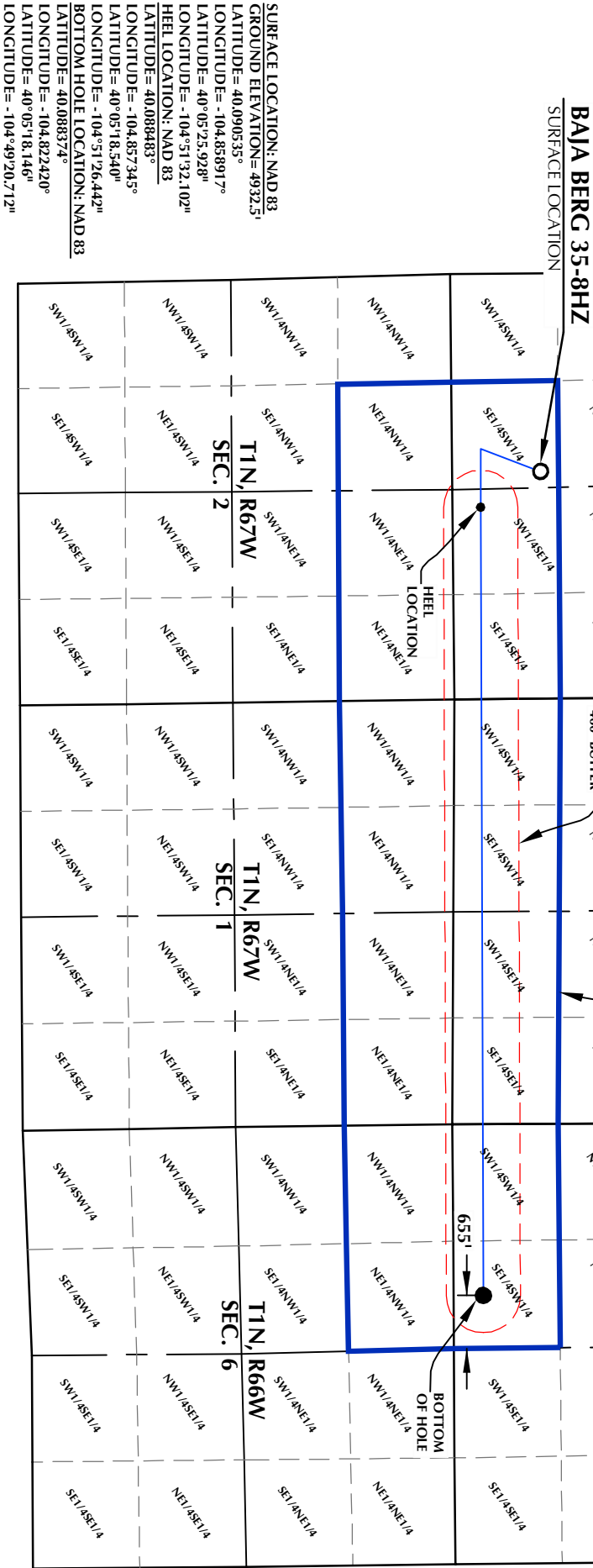
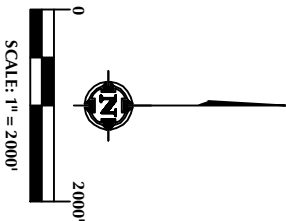
A handwritten signature in black ink, appearing to be 'EH' or similar initials, written over a faint circular stamp.

Erin Hampe
Regulatory Analyst

Enclosure

DISTANCE FROM COMPLETED
PORTION OF WELLBORE TO
NEAREST UNIT BOUNDARY= 655'

BAJA BERG 35-8HZ WELLBORE SPACING UNIT



SURFACE LOCATION: NAD 83
GROUND ELEVATION= 4932.5'
LATITUDE= 40.090533°
LONGITUDE= -104.858917°
LATITUDE= 40°05'25.928"
LONGITUDE= -104°51'32.102"
HEEL LOCATION: NAD 83
LATITUDE= 40.088483°
LONGITUDE= -104.857345°
LATITUDE= 40°05'18.540"
LONGITUDE= -104°51'26.442"
BOTTOM HOLE LOCATION: NAD 83
LATITUDE= 40.088374°
LONGITUDE= -104.822420°
LATITUDE= 40°05'18.146"
LONGITUDE= -104°49'20.712"

WELL PAD - BAJA BERG 14-35HZ

BAJA BERG 35-8HZ
WELLBORE SPACING UNIT
1102' FSL & 2450' FWL SESW (SURFACE)
353' FSL & 2380' FWL SWSE (HEEL)
LOCATED IN SECTION 35
T2N, R67W, 6TH P.M.
369' FSL & 2128' FWL LOT 1 (SESW) (BOTTOM)
LOCATED IN SECTION 31
T2N, R66W, 6TH P.M.
WELD COUNTY, COLORADO

Kerr-McGee Oil & Gas Onshore L.P.

1099 18th Street
Denver, Colorado 80202



CONSULTING, LLC

SHERIDAN OFFICE
1095 Sheridan Avenue
Sheridan, Wyoming 82801
Phone 307-674-0609
LOVELAND OFFICE
1635 Foxtrail Drive, Suite 204
Loveland, Colorado 80538
Phone 970-776-4331

DRAFTED BY:	LMO	CHECKED BY:	RKF
DATE DRAFTED:	2/26/18	DATE SURVEYED:	2/12/18
REVISED:		FILE NAME:	16-136

- NOTES:
- DRAWING LATITUDE AND LONGITUDE COORDINATES ARE NAD 83 (2011 EPOCH: 2010).
 - ELEVATION BASED ON NAVD88 (GEOID12B).
 - BASIS OF BEARING DERIVED FROM COLORADO COORDINATE SYSTEM OF 1983 NORTH ZONE.
 - ALL MEASURED DISTANCES ARE GRID.
- COMBINED SCALE FACTOR: .99972874
CALCULATED FROM THE E. 1/4 CORNER OF SECTION 35, T2N, R67W.