

US ROCKIES WATTENBERG PLANNING

WELD-NAD83-UTMFT13N

2N-67W-35 BAJA BERG 14-35HZ PAD

BAJA BERG 35-7HZ

Plan A

Plan: Permit Rev-1

SHL Lat/Long: 40.090618/-104.858919

Survey Program: MWD+IFR+MSA

Standard Planning Report

02 February, 2018

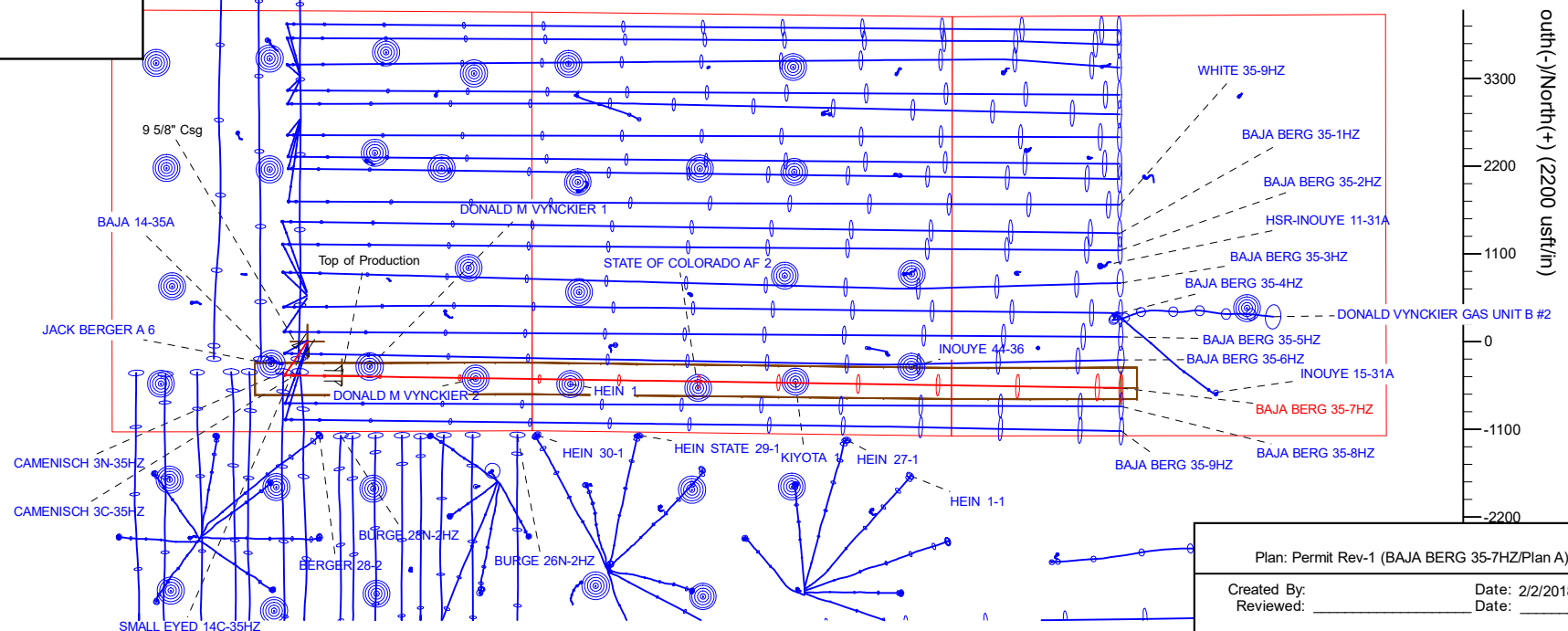
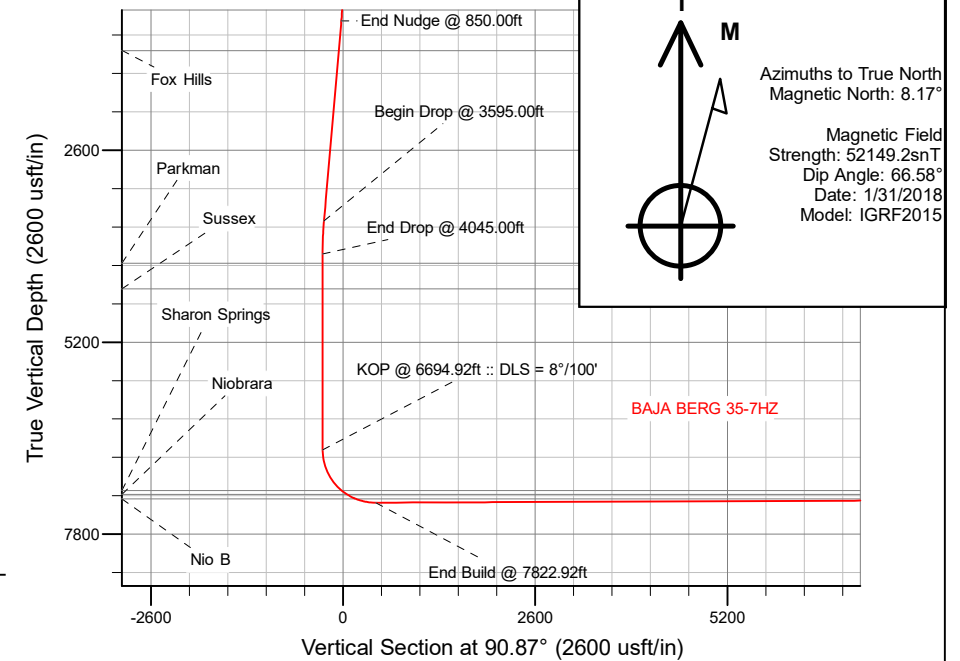
US ROCKIES WATTENBERG PLANNING

CASING DETAILS			<p>WELL DETAILS: BAJA BERG 35-7HZ</p> <p>GL = 4934'</p> <p>RKB = 17' @ 4951.00usft (Drilling Rig)</p>
TVD	MD	Size	
1500.00	1510.60	9-5/8	
7373.00	7822.92	5-1/2	

SECTION DETAILS										
Sec	MD	Inc	Azi	TVD	+N/-S	+E/-W	Dleg	TFace	Vsect	Target
1	0.00	0.00	0.00	0.00	0.00	0.00	0.00	0.00	0.00	
2	250.00	0.00	0.00	250.00	0.00	0.00	0.00	0.00	0.00	
3	850.00	9.00	214.00	847.54	-38.99	-26.30	1.50	214.00	-25.70	
4	3595.00	9.00	214.00	3558.74	-394.99	-266.42	0.00	0.00	-260.39	
5	4045.00	0.00	0.00	4006.89	-424.23	-286.14	2.00	180.00	-279.67	
6	6694.92	0.00	0.00	6656.81	-424.23	-286.14	0.00	0.00	-279.67	
7	7822.92	90.24	90.87	7373.00	-435.10	432.97	8.00	90.87	439.53	
8	17597.14	90.24	90.87	7332.00	-582.88	10205.98	0.00	0.00	10213.66	BAJA BERG 35-7HZ_BHL

WELLBORE TARGET DETAILS (LAT/LONG)					
Name	TVD	+N/-S	+E/-W	Latitude	Longitude
BAJA BERG 35-7HZ_SHL	0.00	0.00	0.00	40.090618	-104.858919
BAJA BERG 35-7HZ_BHL	7332.00	-582.88	10205.98	40.089012	-104.822428

FORMATION TOP DETAILS		
TVDPPath	MDPath	Formation
1249.00	1256.47	Fox Hills
4128.00	4166.11	Parkman
4476.00	4514.11	Sussex
7208.00	7323.90	Sharon Springs
7258.00	7408.40	Niobrara
7320.00	7542.64	Nio B



Plan: Permit Rev-1 (BAJA BERG 35-7HZ/Plan A)

Created By: _____ Date: 2/2/2018
Reviewed: _____ Date: _____

Corporate Planning Report

Database:	PLANNING	Local Co-ordinate Reference:	Well BAJA BERG 35-7HZ
Company:	US ROCKIES WATTENBERG PLANNING	TVD Reference:	RKB = 17' @ 4951.00usft (Drilling Rig)
Project:	WELD-NAD83-UTMFT13N	MD Reference:	RKB = 17' @ 4951.00usft (Drilling Rig)
Site:	2N-67W-35 BAJA BERG 14-35HZ PAD	North Reference:	True
Well:	BAJA BERG 35-7HZ	Survey Calculation Method:	Minimum Curvature
Wellbore:	Plan A		
Design:	Permit Rev-1		

Project	WELD-NAD83-UTMFT13N		
Map System:	Universal Transverse Mercator (US Survey Feet)	System Datum:	Mean Sea Level
Geo Datum:	North American Datum 1983		
Map Zone:	Zone 13N (108 W to 102 W)		

Site		2N-67W-35 BAJA BERG 14-35HZ PAD			
Site Position:		Northing:	14,559,777.62 usft	Latitude:	40.090659
From:	Lat/Long	Easting:	1,679,873.96 usft	Longitude:	-104.858920
Position Uncertainty:	0.00 usft	Slot Radius:	13-3/16 "	Grid Convergence:	0.09 °

Well	BAJA BERG 35-7HZ					
Well Position	+N/-S	-14.93 usft	Northing:	14,559,762.69 usft	Latitude:	40.090618
	+E/-W	0.28 usft	Easting:	1,679,874.26 usft	Longitude:	-104.858919
Position Uncertainty		3.28 usft	Wellhead Elevation:		Ground Level:	4,934.00 usft

Wellbore	Plan A				
Magnetics	Model Name	Sample Date	Declination (°)	Dip Angle (°)	Field Strength (nT)
	IGRF2015	1/31/2018	8.17	66.58	52,149.18598914

Design	Permit Rev-1				
Audit Notes:					
Version:		Phase:	PLAN	Tie On Depth:	0.00
Vertical Section:	Depth From (TVD) (usft)	+N/-S (usft)	+E/-W (usft)	Direction (°)	
	0.00	0.00	0.00	90.87	

Plan Survey Tool Program		Date 2/1/2018			
Depth From (usft)	Depth To (usft)	Survey (Wellbore)	Tool Name	Remarks	
1	0.00	1,500.00	Permit Rev-1 (Plan A)	APC_ISCWSA REV 2 MWD+II Fixed:v2:crustal field declinatio	
2	1,500.00	17,597.14	Permit Rev-1 (Plan A)	APC_ISCWSA REV 2 MWD+II Fixed:v2:Rockies, crustal dec +	

Corporate
Planning Report

Database:	PLANNING	Local Co-ordinate Reference:	Well BAJA BERG 35-7HZ
Company:	US ROCKIES WATTENBERG PLANNING	TVD Reference:	RKB = 17' @ 4951.00usft (Drilling Rig)
Project:	WELD-NAD83-UTMFT13N	MD Reference:	RKB = 17' @ 4951.00usft (Drilling Rig)
Site:	2N-67W-35 BAJA BERG 14-35HZ PAD	North Reference:	True
Well:	BAJA BERG 35-7HZ	Survey Calculation Method:	Minimum Curvature
Wellbore:	Plan A		
Design:	Permit Rev-1		

Plan Sections										
Measured Depth (usft)	Inclination (°)	Azimuth (°)	Vertical Depth (usft)	+N/-S (usft)	+E/-W (usft)	Dogleg Rate (°/100usft)	Build Rate (°/100usft)	Turn Rate (°/100usft)	TFO (°)	Target
0.00	0.00	0.00	0.00	0.00	0.00	0.00	0.00	0.00	0.00	
250.00	0.00	0.00	250.00	0.00	0.00	0.00	0.00	0.00	0.00	
850.00	9.00	214.00	847.54	-38.99	-26.30	1.50	1.50	0.00	214.00	
3,595.00	9.00	214.00	3,558.74	-394.99	-266.42	0.00	0.00	0.00	0.00	
4,045.00	0.00	0.00	4,006.89	-424.23	-286.14	2.00	-2.00	32.44	180.00	
6,694.92	0.00	0.00	6,656.81	-424.23	-286.14	0.00	0.00	0.00	0.00	
7,822.92	90.24	90.87	7,373.00	-435.10	432.97	8.00	8.00	8.06	90.87	
17,597.14	90.24	90.87	7,332.00	-582.88	10,205.98	0.00	0.00	0.00	0.00	BAJA BERG 35-7HZ_

Corporate Planning Report

Database:	PLANNING	Local Co-ordinate Reference: TVD Reference: MD Reference: North Reference: Survey Calculation Method:		Well BAJA BERG 35-7HZ					
Company:	US ROCKIES WATTENBERG PLANNING			RKB = 17' @ 4951.00usft (Drilling Rig)					
Project:	WELD-NAD83-UTMFT13N			RKB = 17' @ 4951.00usft (Drilling Rig)					
Site:	2N-67W-35 BAJA BERG 14-35HZ PAD			True					
Well:	BAJA BERG 35-7HZ			Minimum Curvature					
Wellbore:	Plan A								
Design:	Permit Rev-1								
Planned Survey									
Measured Depth (usft)	Inclination (°)	Azimuth (°)	Vertical Depth (usft)	+N/-S (usft)	+E/-W (usft)	Vertical Section (usft)	Dogleg Rate (°/100usft)	Build Rate (°/100usft)	Turn Rate (°/100usft)
0.00	0.00	0.00	0.00	0.00	0.00	0.00	0.00	0.00	0.00
100.00	0.00	0.00	100.00	0.00	0.00	0.00	0.00	0.00	0.00
200.00	0.00	0.00	200.00	0.00	0.00	0.00	0.00	0.00	0.00
250.00	0.00	0.00	250.00	0.00	0.00	0.00	0.00	0.00	0.00
Begin Nudge @ 250.00ft									
300.00	0.75	214.00	300.00	-0.27	-0.18	-0.18	1.50	1.50	0.00
400.00	2.25	214.00	399.96	-2.44	-1.65	-1.61	1.50	1.50	0.00
500.00	3.75	214.00	499.82	-6.78	-4.57	-4.47	1.50	1.50	0.00
600.00	5.25	214.00	599.51	-13.28	-8.96	-8.76	1.50	1.50	0.00
700.00	6.75	214.00	698.96	-21.95	-14.81	-14.47	1.50	1.50	0.00
800.00	8.25	214.00	798.10	-32.77	-22.10	-21.60	1.50	1.50	0.00
850.00	9.00	214.00	847.54	-38.99	-26.30	-25.70	1.50	1.50	0.00
End Nudge @ 850.00ft									
900.00	9.00	214.00	896.92	-45.47	-30.67	-29.98	0.00	0.00	0.00
1,000.00	9.00	214.00	995.69	-58.44	-39.42	-38.53	0.00	0.00	0.00
1,100.00	9.00	214.00	1,094.46	-71.41	-48.17	-47.08	0.00	0.00	0.00
1,200.00	9.00	214.00	1,193.23	-84.38	-56.91	-55.63	0.00	0.00	0.00
1,256.47	9.00	214.00	1,249.00	-91.70	-61.85	-60.45	0.00	0.00	0.00
Fox Hills									
1,300.00	9.00	214.00	1,292.00	-97.35	-65.66	-64.18	0.00	0.00	0.00
1,400.00	9.00	214.00	1,390.76	-110.32	-74.41	-72.73	0.00	0.00	0.00
1,500.00	9.00	214.00	1,489.53	-123.29	-83.16	-81.28	0.00	0.00	0.00
1,510.60	9.00	214.00	1,500.00	-124.66	-84.08	-82.18	0.00	0.00	0.00
9 5/8" Csg									
1,600.00	9.00	214.00	1,588.30	-136.25	-91.90	-89.83	0.00	0.00	0.00
1,700.00	9.00	214.00	1,687.07	-149.22	-100.65	-98.38	0.00	0.00	0.00
1,800.00	9.00	214.00	1,785.84	-162.19	-109.40	-106.93	0.00	0.00	0.00
1,900.00	9.00	214.00	1,884.61	-175.16	-118.15	-115.47	0.00	0.00	0.00
2,000.00	9.00	214.00	1,983.38	-188.13	-126.90	-124.02	0.00	0.00	0.00
2,100.00	9.00	214.00	2,082.15	-201.10	-135.64	-132.57	0.00	0.00	0.00
2,200.00	9.00	214.00	2,180.91	-214.07	-144.39	-141.12	0.00	0.00	0.00
2,300.00	9.00	214.00	2,279.68	-227.04	-153.14	-149.67	0.00	0.00	0.00
2,400.00	9.00	214.00	2,378.45	-240.01	-161.89	-158.22	0.00	0.00	0.00
2,500.00	9.00	214.00	2,477.22	-252.98	-170.63	-166.77	0.00	0.00	0.00
2,600.00	9.00	214.00	2,575.99	-265.94	-179.38	-175.32	0.00	0.00	0.00
2,700.00	9.00	214.00	2,674.76	-278.91	-188.13	-183.87	0.00	0.00	0.00
2,800.00	9.00	214.00	2,773.53	-291.88	-196.88	-192.42	0.00	0.00	0.00
2,900.00	9.00	214.00	2,872.30	-304.85	-205.63	-200.97	0.00	0.00	0.00
3,000.00	9.00	214.00	2,971.07	-317.82	-214.37	-209.52	0.00	0.00	0.00
3,100.00	9.00	214.00	3,069.83	-330.79	-223.12	-218.07	0.00	0.00	0.00
3,200.00	9.00	214.00	3,168.60	-343.76	-231.87	-226.62	0.00	0.00	0.00
3,300.00	9.00	214.00	3,267.37	-356.73	-240.62	-235.17	0.00	0.00	0.00
3,400.00	9.00	214.00	3,366.14	-369.70	-249.36	-243.72	0.00	0.00	0.00
3,500.00	9.00	214.00	3,464.91	-382.67	-258.11	-252.27	0.00	0.00	0.00
3,595.00	9.00	214.00	3,558.74	-394.99	-266.42	-260.39	0.00	0.00	0.00
Begin Drop @ 3595.00ft									
3,600.00	8.90	214.00	3,563.68	-395.63	-266.86	-260.82	2.00	-2.00	0.00
3,700.00	6.90	214.00	3,662.73	-407.03	-274.54	-268.33	2.00	-2.00	0.00
3,800.00	4.90	214.00	3,762.19	-415.55	-280.29	-273.95	2.00	-2.00	0.00
3,900.00	2.90	214.00	3,861.95	-421.19	-284.09	-277.67	2.00	-2.00	0.00
4,000.00	0.90	214.00	3,961.89	-423.93	-285.95	-279.48	2.00	-2.00	0.00
4,045.00	0.00	0.00	4,006.89	-424.23	-286.14	-279.67	2.00	-2.00	324.44
End Drop @ 4045.00ft									

Corporate Planning Report

Database:	PLANNING	Local Co-ordinate Reference:	Well BAJA BERG 35-7HZ
Company:	US ROCKIES WATTENBERG PLANNING	TVD Reference:	RKB = 17' @ 4951.00usft (Drilling Rig)
Project:	WELD-NAD83-UTMFT13N	MD Reference:	RKB = 17' @ 4951.00usft (Drilling Rig)
Site:	2N-67W-35 BAJA BERG 14-35HZ PAD	North Reference:	True
Well:	BAJA BERG 35-7HZ	Survey Calculation Method:	Minimum Curvature
Wellbore:	Plan A		
Design:	Permit Rev-1		

Planned Survey									
Measured Depth (usft)	Inclination (°)	Azimuth (°)	Vertical Depth (usft)	+N/-S (usft)	+E/-W (usft)	Vertical Section (usft)	Dogleg Rate (°/100usft)	Build Rate (°/100usft)	Turn Rate (°/100usft)
4,100.00	0.00	0.00	4,061.89	-424.23	-286.14	-279.67	0.00	0.00	0.00
4,166.11	0.00	0.00	4,128.00	-424.23	-286.14	-279.67	0.00	0.00	0.00
Parkman									
4,200.00	0.00	0.00	4,161.89	-424.23	-286.14	-279.67	0.00	0.00	0.00
4,300.00	0.00	0.00	4,261.89	-424.23	-286.14	-279.67	0.00	0.00	0.00
4,400.00	0.00	0.00	4,361.89	-424.23	-286.14	-279.67	0.00	0.00	0.00
4,500.00	0.00	0.00	4,461.89	-424.23	-286.14	-279.67	0.00	0.00	0.00
4,514.11	0.00	0.00	4,476.00	-424.23	-286.14	-279.67	0.00	0.00	0.00
Sussex									
4,600.00	0.00	0.00	4,561.89	-424.23	-286.14	-279.67	0.00	0.00	0.00
4,700.00	0.00	0.00	4,661.89	-424.23	-286.14	-279.67	0.00	0.00	0.00
4,800.00	0.00	0.00	4,761.89	-424.23	-286.14	-279.67	0.00	0.00	0.00
4,900.00	0.00	0.00	4,861.89	-424.23	-286.14	-279.67	0.00	0.00	0.00
5,000.00	0.00	0.00	4,961.89	-424.23	-286.14	-279.67	0.00	0.00	0.00
5,100.00	0.00	0.00	5,061.89	-424.23	-286.14	-279.67	0.00	0.00	0.00
5,200.00	0.00	0.00	5,161.89	-424.23	-286.14	-279.67	0.00	0.00	0.00
5,300.00	0.00	0.00	5,261.89	-424.23	-286.14	-279.67	0.00	0.00	0.00
5,400.00	0.00	0.00	5,361.89	-424.23	-286.14	-279.67	0.00	0.00	0.00
5,500.00	0.00	0.00	5,461.89	-424.23	-286.14	-279.67	0.00	0.00	0.00
5,600.00	0.00	0.00	5,561.89	-424.23	-286.14	-279.67	0.00	0.00	0.00
5,700.00	0.00	0.00	5,661.89	-424.23	-286.14	-279.67	0.00	0.00	0.00
5,800.00	0.00	0.00	5,761.89	-424.23	-286.14	-279.67	0.00	0.00	0.00
5,900.00	0.00	0.00	5,861.89	-424.23	-286.14	-279.67	0.00	0.00	0.00
6,000.00	0.00	0.00	5,961.89	-424.23	-286.14	-279.67	0.00	0.00	0.00
6,100.00	0.00	0.00	6,061.89	-424.23	-286.14	-279.67	0.00	0.00	0.00
6,200.00	0.00	0.00	6,161.89	-424.23	-286.14	-279.67	0.00	0.00	0.00
6,300.00	0.00	0.00	6,261.89	-424.23	-286.14	-279.67	0.00	0.00	0.00
6,400.00	0.00	0.00	6,361.89	-424.23	-286.14	-279.67	0.00	0.00	0.00
6,500.00	0.00	0.00	6,461.89	-424.23	-286.14	-279.67	0.00	0.00	0.00
6,600.00	0.00	0.00	6,561.89	-424.23	-286.14	-279.67	0.00	0.00	0.00
6,694.92	0.00	0.00	6,656.81	-424.23	-286.14	-279.67	0.00	0.00	0.00
KOP @ 6694.92ft :: DLS = 8°/100'									
6,700.00	0.41	90.87	6,661.89	-424.23	-286.13	-279.65	8.00	8.00	1,788.71
6,800.00	8.41	90.87	6,761.52	-424.34	-278.45	-271.98	8.00	8.00	0.00
6,900.00	16.41	90.87	6,859.10	-424.67	-256.99	-250.51	8.00	8.00	0.00
7,000.00	24.41	90.87	6,952.75	-425.19	-222.15	-215.67	8.00	8.00	0.00
7,100.00	32.41	90.87	7,040.64	-425.91	-174.62	-168.14	8.00	8.00	0.00
7,200.00	40.41	90.87	7,121.05	-426.81	-115.33	-108.83	8.00	8.00	0.00
7,300.00	48.41	90.87	7,192.44	-427.87	-45.42	-38.92	8.00	8.00	0.00
7,323.90	50.32	90.87	7,208.00	-428.14	-27.28	-20.78	8.00	8.00	0.00
Sharon Springs									
7,400.00	56.41	90.87	7,253.39	-429.06	33.75	40.26	8.00	8.00	0.00
7,408.40	57.08	90.87	7,258.00	-429.17	40.77	47.28	8.00	8.00	0.00
Niobrara									
7,500.00	64.41	90.87	7,302.74	-430.38	120.62	127.14	8.00	8.00	0.00
7,542.64	67.82	90.87	7,320.00	-430.97	159.59	166.12	8.00	8.00	0.00
Nio B									
7,600.00	72.41	90.87	7,339.51	-431.78	213.52	220.05	8.00	8.00	0.00
7,700.00	80.41	90.87	7,362.99	-433.25	310.62	317.17	8.00	8.00	0.00
7,800.00	88.41	90.87	7,372.73	-434.75	410.06	416.61	8.00	8.00	0.00
7,822.92	90.24	90.87	7,373.00	-435.10	432.97	439.53	8.00	8.00	0.00
End Build @ 7822.92ft - Top of Production									
7,900.00	90.24	90.87	7,372.68	-436.27	510.04	516.61	0.00	0.00	0.00

Corporate Planning Report

Database:	PLANNING	Local Co-ordinate Reference:	Well BAJA BERG 35-7HZ
Company:	US ROCKIES WATTENBERG PLANNING	TVD Reference:	RKB = 17' @ 4951.00usft (Drilling Rig)
Project:	WELD-NAD83-UTMFT13N	MD Reference:	RKB = 17' @ 4951.00usft (Drilling Rig)
Site:	2N-67W-35 BAJA BERG 14-35HZ PAD	North Reference:	True
Well:	BAJA BERG 35-7HZ	Survey Calculation Method:	Minimum Curvature
Wellbore:	Plan A		
Design:	Permit Rev-1		

Planned Survey									
Measured Depth (usft)	Inclination (°)	Azimuth (°)	Vertical Depth (usft)	+N/-S (usft)	+E/-W (usft)	Vertical Section (usft)	Dogleg Rate (°/100usft)	Build Rate (°/100usft)	Turn Rate (°/100usft)
8,000.00	90.24	90.87	7,372.26	-437.78	610.03	616.61	0.00	0.00	0.00
8,100.00	90.24	90.87	7,371.84	-439.29	710.02	716.60	0.00	0.00	0.00
8,200.00	90.24	90.87	7,371.42	-440.80	810.00	816.60	0.00	0.00	0.00
8,300.00	90.24	90.87	7,371.00	-442.31	909.99	916.60	0.00	0.00	0.00
8,400.00	90.24	90.87	7,370.58	-443.83	1,009.98	1,016.60	0.00	0.00	0.00
8,500.00	90.24	90.87	7,370.16	-445.34	1,109.97	1,116.60	0.00	0.00	0.00
8,600.00	90.24	90.87	7,369.74	-446.85	1,209.95	1,216.60	0.00	0.00	0.00
8,700.00	90.24	90.87	7,369.32	-448.36	1,309.94	1,316.60	0.00	0.00	0.00
8,800.00	90.24	90.87	7,368.90	-449.87	1,409.93	1,416.60	0.00	0.00	0.00
8,900.00	90.24	90.87	7,368.48	-451.39	1,509.92	1,516.60	0.00	0.00	0.00
9,000.00	90.24	90.87	7,368.07	-452.90	1,609.91	1,616.60	0.00	0.00	0.00
9,100.00	90.24	90.87	7,367.65	-454.41	1,709.89	1,716.60	0.00	0.00	0.00
9,200.00	90.24	90.87	7,367.23	-455.92	1,809.88	1,816.59	0.00	0.00	0.00
9,300.00	90.24	90.87	7,366.81	-457.43	1,909.87	1,916.59	0.00	0.00	0.00
9,400.00	90.24	90.87	7,366.39	-458.94	2,009.86	2,016.59	0.00	0.00	0.00
9,500.00	90.24	90.87	7,365.97	-460.46	2,109.84	2,116.59	0.00	0.00	0.00
9,600.00	90.24	90.87	7,365.55	-461.97	2,209.83	2,216.59	0.00	0.00	0.00
9,700.00	90.24	90.87	7,365.13	-463.48	2,309.82	2,316.59	0.00	0.00	0.00
9,800.00	90.24	90.87	7,364.71	-464.99	2,409.81	2,416.59	0.00	0.00	0.00
9,900.00	90.24	90.87	7,364.29	-466.50	2,509.79	2,516.59	0.00	0.00	0.00
10,000.00	90.24	90.87	7,363.87	-468.02	2,609.78	2,616.59	0.00	0.00	0.00
10,100.00	90.24	90.87	7,363.45	-469.53	2,709.77	2,716.59	0.00	0.00	0.00
10,200.00	90.24	90.87	7,363.03	-471.04	2,809.76	2,816.59	0.00	0.00	0.00
10,300.00	90.24	90.87	7,362.61	-472.55	2,909.75	2,916.59	0.00	0.00	0.00
10,400.00	90.24	90.87	7,362.19	-474.06	3,009.73	3,016.58	0.00	0.00	0.00
10,500.00	90.24	90.87	7,361.77	-475.58	3,109.72	3,116.58	0.00	0.00	0.00
10,600.00	90.24	90.87	7,361.35	-477.09	3,209.71	3,216.58	0.00	0.00	0.00
10,700.00	90.24	90.87	7,360.93	-478.60	3,309.70	3,316.58	0.00	0.00	0.00
10,800.00	90.24	90.87	7,360.51	-480.11	3,409.68	3,416.58	0.00	0.00	0.00
10,900.00	90.24	90.87	7,360.09	-481.62	3,509.67	3,516.58	0.00	0.00	0.00
11,000.00	90.24	90.87	7,359.68	-483.14	3,609.66	3,616.58	0.00	0.00	0.00
11,100.00	90.24	90.87	7,359.26	-484.65	3,709.65	3,716.58	0.00	0.00	0.00
11,200.00	90.24	90.87	7,358.84	-486.16	3,809.63	3,816.58	0.00	0.00	0.00
11,300.00	90.24	90.87	7,358.42	-487.67	3,909.62	3,916.58	0.00	0.00	0.00
11,400.00	90.24	90.87	7,358.00	-489.18	4,009.61	4,016.58	0.00	0.00	0.00
11,500.00	90.24	90.87	7,357.58	-490.70	4,109.60	4,116.57	0.00	0.00	0.00
11,600.00	90.24	90.87	7,357.16	-492.21	4,209.59	4,216.57	0.00	0.00	0.00
11,700.00	90.24	90.87	7,356.74	-493.72	4,309.57	4,316.57	0.00	0.00	0.00
11,800.00	90.24	90.87	7,356.32	-495.23	4,409.56	4,416.57	0.00	0.00	0.00
11,900.00	90.24	90.87	7,355.90	-496.74	4,509.55	4,516.57	0.00	0.00	0.00
12,000.00	90.24	90.87	7,355.48	-498.26	4,609.54	4,616.57	0.00	0.00	0.00
12,100.00	90.24	90.87	7,355.06	-499.77	4,709.52	4,716.57	0.00	0.00	0.00
12,200.00	90.24	90.87	7,354.64	-501.28	4,809.51	4,816.57	0.00	0.00	0.00
12,300.00	90.24	90.87	7,354.22	-502.79	4,909.50	4,916.57	0.00	0.00	0.00
12,400.00	90.24	90.87	7,353.80	-504.30	5,009.49	5,016.57	0.00	0.00	0.00
12,500.00	90.24	90.87	7,353.38	-505.81	5,109.47	5,116.57	0.00	0.00	0.00
12,600.00	90.24	90.87	7,352.96	-507.33	5,209.46	5,216.57	0.00	0.00	0.00
12,700.00	90.24	90.87	7,352.54	-508.84	5,309.45	5,316.56	0.00	0.00	0.00
12,800.00	90.24	90.87	7,352.12	-510.35	5,409.44	5,416.56	0.00	0.00	0.00
12,900.00	90.24	90.87	7,351.70	-511.86	5,509.43	5,516.56	0.00	0.00	0.00
13,000.00	90.24	90.87	7,351.29	-513.37	5,609.41	5,616.56	0.00	0.00	0.00
13,100.00	90.24	90.87	7,350.87	-514.89	5,709.40	5,716.56	0.00	0.00	0.00
13,200.00	90.24	90.87	7,350.45	-516.40	5,809.39	5,816.56	0.00	0.00	0.00
13,300.00	90.24	90.87	7,350.03	-517.91	5,909.38	5,916.56	0.00	0.00	0.00

Corporate Planning Report

Database:	PLANNING	Local Co-ordinate Reference:	Well BAJA BERG 35-7HZ
Company:	US ROCKIES WATTENBERG PLANNING	TVD Reference:	RKB = 17' @ 4951.00usft (Drilling Rig)
Project:	WELD-NAD83-UTMFT13N	MD Reference:	RKB = 17' @ 4951.00usft (Drilling Rig)
Site:	2N-67W-35 BAJA BERG 14-35HZ PAD	North Reference:	True
Well:	BAJA BERG 35-7HZ	Survey Calculation Method:	Minimum Curvature
Wellbore:	Plan A		
Design:	Permit Rev-1		

Planned Survey									
Measured Depth (usft)	Inclination (°)	Azimuth (°)	Vertical Depth (usft)	+N/-S (usft)	+E/-W (usft)	Vertical Section (usft)	Dogleg Rate (°/100usft)	Build Rate (°/100usft)	Turn Rate (°/100usft)
13,400.00	90.24	90.87	7,349.61	-519.42	6,009.36	6,016.56	0.00	0.00	0.00
13,500.00	90.24	90.87	7,349.19	-520.93	6,109.35	6,116.56	0.00	0.00	0.00
13,600.00	90.24	90.87	7,348.77	-522.45	6,209.34	6,216.56	0.00	0.00	0.00
13,700.00	90.24	90.87	7,348.35	-523.96	6,309.33	6,316.56	0.00	0.00	0.00
13,800.00	90.24	90.87	7,347.93	-525.47	6,409.31	6,416.55	0.00	0.00	0.00
13,900.00	90.24	90.87	7,347.51	-526.98	6,509.30	6,516.55	0.00	0.00	0.00
14,000.00	90.24	90.87	7,347.09	-528.49	6,609.29	6,616.55	0.00	0.00	0.00
14,100.00	90.24	90.87	7,346.67	-530.01	6,709.28	6,716.55	0.00	0.00	0.00
14,200.00	90.24	90.87	7,346.25	-531.52	6,809.27	6,816.55	0.00	0.00	0.00
14,300.00	90.24	90.87	7,345.83	-533.03	6,909.25	6,916.55	0.00	0.00	0.00
14,400.00	90.24	90.87	7,345.41	-534.54	7,009.24	7,016.55	0.00	0.00	0.00
14,500.00	90.24	90.87	7,344.99	-536.05	7,109.23	7,116.55	0.00	0.00	0.00
14,600.00	90.24	90.87	7,344.57	-537.57	7,209.22	7,216.55	0.00	0.00	0.00
14,700.00	90.24	90.87	7,344.15	-539.08	7,309.20	7,316.55	0.00	0.00	0.00
14,800.00	90.24	90.87	7,343.73	-540.59	7,409.19	7,416.55	0.00	0.00	0.00
14,900.00	90.24	90.87	7,343.31	-542.10	7,509.18	7,516.54	0.00	0.00	0.00
15,000.00	90.24	90.87	7,342.90	-543.61	7,609.17	7,616.54	0.00	0.00	0.00
15,100.00	90.24	90.87	7,342.48	-545.13	7,709.15	7,716.54	0.00	0.00	0.00
15,200.00	90.24	90.87	7,342.06	-546.64	7,809.14	7,816.54	0.00	0.00	0.00
15,300.00	90.24	90.87	7,341.64	-548.15	7,909.13	7,916.54	0.00	0.00	0.00
15,400.00	90.24	90.87	7,341.22	-549.66	8,009.12	8,016.54	0.00	0.00	0.00
15,500.00	90.24	90.87	7,340.80	-551.17	8,109.11	8,116.54	0.00	0.00	0.00
15,600.00	90.24	90.87	7,340.38	-552.68	8,209.09	8,216.54	0.00	0.00	0.00
15,700.00	90.24	90.87	7,339.96	-554.20	8,309.08	8,316.54	0.00	0.00	0.00
15,800.00	90.24	90.87	7,339.54	-555.71	8,409.07	8,416.54	0.00	0.00	0.00
15,900.00	90.24	90.87	7,339.12	-557.22	8,509.06	8,516.54	0.00	0.00	0.00
16,000.00	90.24	90.87	7,338.70	-558.73	8,609.04	8,616.54	0.00	0.00	0.00
16,100.00	90.24	90.87	7,338.28	-560.24	8,709.03	8,716.53	0.00	0.00	0.00
16,200.00	90.24	90.87	7,337.86	-561.76	8,809.02	8,816.53	0.00	0.00	0.00
16,300.00	90.24	90.87	7,337.44	-563.27	8,909.01	8,916.53	0.00	0.00	0.00
16,400.00	90.24	90.87	7,337.02	-564.78	9,008.99	9,016.53	0.00	0.00	0.00
16,500.00	90.24	90.87	7,336.60	-566.29	9,108.98	9,116.53	0.00	0.00	0.00
16,600.00	90.24	90.87	7,336.18	-567.80	9,208.97	9,216.53	0.00	0.00	0.00
16,700.00	90.24	90.87	7,335.76	-569.32	9,308.96	9,316.53	0.00	0.00	0.00
16,800.00	90.24	90.87	7,335.34	-570.83	9,408.95	9,416.53	0.00	0.00	0.00
16,900.00	90.24	90.87	7,334.92	-572.34	9,508.93	9,516.53	0.00	0.00	0.00
17,000.00	90.24	90.87	7,334.51	-573.85	9,608.92	9,616.53	0.00	0.00	0.00
17,100.00	90.24	90.87	7,334.09	-575.36	9,708.91	9,716.53	0.00	0.00	0.00
17,200.00	90.24	90.87	7,333.67	-576.88	9,808.90	9,816.52	0.00	0.00	0.00
17,300.00	90.24	90.87	7,333.25	-578.39	9,908.88	9,916.52	0.00	0.00	0.00
17,400.00	90.24	90.87	7,332.83	-579.90	10,008.87	10,016.52	0.00	0.00	0.00
17,500.00	90.24	90.87	7,332.41	-581.41	10,108.86	10,116.52	0.00	0.00	0.00
17,597.14	90.24	90.87	7,332.00	-582.88	10,205.98	10,213.66	0.00	0.00	0.00
TD Well @ 17597.14ft									

Casing Points					
Measured Depth (usft)	Vertical Depth (usft)	Name	Casing Diameter (")	Hole Diameter (")	
1,510.60	1,500.00	9 5/8" Csg	9-5/8	13-1/2	
7,822.92	7,373.00	Top of Production	5-1/2	7-7/8	

Corporate Planning Report

Database:	PLANNING	Local Co-ordinate Reference:	Well BAJA BERG 35-7HZ
Company:	US ROCKIES WATTENBERG PLANNING	TVD Reference:	RKB = 17' @ 4951.00usft (Drilling Rig)
Project:	WELD-NAD83-UTMFT13N	MD Reference:	RKB = 17' @ 4951.00usft (Drilling Rig)
Site:	2N-67W-35 BAJA BERG 14-35HZ PAD	North Reference:	True
Well:	BAJA BERG 35-7HZ	Survey Calculation Method:	Minimum Curvature
Wellbore:	Plan A		
Design:	Permit Rev-1		

Formations						
	Measured Depth (usft)	Vertical Depth (usft)	Name	Lithology	Dip (°)	Dip Direction (°)
	1,256.47	1,249.00	Fox Hills			
	4,166.11	4,128.00	Parkman			
	4,514.11	4,476.00	Sussex			
	7,323.90	7,208.00	Sharon Springs			
	7,408.40	7,258.00	Niobrara			
	7,542.64	7,320.00	Nio B			

Plan Annotations					
	Measured Depth (usft)	Vertical Depth (usft)	Local Coordinates		
			+N/-S (usft)	+E/-W (usft)	Comment
	250.00	250.00	0.00	0.00	Begin Nudge @ 250.00ft
	850.00	847.54	-38.99	-26.30	End Nudge @ 850.00ft
	3,595.00	3,558.74	-394.99	-266.42	Begin Drop @ 3595.00ft
	4,045.00	4,006.89	-424.23	-286.14	End Drop @ 4045.00ft
	6,694.92	6,656.81	-424.23	-286.14	KOP @ 6694.92ft :: DLS = 8°/100'
	7,822.92	7,373.00	-435.10	432.97	End Build @ 7822.92ft
	17,597.14	7,332.00	-582.88	10,205.98	TD Well @ 17597.14ft