

US ROCKIES WATTENBERG PLANNING

WELD-NAD83-UTMFT13N

2N-67W-35 BAJA BERG 14-35HZ PAD

BAJA BERG 35-9HZ

Plan A

Plan: Permit Rev-1

SHL Lat/Long: 40.090494/-104.858917

Survey Program: MWD+IFR+MSA

Standard Planning Report

02 February, 2018

Project: WELD-NAD83-UTMFT13N
Site: 2N-67W-35 BAJA BERG 14-35HZ PAD
Well: BAJA BERG 35-9HZ
Wellbore: Plan A
Design: Permit Rev-1

US ROCKIES WATTENBERG PLANNING

CASING DETAILS

TVD	MD	Size
1500.00	1520.60	9-5/8
7421.00	7950.40	5-1/2

WELL DETAILS: BAJA BERG 35-9HZ

GL = 4934'

RKB = 17' @ 4951.00usft (Drilling Rig)

SECTION DETAILS

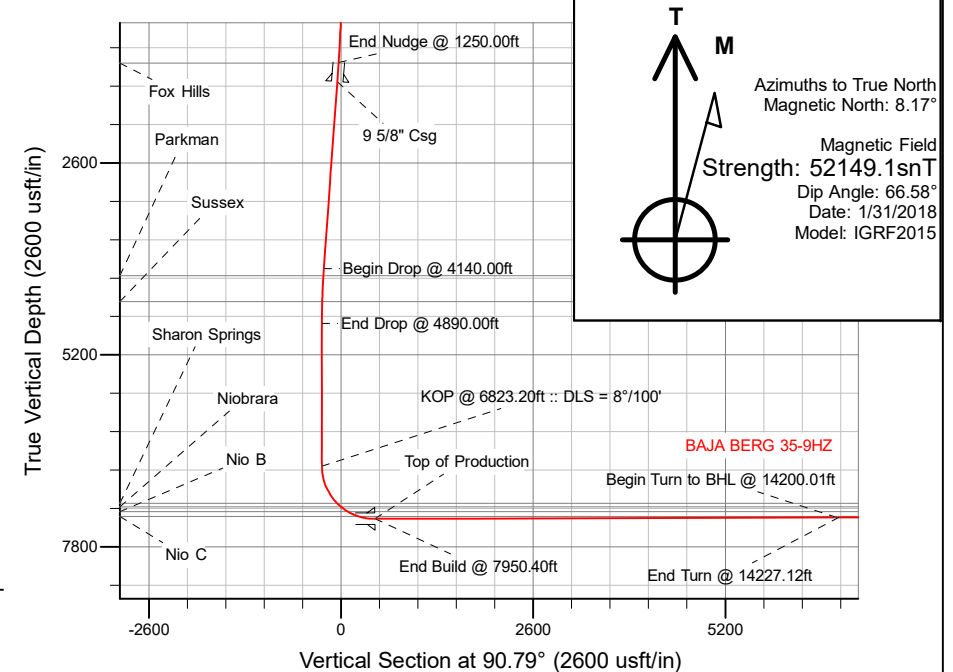
Sec	MD	Inc	Azi	TVD	+N/-S	+E/-W	Dleg	TFace	VSect	Target
1	0.00	0.00	0.00	0.00	0.00	0.00	0.00	0.00	0.00	
2	250.00	0.00	0.00	250.00	0.00	0.00	0.00	0.00	0.00	
3	1250.00	15.00	196.40	1238.62	-124.86	-36.75	1.50	196.40	-35.02	
4	4140.00	15.00	196.40	4030.14	-842.41	-247.94	0.00	0.00	-236.30	
5	4890.00	0.00	0.00	4771.60	-936.06	-275.50	2.00	180.00	-262.56	
6	6823.20	0.00	0.00	6704.80	-936.06	-275.50	0.00	0.00	-262.56	
7	7950.40	90.18	90.65	7421.00	-944.20	442.85	8.00	90.65	455.83	
8	14200.01	90.18	90.65	7401.80	-1015.00	6692.03	0.00	0.00	6705.39	BAJA BERG 35-9HZ_tgt
9	14227.12	90.18	91.06	7401.72	-1015.40	6719.14	1.50	90.02	6732.50	
10	17718.15	90.18	91.06	7391.00	-1079.73	10209.56	0.00	0.00	10223.48	BAJA BERG 35-9HZ_BHL

WELLBORE TARGET DETAILS (LAT/LONG)

Name	TVD	+N/-S	+E/-W	Latitude	Longitude
BAJA BERG 35-9HZ_SHL	0.00	0.00	0.00	40.090494	-104.858917
BAJA BERG 35-9HZ_BHL	7391.00	-1079.73	10209.56	40.087523	-104.822414

FORMATION TOP DETAILS

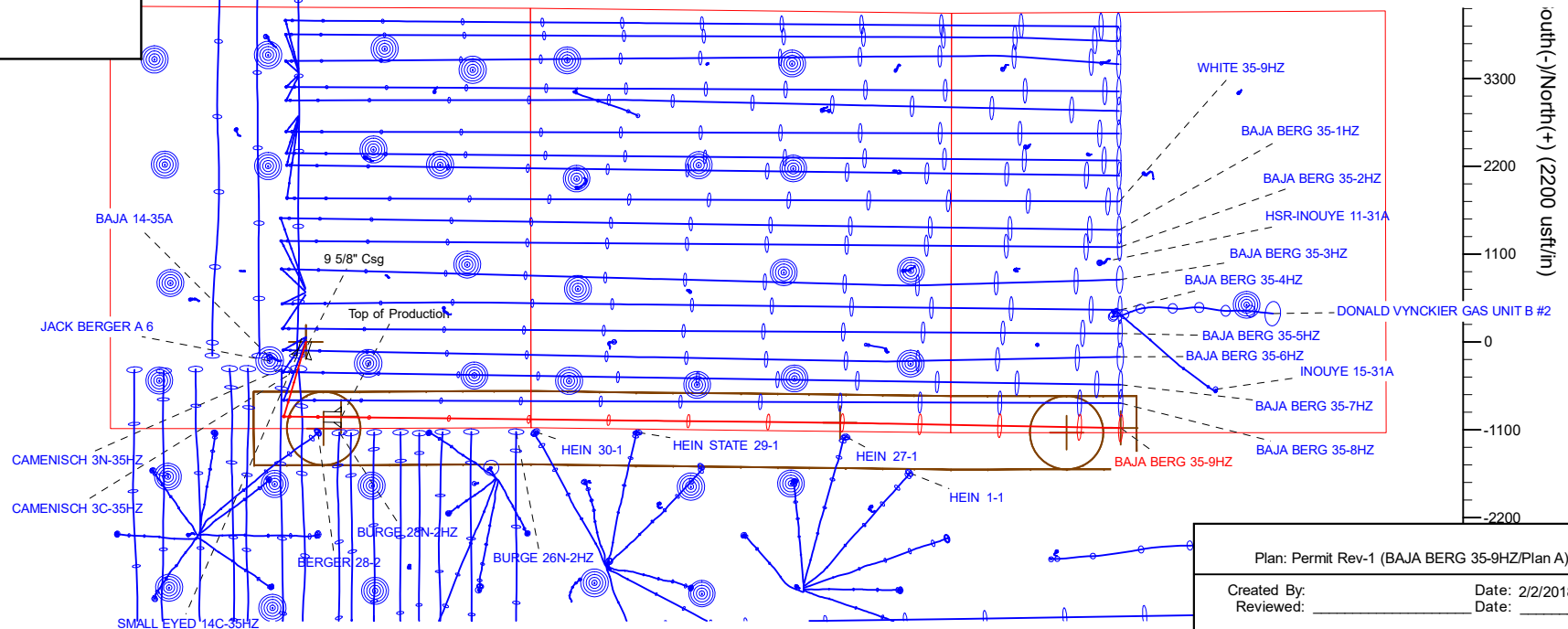
TVDPath	MDPath	Formation
1249.00	1260.75	Fox Hills
4128.00	4240.86	Parkman
4476.00	4593.87	Sussex
7208.00	7381.14	Sharon Springs
7258.00	7455.33	Niobrara
7320.00	7563.22	Nio B
7388.00	7729.94	Nio C



SHL
1087' FSL
2451' FWL

HEEL
140' FSL
2378' FEL

TOE
58' FSL
2129' FWL



Plan: Permit Rev-1 (BAJA BERG 35-9HZ/Plan A)

Created By: _____ Date: 2/2/2018
Reviewed: _____ Date: _____

Corporate Planning Report

Database:	PLANNING	Local Co-ordinate Reference:	Well BAJA BERG 35-9HZ
Company:	US ROCKIES WATTENBERG PLANNING	TVD Reference:	RKB = 17' @ 4951.00usft (Drilling Rig)
Project:	WELD-NAD83-UTMFT13N	MD Reference:	RKB = 17' @ 4951.00usft (Drilling Rig)
Site:	2N-67W-35 BAJA BERG 14-35HZ PAD	North Reference:	True
Well:	BAJA BERG 35-9HZ	Survey Calculation Method:	Minimum Curvature
Wellbore:	Plan A		
Design:	Permit Rev-1		

Project	WELD-NAD83-UTMFT13N		
Map System:	Universal Transverse Mercator (US Survey Feet)	System Datum:	Mean Sea Level
Geo Datum:	North American Datum 1983		
Map Zone:	Zone 13N (108 W to 102 W)		

Site		2N-67W-35 BAJA BERG 14-35HZ PAD			
Site Position:		Northing:	14,559,777.62 usft	Latitude:	40.090659
From:	Lat/Long	Easting:	1,679,873.96 usft	Longitude:	-104.858920
Position Uncertainty:	0.00 usft	Slot Radius:	13-3/16 "	Grid Convergence:	0.09 °

Well	BAJA BERG 35-9HZ					
Well Position	+N/-S	-60.08 usft	Northing:	14,559,717.54 usft	Latitude:	40.090494
	+E/-W	0.84 usft	Easting:	1,679,874.89 usft	Longitude:	-104.858917
Position Uncertainty		3.28 usft	Wellhead Elevation:		Ground Level:	4,934.00 usft

Wellbore	Plan A				
Magnetics	Model Name	Sample Date	Declination (°)	Dip Angle (°)	Field Strength (nT)
	IGRF2015	1/31/2018	8.17	66.58	52,149.12139483

Design	Permit Rev-1				
Audit Notes:					
Version:	Phase:	PLAN	Tie On Depth:	0.00	
Vertical Section:	Depth From (TVD) (usft)	+N/-S (usft)	+E/-W (usft)	Direction (°)	
	0.00	0.00	0.00	90.79	

Plan Survey Tool Program		Date	2/2/2018		
Depth From (usft)	Depth To (usft)	Survey (Wellbore)	Tool Name	Remarks	
1	0.00	1,500.00	Permit Rev-1 (Plan A)	APC_ISCWSA REV 2 MWD+II Fixed:v2:crustal field declinatio	
2	1,500.00	17,718.15	Permit Rev-1 (Plan A)	APC_ISCWSA REV 2 MWD+II Fixed:v2:Rockies, crustal dec +	

Corporate Planning Report

Database:	PLANNING	Local Co-ordinate Reference:	Well BAJA BERG 35-9HZ
Company:	US ROCKIES WATTENBERG PLANNING	TVD Reference:	RKB = 17' @ 4951.00usft (Drilling Rig)
Project:	WELD-NAD83-UTMFT13N	MD Reference:	RKB = 17' @ 4951.00usft (Drilling Rig)
Site:	2N-67W-35 BAJA BERG 14-35HZ PAD	North Reference:	True
Well:	BAJA BERG 35-9HZ	Survey Calculation Method:	Minimum Curvature
Wellbore:	Plan A		
Design:	Permit Rev-1		

Plan Sections										
Measured Depth (usft)	Inclination (°)	Azimuth (°)	Vertical Depth (usft)	+N/-S (usft)	+E/-W (usft)	Dogleg Rate (°/100usft)	Build Rate (°/100usft)	Turn Rate (°/100usft)	TFO (°)	Target
0.00	0.00	0.00	0.00	0.00	0.00	0.00	0.00	0.00	0.00	
250.00	0.00	0.00	250.00	0.00	0.00	0.00	0.00	0.00	0.00	
1,250.00	15.00	196.40	1,238.62	-124.86	-36.75	1.50	1.50	0.00	196.40	
4,140.00	15.00	196.40	4,030.14	-842.41	-247.94	0.00	0.00	0.00	0.00	
4,890.00	0.00	0.00	4,771.60	-936.06	-275.50	2.00	-2.00	0.00	180.00	
6,823.20	0.00	0.00	6,704.80	-936.06	-275.50	0.00	0.00	0.00	0.00	
7,950.40	90.18	90.65	7,421.00	-944.20	442.85	8.00	8.00	8.04	90.65	
14,200.01	90.18	90.65	7,401.80	-1,015.00	6,692.03	0.00	0.00	0.00	0.00	BAJA BERG 35-9HZ_
14,227.12	90.18	91.06	7,401.72	-1,015.40	6,719.14	1.50	0.00	1.50	90.02	
17,718.15	90.18	91.06	7,391.00	-1,079.73	10,209.56	0.00	0.00	0.00	0.00	BAJA BERG 35-9HZ_

Corporate Planning Report

Database:	PLANNING	Local Co-ordinate Reference:	Well BAJA BERG 35-9HZ
Company:	US ROCKIES WATTENBERG PLANNING	TVD Reference:	RKB = 17' @ 4951.00usft (Drilling Rig)
Project:	WELD-NAD83-UTMFT13N	MD Reference:	RKB = 17' @ 4951.00usft (Drilling Rig)
Site:	2N-67W-35 BAJA BERG 14-35HZ PAD	North Reference:	True
Well:	BAJA BERG 35-9HZ	Survey Calculation Method:	Minimum Curvature
Wellbore:	Plan A		
Design:	Permit Rev-1		

Planned Survey									
Measured Depth (usft)	Inclination (°)	Azimuth (°)	Vertical Depth (usft)	+N/-S (usft)	+E/-W (usft)	Vertical Section (usft)	Dogleg Rate (°/100usft)	Build Rate (°/100usft)	Turn Rate (°/100usft)
0.00	0.00	0.00	0.00	0.00	0.00	0.00	0.00	0.00	0.00
100.00	0.00	0.00	100.00	0.00	0.00	0.00	0.00	0.00	0.00
200.00	0.00	0.00	200.00	0.00	0.00	0.00	0.00	0.00	0.00
250.00	0.00	0.00	250.00	0.00	0.00	0.00	0.00	0.00	0.00
Begin Nudge @ 250.00ft									
300.00	0.75	196.40	300.00	-0.31	-0.09	-0.09	1.50	1.50	0.00
400.00	2.25	196.40	399.96	-2.83	-0.83	-0.79	1.50	1.50	0.00
500.00	3.75	196.40	499.82	-7.85	-2.31	-2.20	1.50	1.50	0.00
600.00	5.25	196.40	599.51	-15.37	-4.52	-4.31	1.50	1.50	0.00
700.00	6.75	196.40	698.96	-25.40	-7.48	-7.12	1.50	1.50	0.00
800.00	8.25	196.40	798.10	-37.92	-11.16	-10.64	1.50	1.50	0.00
900.00	9.75	196.40	896.87	-52.93	-15.58	-14.85	1.50	1.50	0.00
1,000.00	11.25	196.40	995.19	-70.41	-20.72	-19.75	1.50	1.50	0.00
1,100.00	12.75	196.40	1,093.00	-90.35	-26.59	-25.34	1.50	1.50	0.00
1,200.00	14.25	196.40	1,190.24	-112.75	-33.18	-31.63	1.50	1.50	0.00
1,250.00	15.00	196.40	1,238.62	-124.86	-36.75	-35.02	1.50	1.50	0.00
End Nudge @ 1250.00ft									
1,260.75	15.00	196.40	1,249.00	-127.53	-37.53	-35.77	0.00	0.00	0.00
Fox Hills									
1,300.00	15.00	196.40	1,286.91	-137.27	-40.40	-38.51	0.00	0.00	0.00
1,400.00	15.00	196.40	1,383.50	-162.10	-47.71	-45.47	0.00	0.00	0.00
1,500.00	15.00	196.40	1,480.10	-186.93	-55.02	-52.43	0.00	0.00	0.00
1,520.60	15.00	196.40	1,500.00	-192.05	-56.52	-53.87	0.00	0.00	0.00
9 5/8" Csg									
1,600.00	15.00	196.40	1,576.69	-211.76	-62.32	-59.40	0.00	0.00	0.00
1,700.00	15.00	196.40	1,673.28	-236.59	-69.63	-66.36	0.00	0.00	0.00
1,800.00	15.00	196.40	1,769.88	-261.42	-76.94	-73.33	0.00	0.00	0.00
1,900.00	15.00	196.40	1,866.47	-286.25	-84.25	-80.29	0.00	0.00	0.00
2,000.00	15.00	196.40	1,963.06	-311.07	-91.55	-87.26	0.00	0.00	0.00
2,100.00	15.00	196.40	2,059.65	-335.90	-98.86	-94.22	0.00	0.00	0.00
2,200.00	15.00	196.40	2,156.25	-360.73	-106.17	-101.19	0.00	0.00	0.00
2,300.00	15.00	196.40	2,252.84	-385.56	-113.48	-108.15	0.00	0.00	0.00
2,400.00	15.00	196.40	2,349.43	-410.39	-120.78	-115.11	0.00	0.00	0.00
2,500.00	15.00	196.40	2,446.02	-435.22	-128.09	-122.08	0.00	0.00	0.00
2,600.00	15.00	196.40	2,542.62	-460.05	-135.40	-129.04	0.00	0.00	0.00
2,700.00	15.00	196.40	2,639.21	-484.88	-142.71	-136.01	0.00	0.00	0.00
2,800.00	15.00	196.40	2,735.80	-509.71	-150.01	-142.97	0.00	0.00	0.00
2,900.00	15.00	196.40	2,832.39	-534.53	-157.32	-149.94	0.00	0.00	0.00
3,000.00	15.00	196.40	2,928.99	-559.36	-164.63	-156.90	0.00	0.00	0.00
3,100.00	15.00	196.40	3,025.58	-584.19	-171.94	-163.87	0.00	0.00	0.00
3,200.00	15.00	196.40	3,122.17	-609.02	-179.24	-170.83	0.00	0.00	0.00
3,300.00	15.00	196.40	3,218.76	-633.85	-186.55	-177.80	0.00	0.00	0.00
3,400.00	15.00	196.40	3,315.36	-658.68	-193.86	-184.76	0.00	0.00	0.00
3,500.00	15.00	196.40	3,411.95	-683.51	-201.17	-191.72	0.00	0.00	0.00
3,600.00	15.00	196.40	3,508.54	-708.34	-208.47	-198.69	0.00	0.00	0.00
3,700.00	15.00	196.40	3,605.13	-733.17	-215.78	-205.65	0.00	0.00	0.00
3,800.00	15.00	196.40	3,701.73	-757.99	-223.09	-212.62	0.00	0.00	0.00
3,900.00	15.00	196.40	3,798.32	-782.82	-230.40	-219.58	0.00	0.00	0.00
4,000.00	15.00	196.40	3,894.91	-807.65	-237.71	-226.55	0.00	0.00	0.00
4,100.00	15.00	196.40	3,991.50	-832.48	-245.01	-233.51	0.00	0.00	0.00
4,140.00	15.00	196.40	4,030.14	-842.41	-247.94	-236.30	0.00	0.00	0.00
Begin Drop @ 4140.00ft									
4,200.00	13.80	196.40	4,088.26	-856.73	-252.15	-240.31	2.00	-2.00	0.00
4,240.86	12.98	196.40	4,128.00	-865.80	-254.82	-242.86	2.00	-2.00	0.00

Corporate Planning Report

Database:	PLANNING	Local Co-ordinate Reference:	Well BAJA BERG 35-9HZ
Company:	US ROCKIES WATTENBERG PLANNING	TVD Reference:	RKB = 17' @ 4951.00usft (Drilling Rig)
Project:	WELD-NAD83-UTMFT13N	MD Reference:	RKB = 17' @ 4951.00usft (Drilling Rig)
Site:	2N-67W-35 BAJA BERG 14-35HZ PAD	North Reference:	True
Well:	BAJA BERG 35-9HZ	Survey Calculation Method:	Minimum Curvature
Wellbore:	Plan A		
Design:	Permit Rev-1		

Planned Survey									
Measured Depth (usft)	Inclination (°)	Azimuth (°)	Vertical Depth (usft)	+N/-S (usft)	+E/-W (usft)	Vertical Section (usft)	Dogleg Rate (°/100usft)	Build Rate (°/100usft)	Turn Rate (°/100usft)
Parkman									
4,300.00	11.80	196.40	4,185.77	-877.98	-258.40	-246.27	2.00	-2.00	0.00
4,400.00	9.80	196.40	4,283.99	-895.95	-263.69	-251.32	2.00	-2.00	0.00
4,500.00	7.80	196.40	4,382.81	-910.63	-268.01	-255.43	2.00	-2.00	0.00
4,593.87	5.92	196.40	4,476.00	-921.39	-271.18	-258.45	2.00	-2.00	0.00
Sussex									
4,600.00	5.80	196.40	4,482.10	-921.99	-271.36	-258.62	2.00	-2.00	0.00
4,700.00	3.80	196.40	4,581.74	-930.01	-273.72	-260.87	2.00	-2.00	0.00
4,800.00	1.80	196.40	4,681.62	-934.70	-275.10	-262.18	2.00	-2.00	0.00
4,890.00	0.00	0.00	4,771.60	-936.06	-275.50	-262.56	2.00	-2.00	0.00
End Drop @ 4890.00ft									
4,900.00	0.00	0.00	4,781.60	-936.06	-275.50	-262.56	0.00	0.00	0.00
5,000.00	0.00	0.00	4,881.60	-936.06	-275.50	-262.56	0.00	0.00	0.00
5,100.00	0.00	0.00	4,981.60	-936.06	-275.50	-262.56	0.00	0.00	0.00
5,200.00	0.00	0.00	5,081.60	-936.06	-275.50	-262.56	0.00	0.00	0.00
5,300.00	0.00	0.00	5,181.60	-936.06	-275.50	-262.56	0.00	0.00	0.00
5,400.00	0.00	0.00	5,281.60	-936.06	-275.50	-262.56	0.00	0.00	0.00
5,500.00	0.00	0.00	5,381.60	-936.06	-275.50	-262.56	0.00	0.00	0.00
5,600.00	0.00	0.00	5,481.60	-936.06	-275.50	-262.56	0.00	0.00	0.00
5,700.00	0.00	0.00	5,581.60	-936.06	-275.50	-262.56	0.00	0.00	0.00
5,800.00	0.00	0.00	5,681.60	-936.06	-275.50	-262.56	0.00	0.00	0.00
5,900.00	0.00	0.00	5,781.60	-936.06	-275.50	-262.56	0.00	0.00	0.00
6,000.00	0.00	0.00	5,881.60	-936.06	-275.50	-262.56	0.00	0.00	0.00
6,100.00	0.00	0.00	5,981.60	-936.06	-275.50	-262.56	0.00	0.00	0.00
6,200.00	0.00	0.00	6,081.60	-936.06	-275.50	-262.56	0.00	0.00	0.00
6,300.00	0.00	0.00	6,181.60	-936.06	-275.50	-262.56	0.00	0.00	0.00
6,400.00	0.00	0.00	6,281.60	-936.06	-275.50	-262.56	0.00	0.00	0.00
6,500.00	0.00	0.00	6,381.60	-936.06	-275.50	-262.56	0.00	0.00	0.00
6,600.00	0.00	0.00	6,481.60	-936.06	-275.50	-262.56	0.00	0.00	0.00
6,700.00	0.00	0.00	6,581.60	-936.06	-275.50	-262.56	0.00	0.00	0.00
6,800.00	0.00	0.00	6,681.60	-936.06	-275.50	-262.56	0.00	0.00	0.00
6,823.20	0.00	0.00	6,704.80	-936.06	-275.50	-262.56	0.00	0.00	0.00
KOP @ 6823.20ft :: DLS = 8°/100'									
6,900.00	6.14	90.65	6,781.46	-936.10	-271.38	-258.45	8.00	8.00	0.00
7,000.00	14.14	90.65	6,879.81	-936.30	-253.79	-240.85	8.00	8.00	0.00
7,100.00	22.14	90.65	6,974.76	-936.66	-222.67	-209.74	8.00	8.00	0.00
7,200.00	30.14	90.65	7,064.46	-937.15	-178.65	-165.71	8.00	8.00	0.00
7,300.00	38.14	90.65	7,147.16	-937.79	-122.57	-109.63	8.00	8.00	0.00
7,381.14	44.64	90.65	7,208.00	-938.40	-68.95	-56.01	8.00	8.00	0.00
Sharon Springs									
7,400.00	46.14	90.65	7,221.24	-938.55	-55.53	-42.58	8.00	8.00	0.00
7,455.33	50.57	90.65	7,258.00	-939.02	-14.19	-1.24	8.00	8.00	0.00
Niobrara									
7,500.00	54.14	90.65	7,285.28	-939.42	21.17	34.12	8.00	8.00	0.00
7,563.22	59.20	90.65	7,320.00	-940.02	73.97	86.93	8.00	8.00	0.00
Nio B									
7,600.00	62.14	90.65	7,338.01	-940.38	106.03	118.99	8.00	8.00	0.00
7,700.00	70.14	90.65	7,378.42	-941.41	197.41	210.37	8.00	8.00	0.00
7,729.94	72.54	90.65	7,388.00	-941.74	225.77	238.73	8.00	8.00	0.00
Nio C									
7,800.00	78.14	90.65	7,405.72	-942.50	293.52	306.49	8.00	8.00	0.00
7,900.00	86.14	90.65	7,419.38	-943.62	392.49	405.47	8.00	8.00	0.00
7,950.40	90.18	90.65	7,421.00	-944.20	442.85	455.83	8.00	8.00	0.00

Corporate Planning Report

Database:	PLANNING	Local Co-ordinate Reference:	Well BAJA BERG 35-9HZ
Company:	US ROCKIES WATTENBERG PLANNING	TVD Reference:	RKB = 17' @ 4951.00usft (Drilling Rig)
Project:	WELD-NAD83-UTMFT13N	MD Reference:	RKB = 17' @ 4951.00usft (Drilling Rig)
Site:	2N-67W-35 BAJA BERG 14-35HZ PAD	North Reference:	True
Well:	BAJA BERG 35-9HZ	Survey Calculation Method:	Minimum Curvature
Wellbore:	Plan A		
Design:	Permit Rev-1		

Planned Survey									
Measured Depth (usft)	Inclination (°)	Azimuth (°)	Vertical Depth (usft)	+N/-S (usft)	+E/-W (usft)	Vertical Section (usft)	Dogleg Rate (°/100usft)	Build Rate (°/100usft)	Turn Rate (°/100usft)
End Build @ 7950.40ft - Top of Production									
8,000.00	90.18	90.65	7,420.85	-944.76	492.45	505.43	0.00	0.00	0.00
8,100.00	90.18	90.65	7,420.54	-945.89	592.44	605.43	0.00	0.00	0.00
8,200.00	90.18	90.65	7,420.23	-947.02	692.44	705.43	0.00	0.00	0.00
8,300.00	90.18	90.65	7,419.92	-948.16	792.43	805.43	0.00	0.00	0.00
8,400.00	90.18	90.65	7,419.62	-949.29	892.42	905.43	0.00	0.00	0.00
8,500.00	90.18	90.65	7,419.31	-950.42	992.42	1,005.43	0.00	0.00	0.00
8,600.00	90.18	90.65	7,419.00	-951.56	1,092.41	1,105.43	0.00	0.00	0.00
8,700.00	90.18	90.65	7,418.69	-952.69	1,192.40	1,205.43	0.00	0.00	0.00
8,800.00	90.18	90.65	7,418.39	-953.82	1,292.40	1,305.42	0.00	0.00	0.00
8,900.00	90.18	90.65	7,418.08	-954.95	1,392.39	1,405.42	0.00	0.00	0.00
9,000.00	90.18	90.65	7,417.77	-956.09	1,492.38	1,505.42	0.00	0.00	0.00
9,100.00	90.18	90.65	7,417.47	-957.22	1,592.38	1,605.42	0.00	0.00	0.00
9,200.00	90.18	90.65	7,417.16	-958.35	1,692.37	1,705.42	0.00	0.00	0.00
9,300.00	90.18	90.65	7,416.85	-959.49	1,792.36	1,805.42	0.00	0.00	0.00
9,400.00	90.18	90.65	7,416.54	-960.62	1,892.35	1,905.42	0.00	0.00	0.00
9,500.00	90.18	90.65	7,416.24	-961.75	1,992.35	2,005.42	0.00	0.00	0.00
9,600.00	90.18	90.65	7,415.93	-962.88	2,092.34	2,105.42	0.00	0.00	0.00
9,700.00	90.18	90.65	7,415.62	-964.02	2,192.33	2,205.42	0.00	0.00	0.00
9,800.00	90.18	90.65	7,415.32	-965.15	2,292.33	2,305.42	0.00	0.00	0.00
9,900.00	90.18	90.65	7,415.01	-966.28	2,392.32	2,405.42	0.00	0.00	0.00
10,000.00	90.18	90.65	7,414.70	-967.42	2,492.31	2,505.42	0.00	0.00	0.00
10,100.00	90.18	90.65	7,414.39	-968.55	2,592.31	2,605.41	0.00	0.00	0.00
10,200.00	90.18	90.65	7,414.09	-969.68	2,692.30	2,705.41	0.00	0.00	0.00
10,300.00	90.18	90.65	7,413.78	-970.82	2,792.29	2,805.41	0.00	0.00	0.00
10,400.00	90.18	90.65	7,413.47	-971.95	2,892.29	2,905.41	0.00	0.00	0.00
10,500.00	90.18	90.65	7,413.17	-973.08	2,992.28	3,005.41	0.00	0.00	0.00
10,600.00	90.18	90.65	7,412.86	-974.21	3,092.27	3,105.41	0.00	0.00	0.00
10,700.00	90.18	90.65	7,412.55	-975.35	3,192.27	3,205.41	0.00	0.00	0.00
10,800.00	90.18	90.65	7,412.24	-976.48	3,292.26	3,305.41	0.00	0.00	0.00
10,900.00	90.18	90.65	7,411.94	-977.61	3,392.25	3,405.41	0.00	0.00	0.00
11,000.00	90.18	90.65	7,411.63	-978.75	3,492.24	3,505.41	0.00	0.00	0.00
11,100.00	90.18	90.65	7,411.32	-979.88	3,592.24	3,605.41	0.00	0.00	0.00
11,200.00	90.18	90.65	7,411.02	-981.01	3,692.23	3,705.41	0.00	0.00	0.00
11,300.00	90.18	90.65	7,410.71	-982.14	3,792.22	3,805.41	0.00	0.00	0.00
11,400.00	90.18	90.65	7,410.40	-983.28	3,892.22	3,905.40	0.00	0.00	0.00
11,500.00	90.18	90.65	7,410.09	-984.41	3,992.21	4,005.40	0.00	0.00	0.00
11,600.00	90.18	90.65	7,409.79	-985.54	4,092.20	4,105.40	0.00	0.00	0.00
11,700.00	90.18	90.65	7,409.48	-986.68	4,192.20	4,205.40	0.00	0.00	0.00
11,800.00	90.18	90.65	7,409.17	-987.81	4,292.19	4,305.40	0.00	0.00	0.00
11,900.00	90.18	90.65	7,408.87	-988.94	4,392.18	4,405.40	0.00	0.00	0.00
12,000.00	90.18	90.65	7,408.56	-990.08	4,492.18	4,505.40	0.00	0.00	0.00
12,100.00	90.18	90.65	7,408.25	-991.21	4,592.17	4,605.40	0.00	0.00	0.00
12,200.00	90.18	90.65	7,407.94	-992.34	4,692.16	4,705.40	0.00	0.00	0.00
12,300.00	90.18	90.65	7,407.64	-993.47	4,792.16	4,805.40	0.00	0.00	0.00
12,400.00	90.18	90.65	7,407.33	-994.61	4,892.15	4,905.40	0.00	0.00	0.00
12,500.00	90.18	90.65	7,407.02	-995.74	4,992.14	5,005.40	0.00	0.00	0.00
12,600.00	90.18	90.65	7,406.72	-996.87	5,092.13	5,105.40	0.00	0.00	0.00
12,700.00	90.18	90.65	7,406.41	-998.01	5,192.13	5,205.39	0.00	0.00	0.00
12,800.00	90.18	90.65	7,406.10	-999.14	5,292.12	5,305.39	0.00	0.00	0.00
12,900.00	90.18	90.65	7,405.79	-1,000.27	5,392.11	5,405.39	0.00	0.00	0.00
13,000.00	90.18	90.65	7,405.49	-1,001.40	5,492.11	5,505.39	0.00	0.00	0.00
13,100.00	90.18	90.65	7,405.18	-1,002.54	5,592.10	5,605.39	0.00	0.00	0.00

Corporate Planning Report

Database: Company: Project: Site: Well: Wellbore: Design:	PLANNING US ROCKIES WATTENBERG PLANNING WELD-NAD83-UTMFT13N 2N-67W-35 BAJA BERG 14-35HZ PAD BAJA BERG 35-9HZ Plan A Permit Rev-1	Local Co-ordinate Reference: TVD Reference: MD Reference: North Reference: Survey Calculation Method:	Well BAJA BERG 35-9HZ RKB = 17' @ 4951.00usft (Drilling Rig) RKB = 17' @ 4951.00usft (Drilling Rig) True Minimum Curvature
--	--	--	--

Planned Survey										
Measured Depth (usft)	Inclination (°)	Azimuth (°)	Vertical Depth (usft)	+N/-S (usft)	+E/-W (usft)	Vertical Section (usft)	Dogleg Rate (°/100usft)	Build Rate (°/100usft)	Turn Rate (°/100usft)	
13,200.00	90.18	90.65	7,404.87	-1,003.67	5,692.09	5,705.39	0.00	0.00	0.00	
13,300.00	90.18	90.65	7,404.56	-1,004.80	5,792.09	5,805.39	0.00	0.00	0.00	
13,400.00	90.18	90.65	7,404.26	-1,005.94	5,892.08	5,905.39	0.00	0.00	0.00	
13,500.00	90.18	90.65	7,403.95	-1,007.07	5,992.07	6,005.39	0.00	0.00	0.00	
13,600.00	90.18	90.65	7,403.64	-1,008.20	6,092.07	6,105.39	0.00	0.00	0.00	
13,700.00	90.18	90.65	7,403.34	-1,009.34	6,192.06	6,205.39	0.00	0.00	0.00	
13,800.00	90.18	90.65	7,403.03	-1,010.47	6,292.05	6,305.39	0.00	0.00	0.00	
13,900.00	90.18	90.65	7,402.72	-1,011.60	6,392.04	6,405.38	0.00	0.00	0.00	
14,000.00	90.18	90.65	7,402.41	-1,012.73	6,492.04	6,505.38	0.00	0.00	0.00	
14,100.00	90.18	90.65	7,402.11	-1,013.87	6,592.03	6,605.38	0.00	0.00	0.00	
14,200.00	90.18	90.65	7,401.80	-1,015.00	6,692.02	6,705.38	0.00	0.00	0.00	
14,200.01	90.18	90.65	7,401.80	-1,015.00	6,692.03	6,705.39	0.00	0.00	0.00	
Begin Turn to BHL @ 14200.01ft										
14,227.12	90.18	91.06	7,401.72	-1,015.40	6,719.14	6,732.50	1.50	0.00	1.50	
End Turn @ 14227.12ft										
14,300.00	90.18	91.06	7,401.49	-1,016.75	6,792.01	6,805.38	0.00	0.00	0.00	
14,400.00	90.18	91.06	7,401.19	-1,018.59	6,891.99	6,905.38	0.00	0.00	0.00	
14,500.00	90.18	91.06	7,400.88	-1,020.43	6,991.97	7,005.38	0.00	0.00	0.00	
14,600.00	90.18	91.06	7,400.57	-1,022.27	7,091.96	7,105.38	0.00	0.00	0.00	
14,700.00	90.18	91.06	7,400.27	-1,024.12	7,191.94	7,205.38	0.00	0.00	0.00	
14,800.00	90.18	91.06	7,399.96	-1,025.96	7,291.92	7,305.37	0.00	0.00	0.00	
14,900.00	90.18	91.06	7,399.65	-1,027.80	7,391.90	7,405.37	0.00	0.00	0.00	
15,000.00	90.18	91.06	7,399.34	-1,029.64	7,491.89	7,505.37	0.00	0.00	0.00	
15,100.00	90.18	91.06	7,399.04	-1,031.49	7,591.87	7,605.37	0.00	0.00	0.00	
15,200.00	90.18	91.06	7,398.73	-1,033.33	7,691.85	7,705.37	0.00	0.00	0.00	
15,300.00	90.18	91.06	7,398.42	-1,035.17	7,791.83	7,805.37	0.00	0.00	0.00	
15,400.00	90.18	91.06	7,398.12	-1,037.02	7,891.82	7,905.36	0.00	0.00	0.00	
15,500.00	90.18	91.06	7,397.81	-1,038.86	7,991.80	8,005.36	0.00	0.00	0.00	
15,600.00	90.18	91.06	7,397.50	-1,040.70	8,091.78	8,105.36	0.00	0.00	0.00	
15,700.00	90.18	91.06	7,397.20	-1,042.54	8,191.76	8,205.36	0.00	0.00	0.00	
15,800.00	90.18	91.06	7,396.89	-1,044.39	8,291.75	8,305.36	0.00	0.00	0.00	
15,900.00	90.18	91.06	7,396.58	-1,046.23	8,391.73	8,405.36	0.00	0.00	0.00	
16,000.00	90.18	91.06	7,396.27	-1,048.07	8,491.71	8,505.36	0.00	0.00	0.00	
16,100.00	90.18	91.06	7,395.97	-1,049.91	8,591.69	8,605.35	0.00	0.00	0.00	
16,200.00	90.18	91.06	7,395.66	-1,051.76	8,691.68	8,705.35	0.00	0.00	0.00	
16,300.00	90.18	91.06	7,395.35	-1,053.60	8,791.66	8,805.35	0.00	0.00	0.00	
16,400.00	90.18	91.06	7,395.05	-1,055.44	8,891.64	8,905.35	0.00	0.00	0.00	
16,500.00	90.18	91.06	7,394.74	-1,057.28	8,991.62	9,005.35	0.00	0.00	0.00	
16,600.00	90.18	91.06	7,394.43	-1,059.13	9,091.61	9,105.35	0.00	0.00	0.00	
16,700.00	90.18	91.06	7,394.13	-1,060.97	9,191.59	9,205.34	0.00	0.00	0.00	
16,800.00	90.18	91.06	7,393.82	-1,062.81	9,291.57	9,305.34	0.00	0.00	0.00	
16,900.00	90.18	91.06	7,393.51	-1,064.65	9,391.55	9,405.34	0.00	0.00	0.00	
17,000.00	90.18	91.06	7,393.20	-1,066.50	9,491.54	9,505.34	0.00	0.00	0.00	
17,100.00	90.18	91.06	7,392.90	-1,068.34	9,591.52	9,605.34	0.00	0.00	0.00	
17,200.00	90.18	91.06	7,392.59	-1,070.18	9,691.50	9,705.34	0.00	0.00	0.00	
17,300.00	90.18	91.06	7,392.28	-1,072.03	9,791.48	9,805.33	0.00	0.00	0.00	
17,400.00	90.18	91.06	7,391.98	-1,073.87	9,891.47	9,905.33	0.00	0.00	0.00	
17,500.00	90.18	91.06	7,391.67	-1,075.71	9,991.45	10,005.33	0.00	0.00	0.00	
17,600.00	90.18	91.06	7,391.36	-1,077.55	10,091.43	10,105.33	0.00	0.00	0.00	
17,700.00	90.18	91.06	7,391.06	-1,079.40	10,191.42	10,205.33	0.00	0.00	0.00	
17,718.15	90.18	91.06	7,391.00	-1,079.73	10,209.56	10,223.48	0.00	0.00	0.00	
TD Well @ 17718.15ft										

Corporate Planning Report

Database:	PLANNING	Local Co-ordinate Reference:	Well BAJA BERG 35-9HZ
Company:	US ROCKIES WATTENBERG PLANNING	TVD Reference:	RKB = 17' @ 4951.00usft (Drilling Rig)
Project:	WELD-NAD83-UTMFT13N	MD Reference:	RKB = 17' @ 4951.00usft (Drilling Rig)
Site:	2N-67W-35 BAJA BERG 14-35HZ PAD	North Reference:	True
Well:	BAJA BERG 35-9HZ	Survey Calculation Method:	Minimum Curvature
Wellbore:	Plan A		
Design:	Permit Rev-1		

Casing Points					
Measured Depth (usft)	Vertical Depth (usft)	Name	Casing Diameter (")	Hole Diameter (")	
1,520.60	1,500.00	9 5/8" Csg	9-5/8	13-1/2	
7,950.40	7,421.00	Top of Production	5-1/2	7-7/8	

Formations						
Measured Depth (usft)	Vertical Depth (usft)	Name	Lithology	Dip (°)	Dip Direction (°)	
1,260.75	1,249.00	Fox Hills				
4,240.86	4,128.00	Parkman				
4,593.87	4,476.00	Sussex				
7,381.14	7,208.00	Sharon Springs				
7,455.33	7,258.00	Niobrara				
7,563.22	7,320.00	Nio B				
7,729.94	7,388.00	Nio C				

Plan Annotations					
Measured Depth (usft)	Vertical Depth (usft)	Local Coordinates		Comment	
		+N/-S (usft)	+E/-W (usft)		
250.00	250.00	0.00	0.00	Begin Nudge @ 250.00ft	
1,250.00	1,238.62	-124.86	-36.75	End Nudge @ 1250.00ft	
4,140.00	4,030.14	-842.41	-247.94	Begin Drop @ 4140.00ft	
4,890.00	4,771.60	-936.06	-275.50	End Drop @ 4890.00ft	
6,823.20	6,704.80	-936.06	-275.50	KOP @ 6823.20ft :: DLS = 8°/100'	
7,950.40	7,421.00	-944.20	442.85	End Build @ 7950.40ft	
14,200.01	7,401.80	-1,015.00	6,692.03	Begin Turn to BHL @ 14200.01ft	
14,227.12	7,401.72	-1,015.40	6,719.14	End Turn @ 14227.12ft	
17,718.15	7,391.00	-1,079.73	10,209.56	TD Well @ 17718.15ft	