

T2N, R67W

N. 1/4 COR.
SEC. 35, T2N, R67W
FOUND 2" ALUM. CAP
L.S. NO. 25937

NW. COR.
SEC. 35, T2N, R67W
FOUND 3 1/4" ALUM. CAP
P.L.S. NO. 13258

NE. COR.
SEC. 35, T2N, R67W
FOUND 3 1/4" ALUM. CAP
L.S. NO. 22098

SURFACE LOCATION: NAD 83
GROUND ELEVATION= 4932.6'
LATITUDE= 40.090494°
LONGITUDE= -104.858917°
LATITUDE= 40°05'25.779"
LONGITUDE= -104°51'32.099"
HEEL LOCATION: NAD 83
LATITUDE= 40.087899°
LONGITUDE= -104.857337°
LATITUDE= 40°05'16.435"
LONGITUDE= -104°51'26.413"
BOTTOM HOLE LOCATION: NAD 83
LATITUDE= 40.087523°
LONGITUDE= -104.822414°
LATITUDE= 40°05'15.083"
LONGITUDE= -104°49'20.690"

CENTER 1/4 COR.
SEC. 35, T2N, R67W
FOUND 2" ALUM. CAP
ILLEGIBLE

35

W. 1/4 COR.
SEC. 35, T2N, R67W
FOUND 2" ALUM. CAP
L.S. NO. 25937

S 89°39'54" W
1317.75' (M)

S 89°38'28" W
1317.28' (M)

S 89°39'06" W
2634.36' (M)

CW. 1/16 COR.
SEC. 35, T2N, R67W
SET 2 1/2" ALUM. CAP
P.L.S. NO. 38512

N. 1/16 COR.
SEC. 35 & SEC. 36
T2N, R67W
FOUND 3 1/4" ALUM. CAP
P.L.S. NO. 23027

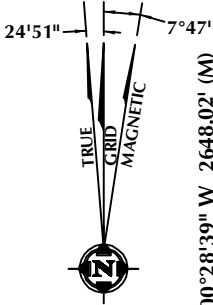
E. 1/4 COR.
SEC. 35, T2N, R67W
FOUND 2 1/2" ALUM. CAP
L.S. NO. 34980

S. 1/16 COR.
SEC. 35 & SEC. 36
T2N, R67W
SET 2 1/2" ALUM. CAP
P.L.S. NO. 38512

WELLBORE
CONTINUES INTO
SECTION 36

SE. COR.
SEC. 35, T2N, R67W
FOUND 2" ALUM. CAP
L.S. NO. 25937

S. 1/4 COR.
SEC. 35, T2N, R67W
FOUND 2 1/2" ALUM. CAP
P.L.S. NO. 24307



BAJA BERG 35-9HZ
SURFACE LOCATION

2451'

N 01°15'24" W
2642.76' (M)

1087'

HEEL LOCATION

140'

2378'

S 89°32'00" W 2670.96' (M)

S 89°21'13" W 2598.64' (M)

CERTIFICATE OF SURVEYOR:

THIS IS TO CERTIFY THAT THE ABOVE PLAT WAS PREPARED FROM FIELD NOTES OF ACTUAL SURVEYS MADE BY ME OR UNDER MY SUPERVISION AND THAT THE SAME ARE TRUE AND CORRECT TO THE BEST OF MY KNOWLEDGE AND BELIEF. THIS CERTIFICATE DOES NOT REPRESENT A LAND SURVEY PLAT OR IMPROVEMENT SURVEY PLAT AS DEFINED BY C.R.S. 38-5-102 AND CANNOT BE RELIED UPON TO DETERMINE OWNERSHIP.

Randall K. French
2/26/18
PROFESSIONAL LAND SURVEYOR
COLORADO REGISTRATION NUMBER 38512

NOTICE:
ACCORDING TO COLORADO STATE LAW YOU MUST COMMENCE A LEGAL ACTION BASED UPON ANY DEFECT IN THIS SURVEY WITHIN THREE YEARS AFTER YOU FIRST DISCOVER SUCH DEFECT. IN NO EVENT MAY ANY ACTION BASED UPON ANY DEFECT IN THIS SURVEY BE COMMENCED MORE THAN TEN YEARS FROM THE DATE ON THE CERTIFICATION SHOWN HEREON.

NOTE:
MAGNETIC NORTH IS CURRENT AS OF 9/25/2017.
MAGNETIC NORTH CHANGES WEST 0°06' PER YEAR.



SCALE: 1" = 1000'

NOTES:

- ▲ INDICATES SECTION CORNER.
- INDICATES CALCULATED CORNER.
- ELEVATION BASED ON NAVD88 (GEOID12B).
- BASIS OF BEARING DERIVED FROM COLORADO COORDINATE SYSTEM OF 1983 NORTH ZONE.
- ALL MEASURED DISTANCES ARE GRID.
- COMBINED SCALE FACTOR: .99972874 CALCULATED FROM THE E. 1/4 CORNER OF SECTION 35, T2N, R67W.
- OPERATOR: ROB WILSON / PDOP = 1.6.
- SEE ADDENDUM TO WELL LOCATION CERTIFICATE FOR EXISTING IMPROVEMENTS WITHIN 500' OF THE WELL PAD.
- WELL FOOTAGES ARE MEASURED AT RIGHT ANGLES TO THE SECTION LINES.
- THE BOTTOM OF HOLE BEARS S89°37'28"E, 9772' FROM THE HEEL LOCATION.

WELL PAD - BAJA BERG 14-35HZ

BAJA BERG 35-9HZ
WELL LOCATION CERTIFICATE
1087' FSL & 2451' FWL SESW (SURFACE)
140' FSL & 2378' FWL SWSE (HEEL)
LOCATED IN SECTION 35
T2N, R67W, 6TH P.M.
59' FSL & 2130' FWL LOT 1 (SESW) (BOTTOM)
LOCATED IN SECTION 31
T2N, R66W, 6TH P.M.
WELD COUNTY, COLORADO

**Kerr-McGee Oil &
Gas Onshore L.P.**

1099 18th Street
Denver, Colorado 80202



CONSULTING, LLC

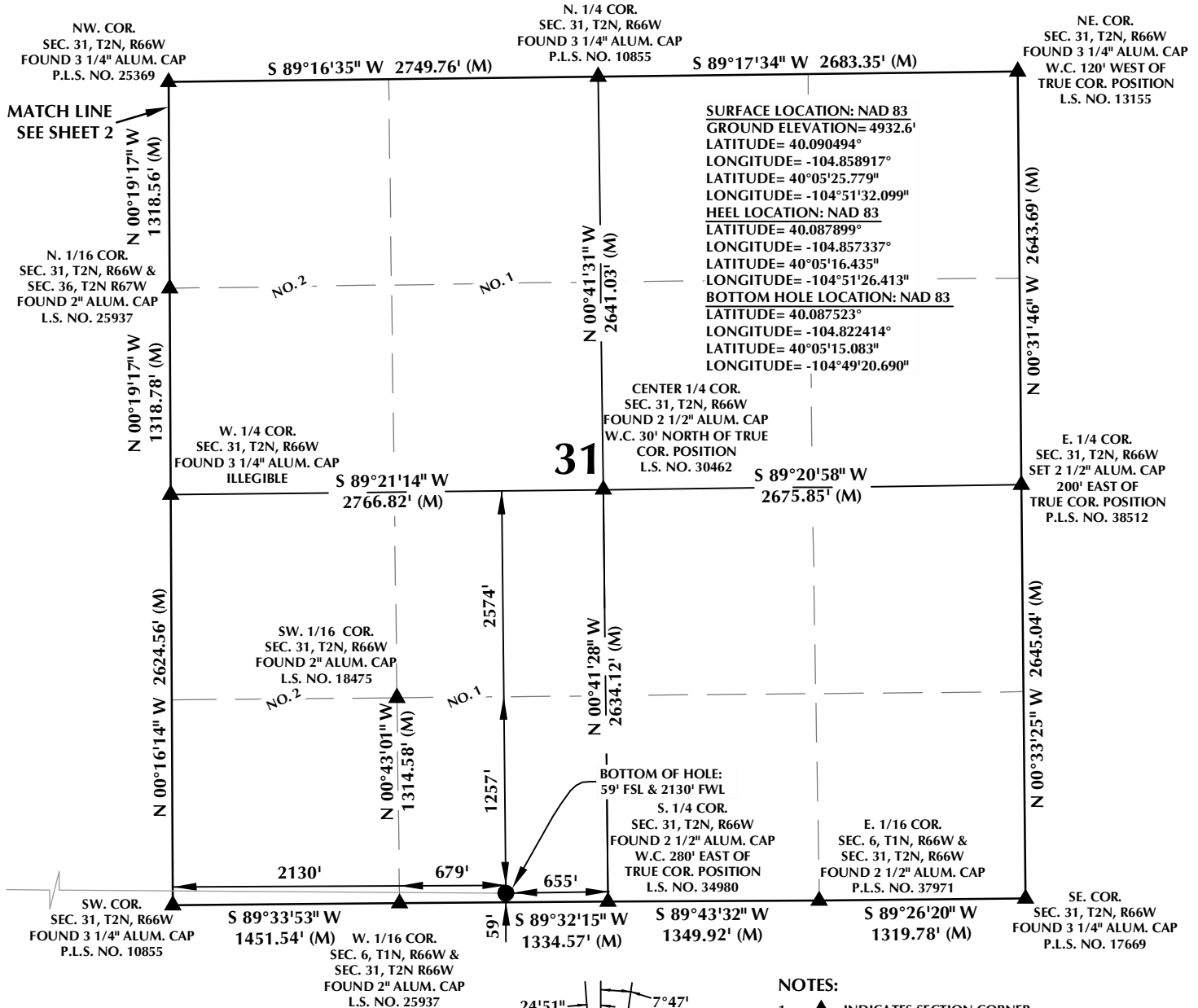
SHERIDAN OFFICE
1095 Saberton Avenue
Sheridan, Wyoming 82801
Phone 307-674-0609

LOVELAND OFFICE
1635 Foxtrail Drive, Suite 204
Loveland, Colorado 80538
Phone 970-776-4331

DRAFTED BY:	LMO	CHECKED BY:	RKF	SHEET NO:
DATE DRAFTED:	2/26/18	DATE SURVEYED:	2/12/18	1
REVISED:		FILE NAME:	16-136	1 OF 3

K:\ANADARKO\2016\2016 136 BAJA BERG T2N R67W SEC 35\PLATS\14-35HZ\BAJA BERG 14-35HZ PLAT.dwg, 2/23/2018 8:17:49 AM, ethan

T2N, R66W



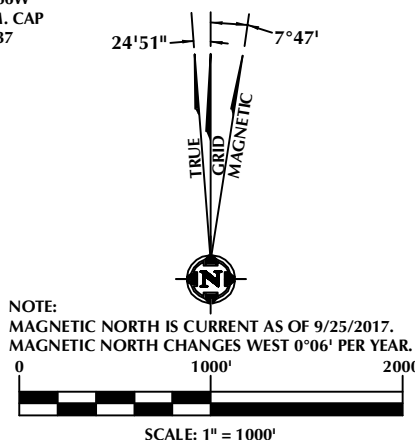
CERTIFICATE OF SURVEYOR:

THIS IS TO CERTIFY THAT THE ABOVE PLAT WAS PREPARED FROM FIELD NOTES OF ACTUAL SURVEYS MADE BY ME OR UNDER MY SUPERVISION AND THAT THE SAME ARE TRUE AND CORRECT TO THE BEST OF MY KNOWLEDGE AND BELIEF. THIS CERTIFICATE DOES NOT REPRESENT A LAND SURVEY PLAT OR IMPROVEMENT SURVEY PLAT AS DEFINED BY C.R.S. 38-5-102 AND CANNOT BE RELIED UPON TO DETERMINE OWNERSHIP.

Randall K. French
 RANDALL K. FRENCH
 PROFESSIONAL LAND SURVEYOR
 COLORADO REGISTRATION NUMBER 38512

2/26/18
 RANDALL K. FRENCH
 PROFESSIONAL LAND SURVEYOR
 COLORADO REGISTRATION NUMBER 38512

NOTICE:
 ACCORDING TO COLORADO STATE LAW YOU MUST COME TO COURT AND TAKE LEGAL ACTION BASED UPON ANY DEFECT IN THIS SURVEY WITHIN THREE YEARS AFTER YOU FIRST DISCOVER SUCH DEFECT. IN NO EVENT MAY ANY ACTION BASED UPON ANY DEFECT IN THIS SURVEY BE COMMENCED MORE THAN TEN YEARS FROM THE DATE ON THE CERTIFICATION SHOWN HEREON.



NOTES:

- ▲ INDICATES SECTION CORNER.
- INDICATES CALCULATED CORNER.
- ELEVATION BASED ON NAVD88 (GEOID12B).
- BASIS OF BEARING DERIVED FROM COLORADO COORDINATE SYSTEM OF 1983 NORTH ZONE.
- ALL MEASURED DISTANCES ARE GRID.
COMBINED SCALE FACTOR: .99972874 CALCULATED FROM THE E. 1/4 CORNER OF SECTION 35, T2N, R67W.
OPERATOR: ROB WILSON / PDOP = 1.6.
- SEE ADDENDUM TO WELL LOCATION CERTIFICATE FOR EXISTING IMPROVEMENTS WITHIN 500' OF THE WELL PAD.
- WELL FOOTAGES ARE MEASURED AT RIGHT ANGLES TO THE SECTION LINES.
- THE BOTTOM OF HOLE BEARS S89°37'28"E, 9772' FROM THE HEEL LOCATION.
- NO. 1 & NO. 2 AS SHOWN HEREON ARE GOVERNMENT LOTS 1 & 2 PER THE ORIGINAL GLO SURVEY.

WELL PAD - BAJA BERG 14-35HZ

BAJA BERG 35-9HZ
 WELL LOCATION CERTIFICATE
 1087' FSL & 2451' FWL SESW (SURFACE)
 140' FSL & 2378' FEL SWSE (HEEL)
 LOCATED IN SECTION 35
 T2N, R67W, 6TH P.M.
 59' FSL & 2130' FWL LOT 1 (SESW) (BOTTOM)
 LOCATED IN SECTION 31
 T2N, R66W, 6TH P.M.
 WELD COUNTY, COLORADO

**Kerr-McGee Oil &
 Gas Onshore L.P.**
 1099 18th Street
 Denver, Colorado 80202



CONSULTING, LLC

SHERIDAN OFFICE
 1095 Saberton Avenue
 Sheridan, Wyoming 82801
 Phone 307-674-0609

LOVELAND OFFICE
 1635 Foxtrail Drive, Suite 204
 Loveland, Colorado 80538
 Phone 970-776-4331

DRAFTED BY:	LMO	CHECKED BY:	RKF	SHEET NO:
DATE DRAFTED:	2/26/18	DATE SURVEYED:	2/12/18	3
REVISED:		FILE NAME:	16-136	3 OF 3