

Conboy/Sanders TB

Wtr line to Dispos

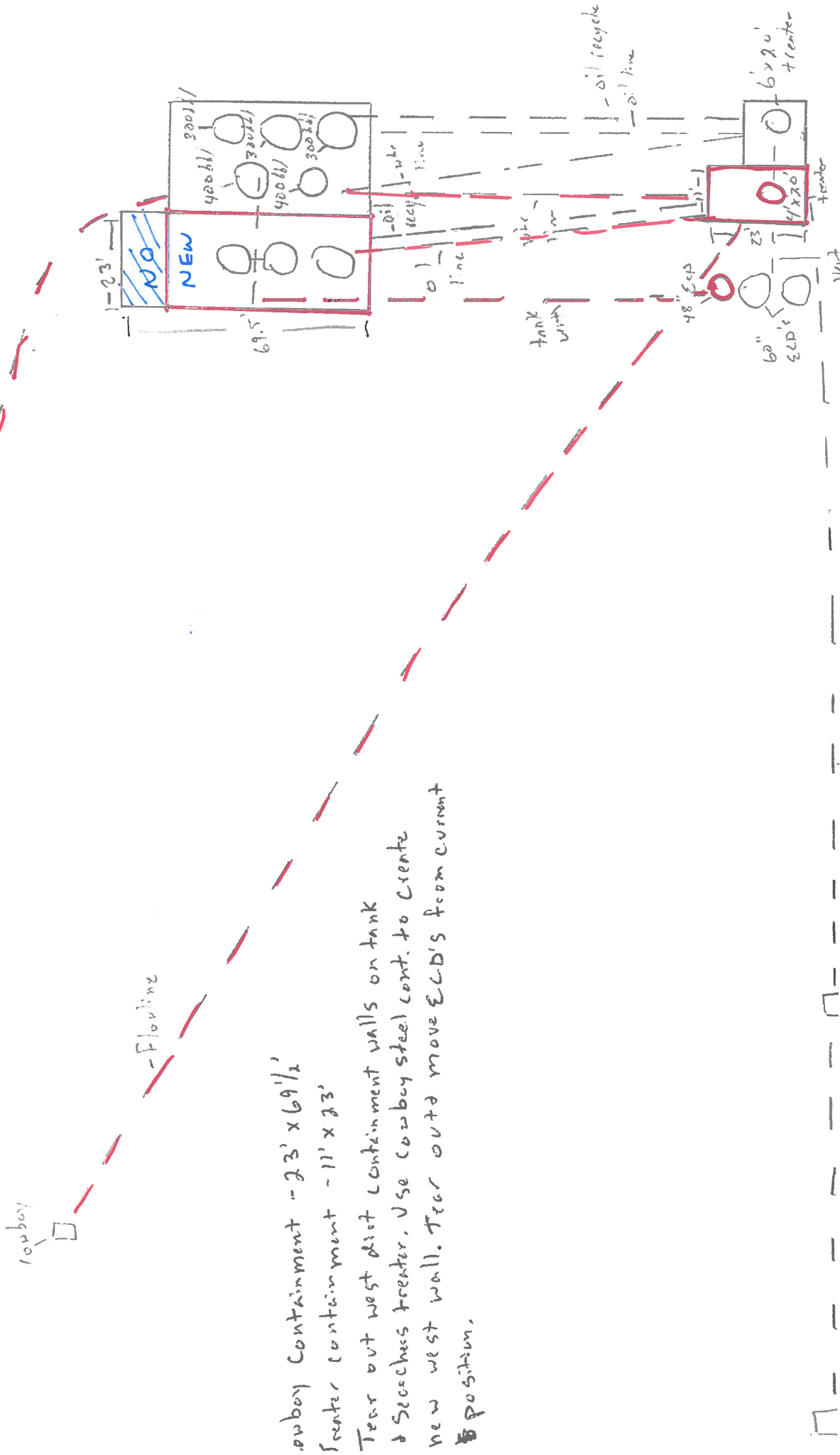
2
2
-
2
0

64
1

embryo Containment - 23' x 69 1/2'

Greater containment - 11' x 23'

Tear out west dike containment walls on tank & Secches treater. Use combuy steel cont. to create new west wall. Tear out & move ECD's from current ~~to~~ position.



Current Searchers TB

