

T2N, R67W

N. 1/4 COR.
SEC. 35, T2N, R67W
FOUND 2" ALUM. CAP
L.S. NO. 25937

NW. COR.
SEC. 35, T2N, R67W
FOUND 3 1/4" ALUM. CAP
P.L.S. NO. 13258

S 89°50'45" W 2634.67' (M)

NE. COR.
SEC. 35, T2N, R67W
FOUND 3 1/4" ALUM. CAP
L.S. NO. 22098

N 00°28'25" W 2647.64' (M)

SURFACE LOCATION: NAD 83
GROUND ELEVATION= 4930.5'
LATITUDE= 40.092352°
LONGITUDE= -104.858951°
LATITUDE= 40°05'32.467"
LONGITUDE= -104°51'32.222"
HEEL LOCATION: NAD 83
LATITUDE= 40.094725°
LONGITUDE= -104.857469°
LATITUDE= 40°05'41.011"
LONGITUDE= -104°51'26.888"
BOTTOM HOLE LOCATION: NAD 83
LATITUDE= 40.094339°
LONGITUDE= -104.822479°
LATITUDE= 40°05'39.620"
LONGITUDE= -104°49'20.924"

MATCH LINE
SEE SHEET 2

N 00°28'14" W
2638.11' (M)

N. 1/16 COR.
SEC. 35 & SEC. 36
T2N, R67W
FOUND 3 1/4" ALUM. CAP
P.L.S. NO. 23027

N 00°27'36" W
1314.55' (M)

CENTER 1/4 COR.
SEC. 35, T2N, R67W
FOUND 2" ALUM. CAP
ILLEGIBLE

HEEL LOCATION

35

S 89°39'54" W
1317.75' (M)

S 89°38'28" W
1317.28' (M)

S 89°39'06" W
2634.36' (M)

E. 1/4 COR.
SEC. 35, T2N, R67W
FOUND 2 1/2" ALUM. CAP
L.S. NO. 34980

W. 1/4 COR.
SEC. 35, T2N, R67W
FOUND 2" ALUM. CAP
L.S. NO. 25937

CW. 1/16 COR.
SEC. 35, T2N, R67W
SET 2 1/2" ALUM. CAP
P.L.S. NO. 38512

WELLBORE CONTINUES INTO SECTION 36

24'51" 7°47'



N 00°28'39" W 2648.02' (M)

BAJA BERG 35-1HZ
SURFACE LOCATION

2442'

N 01°15'24" W
2642.76' (M)

1763'

S. 1/16 COR.
SEC. 35 & SEC. 36
T2N, R67W
SET 2 1/2" ALUM. CAP
P.L.S. NO. 38512

N 00°28'47" W
1314.64' (M)

N 00°29'05" W
1314.29' (M)

SW. COR.
SEC. 35, T2N, R67W
FOUND 2 1/2" ALUM. CAP
ILLEGIBLE

S 89°32'00" W 2670.96' (M)

S. 1/4 COR.
SEC. 35, T2N, R67W
FOUND 2 1/2" ALUM. CAP
P.L.S. NO. 24307

S 89°21'13" W 2598.64' (M)

SE. COR.
SEC. 35, T2N, R67W
FOUND 2" ALUM. CAP
L.S. NO. 25937

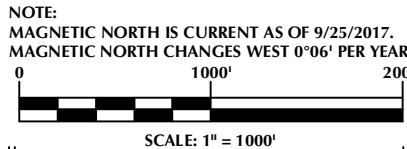
CERTIFICATE OF SURVEYOR:

THIS IS TO CERTIFY THAT THE ABOVE PLAT WAS PREPARED FROM FIELD NOTES OF ACTUAL SURVEYS MADE BY ME OR UNDER MY SUPERVISION AND THAT THE SAID PLAT IS TRUE AND CORRECT TO THE BEST OF MY KNOWLEDGE AND BELIEF. THIS CERTIFICATE DOES NOT REPRESENT A LAND SURVEY PLAT OR IMPROVEMENT SURVEY PLAT AS DEFINED BY C.R.S. 38-5-102 AND CANNOT BE RELIED UPON TO DETERMINE OWNERSHIP.

Randall K. French
PROFESSIONAL LAND SURVEYOR
38512
2/22/18

RANDALL K. FRENCH
PROFESSIONAL LAND SURVEYOR
COLORADO REGISTRATION NUMBER 38512

NOTICE: ACCORDING TO COLORADO STATE LAW YOU MUST COMMENCE LEGAL ACTION BASED UPON ANY DEFECT IN THIS SURVEY WITHIN THREE YEARS AFTER YOU FIRST DISCOVER SUCH DEFECT. IN NO EVENT MAY ANY ACTION BASED UPON ANY DEFECT IN THIS SURVEY BE COMMENCED MORE THAN TEN YEARS FROM THE DATE ON THE CERTIFICATION SHOWN HEREON.



NOTES:

- ▲ INDICATES SECTION CORNER.
- INDICATES CALCULATED CORNER.
- ELEVATION BASED ON NAVD88 (GEOID12B).
- BASIS OF BEARING DERIVED FROM COLORADO COORDINATE SYSTEM OF 1983 NORTH ZONE.
- ALL MEASURED DISTANCES ARE GRID.
COMBINED SCALE FACTOR: .99972874 CALCULATED FROM THE E. 1/4 CORNER OF SECTION 35, T2N, R67W.
OPERATOR: ROB WILSON / PDOP = 1.4.
- SEE ADDENDUM TO WELL LOCATION CERTIFICATE FOR EXISTING IMPROVEMENTS WITHIN 500' OF THE WELL PAD.
- WELL FOOTAGES ARE MEASURED AT RIGHT ANGLES TO THE SECTION LINES.
- THE BOTTOM OF HOLE BEARS S89°36'10"E, 9790' FROM THE HEEL LOCATION.

WELL PAD - BAJA BERG 11-35HZ

BAJA BERG 35-1HZ
WELL LOCATION CERTIFICATE
1763' FSL & 2442' FWL NESW (SURFACE)
2627' FSL & 2412' FWL NESW (HEEL)
LOCATED IN SECTION 35
T2N, R67W, 6TH P.M.
2541' FSL & 2105' FWL LOT 1 (NESW) (BOTTOM)
LOCATED IN SECTION 31
T2N, R66W, 6TH P.M.
WELD COUNTY, COLORADO

**Kerr-McGee Oil &
Gas Onshore L.P.**
1099 18th Street
Denver, Colorado 80202



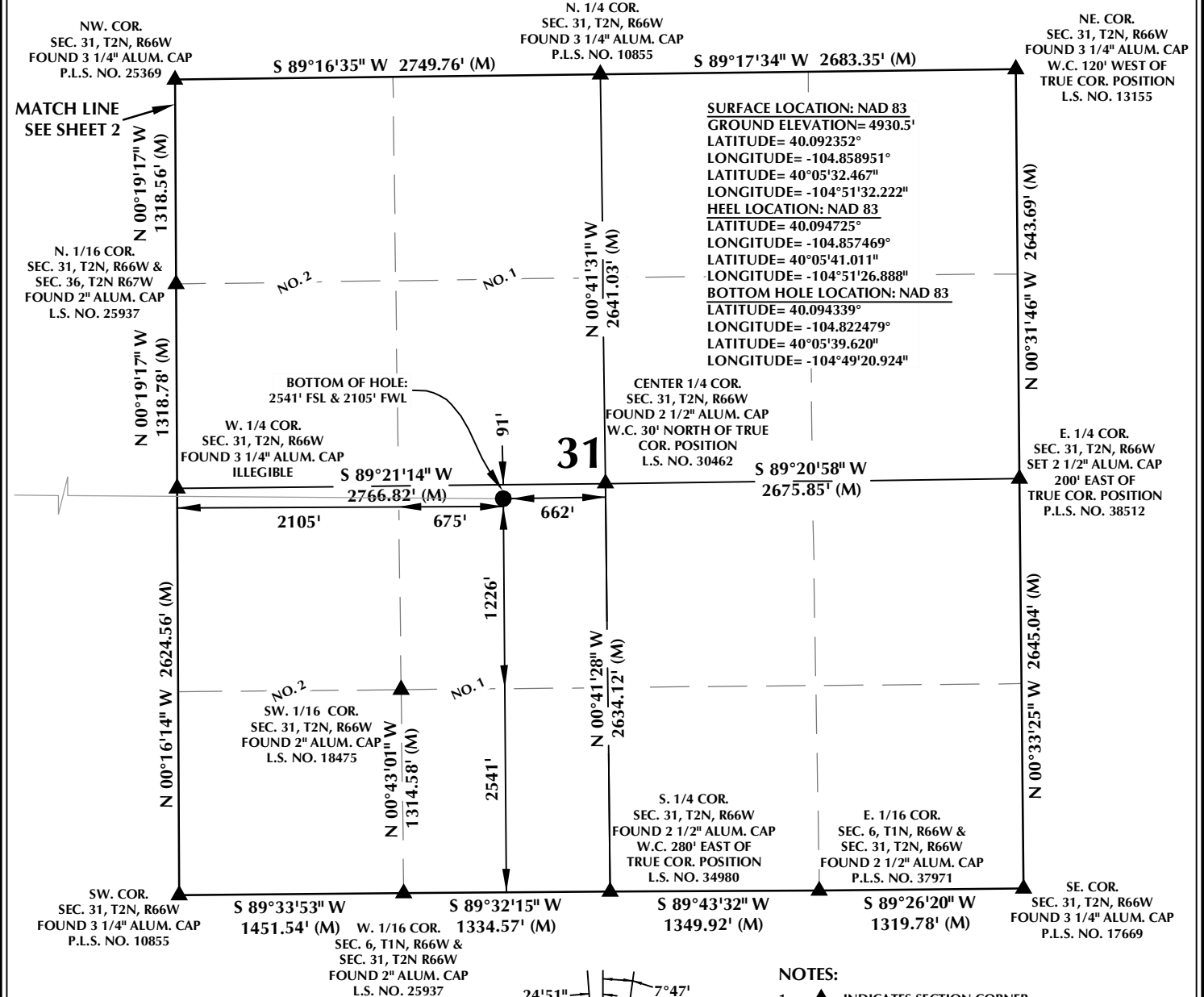
CONSULTING, LLC

SHERIDAN OFFICE
1095 Saberton Avenue
Sheridan, Wyoming 82801
Phone 307-674-0609

LOVELAND OFFICE
1635 Foxtrail Drive, Suite 204
Loveland, Colorado 80538
Phone 970-776-4331

| | | |
|-----------------------|------------------------|-----------|
| DRAFTED BY: LMO | CHECKED BY: RKF | SHEET NO: |
| DATE DRAFTED: 2/22/18 | DATE SURVEYED: 2/12/18 | 1 |
| REVISED: | FILE NAME: 16-136 | 1 OF 3 |

T2N, R66W



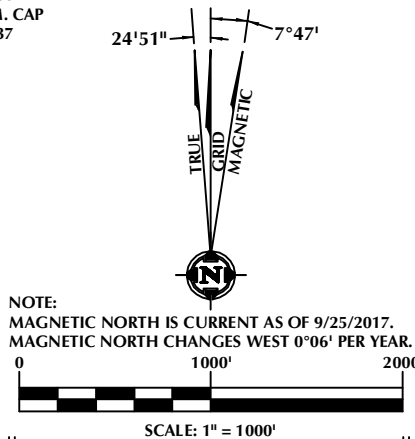
CERTIFICATE OF SURVEYOR:

THIS IS TO CERTIFY THAT THE ABOVE PLAT WAS PREPARED FROM FIELD NOTES OF ACTUAL SURVEYS MADE BY ME OR UNDER MY SUPERVISION AND THAT THE SAME ARE TRUE AND CORRECT TO THE BEST OF MY KNOWLEDGE AND BELIEF. THIS CERTIFICATE DOES NOT REPRESENT A LAND SURVEY PLAT OR IMPROVEMENT SURVEY PLAT AS DEFINED BY C.R.S. 38-5-102 AND CANNOT BE RELIED UPON TO DETERMINE OWNERSHIP.

Randall K. French
 38512
 PROFESSIONAL LAND SURVEYOR

RANDALL K. FRENCH
 PROFESSIONAL LAND SURVEYOR
 COLORADO REGISTRATION NUMBER 38512
 2/26/18

NOTICE: ACCORDING TO COLORADO STATE LAW YOU MUST COMMENCE LEGAL ACTION BASED UPON ANY DEFECT IN THIS SURVEY WITHIN THREE YEARS AFTER YOU FIRST DISCOVER SUCH DEFECT. IN NO EVENT MAY ANY ACTION BASED UPON ANY DEFECT IN THIS SURVEY BE COMMENCED MORE THAN TEN YEARS FROM THE DATE ON THE CERTIFICATION SHOWN HEREON.



NOTES:

- ▲ INDICATES SECTION CORNER.
- INDICATES CALCULATED CORNER.
- ELEVATION BASED ON NAVD88 (GEOID12B).
- BASIS OF BEARING DERIVED FROM COLORADO COORDINATE SYSTEM OF 1983 NORTH ZONE.
- ALL MEASURED DISTANCES ARE GRID.
COMBINED SCALE FACTOR: .99972874 CALCULATED FROM THE E. 1/4 CORNER OF SECTION 35, T2N, R67W.
OPERATOR: ROB WILSON / PDOP = 1.4.
- SEE ADDENDUM TO WELL LOCATION CERTIFICATE FOR EXISTING IMPROVEMENTS WITHIN 500' OF THE WELL PAD.
- WELL FOOTAGES ARE MEASURED AT RIGHT ANGLES TO THE SECTION LINES.
- THE BOTTOM OF HOLE BEARS S89°36'10"E, 9790' FROM THE HEEL LOCATION.
- NO. 1 & NO. 2 AS SHOWN HEREON ARE GOVERNMENT LOTS 1 & 2 PER THE ORIGINAL GLO SURVEY.

WELL PAD - BAJA BERG 11-35HZ

BAJA BERG 35-1HZ
 WELL LOCATION CERTIFICATE
 1763' FSL & 2442' FWL NESW (SURFACE)
 2627' FSL & 2412' FEL NWSE (HEEL)
 LOCATED IN SECTION 35
 T2N, R67W, 6TH P.M.
 2541' FSL & 2105' FWL LOT 1 (NESW) (BOTTOM)
 LOCATED IN SECTION 31
 T2N, R66W, 6TH P.M.
 WELD COUNTY, COLORADO

Kerr-McGee Oil & Gas Onshore L.P.
 1099 18th Street
 Denver, Colorado 80202



CONSULTING, LLC

SHERIDAN OFFICE: 1095 Saberton Avenue, Sheridan, Wyoming 82801, Phone 307-674-0609
 LOVELAND OFFICE: 1635 Foxtrail Drive, Suite 204, Loveland, Colorado 80538, Phone 970-776-4331

| | | |
|-----------------------|------------------------|---------------------------------|
| DRAFTED BY: LMO | CHECKED BY: RKF | SHEET NO: 3 3 OF 3 |
| DATE DRAFTED: 2/22/18 | DATE SURVEYED: 2/12/18 | |
| REVISED: 2/26/18 | FILE NAME: 16-136 | |