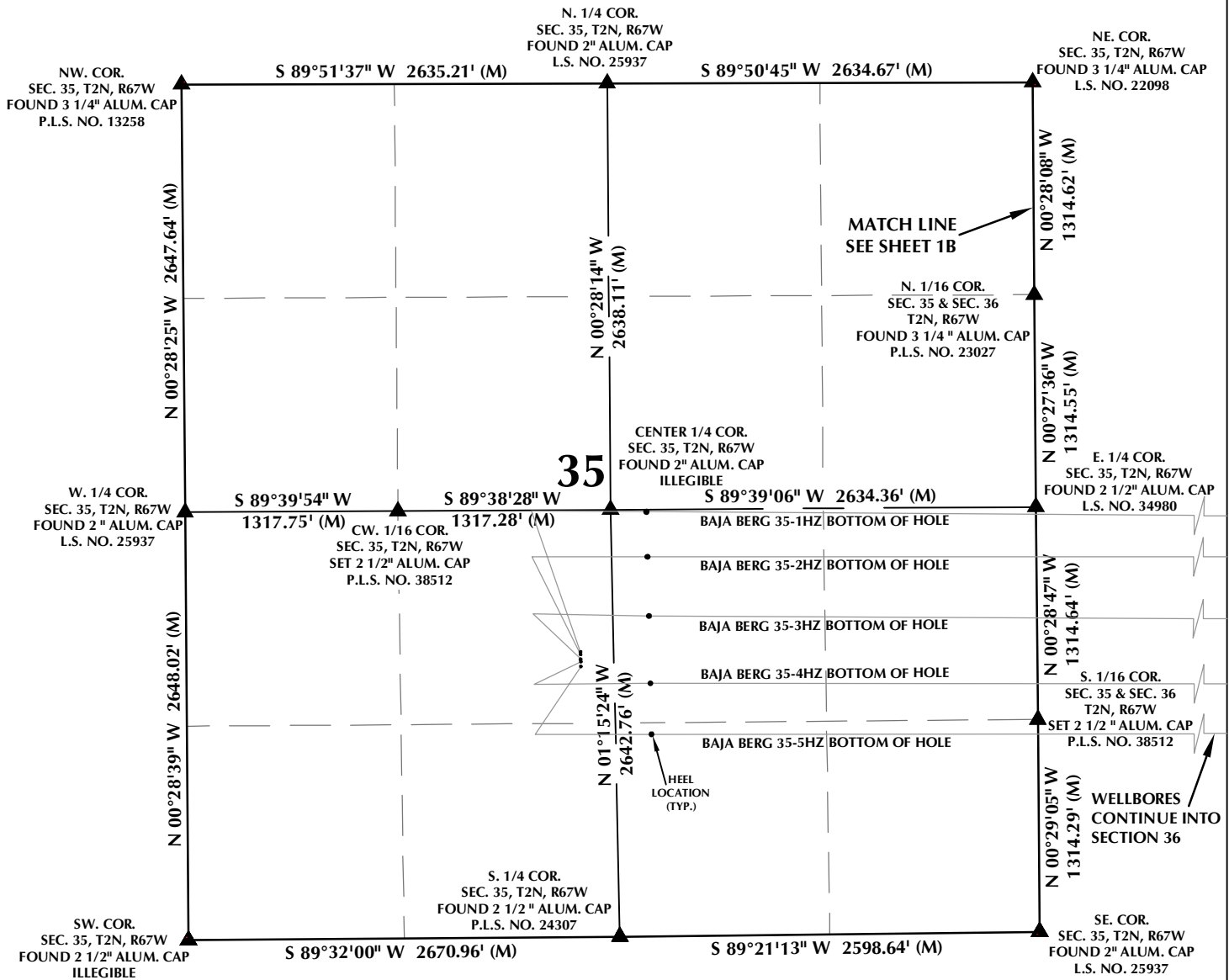


# MULTI-WELL PLAN SECTION 35, T2N, R67W

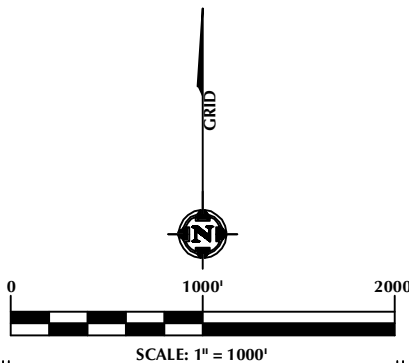


**WELL NOTES:**

- BAJA BERG 35-1HZ**  
SURFACE: 1763' FSL, 2442' FWL, SEC. 35, T2N, R67W  
BOTTOM HOLE: 2541' FSL, 2105' FWL, SEC. 31, T2N, R66W
- BAJA BERG 35-2HZ**  
SURFACE: 1748' FSL, 2442' FWL, SEC. 35, T2N, R67W  
BOTTOM HOLE: 2327' FSL, 2108' FWL, SEC. 31, T2N, R66W
- BAJA BERG 35-3HZ**  
SURFACE: 1718' FSL, 2442' FWL, SEC. 35, T2N, R67W  
BOTTOM HOLE: 1918' FSL, 2112' FWL, SEC. 31, T2N, R66W
- BAJA BERG 35-4HZ**  
SURFACE: 1703' FSL, 2443' FWL, SEC. 35, T2N, R67W  
BOTTOM HOLE: 1539' FSL, 2116' FWL, SEC. 31, T2N, R66W
- BAJA BERG 35-5HZ**  
SURFACE: 1673' FSL, 2443' FWL, SEC. 35, T2N, R67W  
BOTTOM HOLE: 1243' FSL, 2119' FWL, SEC. 31, T2N, R66W

**NOTES:**

- ▲ INDICATES SECTION CORNER.
- INDICATES CALCULATED CORNER.
- BASIS OF BEARING DERIVED FROM COLORADO COORDINATE SYSTEM OF 1983 NORTH ZONE.
- ALL MEASURED DISTANCES ARE GRID. COMBINED SCALE FACTOR: .99972874 CALCULATED FROM THE E. 1/4 CORNER OF SECTION 35, T2N, R67W.
- WELL FOOTAGES ARE MEASURED AT RIGHT ANGLES TO THE SECTION LINES.



**WELL PAD - BAJA BERG 11-35HZ**

MULTI-WELL PLAN  
BAJA BERG 35-1HZ,  
BAJA BERG 35-2HZ, BAJA BERG 35-3HZ,  
BAJA BERG 35-4HZ & BAJA BERG 35-5HZ  
LOCATED IN SECTIONS 35 & 36, T2N, R67W, 6TH P.M. &  
LOCATED IN SECTION 31, T2N, R66W, 6TH P.M.  
WELD COUNTY, COLORADO

**Kerr-McGee Oil &  
Gas Onshore L.P.**  
1099 18th Street  
Denver, Colorado 80202



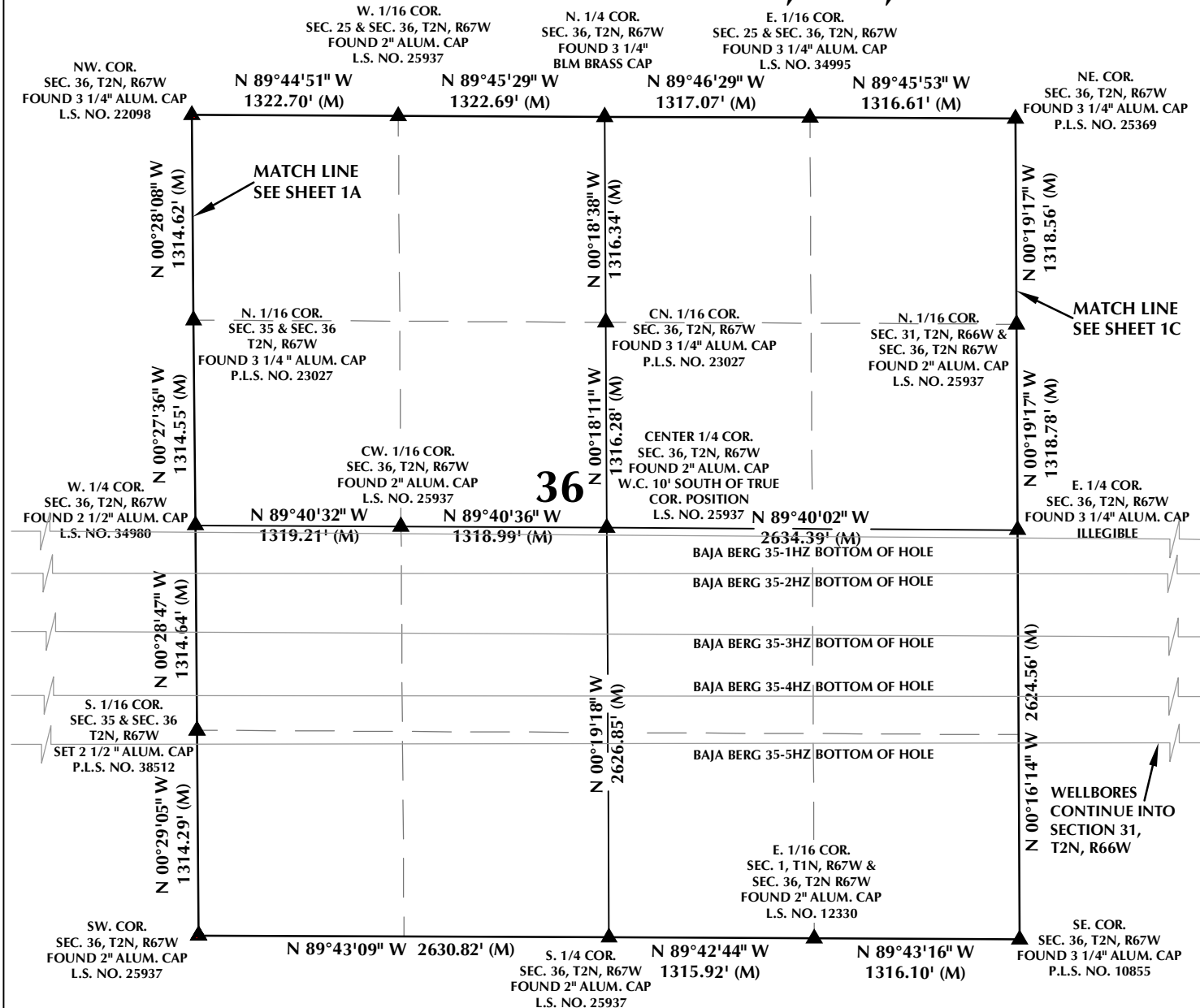
**CONSULTING, LLC**

**SHERIDAN OFFICE**  
1095 Saberton Avenue  
Sheridan, Wyoming 82801  
Phone 307-674-0609

**LOVELAND OFFICE**  
1635 Foxtrail Drive, Suite 204  
Loveland, Colorado 80538  
Phone 970-776-4331

DRAFTED BY: LMO	CHECKED BY: RKF	SHEET NO: <b>1A</b> 1A OF 1
DATE DRAFTED: 2/22/18	DATE SURVEYED: 2/12/18	
REVISED:	FILE NAME: 16-136	

# MULTI-WELL PLAN SECTION 36, T2N, R67W

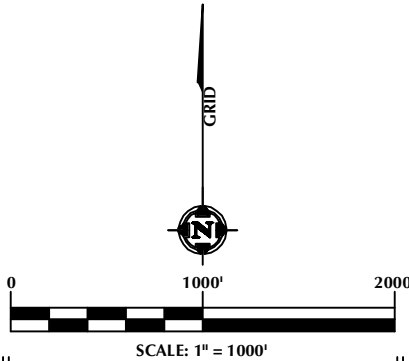


**WELL NOTES:**

- BAJA BERG 35-1HZ**  
SURFACE: 1763' FSL, 2442' FWL, SEC. 35, T2N, R67W  
BOTTOM HOLE: 2541' FSL, 2105' FWL, SEC. 31, T2N, R66W
- BAJA BERG 35-2HZ**  
SURFACE: 1748' FSL, 2442' FWL, SEC. 35, T2N, R67W  
BOTTOM HOLE: 2327' FSL, 2108' FWL, SEC. 31, T2N, R66W
- BAJA BERG 35-3HZ**  
SURFACE: 1718' FSL, 2442' FWL, SEC. 35, T2N, R67W  
BOTTOM HOLE: 1918' FSL, 2112' FWL, SEC. 31, T2N, R66W
- BAJA BERG 35-4HZ**  
SURFACE: 1703' FSL, 2443' FWL, SEC. 35, T2N, R67W  
BOTTOM HOLE: 1539' FSL, 2116' FWL, SEC. 31, T2N, R66W
- BAJA BERG 35-5HZ**  
SURFACE: 1673' FSL, 2443' FWL, SEC. 35, T2N, R67W  
BOTTOM HOLE: 1243' FSL, 2119' FWL, SEC. 31, T2N, R66W

**NOTES:**

1. ▲ INDICATES SECTION CORNER.
2. ● INDICATES CALCULATED CORNER.
3. BASIS OF BEARING DERIVED FROM COLORADO COORDINATE SYSTEM OF 1983 NORTH ZONE.
4. ALL MEASURED DISTANCES ARE GRID. COMBINED SCALE FACTOR: .99972874 CALCULATED FROM THE E. 1/4 CORNER OF SECTION 35, T2N, R67W.
5. WELL FOOTAGES ARE MEASURED AT RIGHT ANGLES TO THE SECTION LINES.



**WELL PAD - BAJA BERG 11-35HZ**

MULTI-WELL PLAN  
BAJA BERG 35-1HZ,  
BAJA BERG 35-2HZ, BAJA BERG 35-3HZ,  
BAJA BERG 35-4HZ & BAJA BERG 35-5HZ  
LOCATED IN SECTIONS 35 & 36, T2N, R67W, 6TH P.M. &  
LOCATED IN SECTION 31, T2N, R66W, 6TH P.M.  
WELD COUNTY, COLORADO

**Kerr-McGee Oil &  
Gas Onshore L.P.**  
1099 18th Street  
Denver, Colorado 80202



**CONSULTING, LLC**

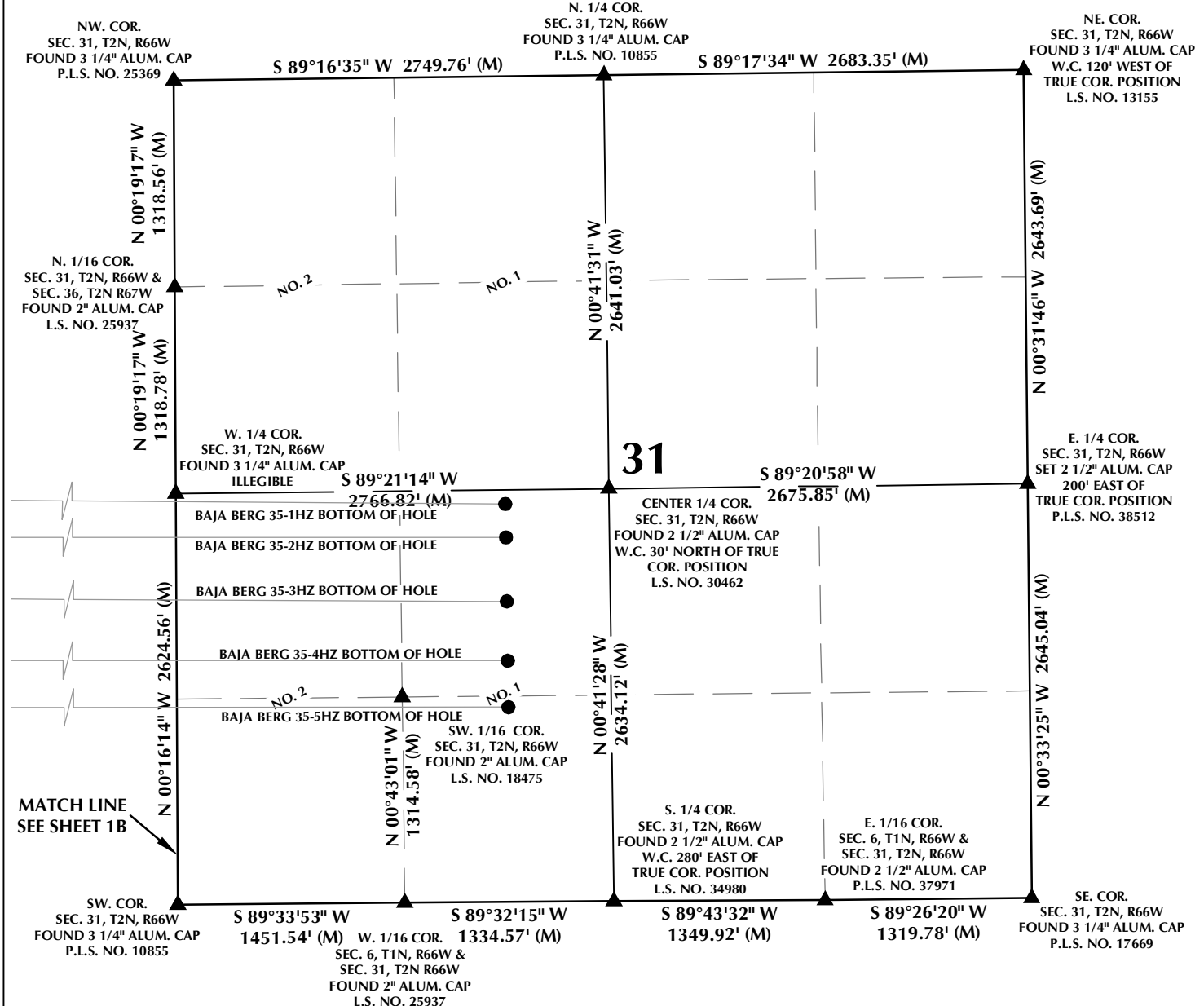
**SHERIDAN OFFICE**  
1095 Saberton Avenue  
Sheridan, Wyoming 82801  
Phone 307-674-0609

**LOVELAND OFFICE**  
1635 Foxtrail Drive, Suite 204  
Loveland, Colorado 80538  
Phone 970-776-4331

DRAFTED BY: LMO	CHECKED BY: RKF	SHEET NO: <b>1B</b> 1B OF 1
DATE DRAFTED: 2/22/18	DATE SURVEYED: 2/12/18	
REVISED:	FILE NAME: 16-136	

K:\AMADARKO\2016\136\_BAJA\_BERG\_T2N\_R67W\_SEC\_35\PLATS\11-35HZ\BAW\_BERG\_11-35HZ\_NV.dwg, 2/20/2018 6:07:44 PM, lba

# MULTI-WELL PLAN SECTION 31, T2N, R66W

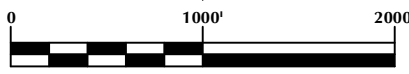


**WELL NOTES:**

- BAJA BERG 35-1HZ**  
SURFACE: 1763' FSL, 2442' FWL, SEC. 35, T2N, R67W  
BOTTOM HOLE: 2541' FSL, 2105' FWL, SEC. 31, T2N, R66W
- BAJA BERG 35-2HZ**  
SURFACE: 1748' FSL, 2442' FWL, SEC. 35, T2N, R67W  
BOTTOM HOLE: 2327' FSL, 2108' FWL, SEC. 31, T2N, R66W
- BAJA BERG 35-3HZ**  
SURFACE: 1718' FSL, 2442' FWL, SEC. 35, T2N, R67W  
BOTTOM HOLE: 1918' FSL, 2112' FWL, SEC. 31, T2N, R66W
- BAJA BERG 35-4HZ**  
SURFACE: 1703' FSL, 2443' FWL, SEC. 35, T2N, R67W  
BOTTOM HOLE: 1539' FSL, 2116' FWL, SEC. 31, T2N, R66W
- BAJA BERG 35-5HZ**  
SURFACE: 1673' FSL, 2443' FWL, SEC. 35, T2N, R67W  
BOTTOM HOLE: 1243' FSL, 2119' FWL, SEC. 31, T2N, R66W

**NOTES:**

- ▲ INDICATES SECTION CORNER.
- INDICATES CALCULATED CORNER.
- BASIS OF BEARING DERIVED FROM COLORADO COORDINATE SYSTEM OF 1983 NORTH ZONE.
- ALL MEASURED DISTANCES ARE GRID. COMBINED SCALE FACTOR: .99972874 CALCULATED FROM THE E. 1/4 CORNER OF SECTION 35, T2N, R67W.
- WELL FOOTAGES ARE MEASURED AT RIGHT ANGLES TO THE SECTION LINES.
- NO. 1 & NO. 2 AS SHOWN HEREON ARE GOVERNMENT LOTS 1 & 2 PER THE ORIGINAL GLO SURVEY.



**WELL PAD - BAJA BERG 11-35HZ**

MULTI-WELL PLAN  
BAJA BERG 35-1HZ,  
BAJA BERG 35-2HZ, BAJA BERG 35-3HZ,  
BAJA BERG 35-4HZ & BAJA BERG 35-5HZ  
LOCATED IN SECTIONS 35 & 36, T2N, R67W, 6TH P.M. &  
LOCATED IN SECTION 31, T2N, R66W, 6TH P.M.  
WELD COUNTY, COLORADO

**Kerr-McGee Oil &  
Gas Onshore L.P.**  
1099 18th Street  
Denver, Colorado 80202



**CONSULTING, LLC**

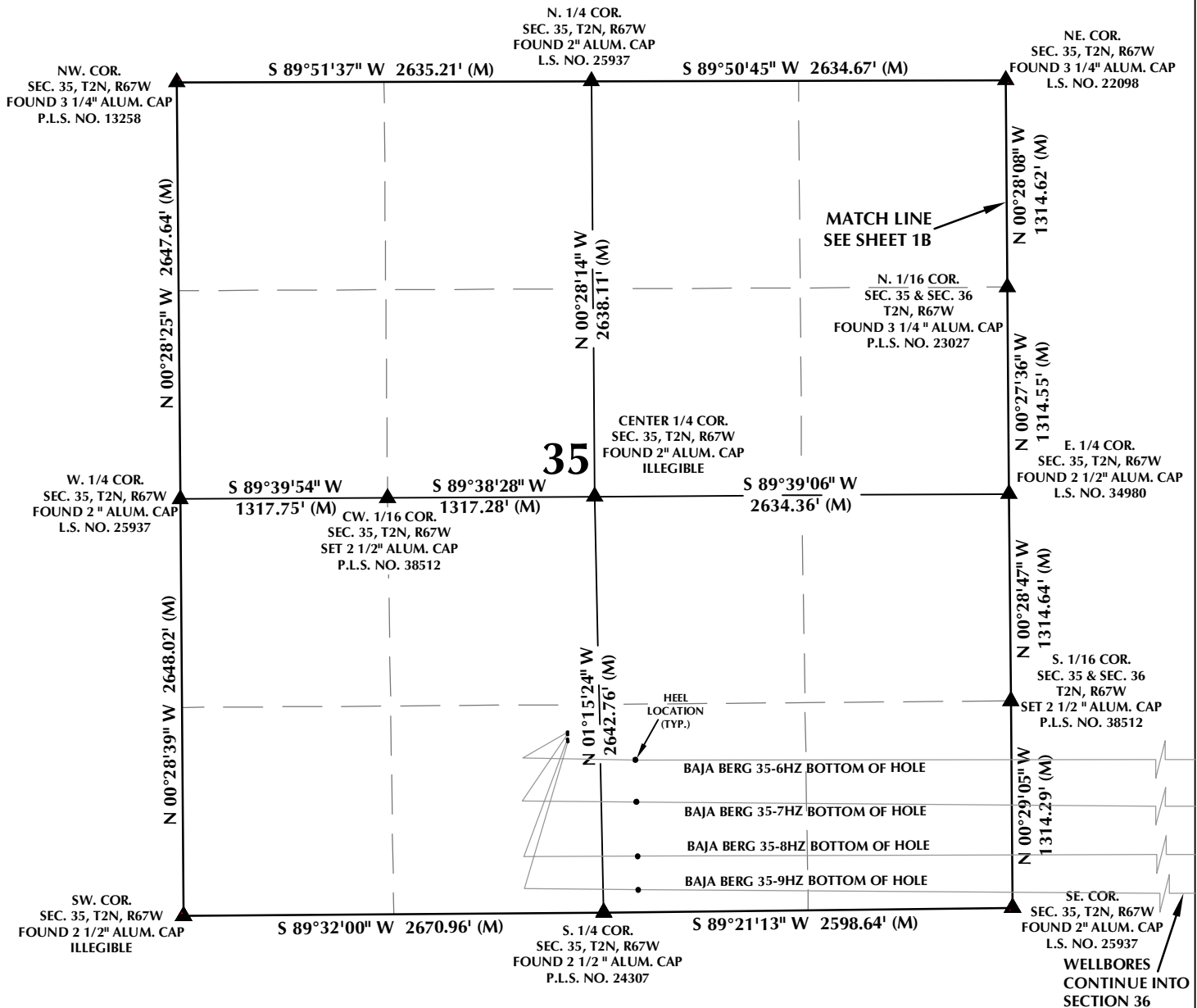
**SHERIDAN OFFICE**  
1095 Saberton Avenue  
Sheridan, Wyoming 82801  
Phone 307-674-0609

**LOVELAND OFFICE**  
1635 Foxtrail Drive, Suite 204  
Loveland, Colorado 80538  
Phone 970-776-4331

DRAFTED BY: LMO	CHECKED BY: RKF	SHEET NO: <b>1C</b> 1C OF 1
DATE DRAFTED: 2/22/18	DATE SURVEYED: 2/12/18	
REVISED:	FILE NAME: 16-136	

K:\MADRNO\2016\136\_BAJA\_BERG\_72N\_R67W\_SEC\_35\PLAT19,11-35HZ\BAJA BERG 11-35HZ\MWDwg, 2/22/2018 1:07:52 PM, wmgler

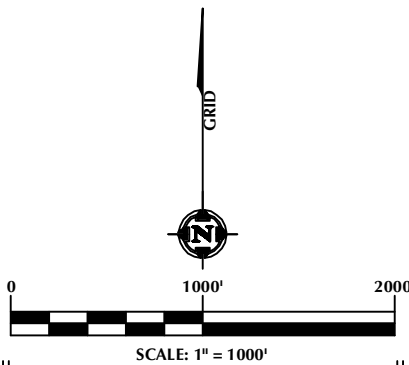
# MULTI-WELL PLAN SECTION 35, T2N, R67W



- BAJA BERG 35-6HZ**  
SURFACE: 1147' FSL, 2450' FWL, SEC. 35, T2N, R67W  
BOTTOM HOLE: 951' FSL, 2121' FWL, SEC. 31, T2N, R66W
- BAJA BERG 35-7HZ**  
SURFACE: 1132' FSL, 2450' FWL, SEC. 35, T2N, R67W  
BOTTOM HOLE: 601' FSL, 2125' FWL, SEC. 31, T2N, R66W
- BAJA BERG 35-8HZ**  
SURFACE: 1102' FSL, 2450' FWL, SEC. 35, T2N, R67W  
BOTTOM HOLE: 369' FSL, 2128' FWL, SEC. 31, T2N, R66W
- BAJA BERG 35-9HZ**  
SURFACE: 1087' FSL, 2451' FWL, SEC. 35, T2N, R67W  
BOTTOM HOLE: 59' FSL, 2130' FWL, SEC. 31, T2N, R66W

**NOTES:**

1. ▲ INDICATES SECTION CORNER.
2. ● INDICATES CALCULATED CORNER.
3. BASIS OF BEARING DERIVED FROM COLORADO COORDINATE SYSTEM OF 1983 NORTH ZONE.
4. ALL MEASURED DISTANCES ARE GRID. COMBINED SCALE FACTOR: .99972874 CALCULATED FROM THE E. 1/4 CORNER OF SECTION 35, T2N, R67W.
5. WELL FOOTAGES ARE MEASURED AT RIGHT ANGLES TO THE SECTION LINES.



**WELL PAD - BAJA BERG 14-35HZ**

MULTI-WELL PLAN  
BAJA BERG 35-6HZ, BAJA BERG 35-7HZ,  
BAJA BERG 35-8HZ & BAJA BERG 35-9HZ  
LOCATED IN SECTIONS 35 & 36, T2N, R67W, 6TH P.M. &  
LOCATED IN SECTION 31, T2N, R66W, 6TH P.M.  
WELD COUNTY, COLORADO

**Kerr-McGee Oil &  
Gas Onshore L.P.**  
1099 18th Street  
Denver, Colorado 80202



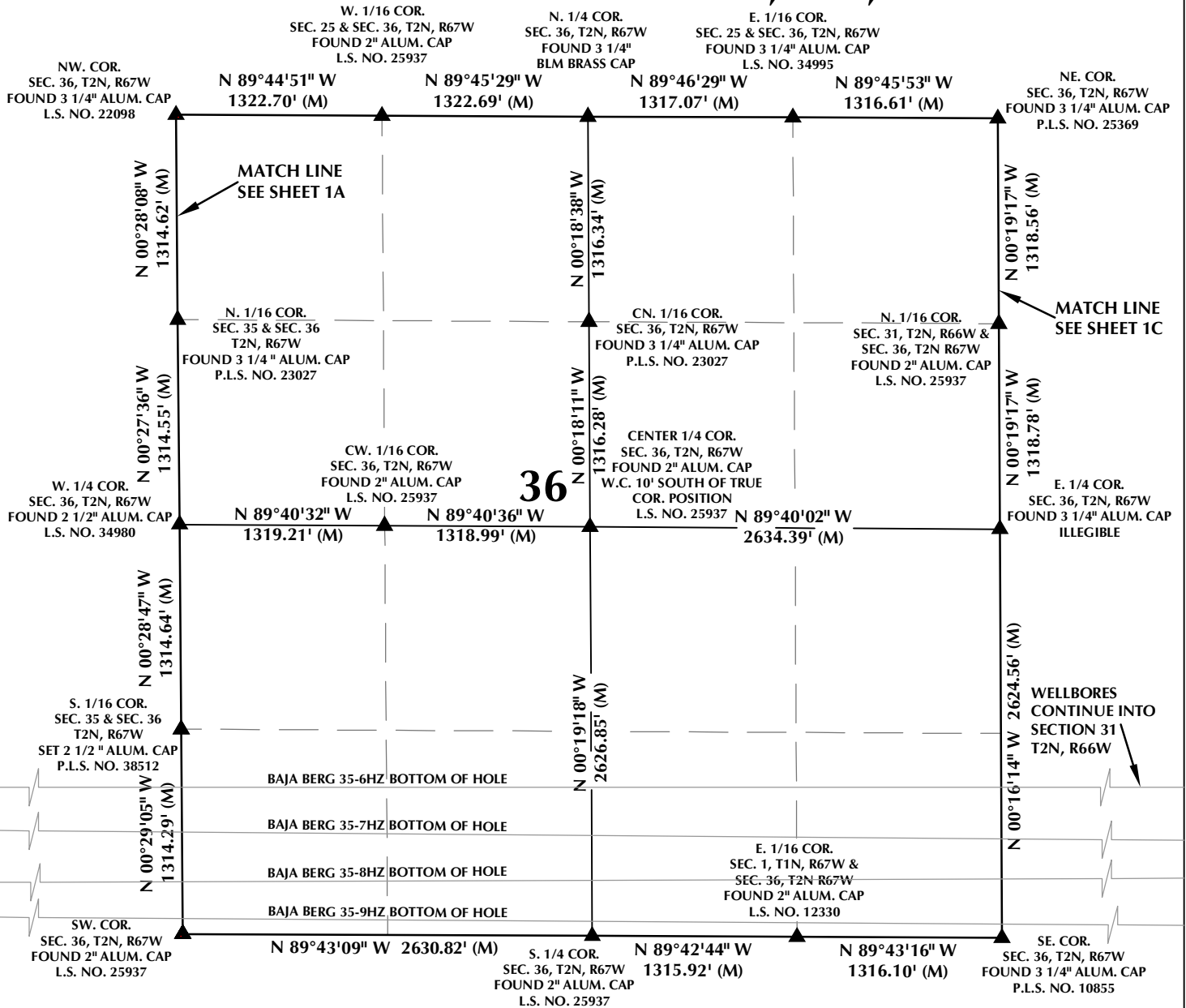
**CONSULTING, LLC**

**SHERIDAN OFFICE**  
1095 Saberton Avenue  
Sheridan, Wyoming 82801  
Phone 307-674-0609

**LOVELAND OFFICE**  
1635 Foxtrail Drive, Suite 204  
Loveland, Colorado 80538  
Phone 970-776-4331

DRAFTED BY: LMO	CHECKED BY: RKF	SHEET NO: <b>1A</b> 1A OF 1
DATE DRAFTED: 2/26/18	DATE SURVEYED: 2/12/18	
REVISED:	FILE NAME: 16-136	

# MULTI-WELL PLAN SECTION 36, T2N, R67W

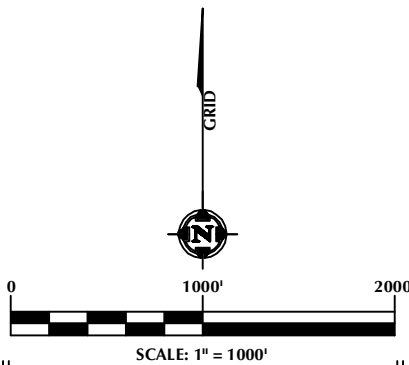


## WELL NOTES:

- BAJA BERG 35-6HZ**  
SURFACE: 1147' FSL, 2450' FWL, SEC. 35, T2N, R67W  
BOTTOM HOLE: 951' FSL, 2121' FWL, SEC. 31, T2N, R66W
- BAJA BERG 35-7HZ**  
SURFACE: 1132' FSL, 2450' FWL, SEC. 35, T2N, R67W  
BOTTOM HOLE: 601' FSL, 2125' FWL, SEC. 31, T2N, R66W
- BAJA BERG 35-8HZ**  
SURFACE: 1102' FSL, 2450' FWL, SEC. 35, T2N, R67W  
BOTTOM HOLE: 369' FSL, 2128' FWL, SEC. 31, T2N, R66W
- BAJA BERG 35-9HZ**  
SURFACE: 1087' FSL, 2451' FWL, SEC. 35, T2N, R67W  
BOTTOM HOLE: 59' FSL, 2130' FWL, SEC. 31, T2N, R66W

## NOTES:

1. ▲ INDICATES SECTION CORNER.
2. ● INDICATES CALCULATED CORNER.
3. BASIS OF BEARING DERIVED FROM COLORADO COORDINATE SYSTEM OF 1983 NORTH ZONE.
4. ALL MEASURED DISTANCES ARE GRID. COMBINED SCALE FACTOR: .99972874 CALCULATED FROM THE E. 1/4 CORNER OF SECTION 35, T2N, R67W.
5. WELL FOOTAGES ARE MEASURED AT RIGHT ANGLES TO THE SECTION LINES.



## WELL PAD - BAJA BERG 14-35HZ

MULTI-WELL PLAN  
BAJA BERG 35-6HZ, BAJA BERG 35-7HZ,  
BAJA BERG 35-8HZ & BAJA BERG 35-9HZ  
LOCATED IN SECTIONS 35 & 36, T2N, R67W, 6TH P.M. &  
LOCATED IN SECTION 31, T2N, R66W, 6TH P.M.  
WELD COUNTY, COLORADO

**Kerr-McGee Oil &  
Gas Onshore L.P.**  
1099 18th Street  
Denver, Colorado 80202



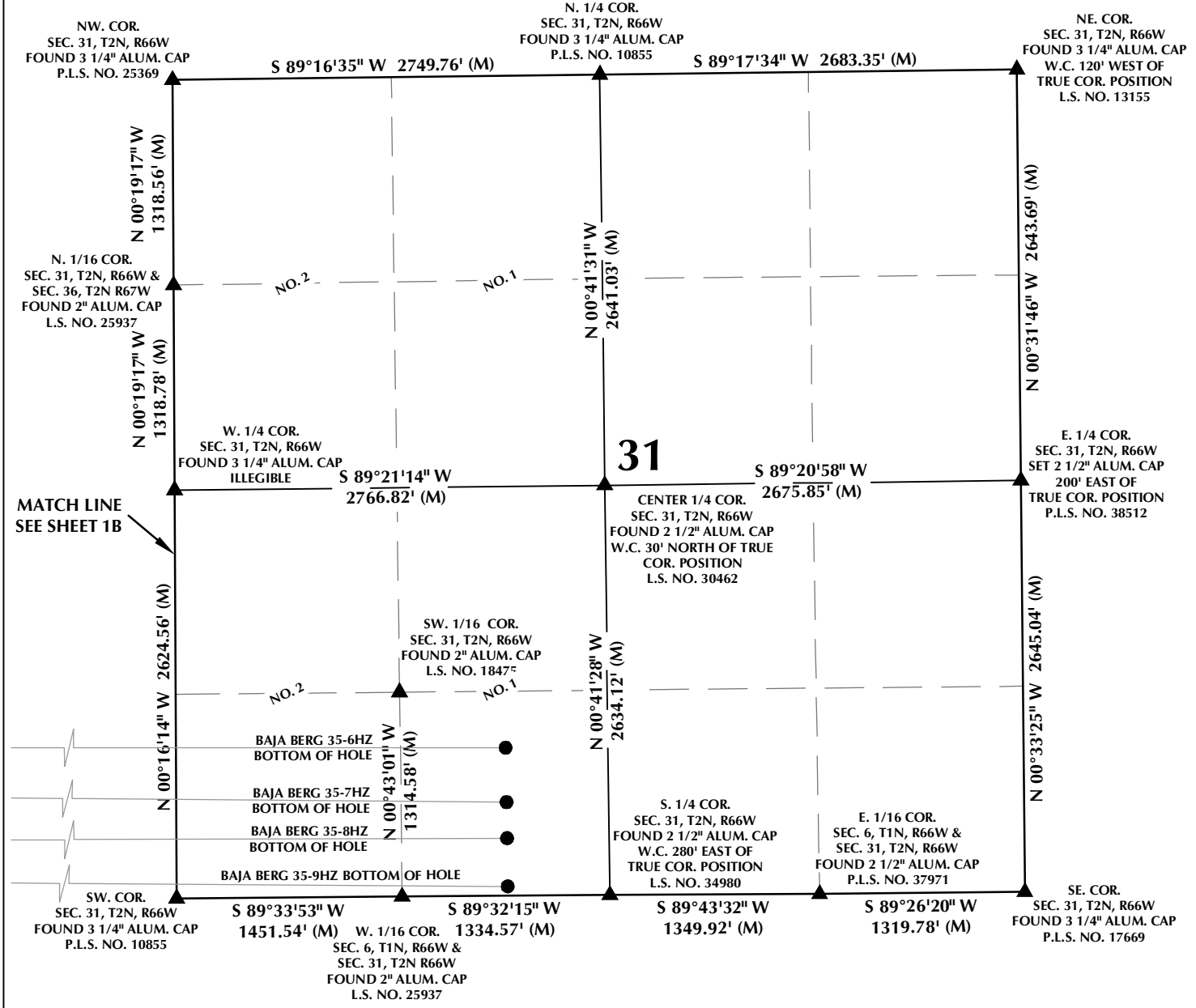
## CONSULTING, LLC

**SHERIDAN OFFICE**  
1095 Saberton Avenue  
Sheridan, Wyoming 82801  
Phone 307-674-0609

**LOVELAND OFFICE**  
1635 Foxtrail Drive, Suite 204  
Loveland, Colorado 80538  
Phone 970-776-4331

DRAFTED BY:	LMO	CHECKED BY:	RKF	SHEET NO:
DATE DRAFTED:	2/26/18	DATE SURVEYED:	2/12/18	<b>1B</b>
REVISED:		FILE NAME:	16-136	1B OF 1

# MULTI-WELL PLAN SECTION 31, T2N, R66W



**WELL NOTES:**

**BAJA BERG 35-6HZ**  
 SURFACE: 1147' FSL, 2450' FWL, SEC. 35, T2N, R67W  
 BOTTOM HOLE: 951' FSL, 2121' FWL, SEC. 31, T2N, R66W

**BAJA BERG 35-7HZ**  
 SURFACE: 1132' FSL, 2450' FWL, SEC. 35, T2N, R67W  
 BOTTOM HOLE: 601' FSL, 2125' FWL, SEC. 31, T2N, R66W

**BAJA BERG 35-8HZ**  
 SURFACE: 1102' FSL, 2450' FWL, SEC. 35, T2N, R67W  
 BOTTOM HOLE: 369' FSL, 2128' FWL, SEC. 31, T2N, R66W

**BAJA BERG 35-9HZ**  
 SURFACE: 1087' FSL, 2451' FWL, SEC. 35, T2N, R67W  
 BOTTOM HOLE: 59' FSL, 2130' FWL, SEC. 31, T2N, R66W

- NOTES:**
- ▲ INDICATES SECTION CORNER.
  - INDICATES CALCULATED CORNER.
  - BASIS OF BEARING DERIVED FROM COLORADO COORDINATE SYSTEM OF 1983 NORTH ZONE.
  - ALL MEASURED DISTANCES ARE GRID.
  - COMBINED SCALE FACTOR: .99972874 CALCULATED FROM THE E. 1/4 CORNER OF SECTION 35, T2N, R67W.
  - WELL FOOTAGES ARE MEASURED AT RIGHT ANGLES TO THE SECTION LINES.
  - NO. 1 & NO. 2 AS SHOWN HEREON ARE GOVERNMENT LOTS 1 & 2 PER THE ORIGINAL GLO SURVEY.

**WELL PAD - BAJA BERG 14-35HZ**

MULTI-WELL PLAN  
 BAJA BERG 35-6HZ, BAJA BERG 35-7HZ,  
 BAJA BERG 35-8HZ & BAJA BERG 35-9HZ  
 LOCATED IN SECTIONS 35 & 36, T2N, R67W, 6TH P.M. &  
 LOCATED IN SECTION 31, T2N, R66W, 6TH P.M.  
 WELD COUNTY, COLORADO

**Kerr-McGee Oil &  
 Gas Onshore L.P.**

1099 18th Street  
 Denver, Colorado 80202

**609 CONSULTING, LLC**

SHERIDAN OFFICE  
 1095 Saberton Avenue  
 Sheridan, Wyoming 82801  
 Phone 307-674-0609

LOVELAND OFFICE  
 1635 Foxtrail Drive, Suite 204  
 Loveland, Colorado 80538  
 Phone 970-776-4331

DRAFTED BY: LMO	CHECKED BY: RKF	SHEET NO: <b>1C</b> 1C OF 1
DATE DRAFTED: 2/26/18	DATE SURVEYED: 2/12/18	
REVISED:	FILE NAME: 16-136	

K:\AMADARCO\2016\136\_BAJA\_BERG\_T2N\_R67W\_SEC\_35\PLATS\14-35HZ\BAJA\_BERG\_14-35HZ.dwg, 2/23/2018 8:12:41 AM, ethan