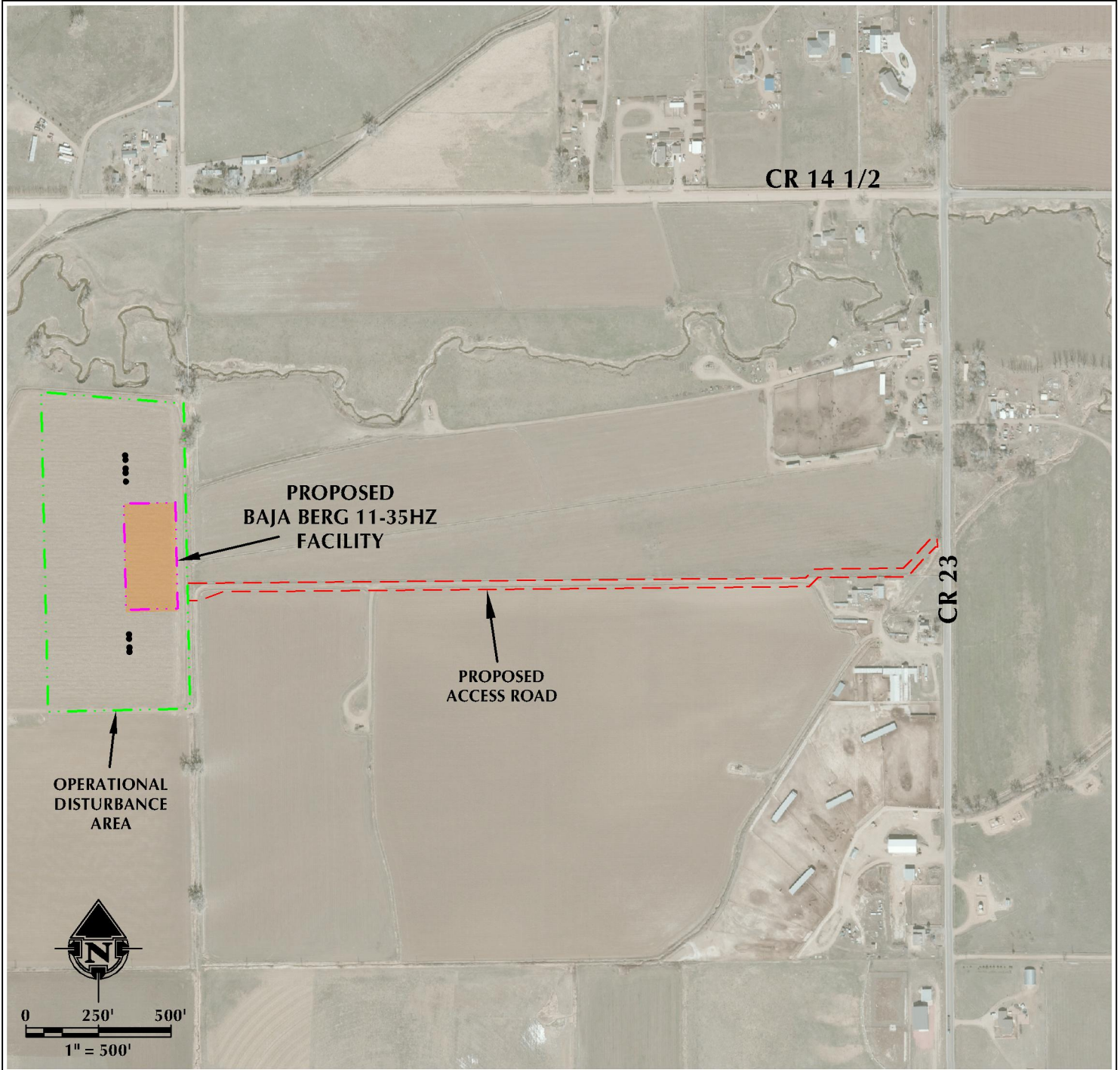


ACCESS MAP BAJA BERG 11-35HZ

E1/2 SW1/4 SECTION 35, TOWNSHIP 2 NORTH, RANGE 67 WEST, 6TH P.M.



LEGEND

- PROPOSED WELL
- ACCESS
- PROPOSED FACILITY
- ▭ DISTURBANCE BOUNDARY

K:\MINDROD\2016\2016_136_BAJA_BERG_T2L_N67W_SEC_35\DWG\BAJA_BERG.DWG, 3/9/2018 1:30:01 PM, jllb



609 CONSULTING, LLC
 LOVELAND OFFICE
 1635 Fossil Drive, Suite 204
 Loveland, Colorado 80538
 Phone: 970-776-4331

SHERIDAN OFFICE
 1095 Saberton Avenue
 Sheridan, Wyoming 82801
 Phone: 307-674-0609

DATE SURVEYED: 2/12/18
 DATE: 2/22/18
 DRAFTER: DD
 REVISED: 3/9/18

DATA SOURCES:
 - AERIAL COURTESY OF ESRI, INC.

PREPARED FOR:
Kerr-McGee Oil & Gas Onshore L.P.