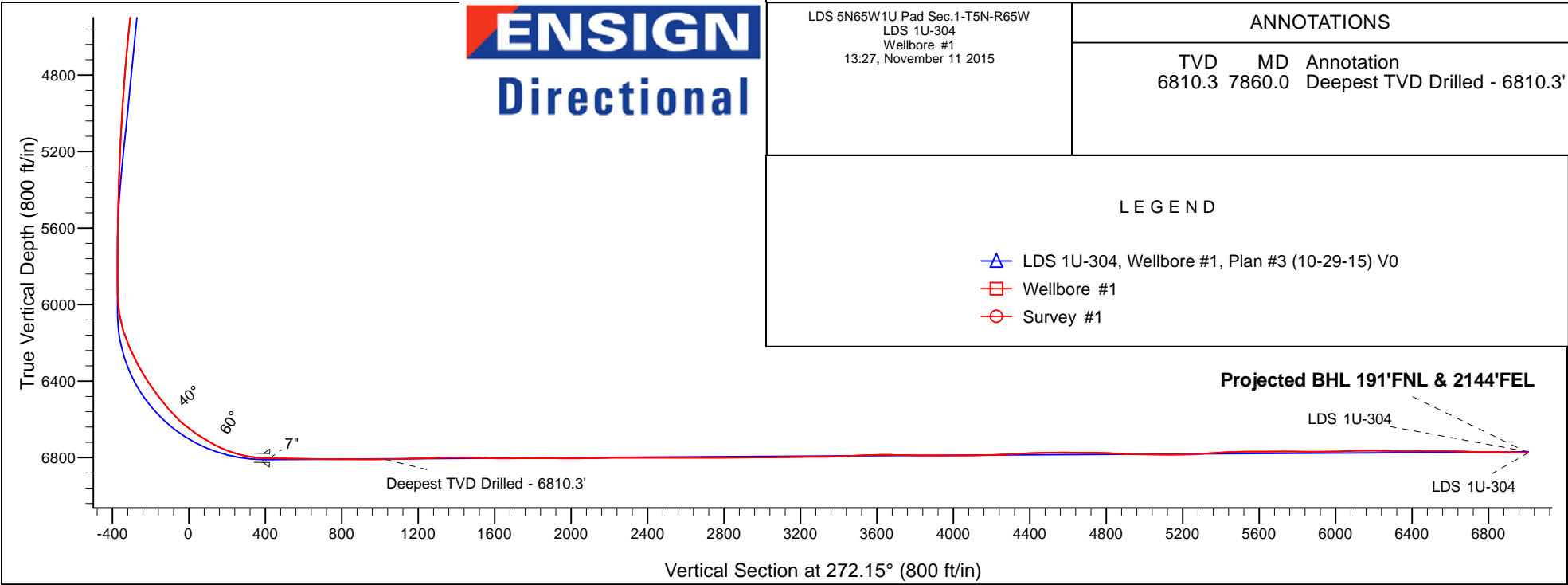


PETROLEUM DEVELOPMENT CORP DJ Basin

Well Name: **LDS 1U-304**  
Surface Location: LDS 5N65W1U Pad Sec.1-T5N-R65W  
North American Datum 1983 , US State Plane 1983, Colorado Northern Zone  
Ground Elevation: 4640.0  
+N/-S +E/-W Northing Easting Latitude Longitude Slot  
0.0 0.0 1402168.57 3249616.70 40.433890 -104.603280  
RKB - 13' WELL @ 4653.0ft (RKB - 13')

FINAL SURVEY

Projected Bottom Hole Location  
13849'MD 6775'TVD 263'N & 7003'W of SHL  
88.8 degree Incl @ 266.4 degree AZM





# Directional

## PETROLEUM DEVELOPMENT CORP DJ Basin

SEC.1-T5N-R65W

LDS 5N65W1U Pad Sec.1-T5N-R65W

LDS 1U-304

Wellbore #1

Survey: Survey #1

## Standard Survey Report

11 November, 2015

<b>Company:</b>	PETROLEUM DEVELOPMENT CORP DJ Basin	<b>Local Co-ordinate Reference:</b>	Well LDS 1U-304
<b>Project:</b>	SEC.1-T5N-R65W	<b>TVD Reference:</b>	WELL @ 4653.0ft (RKB - 13')
<b>Site:</b>	LDS 5N65W1U Pad Sec.1-T5N-R65W	<b>MD Reference:</b>	WELL @ 4653.0ft (RKB - 13')
<b>Well:</b>	LDS 1U-304	<b>North Reference:</b>	True
<b>Wellbore:</b>	Wellbore #1	<b>Survey Calculation Method:</b>	Minimum Curvature
<b>Design:</b>	Wellbore #1	<b>Database:</b>	US_EDM

<b>Project</b>	SEC.1-T5N-R65W, Weld County, CO		
<b>Map System:</b>	US State Plane 1983	<b>System Datum:</b>	Mean Sea Level
<b>Geo Datum:</b>	North American Datum 1983		Using Well Reference Point
<b>Map Zone:</b>	Colorado Northern Zone		Using geodetic scale factor

Site		LDS 5N65W1U Pad Sec.1-T5N-R65W			
Site Position:		Northing:	1,402,064.02 usft	Latitude:	40.433600
From:	Lat/Long	Easting:	3,249,723.55 usft	Longitude:	-104.602900
Position Uncertainty:	0.0 ft	Slot Radius:	13-3/16 "	Grid Convergence:	0.58 °

Well	LDS 1U-304					
Well Position	+N/-S	0.0 ft	Northing:	1,402,168.57 usft	Latitude:	40.433890
	+E/-W	0.0 ft	Easting:	3,249,616.71 usft	Longitude:	-104.603280
Position Uncertainty		0.0 ft	Wellhead Elevation:	ft	Ground Level:	4,640.0 ft

<b>Wellbore</b>	Wellbore #1				
<b>Magnetics</b>	<b>Model Name</b>	<b>Sample Date</b>	<b>Declination (°)</b>	<b>Dip Angle (°)</b>	<b>Field Strength (nT)</b>
	IGRF2010	10/30/2015	8.19	66.95	52,706

<b>Design</b>	Wellbore #1				
<b>Audit Notes:</b>					
<b>Version:</b>	1.0	<b>Phase:</b>	ACTUAL	<b>Tie On Depth:</b>	0.0
<b>Vertical Section:</b>	<b>Depth From (TVD) (ft)</b>	<b>+N/-S (ft)</b>	<b>+E/-W (ft)</b>	<b>Direction (°)</b>	
	0.0	0.0	0.0	272.15	

<b>Survey Program</b>	<b>Date</b>	11/11/2015			
<b>From (ft)</b>	<b>To (ft)</b>	<b>Survey (Wellbore)</b>	<b>Tool Name</b>	<b>Description</b>	
165.0	13,849.0	Survey #1 (Wellbore #1)	MWD	MWD - Standard	

<b>Survey</b>										
<b>Measured Depth (ft)</b>	<b>Inclination (°)</b>	<b>Azimuth (°)</b>	<b>Vertical Depth (ft)</b>	<b>+N/-S (ft)</b>	<b>+E/-W (ft)</b>	<b>Vertical Section (ft)</b>	<b>Dogleg Rate (°/100usft)</b>	<b>Build Rate (°/100usft)</b>	<b>Turn Rate (°/100usft)</b>	
0.0	0.00	0.00	0.0	0.0	0.0	0.0	0.00	0.00	0.00	
165.0	1.10	266.80	165.0	-0.1	-1.6	1.6	0.67	0.67	0.00	
257.0	1.30	266.10	257.0	-0.2	-3.5	3.5	0.22	0.22	-0.76	
348.0	1.10	256.90	347.9	-0.5	-5.4	5.4	0.30	-0.22	-10.11	
441.0	1.20	257.40	440.9	-0.9	-7.2	7.2	0.11	0.11	0.54	
532.0	1.40	262.00	531.9	-1.3	-9.2	9.2	0.25	0.22	5.05	
624.0	1.10	261.00	623.9	-1.5	-11.2	11.2	0.33	-0.33	-1.09	
717.0	1.10	276.30	716.9	-1.6	-13.0	12.9	0.31	0.00	16.45	
809.0	1.20	272.70	808.9	-1.4	-14.8	14.8	0.13	0.11	-3.91	
866.0	1.50	261.30	865.8	-1.5	-16.2	16.1	0.70	0.53	-20.00	

<b>Company:</b>	PETROLEUM DEVELOPMENT CORP DJ Basin	<b>Local Co-ordinate Reference:</b>	Well LDS 1U-304
<b>Project:</b>	SEC.1-T5N-R65W	<b>TVD Reference:</b>	WELL @ 4653.0ft (RKB - 13')
<b>Site:</b>	LDS 5N65W1U Pad Sec.1-T5N-R65W	<b>MD Reference:</b>	WELL @ 4653.0ft (RKB - 13')
<b>Well:</b>	LDS 1U-304	<b>North Reference:</b>	True
<b>Wellbore:</b>	Wellbore #1	<b>Survey Calculation Method:</b>	Minimum Curvature
<b>Design:</b>	Wellbore #1	<b>Database:</b>	US_EDM

Survey									
Measured Depth (ft)	Inclination (°)	Azimuth (°)	Vertical Depth (ft)	+N/-S (ft)	+E/-W (ft)	Vertical Section (ft)	Dogleg Rate (°/100usft)	Build Rate (°/100usft)	Turn Rate (°/100usft)
1,004.0	0.40	250.20	1,003.8	-2.0	-18.4	18.3	0.80	-0.80	-8.04
1,097.0	0.70	249.40	1,096.8	-2.3	-19.2	19.1	0.32	-0.32	-0.86
1,190.0	0.40	228.80	1,189.8	-2.7	-20.0	19.9	0.38	-0.32	-22.15
1,284.0	0.30	258.20	1,283.8	-3.0	-20.5	20.4	0.22	-0.11	31.28
1,377.0	0.40	279.40	1,376.8	-3.0	-21.1	20.9	0.17	0.11	22.80
1,470.0	2.60	70.60	1,469.8	-2.2	-19.4	19.3	3.18	2.37	162.58
1,565.0	3.50	56.00	1,564.6	0.1	-15.0	14.9	1.24	0.95	-15.37
1,657.0	4.20	40.20	1,656.4	4.3	-10.5	10.6	1.37	0.76	-17.17
1,749.0	5.80	58.60	1,748.1	9.3	-4.3	4.7	2.44	1.74	20.00
1,841.0	7.80	57.90	1,839.4	15.0	4.9	-4.4	2.18	2.17	-0.76
1,932.0	7.50	53.00	1,929.6	21.9	14.9	-14.1	0.79	-0.33	-5.38
2,024.0	7.50	51.80	2,020.8	29.2	24.4	-23.3	0.17	0.00	-1.30
2,117.0	6.90	49.90	2,113.1	36.5	33.5	-32.1	0.69	-0.65	-2.04
2,209.0	8.70	58.80	2,204.3	43.7	43.7	-42.0	2.35	1.96	9.67
2,301.0	8.40	56.20	2,295.2	51.1	55.2	-53.2	0.53	-0.33	-2.83
2,393.0	8.30	53.20	2,386.3	58.8	66.1	-63.8	0.49	-0.11	-3.26
2,486.0	7.80	49.30	2,478.3	66.9	76.3	-73.7	0.80	-0.54	-4.19
2,579.0	9.10	63.70	2,570.3	74.3	87.6	-84.8	2.66	1.40	15.48
2,671.0	8.80	60.40	2,661.2	81.0	100.3	-97.2	0.65	-0.33	-3.59
2,763.0	9.00	57.90	2,752.1	88.3	112.5	-109.1	0.47	0.22	-2.72
2,855.0	8.50	56.70	2,843.0	95.8	124.3	-120.6	0.58	-0.54	-1.30
2,947.0	8.30	55.30	2,934.1	103.4	135.4	-131.4	0.31	-0.22	-1.52
3,040.0	7.90	54.40	3,026.1	110.9	146.1	-141.9	0.45	-0.43	-0.97
3,132.0	7.20	52.00	3,117.3	118.1	155.8	-151.3	0.83	-0.76	-2.61
3,225.0	8.60	59.20	3,209.4	125.3	166.4	-161.6	1.84	1.51	7.74
3,317.0	7.80	55.30	3,300.5	132.4	177.4	-172.3	1.06	-0.87	-4.24
3,409.0	8.80	62.90	3,391.5	139.1	188.8	-183.5	1.61	1.09	8.26
3,501.0	8.10	56.90	3,482.5	145.9	200.5	-194.9	1.22	-0.76	-6.52
3,597.0	8.40	55.80	3,577.6	153.5	212.0	-206.1	0.35	0.31	-1.15
3,692.0	8.20	54.40	3,671.6	161.3	223.2	-217.0	0.30	-0.21	-1.47
3,788.0	8.20	53.50	3,766.6	169.4	234.3	-227.8	0.13	0.00	-0.94
3,883.0	8.30	52.10	3,860.6	177.6	245.2	-238.3	0.24	0.11	-1.47
3,978.0	7.50	51.60	3,954.7	185.7	255.4	-248.3	0.85	-0.84	-0.53
4,073.0	7.00	61.10	4,048.9	192.3	265.3	-258.0	1.37	-0.53	10.00
4,169.0	6.70	59.70	4,144.2	198.0	275.3	-267.7	0.36	-0.31	-1.46
4,264.0	7.50	69.90	4,238.5	202.9	285.9	-278.1	1.57	0.84	10.74
4,359.0	6.40	69.00	4,332.8	207.0	296.7	-288.7	1.16	-1.16	-0.95
4,455.0	7.70	60.20	4,428.1	212.1	307.3	-299.1	1.76	1.35	-9.17
4,550.0	7.20	59.00	4,522.3	218.3	317.9	-309.5	0.55	-0.53	-1.26
4,646.0	6.50	54.20	4,617.6	224.6	327.4	-318.8	0.94	-0.73	-5.00
4,741.0	6.40	50.70	4,712.0	231.1	335.9	-327.0	0.43	-0.11	-3.68
4,836.0	6.00	50.70	4,806.5	237.6	343.8	-334.7	0.42	-0.42	0.00
4,932.0	5.60	48.60	4,902.0	243.8	351.2	-341.9	0.47	-0.42	-2.19
5,027.0	5.30	46.00	4,996.5	250.0	357.9	-348.3	0.41	-0.32	-2.74

<b>Company:</b>	PETROLEUM DEVELOPMENT CORP DJ Basin	<b>Local Co-ordinate Reference:</b>	Well LDS 1U-304
<b>Project:</b>	SEC.1-T5N-R65W	<b>TVD Reference:</b>	WELL @ 4653.0ft (RKB - 13')
<b>Site:</b>	LDS 5N65W1U Pad Sec.1-T5N-R65W	<b>MD Reference:</b>	WELL @ 4653.0ft (RKB - 13')
<b>Well:</b>	LDS 1U-304	<b>North Reference:</b>	True
<b>Wellbore:</b>	Wellbore #1	<b>Survey Calculation Method:</b>	Minimum Curvature
<b>Design:</b>	Wellbore #1	<b>Database:</b>	US_EDM

Survey									
Measured Depth (ft)	Inclination (°)	Azimuth (°)	Vertical Depth (ft)	+N/-S (ft)	+E/-W (ft)	Vertical Section (ft)	Dogleg Rate (°/100usft)	Build Rate (°/100usft)	Turn Rate (°/100usft)
5,123.0	4.90	46.30	5,092.2	255.9	364.0	-354.2	0.42	-0.42	0.31
5,218.0	4.20	41.20	5,186.9	261.3	369.3	-359.2	0.85	-0.74	-5.37
5,313.0	3.10	54.90	5,281.7	265.4	373.6	-363.4	1.47	-1.16	14.42
5,409.0	1.40	110.80	5,377.6	266.5	376.9	-366.6	2.70	-1.77	58.23
5,504.0	1.10	105.60	5,472.6	265.8	378.8	-368.6	0.34	-0.32	-5.47
5,600.0	0.90	107.00	5,568.6	265.3	380.4	-370.2	0.21	-0.21	1.46
5,695.0	0.70	99.60	5,663.5	265.0	381.7	-371.5	0.24	-0.21	-7.79
5,791.0	0.80	162.70	5,759.5	264.3	382.5	-372.3	0.82	0.10	65.73
5,886.0	1.10	184.10	5,854.5	262.7	382.6	-372.5	0.48	0.32	22.53
5,982.0	1.10	211.40	5,950.5	261.0	382.1	-372.0	0.54	0.00	28.44
6,077.0	8.70	267.80	6,045.1	260.0	374.4	-364.4	8.57	8.00	59.37
6,172.0	17.70	271.90	6,137.5	260.2	352.8	-342.8	9.52	9.47	4.32
6,268.0	23.60	271.50	6,227.3	261.2	318.9	-308.9	6.15	6.15	-0.42
6,363.0	27.70	271.70	6,312.9	262.3	277.8	-267.8	4.32	4.32	0.21
6,459.0	34.00	268.90	6,395.3	262.5	228.6	-218.6	6.73	6.56	-2.92
6,554.0	36.30	267.50	6,473.0	260.7	174.0	-164.1	2.57	2.42	-1.47
6,649.0	40.10	272.40	6,547.6	260.8	115.3	-105.4	5.11	4.00	5.16
6,745.0	47.70	272.70	6,616.8	263.8	48.8	-38.9	7.92	7.92	0.31
6,840.0	57.80	268.50	6,674.2	264.4	-26.7	36.5	11.19	10.63	-4.42
6,936.0	59.70	268.30	6,724.0	262.1	-108.7	118.4	1.99	1.98	-0.21
7,031.0	69.90	272.90	6,764.4	263.1	-194.5	204.2	11.59	10.74	4.84
7,126.0	77.50	272.20	6,791.1	267.2	-285.5	295.3	8.03	8.00	-0.74
7,222.0	88.30	271.70	6,802.9	270.4	-380.6	390.5	11.26	11.25	-0.52
7,254.2	88.45	272.38	6,803.8	271.5	-412.8	422.6	2.17	0.45	2.12
7"									
7,288.0	88.60	273.10	6,804.7	273.2	-446.5	456.4	2.17	0.45	2.12
7,383.0	89.00	271.90	6,806.7	277.3	-541.4	551.4	1.33	0.42	-1.26
7,478.0	89.20	271.30	6,808.2	280.0	-636.3	646.4	0.67	0.21	-0.63
7,574.0	90.10	271.00	6,808.8	281.9	-732.3	742.4	0.99	0.94	-0.31
7,669.0	90.00	270.80	6,808.7	283.4	-827.3	837.3	0.24	-0.11	-0.21
7,764.0	89.00	269.20	6,809.5	283.4	-922.3	932.3	1.99	-1.05	-1.68
7,860.0	90.10	268.70	6,810.3	281.6	-1,018.3	1,028.1	1.26	1.15	-0.52
Deepest TVD Drilled - 6810.3'									
7,952.0	92.10	269.20	6,808.5	279.9	-1,110.2	1,120.0	2.24	2.17	0.54
8,044.0	92.20	268.90	6,805.0	278.4	-1,202.2	1,211.8	0.34	0.11	-0.33
8,135.0	92.90	270.10	6,801.0	277.6	-1,293.1	1,302.6	1.53	0.77	1.32
8,227.0	89.10	271.20	6,799.4	278.7	-1,385.0	1,394.5	4.30	-4.13	1.20
8,319.0	88.60	270.80	6,801.2	280.3	-1,477.0	1,486.5	0.70	-0.54	-0.43
8,411.0	88.60	270.10	6,803.5	281.0	-1,569.0	1,578.4	0.76	0.00	-0.76
8,503.0	90.40	269.10	6,804.3	280.3	-1,661.0	1,670.3	2.24	1.96	-1.09
8,596.0	90.60	269.20	6,803.5	279.0	-1,753.9	1,763.2	0.24	0.22	0.11
8,688.0	89.90	269.00	6,803.1	277.5	-1,845.9	1,855.0	0.79	-0.76	-0.22
8,780.0	88.80	269.90	6,804.1	276.6	-1,937.9	1,946.9	1.54	-1.20	0.98

<b>Company:</b>	PETROLEUM DEVELOPMENT CORP DJ Basin	<b>Local Co-ordinate Reference:</b>	Well LDS 1U-304
<b>Project:</b>	SEC.1-T5N-R65W	<b>TVD Reference:</b>	WELL @ 4653.0ft (RKB - 13')
<b>Site:</b>	LDS 5N65W1U Pad Sec.1-T5N-R65W	<b>MD Reference:</b>	WELL @ 4653.0ft (RKB - 13')
<b>Well:</b>	LDS 1U-304	<b>North Reference:</b>	True
<b>Wellbore:</b>	Wellbore #1	<b>Survey Calculation Method:</b>	Minimum Curvature
<b>Design:</b>	Wellbore #1	<b>Database:</b>	US_EDM

Survey									
Measured Depth (ft)	Inclination (°)	Azimuth (°)	Vertical Depth (ft)	+N/-S (ft)	+E/-W (ft)	Vertical Section (ft)	Dogleg Rate (°/100usft)	Build Rate (°/100usft)	Turn Rate (°/100usft)
8,873.0	91.00	270.60	6,804.3	277.0	-2,030.9	2,039.9	2.48	2.37	0.75
8,965.0	90.90	270.60	6,802.8	278.0	-2,122.9	2,131.8	0.11	-0.11	0.00
9,058.0	90.70	270.50	6,801.5	278.9	-2,215.9	2,224.8	0.24	-0.22	-0.11
9,150.0	89.90	270.50	6,801.0	279.7	-2,307.9	2,316.7	0.87	-0.87	0.00
9,242.0	90.00	270.50	6,801.1	280.5	-2,399.9	2,408.7	0.11	0.11	0.00
9,334.0	89.50	270.50	6,801.5	281.3	-2,491.9	2,500.7	0.54	-0.54	0.00
9,426.0	90.70	270.10	6,801.3	281.8	-2,583.9	2,592.6	1.37	1.30	-0.43
9,518.0	89.10	268.30	6,801.5	280.5	-2,675.8	2,684.5	2.62	-1.74	-1.96
9,611.0	90.80	268.20	6,801.5	277.7	-2,768.8	2,777.3	1.83	1.83	-0.11
9,703.0	90.70	269.80	6,800.3	276.1	-2,860.8	2,869.1	1.74	-0.11	1.74
9,796.0	90.20	269.00	6,799.6	275.1	-2,953.8	2,962.0	1.01	-0.54	-0.86
9,888.0	90.40	269.00	6,799.1	273.5	-3,045.8	3,053.9	0.22	0.22	0.00
9,984.0	90.90	270.10	6,798.0	272.7	-3,141.7	3,149.8	1.26	0.52	1.15
10,079.0	90.70	269.90	6,796.7	272.7	-3,236.7	3,244.7	0.30	-0.21	-0.21
10,174.0	90.00	268.30	6,796.1	271.2	-3,331.7	3,339.5	1.84	-0.74	-1.68
10,269.0	93.70	271.90	6,793.1	271.4	-3,426.6	3,434.4	5.43	3.89	3.79
10,365.0	91.80	272.00	6,788.5	274.7	-3,522.5	3,530.3	1.98	-1.98	0.10
10,460.0	90.70	272.00	6,786.4	278.0	-3,617.4	3,625.3	1.16	-1.16	0.00
10,555.0	88.50	268.70	6,787.0	278.5	-3,712.4	3,720.2	4.17	-2.32	-3.47
10,651.0	89.10	269.80	6,789.1	277.3	-3,808.3	3,816.0	1.30	0.63	1.15
10,746.0	90.10	269.40	6,789.7	276.6	-3,903.3	3,910.9	1.13	1.05	-0.42
10,841.0	90.00	268.30	6,789.6	274.7	-3,998.3	4,005.8	1.16	-0.11	-1.16
10,937.0	90.40	267.80	6,789.3	271.5	-4,094.2	4,101.5	0.67	0.42	-0.52
11,032.0	92.40	270.10	6,787.0	269.7	-4,189.2	4,196.4	3.21	2.11	2.42
11,127.0	92.90	270.50	6,782.6	270.2	-4,284.1	4,291.2	0.67	0.53	0.42
11,223.0	92.70	271.00	6,777.9	271.5	-4,380.0	4,387.1	0.56	-0.21	0.52
11,318.0	91.30	271.00	6,774.6	273.1	-4,474.9	4,482.0	1.47	-1.47	0.00
11,414.0	89.30	272.60	6,774.1	276.1	-4,570.8	4,578.0	2.67	-2.08	1.67
11,509.0	90.20	272.40	6,774.5	280.3	-4,665.7	4,673.0	0.97	0.95	-0.21
11,604.0	88.20	269.90	6,775.8	282.2	-4,760.7	4,767.9	3.37	-2.11	-2.63
11,700.0	87.10	269.40	6,779.8	281.6	-4,856.6	4,863.8	1.26	-1.15	-0.52
11,795.0	89.00	268.30	6,783.0	279.7	-4,951.5	4,958.5	2.31	2.00	-1.16
11,891.0	89.60	265.70	6,784.2	274.7	-5,047.4	5,054.1	2.78	0.63	-2.71
11,986.0	88.90	266.90	6,785.4	268.5	-5,142.2	5,148.6	1.46	-0.74	1.26
12,082.0	93.50	270.10	6,783.4	266.0	-5,238.1	5,244.4	5.84	4.79	3.33
12,177.0	93.40	269.80	6,777.7	265.9	-5,332.9	5,339.1	0.33	-0.11	-0.32
12,273.0	93.40	269.80	6,772.0	265.6	-5,428.7	5,434.9	0.00	0.00	0.00
12,368.0	90.10	272.00	6,769.1	267.1	-5,523.7	5,529.8	4.17	-3.47	2.32
12,463.0	90.20	271.50	6,768.8	270.0	-5,618.6	5,624.8	0.54	0.11	-0.53
12,559.0	90.20	270.80	6,768.5	271.9	-5,714.6	5,720.8	0.73	0.00	-0.73
12,654.0	88.90	271.90	6,769.2	274.2	-5,809.6	5,815.8	1.79	-1.37	1.16
12,749.0	90.00	271.90	6,770.2	277.3	-5,904.5	5,910.8	1.16	1.16	0.00
12,845.0	92.40	271.30	6,768.1	280.0	-6,000.4	6,006.7	2.58	2.50	-0.63
12,940.0	91.90	271.90	6,764.6	282.6	-6,095.3	6,101.6	0.82	-0.53	0.63

<b>Company:</b>	PETROLEUM DEVELOPMENT CORP DJ Basin	<b>Local Co-ordinate Reference:</b>	Well LDS 1U-304
<b>Project:</b>	SEC.1-T5N-R65W	<b>TVD Reference:</b>	WELL @ 4653.0ft (RKB - 13')
<b>Site:</b>	LDS 5N65W1U Pad Sec.1-T5N-R65W	<b>MD Reference:</b>	WELL @ 4653.0ft (RKB - 13')
<b>Well:</b>	LDS 1U-304	<b>North Reference:</b>	True
<b>Wellbore:</b>	Wellbore #1	<b>Survey Calculation Method:</b>	Minimum Curvature
<b>Design:</b>	Wellbore #1	<b>Database:</b>	US_EDM

Survey										
Measured Depth (ft)	Inclination (°)	Azimuth (°)	Vertical Depth (ft)	+N/-S (ft)	+E/-W (ft)	Vertical Section (ft)	Dogleg Rate (°/100usft)	Build Rate (°/100usft)	Turn Rate (°/100usft)	
13,035.0	89.00	272.90	6,763.8	286.6	-6,190.2	6,196.6	3.23	-3.05	1.05	
13,131.0	88.70	269.40	6,765.8	288.6	-6,286.2	6,292.6	3.66	-0.31	-3.65	
13,226.0	90.00	269.40	6,766.8	287.6	-6,381.2	6,387.5	1.37	1.37	0.00	
13,322.0	90.70	269.80	6,766.3	286.9	-6,477.2	6,483.4	0.84	0.73	0.42	
13,417.0	89.30	268.00	6,766.3	285.1	-6,572.1	6,578.2	2.40	-1.47	-1.89	
13,512.0	87.80	265.70	6,768.7	279.8	-6,667.0	6,672.8	2.89	-1.58	-2.42	
13,608.0	88.90	268.00	6,771.4	274.6	-6,762.8	6,768.3	2.65	1.15	2.40	
13,703.0	89.60	267.60	6,772.7	270.9	-6,857.7	6,863.0	0.85	0.74	-0.42	
13,789.0	88.80	266.40	6,773.9	266.4	-6,943.6	6,948.7	1.68	-0.93	-1.40	
13,849.0	88.80	266.40	6,775.1	262.7	-7,003.4	7,008.4	0.00	0.00	0.00	

Casing Points					
Measured Depth (ft)	Vertical Depth (ft)	Name	Casing Diameter (")	Hole Diameter (")	
7,254.2	6,803.8	7"	7	8-3/4	

Survey Annotations					
Measured Depth (ft)	Vertical Depth (ft)	Local Coordinates		Comment	
		+N/-S (ft)	+E/-W (ft)		
7,860.0	6,810.3	281.6	-1,018.3	Deepest TVD Drilled - 6810.3'	

Checked By: _____	Approved By: _____	Date: _____
-------------------	--------------------	-------------