

PETROLEUM DEVELOPMENT CORP DJ Basin

Well Name: **LDS 1U-234**

Surface Location: LDS 5N65W1U Pad Sec.1-T5N-R65W

North American Datum 1983 , US State Plane 1983, Colorado Northern Zone

Ground Elevation: 4639.0

+N/-S +E/-W Northing Easting Latitude Longitude Slot

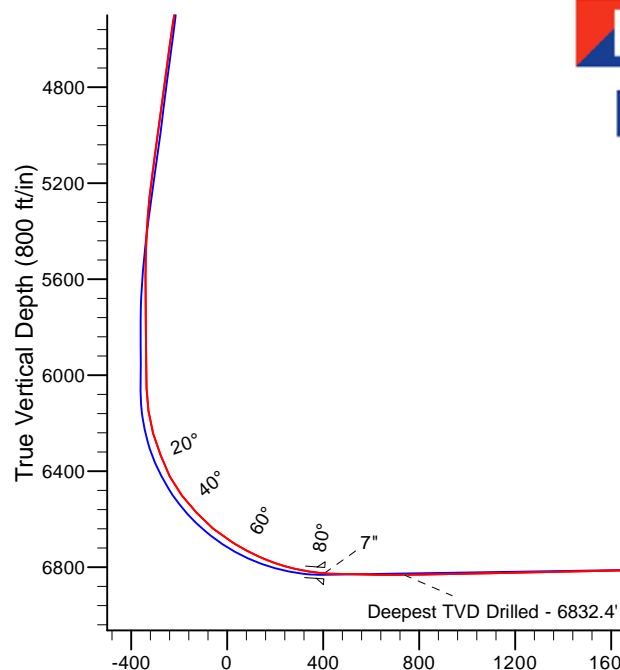
0.0 0.01402146.93 3249639.19 40.433830 -104.603200

RKB - 13' WELL @ 4652.0ft (RKB - 13')

FINAL SURVEY

Projected Bottom Hole Location
13880'MD 6718'TVD 93'N & 7028'W of SHL
94.4 degree Incl @ 270.1 degree AZM

ENSIGN
Directional



LDS 5N65W1U Pad Sec.1-T5N-R65W
LDS 1U-234
Wellbore #1
13:10, November 18 2015

ANNOTATIONS

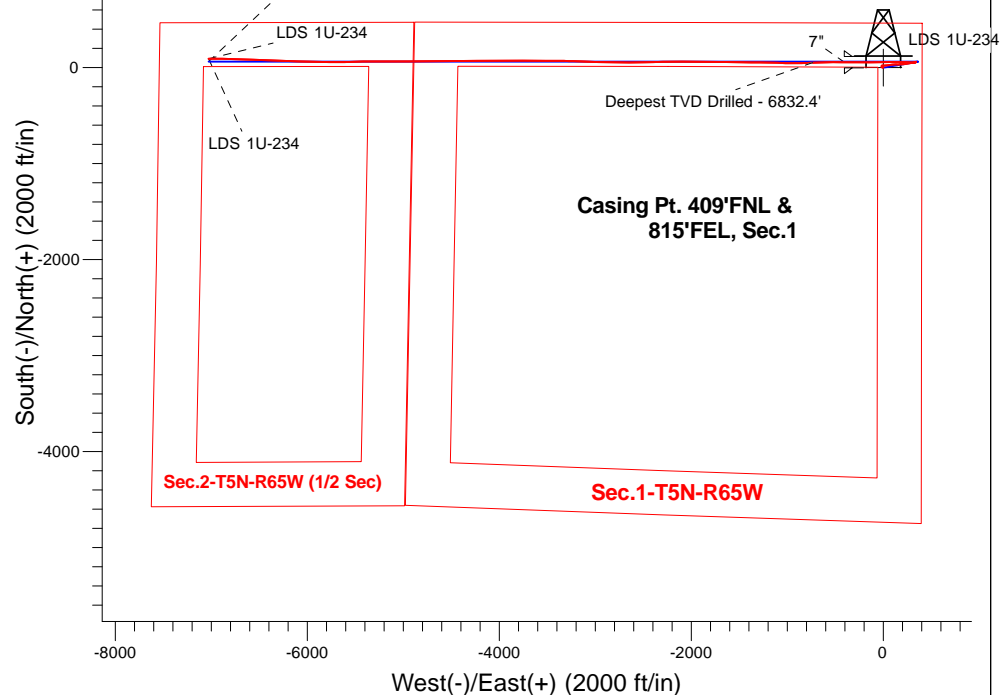
TVD	MD	Annotation
6832.4	7585.0	Deepest TVD Drilled - 6832.4'

LEGEND

- LDS 1U-234, Wellbore #1, Plan #3 (11-9-15) R V0
- Wellbore #1
- Survey #1

Projected BHL 383'FNL & 2144'FEL, Sec.2

SHL 467'FNL & 410'FEL, Sec.1



Projected BHL 383'FNL & 2144'FEL, Sec.2

LDS 1U-234

LDS 1U-234



Directional

PETROLEUM DEVELOPMENT CORP DJ Basin

SEC.1-T5N-R65W

LDS 5N65W1U Pad Sec.1-T5N-R65W

LDS 1U-234

Wellbore #1

Survey: Survey #1

Standard Survey Report

18 November, 2015

Company:	PETROLEUM DEVELOPMENT CORP DJ Basin	Local Co-ordinate Reference:	Well LDS 1U-234
Project:	SEC.1-T5N-R65W	TVD Reference:	WELL @ 4652.0ft (RKB - 13')
Site:	LDS 5N65W1U Pad Sec.1-T5N-R65W	MD Reference:	WELL @ 4652.0ft (RKB - 13')
Well:	LDS 1U-234	North Reference:	True
Wellbore:	Wellbore #1	Survey Calculation Method:	Minimum Curvature
Design:	Wellbore #1	Database:	US_EDM

Project	SEC.1-T5N-R65W, Weld County, CO		
Map System:	US State Plane 1983	System Datum:	Mean Sea Level
Geo Datum:	North American Datum 1983		Using Well Reference Point
Map Zone:	Colorado Northern Zone		Using geodetic scale factor

Site	LDS 5N65W1U Pad Sec.1-T5N-R65W				
Site Position:		Northing:	1,402,064.02 usft	Latitude:	40.433600
From:	Lat/Long	Easting:	3,249,723.55 usft	Longitude:	-104.602900
Position Uncertainty:	0.0 ft	Slot Radius:	13-3/16 "	Grid Convergence:	0.58 °

Well	LDS 1U-234					
Well Position	+N/-S	0.0 ft	Northing:	1,402,146.93 usft	Latitude:	40.433830
	+E/-W	0.0 ft	Easting:	3,249,639.20 usft	Longitude:	-104.603200
Position Uncertainty		0.0 ft	Wellhead Elevation:	ft	Ground Level:	4,639.0 ft

Wellbore	Wellbore #1				
Magnetics	Model Name	Sample Date	Declination (°)	Dip Angle (°)	Field Strength (nT)
	IGRF2010	11/9/2015	8.19	66.95	52,703

Design	Wellbore #1				
Audit Notes:					
Version:	1.0	Phase:	ACTUAL	Tie On Depth:	0.0
Vertical Section:	Depth From (TVD) (ft)	+N/-S (ft)	+E/-W (ft)	Direction (°)	
	0.0	0.0	0.0	270.76	

Survey Program	Date	11/18/2015			
From (ft)	To (ft)	Survey (Wellbore)	Tool Name	Description	
165.0	13,880.0	Survey #1 (Wellbore #1)	MWD	MWD - Standard	

Survey										
Measured Depth (ft)	Inclination (°)	Azimuth (°)	Vertical Depth (ft)	+N/-S (ft)	+E/-W (ft)	Vertical Section (ft)	Dogleg Rate (°/100usft)	Build Rate (°/100usft)	Turn Rate (°/100usft)	
0.0	0.00	0.00	0.0	0.0	0.0	0.0	0.00	0.00	0.00	
165.0	1.10	290.30	165.0	0.5	-1.5	1.5	0.67	0.67	0.00	
257.0	1.40	277.70	257.0	1.0	-3.4	3.4	0.44	0.33	-13.70	
348.0	1.30	280.70	347.9	1.3	-5.5	5.6	0.13	-0.11	3.30	
441.0	1.10	275.40	440.9	1.6	-7.5	7.5	0.25	-0.22	-5.70	
532.0	1.20	278.00	531.9	1.8	-9.3	9.3	0.12	0.11	2.86	
624.0	1.60	283.60	623.9	2.3	-11.5	11.5	0.46	0.43	6.09	
717.0	1.10	319.70	716.9	3.3	-13.3	13.4	1.03	-0.54	38.82	
809.0	0.60	327.60	808.8	4.3	-14.2	14.2	0.56	-0.54	8.59	
1,005.0	0.20	354.80	1,004.8	5.6	-14.7	14.8	0.22	-0.20	13.88	

Company:	PETROLEUM DEVELOPMENT CORP DJ Basin	Local Co-ordinate Reference:	Well LDS 1U-234
Project:	SEC.1-T5N-R65W	TVD Reference:	WELL @ 4652.0ft (RKB - 13')
Site:	LDS 5N65W1U Pad Sec.1-T5N-R65W	MD Reference:	WELL @ 4652.0ft (RKB - 13')
Well:	LDS 1U-234	North Reference:	True
Wellbore:	Wellbore #1	Survey Calculation Method:	Minimum Curvature
Design:	Wellbore #1	Database:	US_EDM

Survey									
Measured Depth (ft)	Inclination (°)	Azimuth (°)	Vertical Depth (ft)	+N/-S (ft)	+E/-W (ft)	Vertical Section (ft)	Dogleg Rate (°/100usft)	Build Rate (°/100usft)	Turn Rate (°/100usft)
1,099.0	0.30	242.50	1,098.8	5.6	-15.0	15.0	0.45	0.11	-119.47
1,192.0	0.50	322.10	1,191.8	5.8	-15.4	15.5	0.57	0.22	85.59
1,286.0	0.50	324.20	1,285.8	6.5	-15.9	16.0	0.02	0.00	2.23
1,379.0	0.40	246.40	1,378.8	6.7	-16.5	16.5	0.61	-0.11	-83.66
1,472.0	0.30	219.30	1,471.8	6.3	-16.9	17.0	0.21	-0.11	-29.14
1,567.0	0.40	314.40	1,566.8	6.4	-17.3	17.4	0.55	0.11	100.11
1,659.0	1.00	320.20	1,658.8	7.2	-18.0	18.1	0.66	0.65	6.30
1,750.0	1.10	93.80	1,749.8	7.8	-17.7	17.8	2.12	0.11	146.81
1,843.0	1.00	92.00	1,842.8	7.7	-16.0	16.1	0.11	-0.11	-1.94
1,934.0	0.90	49.70	1,933.8	8.1	-14.6	14.8	0.76	-0.11	-46.48
2,026.0	0.80	2.60	2,025.8	9.2	-14.1	14.2	0.74	-0.11	-51.20
2,119.0	1.10	333.70	2,118.8	10.7	-14.4	14.6	0.60	0.32	-31.08
2,211.0	1.80	330.20	2,210.7	12.7	-15.5	15.7	0.77	0.76	-3.80
2,303.0	1.60	346.40	2,302.7	15.2	-16.6	16.8	0.56	-0.22	17.61
2,395.0	1.70	348.90	2,394.7	17.8	-17.1	17.4	0.13	0.11	2.72
2,488.0	1.40	51.40	2,487.6	19.9	-16.5	16.8	1.75	-0.32	67.20
2,581.0	2.60	69.70	2,580.6	21.3	-13.6	13.9	1.45	1.29	19.68
2,673.0	3.10	80.40	2,672.5	22.5	-9.2	9.5	0.79	0.54	11.63
2,765.0	6.00	91.70	2,764.2	22.7	-2.0	2.3	3.28	3.15	12.28
2,857.0	5.40	90.10	2,855.7	22.6	7.2	-6.9	0.67	-0.65	-1.74
2,949.0	6.90	89.40	2,947.2	22.6	17.0	-16.7	1.63	1.63	-0.76
3,041.0	8.20	87.30	3,038.4	23.0	29.1	-28.8	1.44	1.41	-2.28
3,134.0	6.70	82.70	3,130.6	24.0	41.1	-40.8	1.73	-1.61	-4.95
3,226.0	8.30	80.80	3,221.8	25.7	53.0	-52.6	1.76	1.74	-2.07
3,319.0	7.50	75.20	3,313.9	28.4	65.5	-65.1	1.19	-0.86	-6.02
3,411.0	7.20	85.50	3,405.2	30.4	77.0	-76.6	1.47	-0.33	11.20
3,503.0	5.90	76.00	3,496.6	32.0	87.4	-86.9	1.84	-1.41	-10.33
3,599.0	7.50	94.50	3,591.9	32.7	98.4	-98.0	2.78	1.67	19.27
3,694.0	8.10	92.60	3,686.0	31.9	111.3	-110.8	0.69	0.63	-2.00
3,790.0	8.40	90.10	3,781.0	31.5	125.0	-124.6	0.49	0.31	-2.60
3,885.0	8.50	87.10	3,875.0	31.9	139.0	-138.6	0.48	0.11	-3.16
3,980.0	6.90	83.40	3,969.2	32.9	151.7	-151.2	1.76	-1.68	-3.89
4,075.0	8.20	88.50	4,063.3	33.7	164.1	-163.7	1.54	1.37	5.37
4,171.0	6.90	88.00	4,158.5	34.1	176.7	-176.3	1.36	-1.35	-0.52
4,266.0	7.40	80.10	4,252.8	35.4	188.5	-188.0	1.16	0.53	-8.32
4,361.0	7.60	85.00	4,346.9	37.0	200.7	-200.2	0.71	0.21	5.16
4,457.0	7.70	85.00	4,442.1	38.1	213.5	-213.0	0.10	0.10	0.00
4,552.0	8.00	83.60	4,536.2	39.4	226.4	-225.8	0.37	0.32	-1.47
4,647.0	8.80	85.20	4,630.2	40.7	240.2	-239.6	0.88	0.84	1.68
4,743.0	7.50	84.80	4,725.2	41.9	253.8	-253.2	1.36	-1.35	-0.42
4,838.0	6.90	74.30	4,819.5	44.0	265.4	-264.8	1.52	-0.63	-11.05
4,934.0	8.80	79.70	4,914.6	46.9	278.2	-277.6	2.12	1.98	5.63
5,029.0	7.80	77.10	5,008.6	49.6	291.6	-291.0	1.12	-1.05	-2.74
5,124.0	7.50	84.10	5,102.7	51.7	304.1	-303.4	1.03	-0.32	7.37

Company:	PETROLEUM DEVELOPMENT CORP DJ Basin	Local Co-ordinate Reference:	Well LDS 1U-234
Project:	SEC.1-T5N-R65W	TVD Reference:	WELL @ 4652.0ft (RKB - 13')
Site:	LDS 5N65W1U Pad Sec.1-T5N-R65W	MD Reference:	WELL @ 4652.0ft (RKB - 13')
Well:	LDS 1U-234	North Reference:	True
Wellbore:	Wellbore #1	Survey Calculation Method:	Minimum Curvature
Design:	Wellbore #1	Database:	US_EDM

Survey									
Measured Depth (ft)	Inclination (°)	Azimuth (°)	Vertical Depth (ft)	+N/-S (ft)	+E/-W (ft)	Vertical Section (ft)	Dogleg Rate (°/100usft)	Build Rate (°/100usft)	Turn Rate (°/100usft)
5,220.0	7.50	81.00	5,197.9	53.3	316.5	-315.8	0.42	0.00	-3.23
5,315.0	5.30	75.00	5,292.3	55.4	326.9	-326.1	2.42	-2.32	-6.32
5,410.0	4.00	72.40	5,387.0	57.6	334.3	-333.5	1.39	-1.37	-2.74
5,506.0	1.90	63.20	5,482.9	59.3	338.9	-338.1	2.24	-2.19	-9.58
5,601.0	0.30	12.20	5,577.8	60.2	340.3	-339.5	1.82	-1.68	-53.68
5,697.0	0.40	203.50	5,673.8	60.2	340.3	-339.4	0.73	0.10	-175.73
5,792.0	1.10	211.00	5,768.8	59.1	339.7	-338.8	0.74	0.74	7.89
5,888.0	1.10	208.20	5,864.8	57.5	338.7	-338.0	0.06	0.00	-2.92
5,983.0	1.30	223.30	5,959.8	55.9	337.6	-336.8	0.39	0.21	15.89
6,079.0	1.70	222.60	6,055.8	54.1	335.9	-335.1	0.42	0.42	-0.73
6,174.0	7.90	264.50	6,150.4	52.4	328.4	-327.7	7.08	6.53	44.11
6,269.0	16.40	277.00	6,243.2	53.4	308.6	-307.8	9.32	8.95	13.16
6,365.0	21.20	273.40	6,334.0	56.1	277.8	-277.0	5.14	5.00	-3.75
6,460.0	25.40	273.30	6,421.3	58.3	240.2	-239.5	4.42	4.42	-0.11
6,555.0	39.20	269.00	6,501.4	58.9	189.6	-188.8	14.72	14.53	-4.53
6,651.0	42.20	269.80	6,574.2	58.3	127.1	-126.3	3.17	3.13	0.83
6,746.0	50.70	271.20	6,639.6	59.0	58.3	-57.5	9.01	8.95	1.47
6,841.0	57.70	268.30	6,695.1	58.5	-18.7	19.5	7.77	7.37	-3.05
6,937.0	63.70	268.30	6,742.1	56.1	-102.4	103.1	6.25	6.25	0.00
7,032.0	69.60	271.20	6,779.7	55.7	-189.5	190.3	6.81	6.21	3.05
7,128.0	77.60	270.50	6,806.8	57.1	-281.5	282.3	8.36	8.33	-0.73
7,223.0	83.00	270.10	6,822.8	57.6	-375.1	375.9	5.70	5.68	-0.42
7,253.0	85.58	269.96	6,825.8	57.6	-405.0	405.7	8.63	8.62	-0.46
7"									
7,288.0	88.60	269.80	6,827.6	57.5	-439.9	440.7	8.63	8.62	-0.46
7,383.0	88.40	268.90	6,830.0	56.4	-534.9	535.6	0.97	-0.21	-0.95
7,478.0	89.20	270.10	6,832.0	55.6	-629.9	630.6	1.52	0.84	1.26
7,574.0	90.30	267.50	6,832.4	53.6	-725.8	726.5	2.94	1.15	-2.71
7,585.0	90.42	267.43	6,832.4	53.1	-736.8	737.5	1.23	1.05	-0.63
Deepest TVD Drilled - 6832.4'									
7,669.0	91.30	266.90	6,831.1	48.9	-820.7	821.3	1.23	1.05	-0.63
7,765.0	90.90	269.60	6,829.3	46.0	-916.7	917.2	2.84	-0.42	2.81
7,860.0	91.50	271.70	6,827.3	47.1	-1,011.6	1,012.2	2.30	0.63	2.21
7,952.0	91.50	271.70	6,824.9	49.8	-1,103.5	1,104.1	0.00	0.00	0.00
8,044.0	91.10	271.30	6,822.8	52.2	-1,195.5	1,196.1	0.61	-0.43	-0.43
8,136.0	90.40	270.60	6,821.6	53.8	-1,287.5	1,288.1	1.08	-0.76	-0.76
8,228.0	91.50	271.00	6,820.1	55.0	-1,379.4	1,380.1	1.27	1.20	0.43
8,319.0	91.60	271.00	6,817.6	56.6	-1,470.4	1,471.0	0.11	0.11	0.00
8,411.0	91.30	270.80	6,815.3	58.1	-1,562.4	1,563.0	0.39	-0.33	-0.22
8,504.0	90.90	270.50	6,813.5	59.1	-1,655.3	1,656.0	0.54	-0.43	-0.32
8,596.0	90.70	270.50	6,812.2	59.9	-1,747.3	1,748.0	0.22	-0.22	0.00
8,688.0	90.60	270.30	6,811.2	60.6	-1,839.3	1,840.0	0.24	-0.11	-0.22
8,780.0	90.00	270.10	6,810.7	60.9	-1,931.3	1,931.9	0.69	-0.65	-0.22

Company:	PETROLEUM DEVELOPMENT CORP DJ Basin	Local Co-ordinate Reference:	Well LDS 1U-234
Project:	SEC.1-T5N-R65W	TVD Reference:	WELL @ 4652.0ft (RKB - 13')
Site:	LDS 5N65W1U Pad Sec.1-T5N-R65W	MD Reference:	WELL @ 4652.0ft (RKB - 13')
Well:	LDS 1U-234	North Reference:	True
Wellbore:	Wellbore #1	Survey Calculation Method:	Minimum Curvature
Design:	Wellbore #1	Database:	US_EDM

Survey									
Measured Depth (ft)	Inclination (°)	Azimuth (°)	Vertical Depth (ft)	+N/-S (ft)	+E/-W (ft)	Vertical Section (ft)	Dogleg Rate (°/100usft)	Build Rate (°/100usft)	Turn Rate (°/100usft)
8,873.0	92.00	270.60	6,809.1	61.5	-2,024.3	2,024.9	2.22	2.15	0.54
8,966.0	91.50	270.30	6,806.2	62.2	-2,117.2	2,117.9	0.63	-0.54	-0.32
9,058.0	91.40	269.80	6,803.9	62.3	-2,209.2	2,209.8	0.55	-0.11	-0.54
9,150.0	90.10	268.30	6,802.7	60.7	-2,301.2	2,301.8	2.16	-1.41	-1.63
9,242.0	91.10	268.90	6,801.7	58.5	-2,393.2	2,393.7	1.27	1.09	0.65
9,334.0	91.50	268.30	6,799.6	56.3	-2,485.1	2,485.6	0.78	0.43	-0.65
9,426.0	91.30	270.10	6,797.4	55.0	-2,577.1	2,577.6	1.97	-0.22	1.96
9,519.0	91.30	269.60	6,795.3	54.7	-2,670.0	2,670.5	0.54	0.00	-0.54
9,611.0	91.10	271.00	6,793.3	55.2	-2,762.0	2,762.5	1.54	-0.22	1.52
9,704.0	91.90	270.10	6,790.9	56.1	-2,855.0	2,855.5	1.29	0.86	-0.97
9,796.0	92.40	271.90	6,787.5	57.7	-2,946.9	2,947.4	2.03	0.54	1.96
9,888.0	91.70	272.40	6,784.2	61.2	-3,038.8	3,039.3	0.93	-0.76	0.54
9,984.0	90.30	271.90	6,782.5	64.8	-3,134.7	3,135.3	1.55	-1.46	-0.52
10,079.0	91.50	271.90	6,781.0	67.9	-3,229.6	3,230.2	1.26	1.26	0.00
10,175.0	90.50	270.60	6,779.3	70.0	-3,325.6	3,326.2	1.71	-1.04	-1.35
10,270.0	91.80	270.30	6,777.4	70.7	-3,420.6	3,421.2	1.40	1.37	-0.32
10,365.0	90.90	269.60	6,775.2	70.7	-3,515.5	3,516.2	1.20	-0.95	-0.74
10,460.0	88.50	270.50	6,775.7	70.7	-3,610.5	3,611.1	2.70	-2.53	0.95
10,556.0	88.50	270.60	6,778.2	71.7	-3,706.5	3,707.1	0.10	0.00	0.10
10,651.0	88.10	270.30	6,781.0	72.4	-3,801.4	3,802.1	0.53	-0.42	-0.32
10,746.0	89.90	269.60	6,782.7	72.3	-3,896.4	3,897.0	2.03	1.89	-0.74
10,842.0	90.90	270.50	6,782.0	72.4	-3,992.4	3,993.0	1.40	1.04	0.94
10,937.0	91.70	269.90	6,779.8	72.7	-4,087.4	4,088.0	1.05	0.84	-0.63
11,032.0	92.60	268.90	6,776.3	71.7	-4,182.3	4,182.9	1.42	0.95	-1.05
11,128.0	90.40	270.10	6,773.8	70.9	-4,278.3	4,278.8	2.61	-2.29	1.25
11,223.0	90.20	269.00	6,773.3	70.2	-4,373.3	4,373.8	1.18	-0.21	-1.16
11,319.0	90.50	269.20	6,772.7	68.7	-4,469.2	4,469.8	0.38	0.31	0.21
11,414.0	92.80	269.40	6,769.9	67.5	-4,564.2	4,564.7	2.43	2.42	0.21
11,509.0	90.80	270.80	6,767.0	67.7	-4,659.1	4,659.6	2.57	-2.11	1.47
11,605.0	90.20	269.60	6,766.1	68.0	-4,755.1	4,755.6	1.40	-0.63	-1.25
11,700.0	91.20	269.60	6,765.0	67.3	-4,850.1	4,850.6	1.05	1.05	0.00
11,795.0	90.40	269.20	6,763.6	66.3	-4,945.1	4,945.6	0.94	-0.84	-0.42
11,891.0	91.20	268.70	6,762.3	64.6	-5,041.1	5,041.5	0.98	0.83	-0.52
11,986.0	92.20	271.70	6,759.5	64.9	-5,136.0	5,136.4	3.33	1.05	3.16
12,082.0	91.10	271.20	6,756.7	67.3	-5,232.0	5,232.4	1.26	-1.15	-0.52
12,177.0	89.80	268.90	6,756.0	67.4	-5,326.9	5,327.4	2.78	-1.37	-2.42
12,273.0	90.60	268.20	6,755.6	65.0	-5,422.9	5,423.3	1.11	0.83	-0.73
12,368.0	91.60	267.60	6,753.8	61.5	-5,517.8	5,518.2	1.23	1.05	-0.63
12,464.0	92.80	269.20	6,750.1	58.8	-5,613.7	5,614.0	2.08	1.25	1.67
12,559.0	91.80	270.60	6,746.3	58.7	-5,708.6	5,708.9	1.81	-1.05	1.47
12,654.0	91.20	270.30	6,743.8	59.4	-5,803.6	5,803.9	0.71	-0.63	-0.32
12,750.0	91.20	269.90	6,741.8	59.6	-5,899.6	5,899.8	0.42	0.00	-0.42
12,845.0	91.60	272.00	6,739.5	61.2	-5,994.5	5,994.8	2.25	0.42	2.21
12,940.0	89.70	273.30	6,738.4	65.5	-6,089.4	6,089.8	2.42	-2.00	1.37

Company:	PETROLEUM DEVELOPMENT CORP DJ Basin	Local Co-ordinate Reference:	Well LDS 1U-234
Project:	SEC.1-T5N-R65W	TVD Reference:	WELL @ 4652.0ft (RKB - 13')
Site:	LDS 5N65W1U Pad Sec.1-T5N-R65W	MD Reference:	WELL @ 4652.0ft (RKB - 13')
Well:	LDS 1U-234	North Reference:	True
Wellbore:	Wellbore #1	Survey Calculation Method:	Minimum Curvature
Design:	Wellbore #1	Database:	US_EDM

Survey										
Measured Depth (ft)	Inclination (°)	Azimuth (°)	Vertical Depth (ft)	+N/-S (ft)	+E/-W (ft)	Vertical Section (ft)	Dogleg Rate (°/100usft)	Build Rate (°/100usft)	Turn Rate (°/100usft)	
13,036.0	90.00	272.60	6,738.7	70.5	-6,185.3	6,185.7	0.79	0.31	-0.73	
13,131.0	91.00	272.20	6,737.8	74.5	-6,280.2	6,280.6	1.13	1.05	-0.42	
13,227.0	89.10	272.00	6,737.8	78.0	-6,376.1	6,376.6	1.99	-1.98	-0.21	
13,322.0	88.80	269.60	6,739.5	79.3	-6,471.1	6,471.6	2.55	-0.32	-2.53	
13,417.0	89.30	272.00	6,741.1	80.6	-6,566.1	6,566.6	2.58	0.53	2.53	
13,513.0	92.20	272.60	6,739.8	84.5	-6,662.0	6,662.5	3.08	3.02	0.63	
13,608.0	93.70	272.00	6,734.9	88.3	-6,756.8	6,757.3	1.70	1.58	-0.63	
13,703.0	92.50	271.50	6,729.8	91.2	-6,851.6	6,852.2	1.37	-1.26	-0.53	
13,821.0	94.40	270.10	6,722.7	92.8	-6,969.3	6,970.0	2.00	1.61	-1.19	
13,880.0	94.40	270.10	6,718.2	92.9	-7,028.2	7,028.8	0.00	0.00	0.00	

Casing Points					
Measured Depth (ft)	Vertical Depth (ft)	Name	Casing Diameter (")	Hole Diameter (")	
7,253.0	6,825.8	7"	7	8-3/4	

Survey Annotations					
Measured Depth (ft)	Vertical Depth (ft)	Local Coordinates		Comment	
		+N/-S (ft)	+E/-W (ft)		
7,585.0	6,832.4	53.1	-736.8	Deepest TVD Drilled - 6832.4'	

Checked By: _____	Approved By: _____	Date: _____
-------------------	--------------------	-------------