

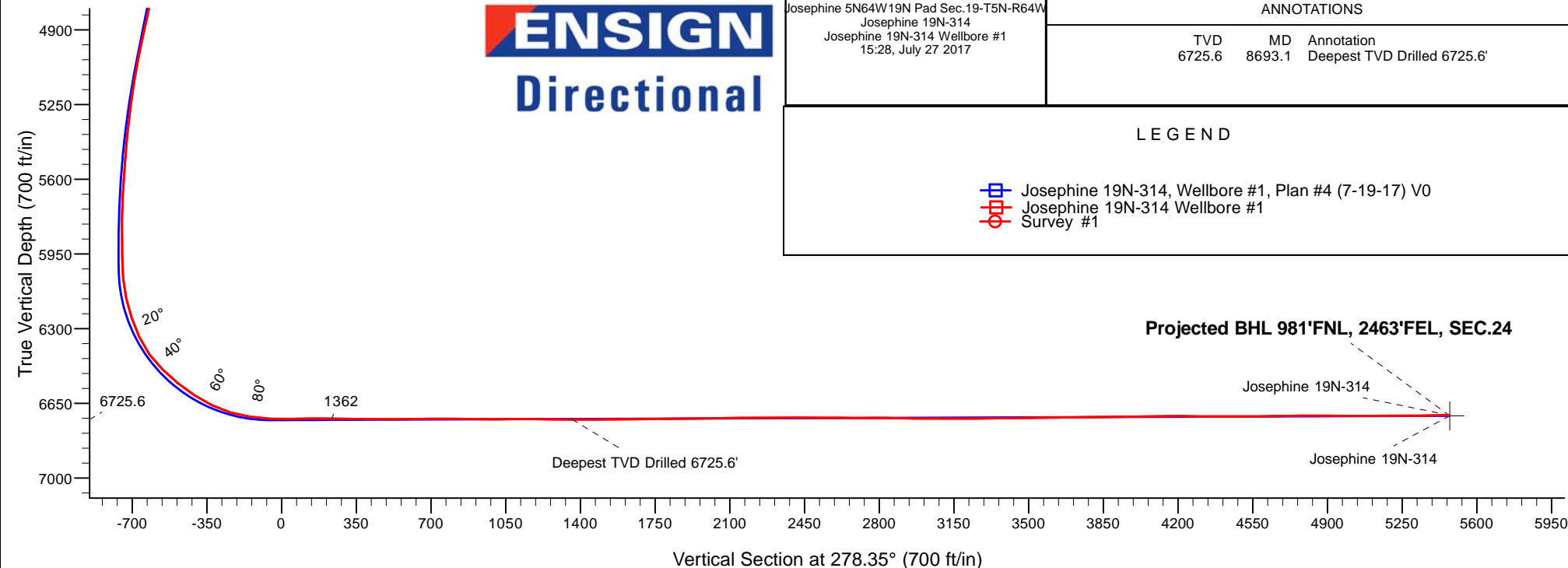
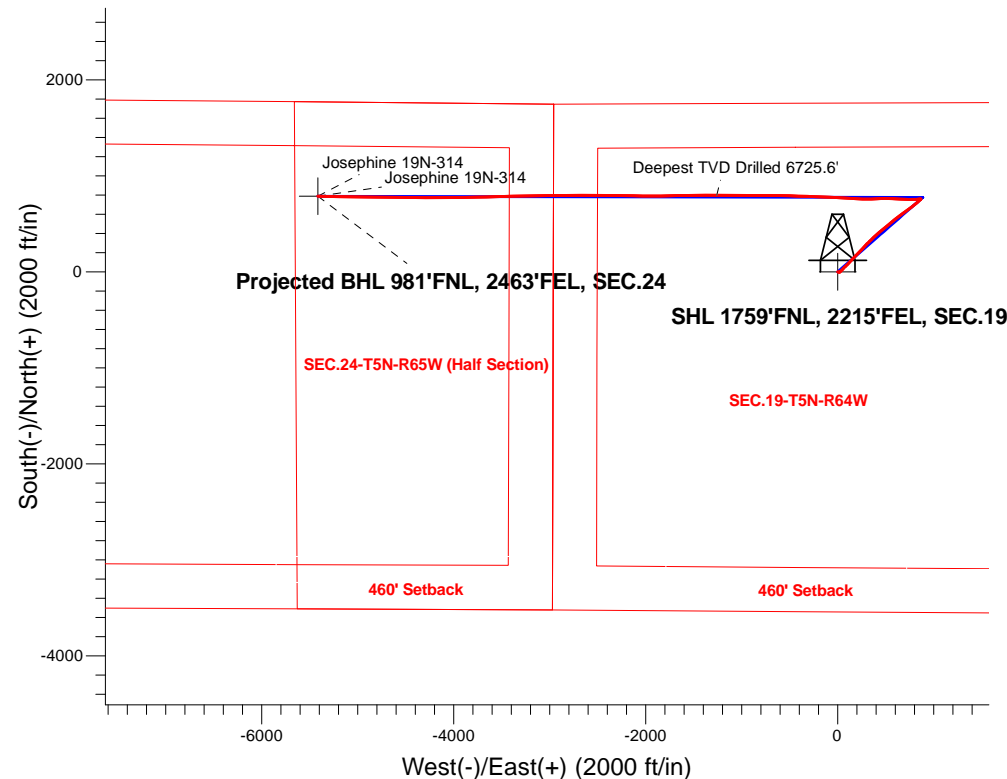
# PDC Energy Inc. DJ Basin

Well Name: **Josephine 19N-314**

Surface Location: Josephine 5N64W19N Pad Sec.19-T5N-R64W  
 North American Datum 1983 , US State Plane 1983, Colorado Northern Zone  
 Ground Elevation: 4626.0  
 +N/-S+E/-W Northing Easting Latitude Longitude Slot  
 0.0 0.0 1385139.743253129.06 40.387050 -104.591290  
 Original Well Elev WELL @ 4649.0ft (Original Well Elev)

## FINAL SURVEY

**Projected Bottom Hole Location**  
**12,849'MD 6705'TVD 788'N & 5414'W of SHL**  
**90.7 degree Incl @ 271.1 degree AZM**



**ENSIGN**  
 Directional

Josephine 5N64W19N Pad Sec.19-T5N-R64W  
 Josephine 19N-314  
 Josephine 19N-314 Wellbore #1  
 15:28, July 27 2017

### ANNOTATIONS

TVD	MD	Annotation
6725.6	8693.1	Deepest TVD Drilled 6725.6'

### LEGEND

- Josephine 19N-314, Wellbore #1, Plan #4 (7-19-17) V0
- Josephine 19N-314 Wellbore #1
- Survey #1



## **PDC Energy Inc. DJ Basin**

**SEC.19-T5N-R64W**

**Josephine 5N64W19N Pad Sec.19-T5N-R64W**

**Josephine 19N-314**

**Wellbore #1**

**Survey: Survey #1**

## **Standard Survey Report**

**27 July, 2017**

<b>Company:</b>	PDC Energy Inc. DJ Basin	<b>Local Co-ordinate Reference:</b>	Well Josephine 19N-314
<b>Project:</b>	SEC.19-T5N-R64W	<b>TVD Reference:</b>	WELL @ 4649.0ft (Original Well Elev)
<b>Site:</b>	Josephine 5N64W19N Pad Sec.19-T5N-R64W	<b>MD Reference:</b>	WELL @ 4649.0ft (Original Well Elev)
<b>Well:</b>	Josephine 19N-314	<b>North Reference:</b>	True
<b>Wellbore:</b>	Wellbore #1	<b>Survey Calculation Method:</b>	Minimum Curvature
<b>Design:</b>	Josephine 19N-314 Wellbore #1	<b>Database:</b>	US_EDM

<b>Project</b>	SEC.19-T5N-R64W		
<b>Map System:</b>	US State Plane 1983	<b>System Datum:</b>	Mean Sea Level
<b>Geo Datum:</b>	North American Datum 1983		Using Well Reference Point
<b>Map Zone:</b>	Colorado Northern Zone		Using geodetic scale factor

Site	Josephine 5N64W19N Pad Sec.19-T5N-R64W				
Site Position:		Northing:	1,385,202.34 usft	Latitude:	40.387220
From:	Lat/Long	Easting:	3,253,192.49 usft	Longitude:	-104.591060
Position Uncertainty:	0.0 ft	Slot Radius:	13-3/16 "	Grid Convergence:	0.59 °

Well	Josephine 19N-314					
Well Position	+N/-S	0.0 ft	Northing:	1,385,139.74 usft	Latitude:	40.387050
	+E/-W	0.0 ft	Easting:	3,253,129.06 usft	Longitude:	-104.591290
Position Uncertainty		0.0 ft	Wellhead Elevation:	0.0 ft	Ground Level:	4,626.0 ft

<b>Wellbore</b>	Wellbore #1				
<b>Magnetics</b>	<b>Model Name</b>	<b>Sample Date</b>	<b>Declination (°)</b>	<b>Dip Angle (°)</b>	<b>Field Strength (nT)</b>
	IGRF2010	7/19/2017	7.95	66.85	52,502

<b>Design</b>	Josephine 19N-314 Wellbore #1				
<b>Audit Notes:</b>					
<b>Version:</b>	1.0	<b>Phase:</b>	ACTUAL	<b>Tie On Depth:</b>	0.0
<b>Vertical Section:</b>	<b>Depth From (TVD) (ft)</b>	<b>+N/-S (ft)</b>	<b>+E/-W (ft)</b>	<b>Direction (°)</b>	
	0.0	0.0	0.0	278.35	

<b>Survey Program</b>	<b>Date</b>	7/27/2017			
<b>From (ft)</b>	<b>To (ft)</b>	<b>Survey (Wellbore)</b>	<b>Tool Name</b>	<b>Description</b>	
158.0	12,849.0	Survey #1 (Wellbore #1)	MWD	MWD - Standard	

<b>Survey</b>										
<b>Measured Depth (ft)</b>	<b>Inclination (°)</b>	<b>Azimuth (°)</b>	<b>Vertical Depth (ft)</b>	<b>+N/-S (ft)</b>	<b>+E/-W (ft)</b>	<b>Vertical Section (ft)</b>	<b>Dogleg Rate (°/100usft)</b>	<b>Build Rate (°/100usft)</b>	<b>Turn Rate (°/100usft)</b>	
0.0	0.00	0.00	0.0	0.0	0.0	0.0	0.00	0.00	0.00	
158.0	0.50	13.90	158.0	0.7	0.2	-0.1	0.32	0.32	0.00	
254.0	0.40	80.90	254.0	1.1	0.6	-0.4	0.52	-0.10	69.79	
349.0	1.60	110.40	349.0	0.7	2.2	-2.0	1.33	1.26	31.05	
445.0	1.60	112.50	444.9	-0.3	4.7	-4.7	0.06	0.00	2.19	
541.0	1.80	108.10	540.9	-1.2	7.3	-7.4	0.25	0.21	-4.58	
636.0	1.90	120.90	635.9	-2.5	10.1	-10.4	0.45	0.11	13.47	
732.0	1.00	123.30	731.8	-3.8	12.2	-12.6	0.94	-0.94	2.50	
828.0	0.90	108.50	827.8	-4.5	13.6	-14.1	0.28	-0.10	-15.42	
923.0	1.10	119.70	922.8	-5.2	15.1	-15.7	0.29	0.21	11.79	

<b>Company:</b>	PDC Energy Inc. DJ Basin	<b>Local Co-ordinate Reference:</b>	Well Josephine 19N-314
<b>Project:</b>	SEC.19-T5N-R64W	<b>TVD Reference:</b>	WELL @ 4649.0ft (Original Well Elev)
<b>Site:</b>	Josephine 5N64W19N Pad Sec.19-T5N-R64W	<b>MD Reference:</b>	WELL @ 4649.0ft (Original Well Elev)
<b>Well:</b>	Josephine 19N-314	<b>North Reference:</b>	True
<b>Wellbore:</b>	Wellbore #1	<b>Survey Calculation Method:</b>	Minimum Curvature
<b>Design:</b>	Josephine 19N-314 Wellbore #1	<b>Database:</b>	US_EDM

Survey									
Measured Depth (ft)	Inclination (°)	Azimuth (°)	Vertical Depth (ft)	+N-S (ft)	+E-W (ft)	Vertical Section (ft)	Dogleg Rate (°/100usft)	Build Rate (°/100usft)	Turn Rate (°/100usft)
1,019.0	1.50	77.20	1,018.8	-5.4	17.1	-17.7	1.06	0.42	-44.27
1,115.0	2.50	55.60	1,114.7	-3.9	20.1	-20.4	1.29	1.04	-22.50
1,210.0	3.30	44.70	1,209.6	-0.8	23.7	-23.6	1.02	0.84	-11.47
1,306.0	4.80	46.60	1,305.3	3.9	28.6	-27.7	1.57	1.56	1.98
1,402.0	6.00	49.60	1,400.9	10.0	35.3	-33.5	1.28	1.25	3.13
1,497.0	6.10	44.30	1,495.4	16.8	42.6	-39.7	0.60	0.11	-5.58
1,593.0	7.90	40.10	1,590.7	25.5	50.4	-46.2	1.95	1.88	-4.38
1,690.0	9.20	42.10	1,686.6	36.3	59.9	-54.0	1.37	1.34	2.06
1,786.0	11.00	47.30	1,781.1	48.2	71.8	-64.0	2.10	1.88	5.42
1,882.0	11.70	48.00	1,875.2	61.0	85.8	-76.0	0.74	0.73	0.73
1,977.0	13.00	43.10	1,968.0	75.2	100.2	-88.2	1.76	1.37	-5.16
2,073.0	14.20	44.30	2,061.3	91.5	115.8	-101.3	1.28	1.25	1.25
2,169.0	14.60	42.10	2,154.3	108.9	132.1	-114.9	0.71	0.42	-2.29
2,264.0	16.10	41.30	2,245.9	127.7	148.9	-128.7	1.59	1.58	-0.84
2,360.0	18.10	44.90	2,337.7	148.3	168.2	-144.9	2.36	2.08	3.75
2,456.0	17.40	44.70	2,429.1	169.0	188.8	-162.2	0.73	-0.73	-0.21
2,552.0	15.90	43.30	2,521.1	188.8	207.9	-178.3	1.62	-1.56	-1.46
2,647.0	18.30	45.00	2,611.9	208.8	227.4	-194.6	2.58	2.53	1.79
2,742.0	18.20	43.80	2,702.1	230.1	248.2	-212.2	0.41	-0.11	-1.26
2,838.0	18.00	42.10	2,793.3	251.9	268.5	-229.1	0.59	-0.21	-1.77
2,934.0	17.30	40.60	2,884.8	273.8	287.8	-244.9	0.87	-0.73	-1.56
3,029.0	17.30	48.70	2,975.5	293.8	307.6	-261.6	2.53	0.00	8.53
3,125.0	15.90	45.70	3,067.5	312.4	327.7	-278.9	1.71	-1.46	-3.13
3,221.0	15.00	42.80	3,160.1	330.7	345.6	-293.9	1.24	-0.94	-3.02
3,315.0	15.70	43.60	3,250.7	348.9	362.6	-308.1	0.78	0.74	0.85
3,413.0	14.50	50.30	3,345.3	366.3	381.2	-323.9	2.16	-1.22	6.84
3,508.0	14.80	50.80	3,437.3	381.6	399.7	-340.1	0.34	0.32	0.53
3,604.0	16.70	50.70	3,529.6	398.0	419.9	-357.6	1.98	1.98	-0.10
3,699.0	17.00	49.10	3,620.6	415.8	441.0	-375.9	0.58	0.32	-1.68
3,795.0	17.20	48.70	3,712.3	434.3	462.2	-394.2	0.24	0.21	-0.42
3,891.0	17.20	48.00	3,804.0	453.2	483.5	-412.5	0.22	0.00	-0.73
3,987.0	17.10	51.90	3,895.8	471.4	505.1	-431.3	1.20	-0.10	4.06
4,083.0	15.90	48.20	3,987.8	488.9	526.0	-449.4	1.66	-1.25	-3.85
4,179.0	18.60	51.90	4,079.5	507.1	547.9	-468.4	3.03	2.81	3.85
4,275.0	17.60	51.50	4,170.7	525.6	571.3	-488.9	1.05	-1.04	-0.42
4,371.0	15.70	49.80	4,262.7	543.0	592.6	-507.4	2.04	-1.98	-1.77
4,466.0	17.70	54.20	4,353.7	559.8	614.1	-526.3	2.49	2.11	4.63
4,561.0	16.40	53.80	4,444.5	576.1	636.6	-546.2	1.37	-1.37	-0.42
4,657.0	17.70	53.10	4,536.3	592.9	659.2	-566.1	1.37	1.35	-0.73
4,752.0	16.40	52.40	4,627.1	609.7	681.4	-585.6	1.39	-1.37	-0.74
4,847.0	17.00	54.50	4,718.1	626.0	703.4	-605.0	0.90	0.63	2.21
4,943.0	15.50	54.20	4,810.3	641.6	725.2	-624.3	1.56	-1.56	-0.31
5,039.0	17.20	54.20	4,902.4	657.5	747.1	-643.7	1.77	1.77	0.00
5,135.0	16.70	53.10	4,994.2	674.0	769.6	-663.6	0.62	-0.52	-1.15

<b>Company:</b>	PDC Energy Inc. DJ Basin	<b>Local Co-ordinate Reference:</b>	Well Josephine 19N-314
<b>Project:</b>	SEC.19-T5N-R64W	<b>TVD Reference:</b>	WELL @ 4649.0ft (Original Well Elev)
<b>Site:</b>	Josephine 5N64W19N Pad Sec.19-T5N-R64W	<b>MD Reference:</b>	WELL @ 4649.0ft (Original Well Elev)
<b>Well:</b>	Josephine 19N-314	<b>North Reference:</b>	True
<b>Wellbore:</b>	Wellbore #1	<b>Survey Calculation Method:</b>	Minimum Curvature
<b>Design:</b>	Josephine 19N-314 Wellbore #1	<b>Database:</b>	US_EDM

Survey									
Measured Depth (ft)	Inclination (°)	Azimuth (°)	Vertical Depth (ft)	+N/-S (ft)	+E/-W (ft)	Vertical Section (ft)	Dogleg Rate (°/100usft)	Build Rate (°/100usft)	Turn Rate (°/100usft)
5,231.0	14.90	50.80	5,086.6	690.1	790.2	-681.6	1.98	-1.88	-2.40
5,326.0	12.60	49.80	5,178.9	704.5	807.6	-696.7	2.43	-2.42	-1.05
5,422.0	10.90	48.60	5,272.9	717.3	822.4	-709.5	1.79	-1.77	-1.25
5,517.0	9.50	48.70	5,366.3	728.4	835.1	-720.4	1.47	-1.47	0.11
5,613.0	7.40	48.00	5,461.3	737.8	845.6	-729.5	2.19	-2.19	-0.73
5,708.0	6.70	44.30	5,555.6	745.8	854.0	-736.6	0.88	-0.74	-3.89
5,804.0	5.40	49.60	5,651.0	752.8	861.4	-742.9	1.47	-1.35	5.52
5,900.0	2.30	44.30	5,746.8	757.1	866.2	-747.0	3.25	-3.23	-5.52
5,995.0	0.70	335.30	5,841.8	759.0	867.3	-747.8	2.26	-1.68	-72.63
6,120.0	0.80	356.50	5,966.8	760.5	866.9	-747.2	0.23	0.08	16.96
6,216.0	5.30	256.90	6,062.6	760.2	862.5	-742.9	5.72	4.69	-103.75
6,312.0	13.30	262.00	6,157.3	757.7	847.2	-728.2	8.37	8.33	5.31
6,408.0	19.20	265.60	6,249.4	754.9	820.5	-702.2	6.23	6.15	3.75
6,503.0	24.30	269.70	6,337.6	753.6	785.4	-667.6	5.60	5.37	4.32
6,599.0	36.10	271.80	6,420.5	754.4	737.2	-619.8	12.34	12.29	2.19
6,695.0	46.40	272.90	6,492.5	757.0	674.0	-556.9	10.76	10.73	1.15
6,790.0	51.00	273.90	6,555.2	761.3	602.8	-485.8	4.91	4.84	1.05
6,885.0	56.70	270.70	6,611.3	764.3	526.2	-409.6	6.59	6.00	-3.37
6,981.0	64.50	267.20	6,658.4	762.7	442.7	-327.2	8.72	8.13	-3.65
7,077.0	73.80	267.90	6,692.5	758.9	353.2	-239.2	9.71	9.69	0.73
7,173.0	81.70	272.30	6,712.9	759.1	259.4	-146.4	9.37	8.23	4.58
7,269.0	87.80	273.00	6,721.6	763.5	164.0	-51.3	6.40	6.35	0.73
7,364.0	91.50	273.70	6,722.2	769.0	69.2	43.3	3.96	3.89	0.74
7,459.0	90.60	272.70	6,720.5	774.3	-25.7	137.9	1.42	-0.95	-1.05
7,556.0	88.90	272.30	6,720.9	778.6	-122.6	234.4	1.80	-1.75	-0.41
7,651.0	89.40	272.70	6,722.3	782.7	-217.5	328.9	0.67	0.53	0.42
7,747.0	89.40	271.80	6,723.3	786.5	-313.4	424.3	0.94	0.00	-0.94
7,842.0	90.00	271.60	6,723.8	789.3	-408.3	518.7	0.67	0.63	-0.21
7,938.0	90.60	271.30	6,723.3	791.7	-504.3	614.0	0.70	0.63	-0.31
8,033.0	90.90	270.90	6,722.1	793.6	-599.3	708.2	0.53	0.32	-0.42
8,128.0	89.30	270.40	6,721.9	794.6	-694.3	802.3	1.76	-1.68	-0.53
8,224.0	89.10	270.60	6,723.2	795.5	-790.3	897.4	0.29	-0.21	0.21
8,319.0	90.00	270.20	6,724.0	796.1	-885.3	991.5	1.04	0.95	-0.42
8,415.0	90.80	269.50	6,723.3	795.9	-981.3	1,086.5	1.11	0.83	-0.73
8,510.0	89.00	270.90	6,723.5	796.2	-1,076.2	1,180.5	2.40	-1.89	1.47
8,606.0	89.30	270.20	6,724.9	797.1	-1,172.2	1,275.6	0.79	0.31	-0.73
8,693.1	89.85	270.57	6,725.5	797.7	-1,259.3	1,361.8	0.76	0.63	0.42
<b>Deepest TVD Drilled 6725.6'</b>									
8,701.0	89.90	270.60	6,725.6	797.8	-1,267.2	1,369.7	0.76	0.63	0.42
8,797.0	90.10	269.90	6,725.6	798.2	-1,363.2	1,464.7	0.76	0.21	-0.73
8,892.0	90.50	269.30	6,725.1	797.6	-1,458.2	1,558.6	0.76	0.42	-0.63
8,988.0	90.60	268.80	6,724.1	796.0	-1,554.2	1,653.3	0.53	0.10	-0.52
9,084.0	90.70	269.00	6,723.1	794.1	-1,650.2	1,748.0	0.23	0.10	0.21

<b>Company:</b>	PDC Energy Inc. DJ Basin	<b>Local Co-ordinate Reference:</b>	Well Josephine 19N-314
<b>Project:</b>	SEC.19-T5N-R64W	<b>TVD Reference:</b>	WELL @ 4649.0ft (Original Well Elev)
<b>Site:</b>	Josephine 5N64W19N Pad Sec.19-T5N-R64W	<b>MD Reference:</b>	WELL @ 4649.0ft (Original Well Elev)
<b>Well:</b>	Josephine 19N-314	<b>North Reference:</b>	True
<b>Wellbore:</b>	Wellbore #1	<b>Survey Calculation Method:</b>	Minimum Curvature
<b>Design:</b>	Josephine 19N-314 Wellbore #1	<b>Database:</b>	US_EDM

Survey									
Measured Depth (ft)	Inclination (°)	Azimuth (°)	Vertical Depth (ft)	+N/-S (ft)	+E/-W (ft)	Vertical Section (ft)	Dogleg Rate (°/100usft)	Build Rate (°/100usft)	Turn Rate (°/100usft)
9,180.0	91.00	268.10	6,721.6	791.7	-1,746.1	1,842.6	0.99	0.31	-0.94
9,275.0	91.30	269.50	6,719.7	789.7	-1,841.1	1,936.3	1.51	0.32	1.47
9,370.0	90.70	270.20	6,718.1	789.5	-1,936.1	2,030.2	0.97	-0.63	0.74
9,466.0	90.00	271.30	6,717.5	790.7	-2,032.1	2,125.4	1.36	-0.73	1.15
9,562.0	90.50	270.70	6,717.1	792.4	-2,128.0	2,220.6	0.81	0.52	-0.63
9,658.0	89.70	270.40	6,716.9	793.3	-2,224.0	2,315.7	0.89	-0.83	-0.31
9,754.0	90.00	270.60	6,717.1	794.1	-2,320.0	2,410.8	0.38	0.31	0.21
9,850.0	90.50	270.60	6,716.7	795.2	-2,416.0	2,505.9	0.52	0.52	0.00
9,945.0	89.00	270.70	6,717.1	796.2	-2,511.0	2,600.1	1.58	-1.58	0.11
10,041.0	89.90	270.20	6,718.1	797.0	-2,607.0	2,695.1	1.07	0.94	-0.52
10,137.0	90.20	270.60	6,718.0	797.7	-2,703.0	2,790.2	0.52	0.31	0.42
10,232.0	88.90	269.30	6,718.7	797.6	-2,798.0	2,884.2	1.94	-1.37	-1.37
10,328.0	89.20	268.80	6,720.3	796.0	-2,894.0	2,978.9	0.61	0.31	-0.52
10,423.5	89.70	269.50	6,721.2	794.6	-2,989.5	3,073.2	0.90	0.52	0.73
10,519.0	90.30	269.20	6,721.2	793.5	-3,085.0	3,167.5	0.70	0.63	-0.31
10,614.0	90.50	268.80	6,720.6	791.8	-3,179.9	3,261.2	0.47	0.21	-0.42
10,709.0	90.60	267.90	6,719.7	789.1	-3,274.9	3,354.8	0.95	0.11	-0.95
10,805.0	90.70	268.10	6,718.6	785.7	-3,370.8	3,449.2	0.23	0.10	0.21
10,901.0	90.80	269.30	6,717.3	783.6	-3,466.8	3,543.8	1.25	0.10	1.25
10,997.0	90.80	269.00	6,716.0	782.1	-3,562.8	3,638.6	0.31	0.00	-0.31
11,092.0	90.30	269.30	6,715.1	780.7	-3,657.8	3,732.4	0.61	-0.53	0.32
11,187.0	90.70	268.60	6,714.2	779.0	-3,752.7	3,826.1	0.85	0.42	-0.74
11,282.0	91.00	268.50	6,712.8	776.6	-3,847.7	3,919.7	0.33	0.32	-0.11
11,378.0	90.60	269.20	6,711.5	774.7	-3,943.7	4,014.4	0.84	-0.42	0.73
11,474.0	91.40	269.00	6,709.8	773.1	-4,039.6	4,109.1	0.86	0.83	-0.21
11,569.0	89.30	270.70	6,709.2	772.9	-4,134.6	4,203.0	2.84	-2.21	1.79
11,664.0	89.40	270.20	6,710.3	773.6	-4,229.6	4,297.1	0.54	0.11	-0.53
11,759.0	89.80	269.50	6,711.0	773.4	-4,324.6	4,391.1	0.85	0.42	-0.74
11,855.0	90.20	268.60	6,711.0	771.8	-4,420.6	4,485.8	1.03	0.42	-0.94
11,950.0	90.40	271.40	6,710.5	771.8	-4,515.6	4,579.8	2.95	0.21	2.95
12,046.0	90.90	271.40	6,709.4	774.2	-4,611.6	4,675.1	0.52	0.52	0.00
12,142.0	91.40	271.40	6,707.5	776.5	-4,707.5	4,770.4	0.52	0.52	0.00
12,238.0	89.10	271.40	6,707.0	778.8	-4,803.5	4,865.7	2.40	-2.40	0.00
12,334.0	89.70	270.70	6,708.0	780.6	-4,899.4	4,960.9	0.96	0.63	-0.73
12,429.0	90.00	270.40	6,708.3	781.5	-4,994.4	5,055.0	0.45	0.32	-0.32
12,525.0	90.40	270.00	6,708.0	781.8	-5,090.4	5,150.0	0.59	0.42	-0.42
12,621.0	90.20	271.40	6,707.5	783.0	-5,186.4	5,245.2	1.47	-0.21	1.46
12,717.0	90.50	271.30	6,706.9	785.3	-5,282.4	5,340.4	0.33	0.31	-0.10
12,794.0	90.70	271.10	6,706.1	786.9	-5,359.4	5,416.8	0.37	0.26	-0.26
12,849.0	90.70	271.10	6,705.4	788.0	-5,414.4	5,471.4	0.00	0.00	0.00

<b>Company:</b>	PDC Energy Inc. DJ Basin	<b>Local Co-ordinate Reference:</b>	Well Josephine 19N-314
<b>Project:</b>	SEC.19-T5N-R64W	<b>TVD Reference:</b>	WELL @ 4649.0ft (Original Well Elev)
<b>Site:</b>	Josephine 5N64W19N Pad Sec.19-T5N-R64W	<b>MD Reference:</b>	WELL @ 4649.0ft (Original Well Elev)
<b>Well:</b>	Josephine 19N-314	<b>North Reference:</b>	True
<b>Wellbore:</b>	Wellbore #1	<b>Survey Calculation Method:</b>	Minimum Curvature
<b>Design:</b>	Josephine 19N-314 Wellbore #1	<b>Database:</b>	US_EDM

Design Targets									
Target Name - hit/miss target - Shape	Dip Angle (°)	Dip Dir. (°)	TVD (ft)	+N/-S (ft)	+E/-W (ft)	Northing (usft)	Easting (usft)	Latitude	Longitude
SHL 1759'FNL, 2215'FE - survey hits target center - Point	0.00	0.00	1.0	0.0	0.0	1,385,139.75	3,253,129.06	40.387050	-104.591290
BHL 982'FNL, 2464'FEL - survey misses target center by 2.8ft at 12849.0ft MD (6705.4 TVD, 788.0 N, -5414.4 E) - Point	0.00	0.00	6,708.0	787.5	-5,415.3	1,385,871.70	3,247,706.17	40.389210	-104.610730

Survey Annotations				
Measured Depth (ft)	Vertical Depth (ft)	Local Coordinates		Comment
+N/-S (ft)	+E/-W (ft)			
8,693.1	6,725.5	797.7	-1,259.3	Deepest TVD Drilled 6725.6'

Checked By: _____	Approved By: _____	Date: _____
-------------------	--------------------	-------------